

# Condenser Fan Motors – Single Phase – PSC

**5½** inch dia. MARS SERIES **118**



## Outdoor Condenser Fan Motors

### Ball Bearing - 70°C

MARS 70°C SunSlinger totally enclosed condenser fan motors are designed for either vertical shaft-up or shaft-down applications in a variety of ambient conditions. Shell and end shields are enclosed for weather protection. A weep hole is provided in each end shield to allow condensate to drain. All of these motors are suitable for air conditioning or heat pump applications.

#### Features:

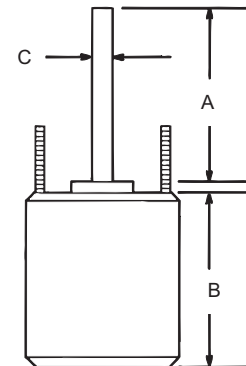
- All angle, ball bearing
- Rheem mounting holes w/screws installed
- Trane 4.33 bolt circle mounting holes with self tapping screws
- Reversible rotation
- Thru bolt or band mounting
- Water slinger on shaft
- Capacitor requirement noted on motor label
- Extra set of nuts on mounting studs

#### Specifications:

- Class "B" insulation
- Single phase, 60 Hertz
- 70°C/158°F
- Thermal overload protected
- Fan duty, continuous, air over
- Totally enclosed non-ventilated
- 36 inch leads

#### Cross Reference

MARS No.	US Motors/ Emerson	Century/ AO Smith	Wagner	GE/Genteq	York Source 1
20727	1859H	FE1016SF	WG840727HT	3726HS	
20728	1860H	FE1026SF	WG840728HT	3732HS	S1-FHM3728HT
20729	1861H	FE1036SF	WG840729HT	3733HS	S1-FHM3729HT
20730	1862H	FE1056SF	WG840730HT	3734HS	S1-FHM3730HT
20731	1868H	FE1076SF	WG840731HT	3735HS	
20402	1872H	FE1008SF		3202HS	
20403	1873H	FE1018SF		3203HS	
20404	1874H	FE1028SF	WG840404HT	3204HS	S1-FHM3204HT
20405	1875H	FE1038SF	WG840405HT	3205HS	S1-FHM3205HT
20746	1870H	FE1058SF		3747HS	



### Reversible Rotation – Ball Bearing – Single Speed

MARS NO.	HP	VOLTS	AMPS	CAP REQUIRED	ENCL.	DIMENSIONS		
						A	B	C

#### 1075 RPM

20727	1/6	208-230	0.90	5/370	TEAO	6.50	4.25	1/2
20728	1/4	208-230	1.8	5/370	TEAO	6.50	4.72	1/2
20729	1/3	208-230	2.4	7.5/370	TEAO	6.50	5.24	1/2
20730	1/2	208-230	3.5	10/370	TEAO	6.50	5.91	1/2
20731	3/4	208-230	5.2	10/370	TEAO	6.50	5.90	1/2

#### 825 RPM

<b>NEW</b> 20402	1/8	208-230	0.75	5/370	TEAO	6.50	4.30	1/2
20403	1/6	208-230	1.0	5/370	TEAO	6.50	4.52	1/2
20404	1/4	208-230	2.2	5/370	TEAO	6.50	4.92	1/2
20405	1/3	208-230	1.9	7.5/370	TEAO	6.50	5.31	1/2
20746	1/2	208-230	2.8	12.5/370	TEAO	7.00	5.90	1/2