

COMMITTED TO QUALITY

MATCO-NORCA continues our commitment in maintaining a high standard of quality for all the products we offer. Various products in this catalog are labeled with a designated approval or certification code. Below is a brief description of these approvals:



ISO International Standard Organization - A worldwide standards coordinating organization. An internationally recognized certification for manufacturers that comply with high standards of quality control. Developed standards ISO-9000 through ISO-9004.



IAPMO International Association of Plumbing & Mechanical Officials - Qualifies and lists products suitable for use in plumbing installations.

NSF National Sanitation Foundation - A non-profit organization best known for its role in developing standards for equipment, products and services. Many standards govern products for residential use.



ASSE American Society of Sanitary Engineering - Develops standards and qualifies products for plumbing and sanitary installations.



CSA Canadian Standards Association - Develops standards, tests and qualifies products used in gas lines and gas appliance installations.

UL Underwriter's Laboratory - Tests and qualifies valve and fitting products under UL standards for safety.



FM Factory Mutual - Develops standards and qualifies products for use by the general public.

AWWA American Water Works Association - Promotes public health through improvement of the quality of water. Develops standards for valves, fittings and other equipment.

ADA American Disability Act - Assures that products fully comply with the provisions of the act to ensure equal access for physically challenged users.



ASME American Society of Mechanical Engineers - Develops standards for materials and testing as well as finished products.

ASTM American Society for Testing of Materials - Develops standards for materials, products, systems and services.



ANSI American National Standards Institute - Organization that coordinates the work among U.S. Standards writing groups. Works in conjunction with other groups such as ISO, ASME, ASTM, etc.



MSS Mechanical Standardization Society of the Valve and Fittings Industry, Inc. - A committee of manufacturers that develops technical codes and standards for the Valve & Fitting industry.

MATCO-NORCA
MODEL #

SIZE

INNER
CARTON
QUANTITY

MASTER
CARTON
QUANTITY

LIST
PRICE

758

BALL VALVE - FULL PORT - FORGED BRASS

150SWP 600WOG



758T



758C

IPS	C x C				
758T01		1/4"	10	150	5.21
758T02		3/8"	10	120	5.21
758T03	758C03	1/2"	10	120	5.05
758T04	758C04	3/4"	5	60	7.10
758T05	758C05	1"	4	48	9.70
758T06	758C06	1-1/4"	4	40	15.64
758T07	758C07	1-1/2"	2	24	23.66
758T08	758C08	2"	2	16	36.31
Sizes Below Are Rated 150SWP 400WOG					
758T09		2-1/2"	1	8	81.02
758T10		3"	1	6	124.24
758T11		4"	1	5	249.48

754

BALL VALVE - FULL PORT - FORGED BRASS

150SWP 600WOG



754T



754C

IPS	C x C				
754T01		1/4"	20	120	7.01
754T02		3/8"	20	120	7.01
754T03	754C03	1/2"	20	120	6.32
754T04	754C04	3/4"	14	84	8.35
754T05	754C05	1"	8	48	12.13
754T06	754C06	1-1/4"	6	36	18.40
754T07	754C07	1-1/2"	4	24	29.62
754T08	754C08	2"	2	16	45.41



757

BALL VALVE - FULL PORT - FORGED BRASS

150SWP 600WOG UL/FM CSA



757

CSA Approval for 1/2" through 2"

IPS					
757T01		1/4"	10	120	5.21
757T02		3/8"	10	120	5.46
757T03		1/2"	20	120	5.34
757T04		3/4"	12	60	7.98
757T05		1"	10	30	11.43
757T06		1-1/4"	5	20	19.16
757T07		1-1/2"	4	16	28.09
757T08		2"	2	6	41.21



759T



759C

759 BALL VALVE - FULL PORT - FORGED BRASS 150SWP 600WOG CSA

CSA Approval 1/2" through 2"

MATCO-NORCA MODEL #	SIZE	INNER CARTON QUANTITY	MASTER CARTON QUANTITY	LIST PRICE
759T01	1/4"	15	120	5.66
759T02	3/8"	15	120	5.66
759T03	1/2"	15	120	5.27
759T04	3/4"	10	60	7.70
759T05	1"	8	48	11.01
759T06	1-1/4"	4	24	17.79
759T07	1-1/2"	2	24	25.56
759T08	2"	2	12	36.83
Sizes Below Are Rated 150SWP 400WOG				
759T09	2-1/2"	2	6	87.59
759T10	3"	1	4	129.98
759T11	4"	1	2	208.72
759C09	2-1/2"	2	6	94.07
759C10	3"	1	4	135.52
759C11	4"	1	2	213.11



755 BALL VALVE - FULL PORT - FORGED BRASS 150SWP 600WOG UL/FM CSA



755T

Nickel Plated Heavy Duty
CSA Approval 1/2" through 2"

MATCO-NORCA MODEL #	SIZE	INNER CARTON QUANTITY	MASTER CARTON QUANTITY	LIST PRICE
755T01	1/4"	10	120	8.43
755T02	3/8"	10	120	8.43
755T03	1/2"	20	120	8.43
755T04	3/4"	12	60	12.07
755T05	1"	10	30	18.26
755T06	1-1/4"	5	20	28.34
755T07	1-1/2"	4	16	41.31
755T08	2"	2	6	60.58
Sizes Below Are Not Currently UL, FM or CSA Approved				
755T09	2-1/2"	1	5	151.69
755T10	3"	1	5	211.81
755T11	4"	1	4	317.79



755Z

755Z BALL VALVE - FULL PORT - CAST BRONZE 150SWP 600WOG

MATCO-NORCA MODEL #	SIZE	INNER CARTON QUANTITY	MASTER CARTON QUANTITY	LIST PRICE
755Z01	1/4"	10	120	
755Z02	3/8"	10	120	
755Z03	1/2"	25	100	
755Z04	3/4"	15	60	
755Z05	1"	10	40	
755Z06	1-1/4"	5	20	
755Z07	1-1/2"	3	12	
755Z08	2"	2	8	



754TN



754CN

754N BALL VALVE - FULL PORT - FORGED BRASS - NICKEL PLATED 600WOG

MATCO-NORCA MODEL #

SIZE

INNER CARTON QUANTITY

MASTER CARTON QUANTITY

LIST PRICE

Nickel Plated

IPS	C x C				
754T01N		1/4"	30	120	5.14
754T02N		3/8"	30	120	5.14
754T03N	754C03N	1/2"	15	120	4.90
754T04N	754C04N	3/4"	10	90	6.89
754T05N	754C05N	1"	6	60	10.72
754T06N	754C06N	1-1/4"	6	36	14.97
754T07N	754C07N	1-1/2"	4	24	24.89
754T08N	754C08N	2"	2	15	36.40
754T09N		2-1/2"	1	8	86.18
754T10N		3"	1	6	126.94
754T11N		4"	1	4	201.21



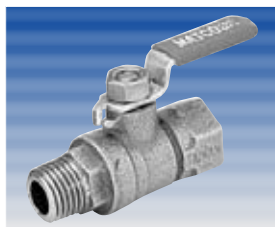
754DC



754DT

754D BALL VALVE - FULL PORT - CAST BRASS 400WOG w/DRAIN

IPS	C x C				
754DT3	754DC3	1/2"	20	80	8.28
754DT4	754DC4	3/4"	10	40	12.42
754DT5	754DC5	1"	6	24	16.57



755MF



755MFZ

755MF BALL VALVE - MALE X FEMALE - CAST BRONZE 150SWP 600WOG TEST COCK

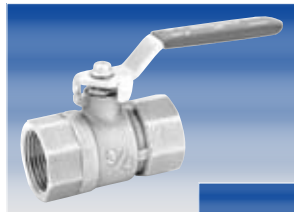
With Lever Handle

755MF0	1/8" X 1/4"	12	144	4.42
755MF1	1/4" X 1/4"	12	144	4.42

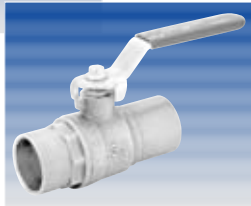
With Slotted Screw

755MFZ0	1/8" X 1/4"	20	200	3.80
755MFZ1	1/4" X 1/4"	20	200	3.80

MATCO-NORCA MODEL #	SIZE	INNER CARTON QUANTITY	MASTER CARTON QUANTITY	LIST PRICE
752 BALL VALVE - STANDARD PORT - FORGED BRASS 150SWP 400WOG				
IPS	C x C			
752T01	1/4"	15	180	6.87
752T02	3/8"	15	180	6.87
752T03	752C03 1/2"	10	120	6.34
752T04	752C04 3/4"	15	90	8.18
752T05	752C05 1"	10	60	12.29
752T06	752C06 1-1/4"	10	40	18.00
752T07	752C07 1-1/2"	6	24	26.85
752T08	752C08 2"	4	16	38.90
752T09	2-1/2"	1	12	79.91
752T10	3"	1	6	134.83
752T11	4"	1	6	202.22
	752C09 2-1/2"	1	12	125.41
	752C10 3"	1	6	174.42
	752C11 4"	1	6	244.56



752T



752C



752TN



752CN

MATCO-NORCA MODEL #	SIZE	INNER CARTON QUANTITY	MASTER CARTON QUANTITY	LIST PRICE
752N BALL VALVE - STANDARD PORT - FORGED BRASS 400WOG				
IPS	C x C			
752T01N	1/4"	6	240	4.21
752T02N	3/8"	6	240	4.21
752T03N	752C03N 1/2"	6	120	4.21
752T04N	752C04N 3/4"	6	120	5.39
752T05N	752C05N 1"	6	60	8.99
752T06N	752C06N 1-1/4"	2	30	12.47
752T07N	752C07N 1-1/2"	2	30	18.04
752T08N	752C08N 2"	2	24	25.82
752T09N	2-1/2"	1	12	69.30
752T10N	3"	1	8	96.90
752T11N	4"	1	6	145.90



752NX



754NX

MATCO-NORCA MODEL #	SIZE	INNER CARTON QUANTITY	MASTER CARTON QUANTITY	LIST PRICE
752NX 754NX BALL VALVE - WITH STAINLESS STEEL CROSS HANDLE 400WOG				
IPS - Standard Port				
752T03NX	1/2"	10	100	6.39
752T04NX	3/4"	10	100	8.70
IPS - Full Port				
754T05NX	1"	5	50	12.41



752CMP

MATCO-NORCA MODEL #	SIZE	INNER CARTON QUANTITY	MASTER CARTON QUANTITY	LIST PRICE
752CMP BALL VALVE - STANDARD PORT - FORGED BRASS W//COMPRESSION ENDS 400WOG				
752CMP3	1/2"	25	100	5.98
752CMP4	3/4"	15	60	8.81
752CMP5	1"	10	40	15.11

MATCO-NORCA MODEL #	SIZE	INNER CARTON QUANTITY	MASTER CARTON QUANTITY	LIST PRICE
760 BALL VALVE - ONE PIECE - 316 STAINLESS STEEL - STANDARD PORT 1000 WOG				



760

IPS	SIZE	INNER CARTON QUANTITY	MASTER CARTON QUANTITY	LIST PRICE
760T01	1/4"	60	250	17.78
760T02	3/8"	40	160	18.39
760T03	1/2"	20	80	20.98
760T04	3/4"	10	40	28.62
760T05	1"	10	40	36.40
760T06	1-1/4"	5	20	53.72
Sizes Below Are Rated 800 WOG				
760T07	1-1/2"	4	16	60.66
760T08	2"	2	8	81.26

IPS	C x C	INNER CARTON QUANTITY	MASTER CARTON QUANTITY	LIST PRICE
514 GATE VALVE - FULL PORT - CAST BRASS - SOLID WEDGE 125 SWP 200 WOG				



514T



514C

Valves Are Prop 65 Compliant

IPS	C x C	INNER CARTON QUANTITY	MASTER CARTON QUANTITY	LIST PRICE
514T01		10	120	4.95
514T02		10	120	4.95
514T03	514C03	10	120	4.62
514T04	514C04	10	80	6.04
514T05	514C05	5	60	8.19
514T06	514C06	5	40	11.93
514T07	514C07	5	30	15.25
514T08	514C08	2	24	23.23
	514C09	1	10	54.77
	514C10	1	6	82.29
	514C11	1	4	177.37
514T09	2-1/2"	1	10	46.32
514T10	3"	1	6	61.08
514T11	4"	1	4	100.50

IPS	CROSS HANDLE	CROWN HANDLE	INNER CARTON QUANTITY	MASTER CARTON QUANTITY	LIST PRICE
514TX 514TP BRASS CROSS HANDLE - GATE VALVE FULL PORT - CAST BRASS 125 SWP - 200WOG					



514TX



514TP

Valves Are Prop 65 Compliant

IPS	CROSS HANDLE	CROWN HANDLE	INNER CARTON QUANTITY	MASTER CARTON QUANTITY	LIST PRICE
514T03X		514T03P	10	120	4.82
514T04X		514T04P	10	80	6.50
514T05X		514T05P	5	60	8.80
514T06X		514T06P	5	40	12.83
514T07X		514T07P	5	30	16.39
514T08X		514T08P	2	24	24.99
514T09X		514T09P	1	10	46.36
514T10X		514T10P	1	6	61.87
514T11X			1	4	103.26

MATCO-NORCA
MODEL #

SIZE

INNER
CARTON
QUANTITY

MASTER
CARTON
QUANTITY

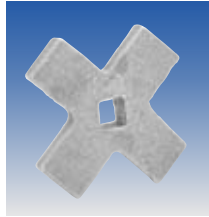
LIST
PRICE

514X 514P

BRASS CROSS HANDLE 5 POINT WHEEL HANDLE - HANDLE ONLY



514P



514X

**Cross
Handle
Model #**

**Crown
Handle
Model #**

**Fits
Valve
Sizes**

514X04	514P04	1/2", 3/4" 1"	1	100	.78
514X07	514P07	1-1/4", 1-1/2"	1	100	1.02
514X08	514P08	2"	1	100	1.35
514X09	514P09	2-1/2"	1	50	1.56
514X10	514P10	3"	1	25	1.97
514X11	514P11	4"	1	25	2.38

503

GATE VALVE - FULL PORT - BRONZE 85/5/5/5

125SWP 300WOG



503

IPS

503T03	1/2"	10	100	7.98
503T04	3/4"	10	60	10.57
503T05	1"	5	40	13.98
503T06	1-1/4"	5	30	19.71
503T07	1-1/2"	4	24	25.44
503T08	2"	4	16	36.32
503T09	2-1/2"	2	8	71.40
503T10	3"	1	6	100.74
503T11	4"	1	4	168.20

516

GATE VALVE - PRESSURE CAST BRASS

200WOG



516T



516C

IPS

C x C

516T01		1/4"	10	100
516T02		3/8"	10	100
516T03	516C03	1/2"	10	100
516T04	516C04	3/4"	10	100
516T05	516C05	1"	5	50
516T06	516C06	1-1/4"	5	50
516T07	516C07	1-1/2"	2	30
516T08	516C08	2"	2	20
516T09		2-1/2"	1	10
516T10		3"	1	10
516T11		4"	1	4

518

GATE VALVE - FULL PORT - CAST BRASS

200WOG



518T



518C

IPS

C x C

518T03	518C03	1/2"	10	100	3.96
518T04	518C04	3/4"	5	60	4.54
518T05	518C05	1"	5	40	6.08
518T06	518C06	1-1/4"	5	30	9.24
518T07	518C07	1-1/2"	4	24	11.31
518T08	518C08	2"	2	16	19.08



511T



511C

511 GATE VALVE - FEDERAL SPEC. - BRONZE - NRS - MSS-SP-80 150SWP 300WOG

MATCO-NORCA MODEL #	SIZE	INNER CARTON QUANTITY	MASTER CARTON QUANTITY	LIST PRICE	
IPS	C x C				
511T03	511C03	1/2"	10	80	12.15
511T04	511C04	3/4"	10	60	16.65
511T05	511C05	1"	5	40	26.97
511T06	511C06	1-1/4"	5	30	39.34
511T07	511C07	1-1/2"	4	24	54.75
511T08	511C08	2"	2	12	90.09
511T09	511C09	2-1/2"	2	8	132.46
511T10	511C10	3"	1	4	188.61



512T



512C

512 GATE VALVE - FEDERAL SPEC. - BRONZE - RISING STEM - MSS-SP-80 150SWP 300WOG

IPS	C x C				
512T03	512C03	1/2"	10	80	16.68
512T04	512C04	3/4"	10	60	21.65
512T05	512C05	1"	5	40	30.32
512T06	512C06	1-1/4"	5	30	45.98
512T07	512C07	1-1/2"	4	24	62.76
512T08	512C08	2"	2	12	79.70
512T09	512C09	2-1/2"	2	8	174.43



517T



517C

517 GATE VALVE - CAST BRASS W/DRAIN 200WOG

IPS	C x C				
517T03	517C03	1/2"	10	120	5.31
517T04	517C04	3/4"	10	90	6.90
517T05	517C05	1"	5	60	9.15



519

MATCO-NORCA MODEL #	SIZE	INNER CARTON QUANTITY	MASTER CARTON QUANTITY	LIST PRICE
519 GATE VALVE - CAST BRASS W/COMPRESSION ENDS 200WOG				
519T03	1/2"	10	120	6.59
519T04	3/4"	10	90	9.15
519T05	1"	5	60	12.59



730

MATCO-NORCA MODEL #	SIZE	INNER CARTON QUANTITY	MASTER CARTON QUANTITY	LIST PRICE
730 QUICK OPENING GATE VALVE - CAST BRONZE - LEVER HANDLE 200WOG				
IPS				
730T03	1/2"	10	100	25.20
730T04	3/4"	10	100	32.10
730T05	1"	5	50	36.33
730T06	1-1/4"	5	50	45.06
730T07	1-1/2"	5	30	58.23
730T08	2"	2	20	87.06
730T09	2-1/2"	1	12	150.07
730T10	3"	1	10	184.93
730T11	4"	1	5	304.67



521T



521C

MATCO-NORCA MODEL #	IPS	C x C	SIZE	INNER CARTON QUANTITY	MASTER CARTON QUANTITY	LIST PRICE
521 SWING CHECK VALVE - BRASS 200WOG						
IPS						
521T02			3/8"	10	120	5.90
521T03		521C03	1/2"	10	120	5.45
521T04		521C04	3/4"	10	80	7.13
521T05		521C05	1"	5	60	9.73
521T06		521C06	1-1/4"	5	40	14.50
521T07		521C07	1-1/2"	5	30	19.48
521T08		521C08	2"	2	24	28.72
521T09			2-1/2"	1	15	63.76
521T10			3"	1	6	84.87
521T11			4"	1	6	137.79
		521C10	3"	1	8	127.45
		521C11	4"	1	4	200.07



521N

MATCO-NORCA MODEL #	IPS	SIZE	INNER CARTON QUANTITY	MASTER CARTON QUANTITY	LIST PRICE
521N SWING CHECK VALVE - BRASS W/NEOPRENE SEAT 200WOG					
IPS					
521N03		1/2"	10	120	5.98
521N04		3/4"	10	80	8.13
521N05		1"	5	60	11.12
521N06		1-1/4"	5	40	16.17
521N07		1-1/2"	5	30	21.86
521N08		2"	2	24	32.28
521N09		2-1/2"	1	15	75.02
521N10		3"	1	10	100.97
521N11		4"	1	6	162.30

MATCO-NORCA
MODEL #

SIZE

INNER
CARTON
QUANTITY

MASTER
CARTON
QUANTITY

LIST
PRICE

530

SWING CHECK VALVE - CAST BRONZE 85/5/5/5

300WOG



530

IPS

530T02	3/8"	10	120	9.07
530T03	1/2"	10	120	7.84
530T04	3/4"	10	80	10.29
530T05	1"	5	60	14.01
530T06	1-1/4"	5	40	20.39
530T07	1-1/2"	5	30	28.07
530T08	2"	2	24	41.19
530T09	2-1/2"	1	15	96.53
530T10	3"	1	10	128.54
530T11	4"	1	6	208.85

532

SWING CHECK VALVE - BRONZE 85/5/5/5 Y PATTERN

300WOG



532T

IPS

532T03	1/2"	10	90	12.56
532T04	3/4"	10	80	15.71
532T05	1"	10	60	20.95
532T06	1-1/4"	5	30	29.83
532T07	1-1/2"	4	24	38.22
532T08	2"	2	16	59.18

525

INLINE CHECK VALVE - SPRING LOADED BRONZE 85/5/5/5

.5 PSI CRACK PRESSURE
200WOG



525T

IPS

525T03	1/2"	10	100	7.77
525T04	3/4"	10	80	10.07
525T05	1"	10	60	13.33
525T06	1-1/4"	5	40	19.82
525T07	1-1/2"	5	30	27.08
525T08	2"	5	20	42.25

525T2

INLINE CHECK VALVE - SPRING LOADED BRONZE 85/5/5/5

.5 PSI CRACK PRESSURE
200WOG



525T2

1/8" FIP Tap on Inlet Side - 1/4" FIP Tap on Outlet Side

IPS

525T05T2	1"	1	36	14.35
525T06T2	1-1/4"	1	24	20.84

527

FOOT VALVE - STAINLESS STEEL SCREEN BRONZE 85/5/5/5

.5 PSI CRACK PRESSURE
200WOG



527

IPS

527T03	1/2"	10	100	8.23
527T04	3/4"	10	80	10.65
527T05	1"	10	60	13.33
527T06	1-1/4"	5	40	19.95
527T07	1-1/2"	5	30	28.74
527T08	2"	5	20	42.57



58LGA

MATCO-NORCA MODEL #	SIZE	INNER CARTON QUANTITY	MASTER CARTON QUANTITY	LIST PRICE
58LGA GAS BALL VALVE - CSA APPROVED - 1/2 PSIG AND 5G FIP X FIP				
	LEVER	TEE HEAD	FLAT	
58LGA2	3/8"	12	144	4.90
58LGA3	58TGA3 58FGA3	12	144	4.49
58LGA4	58TGA4 58FGA4	12	144	5.93
58LGA5	1"	6	96	9.41



59LGA

MATCO-NORCA MODEL #	SIZE	INNER CARTON QUANTITY	MASTER CARTON QUANTITY	LIST PRICE
59LGA ONE PIECE GAS BALL VALVE - CSA APPROVED - 1/2 PSIG AND 5G FIP X FIP				
59LGA2	3/8"	12	96	7.13
59LGA3	1/2"	12	96	6.89
59LGA4	3/4"	6	48	9.27



759T

MATCO-NORCA MODEL #	SIZE	INNER CARTON QUANTITY	MASTER CARTON QUANTITY	LIST PRICE
759T BALL VALVE - FULL PORT CSA APPROVED 1-1/4"-2" RATED 600WOG				
759T06	1-1/4"	4	24	17.79
759T07	1-1/2"	2	24	25.56
759T08	2"	2	12	36.83
Sizes Below Are Rated 150SWP 400WOG				
759T09	2-1/2"	2	6	87.59
759T10	3"	1	4	129.98
759T11	4"	1	2	208.72

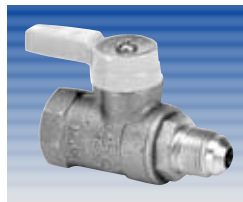
For A Complete Listing Of 759 Ball Valves See Page 5



757

MATCO-NORCA MODEL #	SIZE	INNER CARTON QUANTITY	MASTER CARTON QUANTITY	LIST PRICE
757T BALL VALVE - FULL PORT CSA APPROVED 1-1/4"-2" RATED 600WOG				
757T06	1-1/4"	5	20	19.16
757T07	1-1/2"	4	16	28.09
757T08	2"	2	6	41.21

For A Complete Listing Of 759 Ball Valves See Page 4



58LGAF

MATCO-NORCA MODEL #	SIZE	INNER CARTON QUANTITY	MASTER CARTON QUANTITY	LIST PRICE
58LGAF GAS BALL VALVE - CSA APPROVED - 1/2 PSIG AND 5G FIP X FLR				
58LGAF32	1/2" FIP x 3/8" Flare	12	144	5.62
58LGAF33	1/2" FIP x 1/2" Flare	12	144	5.62
58LGAF39	1/2" FIP x 9/16" - 24 Flare	12	144	5.62
58LGAF4	3/4" FIP x 15/16" - 24 Flare	12	144	6.94



59LGAF

MATCO-NORCA MODEL #	SIZE	INNER CARTON QUANTITY	MASTER CARTON QUANTITY	LIST PRICE
59LGAF ONE PIECE GAS BALL VALVE - CSA APPROVED - 1/2 PSIG AND 5G FIP X FLR				
59LGAF32	1/2" FIP x 3/8" Flare	12	144	7.51
59LGAF33	1/2" FIP x 1/2" Flare	12	144	7.51
59LGAF39	1/2" FIP x 9/16" - 24 Flare	12	144	7.51
59LGAF43	3/4" FIP x 1/2" Flare	12	144	7.51



58LGFF

58LGFF GAS BALL VALVE - CSA APPROVED - 1/2 PSIG AND 5G FLR X FLR



MATCO-NORCA MODEL #	SIZE	INNER CARTON QUANTITY	MASTER CARTON QUANTITY	LIST PRICE
58LGFF2	3/8" O.D. x 3/8" O.D.	12	144	6.04
58LGFF3	1/2" O.D. x 1/2" O.D.	12	144	6.04



59LGFF

59LGFF ONE PIECE GAS BALL VALVE - CSA APPROVED - 1/2 PSIG AND 5G FLR X FLR



59LGFF2	3/8" O.D. x 3/8" O.D.	12	144	7.02
59LGFF3	1/2" O.D. x 1/2" O.D.	12	144	7.56
59LGFF4	5/8" O.D. x 5/8" O.D.	12	144	7.56



58STR



58ANG

**58STR
58ANG**

LOG LIGHTER VALVE

COMPLETE KIT: VALVE, ESCUTCHEON, 3" KEY



Straight Valve

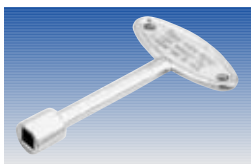
58-STR03	1/2" Chrome Plated	1	25	12.57
58-STR03P	1/2" Polished Brass	1	25	13.73

Angle Valve

58-ANG03	1/2" Chrome Plated	1	25	12.57
58-ANG03P	1/2" Polished Brass	1	25	13.73



58-300CP



58-200PB

58

PARTS FOR LOG LIGHTER VALVES



58-S03	1/2" Straight Valve	15	120	8.26
58-A03	1/2" Angle Valve	15	120	8.26
58-300CP	Escutcheon - Chrome Plated	20	120	3.19
58-300PB	Escutcheon - Polished Brass	20	120	3.94
58-200CP	Key 3" Chrome Plated	50	400	1.24
58-200PB	Key 3" Polished Brass	50	400	1.57
58-210CP	Key 10" Chrome Plated	50	200	2.81
58-210PB	Key 10" Polished Brass	50	200	3.12
58-212PB	Key 12" Polished Brass	20	100	3.16



58S

58S

GASCOCKS - SQUARE HEAD - PLUG TYPE - DOUBLE NUT WITH GREASE

IPS

58S002	3/8"	18	144	5.39
58S003	1/2"	18	144	5.39
58S004	3/4"	12	144	6.79
58S005	1"	10	120	10.71
58S006	1-1/4"	5	60	14.88



58F

MATCO-NORCA MODEL #	SIZE	INNER CARTON QUANTITY	MASTER CARTON QUANTITY	LIST PRICE
58F GASCOCKS - FLAT HEAD - PLUG TYPE - DOUBLE NUT WITH GREASE				
FIP x FIP				
58F002	3/8"	18	144	5.39
58F003	1/2"	18	144	5.39
58F004	3/4"	12	144	6.79
58F005	1"	10	120	10.71
58F006	1-1/4"	5	60	14.88



58L

58L GASCOCKS - LEVER HANDLE - PLUG TYPE - DOUBLE NUT WITH GREASE				
FIP x FIP				
58L002	3/8"	18	144	5.39
58L003	1/2"	18	144	5.39
58L004	3/4"	12	144	6.79
58L005	1"	10	120	10.71
58L006	1-1/4"	5	60	14.88



58T

58T GASCOCKS - TEE HANDLE - PLUG TYPE - DOUBLE NUT WITH GREASE				
FIP x FIP				
58T002	3/8"	18	144	5.39
58T003	1/2"	18	144	5.39
58T004	3/4"	12	144	6.79
58T005	1"	10	120	10.71
58T006	1-1/4"	5	60	14.88



58TX

58TX GASCOCK-TEXAS PATTERN - PLUG TYPE - DOUBLE NUT WITH GREASE					FIP X BARB
58TX02	3/8"	12	144	5.54	
58TX03	1/2"	18	144	5.54	
58TX04	3/4"	12	144	6.81	



580203



580903

580 GAS HEATER VALVE - PLUG TYPE - DOUBLE NUT WITH GREASE					FIP X FLARE
580203	1/2" X 3/8"	18	144	5.49	
580303	1/2" X 1/2"	18	144	5.49	
580903	1/2" X 9/16"	18	144	5.49	



58F

58F GAS VALVE- PLUG TYPE - DOUBLE NUT WITH GREASE					FLARE
Flare x Flare					
58F202	3/8" OD X 3/8"OD	6	24	5.49	
58F303	1/2" OD X 1/2"OD	6	24	5.49	

MATCO-NORCA
MODEL #

SIZE

INNER
CARTON
QUANTITY

MASTER
CARTON
QUANTITY

LIST
PRICE



PC-05



PC-05N



PC-05B

PC PVC PIPE CUTTERS & REPLACEMENT BLADES

PC-05	1/2" - 1" Cutter	1	1	32.77
PC-05B	1/2 - 1" Blade Only	1	1	15.55
PC-08	1-1/4" - 2" Cutter	1	1	109.60
PC-08B	1-1/4" - 2" Blade Only	1	1	36.62
PC-05N	1/2" - 1" Economy Cutter	1	1	18.45
PC-05NB	1/2" - 1" Econ Blade Only	1	1	7.65

770 PVC BALL VALVE - NSF SOLVENT & THREADED - WHITE SCH 40 & 80 150PSI



770S



770T

T Handle thru 4"

SOLVENT THREADED

770S03	770T03	1/2"	1	100	3.60
770S04	770T04	3/4"	1	100	4.44
770S05	770T05	1"	1	50	6.29
770S06	770T06	1-1/4"	1	50	8.74
770S07	770T07	1-1/2"	1	50	13.62
770S08	770T08	2"	1	20	17.37
770S09	770T09	2-1/2"	1	12	37.17
770S10	770T10	3"	1	12	63.07
770S11	770T11	4"	1	6	121.14

770G PVC BALL VALVE - NSF SOLVENT & THREADED - GRAY SCH 40 & 80-150PSI



770SG



770TG

"T" Handle thru 4"

SOLVENT THREADED

770S03G	770T03G	1/2"	1	100	3.76
770S04G	770T04G	3/4"	1	100	4.65
770S05G	770T05G	1"	1	50	6.59
770S06G	770T06G	1-1/4"	1	50	9.15
770S07G	770T07G	1-1/2"	1	50	14.27
770S08G	770T08G	2"	1	20	18.19
770S09G	770T09G	2-1/2"	1	12	38.94
770S10G	770T10G	3"	1	12	66.07
770S11G	770T11G	4"	1	6	126.92

770N PVC BALL VALVE - SOLVENT & THREADED- WHITE SCH 40 - ECONOMY PATTERN 150PSI



770SN



770TN

Lever Handle 2 1/2" and Above

SOLVENT THREADED

770S03N	770T03N	1/2"	1	100	2.15
770S04N	770T04N	3/4"	1	100	2.91
770S05N	770T05N	1"	1	50	4.47
770S06N	770T06N	1-1/4"	1	50	6.29
770S07N	770T07N	1-1/2"	1	24	7.80
770S08N	770T08N	2"	1	24	11.67
770S09N	770T09N	2-1/2"	1	12	38.15
770S10N	770T10N	3"	1	12	61.02
770S11N	770T11N	4"	1	6	110.60
770S13N		6"	1	1	321.84

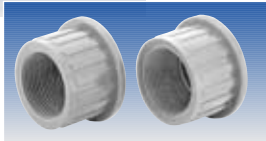


773

MATCO-NORCA MODEL #	SIZE	INNER CARTON QUANTITY	MASTER CARTON QUANTITY	LIST PRICE
773 PVC BALL VALVE - SOLVENT & THREADED- WHITE SINGLE UNION 150 PSI				
SOLVENT	THREADED			
773S07	773T07	1	48	15.27
773S08	773T08	1	24	17.88



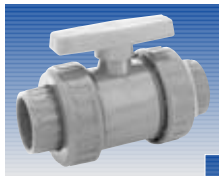
772ST



IPS & SLIP ENDS

MATCO-NORCA MODEL #	SIZE	INNER CARTON QUANTITY	MASTER CARTON QUANTITY	LIST PRICE
772ST PVC BALL VALVE - SOLVENT & THREADED ENDS - GRAY TRUE UNION 150 PSI				
BOTH ENDS IN BOX				
772ST03	1/2"	1	72	14.79
772ST04	3/4"	1	60	18.49
772ST05	1"	1	45	24.63
772ST06	1-1/4"	1	24	40.41
772ST07	1-1/2"	1	16	51.22
772ST08	2"	1	12	72.98

*See below for 2-1/2"- 4" True Union Ball Valves



772S



772T

MATCO-NORCA MODEL #	SIZE	INNER CARTON QUANTITY	MASTER CARTON QUANTITY	LIST PRICE
772 PVC BALL VALVE - SOLVENT & THREADED ENDS - GRAY TRUE UNION 150 PSI				
SOLVENT OR THREADED ENDS ONLY IN BOX				
Solvent	Threaded			
772S09	772T09	1	12	95.61
772S10	772T10	1	6	162.72
772S11	772T11	1	1	279.42



771S

MATCO-NORCA MODEL #	SIZE	INNER CARTON QUANTITY	MASTER CARTON QUANTITY	LIST PRICE
771 CPVC BALL VALVE - COPPER TUBE SIZE 100PSI @ 180F				
Solvent				
771S03	1/2"	1	100	6.38
771S04	3/4"	1	100	8.01
771S05	1"	1	100	12.69

MATCO-NORCA MODEL #	SIZE	INNER CARTON QUANTITY	MASTER CARTON QUANTITY	LIST PRICE	
523 PVC INLINE CHECK VALVE .5 PSI CRACK PRESSURE - SPRING LOADED - ONE PIECE					
Threaded					
Solvent					
523T03	523S03	1/2"	1	120	5.18
523T04	523S04	3/4"	1	120	5.64
523T05	523S05	1"	1	80	7.55
523T06	523S06	1-1/4"	1	60	10.90
523T07	523S07	1-1/2"	1	60	11.85
523T08	523S08	2"	1	40	14.33



523T



523S

MATCO-NORCA MODEL #	SIZE	INNER CARTON QUANTITY	MASTER CARTON QUANTITY	LIST PRICE	
524 PVC INLINE CHECK VALVE .5 PSI CRACK PRESSURE - SPRING LOADED - SINGLE UNION					
Threaded					
Solvent					
524T03	524S03	1/2"	12	144	2.91
524T04	524S04	3/4"	6	72	3.51
524T05	524S05	1"	6	60	5.26
524T06	524S06	1-1/4"	4	48	6.59
524T07	524S07	1-1/2"	4	40	10.22
524T08	524S08	2"	4	24	12.94

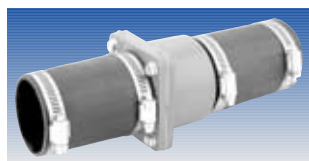


524T



524S

MATCO-NORCA MODEL #	SIZE	INNER CARTON QUANTITY	MASTER CARTON QUANTITY	LIST PRICE
529 PLASTIC CHECK VALVE RUBBER CONNECTIONS - STAINLESS STEEL CLAMPS				
529-0808	2" X 2"	1	50	14.22
529-0706	1-1/2" X 1-1/4"	10	50	11.59

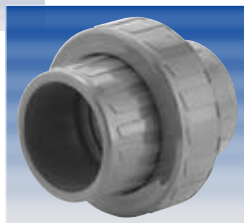


529

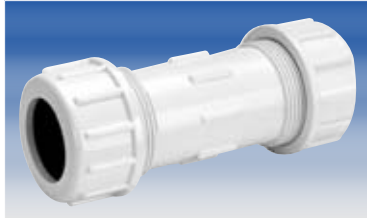
MATCO-NORCA MODEL #	SIZE	INNER CARTON QUANTITY	MASTER CARTON QUANTITY	LIST PRICE	
470 UNION - PVC - GRAY FITS SCH 40 & 80 PIPE					
Threaded					
Solvent					
470T03	470S03	1/2"	12	96	1.87
470T04	470S04	3/4"	12	72	2.34
470T05	470S05	1"	12	60	3.43
470T06	470S06	1-1/4"	6	48	4.32
470T07	470S07	1-1/2"	6	36	6.24
470T08	470S08	2"	6	24	10.14
470T09	470S09	2-1/2"	1	20	23.26
470T10	470S10	3"	1	10	26.99
470T11	470S11	4"	1	6	38.73




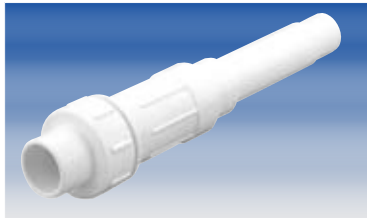
470T




470S

	MATCO-NORCA MODEL #	SIZE	INNER CARTON QUANTITY	MASTER CARTON QUANTITY	LIST PRICE
 400	400 COMPRESSION COUPLING - PVC				
	FITS IRON PIPE SIZE				
	400T02	3/8"	25	100	1.35
	400T03	1/2"	10	200	1.54
	400T04	3/4"	10	120	1.83
	400T05	1"	10	120	2.34
	400T06	1-1/4"	10	80	2.86
	400T07	1-1/2"	10	60	3.94
	400T08	2"	5	50	5.43
	400T09	2-1/2"	3	24	12.80
	400T10	3"	3	12	18.31
	400T11	4"	3	6	23.17
	400T13	6"	1	5	55.74

	MATCO-NORCA MODEL #	SIZE	INNER CARTON QUANTITY	MASTER CARTON QUANTITY	LIST PRICE
 401	401 COMPRESSION COUPLING - CPVC				
	FITS COPPER TUBE SIZE				
	401S03	1/2"	20	200	2.68
	401S04	3/4"	20	240	3.87
	401S05	1"	10	200	5.61

	MATCO-NORCA MODEL #	SIZE	INNER CARTON QUANTITY	MASTER CARTON QUANTITY	LIST PRICE		
 460T	460T EXPANDABLE COUPLING - PVC						
	NSF						
		Solvent	Size	Expands			
				From	To		
	460T03	1/2"	6-3/4"	8-1/2"	1	28	4.36
	460T04	3/4"	7-1/2"	9-3/4"	1	24	4.71
	460T05	1"	8-3/4"	11-1/4"	1	40	6.20
	460T06	1-1/4"	9"	11-3/4"	1	30	10.81
	460T07	1-1/2"	10"	13"	1	16	12.40
	460T08	2"	11-1/4"	14-1/4"	1	12	18.25
	460T09	2-1/2"	12-1/2"	17"	1	4	36.94
	460T10	3"	13-1/2"	17-3/4"	1	3	46.25
460T11	4"	16-3/4"	19-1/2"	1	2	80.80	

	MATCO-NORCA MODEL #	SIZE	INNER CARTON QUANTITY	MASTER CARTON QUANTITY	LIST PRICE
 420	420 COMPRESSION MALE ADAPTER - PVC				
	NSF				
	420T03	1/2"	10	200	1.24
	420T04	3/4"	30	120	1.99
	420T05	1"	20	120	2.33
	420T06	1-1/4"	20	80	2.73
	420T07	1-1/2"	20	80	3.37
	420T08	2"	20	80	4.27

MATCO-NORCA MODEL #	SIZE	INNER CARTON QUANTITY	MASTER CARTON QUANTITY	LIST PRICE
410	COMPRESSION TEE - PVC			THREADED RUN
410T03	1/2"	25	100	2.53
410T04	3/4"	10	80	3.52
410T05	1"	20	80	4.36
410T06	1-1/4"	15	60	5.76
410T07	1-1/2"	12	48	7.39
410T08	2"	10	40	9.77



410

MATCO-NORCA MODEL #	SIZE	INNER CARTON QUANTITY	MASTER CARTON QUANTITY	LIST PRICE
200	GLOBE VALVE - BRASS - HARD SEAT			125WOG
	IPS			
200T02	3/8"	10	100	4.60
200T03	1/2"	10	100	4.60
200T04	3/4"	5	60	6.22
200T05	1"	5	40	9.46
200T06	1-1/4"	5	30	13.86
200T07	1-1/2"	4	24	19.97
200T08	2"	2	16	29.22



200

MATCO-NORCA MODEL #	SIZE	INNER CARTON QUANTITY	MASTER CARTON QUANTITY	LIST PRICE
240	ANGLE CONTROL VALVE - BRASS			GLOBE PATTERN - SOFT SEAT - 200WOG
	IPS			
240T04	3/4"	4	24	9.56
240T05	1"	4	20	12.78
240T06	1-1/4"	2	10	34.95
240T07	1-1/2"	2	10	42.04
240T08	2"	2	10	50.52



240

MATCO-NORCA MODEL #	SIZE	INNER CARTON QUANTITY	MASTER CARTON QUANTITY	LIST PRICE
200L-AL	GLOBE VALVE - BRASS - LONG BONNET			SOFT SEAT
	Straight Pattern			
200LT3	1/2" IPS	12	72	5.26
200LC3	1/2" CxC	12	72	4.85
200LT4	3/4" IPS			6.59
200LC4	3/4" CxC			6.03
	Angle Pattern			
200ALT3	1/2" IPS	12	72	5.67
200ALC3	1/2" CxC	12	72	4.85



200LT



200ALC



201T



201X



201C

201 STOP VALVE - GLOBE STYLE SOFT SEAT - 125 WOG

MATCO-NORCA MODEL #	SIZE	INNER CARTON QUANTITY	MASTER CARTON QUANTITY	LIST PRICE
IPS				
201T02	3/8"	12	72	3.46
201T03	1/2"	12	72	3.61
201T04	3/4"	12	72	4.00
CxC				
201C03	1/2"	12	72	3.36
201C04	3/4"	12	72	3.90
Brass Cross Handle				
IPS				
201X03	1/2"	12	72	3.61
201X04	3/4"	12	72	4.04

202 STOP AND WASTE VALVE - GLOBE STYLE SOFT SEAT



202T



202C

MATCO-NORCA MODEL #	SIZE	INNER CARTON QUANTITY	MASTER CARTON QUANTITY	LIST PRICE
IPS				
202T03	1/2"	12	72	3.75
202T04	3/4"	12	72	4.14
CxC				
202C03	1/2"	12	72	3.51
202C04	3/4"	12	72	4.04
202SWC	WASTE CAP	12	144	.25

201A STOP VALVE - ANGLE GLOBE SOFT SEAT



201AT3



201AC3

MATCO-NORCA MODEL #	SIZE	INNER CARTON QUANTITY	MASTER CARTON QUANTITY	LIST PRICE
201AT3	1/2" IPS	12	72	4.33
201AC3	1/2" CxC	12	72	3.55



201CMP

201CM STOP VALVE COMPRESSION ENDS - BRASS NUT & FERRULE

MATCO-NORCA MODEL #	SIZE	INNER CARTON QUANTITY	MASTER CARTON QUANTITY	LIST PRICE
201CMP	1/2"	12	72	5.37
201CM4	3/4"	12	72	6.64



202CMP

MATCO-NORCA MODEL #	SIZE	INNER CARTON QUANTITY	MASTER CARTON QUANTITY	LIST PRICE
202CM STOP & WASTE VALVE				
COMPRESSION ENDS - BRASS NUT & FERRULE				
202CMP	1/2"	12	72	5.39
202CM4	3/4"	12	72	6.78



221



TF

MATCO-NORCA MODEL #	SIZE	INNER CARTON QUANTITY	MASTER CARTON QUANTITY	LIST PRICE
221/TF STOP VALVE - BRASS - CPVC CONNECTIONS				
221 - Valve With Transition Fittings				
221CP3	1/2"	12	72	7.89
221CP4	3/4"	6	48	9.94
TF - CPVC Transition Fittings Only 1.33				
TF03	1/2"	12	72	1.33
TF04	3/4"	12	72	1.71



205WH4

MATCO-NORCA MODEL #	SIZE	INNER CARTON QUANTITY	MASTER CARTON QUANTITY	LIST PRICE
205WH WATER HEATER DRAIN VALVE				
205WH3*	1/2" x 1-1/4" Long	12	72	4.40
205WH4**	3/4" x 2-1/4" Long	12	72	4.81
* 1/2" MIP x 1/2" SWT				
** 3/4" MIP x 1/2" FIP				



204



204LS3

MATCO-NORCA MODEL #	SIZE	INNER CARTON QUANTITY	MASTER CARTON QUANTITY	LIST PRICE
204 BOILER DRAIN				
LESS STUFFING BOX				
MIP		FIP		
204TM3*	204TF3 1/2"	12	72	2.83
204TM4	204TF4 3/4"	12	72	2.93
204LS3*	Long Shank 1/2" MIP With Locknut	12	72	3.70
204LS3P	Long Shank 1/2" MIP w/Locknut - Accepts Pex tube	12	72	3.64
* 1/2" MIP & 1/2" SWT				



205TM



205TF



205TR3

MATCO-NORCA MODEL #	SIZE	INNER CARTON QUANTITY	MASTER CARTON QUANTITY	LIST PRICE
205 BOILER DRAIN WITH STUFFING BOX				

MIP

FIP

205TM3*	205TF3	1/2"	12	72	3.16
205TM4	205TF4	3/4"	12	72	3.26

* 1/2" MIP & 1/2" SWT

COMPRESSION

205TR3	1/2" w/Nut & Ferrule	12	72	3.94
--------	----------------------	----	----	------

MATCO-NORCA MODEL #	SIZE	INNER CARTON QUANTITY	MASTER CARTON QUANTITY	LIST PRICE
205N BOILER DRAIN ANGLE SPOUT WITH STUFFING BOX - ECONOMY MODEL				



205F03N

MIP

205F03N*	1/2"	12	144	2.99
205F04N	3/4"	12	144	3.23

* 1/2" MIP & 1/2" SWT



205F03



205X03

MATCO-NORCA MODEL #	SIZE	INNER CARTON QUANTITY	MASTER CARTON QUANTITY	LIST PRICE
205F BOILER DRAIN - FULL FLOW ANGLE SPOUT WITH STUFFING BOX				

MIP

205F03*	1/2"	12	72	3.51
205F04	3/4"	12	72	3.60

* 1/2" MIP & 1/2" SWT

FIP

205FF3	1/2"	12	72	3.73
--------	------	----	----	------

BRASS CROSS HANDLE - MIP

205X03	1/2"	12	72	4.01
--------	------	----	----	------



206T



206C

MATCO-NORCA MODEL #	SIZE	INNER CARTON QUANTITY	MASTER CARTON QUANTITY	LIST PRICE
206 SILLCOCK - (LAWN FAUCET)				

FIP

206T03	1/2"	12	72	3.29
206T04	3/4"	12	72	3.54

SWT

206C03	1/2"	12	72	3.54
206C04	3/4"	12	72	3.69

MATCO-NORCA
MODEL #

SIZE

INNER
CARTON
QUANTITY

MASTER
CARTON
QUANTITY

LIST
PRICE



206TBV03

206TBV SILLCOCK - (LAWN FAUCET) BALL VALVE

FIP

206TBV03

1/2"

12

72



206T03H

206H SILLCOCK - (LAWN FAUCET) HEAVY PATTERN - STUFFING BOX

FIP

206T03H

1/2"

12

72

4.08

206T04H

3/4"

12

72

4.34



206T03VB

206VB SILLCOCK - (LAWN FAUCET) WITH ASSE 1011 VACUUM BREAKER

FIP

206T03VB

1/2"

12

72

6.96



203TF4



203IF4

203 GARDEN VALVE - BENT NOSE

FIP

203TF3

1/2"

12

72

4.44

203TF4

3/4"

12

72

4.44

203TF5

1"

12

72

4.80

Inverted Nose

203IF4

3/4"

12

72

4.44

Loose Key

203TL3

1/2"

12

72

5.69

203TL4

3/4"

12

72

5.69

203TL5

1"

12

72

5.98

Key Only

203TLK

KEY

12

72

.75



203TL4



203TLK



209006

MATCO-NORCA MODEL #	SIZE	INNER CARTON QUANTITY	MASTER CARTON QUANTITY	LIST PRICE
209 FROST FREE SILLCOCK				
1/2" IPS & 1/2" SWT LENGTH				
209004	4"	2	24	10.22
209006	6"	2	24	10.93
209008	8"	2	24	11.70
209010	10"	2	24	12.37
209012	12"	2	24	13.02
209014	14"	2	24	13.74
3/4" MIP & 1/2" FIP LENGTH				
209404	4"	2	24	10.57
209406	6"	2	24	11.34
209408	8"	2	24	12.05
209410	10"	2	24	12.78
209412	12"	2	24	13.38
209414	14"	2	24	14.15

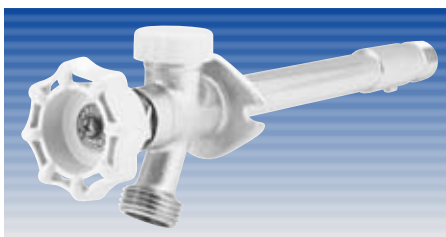


210006

MATCO-NORCA MODEL #	SIZE	INNER CARTON QUANTITY	MASTER CARTON QUANTITY	LIST PRICE
210 FROST FREE SILLCOCK ANTI-SIPHON				
1/2" IPS & 1/2" SWT LENGTH				
210004	4"	2	24	
210006	6"	2	24	
210008	8"	2	24	
210010	10"	2	24	
210012	12"	2	24	
210014	14"	2	24	



MATCO-NORCA MODEL #	SIZE	INNER CARTON QUANTITY	MASTER CARTON QUANTITY	LIST PRICE
212 FROST FREE SILLCOCK ANTI-SIPHON - IAPMO/CSA/ASSE				
1/2" IPS & 1/2" SWT LENGTH				
Replacement Parts Available				
212004	4"	2	40	14.58
212006	6"	2	40	19.69
212008	8"	1	30	20.43
212010	10"	1	30	21.21
212012	12"	1	30	21.99
212014	14"	1	24	22.77



212006



207TM



207TF

MATCO-NORCA MODEL #	SIZE	INNER CARTON QUANTITY	MASTER CARTON QUANTITY	LIST PRICE
207 HOSE BIBB No Kink				
MIP				
207TM3	1/2"	12	72	2.78
207TM4	3/4"	12	72	2.96
FIP				
207TF3	1/2"	12	72	2.73
207TF4	3/4"	12	72	2.86
SWT				
207C04	1/2" SWT & 3/4" Male SWT	12	72	3.32



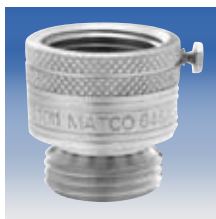
646R

MATCO-NORCA MODEL #	SIZE	INNER CARTON QUANTITY	MASTER CARTON QUANTITY	LIST PRICE
646R HOSE BIBB - CAST BRASS MALE				
646R03	1/2" MIP & 1/2" SWT	12	72	2.96
646R04	3/4" MIP	12	72	3.16
646R05	1" MIP	12	48	25.96



646BV

MATCO-NORCA MODEL #	SIZE	INNER CARTON QUANTITY	MASTER CARTON QUANTITY	LIST PRICE
646BV HOSE BIBB - MALE BALL VALVE				
646BV03	1/2" MIP & 1/2" SWT	6	24	4.62
646BV04	3/4" MIP	6	24	5.65



646AS4

MATCO-NORCA MODEL #	SIZE	INNER CARTON QUANTITY	MASTER CARTON QUANTITY	LIST PRICE
646AS HOSE BIBB VACUUM BREAKER ASSE 1011 - HOSE CONNECTION				
646AS4	3/4" Brass Finish	12	144	3.63
646ASC	3/4" Chrome Plated	12	144	4.08
C-646AS4	3/4" (Carded) Brass	6	72	4.98



208

MATCO-NORCA MODEL #	SIZE	INNER CARTON QUANTITY	MASTER CARTON QUANTITY	LIST PRICE
208 EVAPORATOR COOLER VALVE				
208T04	3/4" Female Hose x 3/4" Hose	12	72	3.52



FY-690



MATCO-NORCA MODEL #	SIZE	INNER CARTON QUANTITY	MASTER CARTON QUANTITY	LIST PRICE
FY HOSE BIBB - BRASS - TEE HANDLES				
FY-690	CP Hose End Outlet 1/2" MIP Inlet	12	72	5.98
FY-695	CP Hose End Outlet 3/4" MIP Inlet	12	72	6.20
FY-691	CP Plain End Outlet 1/2" MIP Inlet	12	72	5.66
FY-680	CP Hose End Outlet 1/2" FIP Inlet- Flanged	12	72	6.89
FY-675	CP Plain End Outlet 1/2" FIP Inlet- Flanged	12	72	6.58



FY-691



FY-680



FY-675

FY HOSE BIBB - BRASS - TEE HANDLES



FY-692



FY-692	RB Plain Outlet 1/2" MIP Inlet	12	72	5.66
FY-686	RB Hose End Outlet 1/2" FIP Inlet- Flanged	12	72	5.98
FY-681	CP Plain End Outlet 1/2" MIP Inlet-Adj. Flange	12	72	7.13
FY-682	CP Hose End Outlet 1/2" MIP Inlet-Adj. Flange	12	72	7.13



FY-686



FY-681



FY-682

MATCO-NORCA
MODEL #

SIZE

INNER
CARTON
QUANTITY

MASTER
CARTON
QUANTITY

LIST
PRICE

N-M

NON-METALLIC

LOW PRESSURE



201PV03

Stop Valve - PVC - Solvent

201PV03	1/2"	12	72	2.96
201PV04	3/4"	12	72	3.16

Stop & Waste Valve - PVC - Solvent

202PV03	1/2"	12	72	3.15
202PV04	3/4"	12	72	3.35

Stop Valve - Celcon - Threaded

201CE03	1/2"	12	144	3.52
201CE04	3/4"	12	144	3.64

Stop & Waste Valve - Celcon - Threaded

202CE03	1/2"	12	144	3.54
202CE04	3/4"	12	144	3.65

Stop Valve - CPVC - Solvent

201CP03	1/2"	12	144	3.78
201CP04	3/4"	12	144	3.94

Stop & Waste Valve - CPVC - Solvent

202CP03	1/2"	12	144	3.95
202CP04	3/4"	12	144	4.11

Hose Bibb - Celcon - Threaded

646CE03	1/2"	12	144	3.18
646CE04	3/4"	12	144	3.23

Boiler Drain - Celcon - Threaded

205CE03	1/2"	12	144	2.86
205CE04	3/4"	12	144	2.93

No-Kink Boiler Drain - Celcon - Threaded

207CE03	1/2"	12	144	3.26
207CE04	3/4"	12	144	3.32



201CE03



202CE03



646CE03



205CE03



201G

201G

GROUND KEY STOP - BRONZE

WITH DRAIN

IPS

201G03	1/2"	6	36	12.61
201G04	3/4"	6	36	14.46
201G05	1"	4	24	27.84

MATCO-NORCA
MODEL #

SIZE

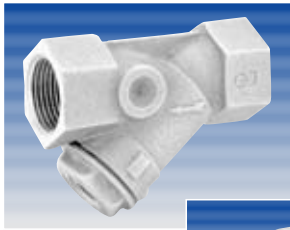
INNER
CARTON
QUANTITY

MASTER
CARTON
QUANTITY

LIST
PRICE

143 Y-STRAINER - BRONZE

40 MESH STAINLESS SCREEN 400WOG



143T



143C

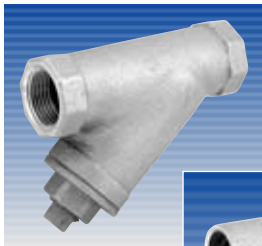
Blow Off Tap - Less Plug - Compact Design

IPS	C x C	Size	Tap Size			
143T02	143C02	3/8"	1/4"	20	200	13.67
143T03	143C03	1/2"	1/4"	20	120	15.12
143T04	143C04	3/4"	1/4"	10	100	19.61
143T05	143C05	1"	1/2"	10	60	26.95
143T06	143C06	1-1/4"	1/2"	5	30	39.61
143T07	143C07	1-1/2"	3/4"	4	24	52.79
143T08	143C08	2"	1"	2	16	83.93

Y Strainers with solid caps are available: Product number 142 - P.O.A.

145 Y-STRAINER - BRONZE - BRASS PLUG

40 MESH STAINLESS SCREEN 400WOG



145T

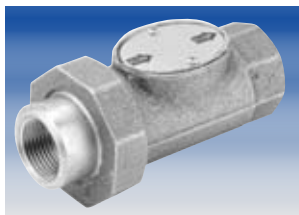


145C

IPS	C x C	Size	Tap Size			
145T01	145C01	1/4"	1/8"	12	60	10.17
145T02	145C02	3/8"	1/8"	12	60	10.17
145T03	145C03	1/2"	1/4"	12	48	10.17
145T04	145C04	3/4"	1/4"	8	48	14.57
145T05	145C05	1"	3/8"	8	32	21.31
145T06	145C06	1-1/4"	3/8"	8	32	31.54
145T07	145C07	1-1/2"	1/2"	2	16	44.16
145T08	145C08	2"	1/2"	2	8	64.12
145T09	145C09	2-1/2"	1-1/4"	1	6	102.83
145T10	145C10	3"	1-1/2"	1	4	155.61

DCV DUAL CHECK VALVES - BACKFLOW PREVENTERS

25 - 175 PSI

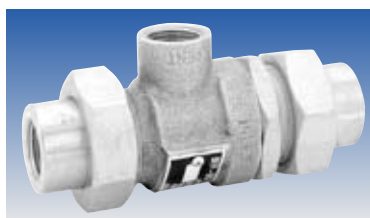


DCV-04

IPS	Size			
DCV-04	3/4"	12	120	27.42
DCV-05	1"	12	120	28.81

BFP BACK FLOW PREVENTER - BRASS

ATMOSPHERIC VENT



BFP-90

IPS	Size			
BFP-90-1/2	1/2"	1	24	39.33
BFP-90-3/4	3/4"	1	24	40.87



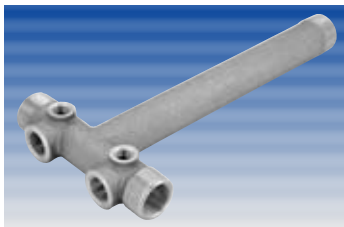
PRV0303

MATCO-NORCA MODEL #	SIZE	INNER CARTON QUANTITY	MASTER CARTON QUANTITY	LIST PRICE
PRV PRESSURE RELIEF VALVE				75PSI
PRV0303	1/2" X 1/2"	10	120	5.25
PRV0404	3/4" X 3/4"	10	120	5.73



901

MATCO-NORCA MODEL #	SIZE	INNER CARTON QUANTITY	MASTER CARTON QUANTITY	LIST PRICE
901 PITLESS ADAPTER				BRONZE
901PT5	1"	4	16	29.24
901PT6	1-1/4"	2	12	50.64



TT0511

MATCO-NORCA MODEL #	SIZE	INNER CARTON QUANTITY	MASTER CARTON QUANTITY	LIST PRICE
TT TANK TEE				BRONZE
1" MIP & 3/4" FIP With Two 1/2" & Two 1/4" Taps				
Size				
TT0545	1" x 4-1/2"	5	40	23.45
TT0511	1" x 11"	2	24	26.95
TT0514	1" x 14"	2	20	31.19
TT0645	1-1/4" x 4-1/2"			26.88
TT0614	1-1/4" x 14"			62.50



451

MATCO-NORCA MODEL #	SIZE	INNER CARTON QUANTITY	MASTER CARTON QUANTITY	LIST PRICE
451 BRASS SADDLE TEE				FOR POLYETHELENE TUBING ONLY
451403	3/4" x 1/2"	40	160	2.74
451404	3/4" x 3/4"	40	160	3.02
451503	1" x 1/2"	36	144	3.34
451504	1" x 3/4"	36	144	3.65
451603	1-1/4" x 1/2"	12	60	5.09
451604	1-1/4" x 3/4"	12	60	5.37
451605	1-1/4" x 1"	10	60	7.77
451703	1-1/2" x 1/2"	10	60	6.05
451704	1-1/2" x 3/4"	12	60	6.05
451705	1-1/2" x 1"	15	60	8.76
451803	2" x 1/2"	10	40	6.58
451804	2" x 3/4"	10	40	7.24
451805	2" x 1"	10	40	12.10
4511004	3" x 3/4"	5	20	17.68



453303

MATCO-NORCA MODEL #	PIPE	OUTLET	INNER CARTON QUANTITY	MASTER CARTON QUANTITY	LIST PRICE
453 FORGED BRASS SADDLE TEE				FOR IPS & COPPER	
453303	1/2" IP	x 1/2" FIP	12	72	4.34
453303C	1/2" Copper	x 1/2" FIP	12	72	4.45
453403	3/4" IP	x 1/2" FIP	12	72	4.60



IGMA



IGMAX



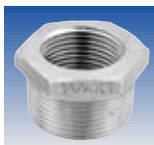
IBMAX



IBMA



ISMA



SSB-0605



IGCP

MATCO-NORCA
MODEL #

SIZE

INNER
CARTON
QUANTITY

MASTER
CARTON
QUANTITY

LIST
PRICE

IGMA INSERT X MALE ADAPTER - GALVANIZED

IGMA03	1/2"	24	360	1.21
IGMA04	3/4"	20	300	1.45
IGMA05	1"	16	192	1.99
IGMA06	1-1/4"	12	108	3.27
IGMA07	1-1/2"	6	90	4.08
IGMA08	2"	5	60	5.31
IGMA09	2-1/2"	1	1	23.59
IGMA10	3	1	1	30.63
IGMA11	4	1	1	49.59
IGMA0605	1-1/4" x 1"	20	240	12.78
IGMAX05	1" Extra Long	12	120	4.27
IGMAX06	1-1/4" Extra Long	10	100	5.64

IBMA INSERT X MALE ADAPTER - BRONZE

IBMA03	1/2"	10	200	2.95
IBMA04	3/4"	10	200	3.63
IBMA05	1"	50	100	5.34
IBMA06	1-1/4"	10	100	7.26
IBMA07	1-1/2"	5	80	9.97
IBMA08	2"	5	50	12.72
IBMA0605	1-1/4" Male x 1" Insert	10	100	6.34
IBMAX05	1" x 5" Long	8	80	8.33
IBMAX06	1-1/4" x 5" Long	10	100	11.12

ISMA SS PRODUCTS - ADAPTER & BUSHING

ISMA05	1" Insert x Male Adapter	10	100	11.59
ISMA0605	1-1/4" Male x 1" Insert	5	100	12.55
SSB-0605	1-1/4" x 1" Bushing	10	200	8.08

IBM/IGM VENTURI MALE ADAPTERS

IBMAX056	1" x 6" Brass	1	1	27.63
IGMAX056	1" x 6" Galvanized	1	1	4.48
IGMAX058	1" x 8" Galvanized	1	1	5.42
IGMAX066	1-1/4" x 6" Galvanized	1	1	5.75
IGMAX068	1-1/4" x 8" Galvanized	1	1	6.88

IGCP INSERT X INSERT COUPLING - GALVANIZED

IGCP03	1/2"	30	360	.95
IGCP04	3/4"	20	300	1.11
IGCP05	1"	20	240	1.50
IGCP06	1-1/4"	16	144	2.83
IGCP07	1-1/2"	12	108	3.64
IGCP08	2"	5	60	4.55
IGCP09	2-1/2"	1	1	10.74
IGCP10	3"	1	1	16.16
IGCP11	4"	1	1	36.18
IGCP13	6"	1	1	54.74



IBCP

MATCO-NORCA MODEL #	SIZE	INNER CARTON QUANTITY	MASTER CARTON QUANTITY	LIST PRICE
IBCP INSERT COUPLING - BRONZE				
			INSERT X INSERT	
IBCP03	1/2"	10	200	2.98
IBCP04	3/4"	10	200	3.76
IBCP05	1"	10	100	5.75
IBCP06	1-1/4"	10	100	8.26
IBCP07	1-1/2"	5	50	9.84
IBCP08	2"	5	50	12.95



IBHL

MATCO-NORCA MODEL #	SIZE	INNER CARTON QUANTITY	MASTER CARTON QUANTITY	LIST PRICE
IBHL HYDRANT ADAPTER - BRONZE				
			INSERT X MALE - F2030	
IBHL04	3/4"	10	100	5.12
IBHL05	1"	10	100	6.70
IBHL06	1-1/4"	5	50	12.67
IBHLO504	1" x 3/4"	10	100	6.28



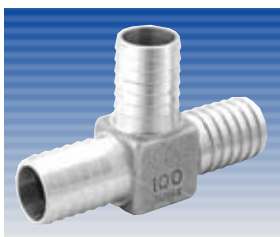
IBIL

MATCO-NORCA MODEL #	SIZE	INNER CARTON QUANTITY	MASTER CARTON QUANTITY	LIST PRICE
IBIL INSERT ELBOW - BRONZE				
			INSERT X INSERT - F2040	
IBILO4	3/4"	10	200	5.12
IBILO5	1"	10	100	6.11
IBILO6	1-1/4"	10	50	11.82



IBHT

MATCO-NORCA MODEL #	SIZE	INNER CARTON QUANTITY	MASTER CARTON QUANTITY	LIST PRICE
IBHT HYDRANT TEE - BRONZE				
			INSERT X MALE - F2050	
IBHT04	3/4"	10	100	7.16
IBHT05	1"	10	100	9.72
IBHT06	1-1/4"	10	100	15.37



IBIT

MATCO-NORCA MODEL #	SIZE	INNER CARTON QUANTITY	MASTER CARTON QUANTITY	LIST PRICE
IBIT INSERT TEE - BRONZE				
			INSERT X INSERT - F2060	
IBIT04	3/4"	10	100	6.11
IBIT05	1"	10	100	8.67
IBIT06	1-1/4"	10	50	14.85



IBMAR

MATCO-NORCA MODEL #	SIZE	INNER CARTON QUANTITY	MASTER CARTON QUANTITY	LIST PRICE
IBMAR ROPE ADAPTER - BRONZE				
INSERT X MALE W/ROPE EYE - F2070				
IBMAR05	1" x 1"	10	100	7.16
IBMAR06	1-1/4" x 1-1/4"	10	100	9.26
IBMAR56	1" x 1-1/4"	10	100	7.68



IBFA

MATCO-NORCA MODEL #	SIZE	INNER CARTON QUANTITY	MASTER CARTON QUANTITY	LIST PRICE
IBFA FEMALE ADAPTER - BRONZE				
INSERT X FEMALE - F2010				
IBFA03	1/2"	10	200	4.13
IBFA04	3/4"	10	100	4.60
IBFA05	1"	10	100	5.64
IBFA06	1-1/4"	10	100	7.68
IBFA07	1-1/2"	5	50	11.82
IBFA08	2"	5	50	14.85



434-0404



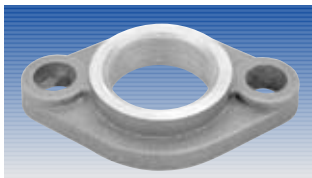
434-0404D

MATCO-NORCA MODEL #	SIZE	INNER CARTON QUANTITY	MASTER CARTON QUANTITY	LIST PRICE
434 METER VALVE				
BRASS				
Angle Valve - Flare x IPS				
434-0403	3/4" FL x 1/2" IPS	6	36	19.23
434-0404	3/4" FL x 3/4" IPS	6	36	23.73
434-0504	1" FL x 3/4" IPS	4	24	34.29
434-0505	1" FL x 1" IPS	4	24	31.75
Angle Valve With Drain				
434-0403D	3/4" FL x 1/2" IPS	6	36	19.73
434-0404D	3/4" FL x 3/4" IPS	6	36	19.73
434-0504D	1" FL x 3/4" IPS	4	24	23.91
434-0505D	1" FL x 1" IPS	4	24	34.23



433

MATCO-NORCA MODEL #	SIZE	INNER CARTON QUANTITY	MASTER CARTON QUANTITY	LIST PRICE
433 WATER METER COUPLING WITH GASKET				
BRASS				
433T03	1/2"	20	160	3.60
433T04	3/4"	20	100	4.05
433T05	1"	10	100	6.28
433T07	1-1/2"	1	24	17.10
433T08	2"	1	24	21.69



431

MATCO-NORCA MODEL #	SIZE	INNER CARTON QUANTITY	MASTER CARTON QUANTITY	LIST PRICE
431	WATER METER FLANGE - OVAL			BRONZE
431T07	1-1/2"	4	32	17.59
431T08	2"	2	20	18.71



BARVY

BARVY	STEAM RADIATOR ANGLE VALVE			BRASS - HEAVY PATTERN
BARVY-0500	1/2" FIP w/Nut & Tailpiece	10	60	10.97
BARVY-0750	3/4" FIP w/Nut & Tailpiece	6	48	12.02
BARVY-1000	1" FIP w/Nut & Tailpiece	4	36	13.78
BARVY-1250	1-1/4" FIP w/Nut & Tailpiece	2	24	18.34
BARVY-1500	1-1/2" FIP w/Nut & Tailpiece	2	16	29.08



BARV

BARV	STEAM RADIATOR ANGLE VALVE			BRONZE - HEAVY PATTERN
BARV-0500	1/2" FIP w/Nut & Tailpiece	6	60	11.48
BARV-0750	3/4" FIP w/Nut & Tailpiece	6	48	16.76
BARV-1000	1" FIP w/Nut & Tailpiece	4	24	21.68
BARV-1250	1-1/4" FIP w/Nut & Tailpiece	2	24	28.74
BARV-1500	1-1/2" FIP w/Nut & Tailpiece	2	18	36.62
BARV-2000	2" FIP w/Nut & Tailpiece	4	12	75.67



SGV

SGV	RADIATOR GATE VALVE			BRASS
SGV-1001	1" FIP w/Nut & Tailpiece	4	36	18.68
SGV-1251	1-1/4" FIP w/Nut & Tailpiece	4	24	26.20



BSGV

BSGV	RADIATOR GATE VALVE			BRONZE
BSGV-0500	1/2" FIP w/Nut & Tailpiece			15.19
BSGV-0750	3/4" FIP w/Nut & Tailpiece	6	48	16.73
BSGV-1000	1" FIP w/Nut & Tailpiece	4	36	24.70
BSGV-1250	1-1/4" FIP w/Nut & Tailpiece	2	24	34.03



AHV

MATCO-NORCA MODEL #	SIZE	INNER CARTON QUANTITY	MASTER CARTON QUANTITY	LIST PRICE
AHV HOT WATER RADIATOR VALVE				
BRASS				
AHV-0500	1/2" FIP w/Nut & Tailpiece	6	60	9.81
AHV-0750	3/4" FIP w/Nut & Tailpiece	6	48	14.61
AHV-0500C	1/2" SWT w/Nut & Tailpiece	6	60	9.81
AHV-0750C	3/4" SWT w/Nut & Tailpiece	6	60	14.61



BCV

MATCO-NORCA MODEL #	SIZE	INNER CARTON QUANTITY	MASTER CARTON QUANTITY	LIST PRICE
BCV CONVECTOR VALVE				
BRONZE				
BCV-1000	1"	2	24	27.22
BCV-1250	1-1/4"	2	20	33.47



CK-100



KEY-100



HAV-125

MATCO-NORCA MODEL #	DESCRIPTION	SIZE	INNER CARTON QUANTITY	MASTER CARTON QUANTITY	LIST PRICE
CK/KEY COIN KEY AIR VALVE					
CK-100	Coin Key Air Valve Nickle Plated	1/8"	100	1000	.92
CKU-102	Key Air Valve	1/8"	100	1000	.92
KEY-100	Key For Air Valve	1/8"	1	3000	.36
HAV-125	Auto Vent HW & Steam	1/8"	50	500	5.93



AVA-125

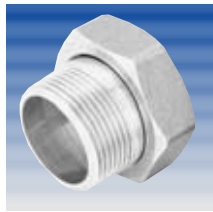


AVS-125



ADJ-180

MATCO-NORCA MODEL #	DESCRIPTION	SIZE	INNER CARTON QUANTITY	MASTER CARTON QUANTITY	LIST PRICE
AVA/ADJ CHROME PLATED STEAM AIR VALVE					
AVA-125	1/8" Angle - MIP		12	144	5.11
AVS-125	1/8" Straight - MIP		12	144	5.89
AVS-250	1/4" Straight - MIP		12	144	5.98
AVS-750	3/4" MIP x 1/2 FIP Straight		12	144	6.96
ADJ-180	1/8" Angle MIP Adjustable		12	144	6.13



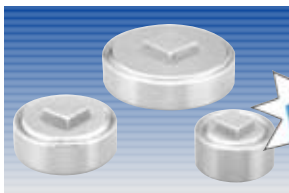
NT

MATCO-NORCA MODEL #	SIZE	INNER CARTON QUANTITY	MASTER CARTON QUANTITY	LIST PRICE
NT RADIATOR VALVE NUT & TAILPIECE BRASS				
NT-100	1"	25	100	4.85
NT-125	1-1/4"	20	100	7.86



ENT

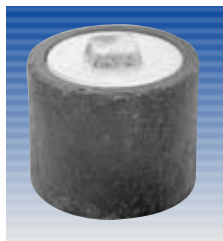
MATCO-NORCA MODEL #	SIZE	INNER CARTON QUANTITY	MASTER CARTON QUANTITY	LIST PRICE
ENT UNION ELBOW BRASS W/NUT & TAILPIECE				
ENT-050	1/2" IPS x IPS	10	100	4.55
ENT-075	3/4" IPS x IPS	10	100	6.25
ENT-100	1" IPS x IPS	10	50	10.31
ENT-050C	1/2" IPS x SWT	10	100	4.55
ENT-075C	3/4" IPS x SWT	10	100	6.25



CO

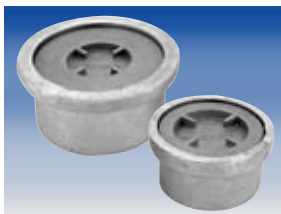


MATCO-NORCA MODEL #	SIZE	INNER CARTON QUANTITY	MASTER CARTON QUANTITY	LIST PRICE
CO BRASS BODY CLEANOUT - COPPER FITTING SIZE				
CO-150	1-1/2" Brass Flush Cleanout	1	180	
CO-200	2" Brass Flush Cleanout	1	150	
CO-300	3" Brass Flush Cleanout	1	120	



IBC

MATCO-NORCA MODEL #	SIZE	INNER CARTON QUANTITY	MASTER CARTON QUANTITY	LIST PRICE
IBC IRON BODY CLEANOUT W/BRASS PLUG				
IBC-43	4" Pipe Size x 3" Square Plug	1	600	9.96
IBC-435	4" Pipe Size x 3-1/2" Square Plug	1	600	11.29
IBC-43CS	4" Pipe Size, 3" Recessed Plug	1	600	11.29

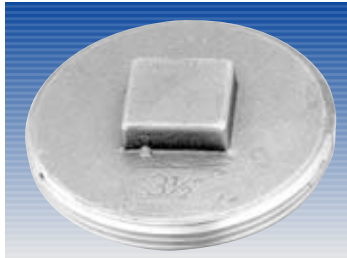


FB

MATCO-NORCA MODEL #	SIZE	INNER CARTON QUANTITY	MASTER CARTON QUANTITY	LIST PRICE
FB OIL FILL BOXES - GALVANIZED IRON				
FB-201	2"	1	30	18.28

MATCO-NORCA MODEL #	SIZE	INNER CARTON QUANTITY	MASTER CARTON QUANTITY	LIST PRICE
---------------------	------	-----------------------	------------------------	------------

CP BRASS CLEAN OUT PLUGS (TRAP SCREWS)

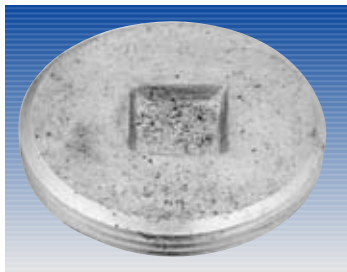


CP-350

Raised Square Head

CP-100	1"	25	500	1.18
CP-125	1-1/4"	100	500	1.24
CP-150	1-1/2"	100	200	1.58
CP-200	2"	100	200	2.13
CP-250	2-1/2"	100	200	3.02
CP-300	3"	20	160	4.17
CP-350	3-1/2"	20	120	5.11
CP-400	4"	15	90	6.46
CP-500	5"	10	60	10.69
CP-600	6"	10	40	17.23
CP-800	8"	1	10	36.23

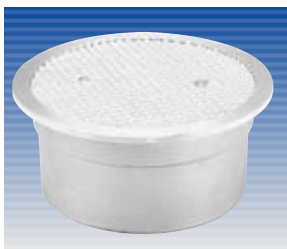
CPC BRASS CLEAN OUT PLUGS (TRAP SCREWS)



CPC-350

Countersunk Square Head

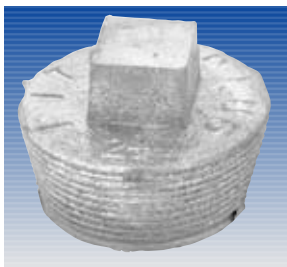
CPC-150	1-1/2"	100	400	1.63
CPC-200	2"	100	200	2.39
CPC-250	2-1/2"	100	200	3.33
CPC-300	3"	20	160	4.07
CPC-350	3-1/2"	20	120	5.01
CPC-400	4"	15	90	6.51
CPC-500	5"	10	60	10.91
CPC-600	6"	10	40	17.81
CPC-800	8"	5	10	34.19



DKP

DKP DECK CLEANOUT LESS PLUG - CAST BRASS

DKP-201	2"	1	40	15.94
DKP-301	3"	1	20	20.85
DKP-401	4"	1	20	30.32
DKP-501	5"	1	8	60.63
DKP-601	6"	1	8	70.57



LFP

LFP LEAD FITALL PLUGS

LFP200	2"	24	48	4.81
LFP250	2-1/2"	24	48	4.97
LFP300	3"	12	24	5.36
LFP350	3-1/2"	12	24	5.31
LFP400	4"	12	24	6.03
LFP450	4-1/2"	1	12	9.89
LFP500	5"	1	12	11.53
LFP550	5-1/2"	1	12	12.68
LFP600	6"	1	12	13.39



BTP

MATCO-NORCA MODEL #	SIZE	INNER CARTON QUANTITY	MASTER CARTON QUANTITY	LIST PRICE
BTP C.I. BOILER TUBE PLUGS				
BTP-150	1-1/2"	1	60	4.65
BTP-200	2"	1	36	6.22
BTP-250	2-1/2"	1	30	6.22
BTP-300	3"	1	29	7.16
BTP-350	3-1/2"	1	30	12.63
BTP-400	4"	1	11	16.25



TP

MATCO-NORCA MODEL #	SIZE	INNER CARTON QUANTITY	MASTER CARTON QUANTITY	LIST PRICE
TP TEST PLUGS W/RUBBER GASKET & WING NUT				
TP-07	1-1/2"	6	36	1.64
TP-08	2"	6	36	1.90
TP-10	3"	6	36	2.89
TP-11	4"	6	36	3.64
TP-13	6"	1	36	13.28



TF

MATCO-NORCA MODEL #	SIZE	INNER CARTON QUANTITY	MASTER CARTON QUANTITY	LIST PRICE
TF TEFLON TAPE				
TF03260	1/2" x 260"	100	500	.51
TF03520	1/2" x 520"	100	500	.70
TF031296	1/2" x 1296"	50	250	1.89
TF04260	3/4" x 260"	70	144	.83
TF04520	3/4" x 520"	70	144	1.17
TF041296	3/4" x 1296"	50	250	3.19
TFO5260	1" x 260"	50	250	1.04
TF05520	1" x 520"	50	250	1.51
TF051296	1" x 1296"	50	125	4.24



TE0460

MATCO-NORCA MODEL #	SIZE	INNER CARTON QUANTITY	MASTER CARTON QUANTITY	LIST PRICE
TE PVC ELECTRICAL TAPE 60' ROLLS				
TE0460	3/4" x 7 mil.	10	250	1.19



TW0810

MATCO-NORCA MODEL #	SIZE	INNER CARTON QUANTITY	MASTER CARTON QUANTITY	LIST PRICE
TW PVC PIPE WRAP 100' ROLLS - UPC				
TW0810	2" x 10 mil.	1	36	8.74
TW0820	2" x 20 mil.	1	36	15.87
TW1110	4" x 10 mil.	1	12	18.86

MATCO-NORCA
MODEL #

SIZE

INNER
CARTON
QUANTITY

MASTER
CARTON
QUANTITY

LIST
PRICE

FCP

FLOOR & CEILING PLATES - CHROME PLATED STEEL

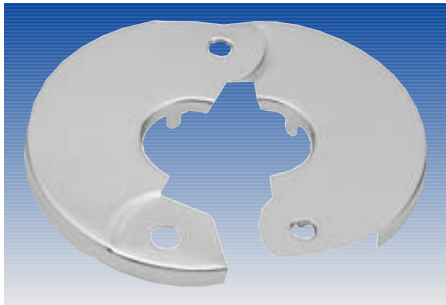
FITS IRON PIPE

Fits Iron Pipe - Box Quantity Only

FCPT02	3/8"	12	288	.70
FCPT03	1/2"	12	288	.70
FCPT04	3/4"	12	288	.70
FCPT05	1"	12	288	.76
FCPT06	1-1/4"	12	576	.76
FCPT07	1-1/2"	12	576	.76
FCPT08	2"	6	576	.92

Fits Copper Tube - Box Quantity Only

FCPC03	1/2"	12	288	.70
FCPC04	3/4"	12	576	.70
FCPC05	1"	12	576	.70
FCPC06	1-1/4"	12	288	.76
FCPC07	1-1/2"	12	288	.76



FCP

ESC

LOW PATTERN ESCUTCHEON - CHROME PLATED STEEL

Fits Iron Pipe - Box Quantity Only

ESCT02	3/8"	12	288	.19
ESCT03	1/2"	12	288	.19
ESCT04	3/4"	12	288	.19
ESCT05	1"	12	288	.27
ESCT06	1-1/4"	12	576	.30
ESCT07	1-1/2"	12	576	.32
ESCT08	2"	6	576	.48

Fits Copper Tube - Box Quantity Only

ESCC03	1/2"	25	500	.19
ESCC04	3/4"	25	500	.19



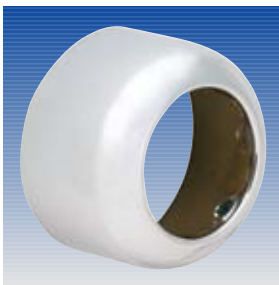
ESCT

BPF

BOX PATTERN ESCUTCHEON - CHROME PLATED STEEL

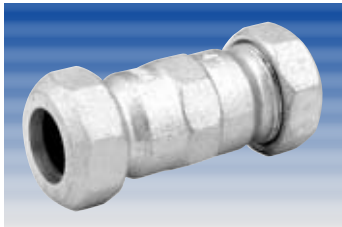
Box Quantity Only

BPFT07	1-1/2" IPS	50	200	.85
BPF125OD	1-1/4" Tubular O.D. Size	50	200	.85
BPF150OD	1-1/2" Tubular O.D. Size	50	200	.85



BPF

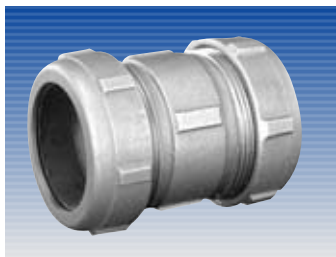
MATCO-NORCA MODEL #	FITS IRON PIPE SIZE	FITS COPPER TUBE SIZE	INNER CARTON QUANTITY	MASTER CARTON QUANTITY	LIST PRICE
440 COMPRESSION COUPLING - DRESSER STYLE - GALVANIZED 5" LENGTH - LONG PATTERN					
440L03	1/2"	3/4"	12	72	4.28
440L04	3/4"	1"	12	48	5.46
440L05	1"	1-1/4"	12	48	7.13
440L06	1-1/4"	1-1/2"	6	36	9.03
440L07	1-1/2"	-	6	24	10.69
440L08	2"	-	6	18	15.44



440

See Our Clampette Catalog for Heavier Pattern Couplings

MATCO-NORCA MODEL #	FITS IRON PIPE SIZE	FITS COPPER TUBE SIZE	INNER CARTON QUANTITY	MASTER CARTON QUANTITY	LIST PRICE
450T COMPRESSION COUPLING - BRASS 3 INCH LENGTH - SHORT PATTERN					
450T02	3/8"	1/2"	24	120	3.70
450T03	1/2"	3/4"	12	120	4.95
450T04	3/4"	1"	12	60	7.80
450T05	1"	1-1/4"	12	60	8.18
450T06	1-1/4"	1-1/2"	12	48	12.40
450T07	1-1/2"	-	12	36	13.31
450T08	2"	-	12	36	17.78



450T

MATCO-NORCA MODEL #	FITS IRON PIPE SIZE	FITS COPPER TUBE SIZE	INNER CARTON QUANTITY	MASTER CARTON QUANTITY	LIST PRICE
450L COMPRESSION COUPLING - BRASS 5 INCH LENGTH - LONG PATTERN					
450L02	3/8"	1/2"	24	120	5.03
450L03	1/2"	3/4"	12	120	6.56
450L04	3/4"	1"	12	60	10.41
450L05	1"	1-1/4"	12	60	10.93
450L06	1-1/4"	1-1/2"	12	48	15.54
450L07	1-1/2"	-	12	36	16.59
450L08	2"	-	12	36	23.14
450L08C	-	2"	12	36	23.14



450L

MATCO-NORCA MODEL #	FITS IRON PIPE SIZE	FITS COPPER TUBE SIZE	SIDE OUTLET	INNER CARTON QUANTITY	MASTER CARTON QUANTITY	LIST PRICE
450 COMPRESSION TEE BRONZE						
450-08	3/8"	1/2"	1/2" IPS	12	144	4.44
450-09	1/2"	3/4"	3/4" IPS	12	96	5.89
450-10	3/4"	1"	1" IPS	12	72	9.89
450-11	1/2"	3/4"	1/2" IPS	12	96	5.40
450-12	3/4"	1"	1/2" IPS	12	72	10.11
450-13	3/4"	1"	3/4" IPS	12	72	8.72
450-14	1"	1-1/4"	3/4" IPS	6	60	10.37
450-15	1"	1-1/4"	1" IPS	6	60	11.07
450-16	1/2"	3/4"	3/4" SWT	6	60	5.98
450-17	3/4"	1"	1" SWT	6	72	7.70
450-18	1"	1-1/4"	1-1/4" SWT	6	60	9.04
450-19	1-1/4"	1-1/2"	1-1/4" SWT	6	36	17.74
450-20	1-1/4"	-	1-1/2" SWT	6	24	21.38
450-21	2"	-	2" SWT	6	24	27.69



450

MATCO-NORCA
MODEL #

SIZE

INNER
CARTON
QUANTITY

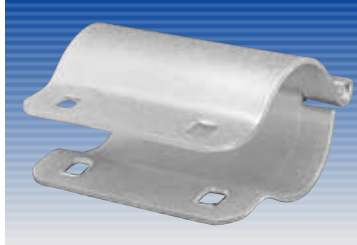
MASTER
CARTON
QUANTITY

LIST
PRICE

460

PIPE REPAIR CLAMP - GALVANIZED

FOR IPS SIZE - RUBBER GASKET



460

460003	1/2"	10	100	4.00
460004	3/4"	10	100	4.09
460005	1"	5	50	4.54
460006	1-1/4"	5	50	5.84
460007	1-1/2"	5	50	5.98
460008	2"	5	50	6.49
460009	2-1/2"	3	30	8.28
460010	3"	3	30	9.04

See Our Clampette Catalog For Clamps Made in the USA

465

PIPE REPAIR CLAMP - STAINLESS STEEL

FOR IPS SIZE



465083

3" clamp w/one bolt

465023	3/8"	6	72	4.75
465033	1/2"	6	72	4.75
465043	3/4"	6	72	4.94
465053	1"	6	72	5.41
465063	1-1/4"	6	72	6.48
465073	1-1/2"	6	72	6.53
465083	2"	6	72	7.43
465093	2-1/2"	6	48	8.26
465103	3"	6	48	8.62
465113	4"	6	24	9.69

6" clamp w/two bolts



465056

465026	3/8"	6	36	9.09
465036	1/2"	6	36	9.09
465046	3/4"	6	36	9.33
465056	1"	6	36	9.45
465066	1-1/4"	6	36	10.45
465076	1-1/2"	6	36	12.06
465086	2"	6	36	13.90
465096	2-1/2"	6	24	14.61
465106	3"	6	24	15.03
465116	4"	6	24	15.75

See Our Clampette Catalog For Clamps Made in the USA



452


NO-HUB SOIL PIPE COUPLING


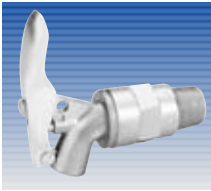
UPC

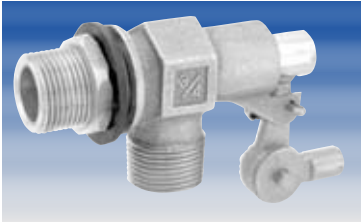



452


452007	1-1/2"	1	100	3.52
452008	2"	1	100	3.74
452010	3"	1	100	4.01
452011	4"	1	100	4.81
452012	5"	1	30	11.32
452013	6"	1	30	12.55
452014	8"	1	16	20.56
452015	10"			28.08
452087	2 x 1-1/2"	1	100	4.54
4521008	3" x 2"	1	100	6.15
4521108	4" x 2"	1	100	10.68
4521110	4" x 3"	1	100	9.34

		MATCO-NORCA MODEL #		INNER CARTON QUANTITY	MASTER CARTON QUANTITY	LIST PRICE
OTV		OIL TANK VALVE		BRASS - HARD SEAT		
		OTV-100	1/2" MIP X 3/8" MIP	6	72	11.03
		OTV-200	1/2" MIP X 3/8" FL.	6	72	11.71
OTV100	OTV200					


		59	OIL BARREL FAUCET	LOCKING LEVER		
		59PSL4	3/4" MIP X Plain Spout Bronze	6	36	20.39
		59TSL4	3/4" MIP X HPT Spout Bronze	6	36	20.08
		59DB04	3/4" MIP X HPT Spout Zamac	10	100	6.11
59 PSL4	59 DB04					

		FV	FLOAT VALVE - BRONZE				
Straight Thread Male Inlet - Plain Outlet							
				Rod Size			
		FV-303P	1/2"	1/4" x 20"	12	72	10.83
		FV-404P	3/4"	1/4" x 20"	6	36	16.56
Straight Thread Male Inlet - Strt Thread Male Outlet							
		FV-303	1/2"	1/4" x 20"	12	72	12.72
		FV-404	3/4"	1/4" x 20"	6	48	18.95
Straight Thread Female Inlet - Plain Outlet							
		FV-505	1"	5/16" x 18"	4	24	24.70
		FV-606	1-1/4"	3/8" x 16"	2	16	44.64
		FV-707	1-1/2"	3/8" x 16"	2	12	46.46
		FV-808	2"	3/8" x 16"	2	12	49.71

		FR	FLOAT ROD - BRASS				
				Rod Size			
		FR12-1	12"	1/4" x 20"	5	500	1.31
		FR12-15	12"	5/16" x 18"	5	500	1.31
		FR12-2	12"	3/8" x 16"	5	500	1.31
FR12-1							

		EFV	EVAPORATER COOLER FLOAT VALVE				
		EFV-01	1/4"		20	100	7.11
EFV-01							

	MATCO-NORCA MODEL #	SIZE	INNER CARTON QUANTITY	MASTER CARTON QUANTITY	LIST PRICE
MISC MISCELLANEOUS PRODUCTS					
	HYD-250	Fire Hydrant Adapter 2-1/2" FNST x 3/4" Hose	1	60	16.08
	PG-100	1/4" NPT Lower, 2" Diameter, Dry, 100 PSI Pressure Gauge	1	24	5.22

	CIBW	NO-HUB CAST IRON BACKWATER VALVE			
	CIBW10	3"	1	10	55.24
	CIBW11	4"	1	10	80.78

	CISS	CAST IRON ROUND SLOP SINK			W/STRAINER
	CISS12	2" Outlet x 12" Round	1	24	23.67

	CIFF	CAST IRON FLOOR FLANGES			
Black					
	CIFFB02	3/8"	18	180	1.33
	CIFFB03	1/2"	18	180	1.39
	CIFFB04	3/4"	20	140	1.50
	CIFFB05	1"	20	120	2.58
	CIFFB06	1-1/4"	10	80	2.96
	CIFFB07	1-1/2"	5	50	3.26
	CIFFB08	2"	8	40	5.77
Galvanized					
	CIFFG02	3/8"	18	180	1.70
	CIFFG03	1/2"	18	180	1.78
	CIFFG04	3/4"	20	140	1.92
	CIFFG05	1"	20	120	3.22
	CIFFG06	1-1/4"	10	80	3.87
	CIFFG07	1-1/2"	5	50	4.18
	CIFFG08	2"	8	40	7.24

MATCO-NORCA A Major Supplier of

Malleable Pipe Fittings - Two Separate Lines:

Thailand Fittings - 150 lb. ISO-9002

- ❖ Considered the best foreign fittings.
- ❖ Stocked from 1/8" - 6" diameters.
- ❖ 100% Pressure Tested.



China Fittings - ISO-9002

- ❖ A more economical line.
- ❖ Considered the best from China.
- ❖ 100% Pressure Tested.
- ❖ Available with Bar Codes.



Thailand Fittings - 300 lb. ISO-9002

- ❖ For Water, Oil, Steam and Gases.
- ❖ Meets or Exceeds All Applicable ASTM & ASME Standards.
- ❖ 1/4" through 4".



Cast Iron Fittings - 150 lb.

- ❖ UL Listed.
- ❖ Meets ANSI B16.4.
- ❖ 1/2" through 4".



Brass Pipe Fittings - ISO-9002

- ❖ Heavy Pattern B62 Bronze Thailand Fittings.
- ❖ Stocked from 1/8" - 4" diameter.
- ❖ Meets all ANSI standards.



Forged Steel Fittings

- ❖ Stocked in Class 2000, 3000 and 6000.
- ❖ Conforms With ASTM A105N.
- ❖ Material Test Reports (MTR's) Available.



Fittings, Nipples & Merchant Couplings

Steel Nipples: ISO-9002

- ❖ Meets or exceeds all applicable ASTM and ANSI standards.
- ❖ Stocked from 1/8" - 6" diameters.
- ❖ Available in long lengths up to 10 ft.
- ❖ Various assortments including slant 66 packs, in stock.
- ❖ T.O.E. nipples stocked or available.



Brass Nipples: ISO-9002

- ❖ Meets or exceeds all applicable ASTM and ANSI standards.
- ❖ Stocked from 1/8" - 4" diameters.
- ❖ Available in long lengths up to 24".
- ❖ T.O.E. nipples stocked or available.



Steel Merchant and API Line Couplings: ISO-9002

- ❖ Meets or exceeds all applicable ASTM, ANSI and API standards.
- ❖ Merchant Couplings stocked from 1/8" - 6" Diameters.
- ❖ API Line Couplings stocked from 1/8" - 12" diameters.
- ❖ Full stock of specialty couplings, such as Half Couplings and Right and Left Couplings.



Steel Plugs and Bushings:

- ❖ Meets or exceeds all applicable ASTM and ANSI standards
- ❖ Stocked from 1/8" through 2" diameters
- ❖ Full stock of specialty items including hex and square socket plugs, hex head plugs, etc.



TERMS & CONDITIONS OF SALE

ACCEPTANCE

Orders, whether verbal or written, are subject to acceptance by Matco-Norca, Inc. Hereinafter referred to as the seller at its Brewster, N.Y. office. No terms or conditions of buyers order contrary to seller's terms and conditions shall be binding upon seller unless specifically agreed upon by seller in writing. Sellers acceptance of orders shall occur by written acknowledgement or tender of delivery of goods and or services the subject hereof (goods), which ever occurs first.

PRICES AND SALES POLICY

Until written confirmation of this contract has been received by buyer, all prices are subject to change without prior notice. We reserve the right to adjust orders to standard package quantities unless otherwise stated on buyers purchase order. We reserve the right to make product improvement without notice. If seller determines buyer's credit is unsatisfactory or there is reasonable doubt concerning buyer's ability to pay, payment in advance may be required or buyer shall provide security for such payment in an amount and form acceptable to seller. Unless otherwise specified by seller, terms are 2% 10 days/net 30 days.

Cash discounts apply to the value of goods at the net invoiced value before transportation charges, taxes and additional duties. Unearned cash discounts will be charged back as an unpaid balance to the buyers account. Any past due amount is subject to a finance charge of 1-1/2% per month (18% per year) on the total past due balance in accordance with the Truth-in-lending Act in Title 1 of the Federal Consumer Protection Act effective July 1,1969.

TAXES

All prices are exclusive of taxes and excises. Sales, use and other taxes, by whomsoever levied, are to be paid by the buyer and unless invoiced, are to be paid by buyer direct to the appropriate governmental agency. Buyers are required to furnish seller with a copy of their tax exemption of resale certificate, otherwise applicable state sales taxes will be charged.

DELIVERY AND SHIPMENT OF MATERIALS

All goods are sold F.O.B. sellers warehouse. Delivery of material to a common carrier shall constitute delivery thereof to buyer and risk of loss shall pass to buyer at such time. Claims for damage to or loss of material in transit shall be filed by buyer direct with carrier. Buyer assumes all risks and liability for the results obtained by the use of material delivered hereunder. No claim of any kind, whether as to material delivered or for nondelivery or late delivery of material and whether based on negligence or otherwise, shall be greater in amount than the purchase price of the material in respect to which such claim is made. In no event shall seller be liable for indirect or consequential damages or for anticipated profits or loss of use of equipment.

RETURNS AND CANCELLATIONS

Permission in writing and return authorization must be obtained from seller before any goods are returned. All returns must be prepaid, no collect shipments will be accepted. All returns made for reasons other than defects are subject to a restocking charge. Discontinued goods are not returnable.

Cancellation of orders may be made only with the sellers written consent and shall be subject to cancellation charges.

GOVERNING LAW

The entering into, construction, interpretation, performance and discharge of the terms set forth herewith shall be governed in accordance with the laws of the State of New York.

LIMITED ONE YEAR WARRANTY

Seller warrants the material to be free of defects in material and workmanship, under normal use, proper maintenance and proper operation, for a period of one year from date of delivery to a common carrier for shipment to buyer or his designated agent. The obligation of the seller is limited to (1) repair of the material, or (2) replacement of any component or components proven defective in material or workmanship, or(3) refund of the purchase price. Seller shall have no liability for the cost of removal or reinstallation with respect to any replaced or repaired product. The election of said remedies shall be determined by seller in its sole discretion and shall be considered final disposition.

All implied warranties, including the implied warranties of merchantability and fitness for a particular purpose, are hereby disclaimed and excluded. This warranty is in lieu of all other warranties, guarantees, agreements and similar obligations or seller, in no event shall seller be liable for consequential or incidental damages.

CLAIMS

No later than ten (10) days from receipt of material buyer will report, in writing, all claims for any damage, defects or shortages. All claims, including for alleged damaged or defective material, shortage negligence or any other cause whatsoever "(defective performance)", shall deemed waived unless made in writing within the ten (10) day period. However, any defective performance not discoverable within said ten (10) day period (including that discoverable only in processing or in further manufacturing) shall be deemed waived unless made in writing and received by seller in writing within ninety (90) days after receipt or within ten (10) days after buyer learns of the alleged defect, whichever occurs first. Seller's liability shall in no event exceed the purchase price of the material in respect to which the claim is made, or at the election of seller at its sole discretion, and to repair or replacement of such material. Seller shall not be liable for, and buyer assumes all responsibility for, all personal injury and property damage resulting from handling, possession, use or resale of the material by buyer. In no event shall seller be liable for incidental or consequential damages, whether buyer's claim is in contract, negligence, or otherwise. If claim is made, buyer shall permit seller at seller's option to reinspect the material at buyer's plant or if seller so directs, buyer shall return the material at buyer's expense to seller's facility for reinspection. No material may be returned to seller without prior written permission from seller.

FORCE MAJEURE

Anything in this agreement to the contrary notwithstanding, it is expressly agreed that seller shall not be liable for any damages resulting from, and buyer shall not have the right to cancel this order because of any delays caused in whole or in part by fires, floods, windstorms, tornadoes, wars, riots, insurrections, strikes, lockouts sit-downs, slow-downs, or other labor trouble, causing cessation or interruption of operation or by accident, material shortages, labor or fuel shortages, or inability to procure labor or materials, either on the part of the seller, or because any plant, plants or any portion thereof belonging to seller have been commandeered by the legally constituted public authority, or because of any priorities or preferences established for the manufacture, assembly or allotment of materials by order, decree, or to otherwise of the United States, or by any department, bureau, commission, committee, agent or administrator of any legally constituted public authority in any plant of seller, or any of its suppliers, or resulting from any other cause beyond the control of seller.