

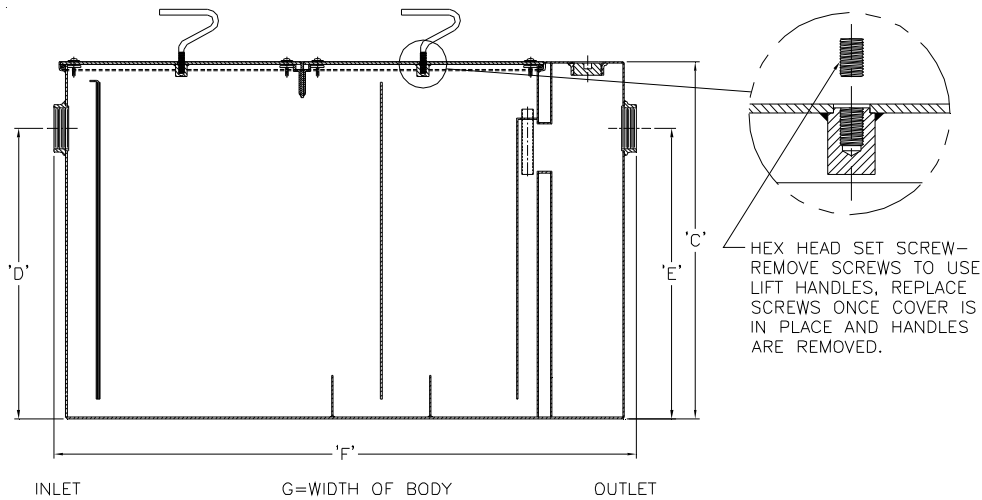


**Z1172**  
**LARGE CAPACITY GREASE INTERCEPTOR**

**SPECIFICATION SHEET**

**TAG** \_\_\_\_\_

Dimensional Data (inches and [mm]) are Subject to Manufacturing Tolerances and Change Without Notice



Size	Inlet/Outlet Size	Flow Rate G.P.M. [L.P.M.]	Capacity		No. of Covers	Approx. Wt. Lbs. [kg]	Dimensions in Inches [mm]			
			Water Gal. [L]	Grease Lbs. [kg]			C	D/E	F	G
900	3 [76]	75 [284]	65 [246]	150 [68]	1	316 [143]	22-3/4 [578]	18-1/2 [470]	36 [914]	28-5/8 [727]
1000		100 [378]	110 [416]	200 [91]		408 [185]	27 [686]	23 [584]	42-3/4 [1086]	33-5/8 [854]
1100		125 [472]	150 [567]	250 [114]		749 [340]	30-1/8 [765]	24-1/2 [622]	49-1/4 [1251]	40 [1016]
1200	4 [102]	150 [567]	195 [737]	300 [136]	2	856 [389]	30-3/4 [781]	25-1/4 [641]	56 [1422]	41-5/8 [1057]
1300		200 [756]	270 [1021]	400 [182]		1016 [461]	35-1/2 [902]	29-7/8 [759]	61 [1549]	43-5/8 [1108]
1400	5 [127]	250 [945]	465 [1758]	500 [227]	2	1384 [628]	41 [1041]	36 [914]	71 [1803]	51-5/8 [1311]
1500		300 [1134]	665 [2514]	600 [272]		1770 [804]	46-1/4 [1175]	39-5/8 [1006]	80 [2032]	58-5/8 [1489]
1600	6 [152]	350 [1323]	865 [3278]	700 [318]	3	2096 [951]	50-1/2 [1283]	43-7/8 [1114]	87 [2210]	63-5/8 [1616]
1700		400 [1512]	1095 [4139]	800 [363]		2440 [1108]	54-1/4 [1378]	47-5/8 [1210]	94 [2388]	67 [1702]
1800		450 [1701]	1280 [4838]	900 [409]		2710 [1230]	55-1/4 [1403]	48-5/8 [1235]	100 [2540]	72 [1829]
1900		500 [1890]	1440 [5443]	1000 [454]		2857 [1297]	57-1/4 [1454]	51-5/8 [1311]	104 [2642]	74 [1880]

**ENGINEERING SPECIFICATION:** ZURN Z1172 Large capacity Acid Resistant Coated interior and exterior fabricated steel grease interceptor, rated at \_\_\_\_ GPM and \_\_\_\_ Lbs. grease capacity, with internal air relief by-pass, bronze cleanout plug (which can be used as a sampling port) and visible double wall trap seal with removable pressure equalizing/flow diffusing baffle. Gasketed non-skid secured cover with removable lift handles, complete with flow control fitting. Regularly furnished with inlet and outlet in high position.

**OPTIONS** (Check/specify appropriate options)

**PREFIXES**

- \_\_\_ Z Acid Resistant Coated Fabricated Steel\*
- \_\_\_ ZS All Type 304 Fabricated Stainless Steel

**SUFFIXES**

- \_\_\_ -AL Aluminum Cover
- \_\_\_ -E Acid Resistant Coated Interior and exterior fabricated steel extension section. (Specify 'C' Dim. required) for recessed installation.
- \_\_\_ -ER Acid resistant coated interior and exterior fabricated retro fit steel extension section (Specify extension height required), with PVC cleanout extension kit.
- \_\_\_ -HD Heavy duty traffic cover rated at 10,000 lbs. [4536 kg] maximum safe live load. An increase 'C' dim. is required when -HD option is specified. (See -HD option specification sheet)
- \_\_\_ -K Anchor flange 1-3/4 [44] down from top and 2 [51] wide. (A 3 [76] minimum Extension Height is required when Anchor Flange (-K) Option is specified.)
- \_\_\_ -KC Anchor flange 1-3/4 [44] down from top and 2 [51] wide with clamp collar. (A 3 [76] minimum Extension Height is required when Anchor Flange (-KC) Option is specified.)
- \_\_\_ -L Angle type (Z1108-L) flow control device.
- \_\_\_ -PW Plug Wrench
- \_\_\_ -RE Recessing receiver enclosed type for recessed installation. Furnished with gasketed non-skid cover with removable lift handles. (Sizes 900 & 1000 Only)

\* Regularly furnished unless otherwise specified.