

If you have questions or comments, contact us.
Pour toute question ou tout commentaire, nous contacter.
Si tiene dudas o comentarios, contactenos.

1-800-4-DEWALT • www.dewalt.com

INSTRUCTION MANUAL
GUIDE D'UTILISATION
MANUAL DE INSTRUCCIONES

INSTRUCTIVO DE OPERACIÓN, CENTROS DE SERVICIO Y PÓLIZA DE
GARANTÍA. ADVERTENCIA: LEÁSE ESTE INSTRUCTIVO ANTES DE
USAR EL PRODUCTO.

DEWALT®

DWH050
Drilling Dust Extraction System
Système de dépolluissage pour le perçage
Sistema de extracción de polvo de taladrado

DEWALT Industrial Tool Co., 701 East Joppa Road, Baltimore, MD 21286
(MAY11) Part No. N111555 DWH050 Copyright © 2011 DEWALT

The following are trademarks for one or more DEWALT power tools: the yellow and black color scheme; the "D" shaped air intake grill; the array of pyramids on the handgrip; the kit box configuration; and the array of lozenge-shaped humps on the surface of the tool.

Definitions: Safety Guidelines

The definitions below describe the level of severity for each signal word. Please read the manual and pay attention to these symbols.

⚠ DANGER: Indicates an imminently hazardous situation which, if not avoided, **will** result in **death or serious injury**.

⚠ WARNING: Indicates a potentially hazardous situation which, if not avoided, **could** result in **death or serious injury**.

⚠ CAUTION: Indicates a potentially hazardous situation which, if not avoided, **may** result in **minor or moderate injury**.

NOTICE: indicates a practice **not related to personal injury** which, if not avoided, **may** result in **property damage**.

IF YOU HAVE ANY QUESTIONS OR COMMENTS ABOUT THIS OR ANY DEWALT TOOL, CALL US TOLL FREE AT: **1-800-4-DEWALT (1-800-433-9258)**



WARNING: To reduce the risk of injury, read all of this manual carefully before operating the attachment. Also refer to the manual of any power tool that will be used with this attachment.

General Safety Warnings



WARNING! Read all safety warnings and all instructions. Failure to follow the warnings and instructions may result in electric shock, fire and/or serious injury.

SAVE ALL WARNINGS AND INSTRUCTIONS FOR FUTURE REFERENCE

1) WORK AREA SAFETY

- Keep work area clean and well lit.** Cluttered or dark areas invite accidents.
- Keep children and bystanders away while operating a power tool.** Distractions can cause you to lose control.
- Ensure the workplace is well ventilated.** Exposure to dust at a poorly ventilated workplace may result in damage to the health.

2) ELECTRICAL SAFETY

- Avoid body contact with earthed or grounded surfaces such as pipes, radiators, ranges and refrigerators.** There is an increased risk of electric shock if your body is earthed or grounded.

3) PERSONAL SAFETY

- Stay alert, watch what you are doing and use common sense when operating a power tool. Do not use a power tool while you are tired or under the influence of drugs, alcohol or medication.** A moment of inattention while operating power tools may result in serious personal injury.
- Use personal protective equipment. Always wear eye protection.** Protective equipment such as dust mask, non-skid safety shoes, hard hat, or hearing protection used for appropriate conditions will reduce personal injuries.
- Do not overreach. Keep proper footing and balance at all times.** This enables better control of the power tool in unexpected situations.
- Dress properly. Do not wear loose clothing or jewelry. Keep your hair, clothing and gloves away from moving parts.** Loose clothes, jewelry or long hair can be caught in moving parts.

4) POWER TOOL USE AND CARE

- Do not force the power tool. Use the correct power tool for your application.** The correct power tool will do the job better and safer at the rate for which it was designed.
WARNING: The use of any accessory or attachment or performance of any operation with this tool, other than those recommended in this instruction manual may present a risk of personal injury.

- Store idle power tools out of the reach of children and do not allow persons unfamiliar with the power tool or these instructions to operate the power tool.** Power tools are dangerous in the hands of untrained users.
- Use the power tool, accessories and tool bits etc., in accordance with these instructions taking into account the working conditions and the work to be performed.** Use of the power tool for operations different from those intended could result in a hazardous situation.

5) SERVICE

- Have your power tool serviced by a qualified repair person using only identical replacement parts.** This will ensure that the safety of the power tool is maintained.

Additional Specific Safety Rules for Dust Extraction Systems

- Do not use the attachment for drilling applications in wood, steel or plastic.
- Do not use the attachment in core drilling applications.
- Do not use the attachment for chiselling applications.
- Use only power tools recommended by DEWALT with this attachment. For more information about DEWALT power tools compatible with this attachment, please contact your local dealer, call 1-800-4-DEWALT (1-800-433-9258) or visit our website www.dewalt.com.
- Do not use the tool in damp or wet conditions.
- Do not allow to be used as a toy. Close attention is necessary when used by or near children.
- Use only as described in this manual. Use only manufacturer's recommended attachments.
- Do not put any object into openings. Do not use with any opening blocked; keep free of lint, hair and anything that may reduce air flow.
- Keep hair, loose clothing, fingers and all parts of body away from openings and moving parts.
- Do not use to pick up flammable or combustible liquids, such as gasoline, or use in areas where they may be present.
- This appliance collects a significant percentage of, but not all, the dust generated.

WARNING: ALWAYS USE SAFETY GLASSES. Everyday eyeglasses are NOT safety glasses. Also use face or dust mask if cutting operation is dusty. ALWAYS wear certified safety equipment:

- ANSI Z87.1 eye protection (CAN/CSA Z94.3).
- ANSI S12.6 (S3.19) hearing protection.
- NIOSH/OSHA respiratory protection.

WARNING: Some dust created by power sanding, sawing, grinding, drilling, and other construction activities contains chemicals known to the State of California to cause cancer, birth defects or other reproductive harm. Some examples of these chemicals are:

- lead from lead-based paints,
- crystalline silica from bricks and cement and other masonry products, and
- arsenic and chromium from chemically-treated lumber.

Your risk from these exposures varies, depending on how often you do this type of work. To reduce your exposure to these chemicals: work in a well ventilated area, and work with approved safety equipment, such as those dust masks that are specially designed to filter out microscopic particles.

Avoid prolonged contact with dust from power sanding, sawing, grinding, drilling, and other construction activities. Wear protective clothing and wash exposed areas with soap and water. Allowing dust to get into your mouth, eyes, or lay on the skin may promote absorption of harmful chemicals.

WARNING: Use of this tool can generate and/or disburse dust, which may cause serious and permanent respiratory or other injury. Always use NIOSH/OSHA approved respiratory protection appropriate for the dust exposure. Direct particles away from face and body.

WARNING: Before beginning the work, check to determine the hazard classification of the dust produced. Use an industrial dust extractor vacuum of the appropriate official approved safety class and in compliance with your local dust hazard control regulations.

WARNING: Always wear proper personal hearing protection. Under some conditions and duration of use, noise from this product may contribute to hearing loss.

COMPONENTS (FIG. 1)

WARNING: Never modify the power tool or any part of it. Damage or personal injury could result.

- | | |
|--|--|
| A. Hole cleaning nozzle
[0.32"–0.56" (8–14 mm)] | F. Drilling head release button |
| B. Hole cleaning nozzle
[0.56" (14 mm) and above] | G. Drilling head
[fits drill bit diameters 0–1.47" (0–38 mm)] |
| C. Connection point | H. Drilling head
[fits drill bit diameters 1.47–2.05" (38–52 mm)] |
| D. Dust extraction system | I. Suction pad |
| E. Quick release buttons | |

INTENDED USE

Your drilling dust extraction system has been designed for professional drilling applications in concrete and masonry. Using the appropriate hammer drill, drill bit and dust extractor vacuum it can be used to remove the vast majority of static and airborne dust which without the use of the dust extraction system could otherwise contaminate the working environment or pose an increased health risk to the operator and those in close proximity.

Recommended power tools to be used with this attachment are available at extra cost from your local dealer or authorized service center. If you need assistance in locating any power tool, please contact DEWALT Industrial Tool Co., 701 East Joppa Road, Baltimore, MD 21286, call 1-800-4-DEWALT (1-800-433-9258) or visit our website www.dewalt.com.

DO NOT use under wet conditions or in presence of flammable liquids or gases.

The drilling dust extraction system is a professional power tool.

DO NOT let children come into contact with the tool. Supervision is required when inexperienced operators use this tool.

ASSEMBLY

WARNING: ALWAYS turn off tool and disconnect the tool from the power source before making any adjustments or removing or installing attachments or accessories. This applies to both the drill and the dust extractor vacuum. Such preventative safety measures reduce the risk of starting the tool accidentally.

Attach Drilling Head to Dust Extraction System (Fig. 1, 2)

- Select drilling head (G, H) to be used.
- Slide drilling head (G, H) into dust extraction system (D) until it locks into place.

Remove Drilling Head from Dust Extraction System (Fig. 1, 2)

Depress drilling head release button (F) to remove drilling head (G, H) from dust extraction system (D).

Attach Dust Extraction System to Dust Extractor Vacuum (Fig. 1, 4, 5)

WARNING: Use only power tools recommended by DEWALT with this attachment. For more information about DEWALT power tools compatible with this attachment, please contact your local dealer, call 1-800-4-DEWALT (1-800-433-9258) or visit our website www.dewalt.com.

Push dust extractor vacuum hose nozzle (K) into connection point (C) until tight. For a more secure connection use the AirLock connection system.

NOTE: Ensure hose connection is secure.

AIRLOCK CONNECTOR SYSTEM - DWV9000 (SOLD SEPARATELY)

AirLock allows for a fast, secure connection between the drilling dust extraction system and the dust extractor vacuum.

- Ensure the collar (L) on the AirLock connector (M) is in the unlock position. Align notches (R) on collar and AirLock connector as shown for unlock and lock positions.
- Push the AirLock connector (M) onto the connection point (C).
- Rotate the collar (L) to the locked position.

NOTE: The ball bearings (N) inside collar will lock into slot (O) and secure the connection. The drilling dust extraction system is now securely connected to the dust extractor vacuum.

Attach Drilling Dust Extraction System to Vertical or Horizontal Surface (Fig. 1, 3, 8, 9)

The dust extraction system (D) has a suction system that allows the unit to be fixed into place on a vertical or horizontal surface.

1. With the correct drilling head (G, H) fitted and the drilling dust extraction system securely connected to the dust extractor vacuum, turn the dust extractor vacuum on as instructed in the dust extractor vacuum instruction manual.
2. Depress and hold the quick release buttons (E) and place the dust extraction system (D) on surface to be drilled.

NOTE: The suction system will not hold the unit in place on very rough or uneven surfaces. Secure the dust extraction system in place as shown in figure 9 if drilling on an uneven horizontal surface.

3. Release the quick release buttons (E) and the dust extraction system will be secured in place.
4. To make fine location adjustments, depress the quick release buttons (E) and the seal will release so the unit can be moved or removed from the surface completely.

⚠WARNING: To reduce the risk of injury, DO NOT turn off the dust extractor vacuum before removing the drilling dust extraction system from the surface as instructed. Turning off the dust extractor vacuum before removing the drilling dust extraction system from the surface will cause the drilling dust extraction system to fall from the surface possibly causing injury.

Remove Drilling Dust Extraction System From Surface (Fig. 1, 3)

⚠WARNING: To reduce the risk of injury, DO NOT turn off the dust extractor vacuum before removing the drilling dust extraction system from the surface as instructed. Turning off the dust extractor vacuum before removing the drilling dust extraction system from the surface will cause the drilling dust extraction system to fall from the surface possibly causing injury.

Depress the quick release buttons (E) on the dust extraction system to remove it from the surface.

Attach Hole Cleaning Nozzles (Fig. 1, 6, 7)

Hole cleaning is required to expose the full drilled depth and when using certain types of chemical fixing anchors to ensure maximum adhesion.

1. Select the correct hole cleaning nozzle to be used:
 - Hole cleaning nozzle (A): used for small holes 0.32"–0.56" (8–14 mm) in diameter.
 - Hole cleaning nozzle (B) used for holes 0.56" (14 mm) in diameter and above.
2. Remove/replace hole cleaning nozzle:
 - Grip the nozzle (A, B) firmly and pull it from the connection point (J).
 - Push the nozzle into the connection point (J) until it stops.
3. Push the dust extractor vacuum hose nozzle (K) into the connection point (C) until tight. For a more secure connection the AirLock connection system may be used.

NOTE: Ensure hose connection is secure.

OPERATION

⚠WARNING: ALWAYS turn off tool and disconnect the tool from the power source before making any adjustments or removing or installing attachments or accessories. This applies to both the drill and the dust extractor vacuum. Such preventative safety measures reduce the risk of starting the tool accidentally.

⚠WARNING: For your own safety, read the tool instruction manual before using any accessory. Failure to heed these warnings may result in personal injury and serious damage to the tool and the accessory. When servicing this tool, use only identical replacement parts.

NOTE: The amount of dust retained by the dust extractor vacuum is dependent on its filter system. Refer to the dust extractor vacuum instruction manual for more information.

Drilling (Fig. 1, 8, 9)

1. Complete the **Attach Drilling Dust Extraction System to Vertical or Horizontal Surface** procedure. The unit is now ready to use.
2. Place the drill bit into the center of the drilling head (G, H) and proceed to drill as shown.

Hole Cleaning (Fig. 10)

1. Complete the **Attach Hole Cleaning Nozzles** procedure.
 2. Turn the dust extractor vacuum on as instructed in the dust extractor vacuum instruction manual.
- NOTE:** Ensure hose connection is secure.
3. Place the hole cleaning nozzle (A, B) into hole to be cleaned.

MAINTENANCE

⚠WARNING: ALWAYS turn off tool and disconnect the tool from the power source before making any adjustments or removing or installing attachments or accessories. This applies to both the drill and the dust extractor vacuum. Such preventative safety measures reduce the risk of starting the tool accidentally.

Your drilling dust extraction system has been designed to operate over a long period of time with a minimum of maintenance. Continuous satisfactory operation depends on proper tool care and regular cleaning.

TO REPLACE THE SUCTION PAD (FIG. 1)

1. Disconnect dust extraction system from dust extractor vacuum.
 2. From the underside of unit remove the four screws (S) to release the suction pad (I).
 3. Replacement is a reversal of the above.
- New suction pads are available from any DEWALT authorized repair agent.

TROUBLESHOOTING

FAULT	POSSIBLE CAUSE	REMEDY
Excessive dust emission	dust extractor vacuum is full	empty the dust extractor vacuum
	filter of dust extractor vacuum is blocked	clean or replace the filter
	suction channel is blocked	clean the suction channel
Dust extraction system does not attach to surface	the wrong drill head is selected	select the correct drill head
	dust extractor vacuum is full	empty the dust extractor vacuum
	filter of dust extractor vacuum is blocked	clean or replace the filter
	suction channel is blocked	clean the suction channel
	suction pad is damaged	replace the suction pad

Cleaning

⚠WARNING: Never use solvents or other harsh chemicals for cleaning the non-metallic parts of the tool. These chemicals may weaken the plastic materials used in these parts. Use a cloth dampened only with water and mild soap. Never let any liquid get inside the tool; never immerse any part of the tool into a liquid.

CLEAN DUST EXTRACTION ADAPTOR SUCTION CHANNEL (FIG. 1, 11)

1. Depress drilling head release button (F) and remove drilling head (G, H) from dust extraction system (D).
2. Use the hole cleaning nozzle (A) to remove dirt and dust from the suction channel (P).
3. Reassemble drilling head to dust extraction system.

CLEAN DRILLING HEAD (FIG. 1, 12)

1. Depress drilling head release button (F) and remove drilling head from dust extraction system.
2. Remove cover (Q) from drilling head (G, H) and use the hole cleaning nozzle (A) to remove dirt and dust.
3. Replace cover (Q) on drilling head and reassemble to dust extraction system (D).

Accessories

⚠WARNING: Since accessories, other than those offered by DEWALT, have not been tested with this product, use of such accessories with this tool could be hazardous. To reduce the risk of injury, only DEWALT recommended accessories should be used with this product.

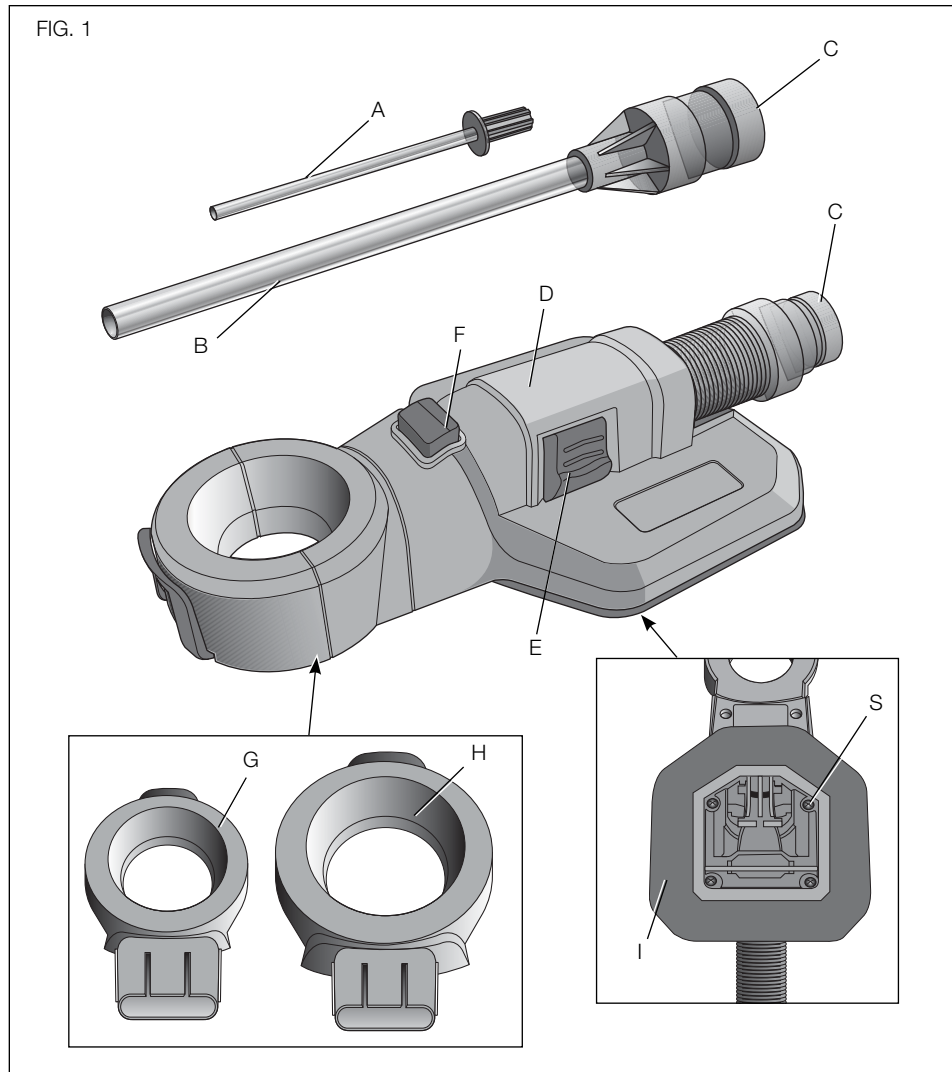


FIG. 2

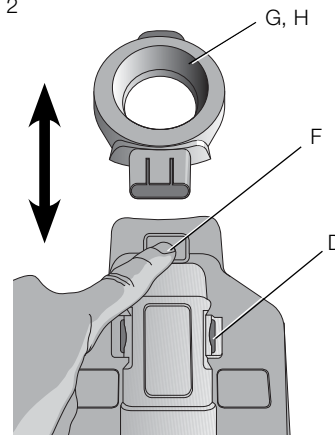


FIG. 3

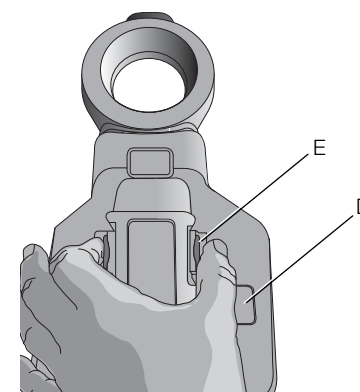


FIG. 4

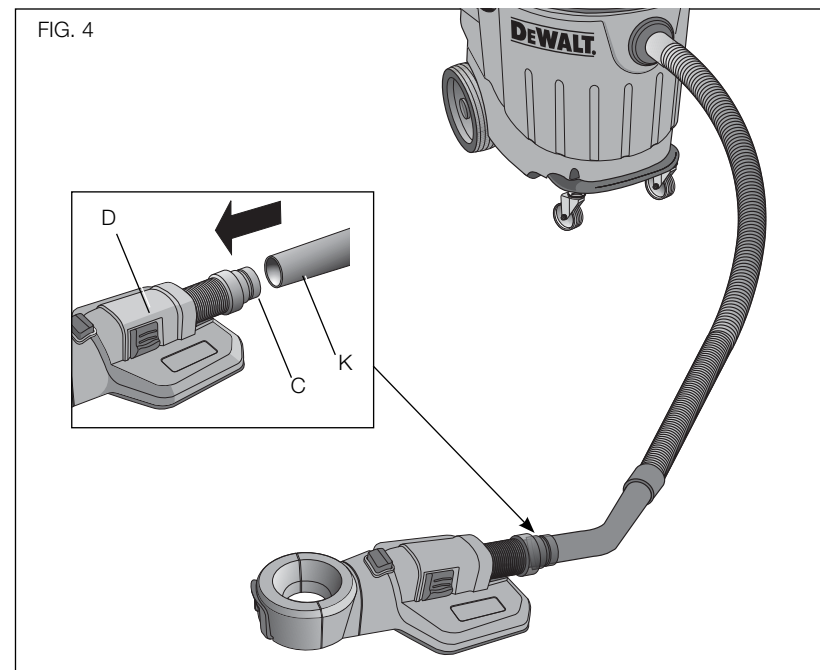


FIG. 5

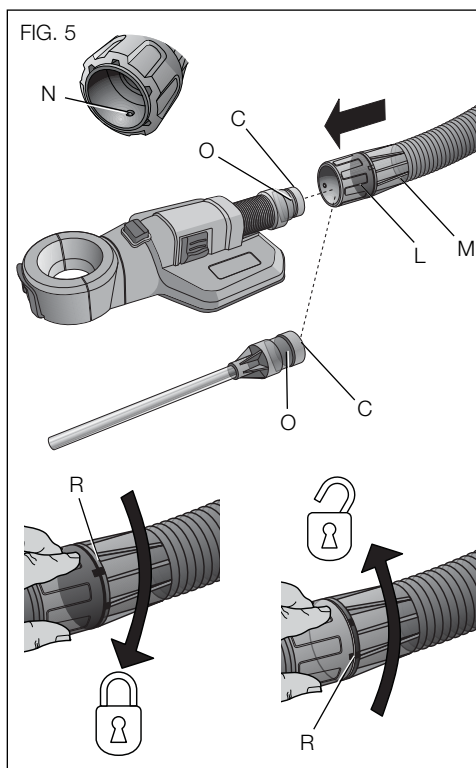
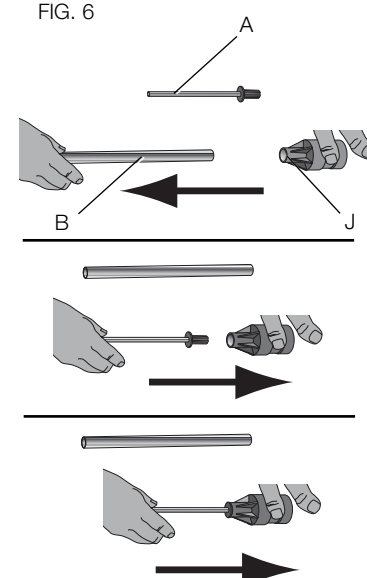
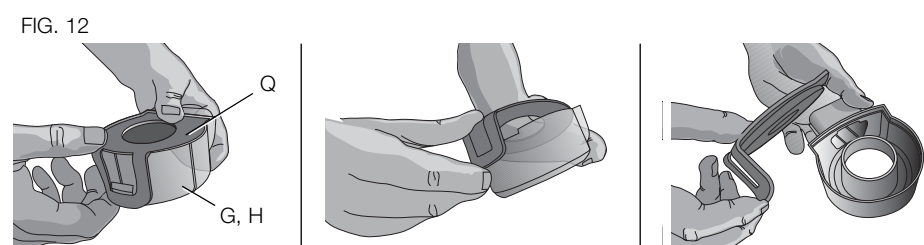
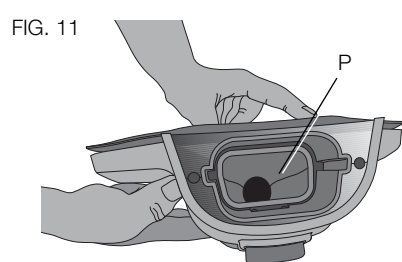
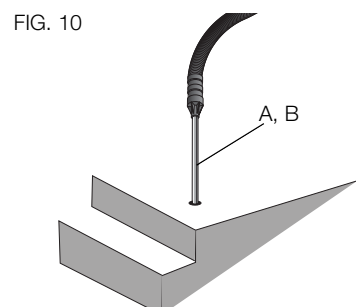
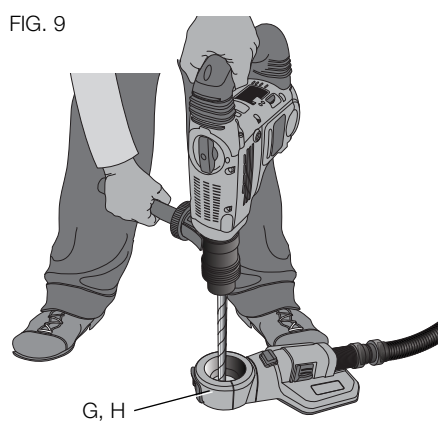
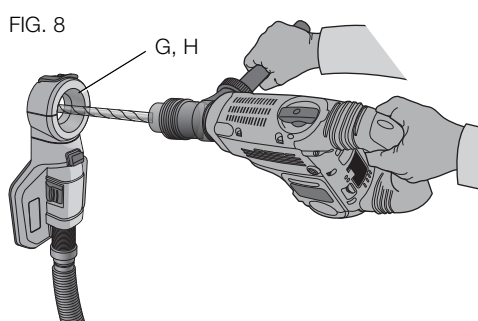
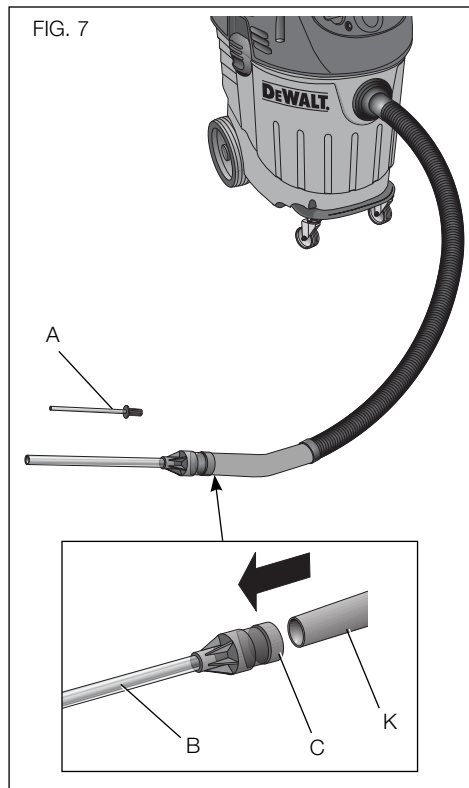


FIG. 6





If you need assistance, please contact DEWALT Industrial Tool Co., 701 East Joppa Road, Baltimore, MD 21286, call 1-800-4-DEWALT (1-800-433-9258) or visit our website www.dewalt.com.

Repairs

To assure product SAFETY and RELIABILITY, repairs, maintenance and adjustments should be performed by a DEWALT factory service center, a DEWALT authorized service center or other qualified service personnel. Always use identical replacement parts.

Three Year Limited Warranty

DEWALT will repair, without charge, any defects due to faulty materials or workmanship for three years from the date of purchase. This warranty does not cover part failure due to normal wear or tool abuse. For further detail of warranty coverage and warranty repair information, visit www.dewalt.com or call 1-800-4-DEWALT (1-800-433-9258). This warranty does not apply to accessories or damage caused where repairs have been made or attempted by others. This warranty gives you specific legal rights and you may have other rights which vary in certain states or provinces.

In addition to the warranty, DEWALT tools are covered by our:

1 YEAR FREE SERVICE

DEWALT will maintain the tool and replace worn parts caused by normal use, for free, any time during the first year after purchase.

90 DAY MONEY BACK GUARANTEE

If you are not completely satisfied with the performance of your DEWALT Power Tool, Laser, or Nailer for any reason, you can return it within 90 days from the date of purchase with a receipt for a full refund – no questions asked.

LATIN AMERICA: This warranty does not apply to products sold in Latin America. For products sold in Latin America, see country specific warranty information contained either in the packaging, call the local company or see website for warranty information.

FREE WARNING LABEL REPLACEMENT: If your warning labels become illegible or are missing, call 1-800-4-DEWALT (1-800-433-9258) for a free replacement.



Définitions : lignes directrices en matière de sécurité

Les définitions ci-dessous décrivent le niveau de danger pour chaque mot-indicateur employé. Lire le mode d'emploi et porter une attention particulière à ces symboles.

⚠ DANGER : indique une situation dangereuse imminente qui, si elle n'est pas évitée, entraînera la mort ou des blessures graves

⚠ AVERTISSEMENT : indique une situation potentiellement dangereuse qui, si elle n'est pas évitée, pourrait entraîner la mort ou des blessures graves

⚠ ATTENTION : indique une situation potentiellement dangereuse qui, si elle n'est pas évitée, pourrait entraîner des blessures légères ou modérées.

AVIS : indique une pratique ne posant aucun risque de dommages corporels mais qui par contre, si rien n'est fait pour l'éviter, pourrait poser des risques de dommages matériels.

POUR TOUTE QUESTION OU REMARQUE AU SUJET DE CET OUTIL OU DE TOUT AUTRE OUTIL DEWALT, COMPOSEZ LE NUMÉRO SANS FRAIS : 1-800-4-DEWALT (1-800-433-9258).



AVERTISSEMENT : pour réduire tout risque de dommages corporels, lire soigneusement ce manuel avant toute utilisation de l'accessoire. Se reporter aussi au manuel de l'utilisateur des outils électriques utilisés avec cet accessoire.

Consignes générales de sécurité



AVERTISSEMENT! Lire tous les avertissements de sécurité et toutes les directives. Le non-respect des avertissements et des directives pourrait se solder par un choc électrique, un incendie et/ou une blessure grave.

CONSERVER TOUS LES AVERTISSEMENTS ET TOUTES LES DIRECTIVES POUR UN USAGE ULTÉRIEUR

1) SÉCURITÉ DU LIEU DE TRAVAIL

- Tenir l'aire de travail propre et bien éclairée. Les lieux encombrés ou sombres sont propices aux accidents.
- Éloigner les enfants et les personnes à proximité pendant l'utilisation d'un outil électrique. Une distraction pourrait en faire perdre la maîtrise à l'utilisateur.
- S'assurer que les lieux de travail sont bien aérés. Toute exposition à la poussière sur des lieux de travail mal aérés pose des risques à la santé.

2) SÉCURITÉ EN MATIÈRE D'ÉLECTRICITÉ

- Éviter tout contact physique avec des surfaces mises à la terre comme des tuyaux, des radiateurs, des cuisinières et des réfrigérateurs. Le risque de choc électrique est plus élevé si votre corps est mis à la terre.

3) SÉCURITÉ PERSONNELLE

- Être vigilant, surveiller le travail effectué et faire preuve de jugement lorsqu'un outil électrique est utilisé. Ne pas utiliser d'outil électrique en cas de fatigue ou sous l'influence de drogues, d'alcool ou de médicaments. Un simple moment d'inattention en utilisant un outil électrique peut entraîner des blessures corporelles graves.
- Utiliser des équipements de protection individuelle. Toujours porter une protection oculaire. L'utilisation d'équipements de protection comme un masque antipoussière, des chaussures antidérapantes, un casque de sécurité ou des protecteurs auditifs lorsque la situation le requiert réduira les risques de blessures corporelles.
- Ne pas trop tendre les bras. Conserver son équilibre en tout temps. Cela permet de mieux maîtriser l'outil électrique dans les situations imprévues.
- S'habiller de manière appropriée. Ne pas porter de vêtements amples ni de bijoux. Garder les cheveux, les vêtements et les gants à l'écart des pièces mobiles. Les vêtements amples, les bijoux ou les cheveux longs risquent de rester coincés dans les pièces mobiles.

4) UTILISATION ET ENTRETIEN D'UN OUTIL ÉLECTRIQUE

- Ne pas forcer un outil électrique. Utiliser l'outil électrique approprié à l'application. L'outil électrique approprié effectuera un meilleur travail, de façon plus sûre et à la vitesse pour laquelle il a été conçu.

⚠ AVERTISSEMENT : l'utilisation de tout accessoire ou pièce, ou l'exécution de toute opération avec cet outil, autre que celle recommandée dans ce manuel de l'utilisateur pose des risques de dommages corporels.

- Ranger les outils électriques hors de la portée des enfants et ne permettre à aucune personne n'étant pas familière avec un outil électrique ou son mode d'emploi d'utiliser cet outil. Les outils électriques deviennent dangereux entre les mains d'utilisateurs inexpérimentés.
- Utiliser l'outil électrique, les accessoires, les forets, etc. conformément aux présentes directives en tenant compte des conditions de travail et du travail à effectuer. L'utilisation d'un outil électrique pour toute opération autre que celle pour laquelle il a été conçu est dangereuse.

RÉPARATION

- Faire réparer l'outil électrique par un réparateur professionnel en n'utilisant que des pièces de rechange identiques. Cela permettra de maintenir une utilisation sécuritaire de l'outil électrique.

Règles particulières additionnelles de sécurité propres aux systèmes de dépoussiérage

- Ne pas utiliser cet accessoire pour le perçage du bois, de l'acier ou du plastique.
- Ne pas utiliser cet accessoire pour le trépanage.
- Ne pas utiliser cet accessoire pour le ciselage.
- Utiliser exclusivement les outils électriques recommandés par DEWALT avec cet accessoire. Pour plus d'informations concernant les outils électriques DEWALT compatibles avec cet accessoire, contacter votre détaillant local, appeler le 1-800-4-DEWALT (1-800-433-9258) ou se rendre sur notre site www.dewalt.com.
- Ne pas utiliser l'outil dans un environnement humide ou détrempe.
- Ne jamais permettre qu'il soit utilisé comme un jouet. Rester très vigilant lorsque l'appareil est utilisé par des enfants ou en leur présence.
- N'utiliser l'appareil que comme décrit dans ce manuel. Utiliser exclusivement des accessoires recommandés par le fabricant.
- Ne pas insérer d'objet dans les ouvertures. Ne pas l'utiliser si les ouvertures sont bloquées. Le maintenir propre et exempt de tout cheveu, peluche, ou toute autre chose pouvant en réduire la circulation d'air.
- Maintenir les cheveux, les vêtements amples, les doigts, et toute autre partie du corps, éloignés des ouvertures et des pièces mobiles.
- Ne pas l'utiliser pour aspirer des liquides inflammables ou combustibles comme l'essence ou l'utiliser en leur présence.
- Cet appareil aspire un pourcentage considérable, mais pas la totalité de la poussière générée.

⚠ AVERTISSEMENT : PORTER SYSTÉMATIQUEMENT DES LUNETTES DE PROTECTION. Les lunettes courantes NE sont PAS des lunettes de protection. Utiliser aussi un masque antipoussières si la découpe doit en produire beaucoup. Porter SYSTÉMATIQUEMENT un équipement de sécurité homologué :

- Protection oculaire ANSI Z87.1 (CAN/CSA Z94.3);
- Protection auditive ANSI S12.6 (S3.19);
- Protection des voies respiratoires NIOSH/OSHA/MSHA.

⚠ AVERTISSEMENT : les scies, meules, ponceuses, perceuses ou autres outils de construction peuvent produire des poussières contenant des produits chimiques reconnus par l'État californien pour causer cancers, malformations congénitales ou être nocifs au système reproducteur. Parmi ces produits chimiques, on retrouve :

- Le plomb dans les peintures à base de plomb;
- La silice cristallisée dans les briques et le ciment, ou autres produits de maçonnerie; et
- L'arsenic et le chrome dans le bois ayant subi un traitement chimique.

Le risque associé à de telles expositions varie selon la fréquence à laquelle on effectue ces travaux. Pour réduire toute exposition à ces produits : travailler dans un endroit bien aéré, en utilisant du matériel de sécurité homologué tel un masque antipoussières spécialement conçu pour filtrer les particules microscopiques.

- Limitier toute exposition prolongée avec les poussières provenant du ponçage, sciage, meulage, perçage ou toute autre activité de construction. Porter des vêtements de protection et nettoyer à l'eau savonneuse les parties du corps exposées. Le fait de laisser la poussière pénétrer dans la bouche, les yeux ou la peau peut favoriser l'absorption de produits chimiques dangereux.

⚠ AVERTISSEMENT : cet outil peut produire et/ou répandre de la poussière susceptible de causer des dommages sérieux et permanents au système respiratoire. Utiliser systématiquement un appareil respiratoire antipoussières homologué par le NIOSH ou l'OSHA. Diriger les particules dans le sens opposé au visage et au corps.

⚠ AVERTISSEMENT : avant de se mettre au travail, s'assurer de déterminer la classification des dangers posés par les poussières produites. Utiliser un aspirateur industriel de la classe officielle de sécurité, appropriée et homologuée, conformément aux consignes locales de lutte contre les risques posés par les poussières.

⚠ AVERTISSEMENT : porter systématiquement une protection auditive individuelle appropriée. Sous certaines conditions et suivant la durée d'utilisation, le bruit émanant de ce produit pourrait contribuer à une perte de l'acuité auditive.