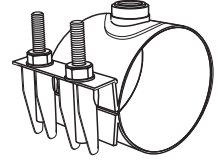
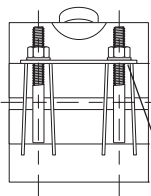


# SUBMITTAL INFORMATION

## Stainless Steel Saddle - Single Band - (FS313-xxx-TAP style)



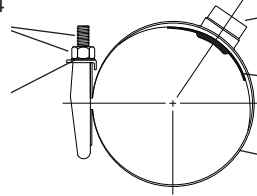
### TAPPED STAINLESS STEEL SADDLE



Stainless Steel Nuts and Studs - Type 304 stainless steel studs per ASTM A193 and A194. Heavy hex nuts are coated to prevent galling.

Washers - Type 304 stainless steel per ASTM A193 and A194

Lifter Bars - Type 304 stainless steel



Stainless Taps - Type 304 stainless steel TIG welded to shell. Available with AWWA, FIP or BSP threads 1/2" thru 2".

Gasket - NBR (Buna-N) rubber per ASTM D2000. Optional EPDM available.

Stainless Band - Type 304 stainless steel. Saddles are fully passivated to restore stainless steel characteristics.

NOM. PIPE SIZE	SADDLE O.D. RANGE (IN.)	TAP SIZE 1/2" - 1"				TAP SIZE 1-1/4" - 2"				CATALOG NUMBER
		BAND WIDTH	NO. OF BOLTS	BOLT SIZE	APPROX. WT. LBS.	BAND WIDTH	NO. OF BOLTS	BOLT SIZE	APPROX. WT. LBS.	
2"	2.13	4"	2	1/2"	1.7	N/A	N/A	N/A	N/A	FS313-213-TAP
	2.38									FS313-238-TAP
	2.50-2.70									FS313-270-TAP
2-1/2"	2.88	4"	2	1/2"	1.7	N/A	N/A	N/A	N/A	FS313-288-TAP
3"	3.00-3.13	4"	2	1/2"	2	N/A	N/A	N/A	N/A	FS313-313-TAP
	3.15-3.25									FS313-325-TAP
	3.46-3.70									* FS313-370-TAP
	3.50									**FS313-350-TAP
	3.80									FS313-380-TAP
	3.90-4.10					7-1/2"	2	1/2"	3.8	* FS313-410-TAP
4"	4.50-4.80	6"	2	1/2"	2.4	7-1/2"	2	1/2"	4.2	FS313-480-TAP
	4.80-5.20									FS313-520-TAP
5"	5.56	6"	2	5/8"	2.7	7-1/2"	2	5/8"	4.8	FS313-556-TAP
6"	6.00-6.40	6"	2	5/8"	2.9	7-1/2"	2	5/8"	5.1	FS313-640-TAP
	6.41-6.80									FS313-680-TAP
	6.63-6.90									FS313-690-TAP
	6.80-7.20									FS313-720-TAP
	7.45-7.85									FS313-785-TAP
8"	8.00-8.40	6"	2	5/8"	3.3	7-1/2"	2	5/8"	5.6	FS313-840-TAP
	8.40-8.80									FS313-880-TAP
	8.63-9.05									FS313-905-TAP
	9.00-9.40									FS313-940-TAP
10"	10.00-10.40	6"	2	5/8"	6.2	7-1/2"	2	5/8"	6.6	FS313-1040-TAP
	10.40-10.80									FS313-1080-TAP
	10.75-11.10									FS313-1110-TAP
	11.10-11.50									FS313-1150-TAP
12"	12.00-12.40	6"	2	5/8"	6.8	7-1/2"	2	5/8"	7.1	FS313-1240-TAP
	12.40-12.80									FS313-1280-TAP
	12.75-13.20									FS313-1320-TAP
	13.10-13.50									FS313-1350-TAP

\* CC7 tap not available for this size.

\*\* CC6, CC7 and IP7 not available for this size.

### OUTLET TAP CODE

CC (AWWA) THREAD			IP THREAD		
THREAD	Code No.	✓ SUBMITTED ITEM(S)	THREAD	Code No.	✓ SUBMITTED ITEM(S)
1/2" CC	CC1		1/2" IP	IP1	
3/4" CC	CC3		3/4" IP	IP3	
1" CC	CC4		1" IP	IP4	
1-1/4" CC	CC5		1-1/4" IP	IP5	
1-1/2" CC	CC6		1-1/2" IP	IP6	
2" CC	CC7		2" IP	IP7	

**To Order:** Select the catalog number for the desired pipe range and complete the catalog number by adding the outlet thread tap code.

Example: A single band saddle for 9.05 O.D. pipe with a 3/4" CC thread would be FS313-940-CC3.

### FEATURES

- All components are made of type 304 stainless steel
- All welds are fully passivated for corrosion resistance
- 2" -12" approved for use on HDPE. If Belleville washers are desired, use the prefix FSP313
- Saddles 4" and larger have coined body for gasket retention
- NBR (Buna-N) rubber pad gasket per ASTM D2000 with raised compression seal
- Rated for working pressure equal to the lesser of pipe pressure rating or 250 psi
- Certified to ANSI/NSF 61

The Ford Meter Box Company considers the information in this submittal form to be correct at the time of publication. Item and option availability, including specifications, are subject to change without notice. Please verify that your product information is current. Our standard warranty applies.



**The Ford Meter Box Company, Inc.**  
P.O. Box 443, Wabash, Indiana U.S.A. 46992-0443  
Phone: 260-563-3171 / Fax: 800-826-3487  
Overseas Fax: 260-563-0167  
www.fordmeterbox.com

09/18/20

Submitted by: