

ASI MODEL NO 20333 Automatic Deck Mount Soap Dispenser

Owners Manual & Installation Template

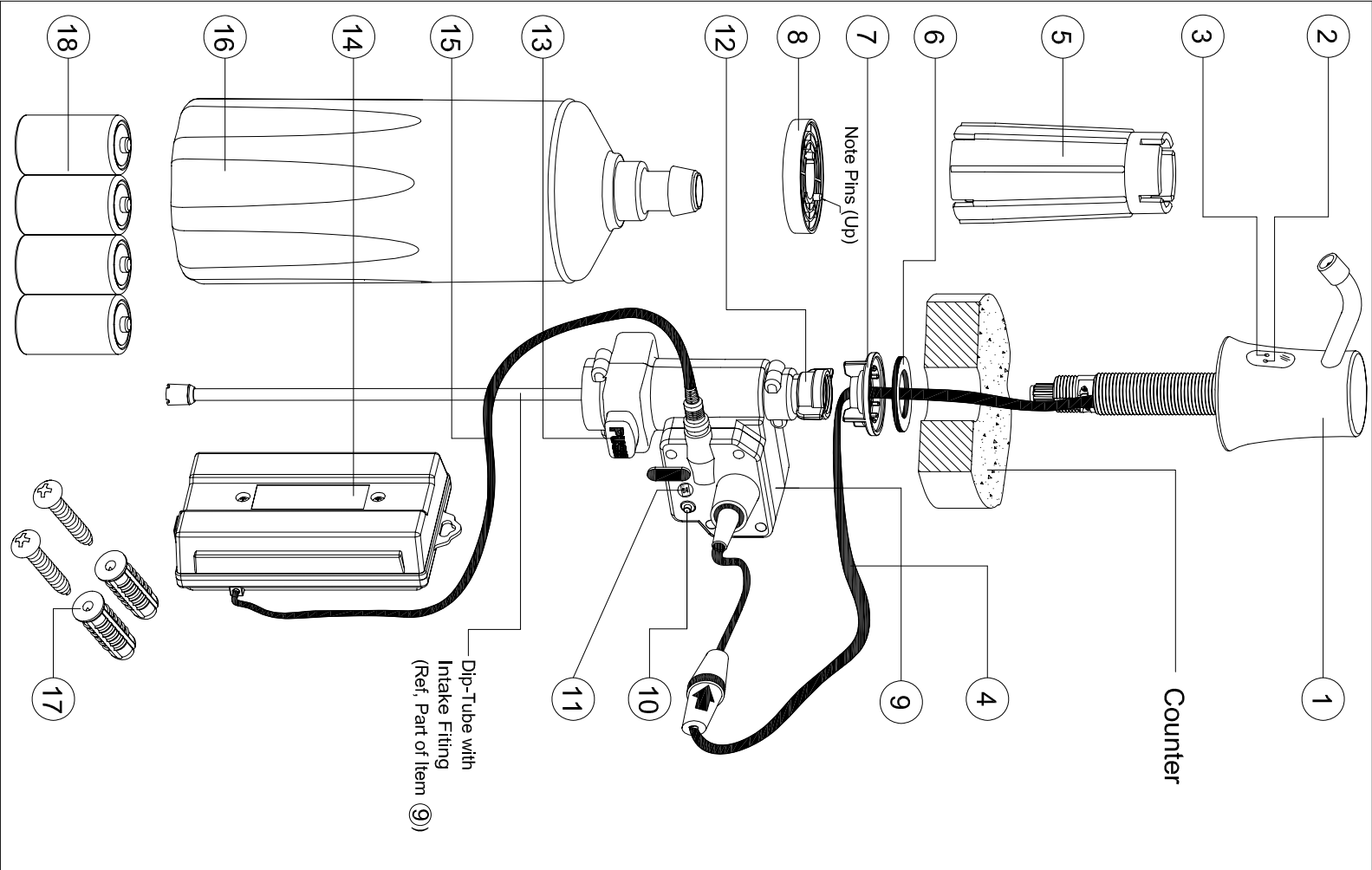
1. Specifications:

Bottle Capacity	1600 ml (54 oz)
Battery Type DC 6V	4 x D 1.5V Alkaline Batteries
Sensing Range	Auto Adjustment
Operating Temp.	4°C~40°C (39°F~104°F)
Activation Time	0.5 ~ 1 sec
Soap Volume	1~2ml (0.03 oz~0.067 oz)
Viscosity	2000~3500 mPa·s (3500 centipoise MAX)

2. Assembly and Packaging List Ref Fig. 1

Item	Description	Qty
1	Spout Assembly	
2	Low Voltage LED Light (Red)	1
3	Low Soap LED Light (Blue)	
4	Spout Assembly Connection	
5	Wrench for tightening item 7 Basin Nut	1
6	Rubber Gasket	2
7	Basin Nut	1
8	Spacer (add 10mm height) Optional	1
9	Control Box	
10	Soap Counter Reset Button (Orange) (Must reset after every refill)	
11	Counter Adjustment Switches 800 times (1600 ml tank) Low Soap LED Disable/Enable (See detail Fig. 14)	1
12	Control Box Mounting Nut	
13	Soap Tank Release Button	
14	Battery Box	
15	Battery Box Connection Cable	1
16	Soap Tank, Refillable	1
17	Screws & Anchors Kit M4x19, Ø7 Hole	2 sets
18	Alkaline Batteries Required D 1.5V PC1300 Duracell Procell Suggested (Not Included)	4

Fig. 1



3. Installation

3-1.Replacing Existing Dispenser.

- A.Remove old components.
- B.Clean area.
- C.Check if hole is large enough.
- C-1.Check if small, enlarge to Ø25.4 (1" Dia)
- C-2.If larger than Ø44.5 (1-3/4" Dia) provide reducer bushing (not included)
- D.Proceed to 3-3.

3-2.New Dispenser Installation.

- A.Choose a suitable location (Fig 2A), cut and paste installation template (Fig. 2B) on the drilling location. (Ensure clearance above and below the counter as shown in Fig. 3).
- B.Drill a 25.4mm (1") diameter hole in counter top.
- C.Clean area around hole.

3-3.Determine whether adding a spacer is needed (Paragraph 8).

- A.Add spacer if sink rim is 10mm (3/8") higher than the counter (Fig. 4).
- B.No need to add spacer if sink is within 10 mm (3/8") above the counter (Fig. 5)
- C.Clean area around hole.

Fig. 2A

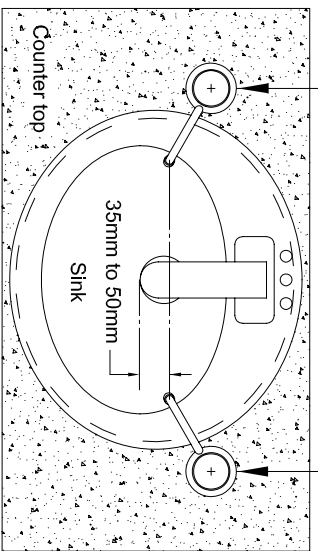


Fig. 2B (Counter drilling template)

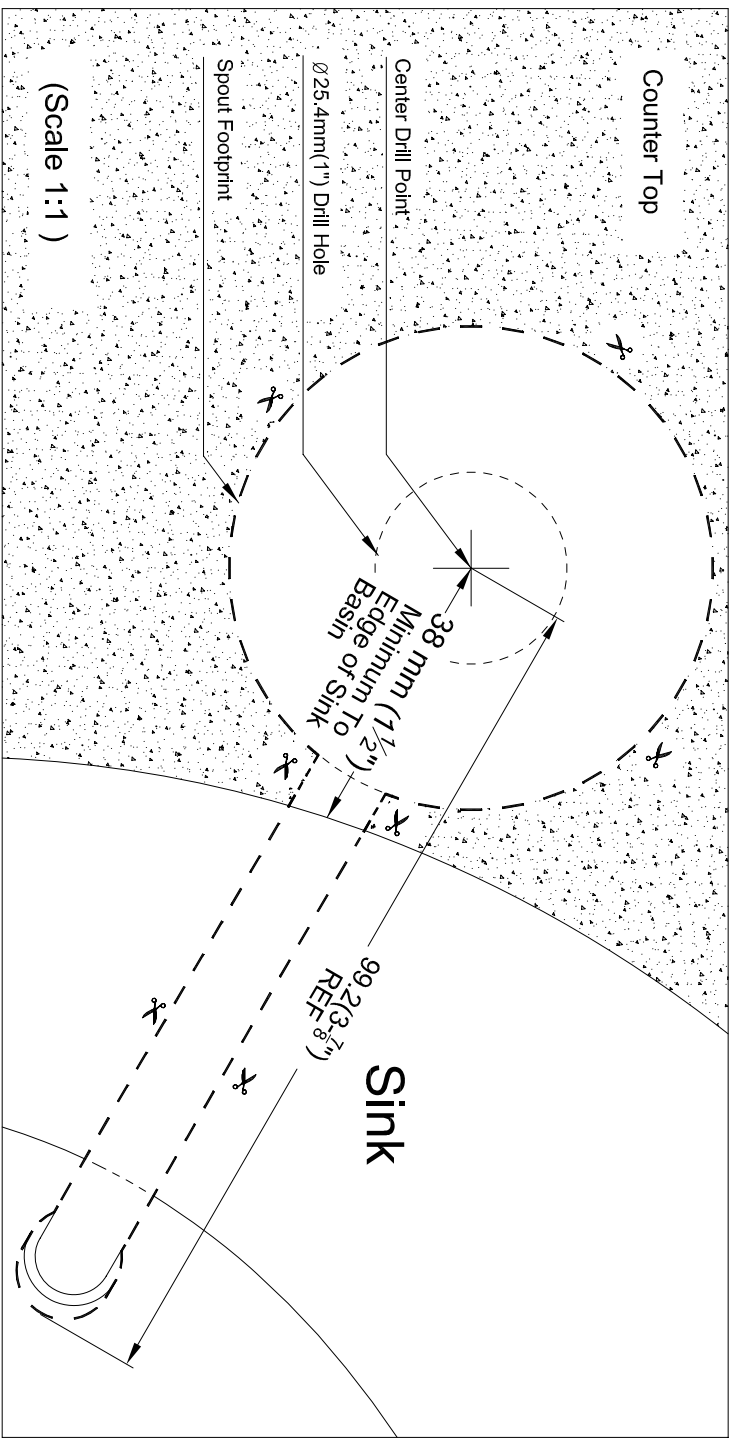


Fig. 3

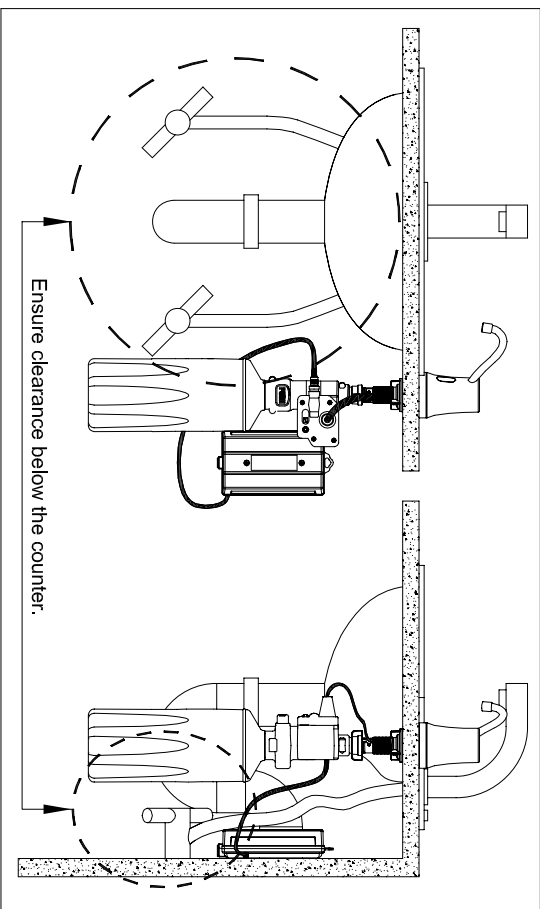


Fig. 4

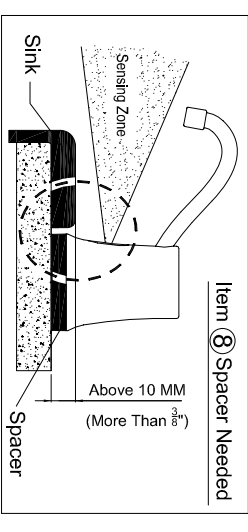
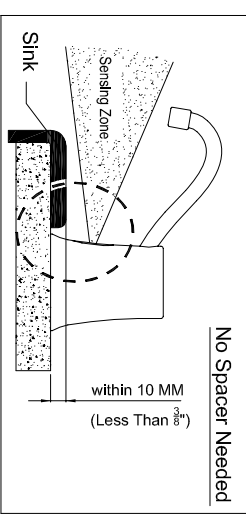


Fig. 5



4.Spout Installation:

4-1.Do You Need Spacer? (Fig. 7).

- 1.Add spacer, engage pins & grooves.
- 2.Place first rubber gasket.
- 3.Place spout shank into counter hole.
- 4.Place second rubber gasket.
- 5.Place basin nut.
- 6.Adjust spout angle (Fig. 6) then tighten by hand with wrench provided.

4-2.No Spacer Needed (Fig. 8).

- 1.Guides spout shank into counter hole.
- 2.Place rubber gasket.
- 3.Place basin nut.
- 4.Adjust spout angle (Fig. 6) then tighten by hand with wrench provided.

Fig. 7

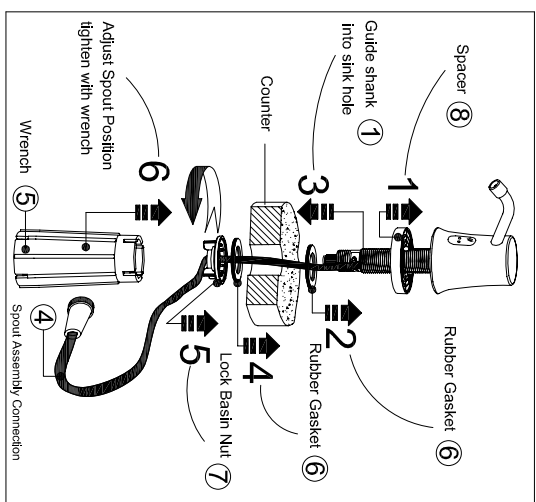
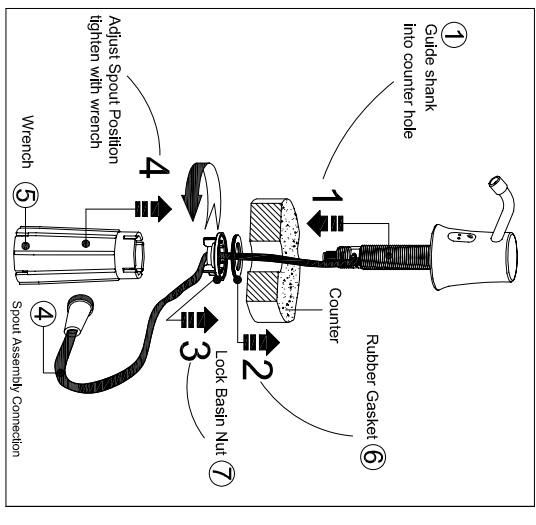


Fig. 8



Dispenser Mounting Hole Drilling Template
(Scale 1:1)
Opposite Side Fig. 2B.

7. Refill Soap Supply:

(Fig. 12).

- 1.Ensure soap is free of particles (Viscosity 2000–3500 mPa·s).
- 2.Ensure filling cup and funnel are clean.
- 3.Max. filling level as shown in Fig. 12.
- 4.Soup tank will dip-on from bottom up. Avoid Kinking Dip-tube
- 5.Push counter reset button (must reset after every refill).
- 6.Press PUSH to release soap tank for refilling.
- 7.Clean soap tank with water periodically.
- 8.When low soap leve indicator is turned off (see Fig. 14), remember to check regularly and refill soap when level is approximately 20 MM(3/4") from bottom.

8.Operation:

- 1.Start the system by passing your hand under the spout. Soap will dispense automatically within 1 second. (Fig. 13) (Dispense 10–20 times for first time use to prime dip-tube).
- 2.Refill soap when soap level is low.(Fig. 12).
- 3.Low soap LED condition indicator can be turned ON or OFF (see Fig. 14). Factory setting is preset to ON.

9. Maintenance:

- 1.Use soft and moist cloth to clean. Avoid spraying water directly at the system.
- 2.Clean sensor cover with care. Avoid scratching the cover.
- 3.Replace batteries every year on anniversary of installation or sooner if high use requires.
- 4.During power connection, red LED light will flash four times to indicate system reset/ready.

Fig. 12

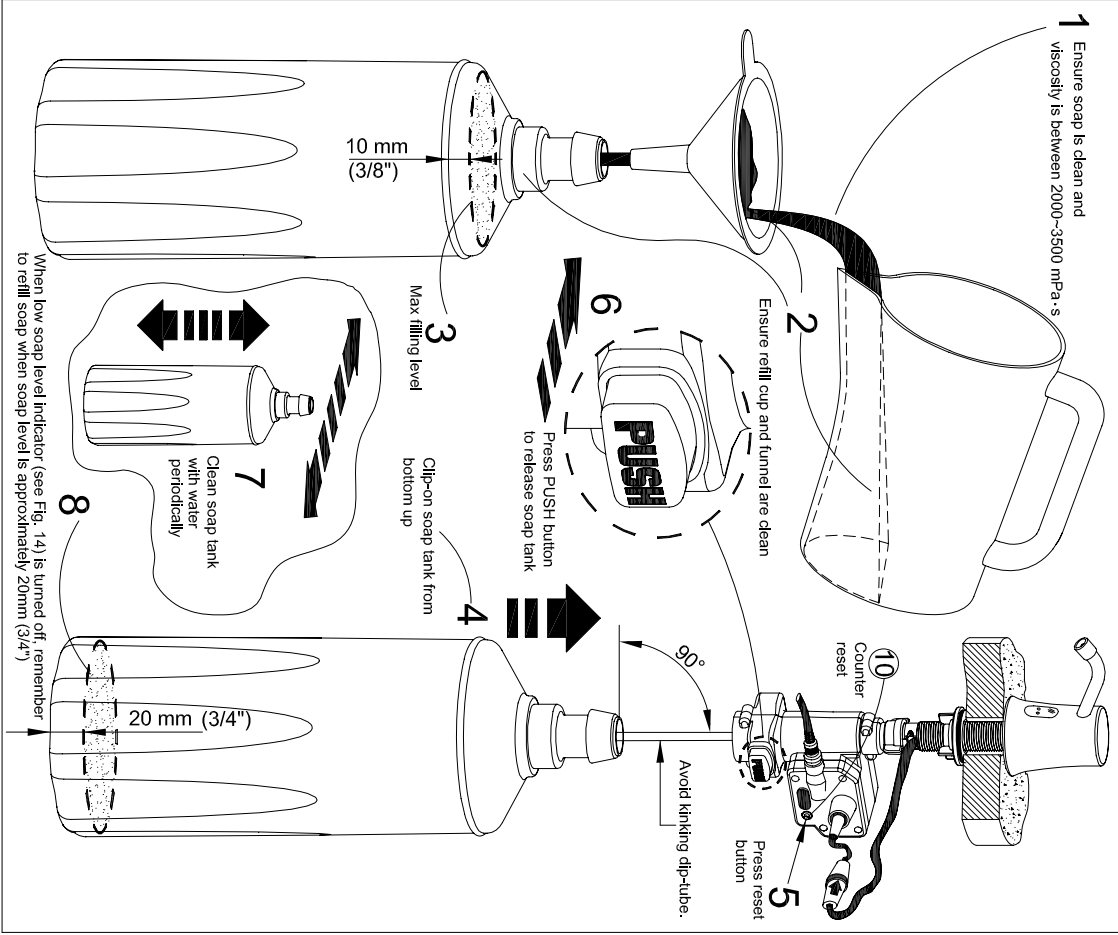


Fig. 13

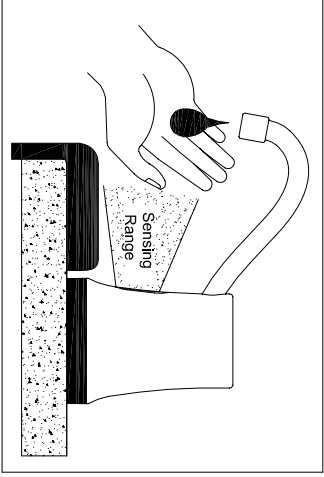
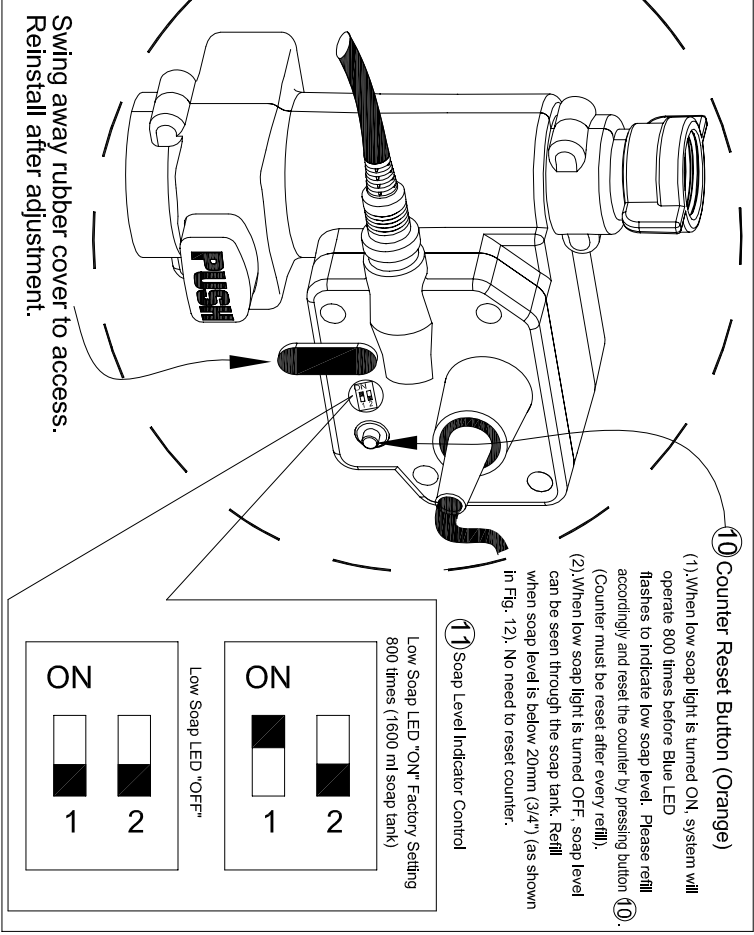


Fig. 14



10. Troubleshooting:

Problem	Diagnosis & Solutions
Red LED not working	<ul style="list-style-type: none">• Check if batteries are properly installed.• Change batteries if power is depleted.• Sensor cover is blocked or dry. Please clean sensor cover with care.
Red LED solid on	<ul style="list-style-type: none">• Batteries low.• Replace batteries.
Red LED flashing	<ul style="list-style-type: none">• Sensor is detecting an object. Remove any object that is causing false activation.• System malfunction; please consult with distributor.
Blue LED flashing	<ul style="list-style-type: none">• Low Soap Level.• Press counter reset button ⑩.• Refill Soap• System malfunction; please consult with distributor.
Low dispensing volume	<ul style="list-style-type: none">• Remove and clean soap tube and tip. Reinstall.• Verify soap viscosity is in range.• System malfunction; please consult with distributor.
Not dispensing	<ul style="list-style-type: none">• Reinstall all cables. Check soap level, (ensure battery voltage is above 5.4 V).• System malfunction; please consult with distributor.
Problem not described above	<ul style="list-style-type: none">• Please consult distributor.

5. Control Box Installation:

- 5-1. Installation procedure (Fig. 9).
- 1.Ensure area around soap tank release button ⑬ and counter reset button ⑩ and connection line is clear for operation
- 2.Confirm position then turn mounting nut to tighten control box onto spout strank.
- 3.Plug-in connection line ④ from spout into control box.

Fig. 9

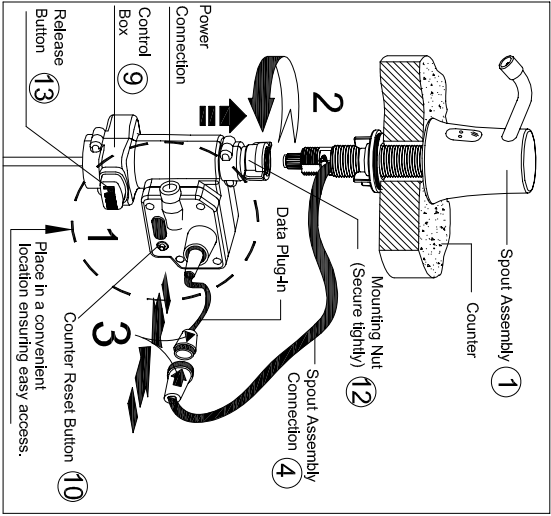
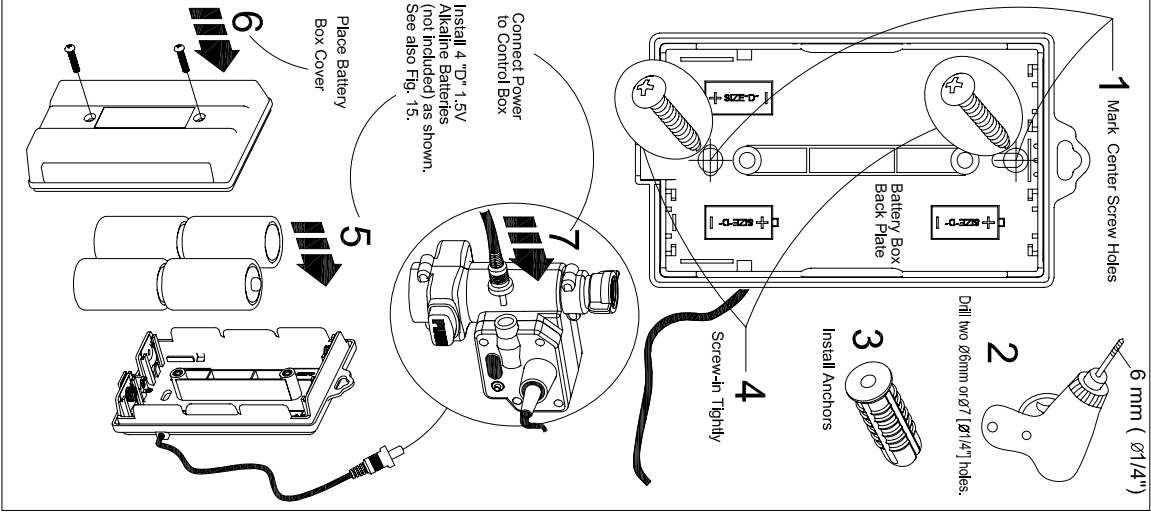


Fig. 10



6. Battery Box Installation:

- 6-1. Correct Polarity (Fig. 15).
- Make sure the batteries are installed in correct polarity position.

6-2. Wall mount (Fig. 10).

- 1.Mark screw holes with back plate.
- 2.Drill two Ø6mm or Ø7 [Ø1/4"] holes.
- 3.Install anchors.
- 4.Screw in the backplate tightly.
- 5.Install 4 "D" 1.5V alkaline batteries (Fig. 15).
- 6.Place battery box cover.
- 7.Connect power line into control box.

6-3. Removable installation (Fig. 11).

- 1.Drill a Ø6mm or Ø7 [Ø1/4"] hole in a convenient location.
- 2.Install anchor.
- 3.Drive in the screw to leave partially out.
- 4.Hang the battery box on the screw.
- 5.Connect power line into control box.

Fig. 15

