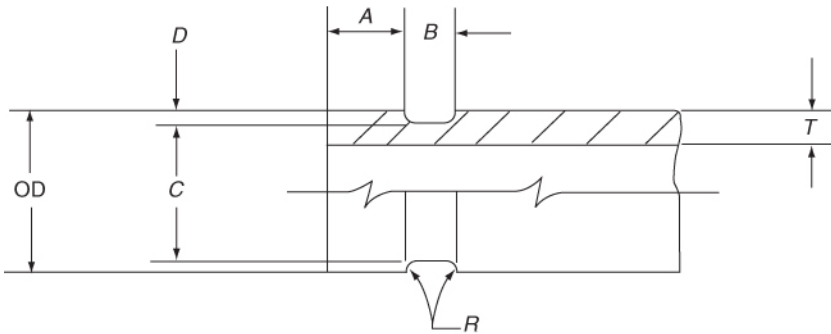


# RIGID GROOVED DI PIPE

## Rigid Grooves



NOTE: Grooving dimensions are the same for any one pipe outside diameter (OD), regardless of pipe class and pressure.

Size	Class <sup>1</sup>	Pipe	Gasket Seat	Groove Width	Groove Diameter	Radius	Groove Depth	
		OD	A	B	C <sup>2</sup>		Min.	Max.
(inches)		(inches)						
4	53	4.8	0.840	0.375	4.563 +0 -0.020	0.120	0.096	0.151
6	53	6.9	0.840	0.375	6.656 +0 -0.020	0.120	0.100	0.154
8	53	9.1	0.840	0.500	8.781 +0 -0.025	0.145	0.104	0.177
10	53	11.1	0.950	0.500	10.813 +0 -0.025	0.145	0.114	0.186
12	53	13.2	1.015	0.500	12.906 +0 -0.030	0.145	0.117	0.192
14	53	15.3	1.015	0.625	14.969 +0 -0.030	0.165	0.126	0.206
16	53	17.4	1.340	0.625	17.063 +0 -0.030	0.165	0.128	0.208
18	54	19.5	1.340	0.625	19.125 +0 -0.030	0.185	0.148	0.228
20	55	21.6	1.340	0.625	21.219 +0 -0.030	0.185	0.150	0.230
24	56	25.8	1.340	0.625	25.406 +0 -0.030	0.185	0.157	0.237
30	56	32.0	1.625	0.750	31.550 +0 -0.035	0.215	0.195	0.283
36	56	38.3	1.625	0.750	37.850 +0 -0.035	0.215	0.195	0.283

1. Pipe class tolerances conform to ANSI/AWWA C151/A21.51

2. C are average values. Ovality of C diameter must lie within OD tolerances.

### ANSI/AWWA Standards

#### ANSI/AWWA C151/A21.5, Ductile-Iron Pipe, Centrifugally Cast for Water.

Ductile Iron TYTON JOINT Pipe is centrifugally cast in metal molds in accordance with ANSI/AWWA C151/A21.5.

#### ANSI/AWWA C104/A21.4, Cement-Mortar Lining For Ductile-Iron Pipe and Fittings For Water.

The cement-mortar lining and inside coating are in accordance with ANSI/AWWA C104/ A21.4. Special linings and/or coatings can be furnished for specific conditions.

#### ANSI/AWWA C606-06, Grooved and Shouldered Joints