

## Specifications

### PFXCA Series

# Lead-Free Commercial and Heavy Duty Stops



#### Product Features

- Lead-free brass body
- Lead-free brass stem
- Operating pressure: 125psi maximum
- Operating temperature: 40°F-160°F

#### Codes and Certifications

- cUPC approved
- ASME A112.18.1/CSA B125.1
- NSF/ANSI/CAN 61
- NSF 372- Low Lead

#### Model Numbers

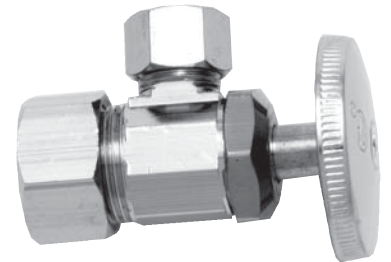
##### Lavatory Supply Kits

- PFXCAC32CL12\* LF 5/8 OD X 3/8 OD COMM LAV KIT
- PFXCAC32CLKL12\* LF 5/8 COMP X 3/8 LAV SPLY KIT LK
- PFXCAS32CL12\* LF 1/2 SWT X 3/8 OD COMM LAV KIT
- PFXCAS32CLKL12\* LF 1/2 SWT X 3/8 COMM LAV KIT LK
- PFXGAZ32CL12 LF 1/2 SWT EXT X 3/8 COMM LAV KIT
- PFXGAZ32CLKL12 LF 1/2 SWT X 3/8 COMM LAV KIT LK
- PFXCAT22CL12 LF 3/8 IPS X 3/8 OD COMM LAV KIT
- PFXCAT22CLKL12 LF 3/8 IPS X 3/8 COMM LAV KIT LK
- PFXCAT32CL12 LF 1/2 IPS X 3/8 OD COMM LAV KIT
- PFXCAT32CLKL12 LF 1/2 IPS X 3/8 COMM LAV KIT LK

##### HD Lavatory Supply Kits

- PFXHAT32CL12 LF 1/2 IPS X 3/8 OD COMM LAV KIT
- PFXHAT32CLKL12 LF 1/2 IPS X 3/8 COMM LAV KIT LK
- PFXHAT33CLKL12 LF 1/2 IPS X 1/2 COMM LAV KIT LK
- PFXHATT22CLKL12 LF 3/8 IPS X 3/8 COMM LAV KIT LK

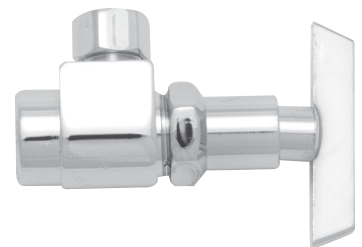
\*For use copper tube only.



PFXCAC32C



PFXGAZ32CLK



PFXHAT32CLK

#### Warranty and Codes

This PROFLO product carries a 1-year limited warranty. ASME A112.18.1-2005/CSA B125.1-05.

