



a Geberit company

2100 South Clearwater Drive
Des Plaines, IL 60018
Phone: 847-803-5000
Fax: 847-803-5454
www.chicagofaucets.com

FOR TECHNICAL ASSISTANCE
1-800-TEC-TRUE (1-800-832-8783)

ROUGH-IN

FITTING NO.

E34JKABCP

SUBMITTED MODEL NO.

BY: SID

DATE: 06-27-13

CHK: *[Signature]*

REV:

SUBMITTED AS SHOWN

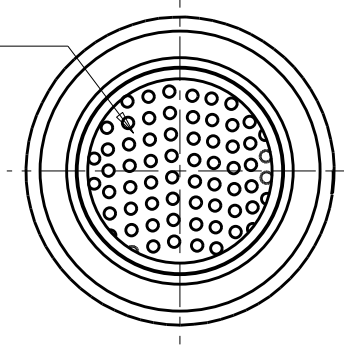
SUBMITTED AS NOTED

SEE ATTACHED FOR
SUBMITTED MODIFICATION

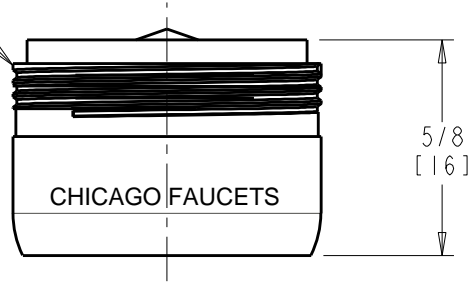
JOB NAME

ITEM NO.

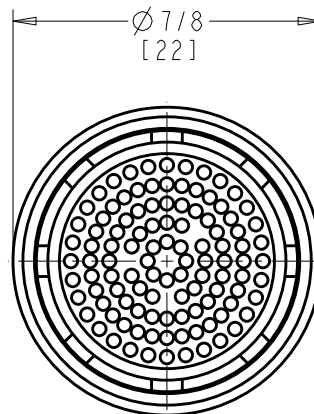
ORANGE INSERT
INDICATES 1.5 GPM



13/16-27
MALE THREAD



5/8
[16]



Ø 7/8
[22]

DIMENSIONS ARE IN INCHES AND [MILLIMETERS].

TECHNICAL DATA

- PRESSURE COMPENSATING SOFTFLO AERATOR
- 1.5 GPM [5.7 L/min.] MAXIMUM FLOW RATE
- FINISH: CHROME PLATE

- ASME A112.18.1/CSA B125.1 COMPLIANT

ROUGHING IN DIMENSIONS MAY VARY AND ARE SUBJECT TO CHANGE. NO RESPONSIBILITY IS ASSUMED FOR USE OF SUPERCEDED OR VOIDED DATA.