

General Service Bulletin

TAM7 Pump Down Issue w/ Two-Step Scroll Units

Models: TAM7 Air Handlers (See page 5)

Serial Numbers: 12494XXXXX to 13081XXXXX

ORDER No: **SSA-SVB26A-EN**

DATE: **July 16, 2013**

Introduction

We have received reports of periodic pump downs in outdoor products that utilize the unloading scroll compressor (step scroll) due to an issue with the TAM7 EEV Control board. The actions described in this bulletin are not being taken to address a safety concern. This is a “fix-on-fail” action.

Discussion

If you have a TAM7 matched with an unloading scroll compressor outdoor unit-

4A7A7024-60	4A6H7024-60
4A7A6024-60	4A6H6024-60
4A7A5061	4Twx6024-60
4TTB6024-61	4TWR7024-60
4TTX6024-60	

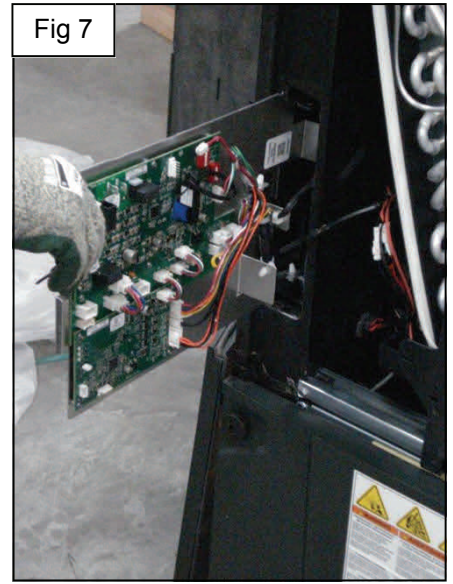
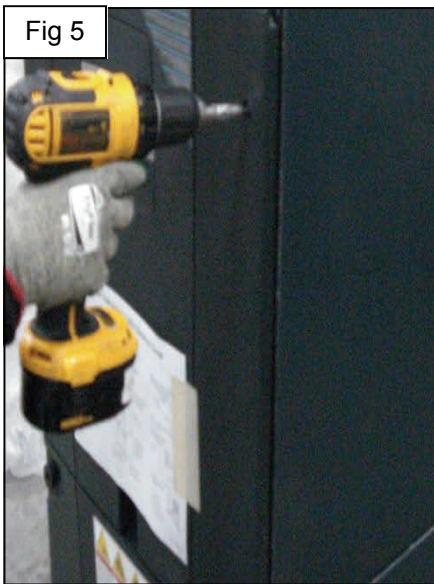
For a full model number list of outdoor units that have unloading scroll compressors, see page 6:

that experiences periodic pump down conditions, replace the EEV control board CNT06879 with CNT06903. If CNT06903 is already installed, follow normal troubleshooting procedures to determine the root cause of the problem.

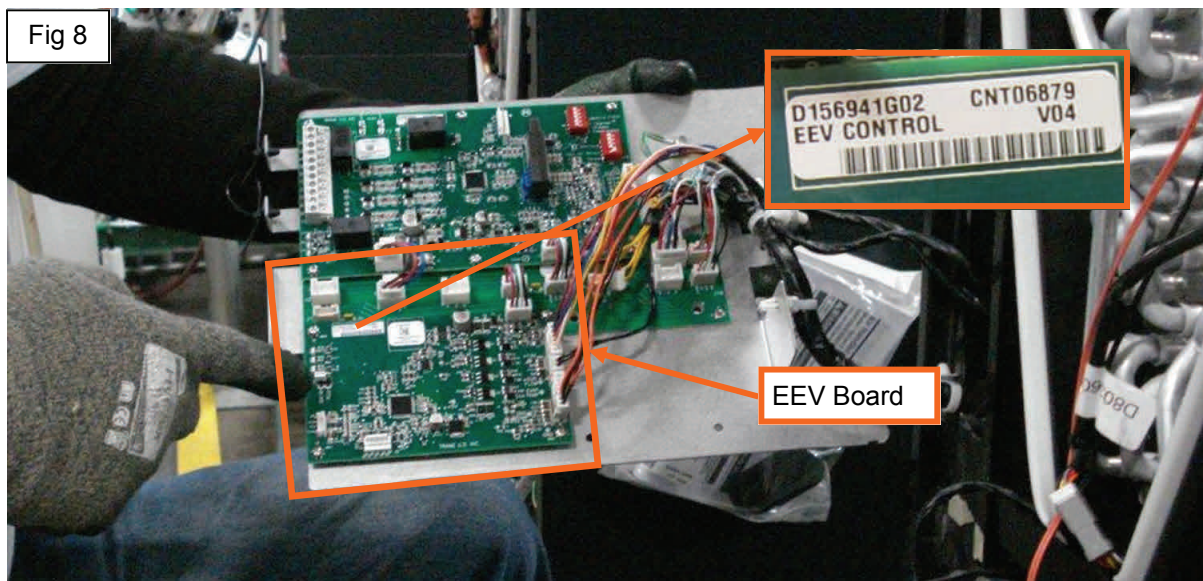
The refrigerant system pumping down results in cycling of the outdoor unit on the LPCO (Low Pressure Cut Out). The pump down condition may occur randomly during operation. This condition is not necessarily seen during startup. Testing has shown that the CNT06879 EEV Control board may cause the EEV to close to the point which may cause the LPCO to trip. It has been determined that this issue is caused by the firmware associated with CNT06879.

Field Action

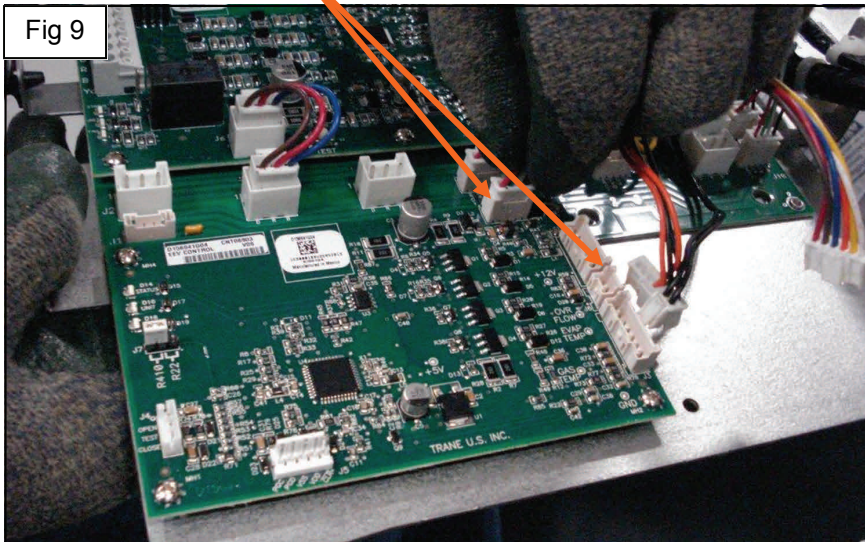
1. Unscrew coil panel fasteners (2 screws) (See Fig 5)
2. Remove coil panel and locate control board (See Fig 6)
3. Remove control board from slot (See Fig 7)



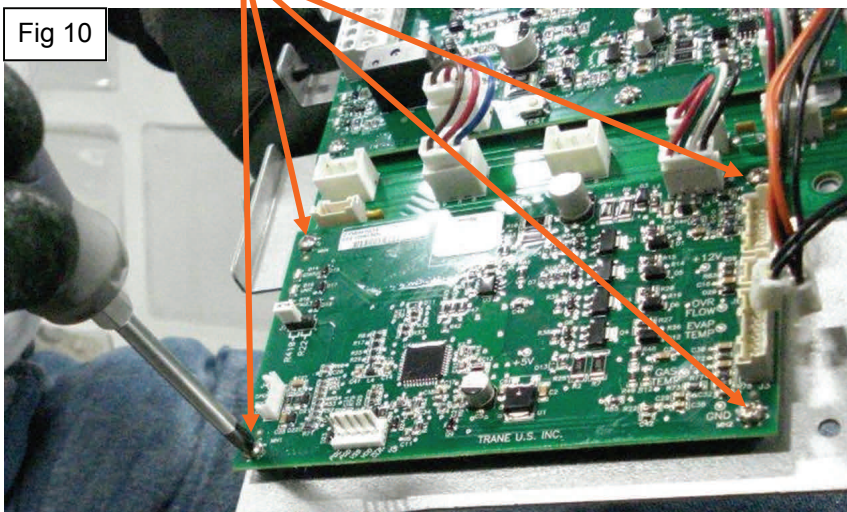
4. Inspect EEV control board. If the board is CNT06879, it should be replaced with CNT06903 (See Fig 8). If the control board is CNT06903, skip to step 10 .



5. Remove harness connectors from EEV control board (See Fig 9)



6. Remove 4 screws and retain. (See Fig 10)



7. Remove EEV Control Board CNT06879 and replace with CNT06903
8. Use the 4 screws from step 10 to attach CNT06903
9. Reconnect harness connectors
10. Slide control board back into slot



Parts Ordering Information

Order replacement EEV Control board (CNT06903) through your local Trane or American Standard parts sales offices.

Parts Disposition Information

Dispose of or return parts as directed by your local Trane or American Standard Parts Offices.

Questions

Distributor personnel Contact your local Field Service Representative.

Below is a list of the affected TAM7 air handler models. See page 6 for a list of outdoor units with unloading scroll compressors.

List of Affected Air handler Models			
TAM7A0A24H21SBB	TAM7A0B30H21SBB	TAM7A0C36H31SBB	TAM7A0C48H41SBA
TAM7A0A24H21SCB	TAM7A0B30H21SCB	TAM7A0C36H31SCB	TAM7B0C60H51SAA
TAM7A0B30H21SBA	TAM7A0C36H31SBA	TAM7A0C42H31SBA	TAM7B0C60H51SBA

AC Models with Unloading Scroll Compressor				
4TTX6024A1000AA	4TTX6036E1000AA	4TTX6048G1000BA	4TTX8036A1000AA	4TTR6048A1000BA
4TTX6024B1000AA	4TTX6036E1000AB	4TTX6060A1000AA	4TTX8048A1000AA	4TTR6048A1000AA
4TTX6024C1000AA	4TTX6036G1000AA	4TTX6060B1000AA	4TTX8060A1000AA	4TTR6060A1000AA
4TTX6024E1000AA	4TTX6036G1000BA	4TTX6060B1000BA	4TTR7024A1000AA	4TTR6060A1000BA
4TTX6024G1000AA	4TTX6048A1000AA	4TTX6060C1000AA	4TTR7036A1000AA	4TTR6061B1000AA
4TTX6024G1000BA	4TTX6048B1000AA	4TTX6060C1000AB	4TTR7048A1000AA	4TTX5061E1000AA
4TTX6036A1000AA	4TTX6048B1000BA	4TTX6060E1000AA	4TTR7060A1000AA	4TTX5061E1000BA
4TTX6036B1000AA	4TTX6048C1000AA	4TTX6060E1000BA	4TTR6024A1000BA	4TTX5061E1000CA
4TTX6036B1000BA	4TTX6048E1000AA	4TTX6060E1000CA	4TTR6024A1000AA	4TTX6061H1000AA
4TTX6036C1000AA	4TTX6048E1000BA	4TTX6060G1000AA	4TTR6036A1000BA	4TTR5061E1000AA
4TTX6036C1000AB	4TTX6048G1000AA	4TTX8024A1000AA	4TTR6036A1000AA	4TTR5061E1000BA
4TTR5061E1000CA	4A7A6024G1000AA	4A7A6048B1000AA	4A7A6060C1000AA	4A7A5061E1000CA
4TTB4061E1000AA	4A7A6024G1000BA	4A7A6048B1000BA	4A7A6060C1000BA	4A7A6061H1000AA
4TTB4061E1000BA	4A7A6036A1000AA	4A7A6048C1000AA	4A7A6060E1000AA	
4TTB4061E1000CA	4A7A6036B1000AA	4A7A6048C1000BA	4A7A6060E1000BA	
4TTB4061E1000DA	4A7A6036B1000BA	4A7A6048E1000AA	4A7A6060E1000CA	
4TTB6061A1000AA	4A7A6036C1000AA	4A7A6048E1000BA	4A7A7024A1000AA	
4A7A6024A1000AA	4A7A6036C1000BA	4A7A6048G1000AA	4A7A7036A1000AA	
4A7A6024B1000AA	4A7A6036E1000AA	4A7A6048G1000BA	4A7A7048A1000AA	
4A7A6024C1000AA	4A7A6036G1000AA	4A7A6060A1000AA	4A7A7060A1000AA	
4A7A6024C1000BA	4A7A6036G1000BA	4A7A6060B1000AA	4A7A5061E1000AA	
4A7A6024E1000AA	4A7A6048A1000AA	4A7A6060B1000BA	4A7A506E1000BA	

HP Models with Unloading Scroll Compressor				
4TWX6024A1000AA	4TWX6048B1000BA	4TWR7036A1000AA	4A6H6024E1000BA	4A6H6048G1000AA
4TWX6024B1000AA	4TWX6048C1000AA	4TWR7048A1000AA	4A6H6024G1000AA	4A6H6048G1000BA
4TWX6024C1000AA	4TWX6048E1000AA	4TWR7060A1000AA	4A6H6024G1000BA	4A6H6060A1000AA
4TWX6024E1000AA	4TWX6048E1000BA	4TWR6024A1000AA	4A6H6024G1000ABB	4A6H6060B1000AA
4TWX6024E1000AB	4TWX6048G1000AA	4TWR6024A1000BA	4A6H6036A1000AA	4A6H6060B1000BA
4TWX6024E1000BA	4TWX6048G1000BA	4TWR6024A1000BB	4A6H6036B1000AA	4A6H6060C1000AA
4TWX6024G1000AA	4TWX6060A1000AA	4TWR6036A1000AA	4A6H6036B1000BA	4A6H6060C1000BA
4TWX6024G1000BA	4TWX6060B1000AA	4TWR6036A1000AB	4A6H6036C1000AA	4A6H6060E1000AA
4TWX6024G1000BB	4TWX6060B1000BA	4TWR6036A1000BA	4A6H6036C1000BA	4A6H6060E1000BA
4TWX6036A1000AA	4TWX6060C1000AA	4TWR6048A1000AA	4A6H6036E1000AA	4A6H6060E1000CA
4TWX6036B1000AA	4TWX6060C1000AB	4TWR6048A1000BA	4A6H6036E1000BA	4A6H6060G1000AA
4TWX6036B1000BA	4TWX6060E1000AA	4TWR6060A1000AA	4A6H6036G1000AA	4A6H7024A1000AA
4TWX6036C1000AA	4TWX6060E1000BA	4TWR6060A1000BA	4A6H6048A1000AA	4A6H7036A1000AA
4TWX6036C1000AB	4TWX6060E1000CA	4A6H6024A1000AA	4A6H6048B1000AA	4A6H7048A1000AA
4TWX6036E1000AA	4TWX8024A1000AA	4A6H6024B1000AA	4A6H6048B1000BA	4A6H7060A1000AA
4TWX6036E1000BA	4TWX8036A1000AA	4A6H6024C1000AA	4A6H6048C1000AA	
4TWX6036G1000AA	4TWX8048A1000AA	4A6H6024C1000BA	4A6H6048C1000BA	
4TWX6048A1000AA	4TWX8060A1000AA	4A6H6024E1000AA	4A6H6048E1000AA	
4TWX6048B1000AA	4TWR7024A1000AA	4A6H6024E1000AB	4A6H6048E1000BA	



Literature Order Number	SSA-SVB26A-EN
File Number	
Supersedes	Bulletin Revised by ACES AC SUPPLY NORTH_JM
Stocking Location	Electronic Only

American Standard Heating & Air Conditioning and Trane has a policy of continuous product data and product improvement and reserves the right to change design and specifications without notice. Only qualified technicians should perform the installation and servicing of equipment referred to in this bulletin.