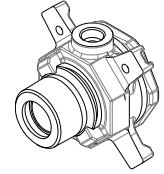
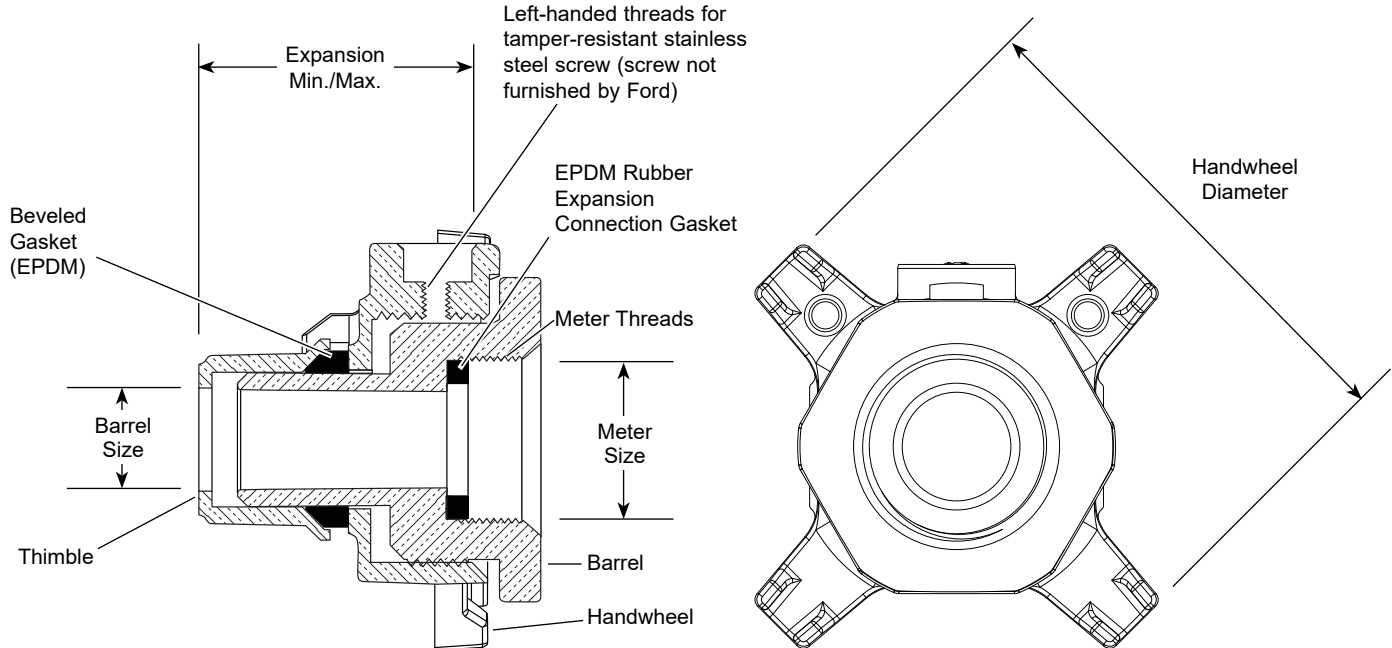


# SUBMITTAL INFORMATION

## Expansion Connection - (ECL-4-NL style)



### LOCKING EXPANSION CONNECTION LESS SECURITY SCREW - HANDWHEEL TYPE



METER SIZE	BARREL SIZE	HANDWHEEL DIAMETER	EXPANSION		APPROX. WT. LBS.	CATALOG NUMBER
			MIN.	MAX.		
1"	1"	4-1/8"	1-15/16"	2-3/8"	1.9	ECL-4-NL

## FEATURES

- All brass that comes in contact with potable water conforms to AWWA Standard C800 (ASTM B584, UNS C89833)
- The product has the letters "NL" cast into the main body for lead-free identification
- Certified to NSF/ANSI Standard 61 and NSF/ANSI Standard 372 where applicable
- Brass components that do not come in contact with potable water conform to AWWA Standard C800 (ASTM B62 and ASTM B584, UNS C83600, 85-5-5-5)
- Expansion Connection attaches to the meter; together, they are installed as an expandable unit
- Meter and Expansion Connection unit can be installed or removed with one hand, without a wrench
- Designed to accommodate a security screw that locks handwheel, restricting unauthorized personnel from accessing the water system
- Security screw is not furnished with this product, contact factory for security screw options
- Thimble nose piece does not rotate after contact with the rubber yoke end gasket. No "walking out"
- 150 maximum working pressure

The Ford Meter Box Company considers the information in this submittal form to be correct at the time of publication. Item and option availability, including specifications, are subject to change without notice. Please verify that your product information is current.



**The Ford Meter Box Company, Inc.**  
P.O. Box 443, Wabash, Indiana U.S.A. 46992-0443  
Phone: 260-563-3171 / Fax: 800-826-3487  
Overseas Fax: 260-563-0167  
www.fordmeterbox.com

10/10/16

Submitted By: