



# ELLIOTT ELECTRIC SUPPLY

We Deliver...Lower Cost, Quality Products, & Personal Service

3804 South Street  
75964-7263, TX Nacogdoches  
Phone: 936-569-7941  
Fax: 936-560-4685



## TY242232UB11UNV 2X2 T8 Lay In *Simkar LLC*

Catalog Number	TY242232UB11UNV
Manufacturer	Simkar LLC
Description	Troffer
Weight per unit	N/A
Product Category	Fluorescent Recessed Architect

### Descriptions

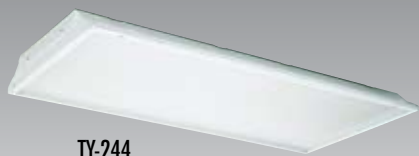
Long Description	TROFFER
Product Type	Fluorescent Recessed Light Fixture

### Manufacturer Information

Brand	Simkar LLC
GTIN	00027029802996
Manufacturers Part Number	TY242-232U-B11-UNV-6
UPC	027029802996

### Packaging

Carton	1
Weight Per each	0



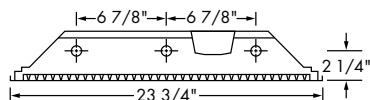
TY-244



## Features & Benefits

- Top embossments for strength.
- Ballast embossment provides full contact for superior heat dissipation.
- Strengthening ribs on sides.
- Full access plate with double KO's. Screws included.
- Two built in T-bar clips on 2' wide models.
- End plate attachment with screws, not tabs.
- Upturned side rail edge for rigidity and safer handling.
- Mitered door corners for better fit than overlap corners.
- Improved large cam latches open door with ease. No tools needed!
- Full depth 1/2" door accepts 1/2" louver without notching.
- Built-in lens retainers.
- Door end screws — not tabs! — for strength and easy lens replacement.
- Built-in door hinge on side rail. No pop rivets.
- Ballast cover tabs prevent pinched wires.
- Metal light traps instead of gasket that deteriorates.
- Passes torque test for strength and minimal overall sag.
- Superb lamp spacing: 4 1/8" centers on 4-lamp fixtures. Allows lamp removal in any order.
- Lamp-pin slots for ease of lamp installation.
- Socket bar held in place with slot tab — removable from inside fixture.
- Hemmed end plate. Double-thick fold adds strength and eliminates sharp edge.
- Machine-installed shunts eliminate loose socket bar connections on electronic troffers.

## Dimensions



## Housing

Die-formed heavy gauge steel with high-gloss, baked white enamel finish over rust inhibiting phosphate coat. Flush white steel door frame with mitered corners that can be hinged from either side. Swing-action cam latches provide positive fit. Light traps standard. Access plate providing 2 KO's and ground screw.

## Shielding

Clear prismatic acrylic lens is standard. Other lens options available.

## Electrical

Fully wired for UNV 120-277V, 50-60Hz operation with thermally protected, automatic resetting Class P, sound rated A ballast as standard unless otherwise specified. UL listed.

## Mounting

Lay-in (T) or Flange (F) troffer.

## Versatile Troffer And Lens Ordering Information

Series	Diffuser	Door Frame	Size
T = Lay-In F = Flange XF = Powder coat, flange XT = Powder coat, lay-in	Y = Clear prismatic acrylic (standard) B = .125 clear prismatic polycarbonate C = .200 clear prismatic acrylic K = .125 clear prismatic acrylic O = .140 high impact P = acrylic drop dish U = .156 clear prismatic acrylic W = White acrylic Z = Other - Contact Factory	Steel, white (standard) FW = Flush, aluminum, white RW = Regressed, aluminum, white	122 = 1 x 2 124 = 1 x 4 242 = 2 x 2 244 = 2 x 4

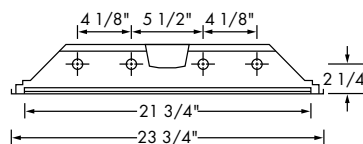
# Lamps	Lamp Type	Options	Ballast	Switching	Voltage
2	14 = 14W 24" T5	SR = Specular Reflector	B11 = Electronic T8	For 3 and 4 lamp units Blank = dual ballasts	UNV = 120-277V
3	24 = 24W 24" T5HO	ELS1 = Emergency Lighting (low lumens)	B11HP(x) = HPT8*	3L = (1) 3-lamp ballast	120 = 120V
4	28 = 28W 48" T5 32 = 32W 48" T8 32U = 32W U6" T8*** 40TT = 40W 22" T8** 54 = 54W 48" T5HO	ELS2 = Emergency Lighting (medium lumens) ELS3 = Emergency Lighting (high lumens)	B12 = Electronic T5 B14 = Electronic TT D = Dimming (specify ballast)	4L = (1) 4-lamp ballast  For 2 lamp units Blank = single ballast 2/1L = (2) 1-lamp ballasts	277 = 277V 347 = 347V

\*CEE listed T8; specify (L)ow, (N)ormal, or (H)igh ballast factor. Contact factory for NEMA Premium.

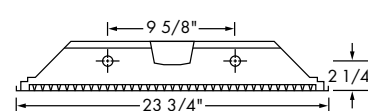
\*\*Requires dedicated voltage ballast on 3-lamp models

\*\*\*For 1-5/8" please specify.

Options	Accessories
L = Lamps Installed (Specify Lamps) (U-lamp and TT lamps not installed) FL4 = 3/8", 6' flex with two #18, one ground and two connectors FL5 = 3/8", 6' flex with three #18, one ground and two connectors M = Master; includes 9' intertie and snap-in connector S = Satellite; includes snap-in connector FB = Fast Blow Fuse SB = Slow Blow Fuse BP = Bulk Pack LG = Lens Gasketing LDG = Lens and Door Gasketing LDFG = Lens, Door, and Frame Gasketing M4 = MIRO 4 reflector (93% reflectivity)	EC = Earthquake Clip, 4-pack  FTI (Flange Trim Kits) FTI 12 = 1' x 2' FTI 14 = 1' x 4' FTI 22 = 2' x 2' FTI 24 = 2' x 4'



TY, TK, TB




**TY 244**

**FY 124**


Troffers are ideal for grid, drywall and plaster ceilings. Choose from a wide selection of ballast, lamp configurations and lenses.



- Shallow 3-3/4" depth fits suspended or plaster ceilings.
- Metal light traps prevent light leak.
- Swing action cam latches for easy, tool-free access.
- Integral door hinges allow door to hinge or latch from either side.
- Built in T-Bar clips securely hold fixture to T-Bar grid.
- Die-formed, heavy gauge, steel housing.
- U.L. listed.

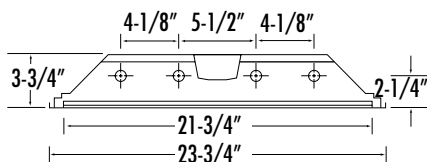
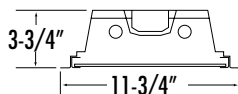
## Troffers Ordering Information

Series	Size	Lamps
<b>TY</b> = Lay-In	<b>124</b> = 1 x 4	<b>232U</b> = (2) 32W U6" T8**
<b>FY</b> = Flange	<b>242</b> = 2 x 2	<b>232</b> = (2) 32W 48" T8
	<b>244</b> = 2 x 4	<b>240</b> = (2) 34 or 40W 48" T12
		<b>332</b> = (3) 32W 48" T8
		<b>340</b> = (3) 34 or 40W 48" T12
		<b>417</b> = (4) 17W 24" T8
		<b>432</b> = (4) 32W 48" T8
		<b>440</b> = (4) 34 or 40W 48" T12

\*\* For 1-5/8", please specify

Options	Ballast	Switching	Voltage
<b>ELS1</b> = Emergency Lighting (low lumens)	<b>B11</b> = Electronic T8	<i>For 3 and 4 lamp units</i>	<b>UNV</b> = 120-277V
<b>ELS2</b> = Emergency Lighting (medium lumens)	<b>B22</b> = LPF T8/T12 120V	<i>Blank = dual ballasts</i>	<b>120</b> = 120V
<b>ELS3</b> = Emergency Lighting (high lumens)		<b>3L</b> = (1) 3-lamp ballast	<b>277</b> = 277V
		<b>4L</b> = (1) 4-lamp ballast	

## Dimensions



### Options

**L** = Lamps Installed (Specify Lamps) (U-lamp and TT lamps not installed)  
**FL4** = 3/8", 6' flex with two #18, one ground and two connectors  
**FL5** = 3/8", 6' flex with three #18, one ground and two connectors