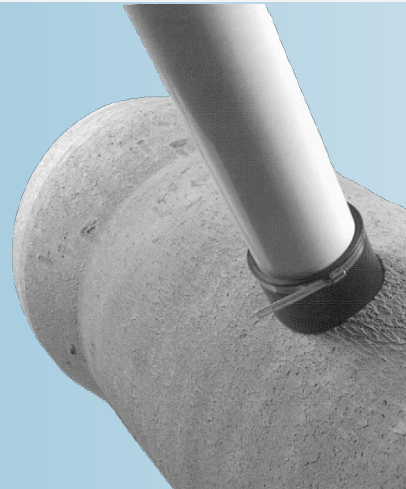


Kor-N-Tee® Pipe-to-Pipe Connector

Economical,
watertight seal for
concrete or smooth
wall pipe.



The Kor-N-Tee Pipe-to-Pipe Connector is an economical, watertight seal for concrete pipe that can be installed quickly and easily without complete excavation of the pipe and disruption of the bedding.

Designed for concrete pipe 12 inches and larger with lateral connections 4-10 inches; it provides a flexible lateral connection that accommodates ground movement and helps prevent shear. The toggle and wedge installation band eliminates the need for glue, epoxy or grout when making a connection.

The “positive stop” located inside of the Kor-N-Tee prohibits protrusion of the lateral pipe into the main line and materials of construction meet or exceed ASTM C-923 specifications.

INSTALLATION INSTRUCTIONS:

1. Core a hole in the main line consistent with the model number for the lateral pipe O.D.
2. Inspect the inside surface of the cored hole. If there is porosity or wire-to-cement separation, use patching or hydraulic cement to smooth the surface.
3. Insert the Kor-N-Tee Assembly into the hole and expand the Wedge or Toggle Korband.
4. Insert the lateral pipe until it “bottoms” on the positive stop in the Kor-N-Tee.
5. Install the Lateral Pipe Clamp in the molded groove and tighten to 60 inch pounds using T-Handle Torque Wrench, P/N 80090.

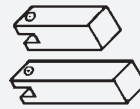
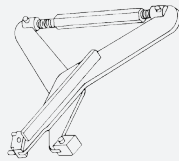
Sizing Chart

Connector P/N	Lateral Pipe O.D. Range	Hole Size Range	Pipe Clamp	Min. Pipe I.D.	Min. Wall Thickness	Installation Tools Required
S006-5	4.125 - 4.800	4.960 - 5.010	I-80	12	2.00	90349
S006-6	5.125 - 5.625	5.960 - 6.010	I-128	12	2.00	90349
S006-7B	5.875 - 6.375	6.995 - 7.055	I-128	12	2.00	90225
S006-7BWS						Torque Wrench
S006-7A	6.750 - 7.750	6.995 - 7.055	I-128	12	2.00	90225
S006-9A	8.000 - 8.750	8.990 - 9.050	I-180	18	2.25	90225 & 10831
S006-9	8.500 - 9.875	8.990 - 9.050	I-180	18	2.25	90225 & 10831
S006-11	10.000 - 10.750	11.025 - 11.115	I-190	21	2.50	90225 & 12305

* The S006-7BWS with Steel Wedge requires 1/2" socket wrench. Torque to 8ft/ Lbs.

INSTALLATION TOOLS FOR TOGGLE KORBAND:

Korband Expander Assembly
(P/N 90349 for 5" & 6")
(P/N 90225 for 7", 9", & 11")



Foot Exentions for 9" and 11"
9": P/N 10831
11": P/N 12305
Use in conjunction with P/N 90225



WWW.TRELLEBORG.COM/PIPE-SEALS