

# P12/1/13UP

Printing 12/01/13d



FORT WORTH • DALLAS • HOUSTON • LITTLE ROCK

## **M&M Manufacturing Company**

Over a Half Century of Quality Sheet Metal Products!

# **Prefab Products**

## **December 1, 2013**



### **Fort Worth**

200 Adolph Street  
Fort Worth, TX 76107-1449  
(817) 334-0034  
Metro (817) 654-4131  
Fax (817) 336-5247

### **Houston**

P.O. Box 41066, 77241-1066  
5555 Guhn Road  
Houston, TX 77040-6125  
(713) 690-0585  
Fax (713) 690-7248



### **North Fort Worth**

P.O. Box 163409, 76161-3409  
4001 Mark IV Parkway  
Fort Worth, TX 76106-4129  
(817) 336-2311  
Metro (817) 429-0270  
Fax (817) 870-2934  
Sales Fax (817) 625-0756

### **Dallas**

P.O. Box 550174, 75355-0174  
360 S. Shiloh Road  
Garland, TX 75042-6616  
(972) 485-1504  
Fax (972) 485-1314

### **Little Rock**

12221 Arch Street  
Little Rock, AR 72206  
(501) 888-3042  
Fax (501) 888-3799



**[info@mmmfg.com](mailto:info@mmmfg.com) ♦ [www.mmmfg.com](http://www.mmmfg.com)**

**Terms & Conditions of Sale**  
**03-28-11**

***Freight Policies***

All local orders of \$5,000 or more are full freight allowed. Outlying areas require order values of \$8,000. Orders that do not qualify for freight allowed are generally shipped best way with freight prepaid and added to the invoice. Drop shipments have a minimum order of \$5,000 and need to be within a 50 mile radius of your branch. Drop shipments over 50 miles require a minimum order of \$8,000.

***Minimum Orders***

M&M has no minimum size requirement for an order. "Add-ons" are welcome with a new purchase order. Not all items in this catalog are "IN STOCK".

***Credit Terms***

Terms are 1% - 10, Net 30 unless otherwise specified. Any invoice remaining unpaid after the due date automatically places the account on hold, and no new purchases may be added to the account until the past due balance is paid in full. Interest will be charged on past due accounts at the rate of 1% per month or at the maximum rate allowable under Texas law. All invoices and billings are payable in Texas at the offices of M&M Manufacturing.

***Return Goods***

It is our aim that our customers be completely satisfied with our products. Products defective when delivered or products received damaged will either be replaced or credited at your option. Order errors and over stock may also be returned but might be subjected to a 15% restocking fee depending on M&M's ability to resale. Special ordered products may NOT be returned. Please call the order department for authorization and the best way to return goods. Products damaged through no fault of M&M are NOT returnable.

***Acceptance of Orders***

All orders are subject to acceptance by our sales department. Orders for less than our standard packaging quantity will be increased to the standard quantity. Most standard packaging quantities are included with your catalog. Where no quantities are listed, please call for packaging information.

***Pricing***

All prices are based on specified carton quantities. Prices are subject to change without notice, however, when possible, M&M Manufacturing Company will give a 30 day written notice. Call (817) 336-2311 for pricing inquiries.

***Packaging***

A 15% charge will be added for broken quantity orders. An "L" (Loose) is indicated in the packaging column for items that are sold individually without a carton. If a carton quantity is not indicated, the items are sold individually.

**Table of Contents**

**Round Snaplock Pipe**

|               |   |
|---------------|---|
| 30 Gauge Pipe | 1 |
| 28 Gauge Pipe | 1 |
| 26 Gauge Pipe | 1 |
| 24 Gauge Pipe | 1 |

**Round Elbows**

|                                         |   |
|-----------------------------------------|---|
| 30 Gauge Elbows - 90 Degree & 45 Degree | 2 |
| 28 Gauge Elbows - 90 Degree & 45 Degree | 2 |
| 26 Gauge Elbows - 90 Degree & 45 Degree | 2 |
| 24 Gauge Elbows - 90 Degree & 45 Degree | 2 |

**Stack Boots**

|                            |   |
|----------------------------|---|
| #201 Universal Stack Boot  | 3 |
| #202 Center-End Stack Boot | 3 |
| #203 90° Angle Stack Boot  | 3 |

**Register Boots**

|                                          |   |
|------------------------------------------|---|
| #201R Universal Register Boot            | 3 |
| #202R Center-End Register Boot           | 3 |
| #203R 90° Angle Register Boot            | 3 |
| #202RF Center-End Register Boot w/Flange | 4 |
| #203RF 90° Angle Register Boot w/Flange  | 4 |

**Dampers**

|                         |   |
|-------------------------|---|
| #300Q Damper w/Quadrant | 4 |
| #300D Inline Damper     | 5 |
| #300EC End Cap          | 5 |

**Reducers**

|                      |   |
|----------------------|---|
| #400 Reducer         | 5 |
| #400 DucTite Reducer | 5 |

**Starting Collars**

|                                                  |   |
|--------------------------------------------------|---|
| #500H Metal Starting Collar                      | 6 |
| #500D Metal Starting Collar w/Damper             | 6 |
| #500DBH Ductboard Starting Collar                | 6 |
| #500DBD Ductboard Starting Collar w/Damper       | 6 |
| #501 Ductboard Starting Collar "Sealed"          | 6 |
| #502 Metal Snap-Together Start Collar            | 7 |
| #503ATH Air Tite Starting Collar                 | 7 |
| #503ATD Air Tite Starting Collar w/Damper        | 7 |
| #503 SATTO 90° Saddle Air Tite Take Off          | 7 |
| #503D SATTO 90° Saddle Air Tite w/Damper         | 7 |
| #507 Collar w/Holes for 1" or 1 1/2" Ductboard   | 8 |
| #507D Collar w/Damper for 1" or 1 1/2" Ductboard | 8 |
| #508 Start Collar for 1 1/2" Ductboard           | 8 |
| #510 45° Side Take-off                           | 8 |
| #510D 45° Side Take-off w/Damper                 | 8 |

**Register Boots**

|                                              |    |
|----------------------------------------------|----|
| #601 Register Box w/Rail Flange (Std Size)   | 9  |
| #651 Register Box w/o Rail Flange (Std Size) | 9  |
| #MP-FDC Flex-Duct Couplings                  | 9  |
| #MP-FDS Flex-Duct Supports                   | 9  |
| #MP-SOR Snap-On Rails                        | 9  |
| #601 & #651 Available Sizes                  | 10 |

**DucTite® Register Boxes**

|                                               |    |
|-----------------------------------------------|----|
| #602 DucTite Register Boxes                   | 11 |
| #602R6 DucTite Register Boxes w/ R6 Insulator | 11 |
| #602R8 DucTite Register Boxes w/ R8 Duct Wrap | 12 |

**Insulated Register Boxes - R4**

|                                                                 |    |
|-----------------------------------------------------------------|----|
| #640 Insulated Register Box 4" Tall                             | 13 |
| #641 Insulated Register Box 4" Tall w/Rail Flange               | 13 |
| #643SST Insulated Sleet Slant Top w/Rail Flange                 | 14 |
| #645 Insulated Register Box w/Adjustable 45° Collar w/Snap-Rail | 14 |
| #648 Side Outlet Ins. Reg. Box 9" Tall w/Rail Flange            | 14 |
| #649 Ins. Reg Box 9" Tall w/o Collar w/oRail Flange             | 15 |
| #650 End Outlet Ins. Reg. Box 9" Tall w/Rail Flange             | 15 |

**Insulated Register Boxes - R6**

|                                                                 |    |
|-----------------------------------------------------------------|----|
| #640 Insulated Register Box 4" Tall                             | 16 |
| #641 Insulated Register Box 4" Tall w/Rail Flange               | 16 |
| #643SST Insulated Sleet Slant Top w/Rail Flange                 | 17 |
| #645 Insulated Register Box w/Adjustable 45° Collar w/Snap-Rail | 17 |
| #648 Side Outlet Ins. Reg. Box 9" Tall w/Rail Flange            | 17 |
| #649 Ins. Reg Box 9" Tall w/o Collar w/oRail Flange             | 18 |
| #650 End Outlet Ins. Reg. Box 9" Tall w/Rail Flange             | 18 |

**Wyes - #800**

|                         |    |
|-------------------------|----|
| #800 Wyes               | 19 |
| #860R Flow through Boot | 20 |

**Tees - #900**

|           |    |
|-----------|----|
| #900 Tees | 20 |
|-----------|----|

**Round Ceiling Drops**

|                                  |    |
|----------------------------------|----|
| #690 & #690D Round Ceiling Drops | 21 |
|----------------------------------|----|

**Stackheads**

|                                  |    |
|----------------------------------|----|
| #770 Stackhead w/Square-To-Round | 21 |
|----------------------------------|----|

**Ductboard Products**

|                              |    |
|------------------------------|----|
| #800DBT Triangle Wye         | 21 |
| #MP-DBP Lay-In Filter Plenum | 21 |

**Miscellaneous Rough-In Products**

|                     |    |
|---------------------|----|
| #MP-NP Notch Plates | 22 |
|---------------------|----|

**Venting Products**

|                                   |    |
|-----------------------------------|----|
| #1402 Aluminum Flexduct           | 22 |
| #V-CAV Combustion Air Vents (CAV) | 22 |
| #MP-KB Kruger Box                 | 22 |

**Vent-A-Hood - Jenn Air®**

|                                          |    |
|------------------------------------------|----|
| #V-WV Round Wall Vents                   | 23 |
| #V-WS 10" x 3¼" Wall Stack               | 23 |
| #V-LE & #V-SW 10" x 3¼" Rectangle Elbows | 23 |
| #V-WV 10" x 3¼" Aluminum Wall Vents      | 23 |
| #V-SV Slab Vents                         | 23 |
| #201V 10" x 3¼" Adapter Boots            | 23 |
| #V-JATA Jenn Air® Telescoping Assembly   | 23 |
| #V-BD Butterfly Dampers                  | 24 |
| #V-E Escutcheons                         | 24 |
| #V-7VJ Vent-A-Hood Jacks                 | 24 |

**Dryer Vent Products**

|                                         |    |
|-----------------------------------------|----|
| #DV-DVJ 4" Dryer Vent Jacks             | 24 |
| #DV-DV Dryer Vents                      | 24 |
| #V-BDD 4" Backdraft Damper              | 24 |
| #V-DVTA Dryer Vent Telescoping Assembly | 24 |

Parts indicated with grayed "NS = Non-stock" are made to order.

Stocked items are available at the Mark IV location only, and may not be available from other plants on the next regular delivery truck. Please contact a sales representative for delivery availability to your location.

**ROUND SNAPLOCK PIPE**

**# 100 & # 101  
Snaplock Pipe**



| Size in Inches | Snaplock 30 Ga | Pkg   |
|----------------|----------------|-------|
| 3 x 36         | 10001303603    | 10 Ea |
| 3 x 60         | 10001306003    | 10 Ea |
| 4 x 36         | 10001303604    | 10 Ea |
| 4 x 60         | 10001306004    | 10 Ea |
| 5 x 36         | 10001303605    | 10 Ea |
| 5 x 60         | 10001306005    | 10 Ea |
| 6 x 36         | 10001303606    | 10 Ea |
| 6 x 60         | 10001306006    | 10 Ea |
| 7 x 36         | 10001303607    | 10 Ea |
| 7 x 60         | 10001306007    | 10 Ea |
| 8 x 36         | 10001303608    | 10 Ea |
| 8 x 60         | 10001306008    | 10 Ea |
| 9 x 36         | 10001303609    | 10 Ea |
| 9 x 60         | 10001306009    | 10 Ea |
| 10 x 36        | 10001303610    | 10 Ea |
| 10 x 60        | 10001306010    | 10 Ea |
| 12 x 36        | 10001303612    | 10 Ea |
| 12 x 60        | 10001306012    | 10 Ea |
| <b>28 Ga</b>   |                |       |
| 4 x 60         | 10001286004    | 10 Ea |
| 5 x 60         | 10001286005    | 10 Ea |
| 6 x 60         | 10001286006    | 10 Ea |
| 7 x 60         | 10001286007    | 10 Ea |
| 8 x 60         | 10001286008    | 10 Ea |
| 9 x 60         | 10001286009    | 10 Ea |
| 10 x 60        | 10001286010    | 10 Ea |
| 12 x 60        | 10001286012    | 10 Ea |
| 14 x 36        | 10001283614    | 10 Ea |
| 14 x 60        | 10001286014    | 10 Ea |
| 16 x 36        | 10001283616    | 10 Ea |
| 18 x 36        | 10001283618    | 10 Ea |
| <b>26 Ga</b>   |                |       |
| 5 x 60         | 10002266005    | 10 Ea |
| 6 x 60         | 10002266006    | 10 Ea |
| 7 x 60         | 10002266007    | 10 Ea |
| 8 x 60         | 10002266008    | 10 Ea |
| 9 x 60         | 10002266009    | 10 Ea |
| 10 x 60        | 10002266010    | 10 Ea |
| 12 x 60        | 10002266012    | 10 Ea |
| 14 x 60        | 10002266014    | 10 Ea |
| 16 x 60        | 10002266016    | 10 Ea |
| 18 x 60        | 10002266018    | 10 Ea |
| 20 x 36        | 10002263620    | 10 Ea |
| 22 x 36        | 10002263622    | 5 Ea  |
| 24 x 36        | 10002263624    | 5 Ea  |
| <b>24 Ga</b>   |                |       |
| 20 x 60        | 10002246020    | 10 Ea |
| 22 x 60        | 10002246022    | 10 Ea |
| 24 x 60        | 10002246024    | 10 Ea |

| Size in Inches | Nu Lock 30 Ga | Pkg   |
|----------------|---------------|-------|
| 4 x 36         | 11001303604   | 10 Ea |
| 4 x 60         | 11001306004   | 10 Ea |
| 5 x 36         | 11001303605   | 10 Ea |
| 5 x 60         | 11001306005   | 10 Ea |
| 6 x 36         | 11001303606   | 10 Ea |
| 6 x 60         | 11001306006   | 10 Ea |
| 7 x 36         | 11001303607   | 10 Ea |
| 7 x 60         | 11001306007   | 10 Ea |
| 8 x 36         | 11001303608   | 10 Ea |
| 8 x 60         | 11001306008   | 10 Ea |
| 9 x 36         | 11001303609   | 10 Ea |
| 9 x 60         | 11001306009   | 10 Ea |
| 10 x 36        | 11001303610   | 10 Ea |
| 10 x 60        | 11001306010   | 10 Ea |
| 12 x 36        | 11001303612   | 10 Ea |
| 12 x 60        | 11001306012   | 10 Ea |
| <b>28 Ga</b>   |               |       |
| 14 x 36        | 11001283614   | 10 Ea |
| 14 x 60        | 11001286014   | 10 Ea |
| 16 x 36        | 11001283616   | 10 Ea |
| 18 x 36        | 11001283618   | 10 Ea |

**# 110 & # 111  
Nu Lock Pipe**



| <b>2" SMACNA Gauges *</b> |       |
|---------------------------|-------|
| 3" - 14"                  | 28 GA |
| 16" - 18"                 | 26 GA |
| 20" - 24"                 | 24 GA |

\* SMACNA 2005 HVAC Duct Construction Standards, 3rd Edition, 3.8, Table 3-5

**ELBOWS**

**90° ROUND ELBOWS**

| Size | 30 Ga       | CTN   |
|------|-------------|-------|
| 3"   | 12501309003 | 24 ea |
| 3"   | 12101309003 | 12 ea |
| 4"   | 12501309004 | 24 ea |
| 4"   | 12101309004 | 12 ea |
| 5"   | 12501309005 | 24 ea |
| 5"   | 12101309005 | 12 ea |
| 6"   | 12501309006 | 24 ea |
| 6"   | 12101309006 | 12 ea |
| 7"   | 12501309007 | 12 ea |
| 7"   | 12101309007 | 12 ea |
| 8"   | 12501309008 | 12 ea |
| 8"   | 12101309008 | 12 ea |
| 9"   | 12501309009 | 12 ea |
| 9"   | 12101309009 | 12 ea |
| 10"  | 12501309010 | 12 ea |
| 10"  | 12101309010 | 12 ea |

**28 Ga**

|     |             |       |
|-----|-------------|-------|
| 3"  | 12101289003 | 1 ea  |
| 4"  | 12101289004 | 12 ea |
| 5"  | 12101289005 | 12 ea |
| 6"  | 12101289006 | 12 ea |
| 7"  | 12101289007 | 12 ea |
| 8"  | 12101289008 | 12 ea |
| 9"  | 12101289009 | 12 ea |
| 10" | 12101289010 | 12 ea |
| 12" | 12501289012 | 6 ea  |
| 12" | 12101289012 | 12 ea |
| 14" | 12501289014 | 6 ea  |
| 14" | 12101289014 | 4 ea  |

**26 Ga**

|     |             |      |
|-----|-------------|------|
| 16" | 12102269016 | 4 ea |
| 18" | 12102269018 | 4 ea |

**24 Ga**

|     |             |      |
|-----|-------------|------|
| 20" | 12102249020 | 4 ea |
| 22" | 12102249022 | 1 ea |
| 24" | 12102249024 | 1 ea |

125 = Adjustable Elbow - Straight

121 = Adjustable Elbow

3" - 14" are boxed, (donut pack available)

16" - 20" donut pack only

22" - 24" Shipped Loose

Long Radius Elbows available, call for quote

**45° ROUND ELBOWS**

| Size | 30 Ga       | CTN  |
|------|-------------|------|
| 4"   | 12101304504 | 8 ea |
| 5"   | 12101304505 | 8 ea |
| 6"   | 12101304506 | 8 ea |
| 7"   | 12101304507 | 8 ea |
| 8"   | 12101304508 | 8 ea |
| 9"   | 12101304509 | 8 ea |
| 10"  | 12101304510 | 8 ea |

**28 Ga**

|     |             |      |
|-----|-------------|------|
| 4"  | 12101284504 | 1 ea |
| 5"  | 12101284505 | 1 ea |
| 6"  | 12101284506 | 1 ea |
| 7"  | 12101284507 | 1 ea |
| 8"  | 12101284508 | 8 ea |
| 9"  | 12101284509 | 1 ea |
| 10" | 12101284510 | 8 ea |
| 12" | 12101284512 | 8 ea |
| 14" | 12101284514 | 8 ea |

**26 Ga**

|     |             |      |
|-----|-------------|------|
| 16" | 12102264516 | 1 ea |
| 18" | 12102264518 | 1 ea |

**24 Ga**

|     |             |      |
|-----|-------------|------|
| 20" | 12102244520 | 1 ea |
|-----|-------------|------|

**90° ROUND ELBOWS**



**45° ROUND ELBOWS**



**2" SMACNA Gauges \***

|           |       |
|-----------|-------|
| 3" - 14"  | 28 GA |
| 16" - 18" | 26 GA |
| 20" - 24" | 24 GA |

\* SMACNA 2005 HVAC Duct Construction Standards, 3rd Edition, 3.8, Table 3-5

**STACK BOOTS**



**# 201 Universal**



**# 202 Center-End**



**# 203 90° Angle**

| Size in Inches | #201 P/N    | CTN   | #202 P/N    | CTN            | #203 P/N    | CTN  |
|----------------|-------------|-------|-------------|----------------|-------------|------|
| 8 x 3¼ x 5     | 201S831/45  | 12 ea |             |                |             |      |
| 10 x 3¼ x 5    | 201S1031/45 | 12 ea | 202S1031/45 | 12 ea          | 203S1031/45 | 1 ea |
| 10 x 3¼ x 6    | 201S1031/46 | 12 ea | 202S1031/46 | 12 ea          | 203S1031/46 | 1 ea |
| 10 x 3¼ x 7    | 201S1031/47 | 12 ea | 202S1031/47 | 12 ea          | 203S1031/47 | 1 ea |
| 12 x 3¼ x 7    | 201S1231/47 | 1 ea  | 202S1231/47 | Call for quote | 203S1231/47 | 1 ea |
| 14 x 3¼ x 8    | 201S1431/48 | 1 ea  |             |                | 203S1431/48 | 1 ea |

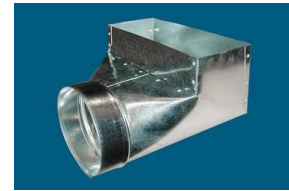
**REGISTER BOOTS**



**# 201R Universal**



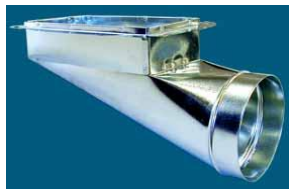
**# 202R Center-End**



**# 203R 90° Angle**

| Size in Inches | #201R P/N   | CTN   | #202R P/N   | CTN   | #203R P/N   | CTN   |
|----------------|-------------|-------|-------------|-------|-------------|-------|
| 8 x 4 x 5      | 651845      | 1 ea  | 202R845     | 12 ea | 203R845     | 12 ea |
| 10 x 2¼ x 5    | 201R1021/45 | 12 ea |             |       | 203R1021/45 | 1 ea  |
| 10 x 2¼ x 6    | 201R1021/46 | 12 ea | 202R1021/46 | 1 ea  | 203R1021/46 | 1 ea  |
| 10 x 4 x 5     | 201R1045    | 1 ea  | 202R1045    | 1 ea  | 203R1045    | 1 ea  |
| 10 x 4 x 6     | 201R1046    | 1 ea  | 202R1046    | 1 ea  | 203R1046    | 1 ea  |
| 10 x 6 x 6     | 6511066     | 1 ea  | 202R1066    | 12 ea | 203R1066    | 12 ea |
| 10 x 8 x 8     | 6511088     | 1 ea  | 202R1088    | 12 ea | 203R1088    | 12 ea |
| 12 x 2¼ x 6    | 201R1221/46 | 12 ea | 202R1221/46 | 1 ea  | 203R1221/46 | 1 ea  |
| 12 x 2¼ x 7    | 201R1221/47 | 12 ea |             |       | 203R1221/47 | 1 ea  |
| 12 x 4 x 6     | 201R1246    | 1 ea  | 202R1246    | 1 ea  | 203R1246    | 1 ea  |
| 12 x 4 x 7     | 201R1247    | 1 ea  | 202R1247    | 1 ea  | 203R1247    | 1 ea  |
| 12 x 6 x 7     | 6511267     | 1 ea  | 202R1267    | 12 ea | 203R1267    | 12 ea |
| 12 x 8 x 8     | 6511288     | 1 ea  | 202R1288    | 1 ea  | 203R1288    | 1 ea  |
| 14 x 2¼ x 6    |             |       |             |       | 203R1421/46 | 1 ea  |
| 14 x 2¼ x 7    | 201R1421/47 | 12 ea |             |       |             |       |
| 14 x 2¼ x 8    | 201R1421/48 | 12 ea |             |       |             |       |
| 14 x 4 x 6     | 201R1446    | 1 ea  | 202R1446    | 1 ea  | 203R1446    | 1 ea  |
| 14 x 4 x 7     | 201R1447    | 1 ea  | 202R1447    | 1 ea  | 203R1447    | 1 ea  |
| 14 x 4 x 8     | 201R1448    | 1 ea  | 202R1448    | 1 ea  | 203R1448    | 1 ea  |
| 14 x 6 x 8     | 6511468     | 1 ea  | 202R1468    | 12 ea | 203R1468    | 10 ea |
| 14 x 8 x 9     | 6511489     | 1 ea  | 202R1489    | 9 ea  | 203R1489    | 10 ea |
| 16 x 6 x 9     | 6511669     | 1 ea  | 202R1669    | 1 ea  | 203R1669    | 1 ea  |

**REGISTER BOOTS (Cont'd.)**



**# 202RF**



**# 203RF 90° With Flange**



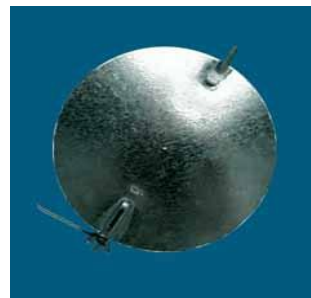
**# 203RF 90° With Flange, With 6" Extension**

| Size in Inches | #202RF P/N | CTN   | #203RF P/N | CTN   | #203RF P/N With 6" Ext | CTN  |
|----------------|------------|-------|------------|-------|------------------------|------|
| 8 x 4 x 5      | 202RF845   | 12 ea | 203RF845   | 12 ea | 203RF6845              | 1 ea |
| 10 x 6 x 6     | 202RF1066  | 12 ea | 203RF1066  | 12 ea | 203RF61066             | 1 ea |
| 10 x 8 x 8     | 202RF1088  | 12 ea | 203RF1088  | 12 ea | 203RF61088             | 1 ea |
| 12 x 6 x 7     | 202RF1267  | 12 ea | 203RF1267  | 12 ea | 203RF61267             | 1 ea |
| 12 x 8 x 8     | 202RF1288  | 1 ea  | 203RF1288  | 1 ea  |                        |      |
| 14 x 6 x 8     | 202RF1468  | 12 ea | 203RF1468  | 8 ea  | 203RF61468             | 1 ea |
| 14 x 8 x 9     | 202RF1489  | 9 ea  | 203RF1489  | 8 ea  | 203RF61489             | 1 ea |
| 16 x 6 x 9     | 202RF1669  | 1 ea  | 203RF1669  | 1 ea  | 203RF61669             | 1 ea |

**DAMPERS**

**# 300Q w/Quadrant**

| Size | #300Q P/N | CTN   |
|------|-----------|-------|
| 4"   | 300Q4     | 24 ea |
| 5"   | 300Q5     | 24 ea |
| 6"   | 300Q6     | 24 ea |
| 7"   | 300Q7     | 24 ea |
| 8"   | 300Q8     | 24 ea |
| 9"   | 300Q9     | 24 ea |
| 10"  | 300Q10    | 24 ea |
| 12"  | 300Q12    | 24 ea |
| 14"  | 300Q14    | 1 ea  |
| 16"  | 300Q16    | 1 ea  |
| 18"  | 300Q18    | 1 ea  |
| 20"  | 300Q20    | 1 ea  |
| 22"  | 300Q22    | 1 ea  |
| 24"  | 300Q24    | 1 ea  |



**# 300Q Damper w/Quadrant**

**DAMPERS (Cont'd.)**



# 300D Inline Damper



# 300EC End Cap

| Size | # 300D Inline Damper |       | # 300EC End Cap |      |
|------|----------------------|-------|-----------------|------|
|      | #300D P/N            | CTN   | #300EC P/N      | CTN  |
| 4"   | 300D4                | 1 ea  | 300EC4          | 1 ea |
| 5"   | 300D5                | 24 ea | 300EC5          | 1 ea |
| 6"   | 300D6                | 25 ea | 300EC6          | 1 ea |
| 7"   | 300D7                | 28 ea | 300EC7          | 1 ea |
| 8"   | 300D8                | 27 ea | 300EC8          | 1 ea |
| 9"   | 300D9                | 25 ea | 300EC9          | 1 ea |
| 10"  | 300D10               | 20 ea | 300EC10         | 1 ea |
| 12"  | 300D12               | 10 ea | 300EC12         | 1 ea |
| 14"  | 300D14               | 12 ea | 300EC14         | 1 ea |
| 16"  | 300D16               | 1 ea  | 300EC16         | 1 ea |
| 18"  | 300D18               | 1 ea  | 300EC18         | 1 ea |
| 20"  |                      |       | 300EC20         | 1 ea |

**REDUCERS**

**# 400/3 Reducer (3 Piece Old Style)**

| Size in Inches | #403 P/N | CTN   |
|----------------|----------|-------|
| 4 x 3          | 40343    | 12 ea |
| 5 x 3          | 40053    | 12 ea |
| 5 x 4          | 40354    | 12 ea |
| 6 x 3          | 40063    | 12 ea |
| 6 x 4          | 40364    | 12 ea |
| 6 x 5          | 40365    | 12 ea |
| 7 x 4          | 40074    | 12 ea |
| 7 x 5          | 40075    | 12 ea |
| 7 x 6          | 40376    | 12 ea |
| 8 x 4          | 40084    | 12 ea |
| 8 x 5          | 40085    | 12 ea |
| 8 x 6          | 40386    | 12 ea |
| 8 x 7          | 40387    | 12 ea |
| 9 x 6          | 40096    | 6 ea  |
| 9 x 7          | 40397    | 6 ea  |
| 9 x 8          | 40398    | 6 ea  |
| 10 x 6         | 400106   | 6 ea  |
| 10 x 7         | 400107   | 6 ea  |
| 10 x 8         | 403108   | 6 ea  |
| 10 x 9         | 403109   | 6 ea  |
| 12 x 6         | 400126   | 1 ea  |
| 12 x 7         | 400127   | 1 ea  |
| 12 x 8         | 400128   | 6 ea  |
| 12 x 9         | 400129   | 6 ea  |
| 12 x 10        | 4031210  | 6 ea  |
| 14 x 8         | 400148   | 1 ea  |
| 14 x 9         | 400149   | 1 ea  |
| 14 x 10        | 4001410  | 6 ea  |
| 14 x 12        | 4031412  | 6 ea  |
| 16 x 10        | 4001610  | 1 ea  |



**# 400/3 Reducer (3 Piece Old Style) Cont'd**

| Size in Inches | #400 P/N | CTN  |
|----------------|----------|------|
| 16 x 12        | 4001612  | 6 ea |
| 16 x 14        | 4001614  | 6 ea |
| 16 x 15        | 4001615  | 1 ea |
| 18 x 12        | 4001812  | 1 ea |
| 18 x 14        | 4001814  | 1 ea |
| 18 x 16        | 4001816  | 1 ea |
| 20 x 14        | 4002014  | 1 ea |
| 20 x 16        | 4002016  | 1 ea |
| 20 x 18        | 4002018  | 1 ea |
| 22 x 20        | 4002220  | 1 ea |
| 24 x 20        | 4002420  | 1 ea |
| 24 x 22        | 4002422  | 1 ea |

**# 400 DucTite® Reducer**

| Size in Inches | #400 P/N | CTN   |
|----------------|----------|-------|
| 4 x 3          | 40043    | 12 ea |
| 5 x 4          | 40054    | 12 ea |
| 6 x 4          | 40064    | 12 ea |
| 6 x 5          | 40065    | 12 ea |
| 7 x 6          | 40076    | 12 ea |
| 8 x 6          | 40086    | 12 ea |
| 8 x 7          | 40087    | 12 ea |
| 9 x 7          | 40097    | 6 ea  |
| 9 x 8          | 40098    | 6 ea  |
| 10 x 8         | 400108   | 6 ea  |
| 10 x 9         | 400109   | 6 ea  |
| 12 x 10        | 4001210  | 6 ea  |
| 14 x 12        | 4001412  | 6 ea  |



**STARTING COLLARS**

| Size | # 500H    |       | # 500D    |       |
|------|-----------|-------|-----------|-------|
|      | #500H P/N | CTN   | #500D P/N | CTN   |
| 4"   | 500H4     | 24 ea | 500D4     | 24 ea |
| 5"   | 500H5     | 24 ea | 500D5     | 24 ea |
| 6"   | 500H6     | 25 ea | 500D6     | 25 ea |
| 7"   | 500H7     | 28 ea | 500D7     | 28 ea |
| 8"   | 500H8     | 22 ea | 500D8     | 22 ea |
| 9"   | 500H9     | 25 ea | 500D9     | 25 ea |
| 10"  | 500H10    | 20 ea | 500D10    | 20 ea |
| 12"  | 500H12    | 18 ea | 500D12    | 15 ea |
| 14"  | 500H14    | 12 ea | 500D14    | 16 ea |
| 16"  | 500H16    | 16 ea | 500D16    | 12 ea |
| 18"  | 500H18    | 12 ea | 500D18    | 10 ea |
| 20"  | 500H20    | 10 ea | 500D20    | 1 ea  |
| 22"  | 500H22    | 10 ea | 500D22    | 1 ea  |
| 24"  | 500H24    | 1 ea  | 500D24    | 1 ea  |



**# 500H Metal Starting Collar**



**# 500D Metal Starting Collar With Damper**

| Size | # 500DBH |       | # 500DBD |       |
|------|----------|-------|----------|-------|
|      | #500DBH  | CTN   | #500DBD  | CTN   |
| 4"   | 500DBH4  | 24 ea | 500DBD4  | 24 ea |
| 5"   | 500DBH5  | 24 ea | 500DBD5  | 24 ea |
| 6"   | 500DBH6  | 28 ea | 500DBD6  | 28 ea |
| 7"   | 500DBH7  | 22 ea | 500DBD7  | 22 ea |
| 8"   | 500DBH8  | 25 ea | 500DBD8  | 25 ea |
| 9"   | 500DBH9  | 20 ea | 500DBD9  | 20 ea |
| 10"  | 500DBH10 | 25 ea | 500DBD10 | 25 ea |
| 12"  | 500DBH12 | 17 ea | 500DBD12 | 17 ea |
| 14"  | 500DBH14 | 12 ea | 500DBD14 | 12 ea |
| 16"  | 500DBH16 | 10 ea | 500DBD16 | 9 ea  |
| 18"  | 500DBH18 | 9 ea  | 500DBD18 | 10 ea |
| 20"  | 500DBH20 | 1 ea  | 500DBD20 | 1 ea  |



**# 500DBH Ductboard Starting Collar**



**# 500DBD Ductboard Starting Collar With Damper**

| Size | # 501    |       |
|------|----------|-------|
|      | #501 P/N | CTN   |
| 4"   | 5014     | 20 ea |
| 5"   | 5015     | 20 ea |
| 6"   | 5016     | 20 ea |
| 7"   | 5017     | 20 ea |
| 8"   | 5018     | 20 ea |
| 9"   | 5019     | 20 ea |
| 10"  | 50110    | 20 ea |
| 12"  | 50112    | 20 ea |
| 14"  | 50114    | 20 ea |
| 16"  | 50116    | 20 ea |
| 18"  | 50118    | 20 ea |
| 20"  | 50120    | 20 ea |



**# 501 Ductboard Starting Collar**

**STARTING COLLARS (Cont'd.)**



**# 502 Metal Snap Together Starting Collar**



**# 503ATH Air Tite Starting Collar**

| Size | # 502                                    |       | # 503ATH  |       |
|------|------------------------------------------|-------|-----------|-------|
|      | #502 P/N                                 | CTN   | #503AT    | CTN   |
| 4"   | 5024                                     | 1 ea  | 503ATH4   | 24 ea |
| 5"   | 5025                                     | 20 ea | 503ATH5   | 20 ea |
| 6"   | 5026                                     | 20 ea | 503ATH6   | 20 ea |
| 7"   | 5027                                     | 20 ea | 503ATH7   | 18 ea |
| 8"   | 5028                                     | 20 ea | 503ATH8   | 22 ea |
| 9"   | 5029                                     | 20 ea | 503ATH9   | 20 ea |
| 10"  | 50210                                    | 20 ea | 503ATH10  | 16 ea |
| 12"  | 50212                                    | 20 ea | 503ATH12  | 16 ea |
| 14"  | 50214                                    | 20 ea | 503ATH14  | 12 ea |
| 16"  | 50216                                    | 20 ea | 503ATH16  | 8 ea  |
| 18"  | 50218                                    | 20 ea | 503ATH18  | 8 ea  |
| 20"  | 50220                                    | 1 ea  | 503ATH20  | 1 ea  |
| 22"  | * 503ATH & 503ATD 22 & 24 is Less Gasket |       | 503ATH22* | 1 ea  |
| 24"  |                                          |       | 503ATH24* | 1 ea  |



**# 503ATD Air Tite Starting Collar w/Damper**



**# 503SATT0 Air Tite 90° Saddle Take Off**

| Size | # 503ATD  |       | # 503SATT0                                                                                                                                                               |             |
|------|-----------|-------|--------------------------------------------------------------------------------------------------------------------------------------------------------------------------|-------------|
|      | #503ATD   | CTN   | #503 P/N                                                                                                                                                                 | Fits Trunk  |
| 4"   | 503ATD4   | 24 ea | 503SATT04                                                                                                                                                                | 14"         |
| 5"   | 503ATD5   | 20 ea | 503SATT05                                                                                                                                                                | 14"         |
| 6"   | 503ATD6   | 20 ea | 503SATT06                                                                                                                                                                | <b>NOTE</b> |
| 7"   | 503ATD7   | 18 ea | 503SATT07                                                                                                                                                                | 14"         |
| 8"   | 503ATD8   | 22 ea | 503SATT08                                                                                                                                                                | 14"         |
| 9"   | 503ATD9   | 20 ea | 503SATT09                                                                                                                                                                | 24"         |
| 10"  | 503ATD10  | 16 ea | 503SATT010                                                                                                                                                               | 24"         |
| 12"  | 503ATD12  | 16 ea | 503SATT012                                                                                                                                                               | 24"         |
| 14"  | 503ATD14  | 12 ea | 503SATT014                                                                                                                                                               | 24"         |
| 16"  | 503ATD16  | 8 ea  | 503SATT016                                                                                                                                                               | 24"         |
| 18"  | 503ATD18  | 1 ea  | <b>NOTE: 503SATT0 Saddle Take Off should only be max of 2" smaller than trunk. Example: 6" Take Off on 8" trunk. Other trunk lines are available - call for a quote.</b> |             |
| 20"  | 503ATD20  | 1 ea  |                                                                                                                                                                          |             |
| 22"  | 503ATD22* | 1 ea  |                                                                                                                                                                          |             |
| 24"  | 503ATD24* | 1 ea  |                                                                                                                                                                          |             |



**# 503SATT0D Air Tite 90° Saddle Take Off w/Damper**



**Typical Scoop Add-On**

| Size | # 503SATT0D |             | START COLLAR SCOOP ADD-ON                              |      |
|------|-------------|-------------|--------------------------------------------------------|------|
|      | #503D P/N   | Fits Trunk  | Scoop P/N                                              | CTN  |
| 4"   |             |             |                                                        | 1 ea |
| 5"   | 503SATT0D5  | 14"         |                                                        | 1 ea |
| 6"   | 503SATT0D6  | <b>NOTE</b> |                                                        | 1 ea |
| 7"   | 503SATT0D7  | 14"         | Add X to P/N before size, e.g. 503ATX4, 503ATDX9, etc. | 1 ea |
| 8"   | 503SATT0D8  | 14"         |                                                        | 1 ea |
| 9"   | 503SATT0D9  | 24"         |                                                        | 1 ea |
| 10"  | 503SATT0D10 | 24"         |                                                        | 1 ea |
| 12"  | 503SATT0D12 | 24"         |                                                        | 1 ea |
| 14"  | 503SATT0D14 | 24"         |                                                        | 1 ea |
| 16"  |             |             |                                                        | 1 ea |
| 18"  |             |             |                                                        | 1 ea |
| 20"  |             |             |                                                        | 1 ea |

**NOTE: Specify trunk size 14" or 16" when ordering 6" 503 Saddle Take Off**

**STARTING COLLARS (Cont'd.)**

| Size | # 507    |       | # 507D    |       |
|------|----------|-------|-----------|-------|
|      | #507 P/N | CTN   | #507D P/N | CTN   |
| 4"   | 5074     | 50 ea | 507D4     | 50 ea |
| 5"   | 5075     | 48 ea | 507D5     | 48 ea |
| 6"   | 5076     | 48 ea | 507D6     | 48 ea |
| 7"   | 5077     | 36 ea | 507D7     | 36 ea |
| 8"   | 5078     | 32 ea | 507D8     | 32 ea |
| 9"   | 5079     | 24 ea | 507D9     | 24 ea |
| 10"  | 50710    | 20 ea | 507D10    | 20 ea |
| 12"  | 50712    | 12 ea | 507D12    | 12 ea |
| 14"  | 50714    | 12 ea | 507D14    | 12 ea |
| 16"  | 50716    | 8 ea  | 507D16    | 8 ea  |
| 18"  | 50718    | 7 ea  | 507D18    | 7 ea  |
| 20"  | 50720    | 1 ea  | 507D20    | 1 ea  |



# 507 Starting Collar for  
 1" or 1½" Ductboard



# 507D Starting Collar  
 with Damper for  
 1" or 1½" Ductboard

| Size | # 508    |       | # 508S    |       |
|------|----------|-------|-----------|-------|
|      | #508 P/N | CTN   | #508S P/N | CTN   |
| 4"   | 5084     | 1 ea  | 508S4     | 1 ea  |
| 5"   | 5085     | 20 ea | 508S5     | 20 ea |
| 6"   | 5086     | 20 ea | 508S6     | 20 ea |
| 7"   | 5087     | 20 ea | 508S7     | 20 ea |
| 8"   | 5088     | 20 ea | 508S8     | 20 ea |
| 9"   | 5089     | 20 ea | 508S9     | 20 ea |
| 10"  | 50810    | 20 ea | 508S10    | 20 ea |
| 12"  | 50812    | 20 ea | 508S12    | 20 ea |
| 14"  | 50814    | 20 ea | 508S14    | 20 ea |
| 16"  | 50816    | 20 ea | 508S16    | 20 ea |
| 18"  | 50818    | 20 ea | 508S18    | 20 ea |
| 20"  | 50820    | 1 ea  | 508S20    | 1 ea  |



# 508 Starting Collar for  
 1" or 1½" Ductboard

# 508S Starting Collar  
 with Sealed Flange  
 On Inside for  
 1" or 1½" Ductboard

| Size | # 510    |      | # 510D    |      |
|------|----------|------|-----------|------|
|      | #510 P/N | CTN  | #510D P/N | CTN  |
| 5"   | 5105     | 1 ea | 510D5     | 1 ea |
| 6"   | 5106     | 1 ea | 510D6     | 1 ea |
| 7"   | 5107     | 1 ea | 510D7     | 1 ea |
| 8"   | 5108     | 1 ea | 510D8     | 1 ea |
| 9"   | 5109     | 1 ea | 510D9     | 1 ea |
| 10"  | 51010    | 1 ea | 510D10    | 1 ea |
| 12"  | 51012    | 1 ea | 510D12    | 1 ea |
| 14"  | 51014    | 1 ea | 510D14    | 1 ea |



# 510 45° Side Take Off



# 510D 45° Side Take Off  
 with Damper

**#510 Series Hole Cut Out Sizes:**  
 5" = 5.5 x 7      8" = 8 x 10      12" = 10 x 16  
 6" = 6 x 8      9" = 9 x 11      14" = 11 x 19  
 7" = 7 x 9      10" = 10 x 12

**REGISTER BOOTS (Standard Size)**



**# 601 Register Box w/Snap-Rail Flange**



**# 651 Register Box w/oSnap-Rail flange**

| Size in Inches | # 601    |       | # 651    |       |
|----------------|----------|-------|----------|-------|
|                | #601 P/N | CTN   | #651 P/N | CTN   |
| 8 x 4 x 4      | 601844   | 24 ea | 651844   | 24 ea |
| 8 x 4 x 5      | 601845   | 24 ea | 651845   | 24 ea |
| 10 x 6 x 5     | 6011065  | 1 ea  |          |       |
| 10 x 6 x 6     | 6011066  | 30 ea | 6511066  | 18 ea |
| 10 x 6 x 7     | 6011067  | 1 ea  | 6511067  | 1 ea  |
| 10 x 8 x 6     | 6011086  | 20 ea |          |       |
| 10 x 8 x 7     | 6011087  | 20 ea |          |       |
| 10 x 8 x 8     | 6011088  | 20 ea | 6511088  | 20 ea |
| 10 x 8 x 9     | 6011089  | 1 ea  |          |       |
| 12 x 6 x 7     | 6011267  | 17 ea | 6511267  | 22 ea |
| 12 x 6 x 8     | 6011268  | 1 ea  | 6511268  | 1 ea  |
| 14 x 6 x 8     | 6011468  | 14 ea | 6511468  | 25 ea |
| 14 x 8 x 9     | 6011489  | 10 ea | 6511489  | 1 ea  |
| 14 x 8 x 10    | 60114810 | 1 ea  | 65114810 | 1 ea  |
| 16 x 6 x 9     | 6011669  | 12 ea | 6511669  | 1 ea  |

**FLEX-DUCT COUPLINGS**



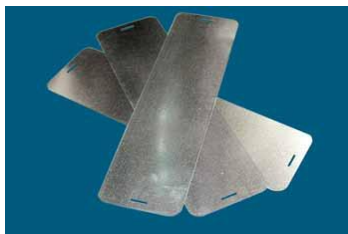
**Riveted Flex-Duct Couplings**



**Snap-Together Flex-Duct Couplings**

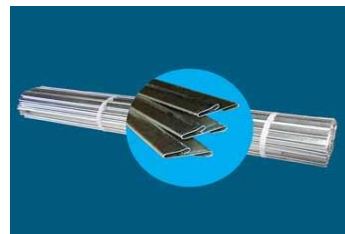
| Size | Riveted Couplings |      | Snap Together Couplings |       |
|------|-------------------|------|-------------------------|-------|
|      | P/N               | CTN  | P/N                     | CTN   |
| 4"   | MP-FDC4           | 1 ea | MP-FDCST4               | 20 ea |
| 5"   | MP-FDC5           | 1 ea | MP-FDCST5               | 20 ea |
| 6"   | MP-FDC6           | 1 ea | MP-FDCST6               | 20 ea |
| 7"   | MP-FDC7           | 1 ea | MP-FDCST7               | 20 ea |
| 8"   | MP-FDC8           | 1 ea | MP-FDCST8               | 20 ea |
| 9"   | MP-FDC9           | 1 ea | MP-FDCST9               | 20 ea |
| 10"  | MP-FDC10          | 1 ea | MP-FDCST10              | 20 ea |
| 12"  | MP-FDC12          | 1 ea | MP-FDCST12              | 20 ea |
| 14"  | MP-FDC14          | 1 ea | MP-FDCST14              | 20 ea |
| 16"  | MP-FDC16          | 1 ea | MP-FDCST16              | 20 ea |
| 18"  | MP-FDC18          | 1 ea | MP-FDCST18              | 20 ea |
| 20"  | MP-FDC20          | 1 ea | MP-FDCST20              | 20 ea |

**FLEX DUCT SUPPORTS**



| Size in Inches | P/N      | CTN   |
|----------------|----------|-------|
| 5 1/2" x 20"   | MP-FDS20 | 25 ea |
| 5 1/2" x 30"   | MP-FDS30 | 25 ea |

**SNAP-ON RAILS**



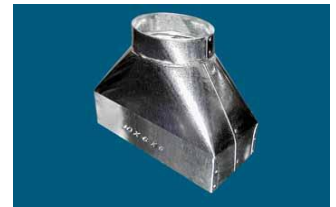
**P/N**  
MP-SOR  
**Available in 60 Piece Bundles or 3,000 Piece Skid Quantities**  
**Snap-On Rails are 25" Long**

**REGISTER BOOTS (Available Sizes)**

| Size in Inches | # 601     |       | # 651     |      |
|----------------|-----------|-------|-----------|------|
|                | #601 P/N  | CTN   | #651 P/N  | CTN  |
| 6 x 6 x 4      | 601664    | 15 ea | 651664    | 1 ea |
| 6 x 6 x 5      | 601665    | 15 ea | 651665    | 1 ea |
| 6 x 6 x 6      | 601666    | 15 ea | 651666    | 1 ea |
| 8 x 4 x 6      | 601846    | 18 ea | 651846    | 1 ea |
| 8 x 6 x 5      | 601865    | 1 ea  |           |      |
| 8 x 6 x 6      | 601866    | 1 ea  | 651866    | 1 ea |
| 8 x 8 x 6      | 601886    | 24 ea | 651886    | 1 ea |
| 8 x 8 x 7      | 601887    | 24 ea | 651887    | 1 ea |
| 8 x 8 x 8      | 601888    | 24 ea | 651888    | 1 ea |
| 10 x 4 x 6     | 6011046   | 1 ea  | 6511046   | 1 ea |
| 10 x 10 x 6    | 60110106  | 24 ea | 65110106  | 1 ea |
| 10 x 10 x 7    | 60110107  | 24 ea | 65110107  | 1 ea |
| 10 x 10 x 8    | 60110108  | 24 ea | 65110108  | 1 ea |
| 10 x 10 x 9    | 60110109  | 24 ea | 65110109  | 1 ea |
| 10 x 10 x 10   | 601101010 | 24 ea | 651101010 | 1 ea |
| 12 x 4 x 6     | 6011246   | 1 ea  | 6511246   | 1 ea |
| 12 x 4 x 7     | 6011247   | 1 ea  | 6511247   | 1 ea |
| 12 x 6 x 6     | 6011266   | 1 ea  | 6511266   | 1 ea |
| 12 x 8 x 8     | 6011288   | 1 ea  | 6511288   | 1 ea |
| 12 x 12 x 6    | 60112126  | 12 ea | 65112126  | 1 ea |
| 12 x 12 x 7    | 60112127  | 12 ea | 65112127  | 1 ea |
| 12 x 12 x 8    | 60112128  | 12 ea | 65112128  | 1 ea |
| 12 x 12 x 9    | 60112129  | 12 ea | 65112129  | 1 ea |
| 12 x 12 x 10   | 601121210 | 12 ea | 651121210 | 1 ea |
| 12 x 12 x 12   | 601121212 | 12 ea | 651121212 | 1 ea |
| 14 x 6 x 6     | 6011466   | 1 ea  | 6511466   | 1 ea |
| 14 x 6 x 7     | 6011467   | 1 ea  | 6511467   | 1 ea |
| 14 x 6 x 9     | 6011469   | 1 ea  | 6511469   | 1 ea |
| 14 x 8 x 8     | 6011488   | 1 ea  | 6511488   | 1 ea |
| 14 x 14 x 8    | 60114148  | 1 ea  | 65114148  | 1 ea |
| 14 x 14 x 9    | 60114149  | 1 ea  | 65114149  | 1 ea |
| 14 x 14 x 10   | 601141410 | 1 ea  | 651141410 | 1 ea |
| 14 x 14 x 12   | 601141412 | 1 ea  | 651141412 | 1 ea |
| 14 x 14 x 14   | 601141414 | 1 ea  | 651141414 | 1 ea |
| 16 x 6 x 8     | 6011668   | 1 ea  | 6511668   | 1 ea |
| 16 x 6 x 10    | 60116610  | 1 ea  | 65116610  | 1 ea |
| 16 x 8 x 8     | 6011688   | 1 ea  | 6511688   | 1 ea |
| 16 x 8 x 9     | 6011689   | 1 ea  | 6511689   | 1 ea |
| 16 x 8 x 10    | 60116810  | 1 ea  | 65116810  | 1 ea |
| 18 x 6 x 10    | 60118610  | 1 ea  | 65118610  | 1 ea |
| 18 x 8 x 10    | 60118810  | 1 ea  | 65118810  | 1 ea |
| 20 x 6 x 10    | 60120610  | 1 ea  | 65120610  | 1 ea |
| 24 x 6 x 10    | 60124610  | 1 ea  | 65124610  | 1 ea |
| 24 x 8 x 12    | 60124812  | 1 ea  |           |      |



**# 601 Register Box  
 w/Snap-Rail Flange**



**# 651 Register Box  
 w/o Snap-Rail Flange**

**602 DucTite® Register Box w/Snap Rail Flange**

DucTite® conforms to IRC M1601.3.1 which requires joints and seams to be "Substantially Airtight"



**# 602 DucTite® Register Box**  
**Uninsulated with Snap Rail Flange**

| Size in Inches | #602 P/N  | CTN   |
|----------------|-----------|-------|
| 6 x 6 x 4      | 602664    | 45 ea |
| 6 x 6 x 5      | 602665    | 45 ea |
| 6 x 6 x 6      | 602666    | 45 ea |
| 8 x 4 x 4      | 602844    | 45 ea |
| 8 x 6 x 5      | 602865    | 30 ea |
| 8 x 6 x 6      | 602866    | 30 ea |
| 8 x 8 x 6      | 602886    | 25 ea |
| 8 x 8 x 7      | 602887    | 25 ea |
| 8 x 8 x 8      | 602888    | 25 ea |
| 10 x 6 x 5     | 6021065   | 25 ea |
| 10 x 6 x 6     | 6021066   | 25 ea |
| 10 x 8 x 6     | 6021086   | 32 ea |
| 10 x 8 x 7     | 6021087   | 32 ea |
| 10 x 8 x 8     | 6021088   | 32 ea |
| 10 x 10 x 7    | 60210107  | 24 ea |
| 10 x 10 x 8    | 60210108  | 24 ea |
| 10 x 10 x 9    | 60210109  | 24 ea |
| 10 x 10 x 10   | 602101010 | 24 ea |
| 12 x 8 x 7     | 6021287   | 24 ea |
| 12 x 8 x 8     | 6021288   | 24 ea |
| 12 x 12 x 8    | 60212128  | 14 ea |
| 12 x 12 x 9    | 60212129  | 14 ea |
| 12 x 12 x 10   | 602121210 | 14 ea |
| 12 x 12 x 12   | 602121212 | 14 ea |

**602R6 DucTite® Insulator**  
**Register Box**  
**with Snap Rail Flange**

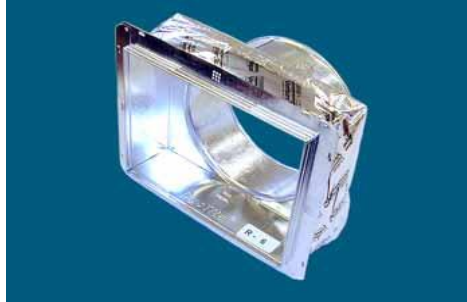


**602 DucTite® Register Box**  
**with R-6 DucTite® Insulator**  
 (Green R-6 EPS Insulator)

‡ R6 Duct Wrap

| Size in Inches | #602R6 P/N  | CTN   |
|----------------|-------------|-------|
| 6 x 6 x 4      | 602R6664    | 24 ea |
| 6 x 6 x 5      | 602R6665    | 24 ea |
| 6 x 6 x 6      | 602R6666    | 24 ea |
| 8 x 4 x 4      | 602R6844    | 40 ea |
| 8 x 6 x 5 ‡    | 602R6865    | 24 ea |
| 8 x 6 x 6 ‡    | 602R6866    | 24 ea |
| 8 x 8 x 6      | 602R6886    | 24 ea |
| 8 x 8 x 7      | 602R6887    | 24 ea |
| 8 x 8 x 8      | 602R6888    | 24 ea |
| 10 x 6 x 5     | 602R61065   | 27 ea |
| 10 x 6 x 6     | 602R61066   | 27 ea |
| 10 x 8 x 6     | 602R61086   | 24 ea |
| 10 x 8 x 7     | 602R61087   | 24 ea |
| 10 x 8 x 8     | 602R61088   | 24 ea |
| 10 x 10 x 7    | 602R610107  | 16 ea |
| 10 x 10 x 8    | 602R610108  | 16 ea |
| 10 x 10 x 9    | 602R610109  | 16 ea |
| 10 x 10 x 10   | 602R6101010 | 16 ea |
| 12 x 8 x 7 ‡   | 602R61287   | 24 ea |
| 12 x 8 x 8 ‡   | 602R61288   | 24 ea |
| 12 x 12 x 8    | 602R612128  | 12 ea |
| 12 x 12 x 9    | 602R612129  | 12 ea |
| 12 x 12 x 10   | 602R6121210 | 12 ea |
| 12 x 12 x 12   | 602R6121212 | 12 ea |

**602R8 DucTite®  
Register Box w/R8 Duct Wrap  
w/Snap Rail Flange**



**# 602R8 DucTite® w/R-8 Duct Wrap**

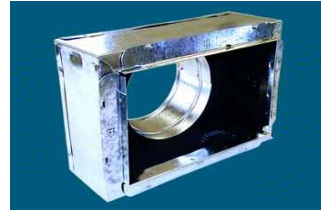
| Size in Inches | #602R8 P/N  | CTN   |
|----------------|-------------|-------|
| 8 x 4 x 4      | 602R8844    | 24 ea |
| 8 x 6 x 5      | 602R8865    | 24 ea |
| 8 x 6 x 6      | 602R8866    | 24 ea |
| 10 x 6 x 5     | 602R81065   | 20 ea |
| 10 x 6 x 6     | 602R81066   | 20 ea |
| 10 x 8 x 6     | 602R81086   | 24 ea |
| 10 x 8 x 7     | 602R81087   | 24 ea |
| 10 x 8 x 8     | 602R81088   | 24 ea |
| 10 x 10 x 7    | 602R810107  | 24 ea |
| 10 x 10 x 8    | 602R810108  | 24 ea |
| 10 x 10 x 9    | 602R810109  | 24 ea |
| 10 x 10 x 10   | 602R8101010 | 24 ea |
| 12 x 8 x 7     | 602R81287   | 24 ea |
| 12 x 8 x 8     | 602R81288   | 24 ea |
| 12 x 12 x 8    | 602R812128  | 16 ea |
| 12 x 12 x 9    | 602R812129  | 16 ea |
| 12 x 12 x 10   | 602R8121210 | 16 ea |

**640 & 641 INSULATED R-4 REGISTER BOXES (Standard Sizes)**

Lined with 1" Ductliner providing R-Factor of R-4



**# 640 Register Box Insulated R-4,  
 4" Tall Without Snap-Rail Flange**



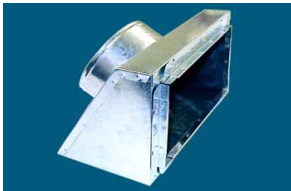
**# 641 Register Box Insulated R-4,  
 4" Tall With Snap-Rail Flange**

| Size in Inches | #640 P/N  | CTN   | #641 P/N  | CTN   |
|----------------|-----------|-------|-----------|-------|
| 6 x 6 x 6      | 640666    | 15 ea | 641666    | 15 ea |
| 8 x 4 x 4      | 640844    | 24 ea | 641844    | 24 ea |
| 8 x 4 x 5      | 640845    | 24 ea | 641845    | 24 ea |
| 8 x 4 x 6      | 640846    | 20 ea | 641846    | 1 ea  |
| 8 x 6 x 5      |           |       | 641865    | 26 ea |
| 8 x 6 x 6      | 640866    | 26 ea | 641866    | 26 ea |
| 8 x 8 x 6      | 640886    | 24 ea | 641886    | 24 ea |
| 8 x 8 x 7      | 640887    | 24 ea | 641887    | 24 ea |
| 10 x 4 x 5     |           |       | 6411045   | 1 ea  |
| 10 x 4 x 6     |           |       | 6411046   | 1 ea  |
| 10 x 6 x 5     | 6401065   | 20 ea |           |       |
| 10 x 6 x 6     | 6401066   | 20 ea | 6411066   | 20 ea |
| 10 x 6 x 7     | 6401067   | 25 ea | 6411067   | 25 ea |
| 10 x 6 x 8     | 6401068   | 25 ea | 6411068   | 25 ea |
| 10 x 8 x 6     | 6401086   | 20 ea | 6411086   | 1 ea  |
| 10 x 8 x 7     | 6401087   | 20 ea | 6411087   | 20 ea |
| 10 x 8 x 8     | 6401088   | 20 ea | 6411088   | 20 ea |
| 10 x 10 x 7    | 64010107  | 24 ea | 64110107  | 22 ea |
| 10 x 10 x 8    | 64010108  | 24 ea | 64110108  | 22 ea |
| 10 x 10 x 9    | 64010109  | 22 ea | 64110109  | 22 ea |
| 12 x 6 x 6     | 6401266   | 23 ea | 6411266   | 23 ea |
| 12 x 6 x 7     | 6401267   | 23 ea | 6411267   | 23 ea |
| 12 x 6 x 8     | 6401268   | 23 ea | 6411268   | 23 ea |
| 12 x 8 x 8     | 6401288   | 24 ea | 6411288   | 24 ea |
| 12 x 8 x 9     | 6401289   | 24 ea | 6411289   | 24 ea |
| 12 x 12 x 8    | 64012128  | 16 ea | 64112128  | 16 ea |
| 12 x 12 x 9    | 64012129  | 16 ea | 64112129  | 12 ea |
| 12 x 12 x 10   | 640121210 | 16 ea | 641121210 | 12 ea |
| 14 x 6 x 6     | 6401466   | 22 ea | 6411466   | 20 ea |
| 14 x 6 x 7     | 6401467   | 22 ea | 6411467   | 20 ea |
| 14 x 6 x 8     | 6401468   | 20 ea | 6411468   | 20 ea |
| 14 x 6 x 9     | 6401469   | 22 ea | 6411469   | 1 ea  |
| 14 x 8 x 8     | 6401488   | 14 ea | 6411488   | 14 ea |
| 14 x 8 x 9     | 6401489   | 14 ea | 6411489   | 14 ea |
| 14 x 14 x 8    | 64014148  | 10 ea | 64114148  | 10 ea |
| 14 x 14 x 9    | 64014149  | 10 ea |           |       |
| 14 x 14 x 10   | 640141410 | 10 ea | 641141410 | 10 ea |
| 16 x 6 x 9     | 6401669   | 18 ea | 6411669   | 18 ea |



**R-2 & R-4 INSULATED REGISTER BOXES**

½" Ductliner R-Factor of R-2 <> 1" Ductliner R-Factor of R-4



**# 643 Slant Top Register Box  
 Insulated R-2  
 w/Snap-Rail Flange**

| Size in Inches | #643 P/N  | CTN   |
|----------------|-----------|-------|
| 6 x 6 x 4      | 643664    | 24 ea |
| 8 x 4 x 5      | 643845    | 24 ea |
| 8 x 8 x 6      | 643886    | 20 ea |
| 10 x 6 x 6     | 6431066   | 20 ea |
| 10 x 8 x 6     | 6431086   | 16 ea |
| 10 x 8 x 7     | 6431087   | 16 ea |
| 10 x 8 x 8     | 6431088   | 16 ea |
| 10 x 8 x 9     | 6431089   | 20 ea |
| 10 x 10 x 8    | 64310108  | 16 ea |
| 12 x 6 x 7     | 6431267   | 16 ea |
| 12 x 6 x 8     | 6431268   | 15 ea |
| 12 x 8 x 8     | 6431288   | 16 ea |
| 12 x 12 x 10   | 643121210 | 10 ea |
| 14 x 6 x 8     | 6431468   | 14 ea |
| 14 x 8 x 9     | 6431489   | 12 ea |
| 16 x 6 x 9     | 6431669   | 12 ea |



**# 648 Register Box  
 9" Tall w/Side Outlet  
 Insulated R-4**

| Size in Inches | #648 P/N  | CTN  |
|----------------|-----------|------|
| 6 x 6 x 6      | 648666    | 1 ea |
| 8 x 4 x 4      | 648844    | 1 ea |
| 8 x 4 x 5      | 648845    | 1 ea |
| 8 x 8 x 6      | 648886    | 1 ea |
| 8 x 8 x 7      | 648887    | 1 ea |
| 10 x 6 x 6     | 6481066   | 1 ea |
| 10 x 6 x 7     | 6481067   | 1 ea |
| 10 x 6 x 8     | 6481068   | 1 ea |
| 10 x 8 x 6     | 6481086B  | 1 ea |
| 10 x 8 x 7     | 6481087   | 1 ea |
| 10 x 8 x 8     | 6481088   | 1 ea |
| 10 x 10 x 7    | 64810107  | 1 ea |
| 10 x 10 x 8    | 64810108  | 1 ea |
| 10 x 10 x 9    | 64810109  | 1 ea |
| 12 x 6 x 6     | 6481266   | 1 ea |
| 12 x 6 x 7     | 6481267   | 1 ea |
| 12 x 6 x 8     | 6481268   | 1 ea |
| 12 x 8 x 8     | 6481288   | 1 ea |
| 12 x 8 x 9     | 6481289   | 1 ea |
| 12 x 12 x 8    | 64812128  | 1 ea |
| 12 x 12 x 9    | 64812129  | 1 ea |
| 12 x 12 x 10   | 648121210 | 1 ea |
| 14 x 6 x 8     | 6481468   | 1 ea |
| 14 x 8 x 9     | 6481489   | 1 ea |
| 16 x 6 x 9     | 6481669   | 1 ea |



**# 645 Adjustable  
 45° Collar,  
 w/Snap-Rail  
 Flange,  
 Insulated R-4**

| Size in Inches | #645 P/N  | CTN   |
|----------------|-----------|-------|
| 6 x 6 x 4      | 645664    | 18 ea |
| 8 x 4 x 5      | 645845    | 20 ea |
| 8 x 8 x 6      | 645886    | 18 ea |
| 10 x 6 x 6     | 6451066   | 18 ea |
| 10 x 8 x 6     | 6451086   | 16 ea |
| 10 x 8 x 7     | 6451087   | 16 ea |
| 10 x 8 x 8     | 6451088   | 16 ea |
| 10 x 10 x 8    | 64510108  | 12 ea |
| 12 x 6 x 7     | 6451267   | 15 ea |
| 12 x 6 x 8     | 6451268   | 1 ea  |
| 12 x 8 x 8     | 6451288   | 10 ea |
| 12 x 12 x 10   | 645121210 | 10 ea |
| 14 x 6 x 8     | 6451468   | 15 ea |
| 14 x 8 x 9     | 6451489   | 10 ea |

**649 & 650 INSULATED R-4 REGISTER BOXES**

1" Ductliner R-Factor of R-4

**# 649 Insulated R-4**



**# 649 Register Box**  
**9" Tall w/o Collar**  
**Insulated R-4**

| Size in Inches | #649 P/N | CTN   |
|----------------|----------|-------|
| 6 x 6          | 64966    | 1 ea  |
| 8 x 4          | 64984    | 24 ea |
| 8 x 6          | 64986    | 1 ea  |
| 8 x 8          | 64988    | 1 ea  |
| 10 x 6         | 649106   | 16 ea |
| 10 x 8         | 649108   | 12 ea |
| 10 x 10        | 6491010  | 1 ea  |
| 12 x 6         | 649126   | 14 ea |
| 12 x 8         | 649128   | 1 ea  |
| 12 x 12        | 6491212  | 6 ea  |
| 14 x 6         | 649146   | 9 ea  |
| 14 x 8         | 649148   | 1 ea  |
| 14 x 14        | 6491414  | 1 ea  |
| 16 x 6         | 649166   | 1 ea  |

**# 650 Insulated R-4**

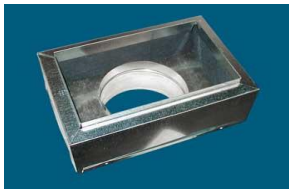


**# 650 Register Box**  
**9" Tall w/End Outlet**  
**Insulated R-4**

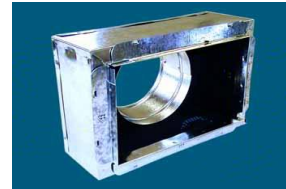
| Size in Inches | #650     | CTN  |
|----------------|----------|------|
| 8 x 4 x 4      | 650844   | 1 ea |
| 8 x 4 x 5      | 650845   | 1 ea |
| 10 x 4 x 6     | 6501046  | 1 ea |
| 10 x 6 x 6     | 6501066  | 1 ea |
| 10 x 6 x 7     | 6501067  | 1 ea |
| 10 x 8 x 6     | 6501086B | 1 ea |
| 10 x 8 x 8     | 6501088  | 1 ea |
| 10 x 10 x 7    | 65010107 | 1 ea |
| 10 x 10 x 8    | 65010108 | 1 ea |
| 12 x 6 x 7     | 6501267  | 1 ea |
| 12 x 6 x 8     | 6501268  | 1 ea |
| 12 x 8 x 8     | 6501288  | 1 ea |
| 12 x 12 x 8    | 65012128 | 1 ea |
| 14 x 6 x 8     | 6501468  | 1 ea |
| 14 x 8 x 9     | 6501489  | 1 ea |
| 16 x 6 x 9     | 6501669  | 1 ea |

**640R6 & 641R6 INSULATED REGISTER BOXES (Standard Sizes)**

Lined with 1½" Ductliner providing R-Factor of R-6



**# 640R6 Register Box  
 4" Tall Without  
 Snap-Rail Flange**

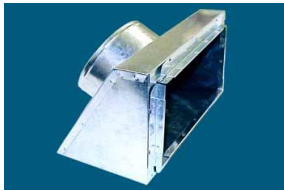


**# 641R6 Register Box  
 4" Tall With  
 Snap-Rail Flange**

| Size in Inches | # 640R6 Insulated |       | # 641R6 Insulated |       |
|----------------|-------------------|-------|-------------------|-------|
|                | #640R6 P/N        | CTN   | #641R6 P/N        | CTN   |
| 6 x 6 x 6      | 640R6666          | 15 ea | 641R6666          | 15 ea |
| 8 x 4 x 4      | 640R6844          | 24 ea | 641R6844          | 24 ea |
| 8 x 4 x 5      | 640R6845          | 24 ea | 641R6845          | 24 ea |
| 8 x 4 x 6      | 640R6846          | 20 ea | 641R6846          | 24 ea |
| 8 x 6 x 5      | 640R6865          | 26 ea | 641R6865          | 1 ea  |
| 8 x 6 x 6      | 640R6866          | 26 ea | 641R6866          | 1 ea  |
| 8 x 8 x 6      | 640R6886          | 24 ea | 641R6886          | 24 ea |
| 8 x 8 x 7      | 640R6887          | 24 ea | 641R6887          | 24 ea |
| 10 x 6 x 6     | 640R61066         | 20 ea | 641R61066         | 20 ea |
| 10 x 6 x 7     | 640R61067         | 25 ea | 641R61067         | 25 ea |
| 10 x 6 x 8     | 640R61068         | 25 ea | 641R61068         | 1 ea  |
| 10 x 8 x 6     | 640R61086         | 20 ea |                   |       |
| 10 x 8 x 7     | 640R61087         | 20 ea | 641R61087         | 20 ea |
| 10 x 8 x 8     | 640R61088         | 20 ea | 641R61088         | 20 ea |
| 10 x 10 x 7    | 640R610107        | 24 ea | 641R610107        | 22 ea |
| 10 x 10 x 8    | 640R610108        | 24 ea | 641R610108        | 22 ea |
| 10 x 10 x 9    | 640R610109        | 22 ea | 641R610109        | 22 ea |
| 12 x 6 x 6     | 640R61266         | 23 ea | 641R61266         | 23 ea |
| 12 x 6 x 7     | 640R61267         | 23 ea | 641R61267         | 23 ea |
| 12 x 6 x 8     | 640R61268         | 23 ea | 641R61268         | 23 ea |
| 12 x 8 x 8     | 640R61288         | 24 ea | 641R61288         | 24 ea |
| 12 x 8 x 9     | 640R61289         | 24 ea | 641R61289         | 24 ea |
| 12 x 12 x 8    | 640R612128        | 16 ea | 641R612128        | 12 ea |
| 12 x 12 x 9    | 640R612129        | 16 ea | 641R612129        | 12 ea |
| 12 x 12 x 10   | 640R6121210       | 16 ea | 641R6121210       | 12 ea |
| 14 x 6 x 7     | 640R61467         | 22 ea |                   |       |
| 14 x 6 x 8     | 640R61468         | 18 ea | 641R61468         | 20 ea |
| 14 x 6 x 9     | 640R61469         | 18 ea | 641R61469         | 1 ea  |
| 14 x 8 x 8     | 640R61488         | 14 ea | 641R61488         | 14 ea |
| 14 x 8 x 9     | 640R61489         | 14 ea | 641R61489         | 14 ea |
| 14 x 14 x 8    | 640R614148        | 10 ea |                   |       |
| 14 x 14 x 9    | 640R614149        | 10 ea |                   |       |
| 14 x 14 x 10   | 640R6141410       | 10 ea | 641R6141410       | 10 ea |
| 16 x 6 x 9     | 640R61669         | 18 ea | 641R61669         | 18 ea |

**R6 INSULATED REGISTER BOXES**

Lined with 1½" Ductliner providing R-Factor of R-6



**# 643R6 Slant Top Register Box w/Snap-Rail Flange**

| Size in Inches | #643 P/N    | CTN   |
|----------------|-------------|-------|
| 6 x 6 x 4      | 643R6664    | 24 ea |
| 8 x 4 x 5      | 643R6845    | 24 ea |
| 8 x 8 x 6      | 643R6886    | 20 ea |
| 10 x 6 x 6     | 643R61066   | 20 ea |
| 10 x 8 x 6     | 643R61086   | 16 ea |
| 10 x 8 x 7     | 643R61087   | 16 ea |
| 10 x 8 x 8     | 643R61088   | 16 ea |
| 10 x 8 x 9     | 643R61089   | 20 ea |
| 10 x 10 x 8    | 643R610108  | 16 ea |
| 12 x 6 x 7     | 643R61267   | 16 ea |
| 12 x 6 x 8     | 643R61268   | 15 ea |
| 12 x 8 x 8     | 643R61288   | 16 ea |
| 12 x 12 x 10   | 643R6121210 | 10 ea |
| 14 x 6 x 8     | 643R61468   | 14 ea |
| 14 x 8 x 9     | 643R61489   | 12 ea |
| 16 x 6 x 9     | 643R61669   | 12 ea |



**# 648R6 Register Box 9" Tall w/Side Outlet**

| Size in Inches | #648R6 P/N  | CTN  |
|----------------|-------------|------|
| 6 x 6 x 6      | 648R6666    | 1 ea |
| 8 x 4 x 4      | 648R6844    | 1 ea |
| 8 x 4 x 5      | 648R6845    | 1 ea |
| 8 x 6 x 5      | 648R6865    | 1 ea |
| 8 x 6 x 6      | 648R6866    | 1 ea |
| 8 x 8 x 6      | 648R6886    | 1 ea |
| 8 x 8 x 7      | 648R6887    | 1 ea |
| 10 x 6 x 6     | 648R61066   | 1 ea |
| 10 x 6 x 7     | 648R61067   | 1 ea |
| 10 x 8 x 7     | 648R61087   | 1 ea |
| 10 x 8 x 8     | 648R61088   | 1 ea |
| 10 x 10 x 7    | 648R610107  | 1 ea |
| 10 x 10 x 8    | 648R610108  | 1 ea |
| 10 x 10 x 9    | 648R610109  | 1 ea |
| 12 x 6 x 7     | 648R61267   | 1 ea |
| 12 x 6 x 8     | 648R61268   | 1 ea |
| 12 x 8 x 8     | 648R61288   | 1 ea |
| 12 x 8 x 9     | 648R61289   | 1 ea |
| 12 x 12 x 8    | 648R612128  | 1 ea |
| 12 x 12 x 9    | 648R612129  | 1 ea |
| 12 x 12 x 10   | 648R6121210 | 1 ea |
| 14 x 6 x 8     | 648R61468   | 1 ea |
| 14 x 8 x 8     | 648R61488   | 1 ea |
| 14 x 8 x 9     | 648R61489   | 1 ea |
| 16 x 6 x 9     | 648R61669   | 1 ea |



**# 645R6 Adjustable 45° Collar, w/Snap-Rail Flange**

| Size in Inches | #645R6 P/N  | CTN   |
|----------------|-------------|-------|
| 6 x 6 x 4      | 645R6664    | 18 ea |
| 8 x 4 x 5      | 645R6845    | 20 ea |
| 8 x 8 x 6      | 645R6886    | 18 ea |
| 10 x 6 x 6     | 645R61066   | 18 ea |
| 10 x 8 x 6     | 645R61086   | 16 ea |
| 10 x 8 x 7     | 645R61087   | 16 ea |
| 10 x 8 x 8     | 645R61088   | 16 ea |
| 10 x 10 x 8    | 645R610108  | 12 ea |
| 12 x 6 x 7     | 645R61267   | 15 ea |
| 12 x 6 x 8     | 645R61268   | 15 ea |
| 12 x 8 x 8     | 645R61288   | 10 ea |
| 12 x 12 x 10   | 645R6121210 | 10 ea |
| 14 x 6 x 8     | 645R61468   | 15 ea |
| 14 x 8 x 9     | 645R61489   | 10 ea |

**649R6 & 650R6 INSULATED REGISTER BOXES**

Lined with 1½" Ductliner providing R-Factor of R-6

**# 649R6 Insulated**

| Size in Inches | #649R6 P/N | CTN   |
|----------------|------------|-------|
| 6 x 6          | 649R666    | 1 ea  |
| 8 x 4          | 649R684    | 24 ea |
| 8 x 6          | 649R686    | 1 ea  |
| 8 x 8          | 649R688    | 1 ea  |
| 10 x 6         | 649R6106   | 16 ea |
| 10 x 8         | 649R6108   | 12 ea |
| 10 x 10        | 649R61010  | 1 ea  |
| 12 x 6         | 649R6126   | 14 ea |
| 12 x 8         | 649R6128   | 1 ea  |
| 12 x 12        | 649R61212  | 6 ea  |
| 14 x 6         | 649R6146   | 9 ea  |
| 14 x 8         | 649R6148   | 1 ea  |
| 14 x 14        | 649R61414  | 1 ea  |
| 16 x 6         | 649R6166   | 1 ea  |



**# 649R6 Register Box  
 9" Tall w/o Collar**

**# 650R6 Insulated**

| Size in Inches | #650R6     | CTN  |
|----------------|------------|------|
| 8 x 4 x 4      | 650R6844   | 1 ea |
| 8 x 4 x 5      | 650R6845   | 1 ea |
| 10 x 6 x 6     | 650R61066  | 1 ea |
| 10 x 6 x 7     | 650R61067  | 1 ea |
| 10 x 8 x 6     | 650R61086  | 1 ea |
| 10 x 8 x 8     | 650R61088  | 1 ea |
| 10 x 10 x 7    | 650R610107 | 1 ea |
| 10 x 10 x 8    | 650R610108 | 1 ea |
| 12 x 6 x 7     | 650R61267  | 1 ea |
| 12 x 6 x 8     | 650R61268  | 1 ea |
| 12 x 8 x 8     | 650R61288  | 1 ea |
| 14 x 6 x 8     | 650R61468  | 1 ea |
| 14 x 8 x 9     | 650R61489  | 1 ea |
| 16 x 6 x 9     | 650R61669  | 1 ea |



**# 650R6 Register Box  
 9" Tall w/End Outlet**

**800 WYES**

| Size in Inches | #800 P/N  | CTN   |
|----------------|-----------|-------|
| 3 x 3 x 3      | 800333    | 1 ea  |
| 4 x 3 x 3      | 800433    | 25 ea |
| 4 x 4 x 4      | 800444    | 1 ea  |
| 5 x 4 x 4      | 800544    | 25 ea |
| 6 x 4 x 4      | 800644    | 1 ea  |
| 6 x 5 x 4      | 800654    | 12 ea |
| 6 x 6 x 4      | 800664    | 1 ea  |
| 7 x 5 x 5      | 800755    | 8 ea  |
| 7 x 6 x 5      | 800765    | 12 ea |
| 7 x 6 x 6      | 800766    | 1 ea  |
| 7 x 7 x 4      | 800774    | 1 ea  |
| 7 x 7 x 7      | 800777    | 1 ea  |
| 8 x 6 x 4      | 800864    | 1 ea  |
| 8 x 6 x 5      | D® 800865 | 6 ea  |
| 8 x 6 x 6      | D® 800866 | 16 ea |
| 8 x 7 x 4      | 800874    | 1 ea  |
| 8 x 7 x 5      | D® 800875 | 16 ea |
| 8 x 7 x 6      | D® 800876 | 8 ea  |
| 8 x 7 x 7      | 800877    | 1 ea  |
| 8 x 8 x 5      | 800885    | 1 ea  |
| 8 x 8 x 6      | 800886    | 1 ea  |
| 8 x 8 x 8      | D® 800888 | 1 ea  |
| 9 x 6 x 5      | 800965    | 1 ea  |
| 9 x 6 x 6      | 800966    | 1 ea  |
| 9 x 7 x 5      | D® 800975 | 5 ea  |
| 9 x 7 x 6      | D® 800976 | 12 ea |
| 9 x 7 x 7      | D® 800977 | 12 ea |
| 9 x 8 x 4      | 800984    | 1 ea  |
| 9 x 8 x 5      | D® 800985 | 12 ea |
| 9 x 8 x 6      | D® 800986 | 12 ea |
| 9 x 8 x 7      | D® 800987 | 6 ea  |

| Size in Inches | #800 P/N     | CTN  |
|----------------|--------------|------|
| 9 x 8 x 8      | 800988       | 1 ea |
| 9 x 9 x 5      | 800995       | 1 ea |
| 9 x 9 x 8      | 800998       | 1 ea |
| 9 x 9 x 9      | 800999       | 1 ea |
| 10 x 6 x 6     | 8001066      | 1 ea |
| 10 x 7 x 7     | 8001077      | 1 ea |
| 10 x 8 x 5     | 8001085      | 1 ea |
| 10 x 8 x 6     | D® 8001086   | 8 ea |
| 10 x 8 x 7     | D® 8001087   | 9 ea |
| 10 x 8 x 8     | D® 8001088   | 9 ea |
| 10 x 9 x 5     | D® 8001095   | 6 ea |
| 10 x 9 x 6     | D® 8001096   | 9 ea |
| 10 x 9 x 7     | D® 8001097   | 9 ea |
| 10 x 9 x 8     | D® 8001098   | 8 ea |
| 10 x 9 x 9     | 8001099      | 1 ea |
| 10 x 10 x 6    | 80010106     | 1 ea |
| 10 x 10 x 8    | 80010108     | 1 ea |
| 10 x 10 x 10   | 800101010    | 1 ea |
| 12 x 8 x 8     | D® 8001288   | 6 ea |
| 12 x 9 x 7     | 8001297      | 1 ea |
| 12 x 9 x 8     | D® 8001298   | 6 ea |
| 12 x 9 x 9     | D® 8001299   | 6 ea |
| 12 x 10 x 6    | D® 80012106  | 6 ea |
| 12 x 10 x 7    | D® 80012107  | 6 ea |
| 12 x 10 x 8    | D® 80012108  | 6 ea |
| 12 x 10 x 9    | D® 80012109  | 6 ea |
| 12 x 10 x 10   | D® 800121010 | 4 ea |
| 12 x 12 x 6    | 80012126     | 1 ea |
| 12 x 12 x 8    | 80012128     | 1 ea |
| 12 x 12 x 10   | 800121210    | 1 ea |
| 12 x 12 x 12   | 800121212    | 1 ea |
| 14 x 8 x 8     | 8001488      | 1 ea |
| 14 x 10 x 9    | 80014109     | 4 ea |
| 14 x 10 x 10   | 800141010    | 4 ea |
| 14 x 12 x 6    | 80014126     | 1 ea |
| 14 x 12 x 7    | 80014127     | 1 ea |
| 14 x 12 x 8    | 80014128     | 4 ea |
| 14 x 12 x 9    | 80014129     | 4 ea |
| 14 x 12 x 10   | 800141210    | 4 ea |
| 14 x 12 x 12   | 800141212    | 3 ea |
| 14 x 14 x 8    | 80014148     | 1 ea |
| 14 x 14 x 10   | 800141410    | 1 ea |
| 14 x 14 x 12   | 800141412    | 1 ea |
| 14 x 14 x 14   | 800141414    | 1 ea |
| 16 x 12 x 10   | 800161210    | 1 ea |
| 16 x 12 x 12   | 800161212    | 1 ea |

**D® = Available in DucTite® Factory Sealed Version**



**Extra Charge For Second Branch:**

4" thru 12"

14"

16"

**WYE Body Gauge**

4" -12" 30 ga

14"-18" 28 ga

20"-24" 26 ga

**Some sizes may be factory sealed DucTite Wyes if ordered from North Fort Worth.**



**800 WYES (Cont'd.)**

| Size in Inches | #800 P/N  | CTN  | Size in Inches | #800 P/N  | CTN  |
|----------------|-----------|------|----------------|-----------|------|
| 16 x 14 x 6    | 80016146  | 1 ea | 20 x 16 x 14   | 800201614 | 1 ea |
| 16 x 14 x 8    | 80016148  | 1 ea | 20 x 16 x 16   | 800201616 | 1 ea |
| 16 x 14 x 9    | 80016149  | 1 ea | 20 x 18 x 14   | 800201814 | 1 ea |
| 16 x 14 x 10   | 800161410 | 1 ea | 20 x 18 x 16   | 800201816 | 1 ea |
| 16 x 14 x 12   | 800161412 | 1 ea | 20 x 20 x 14   | 800202014 | 1 ea |
| 16 x 14 x 14   | 800161414 | 1 ea | 20 x 20 x 16   | 800202016 | 1 ea |
| 16 x 16 x 12   | 800161612 | 1 ea | 22 x 20 x 14   | 800222014 | 1 ea |
| 16 x 16 x 14   | 800161614 | 1 ea | 22 x 20 x 16   | 800222016 | 1 ea |
| 16 x 16 x 16   | 800161616 | 1 ea | 22 x 22 x 14   | 800222214 | 1 ea |
| 18 x 12 x 12   | 800181212 | 1 ea | 24 x 18 x 18   | 800241818 | 1 ea |
| 18 x 14 x 14   | 800181414 | 1 ea | 24 x 20 x 16   | 800242016 | 1 ea |
| 18 x 16 x 12   | 800181612 | 1 ea | 24 x 24 x 12   | 800242412 | 1 ea |
| 18 x 16 x 14   | 800181614 | 1 ea |                |           |      |
| 18 x 16 x 16   | 800181616 | 1 ea |                |           |      |
| 18 x 18 x 14   | 800181814 | 1 ea |                |           |      |
| 18 x 18 x 18   | 800181818 | 1 ea |                |           |      |

**FLOW THROUGH BOOT**

Non-stock / Non-returnable

7" to 14" on large end  
 Size = Large end x small end  
 then register boot size

**Call for quote**

**# 860R BOOT  
 w/Snap-Rail Flange**



**900 TEES**

Non-stock / Non-returnable

Tees are shipped Loose, 1 ea

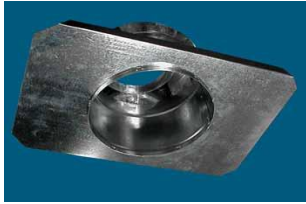


| Size in Inches* | #900 P/N |
|-----------------|----------|
| 3 x 3 x 3       | 9003     |
| 4 x 4 x 4       | 9004     |
| 4 x ? x ?       | 900S4    |
| 5 x 5 x 5       | 9005     |
| 5 x ? x ?       | 900S5    |
| 6 x 6 x 6       | 9006     |
| 6 x ? x ?       | 900S6    |
| 7 x 7 x 7       | 9007     |
| 7 x ? x ?       | 900S7    |
| 8 x 8 x 8       | 9008     |
| 8 x ? x ?       | 900S8    |
| 9 x 9 x 9       | 9009     |
| 9 x ? x ?       | 900S9    |

| Size in Inches* | #900 P/N |
|-----------------|----------|
| 10 x 10 x 10    | 90010    |
| 10 x ? x ?      | 900S10   |
| 12 x 12 x 12    | 90012    |
| 12 x ? x ?      | 900S12   |
| 14 x 14 x 14    | 90014    |
| 14 x ? x ?      | 900S14   |
| 16 x 16 x 16    | 90016    |
| 16 x ? x ?      | 900S16   |
| 18 x 18 x 18    | 90018    |
| 18 x ? x ?      | 900S18   |
| 20 x 20 x 20    | 90020    |
| 20 x ? x ?      | 900S20   |

\* Specify Size(s) on "?"

**ROUND CEILING DROPS**



**# 690 Round Ceiling Drop Without Damper**

| Size | #690 P/N | CTN   |
|------|----------|-------|
| 6"   | 6906     | 12 ea |
| 8"   | 6908     | 16 ea |
| 10"  | 69010    | 14 ea |

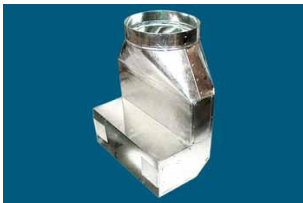


**# 690D Round Ceiling Drop With Damper**

| Size | #690D P/N | CTN   |
|------|-----------|-------|
| 6"   | 690D6     | 14 ea |
| 8"   | 690D8     | 12 ea |
| 10"  | 690D10    | 16 ea |

**STACKHEAD BOOT**

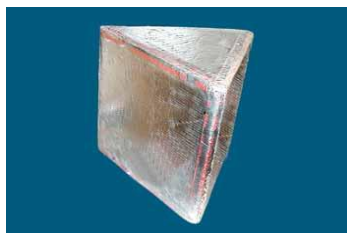
**# 770 Stackhead With Square-To-Round**



| Size in Inches | #770 P/N |
|----------------|----------|
| 8 x 4          | 77084    |
| 10 x 6         | 770106   |
| 12 x 6         | 770126   |
| 14 x 6         | 770146   |
| 14 x 8         | 770148   |

All Stackheads Are Shipped Loose, 1 ea

**DUCTBOARD PRODUCTS**



**# 800 DBT Ductboard Triangle**

**Ductboard Triangles**

| Size * | # 800DBT-R4 | # 800DBT-R6   | CTN  |
|--------|-------------|---------------|------|
|        | #800DBT P/N | #800DBTR6 P/N |      |
| 8"     | 800DBT8     | 800DBTR68     | 6 ea |
| 10"    | 800DBT10    | 800DBTR610    | 6 ea |
| 12"    | 800DBT12    | 800DBTR612    | 6 ea |
| 14"    | 800DBT14    | 800DBTR614    | 6 ea |
| 16"    | 800DBT16    | 800DBTR616    | 6 ea |
| 18"    | 800DBT18    | 800DBTR618    | 6 ea |

\* Ductboard Triangle Measurements Are Inside Dimensions



**MP-DBP Lay-In Filter Grille Plenum**

**Lay-In Filter Grille Plenum**

| Size in Inches **          | DBP P/N       | CTN  |
|----------------------------|---------------|------|
| 20 x 20 x 6 - R4 Ductboard | MP-DBP20206   | 1 ea |
| 20 x 20 x 6 - R6 Ductboard | MP-DBP20206R6 | 1 ea |

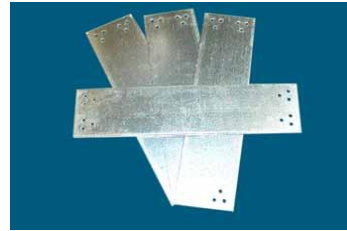
\*\* Lay-In Filter Grille Plenum Measurements Are Inside Dimensions



**MISCELLANEOUS ROUGH-IN PRODUCTS**

**12 Ga 12 Hole Notch Plates**

| Size in Inches | MP-NP P/N      | CTN   |
|----------------|----------------|-------|
| 3 x 6          | MP-NP361212-1  | 25 ea |
| 3 x 8          | MP-NP381212-1  | 25 ea |
| 3 x 9          | MP-NP391212-1  | 25 ea |
| 3 x 12         | MP-NP3121212-1 | 25 ea |
| 3 x 18         | MP-NP3181212-1 | 25 ea |



**Notch Plates - 12 Ga - 12 Hole**

**VENTING PRODUCTS**

**# 1402 Compressed Aluminum Flex Duct**

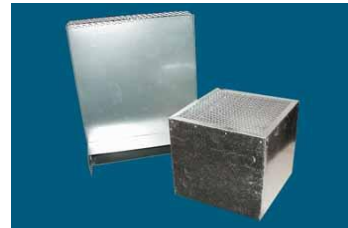
| Size - In. by Ft. | #1402 P/N | #/Box | Ft/Box |
|-------------------|-----------|-------|--------|
| 3" x 10'          | 14023     | 60    | 600    |
| 4" x 10'          | 14024     | 32    | 320    |
| 5" x 8'           | 14025     | 21    | 168    |
| 6" x 8'           | 14026     | 15    | 120    |
| 7" x 8'           | 14027     | 11    | 88     |
| 8" x 8'           | 14028     | 8     | 64     |
| 10" x 8'          | 140210    | 5     | 40     |

**# 1402 Compressed Aluminum Flex Duct**



**Combustion Air Vents**

| Size in Inches** | V-CAV P/N   | CTN  |
|------------------|-------------|------|
| 6 x 6            | V-CAV66     | 1 ea |
| 8 x 8            | V-CAV88     | 1 ea |
| 10 x 10          | V-CAV1010   | 1 ea |
| 10 x 20          | V-CAV1020   | 1 ea |
| 12 x 12          | V-CAV1212   | 1 ea |
| 14 x 10          | V-CAV1410   | 1 ea |
| 14 x 14          | V-CAV1414   | 1 ea |
| U.C.A.V.         | V-CAV1431/2 | 1 ea |



**Combustion Air Vents**

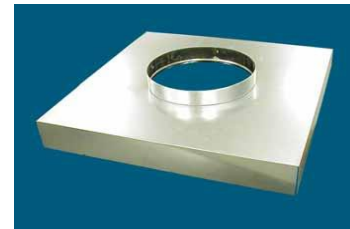
\*\* Other sizes available, price by multiplying \_\_\_\_\_ x Perimeter Inches and Add \_\_\_\_\_ (P/N V-CAVxx\*)

\* Specify Side Dimension on "x"

**Kruger Box**

**2" Deep Non-Insulated  
 Non-stock / Non-returnable**

| Size in Inches | MP-KB P/N   | CTN  |
|----------------|-------------|------|
| 6 x 6 x ?*     | MP-KB66?*   | 1 ea |
| 8 x 8 x ?*     | MP-KB88?*   | 1 ea |
| 10 x 10 x ?*   | MP-KB1010?* | 1 ea |
| 12 x 12 x ?*   | MP-KB1212?* | 1 ea |



**Kruger Box  
 2" Deep Non-Insulated**

\* Specify Collar Size on "?"

**VENTING PRODUCTS (Cont'd.)**



**Flush Mount Vents**

**Flush Mount & Wall Vents**

| Size | Description                     | Vent P/N |
|------|---------------------------------|----------|
| 4"   | Flush Mount Paintable, 26 Ga PG | V-SBLV4  |
| 4"   | Round 26 Ga Steel               | V-WV4    |
| 5"   | Round Alum.                     | V-WV5    |
| 6"   | Round Alum.                     | V-WV6    |
| 7"   | Round Alum.                     | V-WV7    |
| 7"   | Round Alum. wo/Collar w/Screen  | CP-VC7WV |
| 8"   | Round 26 Ga Steel               | V-WV8    |
| 10"  | Round 26 Ga Steel               | V-WV10   |
| 12"  | Round 26 Ga Steel               | V-WV12   |



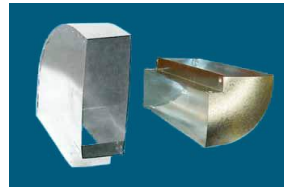
**Wall Vents**

**Wall Stack Duct**

| Size in Inches  | Wall Stack P/N |
|-----------------|----------------|
| 10 x 3¼ x 30    | V-WS1030       |
| 10 x 3¼ x 36    | V-WS1036       |
| 10 x 3¼ x 48    | V-WS1048       |
| 10 x 3¼ x 60    | V-WS1060       |
| 12 x 3¼ x 36    | V-WS1236       |
| 14 x 3¼ x 36    | V-WS1436       |
| 10 x 3¼ End Cap | V-WSEC1031/4   |
| 14 x 3¼ End Cap | V-WSEC1431/4   |

**10" x 3¼" Rectangle Elbows**

| Description     | Elbow P/N  |
|-----------------|------------|
| Long Way Elbow  | V-LE1031/4 |
| Short Way Elbow | V-SE31/410 |



**Long Way Elbow**

**Short Way Elbow**

**10" x 3¼" Aluminum Wall Vent w/Damper**

| Description | Vent P/N   |
|-------------|------------|
| Wall Vent   | V-WV1031/4 |



**10" x 3¼" Aluminum Wall Vent w/Damper**

**Slab and K&S Slab Vents**

| Size in Inches           | Description     | Vent P/N |
|--------------------------|-----------------|----------|
| 10 x 5 x 21 x 6" Collar  | Slab Vent       | V-SV     |
| 10 x 3¼ x 22 x 6" Collar | K & S Slab Vent | V-SVKS   |



**K & S Slab Vent 10" x 3¼" x 22" w/6" Collars**

**Slab Vent 10" x 5" x 21" w/6" Collars**

**10" x 3¼" # 201V Adapters**

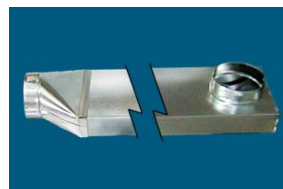
| Size in Inches | # 201V P/N  |
|----------------|-------------|
| 10 x 3¼ x 5    | 201V1031/45 |
| 10 x 3¼ x 6    | 201V1031/46 |
| 10 x 3¼ x 7    | 201V1031/47 |
| 10 x 3¼ x 8    | 201V1031/48 |



**# 201V Adapter 10" x 3¼" x Size Noted**

**10" x 3¼" # JATA Telescoping Assembly**

| Size in Inches         | # JATA P/N |
|------------------------|------------|
| 10 x 3¼ With 6" Collar | V-JATA6    |



**Jenn Air® Telescoping Assembly w/ 6" Collar (Shown w/Boot, order separately)**

**VENTING PRODUCTS (Cont'd.)**

**Butterfly Dampers**

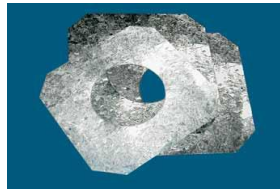
| Size | # V-BD P/N |
|------|------------|
| 4"   | V-BD4      |
| 5"   | V-BD5      |
| 6"   | V-BD6      |
| 7"   | V-BD7      |
| 8"   | V-BD8      |

Note: Vertical Applications Only



**Escutcheons**

| Size | # V-E P/N | Material |
|------|-----------|----------|
| 3"   | V-E3      | Steel    |
| 4"   | V-E4      | Steel    |
| 4"   | V-E4A     | Aluminum |
| 5"   | V-E5      | Steel    |
| 6"   | V-E6      | Steel    |
| 7"   | V-E7      | Steel    |



**7VJ Vent-A-Hood  
 Roof Jack**

# V-7VJ P/N  
 V-7VJ



**DRYER VENT PRODUCTS**

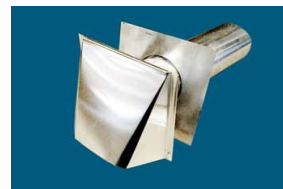
**4" Dryer Vent Jack**

# DV-DVJ4 P/N  
 DV-DVJ4



**Dryer Vents**

| Size | # DV-DV P/N | CTN |
|------|-------------|-----|
| 3"   | DV-DV3      | 12  |
| 4"   | DV-DV4      | 12  |



**4" Backdraft Damper**

# V-BDD4 P/N  
 V-BDD4



**4" Backdraft Damper  
 Horizontal & Vertical  
 Applications**

**Dryer Vent Telescoping Assembly**

| Description                    | Vent P/N  |
|--------------------------------|-----------|
| 6" x 2¼" Assembly With Boot    | DV-DVTA   |
| 6" x 2¼" Assembly Without Boot | DV-DVTALB |
| 6" x 2¼" x 60" Sleeve Only     | DV-DVTASO |
| 6" x 2¼" x 4" # 205 Boot       | 205621/44 |



## Also from M&M Manufacturing...

### More Products...



- Flat Sheet Metal
- Custom Plenums and Transitions
- Roof Curbs and Curb Adapters
- Round and Oval Spiral Duct and Fittings
- Rectangular Duct and Fittings



### More Convenience...



**M&M offers convenience product  
for small quantity orders, fast!**



- B-Vent
- Flexible Duct
- Fiberglass Ductboard, Duct Liner and Duct Wrap
- DryerBox and Dryer Ells
- PVC Pipe
- Flexible Pipe Flashing



**...And Custom Metal Fabrication from  
M&M Precision Products**

4001 Mark IV Parkway  
Fort Worth, TX 76106  
817.336.2311 Ph.  
817.625.0756 Fx.

200 Adolph St.  
Fort Worth, TX 76107  
817.334.0034 Ph.  
817.336.5247 Fx.

360 S. Shiloh Road  
Garland, TX 75042  
972.485.1504 Ph.  
972.485.1314 Fx.

5555 Guhn Road  
Houston, TX 77040  
713.690.0585 Ph.  
713.690.7248 Fx.

12221 Arch Street  
Little Rock, AR 72206  
501.888.3042 Ph.  
501.888.3799 Fx.