

Monterey Home Furnaces

Monterey Home Furnace models feature energy and money-saving operating costs. Easily recessed or surface-mounted options are great in homes, schools, cabins, apartments, offices and shops.

Heating rooms individually allows comfort in areas being used while saving fuel costs in unused areas.

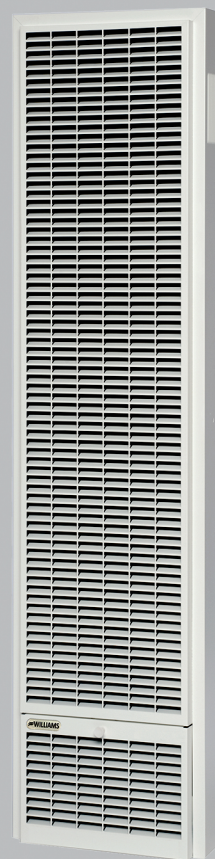
For additional money-saving efficiency, install one of our optional blowers

Features

- No electricity required
- "Matchless" pilot igniter
- Easy installation
- Patented side-relief opening draft hood design reduces flue gas temperature to minimize normal heat loss
- Natural or propane models (conversion kits available)
- Automatic temperature and safety controls
- Resettable vent-limit safety switch
- Thermostat included, may be wall- or cabinet-mounted



Dual-Wall Top-Vent
50,000 Btu/hr.



25,000 - 35,000
Btu/hr.

Williams' dual-wall model, with patented energy-maximizing side-relief draft hood openings will heat two or more rooms quickly and economically. Conveniently installs in the wall to heat two adjacent rooms (25,000 Btu/hr. on each side)

Monterey Home Furnaces

Model Number		Btu/hr. Input	Btu/hr. Output	Efficiency Percentages		Dimensions (Inches)			Thermostat	Shipping Weight (lbs.)
Natural	Propane			Thermal	AFUE	Width	Depth	Height		
Single-Sided Furnaces						Conversaion Kits Available				
2509622A	2509621A	25,000	17,870	72	67	16	6	65¾	Millivolt	83
3509622A	3509621A	35,000	23,000	68	66	16	6	65¾	Millivolt	83
Double-Sided Furnaces						Conversion Kits Available				
5009622A	5009621A	50,000	36,900	74	67	16	6 EACH SIDE	65¾	Millivolt	137

* Elevation rating from sea level to 2,000'

Higher altitude models are available

1/2" Gas Connection

FEATURES

"Matchless" Pilot Igniter

All models include a "matchless" pilot igniter that assures convenient pilot lighting without matches.

Automatic Thermostat

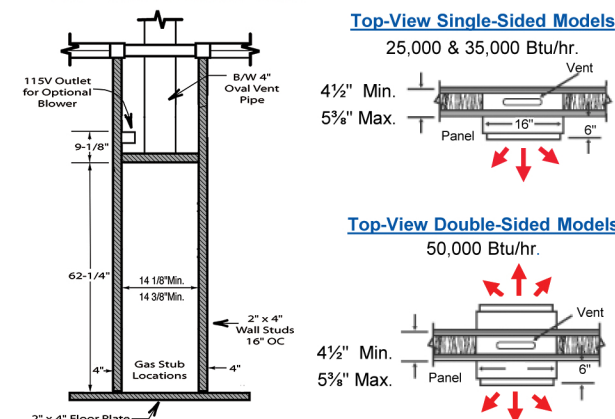
No Electricity Required - All models are equipped with a self-generating millivolt thermostat that may be wall- or cabinet-mounted. All models feature resettable vent-limit safety switch as standard equipment.

Contemporary Finish

Soft-white, powder-coat, heat-resistant finish to compliment any décor.

Interior Furnace Clearances

- 1" from an intersecting wall.
- 16" from the top of the appliance to the ceiling or other obstructions.
- 48" from the furnace front to draperies, furniture or other combustibles.
- 2½" from finished floor.



IMPORTANT

- Read owner's manual before using/installing.
 - Photographs are representative only.
 - Check local codes and ordinances for permitted uses.
 - Consult installation manual for clearances prior to installation.
 - We reserve the right to amend product specifications without notice.
 - Installation and servicing recommended by a qualified service person.
 - Please read the warranty for any limitations of disclaimers.
- Combustion chamber carries a 10-year limited warranty. All other parts carry a one-year limited warranty.
- Venting must comply with the "Venting and Chimney Requirements" section of the instruction manual.
 - Massachusetts Approval G3-0816-23.

WILLIAMS
Comfort Products

facebook.com/WilliamsProducts • linkedin.com/company/williams • twitter.com/WilliamsProduct • instagram.com/williamsproducts
youtube.com/user/WilliamsProducts

© Williams Comfort Products

Printed in USA

ACCESSORIES

Blower - attaches to top of the Monterey Furnaces with ON/OFF switch or automatic operation. Improves circulation of warm air and reduces temperature differences in the room. Optional deluxe blower for increased airflow. Two blowers may be used on 50,000 Btu/hr. units.

Model 2901 - 100 CFM, shipping weight 9 lbs.

Model 2907 - 125 CFM, shipping weight 9 lbs.



Rear-Outlet Register - Chain operated damper with register flush on rear wall, adjusts amount of heat delivered through rear register. Motorized rear-outlet register for increased airflow also available.

Model 6901 - Standard model, shipping weight 4 lbs.

Model 6919 - Motorized model for recessed installation.

Model 6920 - Motorized model for surface-mounted installation. Shipping weight - 6919 and 6920, 10 lbs.



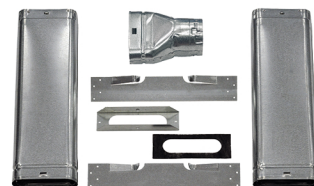
Conversion Kits - Natural gas to LP or LP to Natural gas selections available.

Oval-Vent Starter Kit - contains hold down plate, oval-to-round adapter, spacer plates and two pieces of 2-foot lengths of oval pipe.

Model 9929 - USA

Model 9930 - Canada

Shipping weight 9 lbs.



Replacement Face Panel - soft-white powder-coat face panel

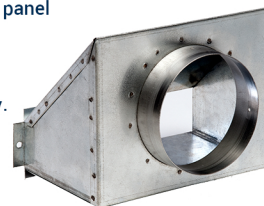
Model 4915, shipping weight 30 lbs.

Vent Adapter - Surface-mounted furnace installations only.

Model 9902, without optional blower installed.

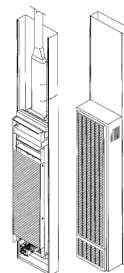
Model 9910, with optional blower installed.

Shipping weight 3 Lbs.



Free-standing Kit - Allows single-sided furnaces to be surface-mounted instead of recessed. Ideal for remodeling in existing masonry construction or when studs are substandard. (furnace and face panel not included),

Model 4901- shipping weight 23 lbs.



Scan for more
information on
Williams' products

250 West Laurel Street
Colton, California 92324 USA
T | 909.825.0993
F | 909.824.8009



Subject to Change without Notice

L1073, 9/17