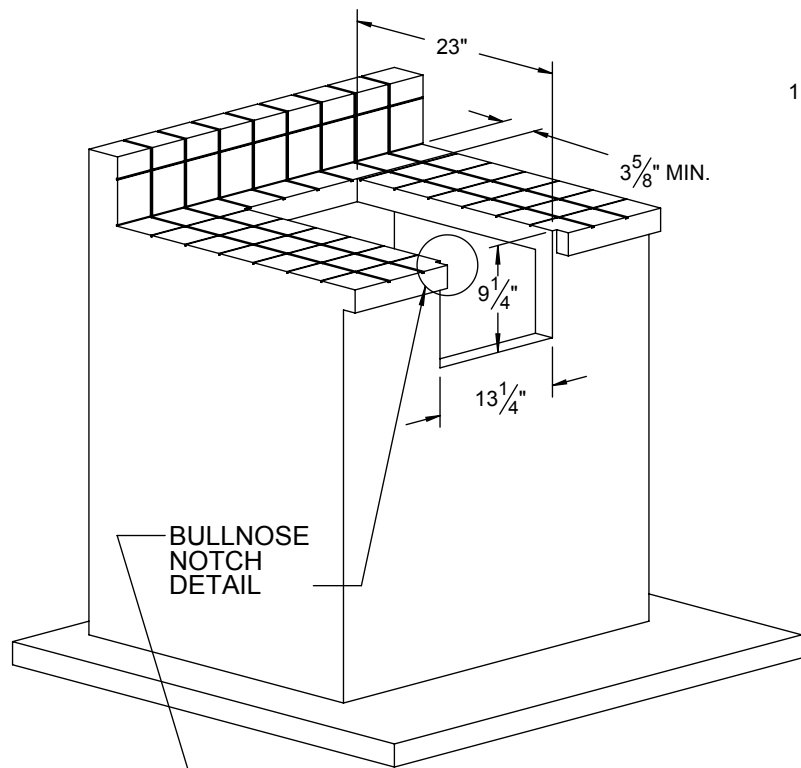
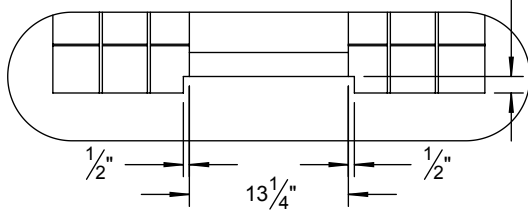


AGBC-14 TYPICAL INSTALLATION

COUNTERTOP CUTOUT REQUIREMENTS

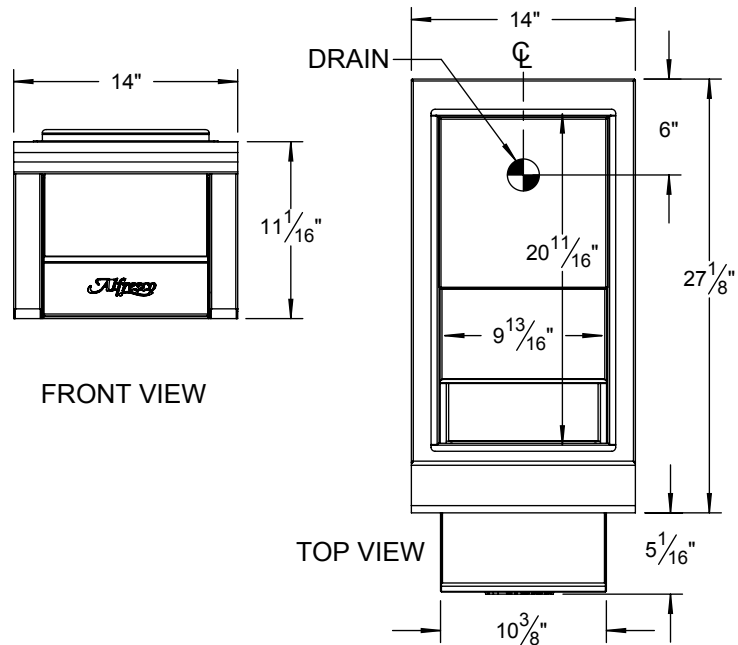


DEPTH EQUAL TO BULLNOSE OVERHANG



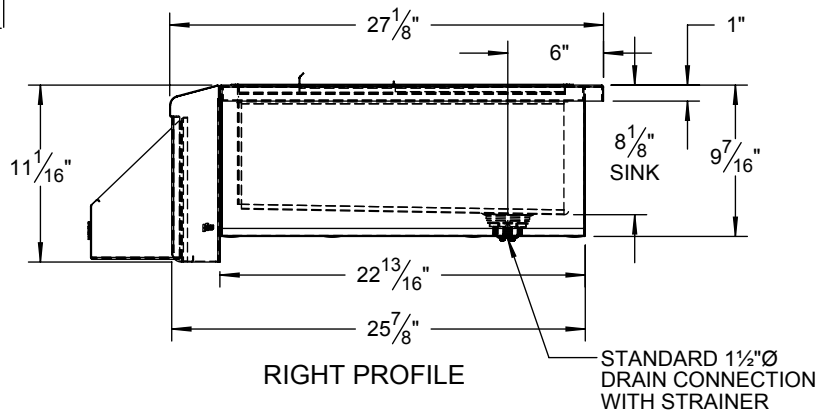
NOTES:

- A DRAIN MUST BE PROVIDED INSIDE THE COUNTER FOR PROPER AGBC-14 INSTALLATION.



FRONT VIEW

TOP VIEW

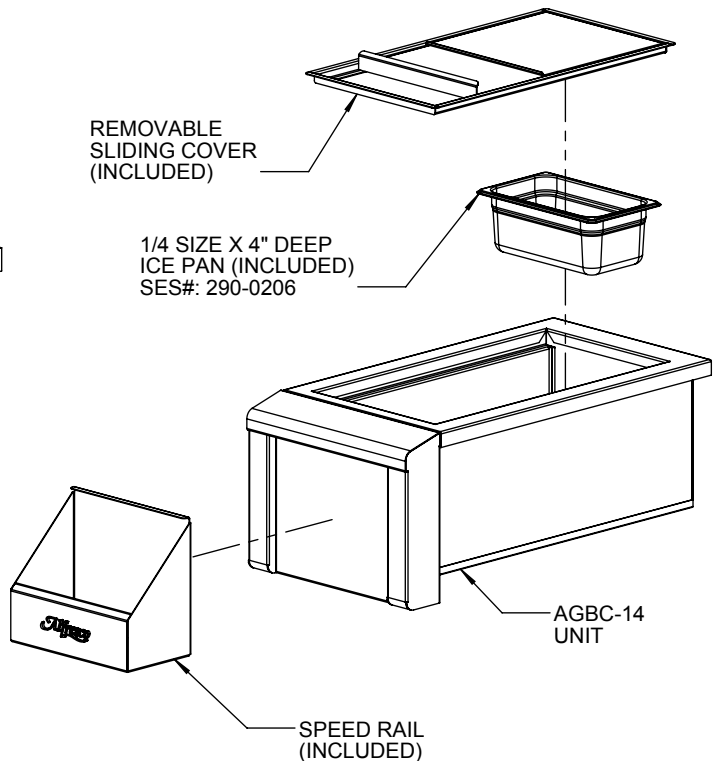


RIGHT PROFILE

STANDARD 1 1/2" Ø
DRAIN CONNECTION
WITH STRAINER

REMOVABLE
SLIDING COVER
(INCLUDED)

1/4 SIZE X 4" DEEP
ICE PAN (INCLUDED)
SES#: 290-0206



AGBC-14
UNIT

SPEED RAIL
(INCLUDED)