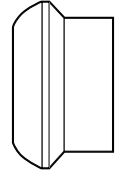


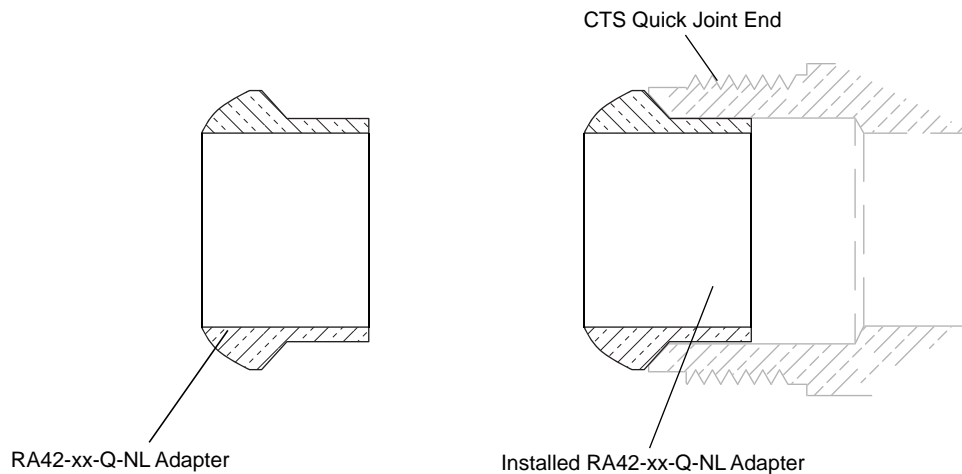
SUBMITTAL INFORMATION

Ring Adapters - (RA42-xx-Q-NL style)



QUICK JOINT TO FLARE (ADAPTER ONLY)

CONVERTS CTS QUICK JOINT SOCKET TO FLARE COPPER NOSE



DESCRIPTION		APPROX. Wt. LBS	PART NUMBER	✓ SUBMITTED ITEM(S)
FOR CTS QJ SLEEVE SIZE AND TYPE	FLARE NOSE SIZE			
3/4" CTS QJ Corporation Stop and Coupling	3/4"	0.1	RA42-33-Q-NL	
1" CTS QJ Corporation Stop and Coupling	1"	0.1	RA42-44-Q-NL	

FEATURES

- All brass that comes in contact with potable water conforms to AWWA Standard C800 (ASTM B584, UNS C89833)
- The product has the letters "NL" cast into the main body for lead-free identification
- Brass components that do not come in contact with potable water conform to AWWA Standard C800 (ASTM B62 and ASTM B584, UNS C83600, 85-5-5-5)
- Converts CTS quick joint socket to flare copper nose, making it adaptable to flare nut or female copper threads
- Not recommended for swivel bends

The Ford Meter Box Company considers the information in this submittal form to be correct at the time of publication. Item and option availability, including specifications, are subject to change without notice. Please verify that your product information is current.



The Ford Meter Box Company, Inc.

P.O. Box 443, Wabash, Indiana U.S.A. 46992-0443

Phone: 260-563-3171 / Fax: 800-826-3487

Overseas Fax: 260-563-0167

www.fordmeterbox.com

06/03/14

Submitted By: