

# Installation

## P19-212

### Horizontal Soap Valve

### Robinet à savon horizontal

### Válvula para jabón horizontal

#### Table of Contents

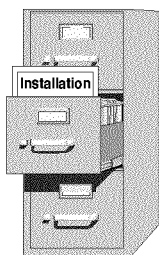
|  |   |
|--|---|
| Soap Valve Start-Up Procedure .....      | 2 |
| General Cleaning of Soap Dispenser ..... | 2 |
| Changing Soap Types .....                | 2 |
| Soap Valve Maintenance .....             | 3 |
| Service Repair Kit .....                 | 4 |

#### Table des matières

|  |   |
|--|---|
| Procédure de démarrage du robinet à savon .....            | 5 |
| Généralités sur le nettoyage du distributeur à savon ..... | 5 |
| Changer de types de savons .....                           | 5 |
| Entretien du robinet à savon .....                         | 6 |
| Trousse de réparation pour entretien .....                 | 7 |

#### Contenido

|   |    |
|---|----|
| Procedimiento de preparación de la válvula para jabón ..... | 8  |
| Limpieza general del dispensador de jabón .....             | 8  |
| Cambio de los tipos de jabón .....                          | 8  |
| Mantenimiento de la válvula para jabón .....                | 9  |
| El paquete de repuesto .....                                | 10 |



**Read this installation manual completely to ensure proper installation, then file it with the owner or maintenance department for future reference to repair and maintenance information.**

**Lire ce manuel d'installation dans son intégralité pour garantir une installation appropriée, puis le classer auprès du service à la clientèle ou du service d'entretien pour s'y référer ultérieurement pour toute information sur les réparations et l'entretien.**

**Lea este manual de instalación en su totalidad para garantizar su instalación adecuada, luego preséntelo al dueño o al Departamento de Mantenimiento para que sirva de referencia futura para reparaciones y mantenimiento.**

## Soap Valve Start-Up Procedure

The soap valve will dispense vegetable or coconut oil liquid soaps, synthetic detergents, viscous lotion soaps, and antiseptic solutions. A 10-15 percent concentration is recommended for vegetable or coconut oil liquid soaps. Synthetic detergents, lotion soaps, and antiseptic soaps require no dilution.

1. Rinse the soap dispenser tank with hot water to remove construction and packing dust from the tank.
2. Shake the water thoroughly out of the soap tank and air dry.
3. Mount the soap dispenser to wall at the desired location.
4. Pour soap into the dispenser tank.
5. Pump soap valve several times to prime the unit.

*NOTE: If an extremely viscous soap is used and the dispenser will not prime, prime the soap dispenser using water.*

## General Cleaning of Soap Dispenser

Cleaning the soap dispenser monthly to remove soap residue, dirt, and other accumulations should become a regular part of your washroom cleaning routine and general maintenance program.

1. Use warm water and soap to clean the exterior of the soap dispenser. Do not use abrasive cleaners on the metal parts of the soap dispenser. Dry and polish with a soft cloth for a bright finish.
2. Inspect the interior of the soap container for residue or coagulation of soap. If residue or coagulation exists, clean the soap container. To clean the soap container, remove the soap dispenser from the wall and pour out any remaining soap in the container. Fill the container with hot water and shake the container until the soap residue is dislodged. Then rinse out the container and repeat steps until the soap container is clean.

*NOTE: If residue does not dislodge with hot water and rinsing alone, place a small chain (about 24 inches long) into the container, shake, and rinse out.*

3. Let the container air dry before remounting and filling with soap.

*NOTE: To clean the internal components of the soap valve follow the instructions under Soap Valve Maintenance on page 3.*

## Changing of Soap Types

1. Remove soap dispenser from wall and pour out all the remaining soap from the dispenser. Using hot water, rinse the soap container two or more times until all the residue in the container is eliminated. In addition, pump the soap valve several times with hot water until a clear flow of water appears. Follow these steps with a rinse of ethyl alcohol (ethanol) and shake out thoroughly. Let the soap dispenser dry.
2. After the dispenser is dry, remount the soap dispenser on the wall and pour the new soap into the soap dispenser. Pump the soap valve several times to prime the unit.

## Soap Valve Maintenance

1. An inoperative soap valve may be due to an excessive concentration of soap solids (coagulation). Rinse the solid-like residue from the internal parts of the soap container by filling the container with hot water and letting the container stand for 10 minutes. Then pump the water through the soap valve. It may be necessary to repeat this step.
2. Coagulation or evaporation of water in the soap due to a lack of soap valve usage maybe due to a clogged soap outlet. Clean the caked dirt on the soap outlet with a pin or paper clip and then clean as explained in Step 1 above.
3. If coagulation of soap inside the valve continues and the valve does not operate, give the inner components of the soap valve a thorough cleaning. Follow the steps below and refer to Figure 1 when disassembling and re-assembling the soap valve.
  - a. Unscrew the soap valve from the soap tank.
  - b. Disassemble the soap valve by first unscrewing the spring cover. Then remove the spring and duckbill from the spring cover, and the pin and rubber washer from the valve housing.
  - c. Remove the screw on the valve housing with a #1 Phillips screwdriver and pull the pump out of the valve housing. Unscrew the retaining screw from the pump, and with a bent paper clip, remove the duckbill check from inside the pump.
  - d. Clean all the soap valve components thoroughly and let air dry.
  - e. Lubricate the O-ring on the pump with a silicone lubricant (supplied by installer) and then re-assemble the soap valve components.
  - f. Screw the soap valve back on the soap container.

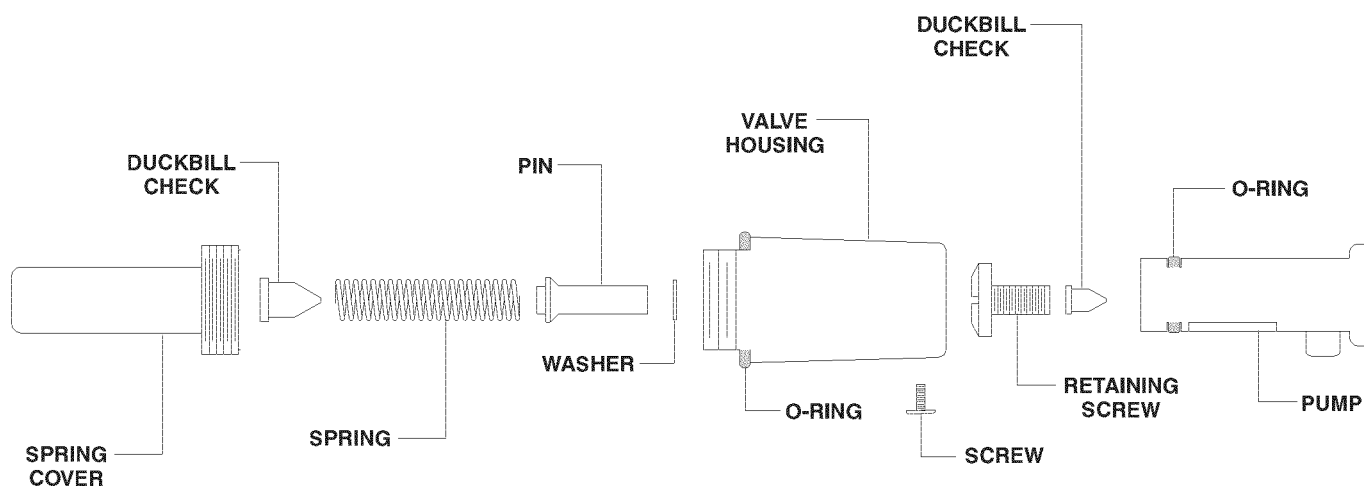


Figure 1

## Service Repair Kit

Sometimes when a dispenser is considered in need of repair, the soap valve might only be clogged and in need of a good cleaning. Follow the Soap Valve Maintenance steps found on page 3 to service and clean the soap valve. If, after following the steps, the soap valve is still inoperative, replace components with Repair Kit P19-213.

*NOTE: When reassembling valve, lubricate the pump O-ring with a silicone lubricant (supplied by the installer).*

### Repair Kit P19-213 includes :

