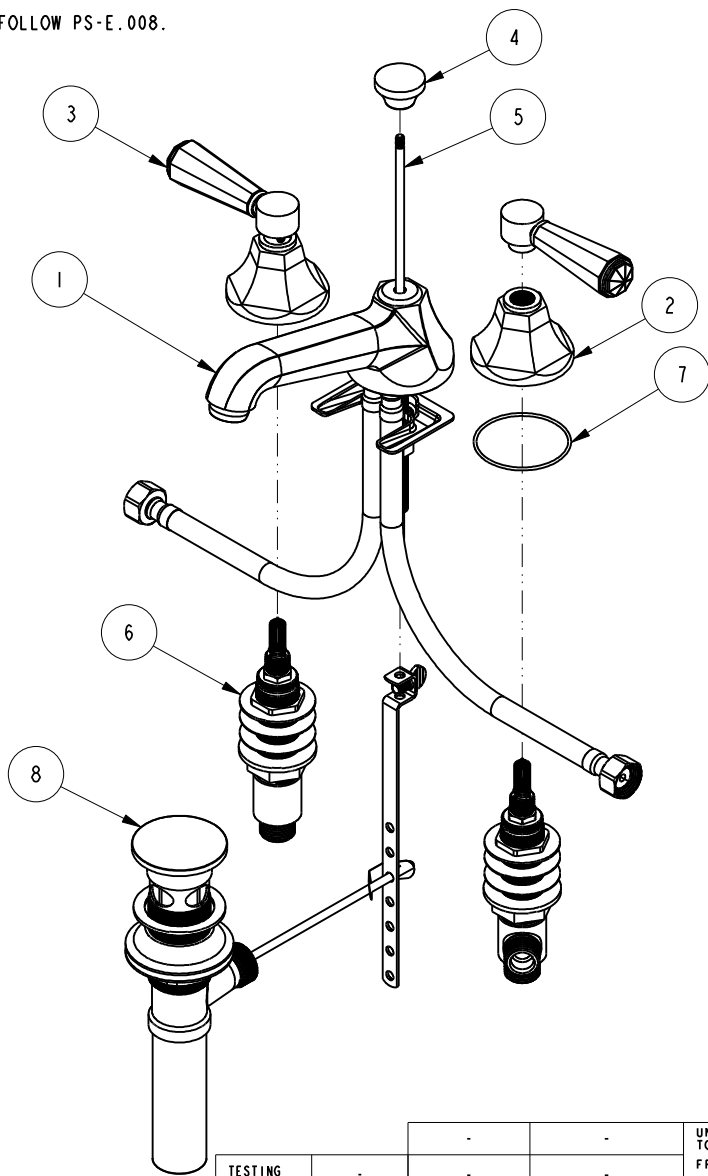


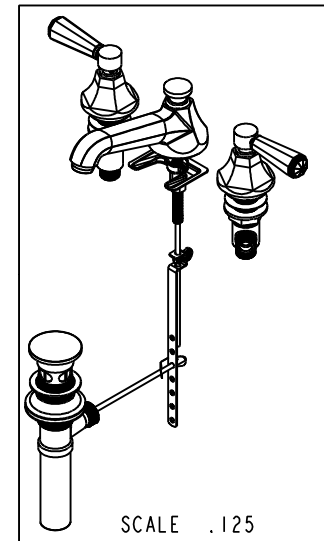
NOTES:

(N1) 1. FIT / FORM / FUNCTION SHALL FOLLOW PS-E.008.



BILL OF MATERIAL (CURRENT LEVEL)

ITEM	PT/ASSY	DESCRIPTION	TYPE	QTY.
1	3-346	ASSY, SPOUT	ASSEMBLY	1
2	10960	HEX ESCUTCHEON	PART	2
3	2-876	CRYSTAL HANDLE LEVER ASM	ASSEMBLY	2
4	10961	SMOOTH POP - UP KNOB	PART	1
5	10288	3/16" POP UP ROD	PART	1
6	1-525_1200	W/S VALVE ASM	ASSEMBLY	1
7	91386	O-RING, #2-034, EPDM, 65-75 DURO	PART	2
8	325	POP UP ASSEMBLY	ASSEMBLY	1



ZONE	REV	DESCRIPTION	DATE	APPROVED
-	A	EN-3371	08/04/17	J.M
-	-	EN-2415	06/04/13	-

COPYRIGHT 2005 BRASSTECH, INC. THESE DRAWINGS AND THE DESIGNS DEPICTED HEREIN ARE THE PROPRIETARY PROPERTY OF BRASSTECH. ANY USE OR REPRODUCTION IS SUBJECT TO THE EXPRESS APPROVAL OF BRASSTECH. UNAUTHORIZED USE IS STRICTLY PROHIBITED. ALL RIGHTS RESERVED.

TESTING	ASSEMBLY	PLATING	POLISHING	MACHINING	TOOLING	FIXTURE #	APPLICATION
-	-	-	-	-	-	-	REMOVE ALL BURRS AND SHARP EDGES
-	-	-	-	-	-	-	NEXT ASSY USED ON

UNITS ARE: INCHES [MM]
 TOLERANCES ARE:
 FRACTIONS DECIMALS ANGLES
 $\pm 1/16"$.X $\pm .1$ [2,5] $\pm 1^\circ$
 $\pm .XX$ $\pm .06$ [1,5]
 (X.XXX) DENOTES CRITICAL DIMS.
 ALL THREADS ARE CRITICAL
 DRAWN VINAY 08/04/17
 CHECKED RAVINDRA 08/04/17
 APPROVED J.M 08/04/17

BRASSTECH 2001 CARNEGIE AVE. SANTA ANA, CA 92705 (949) 417-5207
 INCORPORATED
WIDESPREAD FAUCET
 DWG NO. 1230
 SCALE .225 REF. - SHEET 1 OF 2

