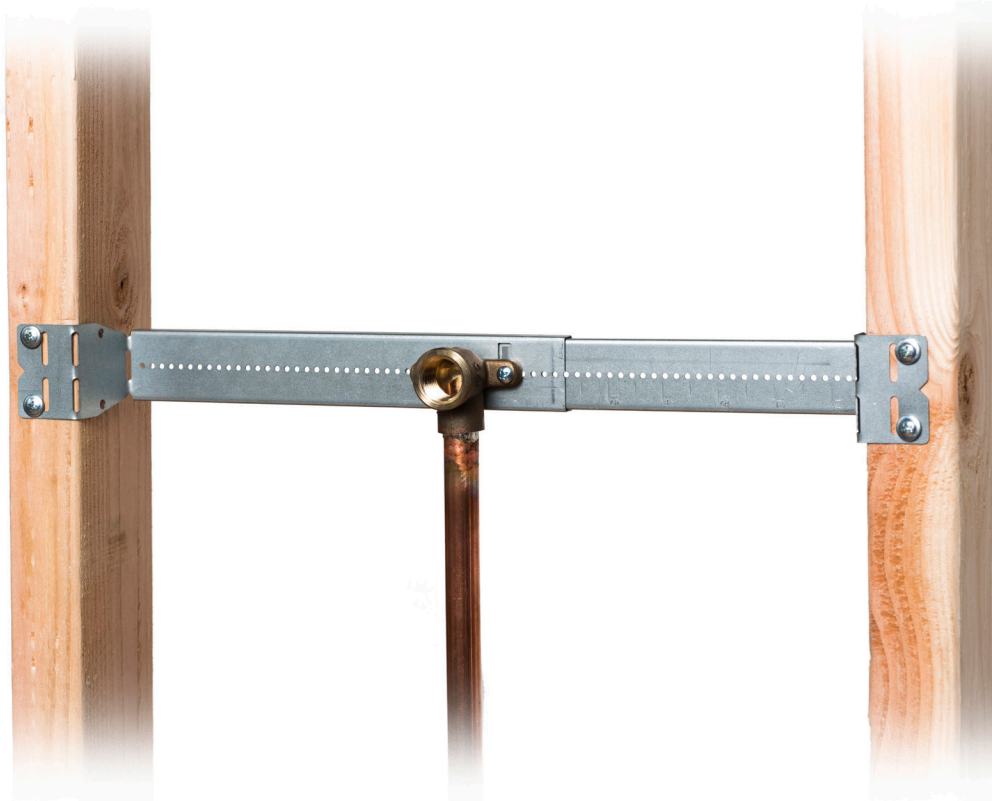


WiderSlider™

Adjustable Galvanized Bracket



User Friendly

Pilot holes allow for faster 2-eared DE-90 installations. When a 3-eared DE-90 is preferred, secure the fitting with self-tapping screws.

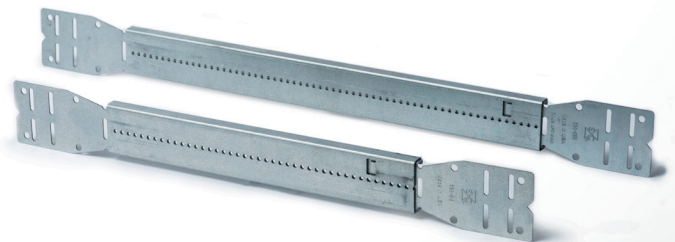
Each bracket has pre-dimension hash marks for more precise installations and the tabs are easily bendable offering $\frac{3}{4}$ ", $1\frac{1}{2}$ " or $2\frac{1}{8}$ " depths within the stud cavity.

Pre-assembled

Pre-assembled and fully adjustable with interlocking tab to secure safe overlap and prevent disassembly. Available in two lengths for 16" and 24" stud bays.

Durable & Reliable

WiderSlider™ adjustable brackets are $1\frac{3}{8}$ " wide x 22-gauge high quality G90 pre-galvanized steel. Best of all, they're made in the USA.



Supply

Drainage

Support

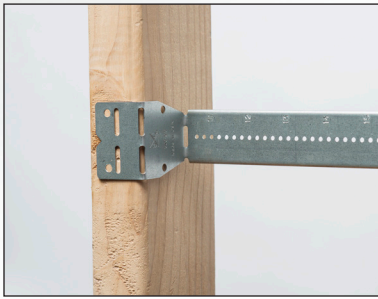
Specialties

www.siouxchief.com

TAKE THE FIELD.



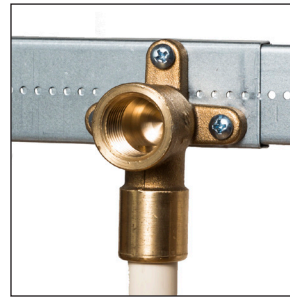
Installation Guidelines



1. Bend tabs to accommodate $\frac{3}{4}$ ", $1\frac{1}{2}$ " or $2\frac{1}{8}$ " depths from face of stud.

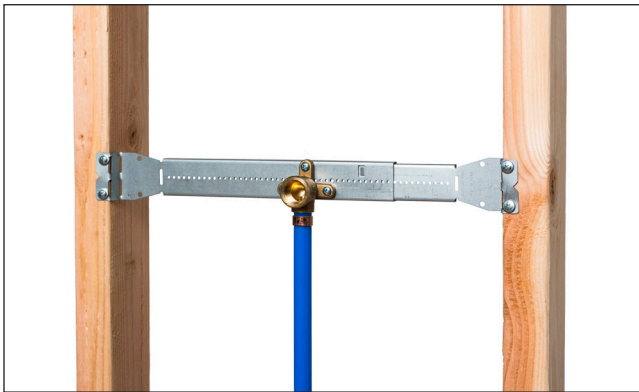


2. Secure bracket to stud or floor joist with at least 4 screws (not included).



3. Secure DE-90 elbow, pipe clamps, or tube straps directly to bracket.

Pilot holes allow for faster 2-eared DE-90 installations. When a 3-eared DE-90 is preferred, secure with any self-tapping screw.



Completely adjustable to fit a range of depths to align with the shower valve.



Ideal for 24" metal stud bays.



520-616



520-626

Buying Information

ITEM NO.	DESCRIPTION	PKG	MIN. QTY.	CASE QTY.
OXBOX™ SUPPLY BOX with THREE Valve Outlets				
520-616	For 16" stud bays with 9 - 15 adjustability	B	50	50
520-626	For 24" stud bays with 13" - 23" adjustability	B	50	50

PACKAGING:
B = Bulk

