

DESCRIPTION

Complete vitreous china rear spud small urinal.

FLUSH CYCLE

- SU-7019-A Universal High-Efficiency
(0.125 to 0.5 gpf/0.5 to 1.9 Lpf)
Code: 1107019

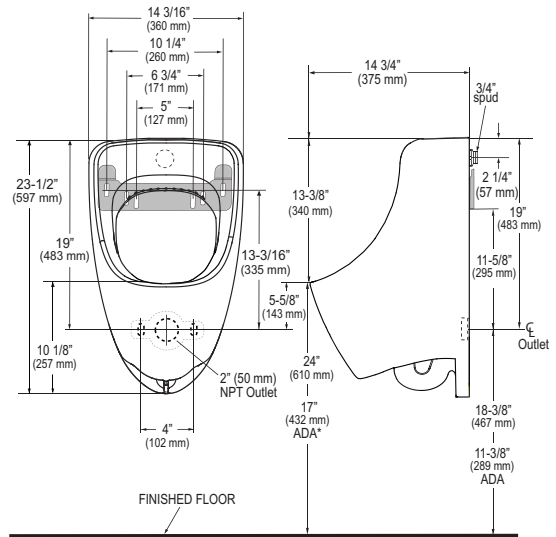
Flush volume is determined by the flushometer used with the urinal.



SPECIFICATIONS

Urinal

- Wall hung vitreous china
- Washdown flushing action
- 3/4" I.P.S. rear spud inlet
- 2" NPT outlet flange included
- All mounting hardware included
- Integral flushing rim
- 100% factory flush tested
- Carrier not included
- Vandal resistant strainer assembly included
- Compliant to the applicable sections of ASME A112.19.2/CSA B45.1



NOTE: All vitreous china dimensions shown in these drawings are nominal. Dimensions can vary within the tolerances established in the governing ASME A112.19.2/CSA B45.1 standard. Please take this into consideration when planning rough-in and plumbing layouts.

Product Specification

Washdown urinal shall be made of vitreous china with a 3/4" rear spud. Urinal shall have a 14 3/4" rim from finished wall. Urinal shall include a vandal resistant strainer, inlet spud, and hanger. Urinal shall be Sloan Model SU-7019-A-0.125 to 0.5 gpf (0.5 to 1.9 Lpf).



This fixture meets or exceeds the following specifications:
The American Disabilities Guidelines and ANSI A117.1 when installed according to these requirements.

NOTE: Plumbing System Requirements

- ✓ Minimum **Flowing** Pressure: 25 PSI
- ✓ Maximum Static Pressure: 80 PSI

This space for Architect/Engineer approval	
Job Name	Date
Model Specified	Quantity
Variations Specified	
Customer/Wholesaler	
Contractor	
Architect	



Sloan
10500 Seymour Avenue
Franklin Park, IL 60131
Phone: 1-800-9-VALVE-9
Fax: 1-800-447-8329
www.sloanvalve.com