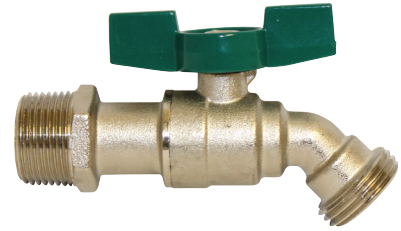


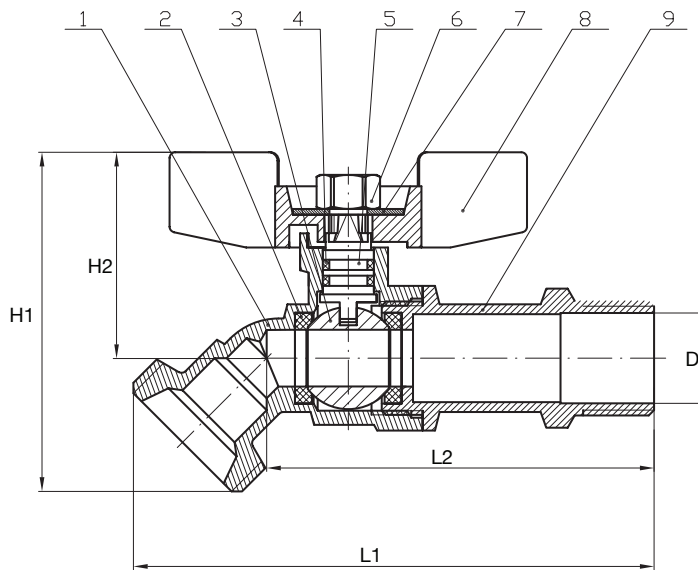
SUBMITTAL DATA SHEET

No-Lead Low Pressure Valves No-Kink Hose Bibb - 72007BV

MNPT X G.H.T.



A.Y. McDonald Mfg. Co. No-Lead Low Pressure Valves are constructed from heavy duty no-lead brass and are recommended for residential and commercial applications and positive shut-off with various inlet configurations.



Dimensions

Size	L1	L2	H1	H2	D
1/2"	3.63	2.69	2.30	1.44	.63
3/4"	4.17	3.19	2.41	1.44	.787

Materials

No.	Part	Material
1	Valve Body	No-Lead Brass
2	Sealing	PTFE
3	Brass Bal	Chrome
4	O-ring	NBR
5	Bonnet	No-Lead Brass
6	Hex Nut	Nickle Plated
7	Label	Aluminum
8	Handle	Aluminum
9	Contact Nipple	No-Lead Brass

SUBMITTAL INFORMATION

- Sizes: 1/2" - 3/4"
- 125 WOG
- 1/2" MNPT or SWT Combination
- 1/4 turn operation

NO-LEAD: The weighted average of the wetted surface of this no-lead product contacted by consumable water contains less than one quarter of one percent (0.25%) lead.



A.Y. McDonald Mfg. Co.
P.O. Box 508
Dubuque, IA 52004-0508

Toll Free: 1-800-292-2737
Fax: 1-800-832-9296
Hours: 7:00 a.m. - 5:00 p.m., CST

sales@aymcdonald.com
www.aymcdonald.com

A.Y. McDonald considers the information on this assembly drawing correct when published. Item and option availability, including specifications, are subject to change without notice.

Submitted by: