

## For Residential and Commercial Applications

Job Name		Engineer / Architect	
Job Location		Wholesaler	
Submittal Date		Contractor	

### HU125 Series Hose Barb to Male Hose Thread Adaptor

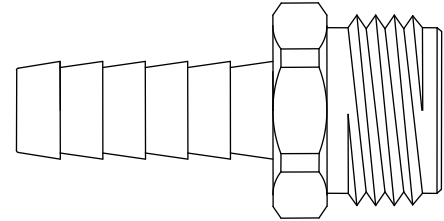
**Use:** Use hose barb to connect plastic or rubber tubing; installation requires a hose clamp. Use male hose threads to connect to residential and commercial grade garden hoses. Hose thread connection requires a rubber washer (PS2338) inserted prior to installation.

**Design Features:**

-  **No Lead** Available

**Operating Specifications:**

**Temperature:** -35° to 100° F  
**Working Pressure:** 75 PSI maximum,  
 Intermittent to 150 PSI



**Standard Product**

MATERIAL SPECIFICATIONS	
<b>Fitting</b>	Brass

**No-Lead Product**

MATERIAL SPECIFICATIONS	
<b>Fitting</b>	No-Lead brass

**Standard Part Listing:**

- |                          |               |   |
|--------------------------|---------------|---|
| <input type="checkbox"/> | HU125-8-12    | 1/2" ID hose barb x 3/4" male hose thread       |
| <input type="checkbox"/> | HU125-8-12 B  | 1/2" ID hose barb x 3/4" male hose thread, bulk |
| <input type="checkbox"/> | HU125-10-12   | 5/8" ID hose barb x 3/4" male hose thread       |
| <input type="checkbox"/> | HU125-10-12 B | 5/8" ID hose barb x 3/4" male hose thread, bulk |
| <input type="checkbox"/> | HU125-12-12   | 3/4" ID hose barb x 3/4" male hose thread       |
| <input type="checkbox"/> | HU125-12-12 B | 3/4" ID hose barb x 3/4" male hose thread, bulk |

**No-Lead Part Listing:**

- |                          |                |   |
|--------------------------|----------------|---|
| <input type="checkbox"/> | HU125-8-12X    | 1/2" ID hose barb x 3/4" male hose thread       |
| <input type="checkbox"/> | HU125-8-12X B  | 1/2" ID hose barb x 3/4" male hose thread, bulk |
| <input type="checkbox"/> | HU125-10-12X   | 5/8" ID hose barb x 3/4" male hose thread       |
| <input type="checkbox"/> | HU125-10-12X B | 5/8" ID hose barb x 3/4" male hose thread, bulk |
| <input type="checkbox"/> | HU125-12-12X   | 3/4" ID hose barb x 3/4" male hose thread       |
| <input type="checkbox"/> | HU125-12-12X B | 3/4" ID hose barb x 3/4" male hose thread, bulk |

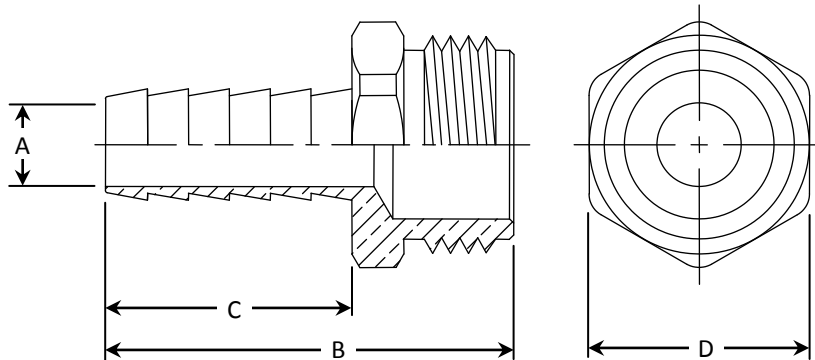
# HU125 Series Hose Barb to Male Hose Thread Adaptor

## Standard Product

PART DIMENSIONS (Inches)					
Model	Hose Thread	DIA. A	DIM. B	DIM. C	HEX. D
HU125-8-12	3/4-11-1/2	.406	1.97	1.19	1-1/16
HU125-10-12	3/4-11-1/2	.531	1.97	1.19	1-1/16
HU125-12-12	3/4-11-1/2	.625	1.96	1.19	1-1/16

## No-Lead Product

PART DIMENSIONS (Inches)					
Model	Hose Thread	DIA. A	DIM. B	DIM. C	HEX. D
HU125-8-12X	3/4-11-1/2	.406	1.97	1.19	1-1/16
HU125-10-12X	3/4-11-1/2	.531	1.97	1.19	1-1/16
HU125-12-12X	3/4-11-1/2	.625	1.96	1.19	1-1/16



## Listings & Certifications:

- No-Lead product CSA listed to Low Lead Content Certification Program – Plumbing Products Class 6853-01



This specification and all information contained herein is the confidential and exclusive property of BrassCraft Manufacturing, and shall not be disclosed to others without the written consent of BrassCraft Mfg. This specification must be returned to BrassCraft Mfg if requested.

**BrassCraft**®