

For Residential and Commercial Applications

Job Name		Engineer / Architect	
Job Location		Wholesaler	
Submittal Date		Contractor	

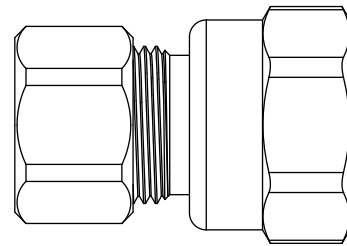
10/12/30/32 Series Female Compression Adaptors - Drill Through

Use: For use with potable and non-potable water, instrumentation, hydraulic, and pneumatic systems. Designed for use with aluminum, copper, and plastic tubing*. Not intended for use with steel tubing.

* Plastic tubing requires a plastic insert and sleeve (see 60PT & 63PT submittal forms for details).

Design Features:

- **Little to no tube preparation.** Compression fittings do not require flaring, soldering, or other types of tube preparation
- **No Lead available**



Operating Specifications:

Temperature: -65° to 250° F
Working Pressure: See chart below
Vibration: Fair vibration resistance

WORKING PRESSURE		
PSI	Tube OD	Tube Wall (Inches)
200	3/8	0.032
200	1/2	0.032

Standard Product

MATERIAL SPECIFICATIONS	
Body	Brass
Compression Sleeve	Brass
Compression Nut	Chrome plated brass
Option	Chrome plating

Standard Part Listing:

- 10 C 3/8" OD tube x 3/8" FIP, chrome plated
- 10 CBT 3/8" OD tube x 3/8" FIP, chrome plated, plain train, bulk
- 10 R 3/8" OD tube x 3/8" FIP, rough brass
- 10-1 CBT 3/8" OD tube x 3/8" FIP - body only, chrome plated, plain tray, bulk
- 10-1 RBT 3/8" OD tube x 3/8" FIP - body only, rough brass, plain tray, bulk
- 12 C 3/8" OD tube x 1/2" FIP, chrome plated
- 12 CBT 3/8" OD tube x 1/2" FIP, chrome plated, plain tray, bulk
- 12 R 3/8" OD tube x 1/2" FIP, rough brass
- 12-1 CBT 3/8" OD tube x 1/2" FIP - body only, chrome plated, plain tray, bulk
- 12-1 RBT 3/8" OD tube x 1/2" FIP - body only, rough brass, plain tray, bulk

This specification and all information contained herein is the confidential and exclusive property of BrassCraft Manufacturing, and shall not be disclosed to others without the written consent of BrassCraft Mfg. This specification must be returned to BrassCraft Mfg if requested.

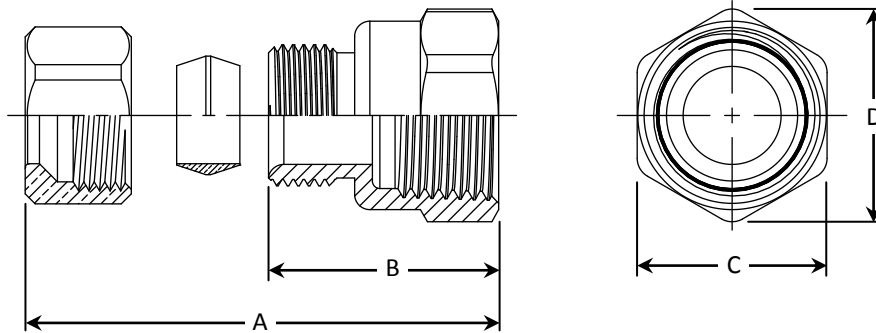


10/12/30/32 Series Female Compression Adaptors - Drill Through

Standard Part Listing (con't):

- 30 C 1/2" OD tube x 3/8" FIP, chrome plated
- 30-1 CBT 1/2" OD tube x 3/8" FIP - body only, chrome plated, plain tray, bulk
- 30-1 RBT 1/2" OD tube x 3/8" FIP - body only, rough brass, plain tray, bulk
- 32 C 1/2" OD tube x 1/2" FIP, chrome plated
- 32-1 CBT 1/2" OD tube x 1/2" FIP - body only, chrome plated, plain tray, bulk
- 32-1 RBT 1/2" OD tube x 1/2" FIP - body only, rough brass, plain tray, bulk

PART DIMENSIONS (Inches)				
Model	DIM. A	DIM. B	HEX. C	DIM. D
10	1.19	0.91	3/4	.84
12	1.28	1.00	7/8	.98
30	1.19	0.91	3/4	.84
32	1.28	1.00	7/8	.98



This specification and all information contained herein is the confidential and exclusive property of BrassCraft Manufacturing, and shall not be disclosed to others without the written consent of BrassCraft Mfg. This specification must be returned to BrassCraft Mfg if requested.

