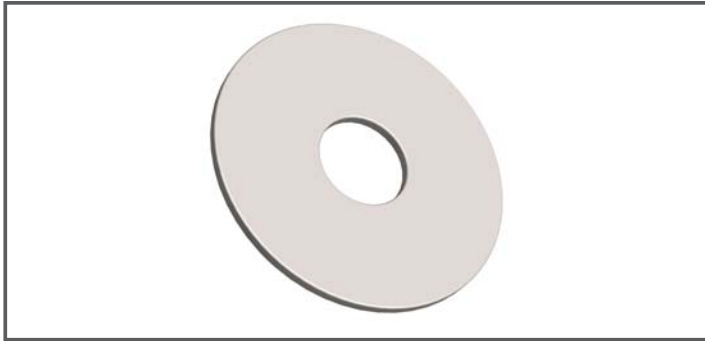


WASHERS (FENDER)

- Zinc Plated, Low Carbon Steel
- Use to cover oversize holes and slots or to distribute load over larger areas of low strength materials



Properties/Standards

Material & Mechanical Properties: N/A

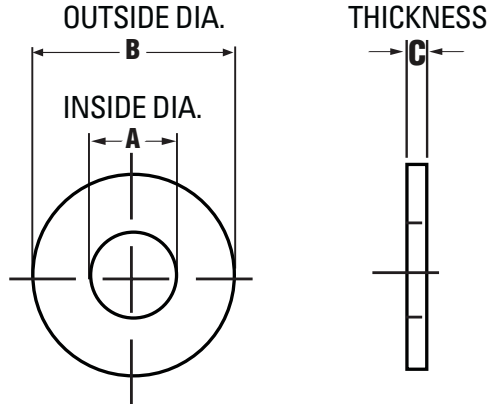
Material: Low Carbon Steel

Thread Dimensions: ASME B18.21.1

Plating: ASTM F1941 Fe/Zn 3AT

Packaging: Bagged (See Qty/per below)

Dimensional Specifications



Size	A. Inside Diameter			D. Outside Diameter			E. Thickness			ALT #	Master #	Pack Qty
	basic	min	max	basic	min	max	basic	min	max			
1/4" x 1"	0.285	0.275	0.295	1.000	0.992	1.029	0.065	0.047	0.080	PS000824	4565974	50
1/4" x 1-1/4"	0.285	0.275	0.295	1.250	1.242	1.279	0.065	0.047	0.080	PS000825	4565975	50
3/8" x 1-1/4"	0.410	0.400	0.420	1.250	1.242	1.279	0.065	0.047	0.080	PS000826	4565976	50
3/8" x 1-1/2"	0.410	0.400	0.420	1.500	1.492	1.529	0.065	0.047	0.080	PS000827	4565977	50
3/8" x 2"	0.535	0.400	0.420	2.000	1.992	2.209	0.065	0.047	0.080	PS000828	4565978	25
1/2" x 1-1/2"	0.535	0.525	0.545	1.500	1.492	1.529	0.065	0.047	0.080	PS000829	4565979	25
1/2" x 2"	0.507	0.525	0.545	2.000	1.992	2.029	0.065	0.047	0.080	PS000830	4565980	25

*General Notes : Meet parallel and flatness requirements of ASTM F 844. Fender washer size equivalent to nominal screw size.