



### WASHERS (FLAT)

- Zinc Plated, Low Carbon Steel, Type A - USS or Standard Plate Wide
- Use to minimize embedding and to aid tightening

### Properties/Standards

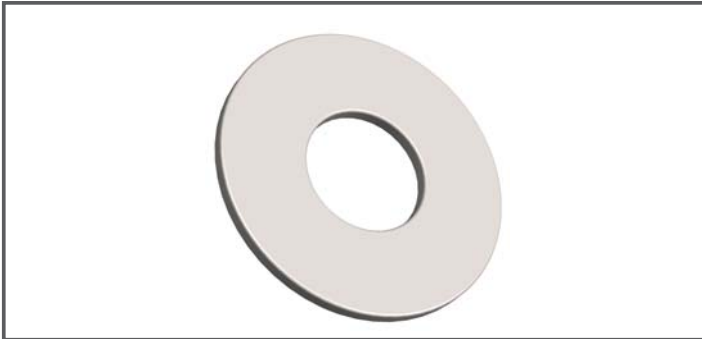
Material & Mechanical Properties: N/A

Material: Low Carbon Steel

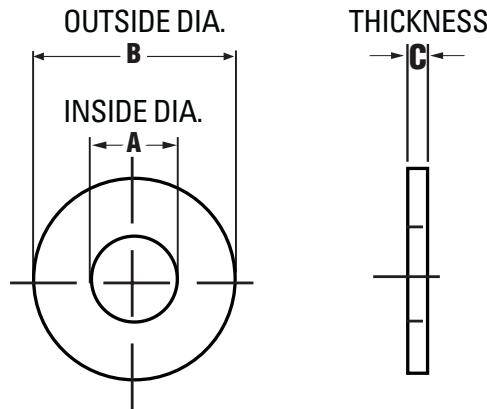
Thread Dimensions: ASME B18.21.1

Plating: ASTM F1941 Fe/Zn 3AT

Packaging: Bagged (See Qty/per below)



### Dimensional Specifications



Nominal Size	A. Inside Diameter			D. Outside Diameter			E. Thickness			ALT #	Master #	Pack Qty
	basic	plus tolerance	minus tolerance	basic	plus tolerance	minus tolerance	basic	plus tolerance	minus tolerance			
1/4"	0.312	0.015	0.005	0.734	0.015	0.007	0.065	0.080	0.051	PS000854	4565981	100
5/16"	0.375	0.015	0.005	0.875	0.030	0.007	0.083	0.104	0.064	PS000855	4565952	100
3/8"	0.438	0.015	0.005	1.000	0.030	0.007	0.083	0.104	0.064	PS000856	4565983	100
1/2"	0.562	0.015	0.005	1.375	0.030	0.007	0.109	0.132	0.086	PS000857	4565984	25
5/8"	0.688	0.030	0.007	1.750	0.030	0.007	0.134	0.160	0.086	PS000858	4565986	25
3/4"	0.812	0.030	0.007	2.000	0.030	0.007	0.148	0.177	0.122	PS000859	4565987	12
7/8"	0.938	0.030	0.007	2.250	0.030	0.007	0.165	0.192	0.136	PS000860	4565989	12
7/8"	1.062	0.030	0.007	2.500	0.030	0.007	0.165	0.192	0.136	PS000861	4565990	12

\*General Note: Nominal washer size intended for use with comparable screw and nut sizes. Meet parallel and flatness requirements of ASTM F 844.