

SPECIFICATIONS

FIGURE X440

BRASS BODY BALL VALVES



LOW-LEAD COMPLIANT 2-PC FULL PORT 600 WOG W/ ISO MOUNTING PAD

FEATURES

- 600 WOG
- 150 PSI WSP
- Full port
- NSF 61 Annex G certified (UL) (Annex G references NSF 372)
- Blow-out proof stem
- Viton® O-ring stem seal with additional PTFE seal
- Threaded NPT ends
- Forged brass body & end cap
- Viton® O-ring backed seats for reduced operating torque
- Mounting pad for direct mount actuation
- 100% electronically tested in open & closed position at 80 PSI
- Sizes 1/2"–4"



PRODUCT SPECIFICATIONS

Standards

- Design: MSS SP-110*
- End connections: ANSI B1.20.1
- Seat/Shell test: MSS SP-110
- Mounting pad: ISO 5211

* The specification MSS SP-110 addresses valve design with handles. The X440 does not include a handle. Other than this exception, the valve meets the design criteria of the specification.

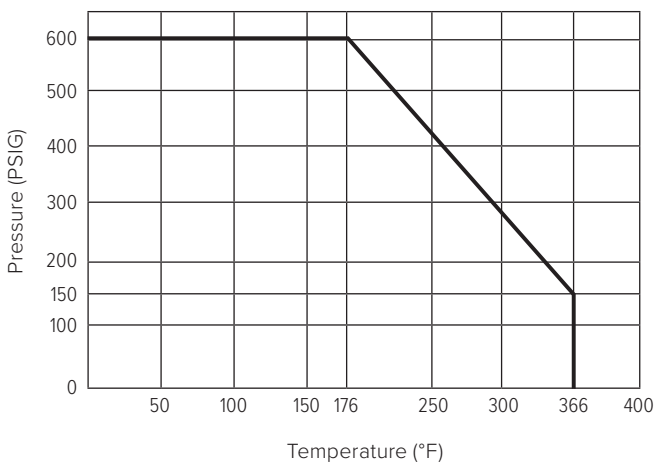
NOT FOR USE AT OR BELOW GROUND LEVEL.

FIGURE NUMBER MATRIX

FNW X440	
SIZE CODE (IN.)	
1/2 = D	2 = K
3/4 = F	2-1/2 = L
1 = G	3 = M
1-1/4 = H	4 = P
1-1/2 = J	

CV, TORQUE & WEIGHT

Size (in.)	Cv	Torque (in.-lbs)	Wt (lbs)
1/2	18.84	52	0.5
3/4	34.1	52	0.73
1	49.71	52	1.5
1-1/4	102.88	52	1.83
1-1/2	265.88	154	3.20
2	306.34	154	5.48
2-1/2	624	240	10.8
3	1010	256	16.2
4	1606	487	27.5



Low-Lead Compliant: Referring to laws defining "Lead Free" as wetted surface of pipe, fittings, and fixtures in potable water systems that have a weighted average lead content $\leq 0.25\%$ per the Safe Drinking Water Act (Sec. 1417) amended 1-4-2011 as well as other state regulations.

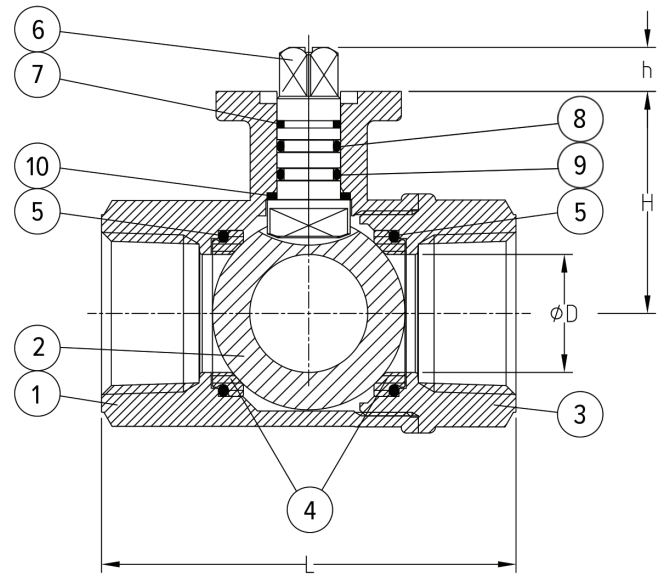
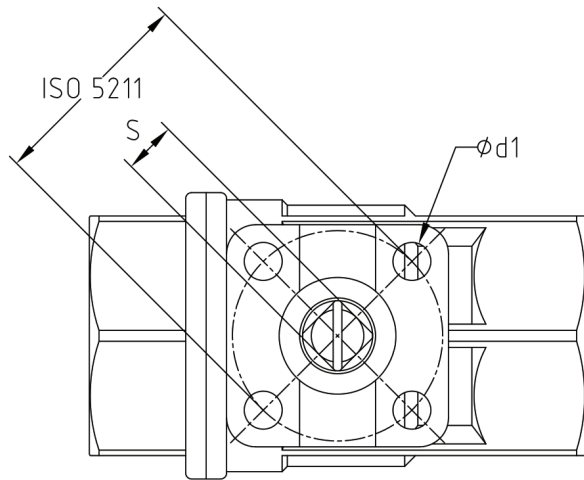
PARTS BREAKDOWN

FIGURE X440

BRASS BODY BALL VALVES



LOW-LEAD COMPLIANT 2-PC FULL PORT 600 WOG
W/ ISO MOUNTING PAD



PART MATERIALS & QUANTITY

Ref #	Description	Material	Qty
1	Body	Brass CW 510L	1
2	Ball	Brass CW 510L	1
3	End Cap	Brass CW 510L	1
4	Seat	PTFE	2
5	Seat Backing O-ring	FKM (Viton®)	2
6	Stem	Brass CW 510L	1
7	Stem Seal	PTFE	1
8	Stem O-ring	EPDM	1
9	Stem O-ring	FKM	1
10	Thrust Washer	PTFE	1

DIMENSIONS (IN.)

Size (in.)	ØD	L	H	h	S	ISO 5211	ØD1
1/2	0.56	2.52	1.22	0.35	0.354	1.42/F03	0.24
3/4	0.75	2.74	1.30	0.35	0.354	1.42/F03	0.24
1	0.95	3.23	1.55	0.35	0.354	1.42/F03	0.24
1-1/4	1.18	3.54	1.70	0.35	0.354	1.42/F03	0.24
1-1/2	1.49	4.00	2.20	0.43	0.433	1.97/F05	0.27
2	1.97	4.69	2.57	0.43	0.433	1.97/F05	0.27
2-1/2	2.52	5.95	3.23	0.59	0.550	2.75/F07	0.35
3	4.01	6.69	3.60	0.59	0.550	2.75/F07	0.35
4	4.92	7.84	4.43	0.69	0.670	2.75/F07	0.35