

Job Name:

System Reference:

Date:

APPLIES TO INDOOR UNIT:

- SEZ-KD18NA4
- SEZ-KD18NA4.TH
- SEZ-KD18NAR1.TH
- SEZ-KD18NA4R1.TH

APPLIES TO OUTDOOR UNIT:

- SUZ-KA18NA
- SUZ-KA18NAR1



GENERAL FEATURES

- Concealed horizontal-ducted unit for applications with short duct runs
- Quiet operation
- Ultra-thin body: 7-7/8" high
- Built-in condensate lift mechanism
- Multiple control options available:
 - kumo cloud[®] smart device app for remote access
 - Third-party interface options
 - Wired or wireless controllers

SPECIFICATIONS: SEZ-KD18NA4 & SUZ-KA18NA

Cooling ¹	Maximum Capacity	Btu/h	19,000
	Rated Capacity	Btu/h	17,200
	Minimum Capacity	Btu/h	3,800
	Maximum Power Input	W	1,460
	Rated Power Input	W	1,380
	Moisture Removal	Pints/h	3.4
	Sensible Heat Factor		0.79
	Power Factor	%	97/97
Heating at 47°F ²	Maximum Capacity	Btu/h	24,900
	Rated Capacity	Btu/h	21,600
	Minimum Capacity	Btu/h	4,800
	Maximum Power Input	W	2,230
	Rated Power Input	W	1,700
	Power Factor	%	98/98
Heating at 17°F ³	Maximum Capacity	Btu/h	15,000
	Rated Capacity	Btu/h	13,100
	Maximum Power Input	W	1,830
	Rated Power Input	W	1,350
Heating at 5°F ⁴	Maximum Capacity	Btu/h	11,600
	Maximum Power Input	W	1,400
Efficiency	SEER		17.5
	EER ¹		12.5
	HSPF (IV)		10.0
	COP at 47°F ²		3.72
	COP at 17°F in Maximum Capacity ³		2.40
	COP at 5°F in Maximum Capacity ⁴		2.43
	ENERGY STAR® (ENERGY STAR products are third-party certified by an EPA-recognized Certification Body.)		YES
Electrical	Voltage, Phase, Frequency		208/230V, 1 phase, 60Hz
	Guaranteed Voltage Range	V AC	187-253
	Voltage: Indoor - Outdoor, S1-S2	V AC	208/230
	Voltage: Indoor - Outdoor, S2-S3	V DC	24
	Voltage: Indoor - Remote controller	V DC	12
	Recommended Fuse/Breaker Size	A	15
	Recommended Wire Size (Indoor - Outdoor)	AWG	14
Indoor Unit	MCA	A	1
	MOCP	A	15
	Blower Motor Full Load Amperage	A	0.74
	Blower Motor Output	W	96
	Airflow Rate at Cooling, Dry	CFM	635-529-423
	Airflow Rate at Cooling, Wet	CFM	572-476-381

SPECIFICATIONS: SEZ-KD18NA4 & SUZ-KA18NA

	Airflow Rate at Heating, Dry	CFM	635-529-423	
	Sound Pressure Level (Cooling)	dB(A)	38-34-30	
	Sound Pressure Level (Heating)	dB(A)	38-34-30	
	External Static Pressure	in.WG	0.02-0.06-0.14-0.20	
	Drain Pipe Size	In. (mm)	1 1/4 (32)	
	Condensate Lift Mechanism, Maximum Distance	In. (mm)	21-21/32 (550)	
	Heat Exchanger Type		Plate fin coil	
	External Finish Color		Galvanized	
	Unit Dimensions	W: In. (mm)		46 7/8 (1,190)
		D: In. (mm)		27 9/16 (700)
		H: In. (mm)		7 7/8 (200)
	Package Dimensions	W: In. (mm)		55 1/8 (1,400)
		D: In. (mm)		35 7/16 (900)
		H: In. (mm)		14 3/16 (360)
Unit Weight	Lbs. (kg)		62 (28)	
Package Weight	Lbs. (kg)		90 (41)	
Indoor Unit Operating Temperature Range	Cooling Intake Air Temp (Maximum / Minimum)*	°F	95 DB / 71 WB // 67 DB / 57 WB	
	Heating Intake Air Temp (Maximum / Minimum)	°F	80 DB // 70 DB	
Outdoor Unit	MCA	A	14	
	MOCP	A	15	
	Fan Motor Full Load Amperage	A	0.93	
	Fan Motor Output	W	77	
	Airflow Rate	CFM	1,730 / 1,659	
	Refrigerant Control		LEV	
	Defrost Method		Reverse cycle	
	Heat Exchanger Type		Plate fin coil	
	Sound Pressure Level, Cooling ¹	dB(A)	54	
	Sound Pressure Level, Heating ²	dB(A)	56	
	Compressor Type		DC INVERTER-driven Twin Rotary	
	Compressor Model		SNB130FQBH	
	Compressor Rated Load Amps	A	10.0	
	Compressor Locked Rotor Amps	A	12.5	
	Compressor Oil Type // Charge	oz.	NEO22 // 15.2	
	External Finish Color		Munsell 3Y 7.8/1/1	
	Base Pan Heater		Optional (MAC-642BH-U1)	
	Unit Dimensions	W: In. (mm)		33-1/16 (840)
		D: In. (mm)		13 (330)
		H: In. (mm)		33-7/16 (850)
Package Dimensions	W: In. (mm)		40 (1,020)	
	D: In. (mm)		18-1/2 (470)	
	H: In. (mm)		39 (990)	

SPECIFICATIONS: SEZ-KD18NA4 & SUZ-KA18NA

	Unit Weight	Lbs. (kg)	119 (54)
	Package Weight	Lbs. (kg)	146 (66)
Outdoor Unit Operating Temperature Range	Cooling Air Temp (Maximum / Minimum)*	°F	115 / 14
	Cooling Thermal Lock-out / Re-start Temperatures**	°F	-7 / -4
	Heating Air Temp (Maximum / Minimum)	°F	75 / 12
	Heating Thermal Lock-out / Re-start Temperatures**	°F	-7 / -4
Refrigerant	Type		R410A
	Charge	Lbs, oz	3, 16
Piping	Gas Pipe Size O.D. (Flared)	In. (mm)	1/2 (12.7)
	Liquid Pipe Size O.D. (Flared)	In. (mm)	1/4 (6.35)
	Maximum Piping Length	Ft. (m)	100 (30)
	Maximum Height Difference	Ft. (m)	50 (15)
	Maximum Number of Bends		10

Notes

AHRI Rated Conditions (Rated data is determined at a fixed compressor speed)	¹ Cooling (Indoor // Outdoor)	°F	80 DB, 67 WB // 95 DB, 75 WB
	² Heating at 47°F (Indoor // Outdoor)	°F	70 DB, 60 WB // 47 DB, 43 WB
	³ Heating at 17°F (Indoor // Outdoor)	°F	70 DB, 60 WB // 17 DB, 15 WB
Conditions	⁴ Heating at 5°F (Indoor // Outdoor)	°F	70 DB, 60 WB // -4 DB, -5 WB

*Applications should be restricted to comfort cooling only; equipment cooling applications are not recommended for low ambient temperature conditions.

**System cuts out in heating mode to avoid thermistor error and automatically restarts at these temperatures.

ACCESSORIES: SEZ-KD18NA4

Filter Box with MERV 8 Filters	<input type="checkbox"/> FBL 1-3
Signal Receiver	<input type="checkbox"/> PAR-SA9CA-E
Wireless Remote Controller	<input type="checkbox"/> PAR-FL32MA-E
Wireless Remote Receiver	<input type="checkbox"/> PAR-FA32MA-E
Backlit, Wall-mounted, Wireless Controller	<input type="checkbox"/> MHK1
Portable Central Controller	<input type="checkbox"/> MCCH1
Wired MA Controller	<input type="checkbox"/> PAR-33MAA
Simple MA Controller	<input type="checkbox"/> PAC-YT53CRAU
Touch MA Controller	<input type="checkbox"/> PAR-CT01MAU-SB
Wired Remote Sensor	<input type="checkbox"/> PAC-SE41TS-E
Lockdown Bracket for Wireless, Hand-held, Remote Controller	<input type="checkbox"/> RCMKP1CB
Wireless Temperature and Humidity Sensor	<input type="checkbox"/> PAC-USWHS003-TH-1
Outside Air Sensor for MHK1	<input type="checkbox"/> MOS1
Flush Mount Remote Temperature Sensor	<input type="checkbox"/> PAC-USSEN001-FM-1
Wireless Interface	<input type="checkbox"/> PAC-USWHS002-WF-1
Thermostat Interface	<input type="checkbox"/> PAC-US444CN-1
kumo station®	<input type="checkbox"/> PAC-WHS01HC-E
USNAP Interface	<input type="checkbox"/> PAC-WHS01UP-E
IT Extender	<input type="checkbox"/> PAC-WHS01IE-E
BACnet® and MODBUS® Interface	<input type="checkbox"/> PAC-UKPRC001-CN-1
External Fan / Heater Control Relay Adapter	<input type="checkbox"/> CN24RELAY-KIT-CM3
Connector cable for remote display	<input type="checkbox"/> PAC-SA88HA-EP
Connector for CN32 (remote on/off)	<input type="checkbox"/> PAC-SE55RA-E
Remote Operation Adapter (with wire terminals for remote ON/OFF and operation status/ error) ¹	<input type="checkbox"/> PAC-SF40RM-E
Bottom Return Plate (Converts low-profile ducted indoor unit from rear return to bottom return)	<input type="checkbox"/> BRP-3
External Drain Pump	<input type="checkbox"/> PAC-KE07DM-E
Blue Diamond Sensor Extension Cable—15 Ft.	<input type="checkbox"/> C13-103
Blue Diamond Alarm Extension Cable—6.5 Ft.	<input type="checkbox"/> C13-192
Blue Diamond MultiTank—collection tank for use with multiple pumps	<input type="checkbox"/> C21-014
Blue Diamond Rubber Foot Pads	<input type="checkbox"/> F10-010
Mini Condensate Pump—230V application	<input type="checkbox"/> SI30-230
MegaBlue Advanced Blue Diamond Condensate Pump w/ Reservoir & Sensor	<input type="checkbox"/> X87-835 - 110 to 250V
MaxiBlue Advanced Blue Diamond Mini Condensate Pump w/ Reservoir & Sensor (110V) up to 48,000 Btu/h [recommended]	<input type="checkbox"/> X87-711 - 110V
MaxiBlue Advanced Blue Diamond Mini Condensate Pump w/ Reservoir & Sensor (208/230V) up to 48,000 Btu/h [recommended]	<input type="checkbox"/> X87-721 - 208/230V
Drain Pan Level Sensor (Control for indoor unit shut off to prevent drain pan overflow)	<input type="checkbox"/> DPLS2
3 Pole Disconnect Switch (30A/600VUL) [fits 2"X4" utility] - Black	<input type="checkbox"/> TAZ-MS303
3 Pole Disconnect Switch (30A/600VUL) [fits 2"X4" utility] - White	<input type="checkbox"/> TAZ-MS303W
1/4" x 1/2" x 15' / 1/2" Lineset (Twin-Tube Insulation)	<input type="checkbox"/> MLS141212T-15
1/4" x 1/2" x 30' / 1/2" Lineset (Twin-Tube Insulation)	<input type="checkbox"/> MLS141212T-30
1/4" x 1/2" x 50' / 1/2" Lineset (Twin-Tube Insulation)	<input type="checkbox"/> MLS141212T-50
1/4" x 1/2" x 65' / 1/2" Lineset (Twin-Tube Insulation)	<input type="checkbox"/> MLS141212 -65
1/4" x 1/2" x 100' / 1/2" Lineset (Twin-Tube Insulation)	<input type="checkbox"/> MLS141212 -100

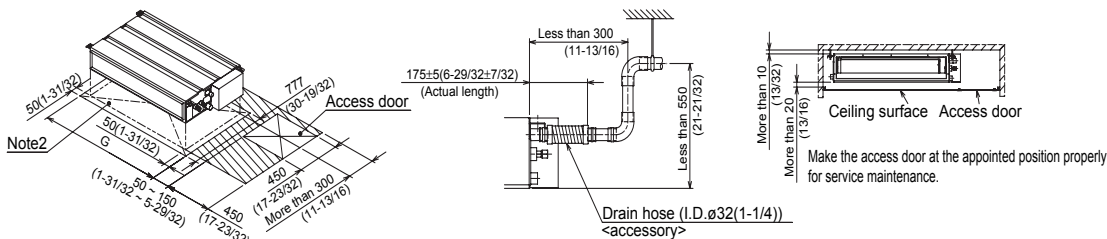
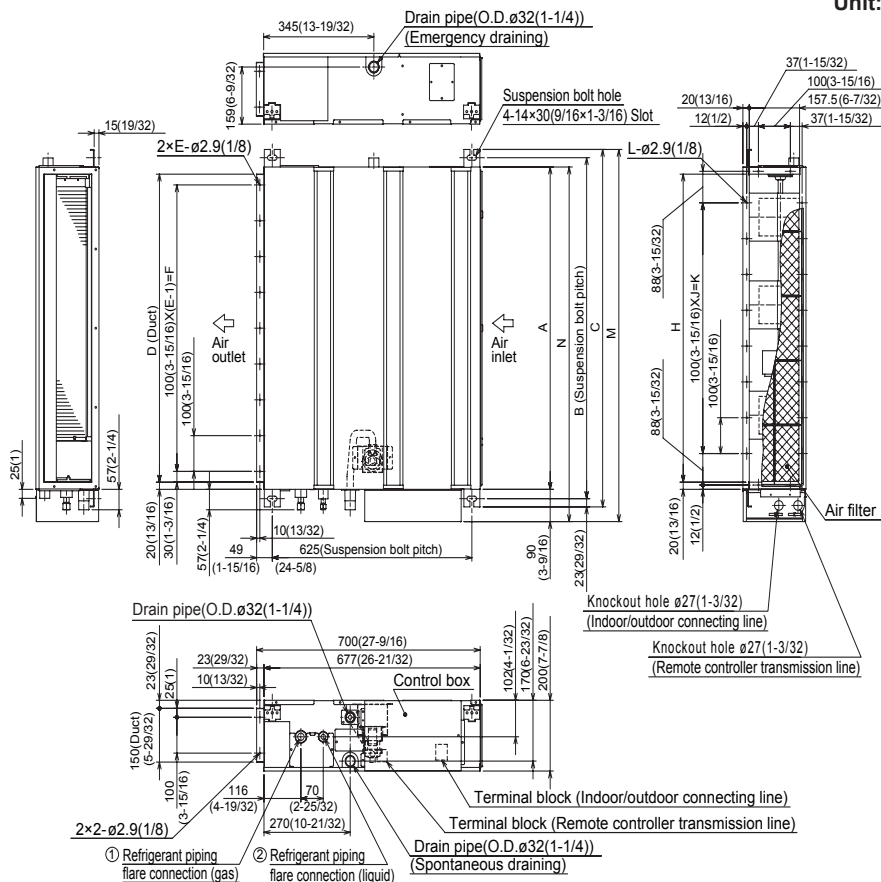
¹ Unable to use with wireless remote controller

ACCESSORIES: SUZ-KA18NA

Air Outlet Guide	□ MAC-886SG-E
Defrost Heater	□ MAC-641BH-U1
Outdoor Unit 3-1/4 inch Mounting Base (Pair) - Plastic	□ DSD-400P
Condensing Unit Mounting Pad 16" x 36" x 3"	□ ULTRILITE1
Outdoor Unit Stand—12" High	□ QSMS1201M
Outdoor Unit Stand—18" High	□ QSMS1801M
Outdoor Unit Stand—24" High	□ QSMS2401M
Heavy Duty Wall Mounting Bracket for Outdoor Units—Coated Steel	□ QSWB2000M-1
Heavy Duty Wall Mounting Bracket for Outdoor Units—316 Series Stainless Steel	□ QSWBSS

DIMENSIONS: SEZ-KD18NA4

Unit: mm (inch)



Required space for service and maintenance

mm (in.)

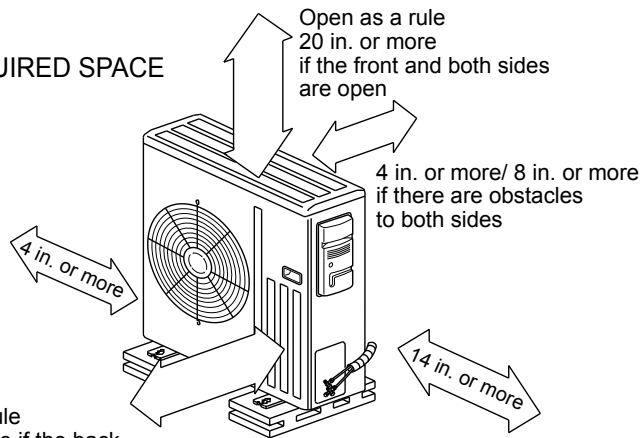
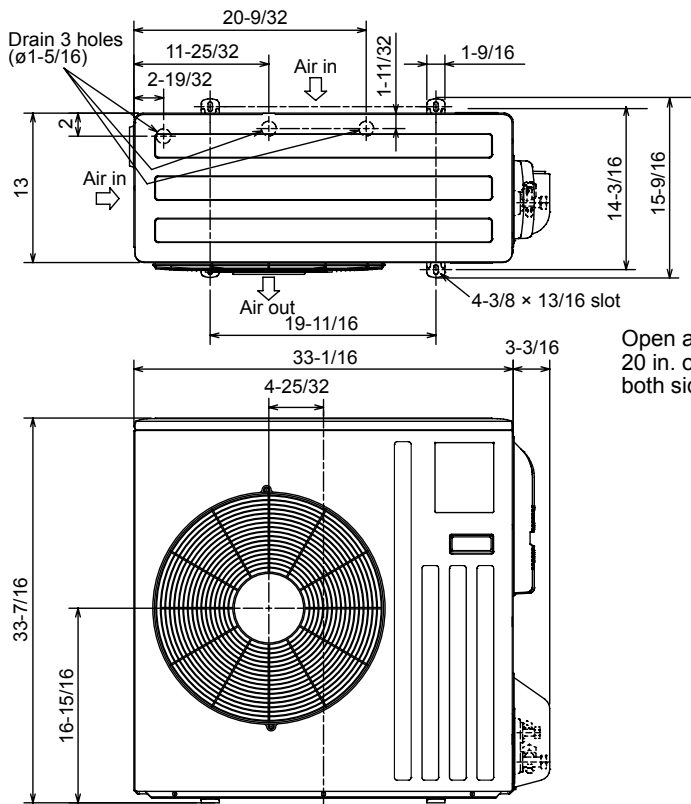
Sizes	A	B	C	D	E	F	G	H	J	K	L	M	N	① Gas pipe	② Liquid pipe
09 kBTu/h	700 (27-9/16)	752 (29-5/8)	798 (31-7/16)	660 (26)	7	600 (23-5/8)	800 (31-1/2)	660 (26)	5	500 (19-11/16)	16	839 (33-1/16)	790 (31-1/8)	ø9.52(3/8)	ø6.35(1/4)
12 kBTu/h	900 (35-7/16)	952 (37-1/2)	998 (39-5/16)	860 (33-7/8)	9	800 (31-1/2)	1000 (39-3/8)	860 (33-7/8)	7	700 (27-9/16)	20	1039 (40-29/32)	990 (39)		
15 kBTu/h	1100 (43-5/16)	1152 (45-3/8)	1198 (47-3/16)	1060 (41-3/4)	11	1000 (39-3/8)	1200 (47-1/4)	1060 (41-3/4)	9	900 (35-7/16)	24	1239 (48-25/32)	1190 (46-7/8)		
18 kBTu/h														ø12.7(1/2)	

- Note1. Use M10 screw for the suspension bolt (field supply).
- Keep the service space for the maintenance at the bottom.
 - This chart indicates for size 15 kBTu/h model, which has 3 fans.
 Sizes 09, 12 kBTu/h models have 2 fans.
 Sizes 08 kBTu/h model has 4 fans.
 - When an inlet duct is used, remove the air filter (supply with the unit), then install the filter (field supply) at suction side.

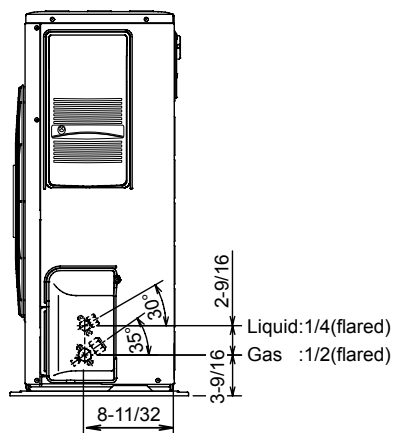
DIMENSIONS: SUZ-KA18NA

Unit: inch

REQUIRED SPACE



Open as a rule 20 in. or more if the back, both sides and top are open



COOLING & HEATING

1340 Satellite Boulevard, Suwanee, GA 30024
 Toll Free: 800-433-4822 www.mehvac.com



FORM# SEZ-KD18NA4 / SUZ-KA18NA - 201811Ver2

Specifications are subject to change without notice.

© 2018 Mitsubishi Electric Trane HVAC US LLC. All rights reserved.