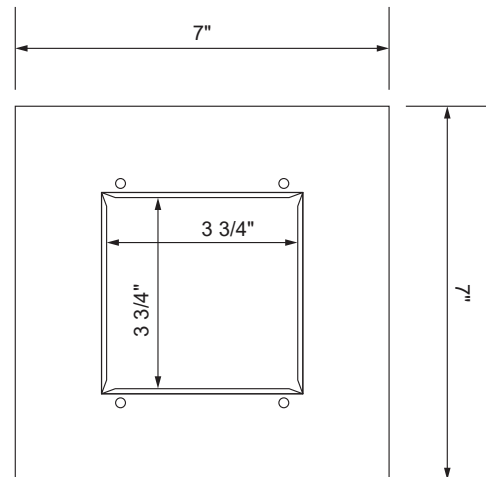
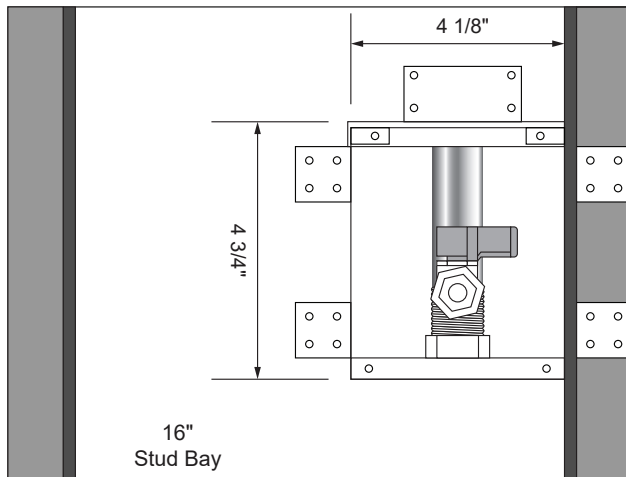




## White Powder Coated Ice Maker Outlet Box With Lead Free Hammer Arrester Valves



### Specifications:

Furnish and install recessed, white powder coated ice maker outlet box. Ice maker outlet box shall have a brass, quarter turn lead free hammer arrester valve which complies with NSF61/NSF/ANSI 372 and ASME A112.18.1. Valve shall feature white handle and checkmark logo for easy Lead-Free identification. The box and faceplate are 20-gauge steel. Unit shall be Guy Gray™ product code checked below as manufactured by IPS Corporation.

Item #	Product Description	Model #	Units/Case
88531	Brass Qtr Turn Hammer Arrester Valve, Installed, 1/2" Sweat Conx.	MIB1HAAB	5
88533	Brass Qtr Turn Hammer Arrester Valve, Installed, 1/2" CPVC Conx.	MIB2HAAB	5



500 Distribution Parkway, Collierville, TN 38017 • Phone: 800-888-8312 • Fax: 901-853-5008 • [www.ipscorp.com](http://www.ipscorp.com)