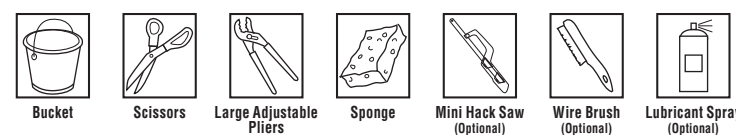


# FLUIDMASTER® 2" FLUSH VALVE INSTALLATION INSTRUCTIONS FOR TWO PIECE TOILETS

**WARNING**  
**DO NOT USE IN-TANK DROP-IN TOILET BOWL CLEANERS CONTAINING BLEACH OR CHLORINE.** Use of such products will: (1) RESULT IN DAMAGE to tank components and MAY CAUSE FLOODING and PROPERTY DAMAGE and (2) VOID FLUIDMASTER WARRANTY.  
 Fluidmaster Flush 'n Sparkle Toilet Bowl Cleaning System is recommended for those choosing to use in-tank bowl cleaners and WILL NOT VOID the FLUIDMASTER WARRANTY because it will not damage the components. **DO NOT** overtighten nuts or tank/bowl may crack. Always use quality Fluidmaster parts when installing or repairing. Fluidmaster will not be responsible or liable for use of non-Fluidmaster parts during installation or repair.

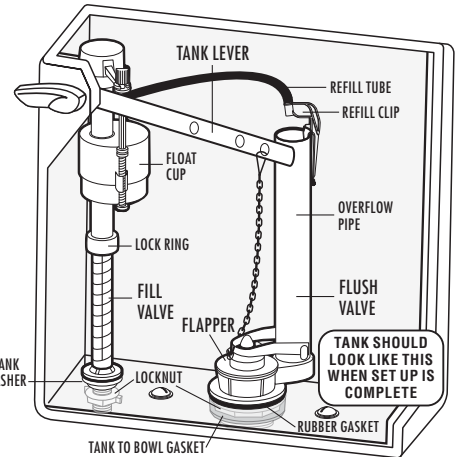
**LIMITED FIVE-YEAR EXPRESS WARRANTY**  
 Subject to the "Exclusions" set forth below, Fluidmaster Inc. promises to the consumer to repair, or at the option of Fluidmaster Inc. to replace any part of this plumbing product which proves to be defective in workmanship or materials under normal use for five years from the date of purchase. All costs of removal, transportation and reinstallation to obtain warranty service shall be paid by the consumer. During this "Limited Five Year Express Warranty," Fluidmaster Inc. will provide, subject to the "Exclusions" section set forth below, all replacement parts free of charge, necessary to correct such defects. This "Limited Five Year Warranty" is null and void if this plumbing product has not been installed and maintained in accordance with all written instructions accompanying the product, and if non-Fluidmaster Inc. parts are used in installation.  
**EXCLUSIONS:** FLUIDMASTER INC. SHALL NOT BE LIABLE FOR INCIDENTAL OR CONSEQUENTIAL DAMAGES, INCLUDING COSTS OF INSTALLATION, WATER DAMAGE, PERSONAL INJURY OR FOR ANY DAMAGES RESULTING FROM ABUSE OR MISUSE OF THE PRODUCT, FROM OVERTIGHTENING OR FROM FAILURE TO INSTALL OR MAINTAIN THIS PLUMBING PRODUCT IN ACCORDANCE WITH THE WRITTEN INSTRUCTIONS, INCLUDING USE OF NON-FLUIDMASTER PARTS. DO NOT USE IN-TANK DROP-IN TOILET BOWL CLEANERS CONTAINING BLEACH OR CHLORINE. USE OF SUCH PRODUCTS WILL RESULT IN DAMAGE TO TANK COMPONENTS AND MAY CAUSE FLOODING AND PROPERTY DAMAGE. USE OF SUCH PRODUCTS WILL VOID THIS WARRANTY.

## TOOLS NEEDED



30800 Rancho Viejo Road, San Juan Capistrano, CA 92675  
 www.Fluidmaster.com • 800-631-2011  
 Contact Fluidmaster for troubleshooting help or visit www.fluidmaster.com  
 M-F 5:30 am - 5:00 pm PST.

## DO NOT USE



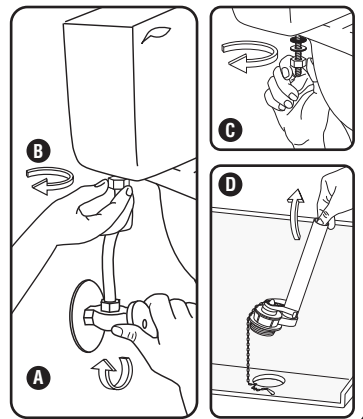
## PARTS IN THIS KIT:

- (1) Flush Valve
- (1) Flapper
- (1) Rubber Gasket
- (1) Large Plastic Locknut
- 507AK/PRO57K only**
- (1) Tank to Bowl Gasket
- (2) Brass Bolts
- (4) Stainless Steel Washers
- (4) Stainless Steel Hex Nuts (two thick & two thin)
- (6) Rubber Washers

## PREPARATION

### 1 Remove Old Flush Valve

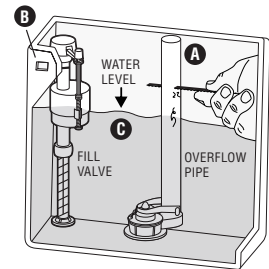
Remove tank lid. Use pencil to mark water level of tank. Then follow steps A-D.  
**A.** Turn off water supply (Clockwise). Flush toilet and remove excess water from tank with sponge.  
**B.** Remove water supply coupling nut.  
**C.** Unbolt tank from toilet bowl. Remove tank and lay on its side on a safe and secure surface. Remove washers, nuts and bolts. **Note:** If you have a three bolt tank save bolt, washer and nut in best condition for future use. Clean bolt & nut with wire brush and lubricant spray.  
**D.** Remove tank to bowl gasket from under tank. Loosen and remove flush valve lock nut and remove flush valve from tank.



### 2 Preparing the Flush Valve for Installation

Before flush valve installation, ensure overflow pipe and water level of tank are correctly set.

1. **THE TOP OF OVERFLOW PIPE (A)** must be cut 1" below bottom of **TANK LEVER HOLE (B)**. Remove tank to bowl gasket and flush valve lock nut first. Insert flush valve into tank hole. Mark the flush valve 1" below bottom of tank lever hole. Remove flush valve and cut overflow pipe at specified mark.
2. **WATER LEVEL (C)** is set below top of overflow pipe (Fluidmaster recommends 1/2").

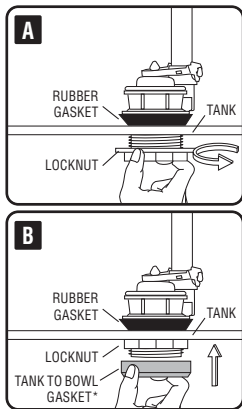


Code Compliance helps protect your home & drinking water supply.

## INSTALLATION

### 3 Installing Flush Valve

**A.** Insert flush valve into tank hole. Position overflow pipe toward back of tank (**Do not** cover bolt holes of tank).  
**B.** Holding flush valve in place, thread large plastic locknut onto threads of flush valve. Hand tighten locknut and then use large adjustable pliers to go 1/2 turn beyond hand tight. **Do not overtighten.**  
**C.** Place tank to bowl gasket on bottom of flush valve locknut. Gasket should cover locknut.  
**\*Note:** If you have a Gerber or Kohler two piece toilet, it is recommended you use a different tank to bowl gasket.  
**Gerber:** Use an extra thick Gerber gasket.  
**Kohler:** Use a triangular Kohler gasket. (Both Gerber and Kohler gaskets not included).

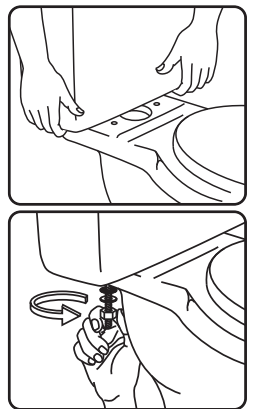
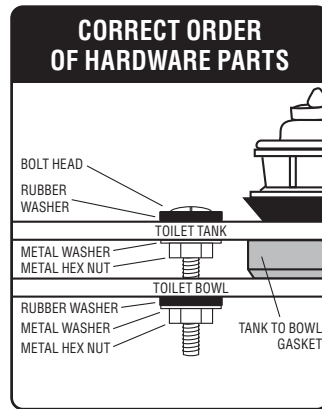


### 4 Installing Toilet Bolts

- A.** Place one rubber washer on each tank bolt.
- B.** Place tank bolts through bottom holes of tank.
- C.** For reinforced connection: Under tank, place metal washers on thin hex nuts and hand tighten to toilet tank. Caution: The thin metal hex nut should not touch the toilet bowl porcelain. If touching, stop and remove nuts and washers.
- D.** Set tank onto bowl. Place rubber washers, metal washers & hex nuts on each bolt under toilet bowl. Using tool, tighten hex nuts evenly until tank is snug and does not rock.

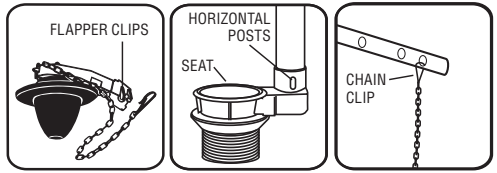
#### For Three Bolt Toilets

The kit contains two extra rubber washers for toilets that have three bolts. If you need a third bolt and nut, reuse one of your existing bolt sets along with the new rubber washers supplied.



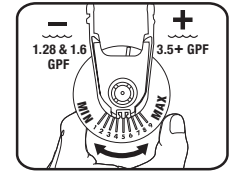
### 5 Installing New Flapper

Put flapper on seat and push down on flapper clips at the horizontal posts of overflow pipe. Attach chain clip to tank lever directly above flapper. Leave 1/2" of slack in chain.



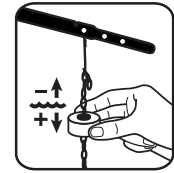
#### Adjustable Flapper (if applicable)

Turn the rubber portion left or right to select the best flush for your toilet. The higher the number set in front of the chain connection – the longer the flapper will stay open. Turn clockwise for greater flush volume. Turn counterclockwise for lower flush volume.



#### Adjustable Float Flapper (if applicable)

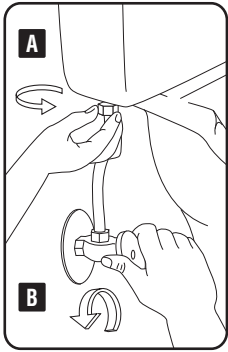
Raise or lower the float on the chain to select the best flush for your toilet. The lower the float (closer to the flapper), the longer the flapper will stay open and the greater the flush volume. The higher the float is set (further from the flapper), the lower the flush volume.



### 6 Attach Water Supply Connector

Inspect water supply connector. Replace it if it is worn or over 5 years old to prevent flooding and property damage.

- A.** Attach water supply coupling nut to fill valve. Turn coupling nut by hand until tight.  
**WARNING:** Do not over tighten the nut as it could damage fill valve or coupling nut, resulting in flooding and property damage. Fluidmaster Click Seal® connector is recommended: A perfect seal every time without over tightening.
- B.** Turn on water supply and check for leaks. If you find leaking at bottom of tank, turn nut just enough to stop leaking. Then flush toilet to check.



## TROUBLESHOOTING

#### LEAKING AT BOLTS AND/OR ON BASE OF TOILET

- Bolts are likely not tight enough or a step was missed in "INSTALLING TOILET BOLTS" section. Please ensure all steps were followed in "INSTALLING TOILET BOLTS" section. Tighten bolts further until tank does not rock and leak stops.

#### LEAK OCCURS WHEN TOILET IS FLUSHED

- This usually means that tank to bowl gasket is not centered and seated properly. Please ensure all steps were followed in "INSTALLING FLUSH VALVE" section. Tank to bowl gasket needs to fully cover locknut.
- Note: If you have a Gerber or Kohler two piece toilet, it is recommended you use a different tank to bowl gasket. **Gerber:** Use an extra thick Gerber gasket. **Kohler:** Use a triangular Kohler gasket. (Both Gerber and Kohler gaskets not included).

#### TOILET IS RUNNING WHEN NO FLUSH HAS TAKEN PLACE

- Please ensure all steps were followed in "INSTALLING NEW FLAPPER" section. Flapper needs to be clipped in to fall evenly on flush valve seat.
- Flush valve locknut may not be tight enough. Check locknut and use tools to ensure locknut is tightened 1/2 turn past hand tight.