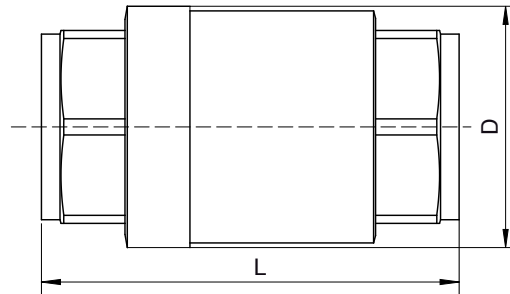
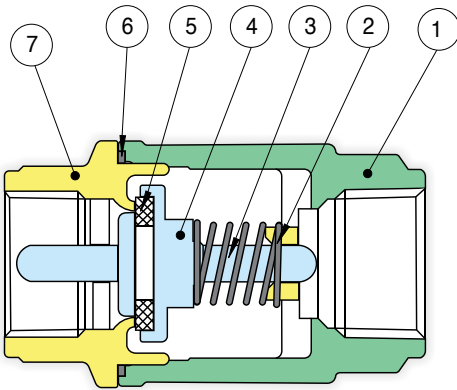


## SERIES S800 STAINLESS STEEL IN-LINE CHECK VALVE

High capacity, size 1/4"-2" 800 WOG.

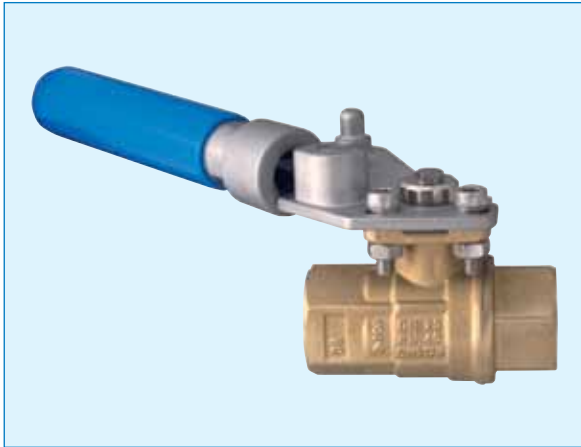
- Soft P.T.F.E seat for bubble tight shutoff, spring loaded for fast seating action.
- Low cracking pressure 1/2 psi.
- Flow profile designed to minimize head loss.
- Perfect seating both at high and low pressure, wide temperature range: +10°F to 450°F.
- Corrosion resistant-excellent for use on chemicals.
- ASTM A351-CF8M investment casting.
- Connection: FNPT x FNPT.
- 125WSP saturated steam.
- ANSI B1.20.1 threads.
- Dual guided stem & disc.

S800FV: SS foot valve design.



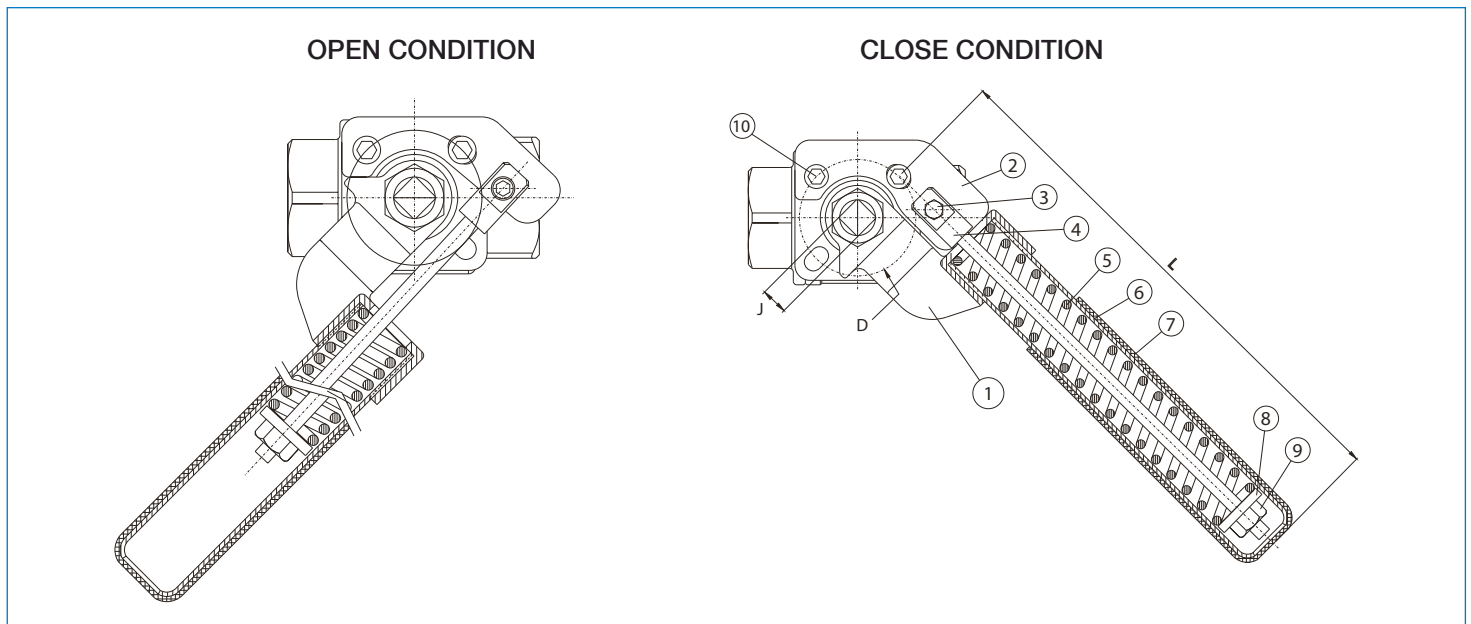
N Pos	PART NAME	MATERIAL	N PCS
1	BODY	ASTM A351-CF8M	1
2	SPRING	SS316	1
3	CENTER GUIDE	ASTM A351-CF8M	1
4	DISC	ASTM A351-CF8M	1
5	SEAT	P.T.F.E	1
6	GASKET	P.T.F.E	1
7	END CAP	ASTM A351-CF8M	1

SIZE	D	L	CV	psi	Lbs
1/4"	1.35	2.31	3.50	800	0.42
3/8"	1.35	2.31	3.50	800	0.42
1/2"	1.35	2.31	5.20	800	0.40
3/4"	1.81	2.87	10.00	800	0.85
1"	2.13	3.50	15.00	800	1.30
1 1/4"	2.46	4.18	24.50	800	2.50
1 1/2"	2.88	4.93	35.20	800	3.40
2"	3.56	6.00	52.00	800	6.00



## SERIES 250N SRL DEADMAN SPRING RETURN

- Lever brass 2-Way 2-piece, full port ball valve, 1/4" to 2".
- Temperature up to 366°F.
- Pressure rating 600 WOG - 150 WSP.
- Blow out proof stem.
- P.T.F.E seats and double O-ring stem packing.
- P.T.F.E seats with O-ring backing for low operating torque.
- Adjustable spring return lever.



N POS	PART NAME	MATERIAL	SIZE	L	J	D(ISO5211)	TORQUE
1	HANDLE HEAD	CF8	1/4"	170	9	F03/F04	15 Nm
2	ANCHOR	CF8M	3/8"	170	9	F03/F04	15 Nm
3	ANCHOR SCREW	STAINLESS STEEL 316	1/2"	170	9	F03/F04	15 Nm
4	SPRING ROD	STAINLESS STEEL 316	3/4"	170	9	F03/F04	15 Nm
5	SPRING	STAINLESS STEEL 301	1"	220	11	F04	22 Nm
6	HANDLE EXTENSION	STAINLESS STEEL 304	1 1/4"	220	11	F04	22 Nm
7	SLEEVE	PVC	1 1/2"	280	14	F05	35 Nm
8	WASHER	STAINLESS STEEL 304	2"	280	14	F05	35 Nm
9	HEX NUT	STAINLESS STEEL 304					
10	SOCKET HEAD SCREW	STAINLESS STEEL 304					

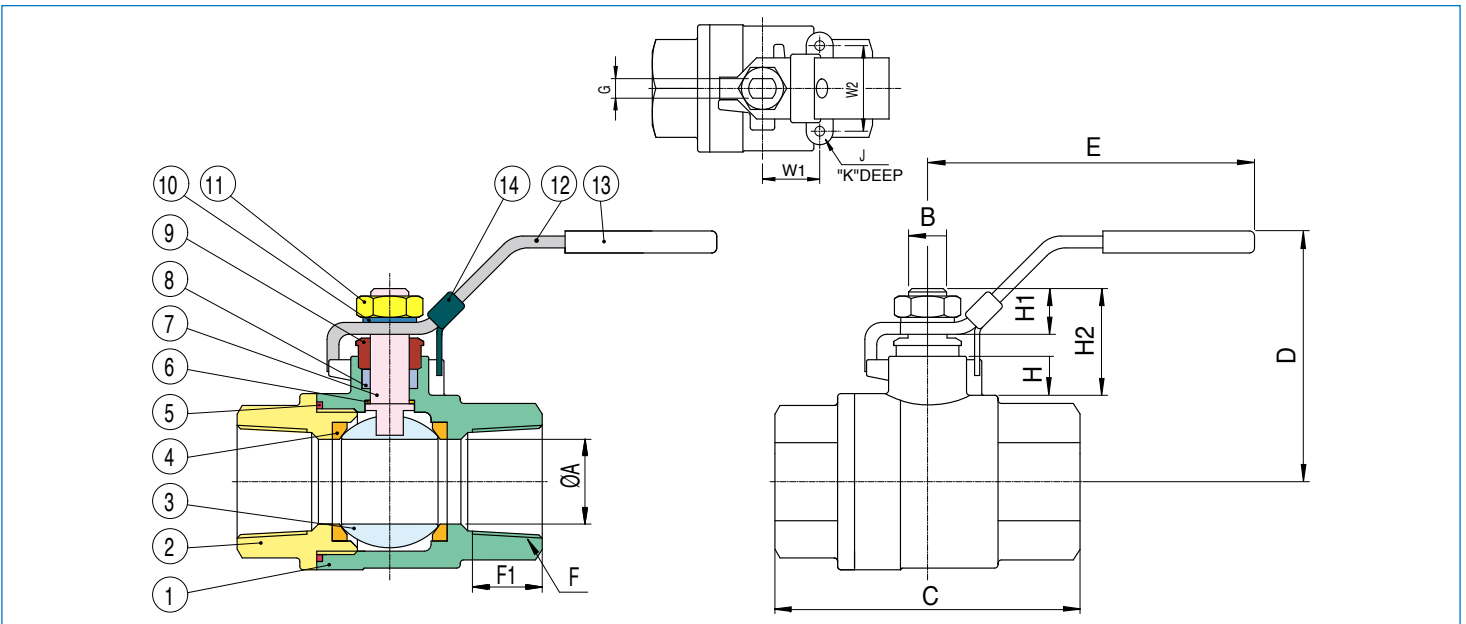
Valve materials and size: see table page 15 art. 250N

## SERIES 700 LL WITH LOCKING HANDLE



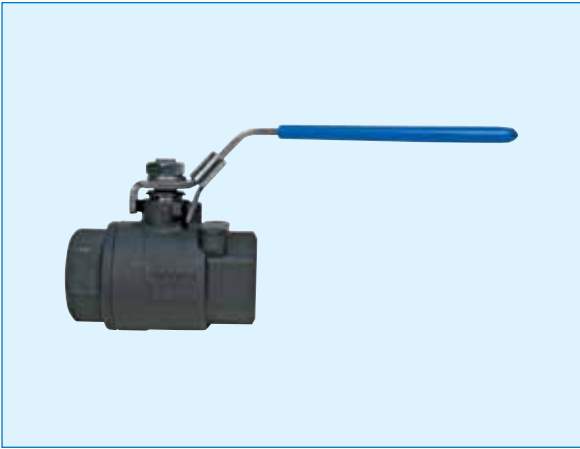
- 2 pc stainless steel ball valve.
- Threaded FNPT.
  - Full port sizes 1/4" to 2".
  - Self adjusting stem packing.
  - Blow-out proof stem design.
  - 100% air tested under water at 80 psi.
  - Working pressure is 2000 psi (1/4" to 1"), 1500 psi (1"1/4 to 2").
  - Temperature range -30°F to 450°F.
  - 150WSP.

7700LL: SEAL WELD VERSION AVAILABLE.



N Pcs	PART NAME	MATERIAL	N Pcs
1	BODY	CF8M	1
2	END CAP	CF8M	1
3	BALL	SS316	1
4	SEAT	R.T.F.E.	2
5	JOINT GASKET	P.T.F.E.	1
6	THRUST WASHER	P.T.F.E.	1
7	STEM	SS316	1
8	V RING PACKING	P.T.F.E.	1
9	GLAND BUSH	SS304	1
10	STEM WASHER	SS304	1
11	STEM NUT	SS304	1
12	HANDLE	SS304	1
13	HANDLE SLEEVE	VINYL	1
14	LOCKING DEVICE	SS304	1

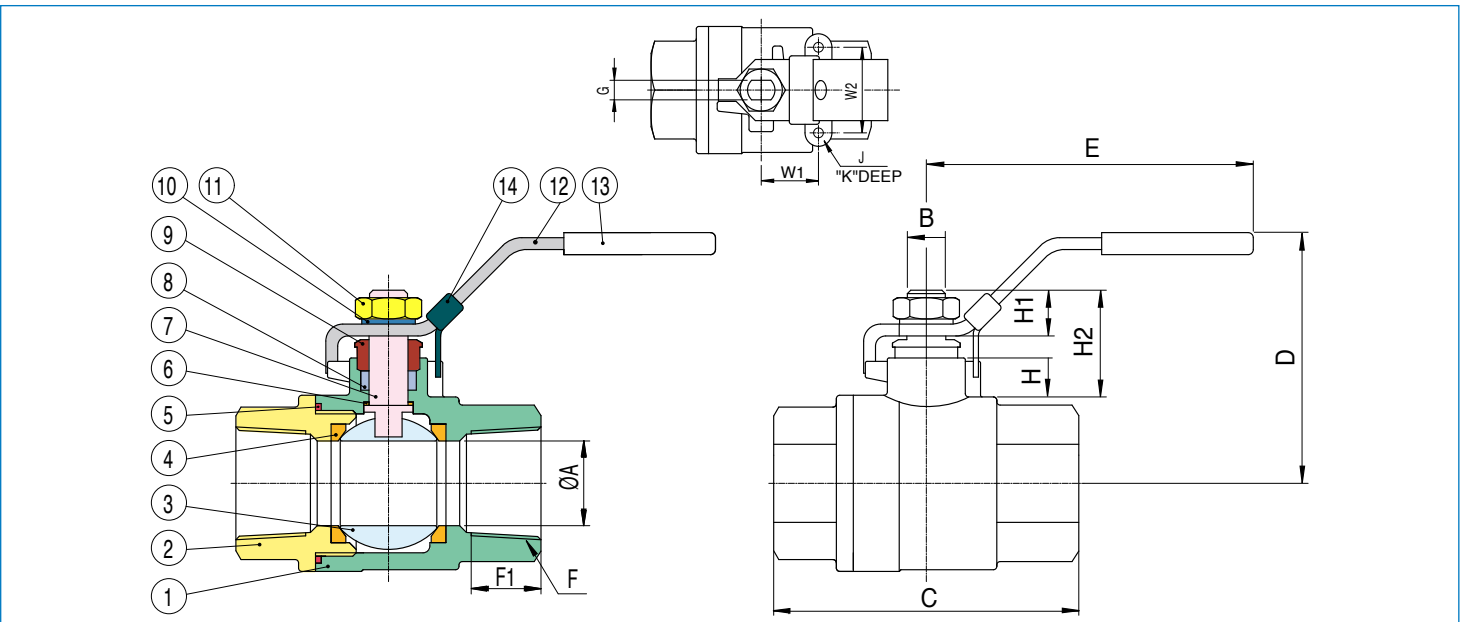
SIZE	ØA	B	C	D	E	F1	J	K	G	H	H1	H2	W1	W2	CV	Lbs
1/4"	0.45	0.31	2.16	1.96	3.93	0.59	10-24UNC	0.23	0.20	0.31	0.38	0.87	0.50	1.12	8	0.51
3/8"	0.49	0.31	2.16	1.96	3.93	0.59	10-24UNC	0.23	0.20	0.31	0.38	0.87	0.50	1.12	10	0.51
1/2"	0.59	0.37	2.55	2.36	5.11	0.62	10-24UNC	0.19	0.26	0.41	0.43	1.00	0.50	1.12	15	0.83
3/4"	0.78	0.37	2.93	2.51	5.11	0.66	10-24UNC	0.27	0.26	0.41	0.43	1.00	0.88	1.37	34	1.14
1"	0.98	0.43	3.46	2.79	6.49	0.94	10-24UNC	0.27	0.31	0.45	0.53	1.24	0.92	1.37	56	2.02
1"1/4	1.25	0.43	4.01	3.07	6.49	0.86	1/4-20UNC	0.27	0.31	0.45	0.53	1.24	1.00	1.50	85	2.70
1"1/2	1.49	0.55	4.33	3.38	7.48	0.88	1/4-20UNC	0.27	0.38	0.47	0.61	1.38	1.00	1.50	125	4.18
2"	1.96	0.55	4.92	3.74	7.48	1.02	1/4-20UNC	0.27	0.38	0.37	0.61	1.02	1.00	1.50	250	6.86



## SERIES 600 LL WITH LOCKING HANDLE

- 2 pc carbon steel ball valve.
- Threaded FNPT.
- Full port sizes 1/4" to 2".
- Self adjusting stem packing.
- Blow-out proof stem design.
- 100% air tested under water at 80 psi.
- Working pressure is 2000 psi (1/4" to 1"), 1500 psi (1 1/4" to 2").
- Temperature range -30°F to 450°F.
- 150WSP.

6600LL: SEAL WELD VERSION AVAILABLE.



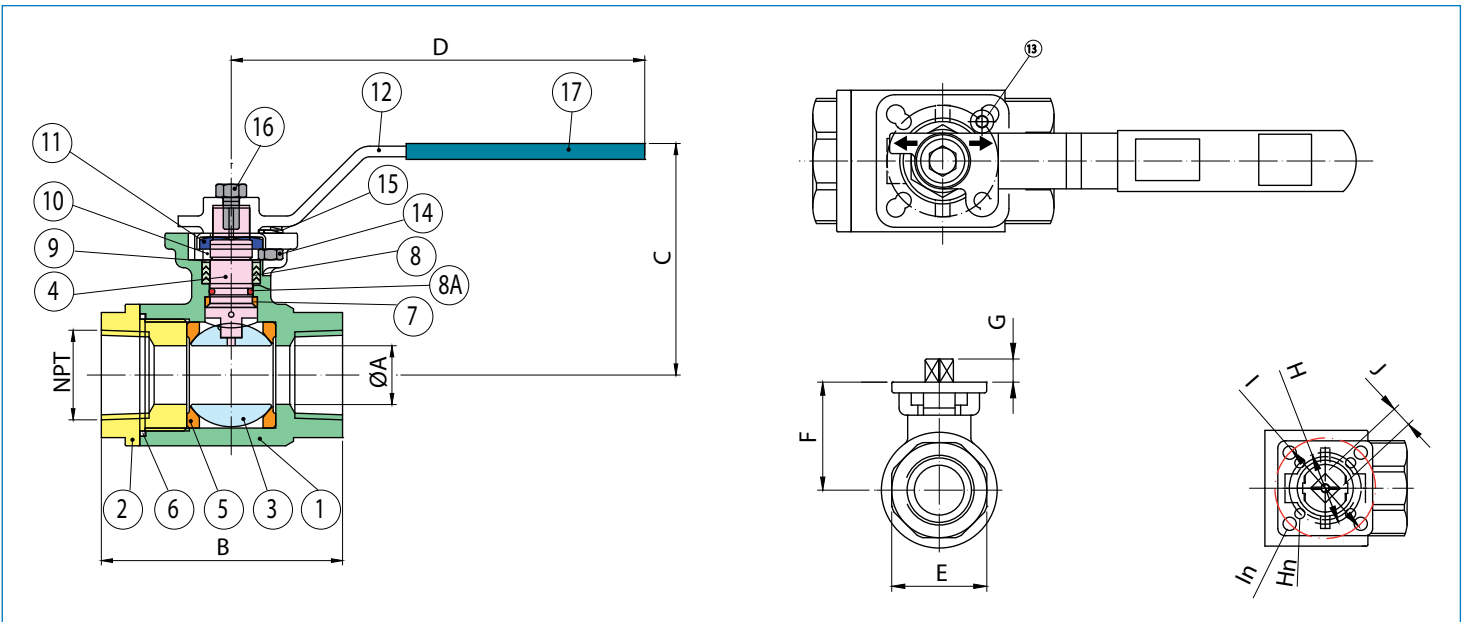
N Pcs	PART NAME	MATERIAL	N Pcs
1	BODY	WCB	1
2	END CAP	WCB	1
3	BALL	AISI 316	1
4	SEAT	R.T.F.E.	2
5	JOINT GASKET	P.T.F.E.	1
6	THRUST WASHER	P.T.F.E.	1
7	STEM	AISI 316	1
8	V RING PACKING	P.T.F.E.	1
9	GLAND BUSH	STEEL	1
10	STEM WASHER	STEEL	1
11	STEM NUT	STEEL	1
12	HANDLE	STEEL	1
13	HANDLE SLEEVE	VINYL	1
14	LOCKING DEVICE	SS304	1

SIZE	ØA	B	C	D	E	F1	J	K	G	H	H1	H2	W1	W2	CV	Lbs
1/4"	0.45	0.31	2.16	1.96	3.93	0.59	10-24UNC	0.23	0.019	0.31	0.38	0.87	0.50	1.12	8	0.51
3/8"	0.49	0.31	2.16	1.96	3.93	0.59	10-24UNC	0.23	0.19	0.31	0.38	0.87	0.50	1.12	10	0.51
1/2"	0.59	0.37	2.55	2.36	5.11	0.62	10-24UNC	0.19	0.25	0.41	0.43	1.00	0.50	1.12	15	0.83
3/4"	0.78	0.37	2.93	2.51	5.11	0.66	10-24UNC	0.27	0.25	0.41	0.43	1.00	0.88	1.37	34	1.14
1"	0.98	0.43	3.46	2.79	6.49	0.94	10-24UNC	0.27	0.31	0.45	0.53	1.24	0.92	1.37	56	2.02
1 1/4"	1.25	0.43	4.01	3.07	6.49	0.86	1/4-20UNC	0.27	0.31	0.45	0.53	1.24	1.00	1.50	85	2.70
1 1/2"	1.49	0.55	4.33	3.38	7.48	0.88	1/4-20UNC	0.27	0.38	0.47	0.61	1.38	1.00	1.50	125	4.18
2"	1.96	0.55	4.92	3.74	7.48	1.02	1/4-20UNC	0.27	0.38	0.37	0.61	1.02	1.00	1.50	250	6.86

## SERIES 3000 - 3100

**CARBON STEEL STAINLESS STEEL**

- Direct Mount 2-Way 2-Piece ball valve.
- Full port sizes 1/4" to 1 1/2", 2" reduced port.
  - Pressure rating 3000 psi (100°F)
  - Temperature range -20°F to 185°F.
  - Blow out proof stem/anti-static design.
  - ISO 5211 mounting pad.
  - Viton stem O-ring optional.
  - Nace MR-0175.



N Pos	PART NAME	MATERIAL	N PCS
1	BODY	CF8M/WCB	1
2	END CAP	CF8M/WCB	1
3	BALL	CF8M	1
4	ANTI-STATIC STEM	SS316	1
5	BALL SEAT	DELTRIN	2
6	BODY SEAL	P.T.F.E	1
7	THRUST WASHER	P.T.F.E	1
8	STEM PACKING	P.T.F.E	1
8a	O-RING	VITON	1
9	THRUST WASHER	50%SS - 50% P.T.F.E	1
10	STEM NUT	SS304	1
11	LOCK SADDLE	SS304	1
12	HANDLE	SS304	1
13	STOP BOLT	SS304	1
14	STOP NUT	SS304	1
15	STOP WASHER	SS304	1
16	HANDLE BOLD	SS304	1
17	HANDLE SLEEVE	VINYL	1

SIZE	ØA	B	C	D	E	F	G	H	Hn	I	In	J	Cv	in/Lbs	Lbs
1/4"	0.38	2.95	2.31	6.30	1.02	1.61	0.31	F03 1.42"	0.22	F04 1.65"	0.22	0.35	5.3	101	1.4
3/8"	0.38	2.95	2.31	6.30	1.02	1.61	0.31	F03 1.42"	0.22	F04 1.65"	0.22	0.35	8	104	1.4
1/2"	0.50	2.95	2.31	6.30	1.28	1.61	0.31	F03 1.42"	0.22	F04 1.65"	0.22	0.35	19	130	1.5
3/4"	0.69	3.19	2.60	6.30	1.51	1.72	0.31	F03 1.42"	0.22	F04 1.65"	0.22	0.35	35	156	2.0
1"	0.87	3.58	3.02	6.30	1.86	2.11	0.39	F04 1.65"	0.28	F05 1.97"	0.24	0.43	50	208	3.1
1 1/4"	1.14	4.33	3.19	6.30	2.32	2.32	0.39	F04 1.65"	0.28	F05 1.97"	0.24	0.43	110	390	4.8
1 1/2"	1.37	4.76	3.84	8.27	2.96	2.96	0.51	F05 1.97"	0.36	F07 2.76"	0.28	0.55	180	468	8.1
2"	1.37	5.71	4.14	8.27	2.96	2.96	0.51	F05 1.97"	0.36	F07 2.76"	0.28	0.55	210	468	10.5

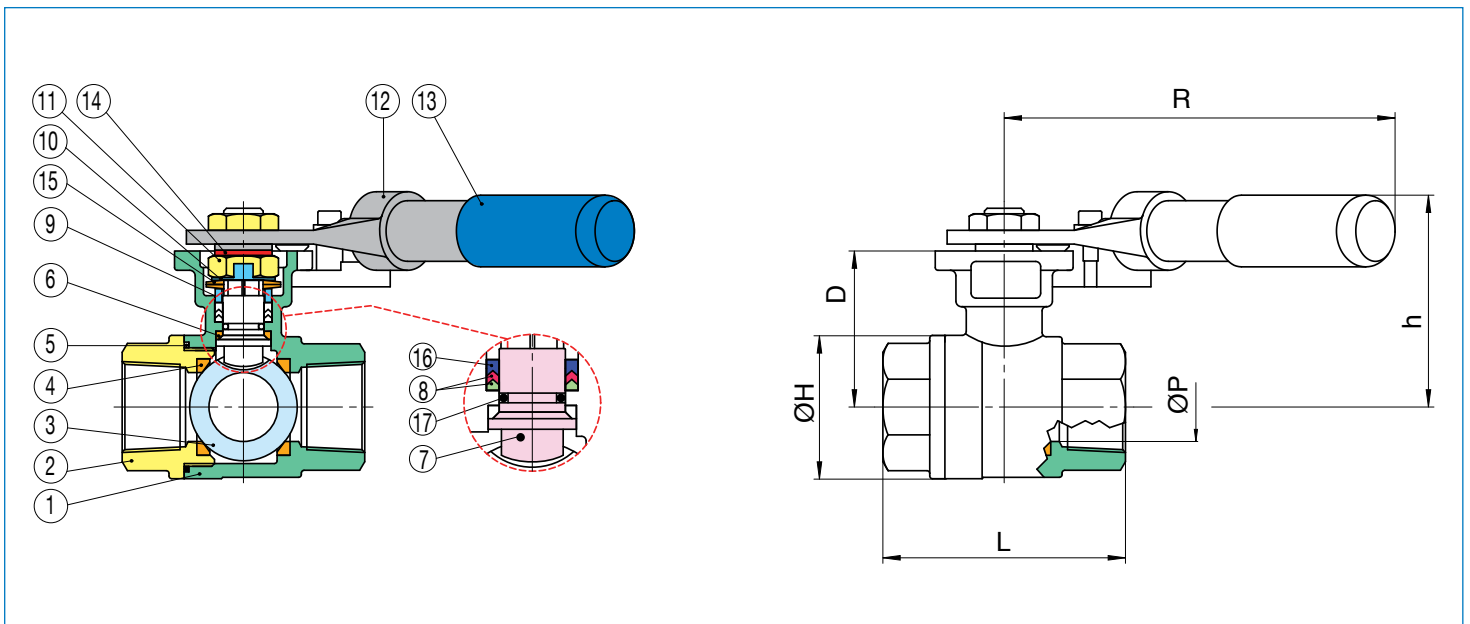
\* Varies with size.

## SERIES 2200 SRL STAINLESS STEEL BALL VALVE



Deadman spring return lever 2 way 2 piece ball valve.

- Full port sizes 1/4" to 2".
- CF8M type 316 investment cast body.
- Temperature range -40°F to 450°F.
- Working pressure to 1000 psi 1/4" - 2"
- Live loaded high cycle stem packing.
- Blow-out proof stem.
- Adjustable spring return lever.
- Anti-static design.



N Pos	PART NAME	MATERIAL	N PCS
1	BODY	CF8M	
2	END CAP	CF8M	
3	BALL	SS316	
4	SEAT	P.T.F.E.	
5	JOINT GASKET	P.T.F.E.	
6	STEM SEAL	R.T.F.E.	
7	STEM	SS316	
8	STEM PACKING	P.T.F.E.	
9	GLAND	SS304	
10	LOCK SADDLE	SS304	
11	STEM NUT	SS304	
12	HANDLE	SS304	
13	HALDLE SLEEVE	VINIYL	
14	STEM WASHER	SS304	
15	BELLEVILLE WASHER	SS301	
16	STEM PACKING	25% GLASS FIBER FILLED+P.T.F.E	
17	O-RING	VITON	

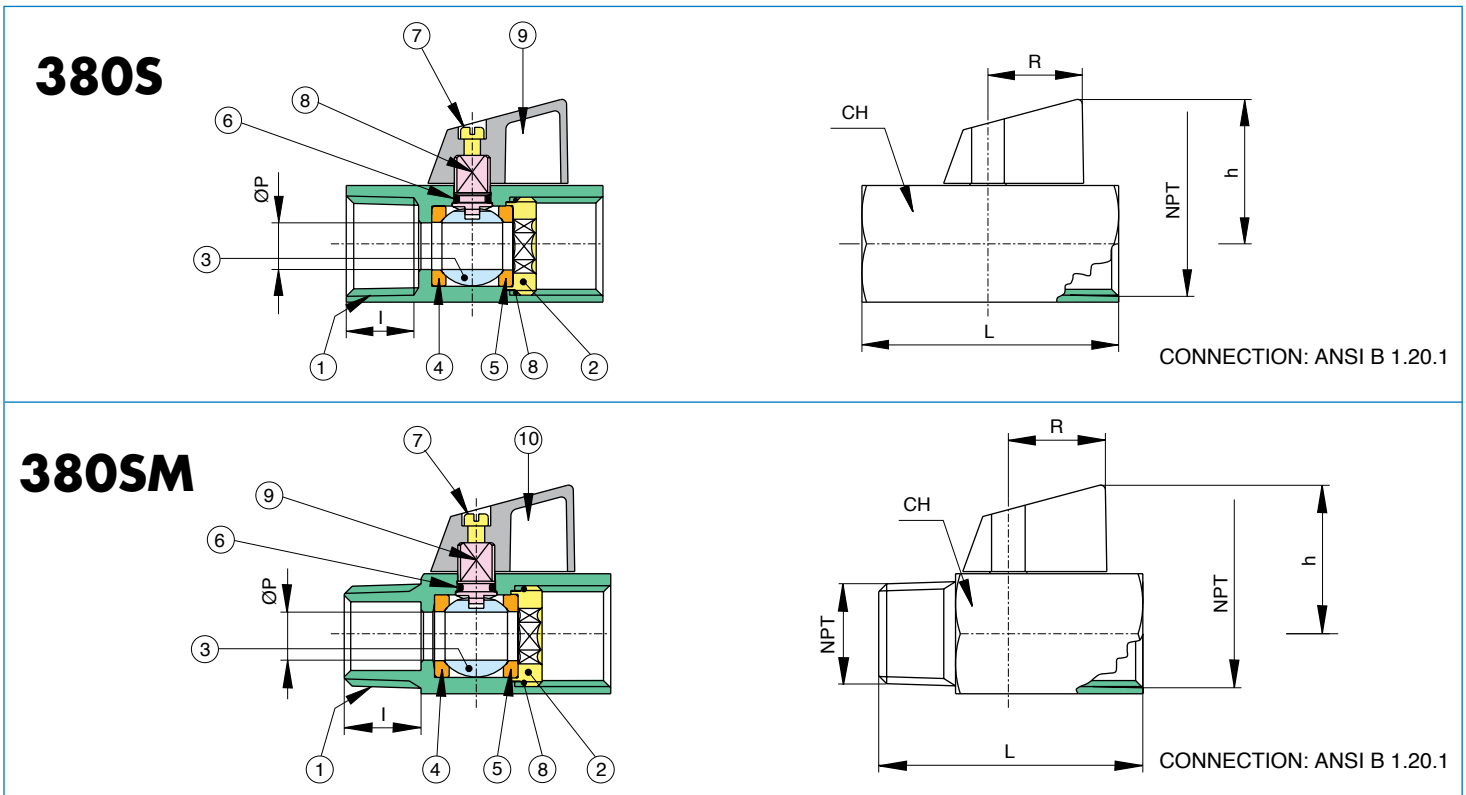
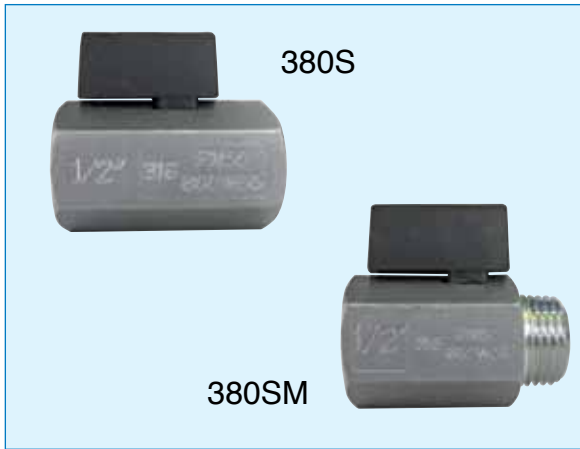
SIZE	ØA	R	D	ØH	h	L	ISO 5211	CV	psi	Lbs
1/4"	0.45	6.30	1.52	1.46	2.31	2.56	F03/F04	8	1000	1.80
3/8"	0.49	6.30	1.52	1.46	2.31	2.56	F03/F04	10	1000	1.80
1/2"	0.59	6.30	1.52	1.46	2.31	2.56	F03/F04	15	1000	1.70
3/4"	0.79	6.30	1.82	1.69	2.60	2.94	F03/F04	34	1000	2.00
1"	0.98	6.30	2.23	2.05	3.02	3.47	F04/F05	56	1000	2.80
1 1/4"	1.26	6.30	2.40	2.48	3.19	4.02	F04/F05	85	1000	3.80
1 1/2"	1.50	8.27	3.05	2.87	3.84	4.33	F05/F07	125	1000	6.60
2"	1.97	8.27	3.35	3.54	4.14	4.92	F05/F07	250	1000	8.80

## SERIES 380S - 380SM MINI BALL VALVE

316 stainless steel ball valve - mini series, standard port from 1/4" to 1/2".

- Pressure rating 800 psi WOG.
- Temperature up to 350°F.
- Stem O-ring viton, seal P.T.F.E
- P.T.F.E. seats.
- Stainless steel body, ball and stem.
- Wedge lever handle.

380S: FEMALE/FEMALE  
380SM: MALE/FEMALE



N Pos	PART NAME	MATERIAL	N PCS
1	BODY	AISI 316	1
2	RETAINING BUSH	AISI 316	1
3	BALL	AISI 316	1
4	BALL SEAT	P.T.F.E	1
5	BALL SEAT	P.T.F.E	1
6	O-RING	VITON	1
7	SCREW	SS304	1
8	O-RING	VITON	1
9	STEM	AISI316	1
10	HANDLE	ABS	1

SIZE	ØP	CH	l	h	L	R	CV	psi	Lbs 380S	Lbs 380SM
1/4"	0.31	0.82	0.39	1.16	1.69	0.80	5.00	450	0.42	0.36
3/8"	0.31	0.82	0.40	1.16	1.69	0.80	3.13	450	0.37	0.35
1/2"	0.39	0.98	0.53	1.24	2.16	0.80	6.26	450	0.37	0.35

## SERIES 710085 - 710064 - 710065 CARBON STEEL 3 PC BALL VALVE

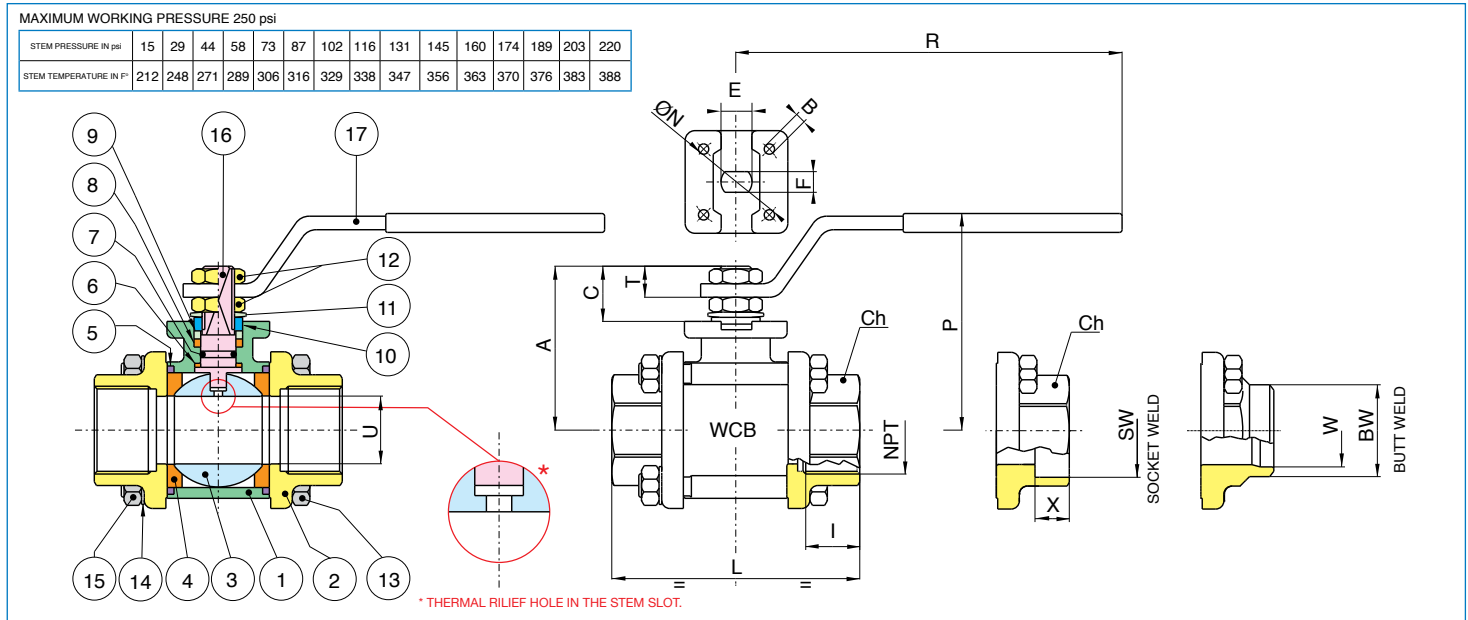


- 3 pc carbon steel A105 ball valve, stainless steel ball and stem.
- Full port sizes 1/4" to 4".
  - Blow out proof stem, adjustable stem packing.
  - 4 bolt actuator mounting pad.
  - 100% electronically tested in the open and closed position at 80 psi.
  - TUV T.A. Luft approved.
  - Steam pressure to 250 psi.

710085: THREADED.  
710064: SOCKET WELD.  
710065: BUTT WELD.

FOR STEAM

\* On request available with gas antistatic device.  
COMPLIES WITH NACE MR 0175/ISO 15156 AND NACE MR 0103.



PART NAME	MATERIAL	N PCS
1 BODY	ASTM A105- WCB	1
2 END CONNECTION	ASTM A105- WCB	2
3 BALL	AISI 304-CF8	1
4 BALL SEAT	P.T.F.E + 25% carbographite	2
5 SEAL	VITON	2
6 STEM SEAL	P.T.F.E + 25% carbographite	1
7 O-RING	FKM (Viton®)	1
8 STEM SEAL	P.T.F.E + 25% carbographite	1
9 PACKING GLAND	STEEL	1
10 END STOP	AISI 430 (1/4" - 2") STEEL (2"1/2 - 4")	2 1
11 SPRING WASHER	STEEL (2"1/2-4")	2
12 NUT	STEEL	2
13 BOLT	STEEL (1/4" - 2") STEEL (2"1/2 - 4")	4 6
14 WASHER	STEEL (1/4" - 2") STEEL (2"1/2 - 4")	4 6
15 NUT	STEEL (1/4" - 2") STEEL (2"1/2 - 4")	4 6
16 STEM	AISI 304	1
17 HANDLE	STEEL	1

SIZE	U	I	SW	X	BW	W	L	CH	R	P	A	C	T	E	F	ØN	B	CV	psi	Lbs
1/4"	0.39	0.43	-	-	-	-	2.24	0.86	4.35	1.96	1.37	0.53	0.35	0.31	0.19	-	-	6.26	250	0.61
3/8"	0.39	0.44	0.71	0.37	0.67	0.49	2.24	0.86	4.35	1.96	1.37	0.53	0.35	0.31	0.19	-	-	6.96	250	0.61
1/2"	0.59	0.59	0.88	0.37	0.83	0.62	2.55	1.06	5.17	2.51	1.85	0.59	0.39	0.39	0.27	1.41	0.23	18.90	250	0.88
3/4"	0.78	0.64	1.09	0.43	1.05	0.82	2.99	1.25	5.17	2.67	2.02	0.59	0.39	0.39	0.27	1.65	0.21	34.22	250	1.32
1"	0.98	0.75	1.35	0.50	1.31	1.04	3.62	1.61	6.87	3.09	2.36	0.76	0.49	0.47	0.31	1.65	0.23	49.88	250	2.42
1"1/4	1.25	0.84	1.70	0.56	1.66	1.38	4.19	1.96	6.87	3.28	2.53	0.76	0.49	0.47	0.31	1.65	0.21	103.24	250	3.36
1"1/2	1.49	0.84	1.94	0.62	1.90	1.61	4.56	2.16	9.86	3.93	3.11	0.94	0.64	0.62	0.39	1.96	0.25	266.80	250	4.61
2"	1.96	1.01	2.44	0.68	2.37	2.06	5.35	2.75	9.86	4.21	3.38	0.94	0.64	0.62	0.39	1.96	0.25	307.40	250	7.03
2"1/2	2.55	1.18	3.01	0.78	2.87	2.46	6.04	3.54	12.65	4.98	4.05	1.10	0.70	0.78	0.55	2.75	M8	626.40	250	18.24
3"	3.15	1.31	3.52	0.78	3.50	3.06	7.08	4.13	12.65	5.41	4.48	1.10	0.70	0.78	0.55	2.75	M8	1012.68	250	29.45
4"	3.93	1.54	4.52	0.78	4.50	4.02	8.54	5.11	15.01	6.16	5.39	1.35	0.86	0.94	0.70	4.01	M10	1612.40	250	46.79



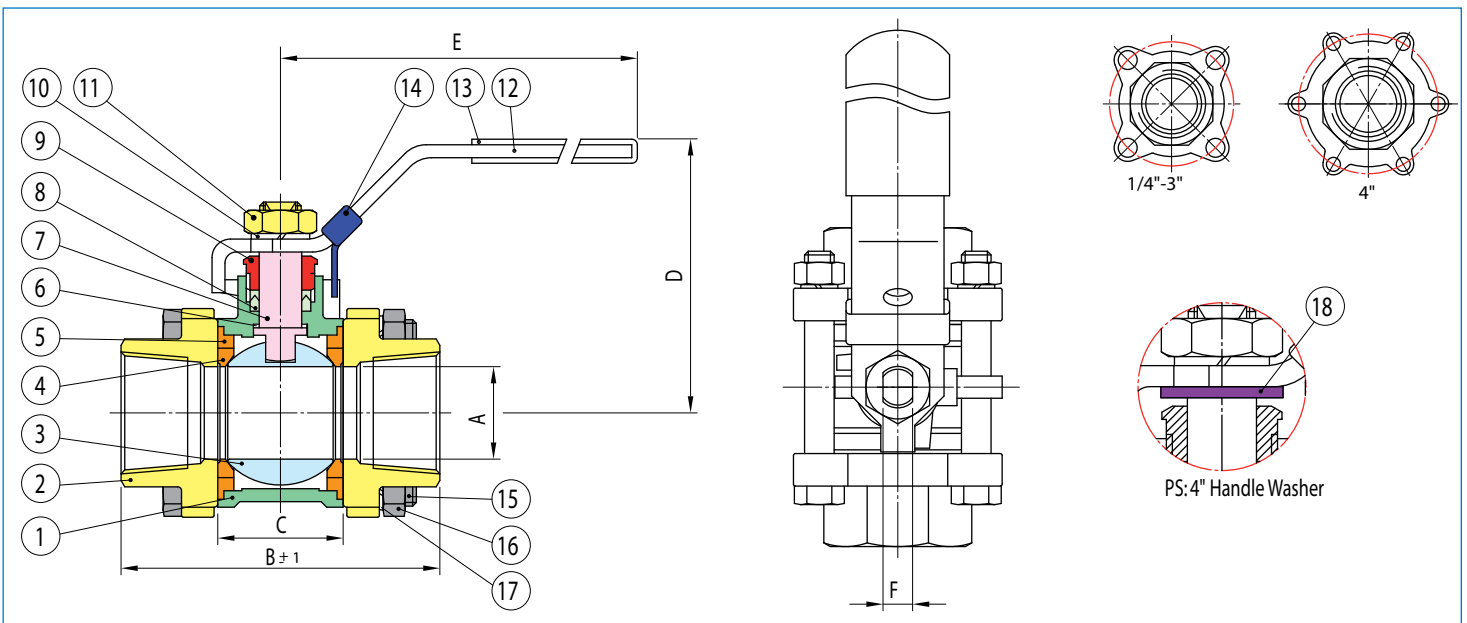


**SERIES 610LL WCB-FNPT - 710LL CF8M-FNPT**  
**SERIES 611LL WCB-SW - 711LL CF8M-SW**  
**SERIES 612LL WCB-BW - 712LL CF8M-BW**

Direct mount 3-piece ball valve, with locking lever.

For general industrial and chemical applications.

- Full port sizes 1/4" to 4".
- Pressure rating 1/4" to 2" 1000 psi, 2"1/2 to 4" 800 psi.
- Temperature range -60°F + 440°F.
- Blow out proof stem, adjustable multi-layer V-ring stem packaging.
- P.T.F.E. seats, packing and thrust washer.
- 4 bolt actuator mounting pad.
- Dual position locking lever.
- 150 WSP saturated steam.



N Pos	PART NAME	MATERIAL	N PCS
1	BODY	WCB/CF8M	1
2	END CAP	WCB/CF8M	2
3	BALL	SS316	1
4	SEAT	TFM1600	2
5	JOIN GASKET	P.T.F.E	2
6	STEM SEAL	P.T.F.E	1
7	STEM	SS316	1
8	STEM PACKING	P.T.F.E	*
9	GLAND NUT	SS304	1
10	STEM WASHER	SS304	1
11	STEM NUT	SS304	1
12	HANDLE	SS304	1
13	HANDLE SLEEVE	VINILY	1
14	LOCKING DEVICE	SS304	1
15	BOLT	SS304	*
16	BOLT NUT	SS304	*
17	BLOT WASHER	SS304	*
18	HANDLE WASHER	SS304	1

SIZE	A	B	C	D	E	F	Cv	Lbs
1/4"	0.46	2.23	0.73	2.13	4.02	0.20	8	0.77
3/8"	0.50	2.23	0.73	2.13	4.02	0.20	10	0.77
1/2"	0.59	2.59	0.93	2.52	5.20	0.26	15	1.23
3/4"	0.79	3.00	1.10	2.64	5.20	0.26	34	1.65
1"	0.98	3.39	1.34	2.95	6.58	0.32	56	2.29
1"1/4	1.26	4.05	1.67	3.15	6.58	0.32	85	3.84
1"1/2	1.50	4.70	2.09	3.54	7.56	0.38	125	5.31
2"	1.97	5.17	2.54	3.86	7.56	0.38	250	8.07
2"1/2	2.56	6.46	3.43	5.39	9.92	0.47	320	15.65
3"	3.15	7.19	3.90	5.79	9.92	0.47	580	23.15
4"	3.94	9.28	5.00	6.89	11.10	0.59	1020	45.78

\* Varies with size.





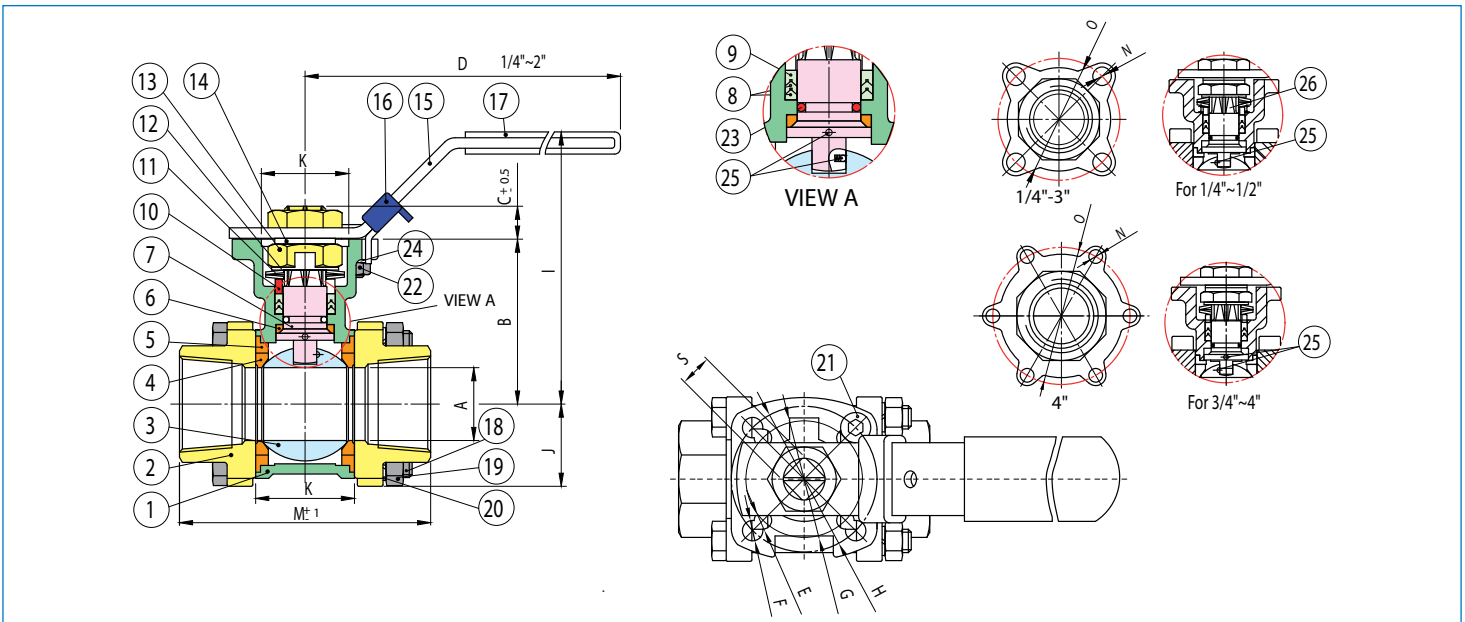
## SERIES 620LL WCB-FNPT - 720LL CF8M-FNPT

## SERIES 621LL WCB-SW - 721LL CF8M-SW

## SERIES 622LL WCB-BW - 722LL CF8M-BW

Direct mount 3-piece valve, with locking lever.

- Full port sizes 1/4" to 4"
- Direct mount ISO 5211/DIN 3337 for automation.
- Pressure rating 1/4" to 2" 1000 psi, 2 1/2" to 4" 800 psi.
- Temperature range -60°F to +440° F.
- Blow out proof stem, multi-layer V-ring adjustable stem packing.
- Multi-direction square drive locking lever.
- Dual mounting hole patterns.
- 150 WSP saturated steam.



N Pos	PART NAME	MATERIAL	N POS
1	BODY	CF8M/WCB	1
2	END CAP	CF8M/WCB	2
3	BALL	SS316	1
4	SEAT	TFM1600	2
5	JOIN GASKET	P.T.F.E	2
6	STEM SEAL	R.T.F.E	1
7	STEM	SS316	1
8	STEM PACKING	P.T.F.E	1
9	STEM PACKING	25% fiberglass +P.T.F.E	*
10	GLAND	SS304	1
11	BELLEVILLE WASHER	SS304	2
12	LOCK SADDLE	SS304	1
13	STEM NUT	SS304	2
14	STEM WASHER	SS304	1
15	HANDLE	SS304	1
16	LOCKING DEVICE	SS304	1
17	HANDLE SLEEVE	VINYL	1
18	BOLT	SS304	*
19	BOLT NUT	SS304	*
20	BLOT WASHER	SS304	*
21	STOP PIN	SS304	1
22	PIN NUT	SS304	1
23	O-RING	VITON	1
24	WASHER	SS304	1
25	ANTI-STATIC DEVICE	SS316	1
26	SPRING	SS316	1

\* Varies with size

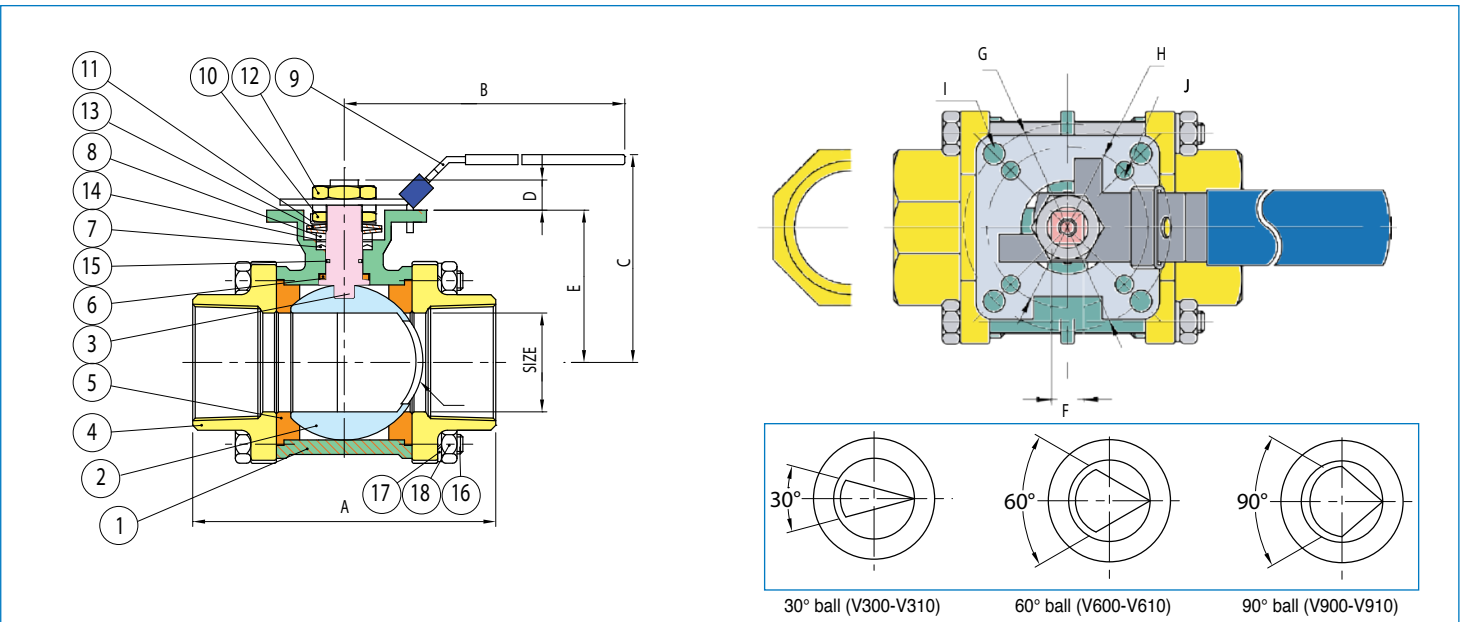
SIZE	ØA	B	C	D	ØE	ØF	ØG	ØH	I	J	K	L	M	ØN	ØO	S in	S mm	Cv	Lbs	ISO 5211
1/4"	0.46	1.66	0.25	5.47	0.24	0.24	1.42	1.65	3.03	0.92	0.93	0.98	2.51	1.81	0.34	0.35	9	8	55	F03/F04
3/8"	0.50	1.66	0.25	5.47	0.24	0.24	1.42	1.65	3.03	0.92	0.93	0.98	2.51	1.81	0.34	0.35	9	10	55	F03/F04
1/2"	0.59	1.66	0.25	5.47	0.24	0.24	1.42	1.65	3.03	0.92	0.93	0.98	2.59	1.81	0.34	0.35	9	15	55	F03/F04
3/4"	0.79	1.89	0.27	5.47	0.24	0.24	1.42	1.65	3.27	1.00	1.10	0.98	3.00	2.05	0.34	0.35	9	34	69	F03/F04
1"	0.98	2.23	0.44	6.45	0.24	0.28	1.65	1.97	3.78	1.11	1.34	1.18	3.39	2.36	0.34	0.43	11	56	127	F04/F05
1 1/4"	1.26	2.34	0.44	6.45	0.24	0.28	1.65	1.97	3.94	1.36	1.67	1.18	4.05	2.89	0.43	0.43	11	85	173	F04/F05
1 1/2"	1.50	3.05	0.56	8.47	0.30	0.35	1.97	2.76	5.00	1.55	2.10	1.38	4.70	3.37	0.47	0.55	14	125	243	F05/F07
2"	1.97	3.35	0.56	8.47	0.30	0.35	1.97	2.76	5.28	1.86	2.54	1.38	5.17	4.09	0.52	0.55	14	250	346	F05/F07
2 1/2"	2.56	4.28	0.67	11.81	0.39	0.47	2.76	4.02	6.58	2.30	3.43	2.17	6.46	5.12	0.60	0.67	17	320	518	F07/F010
3"	3.15	4.63	0.67	14.57	0.39	0.47	2.76	4.02	6.93	2.72	3.90	2.17	7.19	6.12	0.68	0.67	17	580	806	F07/F010
4"	3.94	5.22	0.67	14.57	0.39	0.47	2.76	4.02	7.56	3.76	5.00	2.17	9.28	7.40	0.68	0.67	17	1020	1094	F07/F010



## SERIES V300 - V600 - V900

Stainless steel direct mount 3 piece V-ball valve.

- ASTM A-CF8M 316L stainless steel body.
- 50% stainless steel - 50% P.T.F.E seats.
- Class VI shut-off.
- Temperature range -18F° to 428°F.
- 1000 psi (1/2" to 2"), 800 psi (2"1/2 to 4").
- Full port 30, 60, or 90 degree flow angles.
- ISO 5211/DIN 3337 direct mount.
- Blow-out proof stem, anti-static device.
- Sizes 1/2" thru 4", (1/4"-3/8" FNPT only).
- End connections: FNPT or socket weld.



N Pos	PART NAME	MATERIAL	N PCS	SIZE	A	B	C	D	E	F	G	H	I	J	Lbs
1	BODY	ASTM A351 Gr. CF8M	1	1/2"	2.50	4.41	2.87	0.33	1.46	0.35	1.97	1.42	0.28	0.24	1.3
2	BALL	ASTM A351 Gr. CF8M	1	3/4"	2.85	4.41	3.18	0.33	1.77	0.35	1.97	1.42	0.28	0.24	1.6
3	STEM	S.S. 316	1	1"	3.19	5.35	3.56	0.45	2.11	0.35	1.97	1.65	0.28	0.24	2.3
4	END CAP	ASTM A351 Gr. CF8M	2	1"1/4	3.72	7.28	3.89	0.45	2.32	0.35	1.97	1.65	0.28	0.24	3.4
5	SEAT	50% S.S. - 50% P.T.F.E	2	1"1/2	4.25	7.79	4.54	0.55	2.94	0.55	2.76	1.9	0.35	0.28	5.5
6	THRUST WASHER	P.T.F.E +50% GF	1	2"	4.78	7.79	4.88	0.54	3.29	0.55	2.76	1.97	0.35	0.28	7.6
7	STEM PACKING	S.S. 304	1	2"1/2	6.20	10.4	6.10	0.1	4.28	0.67	4.02	2.76	0.43	0.35	14.1
8	GLAND BUSHING	S.S. 304	1	3"	7.48	10.4	8.21	0.71	4.66	0.67	4.02	2.76	0.43	0.35	24.6
9	HANDLE	S.S. 304	1	4"	8.86	12.8	8.53	0.91	6.06	0.67	4.02	2.76	0.43	0.35	48.4
10	STEM NUT	S.S. 304	1												
11	HANDLE WASHER	S.S. 304	1												
12	HANDLE NUT	S.S. 304	1												
13	BELLEVEILLE WASHER	S.S. 304-CSP	2												
14	PACKING FOLLOWER	P.T.F.E +25% GF	1												
15	STEM O-RING	VITON	1												
16	BODY BOLT	S.S. 304	*												
17	BOLT WASHER	S.S. 304	*												
18	BOLT NUT	S.S. 304	*												

\* Varies with size.



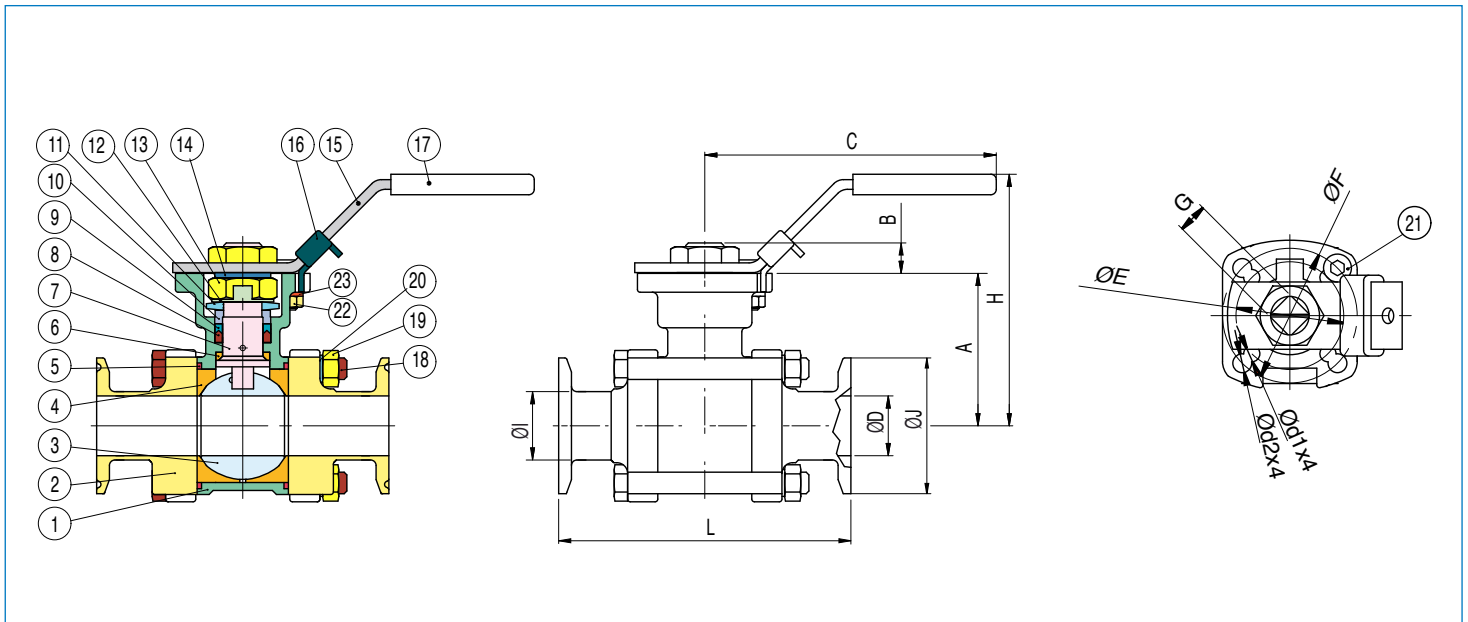


## SERIES 770 NON-CAVITY FILLED

## SERIES 771 CAVITY FILLED

### SANITARY BALL VALVE

- Stainless steel ball valve, high performance 3 piece sanitary ball valves; full port sizes.
- Blow-out proof stem.
  - ISO 5211 direct mount pad.
  - Working pressure 1000 psi WOG (1/2" to 2") 800 psi WOG (2 1/2" to 4").
  - Temperature range -60°F to 450°F.
  - Anti-Static.
  - International polishing to ra 15 tri-clamp style end connections.
  - Ball valves comply with standards: ISO 5211, ANSI B 16.11, MSS SP-25, MSS SP-55.
  - Maintenance free live loaded double sealing stem.



N Pos	PART NAME	MATERIAL	N PCS
1	BODY	CF3M	1
2	END CONNECTION	CF3M	2
3	BALL	SS316L	1
4	SEATS	P.T.F.E	2
5	JOINT GASKET	P.T.F.E	2
6	STEM SEAL	R.T.F.E	1
7	STEM	SS316L	1
8	GLAND PACKING	P.T.F.E	2
9	GLAND PACKING	P.T.F.E+GLASS	1
10	GLAND BUSH	SS304	1
11	BELLEVILLE WASHER	SS301	2
12	STOP WASHER	SS304	1
13	STEM NUT	SS304	2
14	STEM WASHER	SS304	1
15	HANDLE	SS304	1
16	LOCKING DEVICE	SS304	1
17	HANDLE SLEEVE	VINYL	1
18	BOLT	SS304	4
19	BOLT NUT	SS304	4
20	BOLT WASHER	SS304	4
21	STOP PIN	SS304	1
22	PIN NUT	SS304	1
23	WASHER	SS304	1

SIZE	ØD	ØI	ØJ	A	B	C	ØE	ØF	G	L	H	Ød1	Ød2	psi	ISO5211	Lbs
1/2"	0.37	0.50	0.99	1.65	0.25	5.47	1.41	1.65	0.35	3.50	3.03	0.23	0.23	1000	F03/F04	1.67
3/4"	0.62	0.74	0.99	1.88	0.27	5.47	1.41	1.65	0.35	4.00	3.26	0.23	0.23	1000	F03/F04	1.91
1"	0.87	1.00	1.98	2.22	0.44	6.49	1.65	1.96	0.43	4.50	3.77	0.23	0.27	1000	F04/F05	3.17
1 1/2"	1.37	1.5	1.98	3.05	0.55	8.46	1.96	2.75	0.55	5.51	5.00	0.29	0.35	1000	F05/F07	7.24
2"	1.87	2.00	2.51	3.35	0.55	8.46	1.96	2.75	0.55	6.25	5.27	0.29	0.35	1000	F05/F07	10.10
2 1/2"	2.37	2.50	3.04	4.27	0.67	11.81	2.75	4.01	0.66	6.85	6.57	0.39	0.47	800	F05/F07	21.80
3"	2.87	3.00	3.57	4.63	0.71	14.56	2.75	4.01	0.66	7.60	6.92	0.39	0.47	800	F05/F07	29.00
4"	3.83	4.00	4.68	5.21	0.67	14.56	2.75	4.01	0.66	8.89	7.55	0.39	0.47	800	F05/F07	46.50



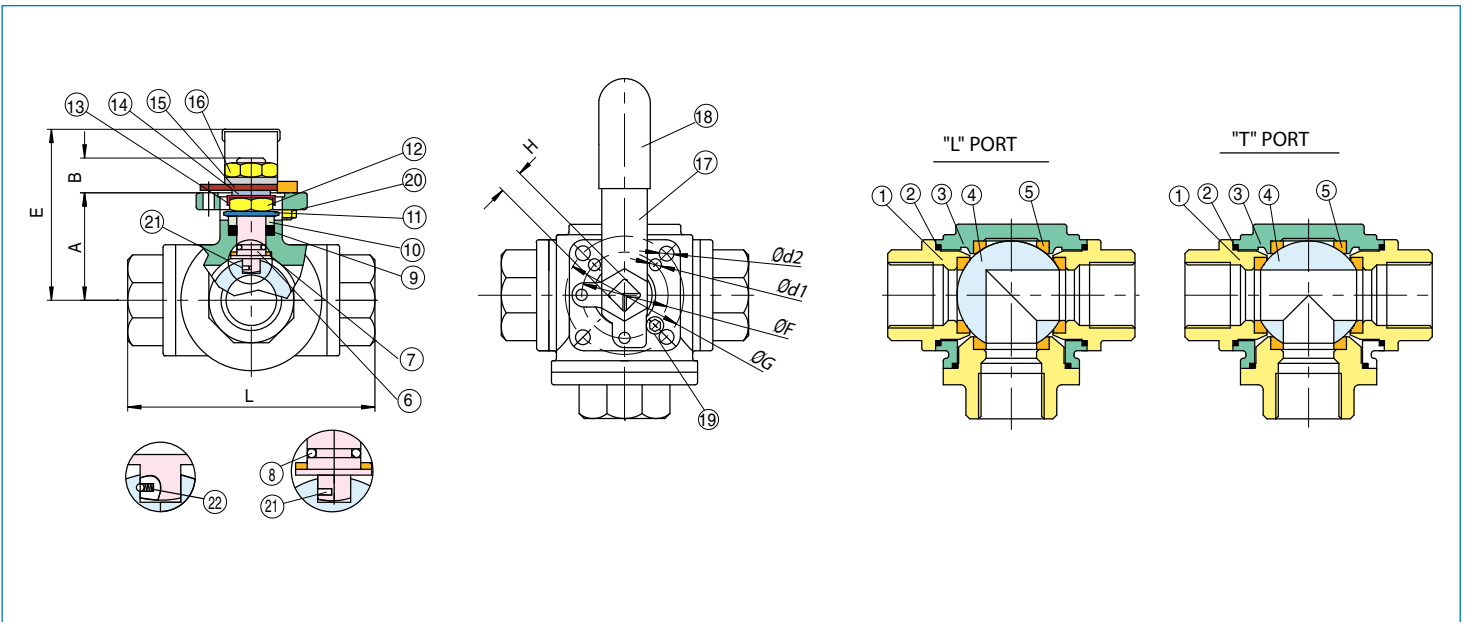
## SERIES 955N (T) - 965N (L) • STANDARD PORT

## SERIES 956N (T) - 966N (L) • FULL PORT

### DIRECT MOUNT 3 WAY BALL VALVE

Direct mount stainless steel CF8M three way ball valve with ISO 5211 pad, full and reduced port in sizes 1/2" to 2".

- Self adjusting stem packing.
- Blow-out proof stem design.
- 100% air tested under water at 80 psi.
- Working pressure is 1000 psi (1/4" to 1"), 800 psi (1/4" to 2").
- Temperature range -20°F to 450°F.
- ISO 5211 mounting pad.

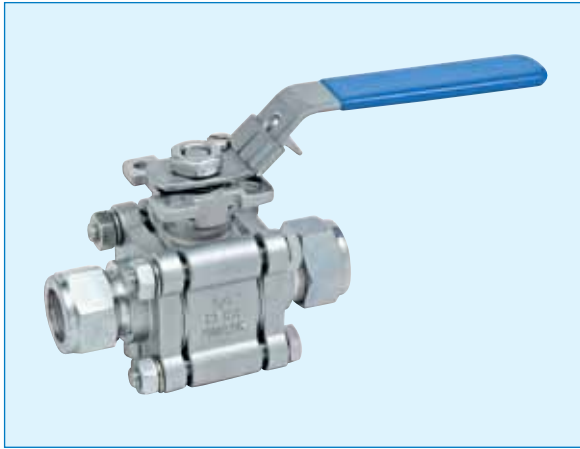


	PART NAME	MATERIAL	N PCS
1	END CAP	A351 CF8M	3
2	GASKET	P.T.F.E.	3
3	BODY	A351 CF8M	1
4	BALL	SS316	1
5	SEATS	R.T.F.E.	4
6	STEM	SS316	1
7	STEM SEAL	R.P.T.F.E.	1
8	O-RING	VITON	1
9	STEM PACKING	P.T.F.E.	1
10	GLAND	SS304	1
11	DISK WASHER	SS301	2
12	STEM NUT	SS304	1
13	NUT STOP	SS304	1
14	SPACE WASHER	SS304	1
15	PLATE STOP	SS304	1
16	HANDLE NUT	SS304	1
17	HANDLE	SS304	1
18	HANDLE SLEEVE	VINYL	1
19	STOPPER	SS304	1
20	PIN NUT	SS304	1
21	INSERT PIN	SS316	1
22	ANTISTATIC DEVICE	SS316	1

FULL PORT	STANDARD PORT	A	B	C	Ød1	Ød2	E	ØF	ØG	H	K	L	Port	psi	ISO5211	Lbs 955-965	Lbs 956-966
1/4"	-	1.45	0.40	5.11	0.23	0.23	2.44	1.41	1.65	0.35	1.41	2.83	0.43	1000	F03/F04	-	1.41
3/8"	1/2"	1.45	0.40	5.11	0.23	0.23	2.44	1.41	1.65	0.35	1.41	2.83	0.47	1000	F03/F04	-	1.41
1/2"	3/4"	1.65	0.45	5.11	0.23	0.23	2.51	1.41	1.65	0.35	1.63	3.26	0.59	1000	F03/F04	1.41	1.87
3/4"	1"	1.90	0.59	6.49	0.23	0.27	3.22	1.65	1.96	0.43	1.94	3.89	0.78	1000	F04/F05	1.87	3.21
1"	1 1/4"	2.18	0.55	6.49	0.23	0.27	3.50	1.65	1.96	0.43	2.20	4.40	0.98	1000	F04/F05	3.21	4.80
1 1/4"	1 1/2"	2.48	0.64	8.07	0.27	0.36	3.85	1.96	2.75	0.55	2.46	4.92	1.25	800	F05/F07	4.80	7.23
1 1/2"	2"	2.88	0.62	8.07	0.27	0.36	4.25	1.96	2.75	0.55	2.93	5.86	1.49	800	F05/F07	7.23	11.55
2"	-	3.63	0.88	12.79	0.36	0.44	5.51	2.75	4.01	0.66	3.42	6.85	1.96	800	F07/F10	11.55	20.89

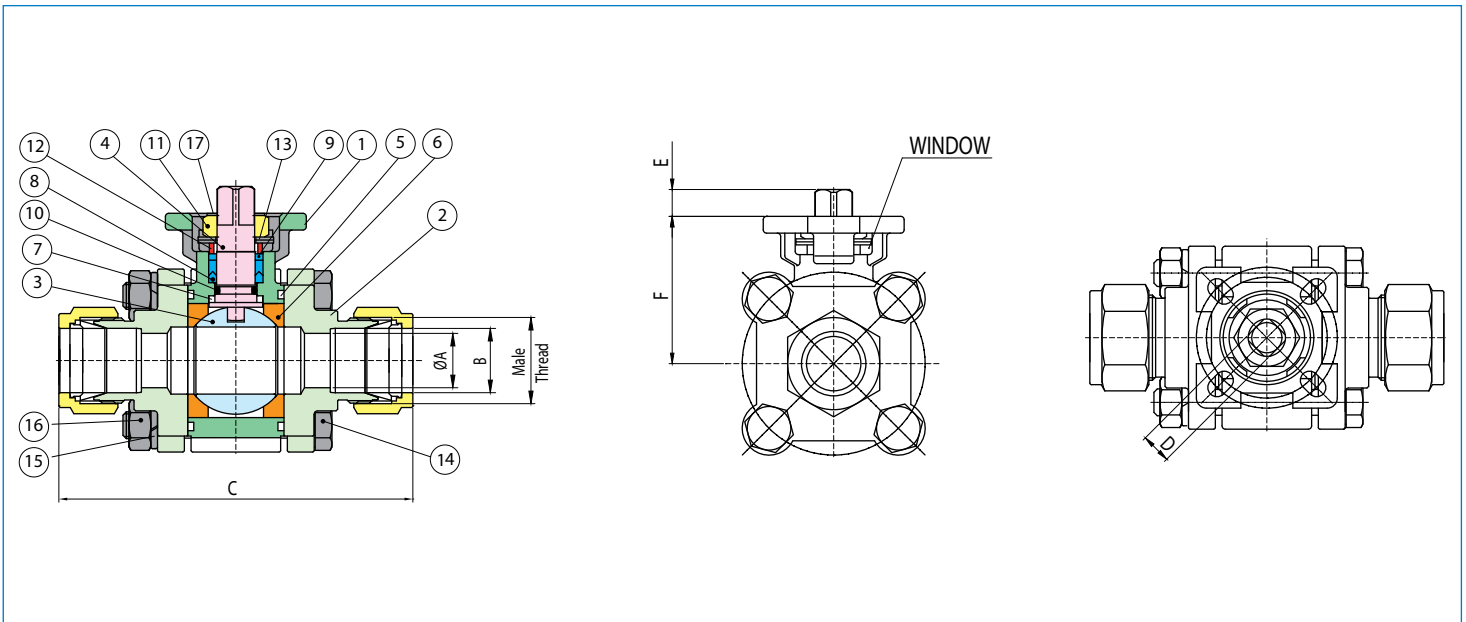


## SERIES 1300 STAINLESS STEEL



2 way 3 piece stainless steel standard port instrument valve.

- Standard port sizes 1/4" to 3/4".
- Working pressure to 2000 psi.
- Temperature range -40°F to 450°F.
- High performance adjustable packing.
- ISO 5211 mounting pad.
- Extremely high cycle life.
- Compression ends with heat treated ferrules.



N Pcs	PART NAME	MATERIAL	N PCS
1	BODY	CF8M	1
2	END CAP	CF8M	2
3	BALL	SS316	1
4	STEM	SS316	1
5	PACKING	P.T.F.E	2
6	SEAT	TFM1600	2
7	STEM SEAL	P.T.F.E	1
8	V-RING PACKING	P.T.F.E	1 SET
9	BUSHING	50%SS-50%P.T.F.E	1
10	O-RING	VITON	1
11	STEM NUT	SS304	1
12	GLAND	SS304	1
13	BELLEVILLE WASHER	SS304	2
14	BOLT	SS304	4
15	WASHER	SS304	4
16	BOLT NUT	SS304	4
17	LOCK SADDLE	SS304	1

SIZE	ØA	B	C	D	E	F	ISO 5211	Cv	in/Lbs	Lbs
1/4"	0.18	0.26	3.74	0.35	0.35	1.60	F03/F04	5.3	46	0.8
3/8"	0.25	0.38	3.79	0.35	0.35	1.60	F03/F04	8	46	0.9
1/2"	0.37	0.51	4.02	0.35	0.35	1.60	F03/F04	19	46	0.9
3/4"	0.63	0.75	4.02	0.35	0.35	1.60	F03/F04	35	58	1.2

## SERIES 500N - 500S

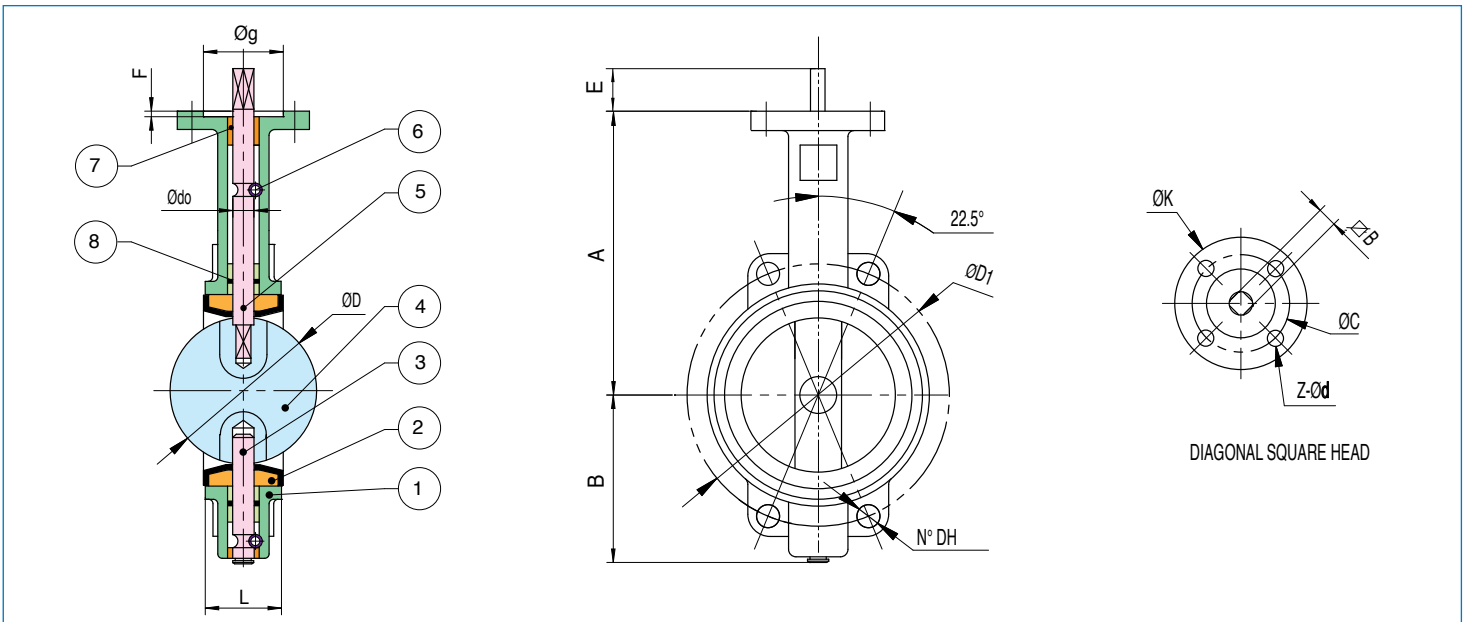
NYLON 11 COATED DISC    CF8M SS DISC

Direct mount cartridge-style ANSI 150 butterfly valves.

- Epoxy coated cast iron wafer body.
- Full port sizes 1"1/2 to 12".
- ISO 5211 direct mounting flange.
- EPDM resilient seat -30°F to +250°F.
- API609 face to face flange.
- Floating dual shaft disc design.
- MSS SP 67 compliant.
- No pins in disc prevent potential leak points.

530N-530S: VITON SEATS

540N-540S: BUNA-N SEATS



N Pcs	PART NAME	MATERIAL	N Pcs	SIZE	QC ISO	∇B	A	B	L	ØD	E	UPPER FLANGE				DISC	WAFER	WT.	SEAT TORQUE				CV (GPM@ 1psi)	
												Ødo	ØK	z-Ød	Øg				F	ØD1	N°-DH	Lbs	100 psi	200 psi
1	BODY	CAST IRON A126 Gr. B	1	1"1/2	F05	9 mm	5.71	2.97	1.61	1.67	0.47	0.50	3.03	4-0.28	1.38	0.12	4.74	4-0.75	5.0	111	133	35	108	
2	SEAT	EPDM (-30 to 250F)	1	2"	F05	9 mm	6.34	3.15	1.65	2.07	0.47	0.50	3.03	4-0.28	1.38	0.12	4.74	4-0.75	5.5	126	146	45	135	
3	LOWER SHAFT	SS 416	1	2"1/2	F05	9 mm	6.89	3.50	1.76	2.54	0.47	0.50	3.03	4-0.28	1.38	0.12	5.49	4-0.75	7.1	134	167	65	220	
4	DISC 500N DISC 500S	NYLON-11 DI CF8M SS	1	3"	F05	9 mm	7.13	3.74	1.78	3.10	0.47	0.50	3.03	4-0.28	1.38	0.12	6.00	4-0.75	8.4	205	223	70	300	
5	UPPER SHAFT	SS 416	1	4"	F07	11 mm	7.87	4.49	2.05	4.09	0.63	0.62	3.54	4-0.35	2.17	0.12	7.50	4-0.75	10.8	339	386	140	605	
6	LOCATING PIN	CARBON STEEL	1	5"	F07	14 mm	8.34	5.00	2.14	4.85	0.75	0.75	3.54	4-0.35	2.17	0.12	8.50	4-0.87	15.4	523	602	235	1010	
7	BUSHING	P.T.F.E.	1	6"	F07	14 mm	8.90	5.47	2.20	6.13	0.75	0.75	3.54	4-0.35	2.17	0.12	9.50	4-0.87	17.2	677	996	360	1620	
8	O-RING	EPDM	1	8"	F10	17 mm	10.24	6.89	2.34	7.97	0.75	0.87	4.92	4-0.47	2.76	0.14	11.75	4-0.87	29.1	1205	1864	715	3205	
				10"	F10	22 mm	11.50	7.99	2.58	9.86	0.94	1.12	4.92	4-0.47	2.76	1.40	14.25	4-1.00	42.2	1890	3140	1225	5305	
				12"	F10	22 mm	13.27	9.53	3.03	11.87	0.94	1.24	5.51	4-0.47	2.76	1.40	17.00	4-1.00	71.5	2808	4767	1900	8250	



## SERIES 501N - 501S

**NYLON 11 COATED DISC CF8M SS DISC**

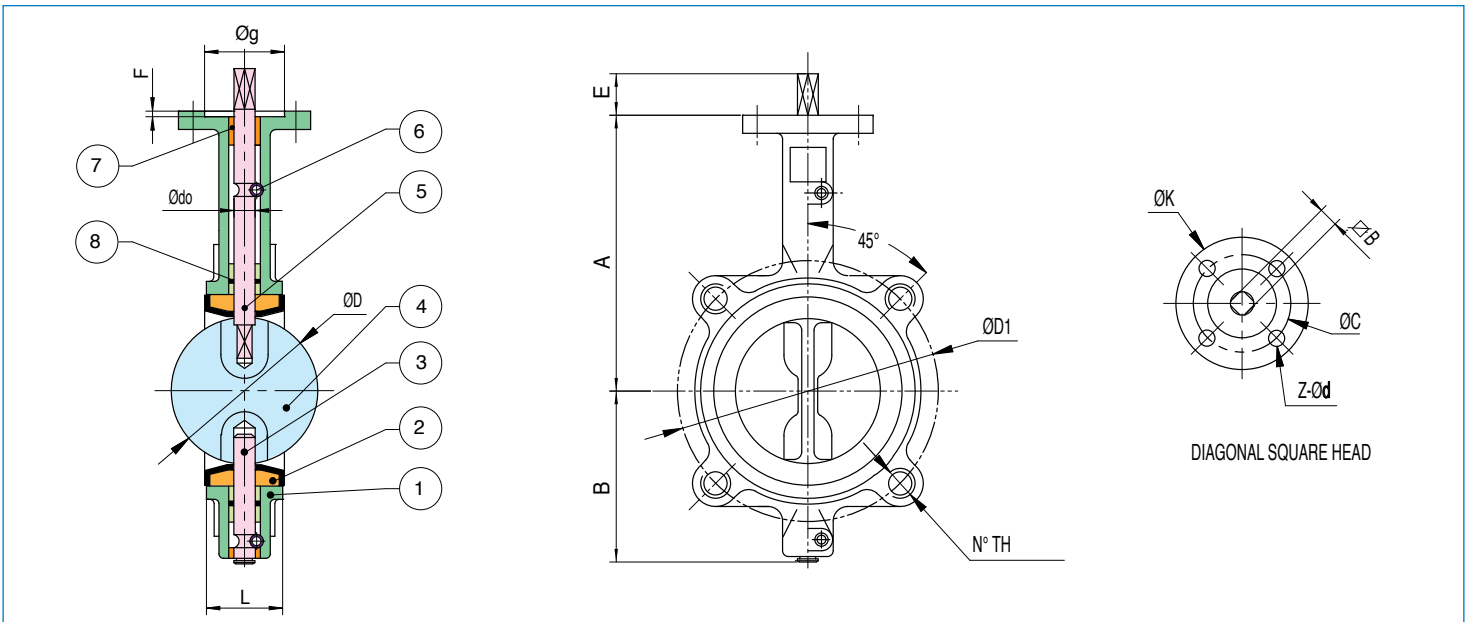


Direct mount cartidge-style ANSI 150 butterfly valves.

- Epoxy coated ductile iron lug body.
- Full port sizes 1 1/2 to 12".
- ISO 5211 direct mounting flange.
- EPDM resilient seat -30°F to +250°F.
- API609 face to face flange.
- Floating dual shaft disc design.
- MSS SP 67 compliant.
- No pins in disc prevent potential leak points.

531N-531S: VITON SEATS

541N-541S: BUNA-N SEATS



PART NAME	MATERIAL	N PCS
1 BODY	DUCTILE IRON A536 Gr. 65-45-12	1
2 SEAT	EPDM (-30 to 250F)	1
3 LOWER SHAFT	SS 416	1
4 DISC 501N DISC 501S	NYLON-11 DI CF8M SS	1
5 UPPER SHAFT	SS 416	1
6 LOCATING PIN	CARBON STEEL	1
7 BUSHING	P.T.F.E.	1
8 O-RING	EPDM	1

SIZE	ØC ISO	∇B	A	B	L	ØD	E	UPPER FLANGE					DISC ØD1	LUG N°-TH(UNC)	WT. Lbs	SEAT TORQUE				CV (GPM@ 1psi)
								Ødo	ØK	z-Ød	Øg	F				100 psi	200 psi	50% OP	100% OP	
1 1/2"	F05	9 mm	5.71	2.97	1.61	1.67	0.47	0.50	3.03	4-0.28	1.38	0.12	4.74	4-5/8"-11	7.9	111	133	35	108	
2"	F05	9 mm	6.34	3.15	1.65	2.07	0.47	0.50	3.03	4-0.28	1.38	0.12	4.74	4-5/8"-11	8.4	126	146	45	135	
2 1/2"	F05	9 mm	6.89	3.50	1.76	2.54	0.47	0.50	3.03	4-0.28	1.38	0.12	5.49	4-5/8"-11	9.3	134	167	65	220	
3"	F05	9 mm	7.13	3.74	1.78	3.10	0.47	0.50	3.03	4-0.28	1.38	0.12	6.00	4-5/8"-11	10.4	205	223	70	300	
4"	F07	11 mm	7.87	4.49	2.05	4.09	0.63	0.62	3.54	4-0.35	2.17	0.12	7.50	8-5/8"-11	19.8	339	386	140	605	
5"	F07	14 mm	8.34	5.00	2.14	4.85	0.75	0.75	3.54	4-0.35	2.17	0.12	8.50	8-3/4"-10	24	523	602	235	1010	
6"	F07	14 mm	8.90	5.47	2.20	6.13	0.75	0.75	3.54	4-0.35	2.17	0.12	9.50	8-3/4"-10	31.3	677	996	360	1620	
8"	F10	17 mm	10.24	6.89	2.34	7.97	0.75	0.87	4.92	4-0.47	2.76	0.14	11.75	8-3/4"-10	40.1	1205	1864	715	3205	
10"	F10	22 mm	11.50	7.99	2.58	9.86	0.94	1.12	4.92	4-0.47	2.76	1.40	14.25	12-7/8"-9	59.1	1890	3140	1225	5305	
12"	F10	22 mm	13.27	9.53	3.03	11.87	0.94	1.24	5.51	4-0.47	2.76	1.40	17.00	12-7/8"-9	88.2	2808	4767	1900	8250	

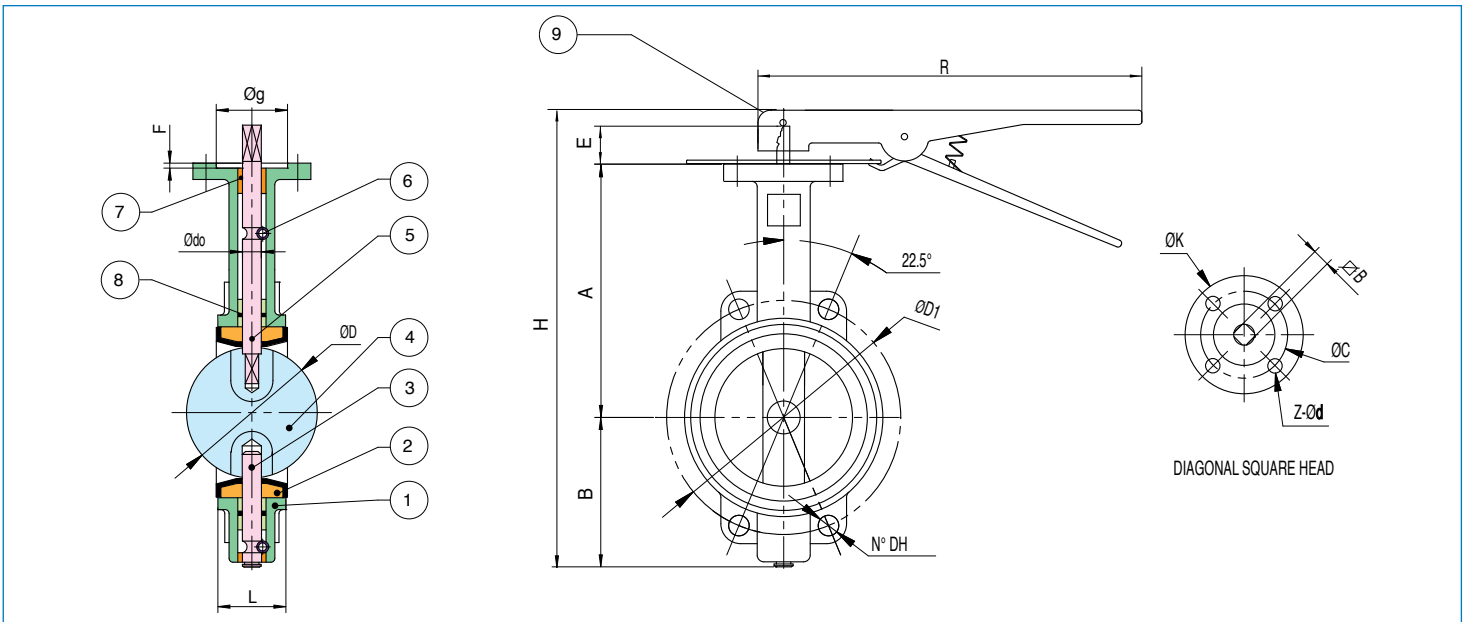


## SERIES L500N - L500S

**NYLON 11 COATED DISC    CF8M SS DISC**

- Manually operated butterfly valves.
- Epoxy coated cast iron wafer body.
  - Full port sizes 1"1/2 to 12".
  - EPDM resilient seat -30°F to 250°F.
  - API609 face to face flange.
  - Floating dual shaft disc design.
  - 10 position stop.
  - MSS SP 67 compliant.
  - No pins in disc prevent potential leak points.

L530N-L530S: VITON SEATS  
L540N-L540S: BUNA-N SEATS



N° Pcs	PART NAME	MATERIAL	N° Pcs	SIZE	ØC ISO	Z-B	A	B	L	ØD	E	H	R	Ødo	UPPER FLANGE				DISC ØD1	WAFER N°-DH	WT. Lbs	SEAT TORQUE		CV (GPM@ 1psi)	
															ØK	Z-d	Øg	F				100 psi	200 psi	50% OP	100% OP
1	BODY	CAST IRON	1	1"1/2	F05	9 mm	5.71	2.97	1.61	1.67	0.47	12.95	10.63	0.50	3.03	4-0.28	1.38	0.12	4.74	4-0.75	5.0	111	133	35	108
2	SEAT	EPDM (30F to 250F)	1	2"	F05	9 mm	6.34	3.15	1.65	2.07	0.47	13.94	10.63	0.50	3.03	4-0.28	1.38	0.12	4.74	4-0.75	5.5	126	146	45	135
3	LOWER SHAFT	SS 416	1	2"1/2	F05	9 mm	6.89	3.50	1.76	2.54	0.47	15.04	10.63	0.50	3.03	4-0.28	1.38	0.12	5.49	4-0.75	7.1	134	167	65	220
4	DISC 500N DISC 500S	IRON NYLON 11 STAINLESS STEEL	1	3"	F05	9 mm	7.13	3.74	1.78	3.10	0.47	15.51	10.63	0.50	3.03	4-0.28	1.38	0.12	6.00	4-0.75	8.4	205	223	70	300
5	UPPER SHAFT	SS 416	1	4"	F07	11 mm	7.87	4.49	2.05	4.09	0.63	17	10.63	0.62	3.54	4-0.35	2.17	0.12	7.50	4-0.75	10.8	339	386	140	605
6	LOCATING PIN	CARBON STEEL	1	5"	F07	14 mm	8.34	5.00	2.14	4.85	0.75	17.94	10.63	0.75	3.54	4-0.35	2.17	0.12	8.50	4-0.87	15.4	523	602	235	1010
7	BUSHING	P.T.F.E.	1	6"	F07	14 mm	8.90	5.47	2.20	6.13	0.75	19.06	10.63	0.75	3.54	4-0.35	2.17	0.12	9.50	4-0.87	17.2	677	996	360	1620
8	O-RING	EPDM	1	8"	F10	17 mm	10.24	6.89	2.34	7.97	0.75	22.25	14.17	0.87	4.92	4-0.47	2.76	0.14	11.75	4-0.87	29.1	1205	1864	715	3205
9	LEVER	EPOXY-COATED CARBON STEEL	1	10"	F10	22 mm	11.50	7.99	2.58	9.86	0.94	24.77	19.68	1.12	4.92	4-0.47	2.76	1.40	14.25	4-1.00	42.2	1890	3140	1225	5305
				12"	F10	22 mm	13.27	9.53	3.03	11.87	0.94	28.31	19.68	1.24	5.51	4-0.47	2.76	1.40	17.00	4-1.00	71.5	2808	4767	1900	8250

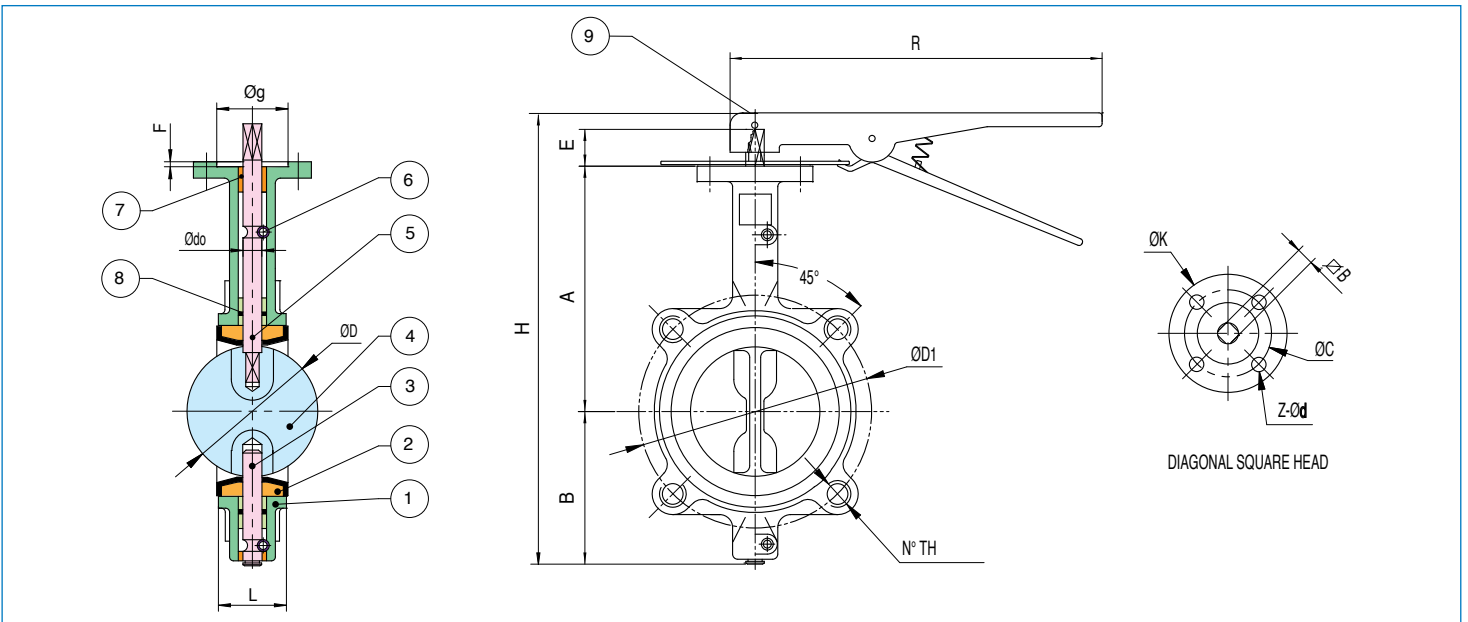
## SERIES L501N - L501S

**NYLON 11 COATED DISC    CF8M SS DISC**



- Manually operated butterfly valves.
- Epoxy coated ductile iron lug body.
  - Full port sizes 1 1/2 to 12"
  - EPDM resilient seat -30°F to 250°F.
  - API609 face to face flange.
  - Floating dual shaft disc design.
  - 10 position stop.
  - MSS SP 67 compliant.
  - No pins in disc prevent potential leak points.

L531N-L531S: VITON SEATS  
L541N-L541S: BUNA-N SEATS



PART NAME	MATERIAL	N PCS	SIZE	ØC ISO	Z-B	A	B	L	ØD	E	H	R	Ødo	UPPER FLANGE				DISC	LUG	WT.	SEAT TORQUE				CV (GPM@ 1psi)	
														ØK	Z-d	Øg	F				ØD1	N°-TH	Lbs	100 psi	200 psi	50% OP
1 BODY	DUCTILE IRON	1	1 1/2"	F05	9 mm	5.71	2.97	1.61	1.67	0.47	12.95	10.63	0.50	3.03	4-0.28	1.38	0.12	4.74	4-5/8"-11	7.9	111	133	35	108		
2 SEAT	EPDM (30F to 250F)	1	2"	F05	9 mm	6.34	3.15	1.65	2.07	0.47	13.94	10.63	0.50	3.03	4-0.28	1.38	0.12	4.74	4-5/8"-11	8.4	126	146	45	135		
3 LOWER SHAFT	SS 416	1	2 1/2"	F05	9 mm	6.89	3.50	1.76	2.54	0.47	15.04	10.63	0.50	3.03	4-0.28	1.38	0.12	5.49	4-5/8"-11	9.3	134	167	65	220		
4 DISC 500N	IRON NYLON 11	1	3"	F05	9 mm	7.13	3.74	1.78	3.10	0.47	15.51	10.63	0.50	3.03	4-0.28	1.38	0.12	6.00	4-5/8"-11	10.4	205	223	70	300		
4 DISC 500S	STAINLESS STEEL		4"	F07	11 mm	7.87	4.49	2.05	4.09	0.63	17	10.63	0.62	3.54	4-0.35	2.17	0.12	7.50	8-5/8"-11	19.8	339	386	140	605		
5 UPPER SHAFT	SS 416	1	5"	F07	14 mm	8.34	5.00	2.14	4.85	0.75	17.94	10.63	0.75	3.54	4-0.35	2.17	0.12	8.50	8-3/4"-10	24	523	602	235	1010		
6 LOCATING PIN	CARBON STEEL	1	6"	F07	14 mm	8.90	5.47	2.20	6.13	0.75	19.06	10.63	0.75	3.54	4-0.35	2.17	0.12	9.50	8-3/4"-10	31.3	677	996	360	1620		
7 BUSHING	P.T.F.E.	1	8"	F10	17 mm	10.24	6.89	2.34	7.97	0.75	22.25	14.17	0.87	4.92	4-0.47	2.76	0.14	11.75	8-3/4"-10	40.1	1205	1864	715	3205		
8 O-RING	EPDM	1	10"	F10	22 mm	11.50	7.99	2.58	9.86	0.94	24.77	19.68	1.12	4.92	4-0.47	2.76	1.40	14.25	12-7/8"-9	59.1	1890	3140	1225	5305		
9 LEVER	EPOXY-COATED CARBON STEEL	1	12"	F10	22 mm	13.27	9.53	3.03	11.87	0.94	28.31	19.68	1.24	5.51	4-0.47	2.76	1.40	17.00	12-7/8"-9	88.2	2808	4767	1900	8250		

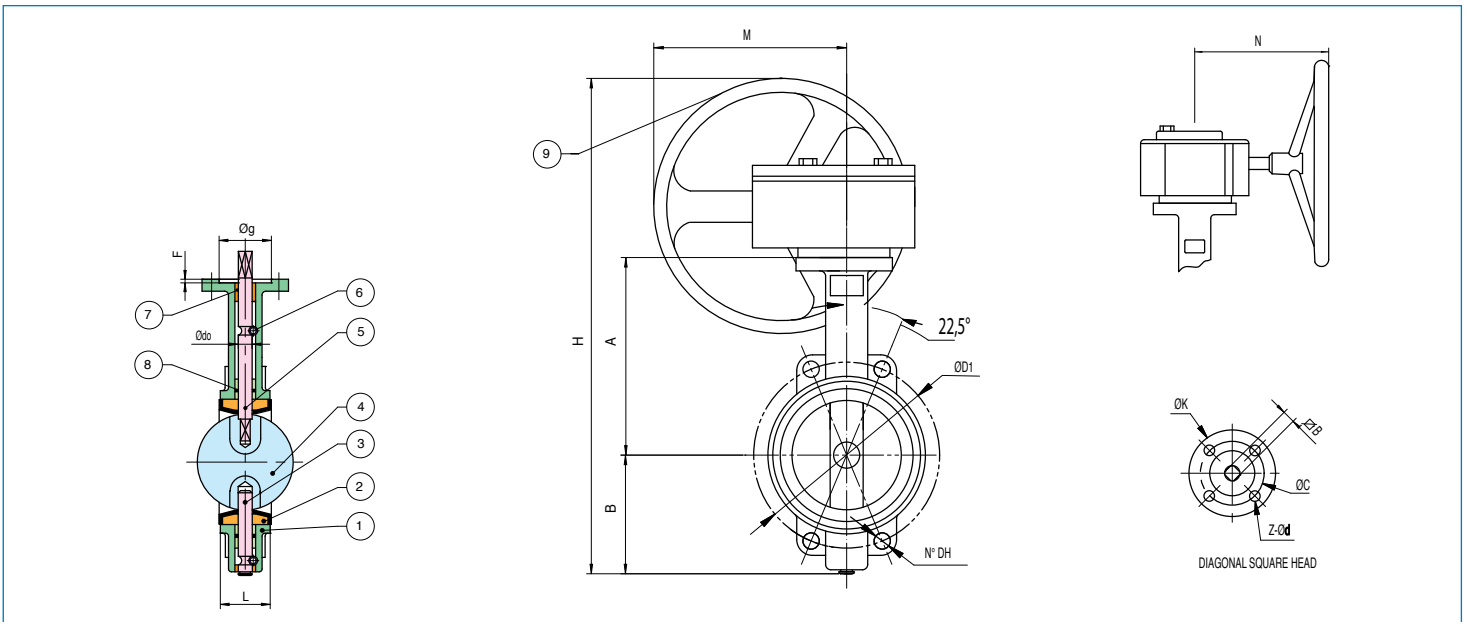


## SERIES G500N - G500S

**NYLON 11 COATED DISC    CF8M SS DISC**

- Gear operated butterfly valves.
- Epoxy coated cast iron wafer body.
  - Full port sizes 1"1/2 to 12".
  - Direct mount ISO 5211
  - EPDM resilient seat -30°F to 250° F.
  - Low turn ratio.
  - API609 face to face flange.
  - Floating dual shaft disc design.
  - IP54 enclosure.
  - MSS SP 67 compliant.
  - No pins in disc prevent potential leak points.

G530N-G530S: VITON SEATS  
G540N-G540S: BUNA-N SEATS



N Pcs	PART NAME	MATERIAL	N PCS	SIZE	ØC ISO	B	A	B	L	H	M	N	Ødo	UPPER FLANGE				DISC	WAFER	WT.	SEAT TORQUE				CV (GPM@ 1psi)	
														ØK	Z-Ød	Øg	F				ØD1	N°-DH	Lbs	100 psi	200 psi	50% OP
1	BODY	CAST IRON	1	1"1/2	F05	9 mm	7.24	2.97	1.61	13.12	4.75	6.00	0.50	3.03	4-0.28	1.38	0.12	4.74	4-0.75	16.3	111	133	35	108		
2	SEAT	EPDM (30F to 250F)	1	2"	F05	9 mm	7.60	3.15	1.65	13.93	4.75	6.00	0.50	3.03	4-0.28	1.38	0.12	4.74	4-0.75	17	126	146	45	135		
3	LOWER SHAFT	SS 416	1	2"1/2	F05	9 mm	8.15	3.50	1.76	14.83	4.75	6.00	0.50	3.03	4-0.28	1.38	0.12	5.49	4-0.75	18.6	134	167	65	220		
4	DISC G500N	IRON NYLON 11	1	3"	F05	9 mm	8.38	3.74	1.78	15.31	4.75	6.00	0.50	3.03	4-0.28	1.38	0.12	6.00	4-0.75	19.9	205	223	70	300		
	DISC G500S	STAINLESS STEEL		4"	F07	11 mm	9.13	4.49	2.05	16.8	4.75	6.00	0.62	3.54	4-0.35	2.17	0.12	7.50	4-0.75	22.3	339	386	140	605		
5	UPPER SHAFT	SS 416	1	5"	F07	14 mm	9.60	5.00	2.14	17.78	4.75	6.00	0.75	3.54	4-0.35	2.17	0.12	8.50	4-0.87	26.9	523	602	235	1010		
6	LOCATING PIN	CARBON STEEL	1	6"	F07	14 mm	10.16	5.47	2.20	18.81	4.75	6.00	0.75	3.54	4-0.35	2.17	0.12	9.50	4-0.87	28.7	677	996	360	1620		
7	BUSHING	P.T.F.E.	1	8"	F10	17 mm	12.01	6.89	2.34	24.73	8.35	9.84	0.87	4.92	4-0.47	2.76	0.14	11.75	4-0.87	57.8	1205	1864	715	3205		
8	O-RING	EPDM	1	10"	F10	22 mm	13.27	7.99	2.58	27.03	8.35	9.84	1.12	4.92	4-0.47	2.76	1.40	14.25	4-1.00	70.9	1890	3140	1225	5305		
9	GEAR	CAST IRON	1	12"	F10	22 mm	15.04	9.53	3.03	30.34	9.06	8.94	1.24	5.51	4-0.47	2.76	1.40	17.00	4-1.00	104.6	2808	4767	1900	8250		

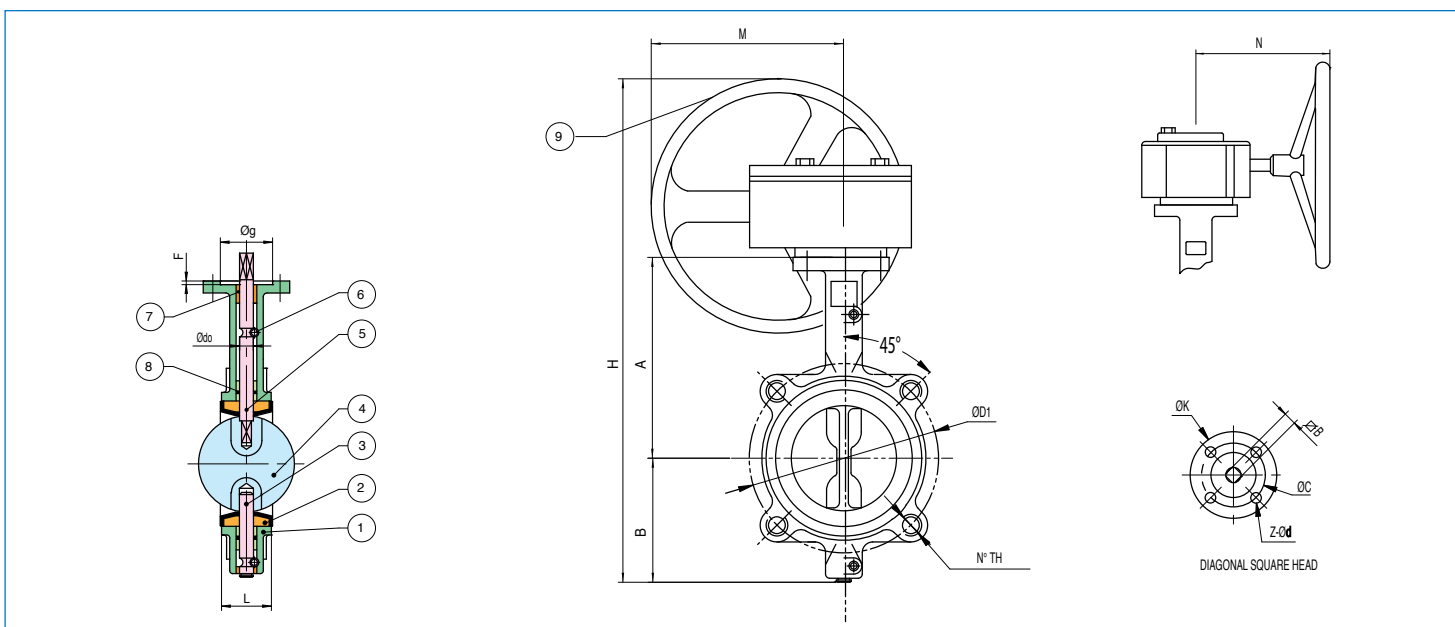


## SERIES G501N - G501S

**NYLON 11 COATED DISC      CF8M SS DISC**

- Gear operated butterfly valves.
- Epoxy coated ductile iron lug body.
  - Full port sizes 1 1/2 to 12".
  - Direct mount ISO 5211
  - EPDM resilient seat -30°F to 250°F.
  - Low turn ratio.
  - API609 face to face flange.
  - Floating dual shaft disc design.
  - IP54 enclosure.
  - MSS SP 67 compliant.
  - No pins in disc prevent potential leak points.

G531N-G531S: VITON SEATS  
G541N-G541S: BUNA-N SEATS



N Pcs	PART NAME	MATERIAL	N Pcs
1	BODY	DUCTILE IRON	1
2	SEAT	EPDM (30F to 250F)	1
3	LOWER SHAFT	SS 416	1
4	DISC G501N DISC G501S	IRON NYLON 11 STAINLESS STEEL	1
5	UPPER SHAFT	SS 416	1
6	LOCATING PIN	CARBON STEEL	1
7	BUSHING	P.T.F.E.	1
8	O-RING	EPDM	1
9	GEAR	CAST IRON	1

SIZE	ØC ISO	B	A	B	L	H	M	N	Ødo	UPPER FLANGE				DISC ØD1	LUG N° TH	WT. Lbs	SEAT TORQUE		CV (GPM@ 1psi)	
										ØK	Z-Ød	Øg	F				100 psi	200 psi	50% OP	100% OP
1 1/2"	F05	9 mm	7.24	2.97	1.61	13.12	4.75	6.00	0.50	3.03	4-0.28	1.38	0.12	4.74	4-5/8"-11	19.1	111	133	35	108
2"	F05	9 mm	7.60	3.15	1.65	13.93	4.75	6.00	0.50	3.03	4-0.28	1.38	0.12	4.74	4-5/8"-11	19.9	126	146	45	135
2 1/2"	F05	9 mm	8.15	3.50	1.76	14.83	4.75	6.00	0.50	3.03	4-0.28	1.38	0.12	5.49	4-5/8"-11	20.8	134	167	65	220
3"	F05	9 mm	8.38	3.74	1.78	15.31	4.75	6.00	0.50	3.03	4-0.28	1.38	0.12	6.00	4-5/8"-11	21.9	205	223	70	300
4"	F07	11 mm	9.13	4.49	2.05	16.8	4.75	6.00	0.62	3.54	4-0.35	2.17	0.12	7.50	8-5/8"-11	31.3	339	386	140	605
5"	F07	14 mm	9.60	5.00	2.14	17.78	4.75	6.00	0.75	3.54	4-0.35	2.17	0.12	8.50	8-3/4"-10	35.5	523	602	235	1010
6"	F07	14 mm	10.16	5.47	2.20	18.81	4.75	6.00	0.75	3.54	4-0.35	2.17	0.12	9.50	8-3/4"-10	42.8	677	996	360	1620
8"	F10	17 mm	12.01	6.89	2.34	24.73	8.35	9.84	0.87	4.92	4-0.47	2.76	0.14	11.75	8-3/4"-10	68.6	1205	1864	715	3205
10"	F10	22 mm	13.27	7.99	2.58	27.03	8.35	9.84	1.12	4.92	4-0.47	2.76	1.40	14.25	12-7/8"-9	87.3	1890	3140	1225	5305
12"	F10	22 mm	15.04	9.53	3.03	30.34	9.06	8.94	1.24	5.51	4-0.47	2.76	1.40	17.00	12-7/8"-9	121.3	2808	4767	1900	8250



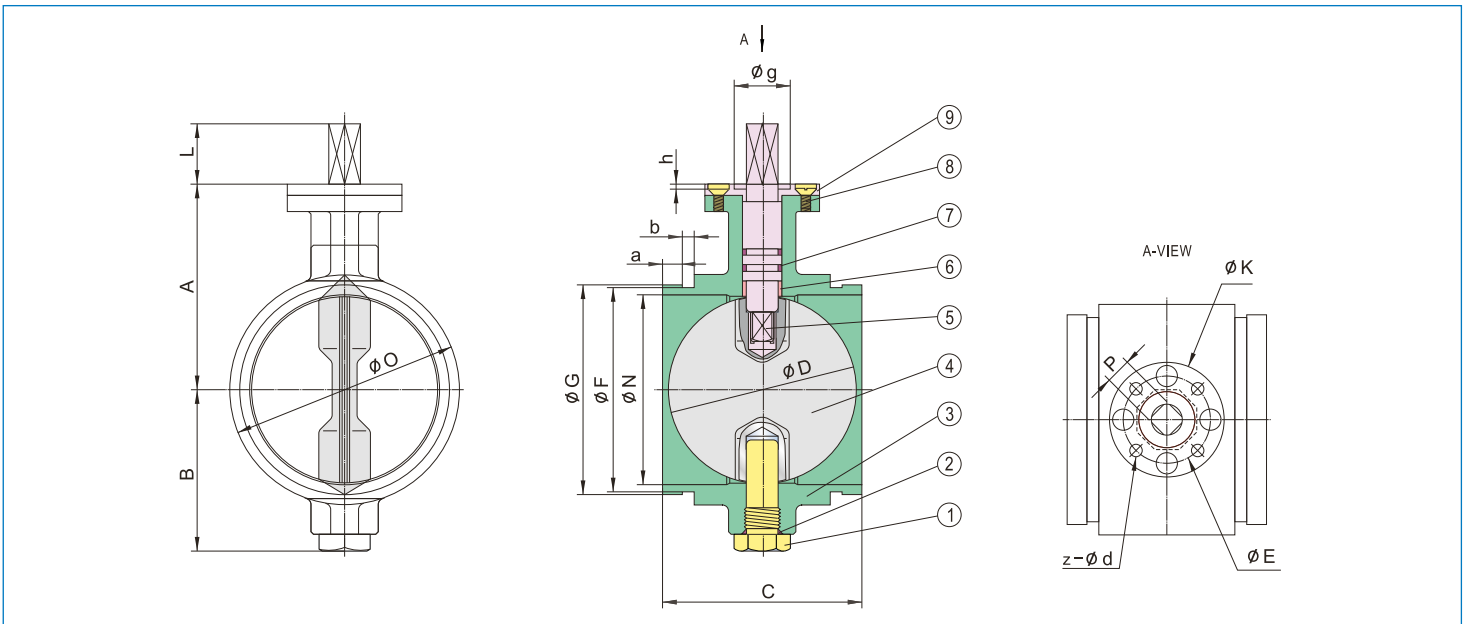
## SERIES L700

### GROOVED END BUTTERFLY VALVE

2 ways, ISO5211 direct mount butterfly valve.

- Working pressure 200 psi.
- Standard disc EPD.M coated, NBR available.
- Face to face MSS-SP-67.
- End ANSI-AWWA C606.

**NEW**



N Pcs	PART NAME	MATERIAL	N PCS	SIZE	ØA	B	C	D	L	P	K	E	z-d	g	h	O	G	F	N	Cv	Break torque	Wt/Lbs
1	LOWER SHATF	410 STAINLESS STEEL	1	2"	4.68	2.48	3.18	2.01	1.25	9	3.54	2.75	4 x 9	2.16	0.12	2.79	2.37	2.25	1.96	135	in/Lbs	3.9
2	O-RING	NBR, EPDM	1	2"1/2	4.94	2.69	3.81	2.48	1.25	9	3.54	2.75	4 x 9	2.16	0.12	3.03	2.87	2.72	2.40	220	in/Lbs	4.8
3	BODY	CAST IRON DUCTILE IRON	1	3"	5.17	3.15	3.81	2.99	1.25	9	3.54	2.75	4 x 9	2.16	0.12	3.97	3.50	3.34	3.14	302	in/Lbs	5.9
4	DISC	DUCTILE IRON + NBR/EPDM	1	4"	5.94	3.70	4.55	3.91	1.25	11	3.54	2.75	4 x 9	2.16	0.12	4.96	4.50	4.33	3.97	600	in/Lbs	9.9
5	UPPER SHAFT	410 STAINLESS STEEL	1	5"	6.75	4.25	5.81	4.96	1.25	14	3.54	2.75	4 x 9	2.16	0.12	5.74	4.50	5.39	5.00	1022	in/Lbs	16.7
6	BUSHING	P.T.F.E.	1	6"	7.20	4.84	5.81	5.91	1.61	14	3.54	2.75	4 x 9	2.16	0.12	7.08	6.62	6.45	5.90	1579	in/Lbs	21.1
7	O-RING	NBR, EPDM	1	8"	8.08	5.88	5.25	7.89	1.25	17	4.92	4.01	4 x 12	2.75	0.14	9.37	8.62	8.44	7.95	3136	in/Lbs	32.4
8	SCREW	CARBON STEEL ZINC PLATED	1	10"	9.84	7.32	6.25	9.87	1.61	22	4.92	4.01	4 x 12	2.75	0.14	11.4	10.07	10.05	9.96	5340	in/Lbs	54.4
9	COVER	CARBON STEEL NICKEL PLATED	1	12"	10.8	8.38	6.50	11.8	1.61	22	4.92	4.01	4 x 12	2.75	0.14	13.4	12.07	12.05	11.9	8250	in/Lbs	76.0

## SERIES DA500S SR500S

### Art. DA500S

VALVE WITH DOUBLE ACTING ACTUATOR

ACT.	DA52	DA52	DA52	DA63	DA75	DA85	DA85	DA100	DA140	DA160
SIZE	1 1/2"	2"	2 1/2"	3"	4"	5"	6"	8"	10"	12"
A	9.71	10.34	10.89	11.58	13.03	14.05	15.12	17.63	20.44	23.15
B	12.68	13.49	14.39	15.32	17.52	19.05	20.59	24.52	28.43	32.68
C	4.74	4.74	5.49	6.00	7.50	8.50	9.50	11.75	14.25	17.00
D	2.8	2.8	2.8	3.17	3.72	4.17	4.17	4.84	6.46	7.32
E	1.61	1.65	1.7	1.78	2.05	2.14	2.19	2.38	2.58	3.03
F	5.55	5.55	5.55	6.46	8.27	9.47	9.47	10.83	17.13	19.69
N°	4	4	4	4	4	4	4	4	4	4
ØD2	0.75	0.75	0.75	0.75	0.75	0.87	0.87	0.87	1.00	1.00
ØD1	1.67	2.07	2.54	3.10	4.09	4.85	6.13	7.97	9.86	11.87
Wt/Lbs	7.2	7.9	9.5	12.1	17	24	29.5	48	78	119.5

### Art. SR500S

VALVE WITH SPRING RETURN ACTUATOR

ACT.	SR75	SR75	SR75	SR85	SR100	SR115	SR125	SR160	SR200	*
SIZE	1 1/2"	2"	2 1/2"	3"	4"	5"	6"	8"	10"	12"
A	10.87	11.5	12.05	12.84	14.08	15.91	17.84	20.12	23.63	-
B	13.84	14.65	15.55	16.58	18.57	20.91	23.31	27.01	31.62	-
C	4.74	4.74	5.49	6.00	7.50	8.50	9.50	11.75	14.25	-
D	3.72	3.72	3.72	4.17	4.84	5.39	5.83	7.32	8.54	-
E	1.61	1.65	1.76	1.78	2.05	2.14	2.19	2.38	2.58	-
F	8.27	8.27	8.27	9.47	10.83	13.11	14.65	19.69	22.76	-
N°	4	4	4	4	4	4	4	4	4	-
ØD2	0.75	0.75	0.75	0.75	0.75	0.87	0.87	0.87	1.00	-
ØD1	1.67	2.07	2.54	3.10	4.09	4.85	6.13	7.97	9.86	-
Wt/Lbs	12.3	13	14.5	19	26.3	41	64	99	163.5	-

\* Consult factory

## SERIES DA500N SR500N

### Art. DA500N

VALVE WITH DOUBLE ACTING ACTUATOR

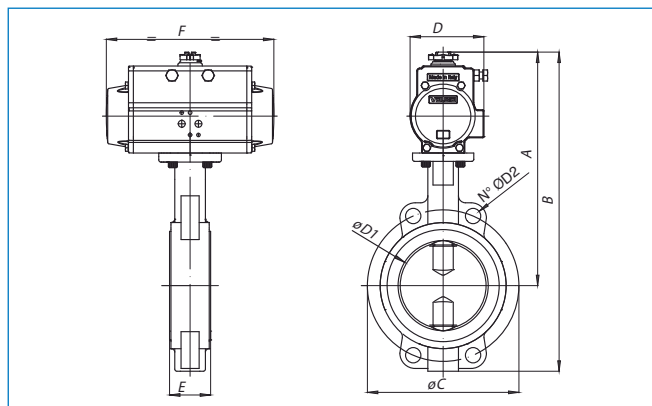
ACT.	DA52	DA52	DA63	DA75	DA85	DA85	DA100	DA140	DA160
SIZE	2"	2 1/2"	3"	4"	5"	6"	8"	10"	12"
A	10.34	10.89	11.58	13.03	14.05	15.12	17.63	20.44	23.15
B	13.49	14.39	15.32	17.52	19.05	20.59	24.52	28.43	32.68
C	4.74	5.49	6.00	7.50	8.50	9.50	11.75	14.25	17.00
D	2.8	2.8	3.17	3.72	4.17	4.17	4.84	6.46	7.32
E	1.65	1.7	1.78	2.05	2.14	2.19	2.38	2.58	3.03
F	5.55	5.55	6.46	8.27	9.47	9.47	10.83	17.13	19.69
N°	4	4	4	4	4	4	4	4	4
ØD2	0.75	0.75	0.75	0.75	0.87	0.87	0.87	1.00	1.00
ØD1	2.07	2.54	3.10	4.09	4.85	6.13	7.97	9.86	11.87
Wt/Lbs	7.9	9.5	12.1	17	24	29.5	48	78	119.5

### Art. SR500N

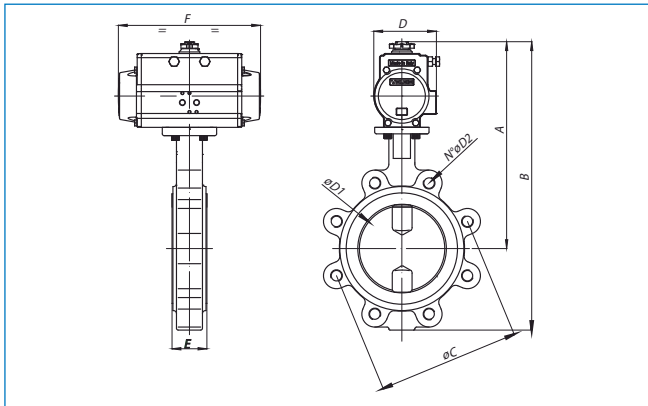
VALVE WITH SPRING RETURN ACTUATOR

ACT.	SR75	SR75	SR85	SR100	SR115	SR125	SR160	SR200	*
SIZE	2"	2 1/2"	3"	4"	5"	6"	8"	10"	12"
A	11.5	12.05	12.84	14.08	15.91	17.84	20.12	23.63	-
B	14.65	15.55	16.58	18.57	20.91	23.31	27.01	31.62	-
C	4.74	5.49	6.00	7.50	8.50	9.50	11.75	14.25	17.00
D	3.72	3.72	4.17	4.84	5.39	5.83	7.32	8.54	-
E	1.65	1.76	1.78	2.05	2.14	2.19	2.38	2.58	-
F	8.27	8.27	9.47	10.83	13.11	14.65	19.69	22.76	-
N°	4	4	4	4	4	4	4	4	4
ØD2	0.75	0.75	0.75	0.75	0.87	0.87	0.87	1.00	1.00
ØD1	2.07	2.54	3.10	4.09	4.85	6.13	7.97	9.86	11.87
Wt/Lbs	13	14.5	19	26.3	41	64	99	163.5	-

\* Consult factory.



## SERIES DA501S SR501S



Art. DA501S

VALVE WITH DOUBLE ACTING ACTUATOR

ACT.	DA52	DA52	DA63	DA75	DA85	DA85	DA100	DA140	DA160
SIZE	2"	2 1/2"	3"	4"	5"	6"	8"	10"	12"
A	10.34	10.89	11.58	13.03	14.05	15.12	17.63	20.44	23.15
B	13.49	14.39	15.32	17.52	19.05	20.59	24.52	28.43	32.68
C	4.74	5.49	6.00	7.50	8.50	9.50	11.75	14.25	17.00
D	2.8	2.8	3.17	3.72	4.17	4.17	4.84	6.46	7.32
E	1.65	1.7	1.78	2.05	2.14	2.19	2.38	2.58	3.03
F	5.55	5.55	6.46	8.27	9.47	9.47	10.83	17.13	19.69
N°	4	4	4	8	8	8	8	12	12
ØD2	5/8-11	5/8-11	5/8-11	5/8-11	3/4-10	3/4-10	3/4-10	7/8-9	7/8-9
ØD1	2.07	2.54	3.10	4.09	4.85	6.13	7.97	9.86	11.87
WtLbs	10.8	11.7	14.1	25.9	32.6	43.5	59	95	136

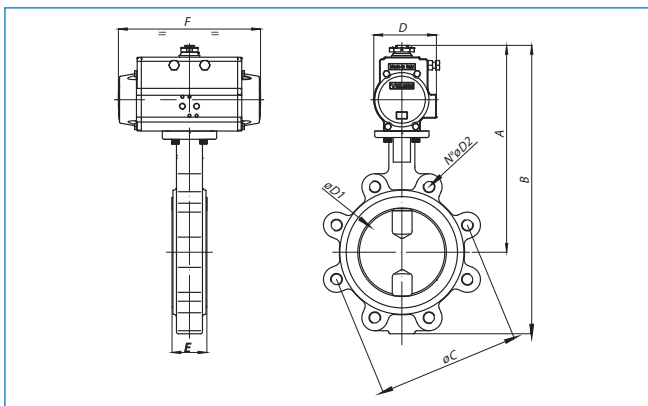
Art. SR501S

VALVE WITH SPRING RETURN ACTUATOR

ACT.	SR75	SR75	SR85	SR100	SR115	SR125	SR160	SR200	*
SIZE	2"	2 1/2"	3"	4"	5"	6"	8"	10"	12"
A	11.5	12.05	12.84	14.08	15.91	17.84	20.12	23.63	
B	14.65	15.55	16.58	18.57	20.91	23.31	27.01	31.62	
C	4.74	5.49	6.00	7.50	8.50	9.50	11.75	14.25	17.00
D	3.72	3.72	4.17	4.84	5.39	5.83	7.32	8.54	
E	1.65	1.76	1.78	2.05	2.14	2.19	2.38	2.58	-
F	8.27	8.27	9.47	10.83	13.11	14.65	19.69	22.76	-
N°	4	4	4	8	8	8	8	12	12
ØD2	5/8-11	5/8-11	5/8-11	5/8-11	3/4-10	3/4-10	3/4-10	7/8-9	7/8-9
ØD1	2.07	2.54	3.10	4.09	4.85	6.13	7.97	9.86	11.87
WtLbs	15.9	16.8	18.5	35.3	49.5	78	110	181	

\* Consult factory

## SERIES DA501N SR501N



Art. DA501S

VALVE WITH DOUBLE ACTING ACTUATOR

ACT.	DA52	DA52	DA52	DA63	DA75	DA85	DA85	DA100	DA140	DA160
SIZE	1 1/2"	2"	2 1/2"	3"	4"	5"	6"	8"	10"	12"
A	9.71	10.34	10.89	11.58	13.03	14.05	15.12	17.63	20.44	23.15
B	12.68	13.49	14.39	15.32	17.52	19.05	20.59	24.52	28.43	32.68
C	4.74	4.74	5.49	6.00	7.50	8.50	9.50	11.75	14.25	17.00
D	2.8	2.8	2.8	3.17	3.72	4.17	4.17	4.84	6.46	7.32
E	1.61	1.65	1.7	1.78	2.05	2.14	2.19	2.38	2.58	3.03
F	5.55	5.55	5.55	6.46	8.27	9.47	9.47	10.83	17.13	19.69
N°	4	4	4	4	8	8	8	8	12	12
ØD2	5/8-11	5/8-11	5/8-11	5/8-11	5/8-11	3/4-10	3/4-10	3/4-10	7/8-9	7/8-9
ØD1	1.67	2.07	2.54	3.10	4.09	4.85	6.13	7.97	9.86	11.87
WtLbs	9.5	10.8	11.7	14.1	25.9	32.6	43.5	59	95	136

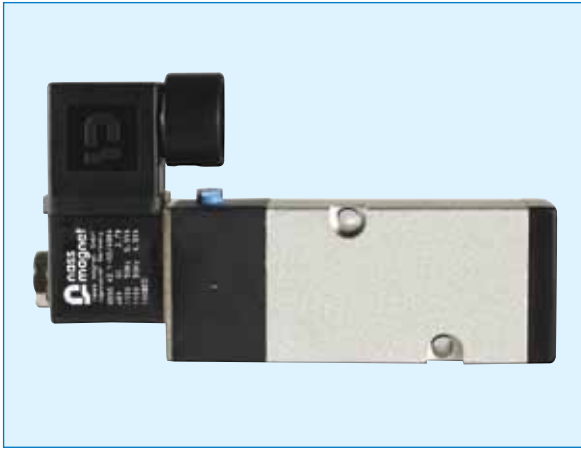
Art. SR501S

VALVE WITH SPRING RETURN ACTUATOR

ACT.	SR75	SR75	SR75	SR85	SR100	SR115	SR125	SR160	SR200	*
SIZE	1 1/2"	2"	2 1/2"	3"	4"	5"	6"	8"	10"	12"
A	10.87	11.5	12.05	12.84	14.08	15.91	17.84	20.12	23.63	
B	13.84	14.65	15.55	16.58	18.57	20.91	23.31	27.01	31.62	
C	4.74	4.74	5.49	6.00	7.50	8.50	9.50	11.75	14.25	17.00
D	3.72	3.72	3.72	4.17	4.84	5.39	5.83	7.32	8.54	-
E	1.61	1.65	1.76	1.78	2.05	2.14	2.19	2.38	2.58	-
F	8.27	8.27	8.27	9.47	10.83	13.11	14.65	19.69	22.76	-
N°	4	4	4	4	8	8	8	8	12	12
ØD2	5/8-11	5/8-11	5/8-11	5/8-11	5/8-11	3/4-10	3/4-10	3/4-10	7/8-9	7/8-9
ØD1	1.67	2.07	2.54	3.10	4.09	4.85	6.13	7.97	9.86	11.87
WtLbs	14.6	15.9	16.8	18.5	35.3	49.5	78	110	181	*

\* Consult factory.





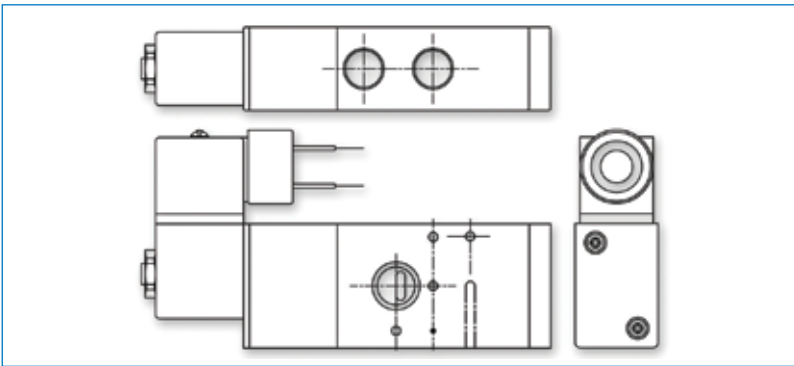
## SERIES NMR3 3-WAY CONDUIT

3-way single solenoid namur.

- Cv=1.68.
- Ports 1/2" NPT.
- Duty cycle 100% continuous.
- Power consumption 2.5 watts.
- Pressure range 20 to 120 PSIG.
- Temperature range 35°F - 130°F (normal) 0°F - 130°F (with dry media).

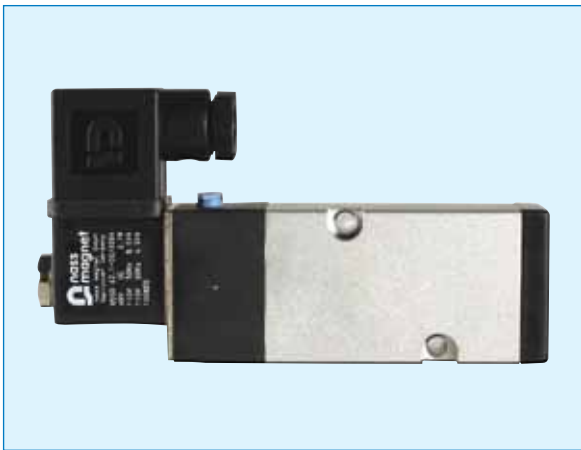


NEMA 4 - 4X



MODEL	VOLTAGE	INRUSH
NMR3-D1	110 VAC	62 mA
NMR3-D2	24 VDC	105 mA
NMR3-D12	12 VDC	204 mA
NMR3-D22	220 VAC	31 mA
NMR3-D24	24 VAC	See*

\* Consult factory.



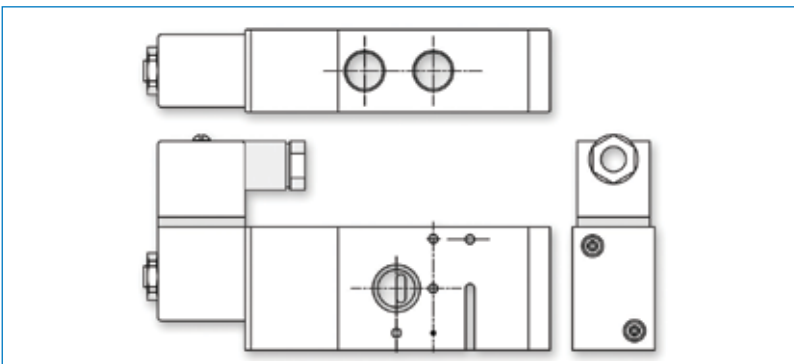
## SERIES NMR3 3-WAY DIN

3-way single solenoid namur.

- Cv=1.68.
- Ports 1/4" NPT.
- Duty cycle 100% continuous.
- Power consumption 2.5 watts.
- Pressure range 20 to 120 PSIG.
- Temperature range 35°F - 130°F (normal) 0°F - 130°F (with dry media).



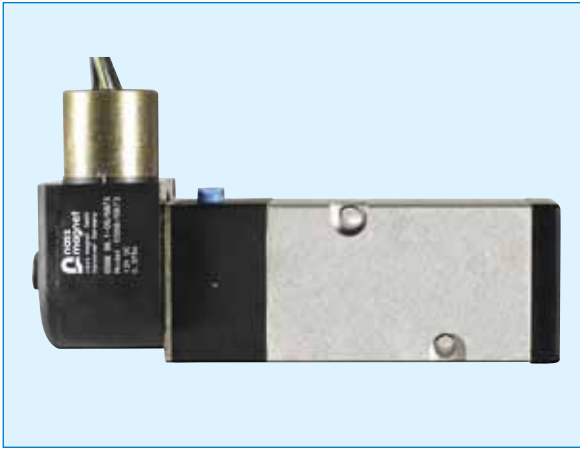
NEMA 4 - 4X



MODEL	VOLTAGE	INRUSH
NMR3-D1	110 VAC	62 mA
NMR3-D2	24 VDC	105 mA
NMR3-D12	12 VDC	204 mA
NMR3-D22	220 VAC	31 mA
NMR3-D24	24 VAC	See*

\* Consult factory.





## SERIES NMR3 3-WAY EXPLOSION PROOF

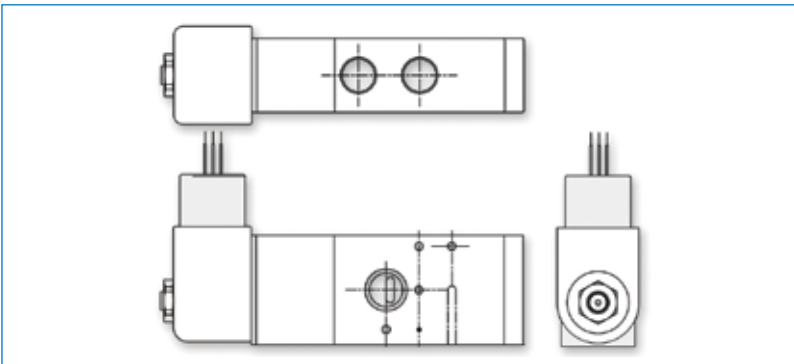
3-way single solenoid namur.

- Cv=1.68.
- Ports 1/4" NPT.
- Duty cycle 100% continuous.
- Power consumption 2.5 watts.
- Pressure range 20 to 120 PSIG.
- Temperature range 35°F - 130°F (normal) 0°F - 130°F (with dry media).

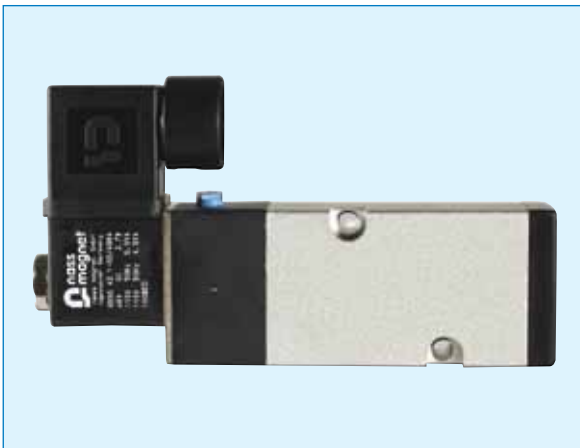


Approved for Hazardous Locations

NEMA 4 - 4X, 7, 9  
CL.I; Zone1, Ex mII T4; AEx mII  
CL.I.; Div.1; GR. A,B,C,D  
CL.II; GR. E,F,G - CL.III  
T4 Ta= -20° c...+60°c  
100% Duty cycle



MODEL	VOLTAGE	INRUSH
NMR3-EX1	110 VAC	74 mA
NMR3-EX2	24 VDC	190 mA
NMR3-EX12	12 VDC	372 mA
NMR3-EX22	24 VAC	36 mA



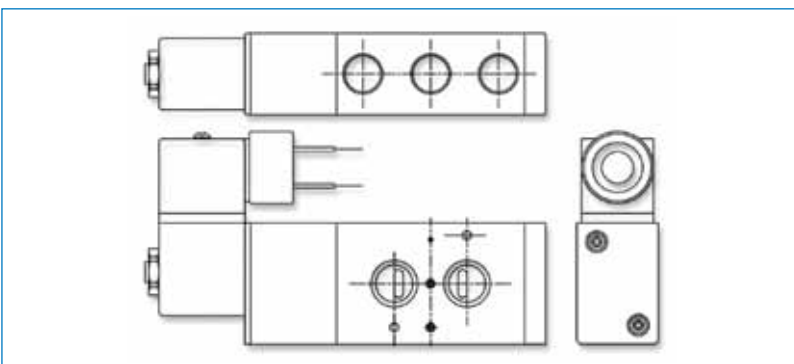
## SERIES NMR1 4-WAY CONDUIT

4-way single solenoid namur.

- Cv=1.68.
- Ports 1/4" NPT.
- Duty cycle 100% continuous.
- Power consumption 2.5 watts.
- Pressure range 20 to 120 PSIG.
- Temperature range 35°F - 130°F (normal) 0°F - 130°F (with dry media).

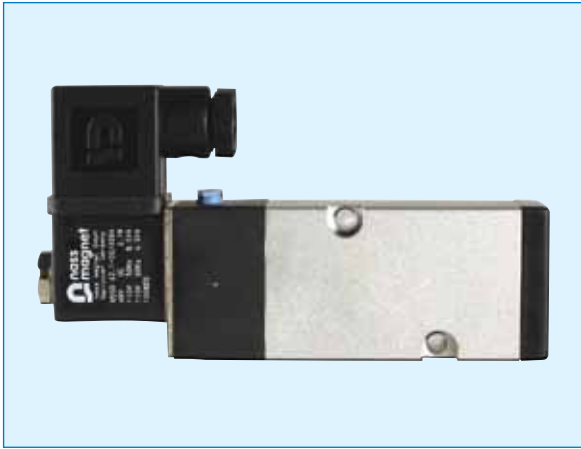


NEMA 4 - 4X



MODEL	VOLTAGE	INRUSH
NMR1-C1	110 VAC	62 mA
NMR1-C2	24 VDC	108 mA
NMR1-C12	12 VDC	204 mA
NMR1-C22	220 VAC	31 mA
NMR1-C24	24 VAC	See*

\* Consult factory.



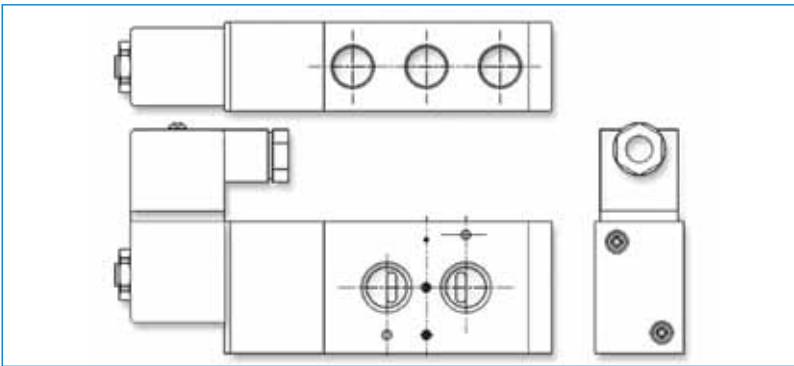
## SERIES NMR1 4-WAY DIN

4-way single solenoid namur.

- Cv=1.68.
- Ports 1/4" NPT.
- Duty cycle 100% continuous.
- Power consumption 2.5 watts.
- Pressure range 20 to 120 PSIG.
- Temperature range 35°F - 130°F (normal) 0°F - 130°F (with dry media).

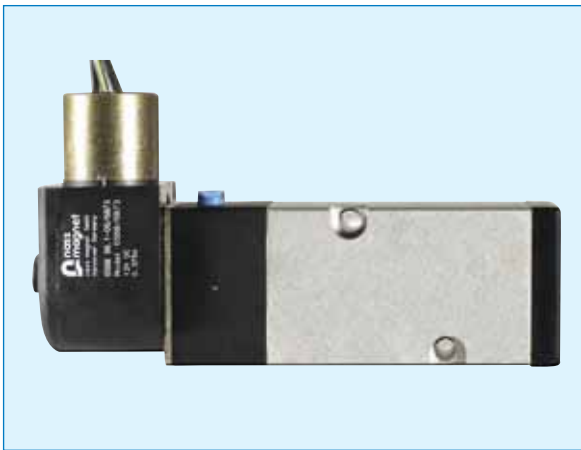


NEMA 4 - 4X



MODEL	VOLTAGE	INRUSH
NMR1-D1	110 VAC	62 mA
NMR1-D2	24 VDC	108 mA
NMR1-D12	12 VDC	204 mA
NMR1-D22	220 VAC	31 mA
NMR1-D24	24 VAC	See*

\* Consult factory



## SERIES NMR1 4-WAY EXPLOSION PROOF

4-way single solenoid namur.

- Cv=1.68.
- Ports 1/4" NPT.
- Duty cycle 100% continuous.
- Power consumption 2.5 watts.
- Pressure range 20 to 120 PSIG.
- Temperature range 35°F - 130°F (normal) 0°F - 130°F (with dry media).



Approved for Hazardous Locations

NEMA 4 - 4x,7,9

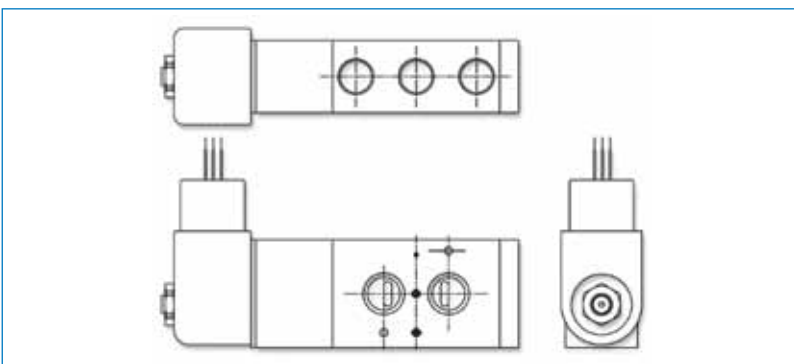
CL.I; Zone1; Ex mII T4; AEx mII

CL.I.; Div.1; GR. A,B,C,D

CL.II; GR. E,F,G - CL.III

T4 Ta= -20° c...+60°c

100% Duty cycle



MODEL	VOLTAGE	INRUSH
NMR1-EX1	110 VAC	74 mA
NMR1-EX2	24 VDC	190 mA
NMR1-EX12	12 VDC	372 mA
NMR1-EX22	220 VAC	36mA



## SERIES BV

NPT SIZE	PART#	LENGHT	HEX
1/8"	BV-1	7-16"	7/16"
1/4"	BV-2	5/8"	9/16"
3/8"	BV-3	3/4"	11/16"
1/2"	BV-4	7/8"	7/8"



## SERIES SBM

NPT SIZE	PART#	LENGHT	HEX
10/32"	SBM-M	45/64"	5/16"
1/8"	SBM-1	1-1/8"	7/16"
1/4"	SBM-2	1-3/8"	9/16"
3/8"	SBM-3	1-1/2"	11/16"
1/2"	SBM-4	1-7/8"	7/8"



## SERIES SCM

NPT SIZE	PART#	LENGHT	FLATS
1/8"	SCM-1	1-5/16"	1/2"
1/4"	SCM-2	1-9/16"	9/16"
3/8"	SCM-3	1-5/8"	11/16"
1/2"	SCM-4	2"	7/8"



## SERIES LIMIT SWITCH IP65

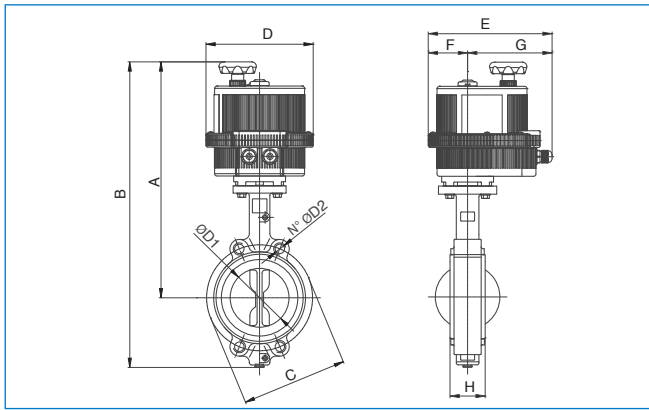
PART#	MOUNTING INFO
03900280014	1/2" NPT 32 mm bore
03900000149	1/2" NPT 52 - 270 mm bore

## SERIES E500S\*\*\*

Wt/Lbs	9.9	10.6	12.2	13.5	18.1	22.7	28.00	39.9	55.5	*
SIZE	1 1/2"	2"	2 1/2"	3"	4"	5"	6"	8"	10"	12"
A	13.11	13.40	14.29	14.53	16.33	16.80	18.04	19.38	20.69	*
B	16.08	16.89	17.79	18.27	20.82	21.80	23.51	26.27	26.68	*
C	4.74	4.74	5.49	6.00	7.50	8.50	9.50	11.75	14.25	17.00
D	6.18	6.18	6.18	6.18	7.28	7.28	8.31	8.31	8.74	*
E	7.50	7.50	7.50	7.50	8.43	8.43	9.33	9.33	9.72	*
F	2.38	2.38	2.38	2.66	2.66	3.31	3.31	3.03	3.03	*
G	5.12	5.12	5.12	5.12	5.77	6.02	6.02	6.02	6.69	*
H	1.61	1.65	1.76	1.78	2.05	2.14	2.20	2.34	2.58	3.03
N°	4	4	4	4	4	4	4	4	4	4
ØD2	0.75	0.75	0.75	0.75	0.75	0.87	0.87	0.87	1.00	1.00
ØD1	1.67	2.02	2.54	3.10	4.09	4.85	6.13	7.97	9.86	11.87
ACT.	VB 030	VB 030	VB 030	VB 030	VB 060	VB 110	VB 110	VB 190	VB 350	*

\* Consult factory

VOLTAGE SUFFIX		
	VOLTAGE SUFFIX	VOLTAGE
STANDARD	001	12V AC/DC
	002	24V AC/DC
	003	100-240 VAC
FAIL-SAFE	012	24V AC/DC
	013	100-240 VAC
POSITIONER	021	12V AC/DC
	022	24V AC/DC
	023	100-240 VAC
POSITIONER + FAIL SAFE	032	24V AC/DC
	033	100-240 VAC

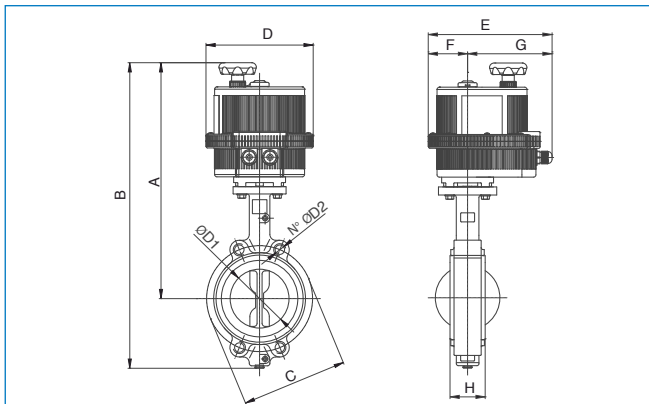


## SERIES E500N\*\*\*

Wt/Lbs	9.9	10.6	12.2	13.5	18.1	22.7	28.00	39.9	55.5	*
SIZE	1 1/2"	2"	2 1/2"	3"	4"	5"	6"	8"	10"	12"
A	13.11	13.40	14.29	14.53	16.33	16.80	18.04	19.38	20.69	*
B	16.08	16.89	17.79	18.27	20.82	21.80	23.51	26.27	26.68	*
C	4.74	4.74	5.49	6.00	7.50	8.50	9.50	11.75	14.25	17.00
D	6.18	6.18	6.18	6.18	7.28	7.28	8.31	8.31	8.74	*
E	7.50	7.50	7.50	7.50	8.43	8.43	9.33	9.33	9.72	*
F	2.38	2.38	2.38	2.66	2.66	3.31	3.31	3.03	3.03	*
G	5.12	5.12	5.12	5.12	5.77	6.02	6.02	6.02	6.69	*
H	1.61	1.65	1.76	1.78	2.05	2.14	2.20	2.34	2.58	3.03
N°	4	4	4	4	4	4	4	4	4	4
ØD2	0.75	0.75	0.75	0.75	0.75	0.87	0.87	0.87	1.00	1.00
ØD1	1.67	2.02	2.54	3.10	4.09	4.85	6.13	7.97	9.86	11.87
ACT.	VB 030	VB 030	VB 030	VB 030	VB 060	VB 110	VB 110	VB 190	VB 350	*

\* Consult factory.

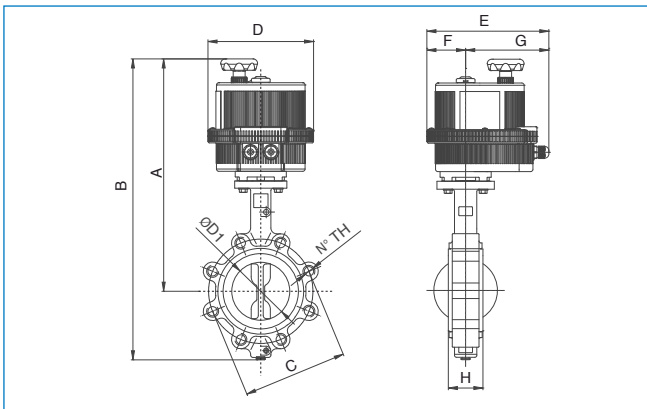
VOLTAGE SUFFIX		
	VOLTAGE SUFFIX	VOLTAGE
STANDARD	001	12V AC/DC
	002	24V AC/DC
	003	100-240 VAC
FAIL-SAFE	012	24V AC/DC
	013	100-240 VAC
POSITIONER	021	12V AC/DC
	022	24V AC/DC
	023	100-240 VAC
POSITIONER + FAIL SAFE	032	24V AC/DC
	033	100-240 VAC



## SERIES E501S \*\*\*

Wt/Lbs	12.2	13.5	14.4	15.5	27.1	31.3	42.1	50.90	72.4	*
SIZE	1 1/2"	2"	2 1/2"	3"	4"	5"	6"	8"	10"	12"
A	13.11	13.40	14.29	14.53	16.33	16.80	18.04	19.38	20.69	*
B	16.08	16.89	17.79	18.27	20.82	21.80	23.51	26.27	26.68	*
C	4.74	4.74	5.49	6.00	7.50	8.50	9.50	11.75	14.25	17.00
D	6.18	6.18	6.18	6.18	7.28	7.28	8.31	8.31	8.74	*
E	7.50	7.50	7.50	7.50	8.43	8.43	9.33	9.33	9.72	*
F	2.38	2.38	2.38	2.66	2.66	3.31	3.31	3.03	3.03	*
G	5.12	5.12	5.12	5.12	5.77	6.02	6.02	6.02	6.69	*
H	1.61	1.65	1.76	1.78	2.05	2.14	2.20	2.34	2.58	3.03
N°	4	4	4	4	8	8	8	8	12	12
TH	5/8-11	5/8-11	5/8-11	5/8-11	5/8-11	3/4-10	3/4-10	3/4-10	7/8-9	7/8-9
ØD1	1.67	2.02	2.54	3.10	4.09	4.85	6.13	7.97	9.86	11.87
ACT.	VB 030	VB 030	VB 030	VB 030	VB 060	VB 060	VB 110	VB 190	VB 350	*

\* Consult factory

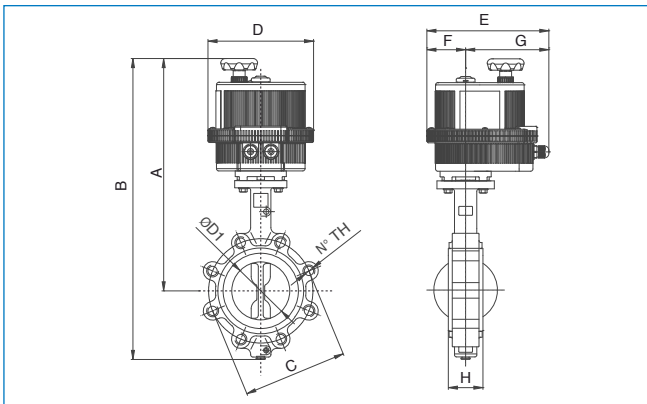


VOLTAGE SUFFIX		
	VOLTAGE SUFFIX	VOLTAGE
STANDARD	001	12V AC/DC
	002	24V AC/DC
	003	100-240 VAC
FAIL-SAFE	012	24V AC/DC
	013	100-240 VAC
POSITIONER	021	12V AC/DC
	022	24V AC/DC
	023	100-240 VAC
POSITIONER + FAIL SAFE	032	24V AC/DC
	033	100-240 VAC

## SERIES E501N \*\*\*

Wt/Lbs	12.2	13.5	14.4	15.5	27.1	31.3	42.1	50.90	72.4	*
SIZE	1 1/2"	2"	2 1/2"	3"	4"	5"	6"	8"	10"	12"
A	13.11	13.40	14.29	14.53	16.33	16.80	18.04	19.38	20.69	*
B	16.08	16.89	17.79	18.27	20.82	21.80	23.51	26.27	26.68	*
C	4.74	4.74	5.49	6.00	7.50	8.50	9.50	11.75	14.25	17.00
D	6.18	6.18	6.18	6.18	7.28	7.28	8.31	8.31	8.74	*
E	7.50	7.50	7.50	7.50	8.43	8.43	9.33	9.33	9.72	*
F	2.38	2.38	2.38	2.66	2.66	3.31	3.31	3.03	3.03	*
G	5.12	5.12	5.12	5.12	5.77	6.02	6.02	6.02	6.69	*
H	1.61	1.65	1.76	1.78	2.05	2.14	2.20	2.34	2.58	3.03
N°	4	4	4	4	8	8	8	8	12	12
TH	5/8-11	5/8-11	5/8-11	5/8-11	5/8-11	3/4-10	3/4-10	3/4-10	7/8-9	7/8-9
ØD1	1.67	2.02	2.54	3.10	4.09	4.85	6.13	7.97	9.86	11.87
ACT.	VB 030	VB 030	VB 030	VB 030	VB 060	VB 060	VB 110	VB 190	VB 350	*

\* Consult factory



VOLTAGE SUFFIX		
	VOLTAGE SUFFIX	VOLTAGE
STANDARD	001	12V AC/DC
	002	24V AC/DC
	003	100-240 VAC
FAIL-SAFE	012	24V AC/DC
	013	100-240 VAC
POSITIONER	021	12V AC/DC
	022	24V AC/DC
	023	100-240 VAC
POSITIONER + FAIL SAFE	032	24V AC/DC
	033	100-240 VAC