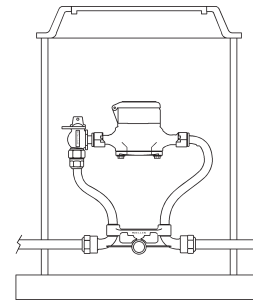


Multi-purpose thread ends (H-1405N shown)



Typical installation of a horizontal inlet and outlet copper meter yoke.

Copper meter yokes with horizontal inlet and outlet and multi-purpose thread ends

Catalog Number	H-1400N	H-1401N	H-1404N	H-1405N	B-2404N	B-2405N
Description	Plain yoke	With test valve	With lock wing ground key angle meter stop	With lock wing ground key angle meter stop and test valve	With lock wing Mueller 300™ Angle Ball Valve	With lock wing Mueller 300™ Angle Ball Valve and test valve



M-98™ ASSE approved top entry vertical check valve

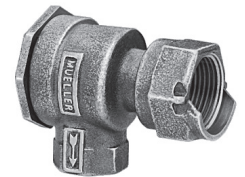
Check valve options

Mueller Copper Meter Yokes can be ordered with one of the following: an ASSE approved top entry vertical check valve; an ASSE approved dual check valve; a dual check valve (ASSE non-approved). To order the ASSE approved top entry check feature, add a suffix of **-6A** to the yoke catalog number; add **-6D** for the same check with a test drain. For the dual check feature, add a suffix of **2A** to the yoke catalog number for the ASSE approved model or **-2** suffix for the nonapproved model. Examples:

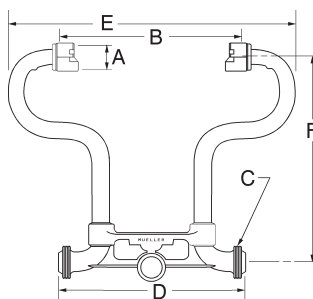
H-1404-6DN for the ASSE approved top entry vertical check with a test drain;

H-1404-2AN for the ASSE approved model angle dual check valve.

* Add "R" to the end of the yoke catalog number to order a reduced port Angle



Angle dual check valve



Dimensions

Meter Size	5/8"	5/8" x 3/4"	3/4"	1"
Nominal size of I.P. thread in meter nut	3/4"	1"	1"	1-1/4"
A	1-1/16"	1-5/16"	1-5/16"	1-5/8"
B	7-7/8"	7-7/8"	9-5/16"	11-1/16"
C - nominal pipe size of inlet and outlet	3/4"	3/4"	3/4"	1"
D	7-15/16"	7-15/16"	9-3/8"	11-1/8"
E	12-5/8"	12-5/8"	14-1/4"	17-1/4"
F - minimum riser height	7" (9"*)	7" (9"*)	8" (10"*)	10" (12"*)
Other riser heights available	9", 12", 15", 18", 21", 24", 27", 30", 33", and 36"	9", 12", 15", 18", 21", 24", 27", 30", 33", and 36"	12", 15", 18", 21", 24", 27", 30", 33", and 36"	12", 15", 18", 21", 24", 27", 30", 33", and 36"

Ball Valve; EXAMPLE: 5/8x3/4x7 B-2404R.

** Minimum with 6A or 6D option.

Copper Meter Yokes are normally supplied less end connections. See pages 8A.48 and 8A.49 for end connections that can be used with these yokes. Note: the 5/8", 5/8" x 3/4", and 3/4" sizes are furnished with a tie bar on heights greater than 15". The 1" size is furnished with a tie bar on heights greater than 18".

SPECIFY METER SIZE, RISER HEIGHT AND CATALOG NUMBER.

Mueller Copper Meter Yokes are manufactured and tested in accordance with ANSI/AWWA C800. Components in contact with potable water will also comply with latest requirements of the Federal Safe Drinking Water Act.

April 28, 2017

Subject: Mueller Co. Service Brass

To Whom It May Concern:

This will certify that Mueller Co. service brass, which includes corporation stops, curb stops, service fittings, meter valves, copper meter yokes and end connections, are manufactured and tested in accordance with the latest revision of AWWA C800 standard and are certified to NSF 61.

Components that come in contact with potable water comply with the latest requirements of the U.S. Federal Safe Drinking Water Act that was enacted on January 4, 2014.

Sincerely,



Larry Aulich
Senior Product Manager
Mueller Company