

# DRYCONN®

## WATERPROOF CONNECTORS

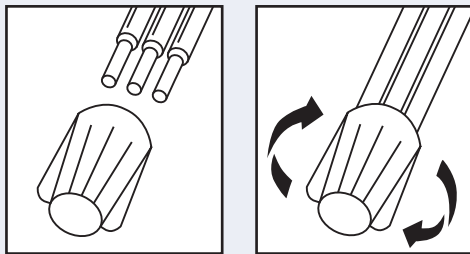
Filled Connectors for Direct Bury Use



### INSTALLATION INSTRUCTIONS

IMPORTANT: Turn off power before installing or removing connector. Product to be used in accordance with local and national codes.

1. Strip wires 3/4" (19.1mm).
2. Align any frayed strands or conductors.
3. Pre-twisting unnecessary. Place stripped wires together with ends of insulation even.
4. Twist connector onto wires pushing firmly until hand-tight. Do not over torque.
5. Wipe sealant in and around conductors and connector opening while tightening.



### NEC Required for Outdoor Connections

Selected 600V Wire Combinations  
For use with solid and/or stranded combinations.

1 or 2 #6	2-3 #8	2 #6 w/1 #10 or 1 #12
2-5 #10	1 #10 w/2-4 #12	2 #6 w/1 or 2 #14
3-6 #12	1 #10 w/3-5 #14	4 #12 w/1 #14

Contact factory for a complete list of wire combinations at 800.633.0232.

### Extra Large Direct Bury\* Waterproof Connectors

Catalog #	Selling Unit
10975	Box of 75
10990	Card of 2
10999	Bag of 8

### PRODUCT SPECIFICATIONS & MEASUREMENTS

Max. Voltage: 600V max. building wire  
(1000V max. signs or luminaires)

Connector Size: 2 13/32" x 63/64"

Wire Type: Copper/Copper

Wire Range: Min #14/Max #6

Temperature Rating: 105°C (221°F)

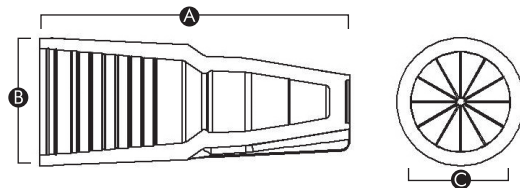
UL Designation: LDB\*

Measurements (Inches):

A - 2.41

B - 0.99

C - 0.78



UL Listed as a Sealed Wire Connector. For use in dry, damp, wet locations below or above grade when used in an enclosure. \*For use in direct bury applications when operating at 30 volts or less.

