



# Ultimate Drainage Solution

StormDrain Plus ensures a long-lasting, permanent solution to the collection and dispersal of standing surface water.

## Technical Data

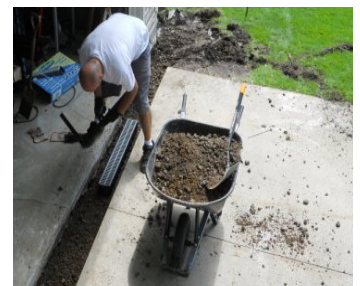
- Designed to withstand automotive weight for Class B (loads of 61-175 psi), medium-duty pneumatic tire traffic, autos and light trucks at speeds less than 20 mph.
- All products are "UV" inhibited
- Grates are ADA and heel guard compliant
- Grates have a non-slip textured surface
- Clips or screws are not required to assemble
- Concave grates trap and transfer water



Water Management

| Part Number | Description   |
|-------------|---|
| FSDP-CHGG   | 39.5" grey Channel with grate   |
| FSDP-GP3G   | Three pieces of grey Channel with grate, one End Cap and one End Outlet |
| FSDP-QUAD   | Four-way connector  |
| FSDP-EC     | End Cap   |
| FSDP-EO     | End Outlet  |

| Replacement Part Number | Description       |
|-------------------------|-------------------|
| FSDP-CH                 | Grey Channel ONLY |
| FSDP-GG                 | Grey grate ONLY   |



# STRONG & EASY

Ideal for driveways, patios, swimming pools, sports courts, gardens and more!