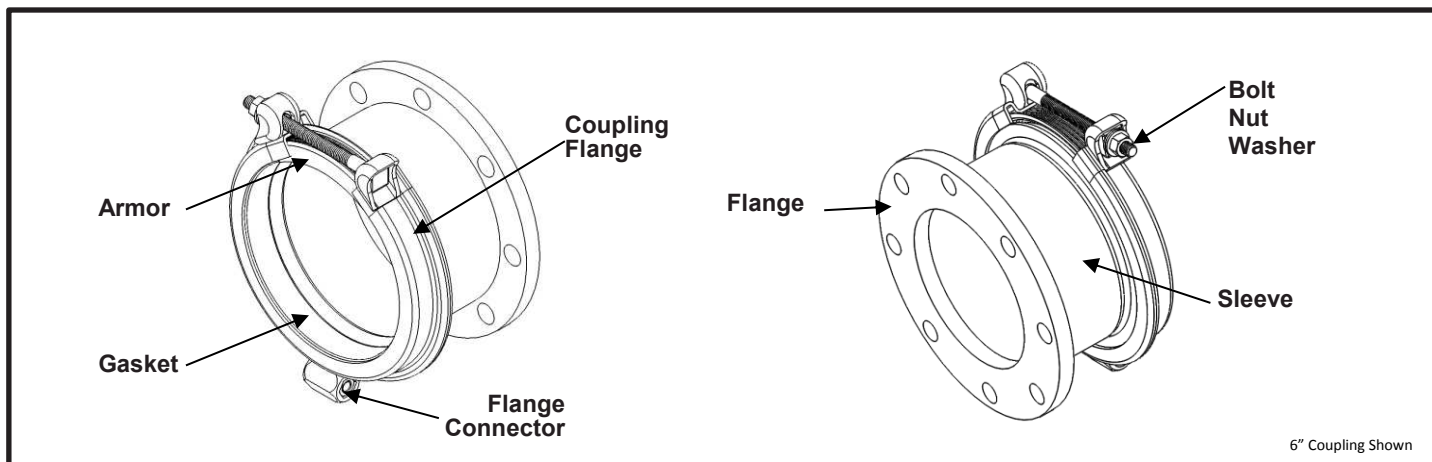


SPECIFICATION

TOP BOLT® WIDE RANGE FLANGED COUPLING ADAPTER MODEL 921



APPLICATIONS

- **Typical Uses**
 - Connects a wide variety of plain-end pipe to flanged fittings, meters, valves, or other flanged equipment.
- **Standard Pipe Sizes**
 - 2" to 12" nominal
- **Type of Pipe**
 - Carbon Steel, Stainless Steel, Ductile Iron, Asbestos Cement, PVC, Copper Tube, HDPE
(see notes for thin wall PVC & HDPE applications)
- **Working Pressure**
 - 175 psi

MATERIALS

- **Coupling Flange**
 - Carbon Steel per ASTM A283C, A285A or A36
 - Flexi-Coat® fusion bonded epoxy finish which meets application methods AWWA C213
 - Integral bolt head pocket for one wrench installation
 - Split flange design
- **Flange**
 - 2" – standard meter coupling flange Meets ANSI B16.5.
 - 3" thru 12" – AWWA C207 Class D ANSI 150 lb. drilling
 - Flexi-Coat® fusion bonded epoxy finish which meets application methods AWWA C213
- **Sleeve**
 - Carbon Steel per ASTM A283C, A285A, or A36
 - Flexi-Coat® fusion bonded epoxy finish which meets application methods AWWA C213
- **Gasket**
 - Nitrile (Buna-N) per ASTM D2000
 - NSF/ANSI 61 and 372 certified
 - Compounded to resist water, oil, acids, alkalies, most (aliphatic) hydrocarbon fluids, and many other chemicals
 - Temperature range: -20°F to +180°F
 - Bi-Directional removable inner gasket to accommodate wide range of pipe
 - Inner gasket can be reinstalled after removal
 - Allow for up to 4° of pipe deflection



SPECIFICATION

TOP BOLT® WIDE RANGE FLANGED COUPLING ADAPTER

MODEL 921

- **Armor**
 - Hardened Type 304 Stainless Steel
 - Corrugated design helps reduce friction for better sliding action when tightening
- **Bolt**
 - Type 304 Stainless Steel
 - Epoxy Coated to help prevent galling
 - 9/16" - 12 UNC, Swivel Head Bolt with swivel type washer on opposite end
 - Rolled threads for improved physical characteristics, greater thread accuracy and smooth surface finish
 - Requires tightening of only one bolt for ease of fitting installation and removal
- **Coupling Flange Connector Bolt**
 - Type 304 Stainless Steel
 - 1/2" - 13 UNC, Countersunk Allen Head
- **Steel Washer**
 - Type 304 Stainless Steel
 - 9/16"
- **Nylon Washer**
 - Nylon 6/6
 - 9/16"
 - Located under Steel Washer for better transfer of bolt torque
- **Nut**
 - Type 304 Stainless Steel
 - 9/16" - 12 UNC
 - Fluoropolymer finish to prevent galling

OPTIONS

- Anode connector available for cathodic protection
- Other Flange configurations available upon request

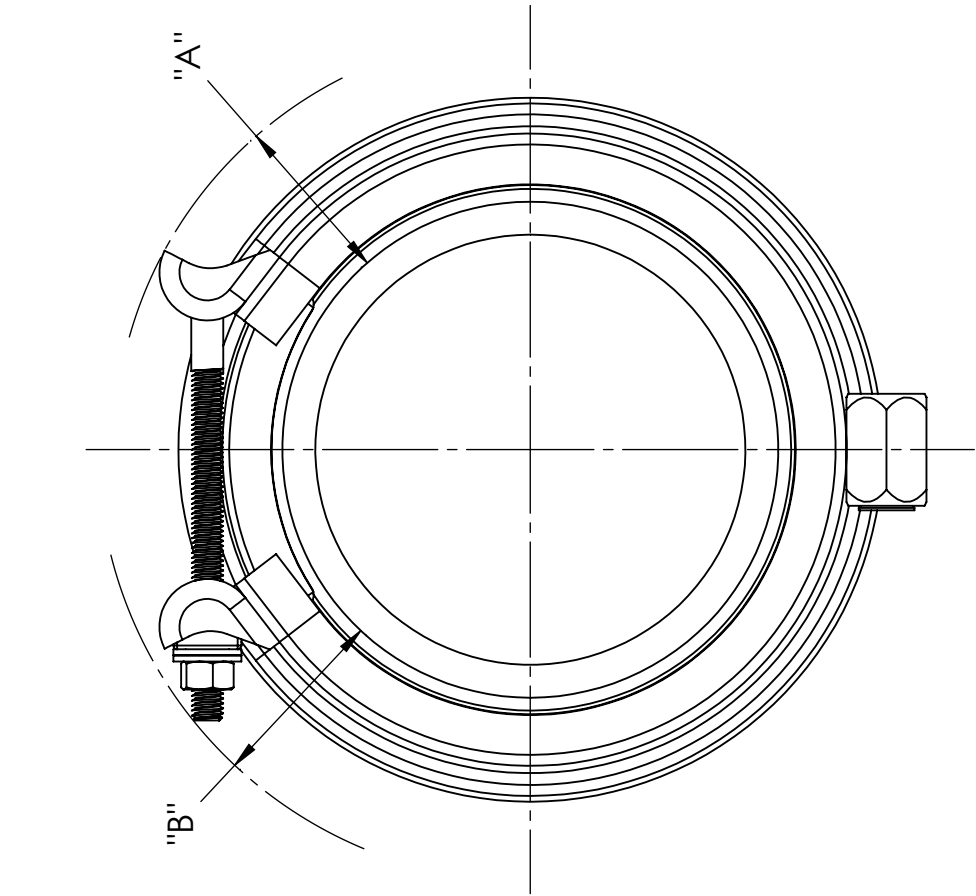
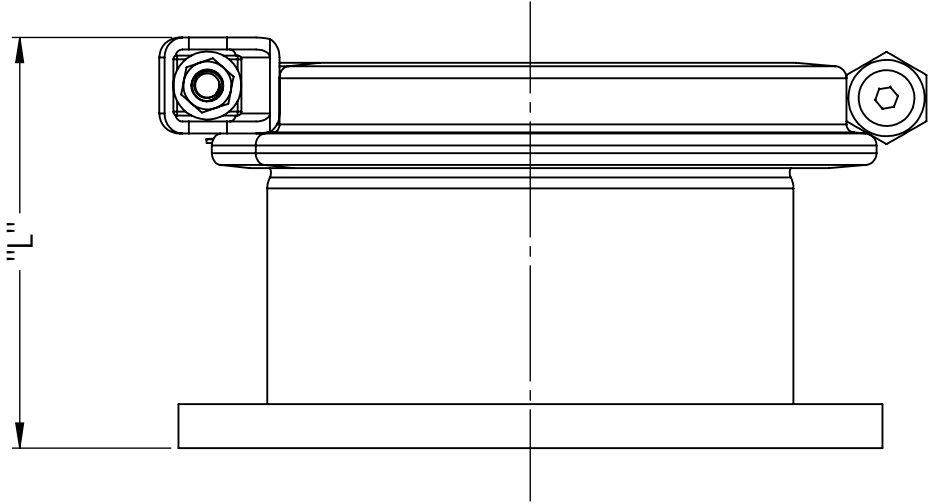
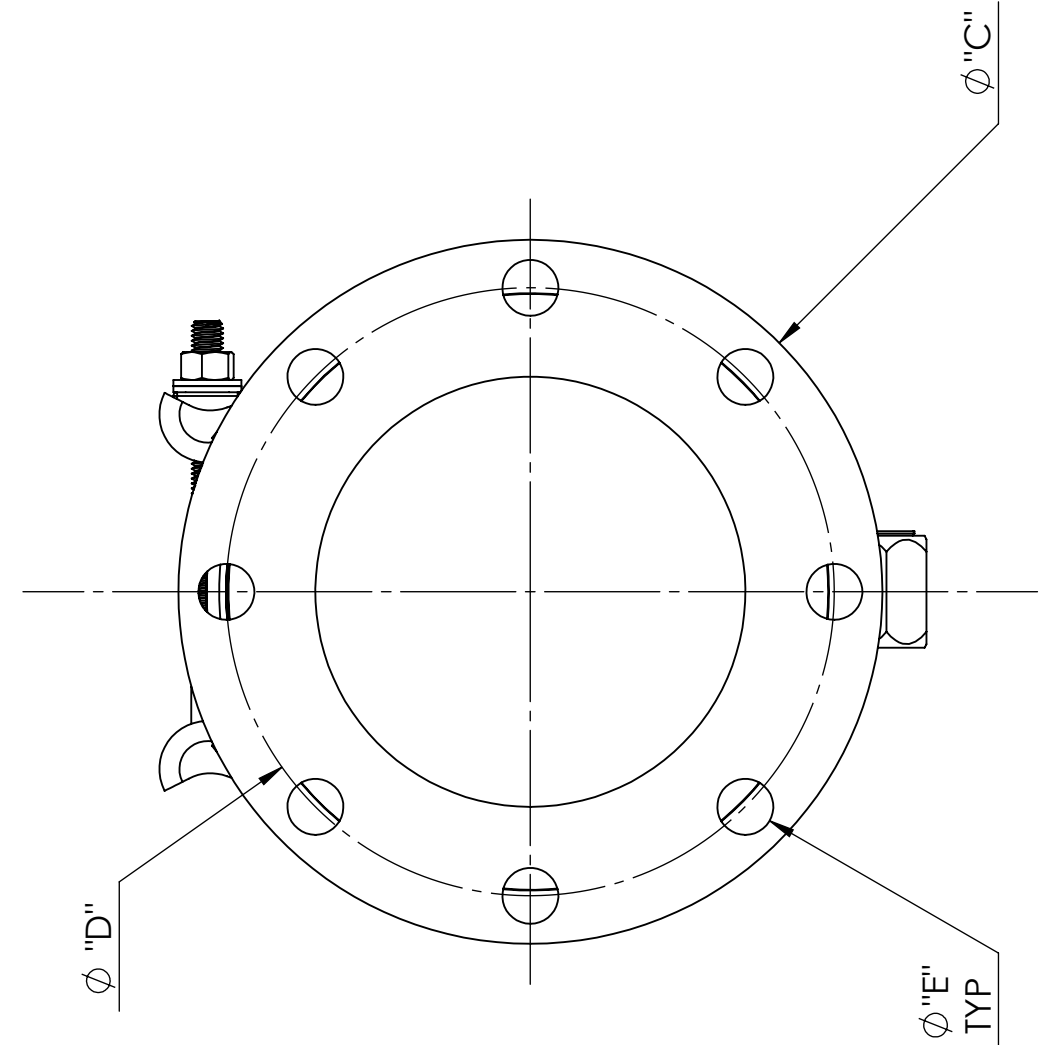
LISTINGS

- UL certified to NSF/ANSI 61 and 372
- Meets applicable AWWA C219 standards

NOTES

- This product **does not** restrain the pipe from pulling out of the fitting
- Pipe stiffeners **are required** when this product is used on HDPE and thin wall PVC pipe
- Top-Bolt® and Flexi-Coat® are registered trademarks of Smith-Blair Inc.
- These product specifications were correct at the time of publication and are subject to change without notice
- See the Smith-Blair® web site for part numbers and ordering information
- See the Smith-Blair® web site for warranty information
- See the Smith-Blair® web site for corrosion warnings

30 Globe Ave, Texarkana, AR 71854
Ph: 870-773-5127 • Fax: 870-773-5212
Toll-Free Numbers: Ph: 800-643-9705 • Fax: 800-648-6792



- NOTES:
- SEE CATALOG FOR PART NUMBERS AND RANGES.
 - 6" COUPLING SHOWN.

NOMINAL SIZE (IN)	A	B		C	D	E	L	FLANGE BOLT QTY.	BOXED WEIGHT (LBS)
		OPEN	CLOSED						
2	2.88	3.50	5.00 MAX	6.00	4.50	.750	6.50	2	8
3	2.88	3.50	5.00 MAX	7.50	6.00	.750	5.38	4	12
4	3.00	3.50	5.00 MAX	9.00	7.50	.750	5.50	8	17
6	3.00	3.50	5.00 MAX	11.00	9.50	.875	6.56	8	23
8	3.00	3.00	5.00 MAX	13.50	11.75	.875	6.56	8	30
10	3.13	3.00	5.00 MAX	16.00	14.25	1.00	6.56	12	37
12	3.25	3.00	5.00 MAX	19.00	17.00	1.00	6.69	12	50

WRENCH SIZE CHART	
NUT/BOLT	SIZE
1/2"-13UNC ALLEN	5/16"
9/16"-12UNC	7/8"

CERTIFIED TO NSF/ANSI 61-G & 372

TOLERANCES U.N.O. XX= ±.03 XXX= ±.015 FRACTIONS= ±.015 ANGLES= ±1° MACH. FIN=		NOTES: REMOVE BURRS AND SHARP EDGES DO NOT SCALE DWG.		APP'D	DATE
ALL DIMENSIONS ARE IN INCHES.		SCALE: N/A		CK'D	DATE
				DRN	DATE
		BCM		6/9/15	
TITLE					
SPECIFICATION					
TOP BOLT® FLANGED COUPLING ADAPTER					
MODEL 921					
P/N			N/A		
SMITH-BLAIR, Inc. TEXARKANA, ARKANSAS			SPEC_921.DRW		
			1 OF 1		
			SHEET		
			3/18/16		
			REV.		