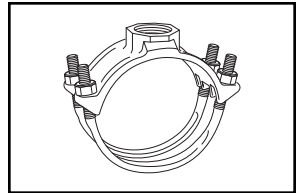


# SUBMITTAL INFORMATION

## Iron Service Saddles - (F202-xxx-TAP-I style)

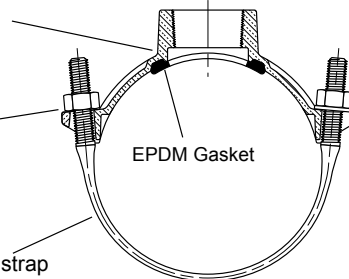


### F202 DOUBLE STRAP IRON SERVICE SADDLES

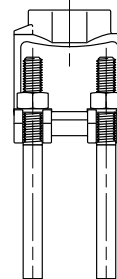
Finish: Black E-Coating

Closed lug

Zinc plated carbon steel strap



EPDM Gasket



Zinc plated steel nuts

Zinc plated washers (open lug side)



CLASSIFIED  
UL  
WATER QUALITY

NOM. PIPE SIZE	O.D. RANGE	APPROX. WT. LBS.	CATALOG NUMBER	✓ SUBMITTED ITEM(S)
2"	*2.35 - 2.50	2.8	F202-250-TAP-I	
2-1/2"	*2.75 - 2.90	2.8	F202-290-TAP-I	
3"	**3.46 - 3.80	4.8	F202-380-TAP-I	
	**3.80 - 4.25	5.5	F202-425-TAP-I	
4"	**4.26 - 4.80	5.4	F202-480-TAP-I	
	**4.74 - 5.26	5.4	F202-526-TAP-I	
6"	**5.94 - 6.69	6.5	F202-669-TAP-I	
	**6.63 - 6.90	6.5	F202-690-TAP-I	
	**6.84 - 7.60	6.8	F202-760-TAP-I	
8"	*7.93 - 8.71	7.4	F202-871-TAP-I	
	8.63 - 9.05	7.4	F202-905-TAP-I	
	8.99 - 9.79	8.2	F202-979-TAP-I	
10"	10.00 - 10.75	10.4	F202-1075-TAP-I	
	10.75 - 11.10	11.5	F202-1110-TAP-I	
	11.10 - 12.12	11.5	F202-1212-TAP-I	
12"	12.00 - 12.75	12.5	F202-1275-TAP-I	
	12.75 - 13.20	12.5	F202-1320-TAP-I	
	13.20 - 14.38	12.5	F202-1438-TAP-I	

#### OUTLET TAP CODE

##### CC (AWWA) THREAD

THREAD	CODE NUMBER	✓ SUBMITTED ITEM(S)
3/4" CC	CC3	
1" CC	CC4	
1-1/4" CC	Δ CC5	
1-1/2" CC	CC6	
2" CC	CC7	

##### IP THREAD

THREAD	CODE NUMBER	✓ SUBMITTED ITEM(S)
3/4" IP	IP3	
1" IP	IP4	
1-1/4" IP	Δ IP5	
1-1/2" IP	IP6	
2" IP	IP7	
2-1/2" IP	IP8	

Δ Contact factory for availability

I = Imported casting

\* Saddles for this pipe range are only available with 3/4" and 1" taps

\*\* Saddles for this pipe range are not available with 2" CC (CC7) or 2-1/2" IP (IP8) taps.

### FEATURES

- Body made of high strength ductile iron per ASTM A536
- Straps are 5/8" AISI C1010 steel, zinc plated with Di-chromate or Trivalent seal. Each strap has 5/8" flat bearing surface. 1/2" straps are furnished on saddles 3" and smaller
- Gasket is EPDM rubber, ASTM D2000
- Finish on saddle body is black e-coating
- UL Classified to ANSI/NSF Standard 61

The Ford Meter Box Company considers the information in this submittal form to be correct at the time of publication. Item and option availability, including specifications, are subject to change without notice. Please verify that your product information is current.



**The Ford Meter Box Company, Inc.**

P.O. Box 443, Wabash, Indiana U.S.A. 46992-0443

Phone: 260-563-3171 / Fax: 800-826-3487

Overseas Fax: 260-563-0167

www.fordmeterbox.com

11/09/15

Submitted By: