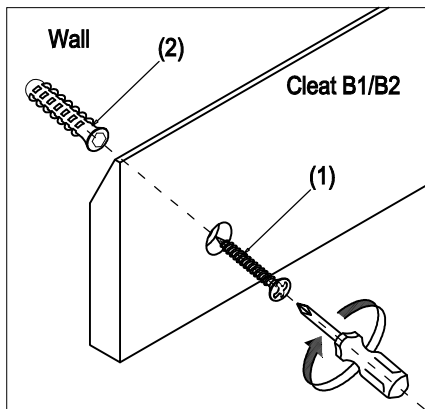
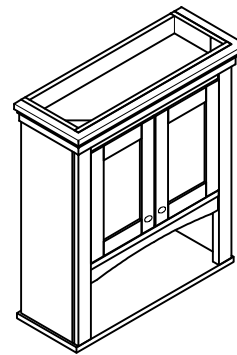
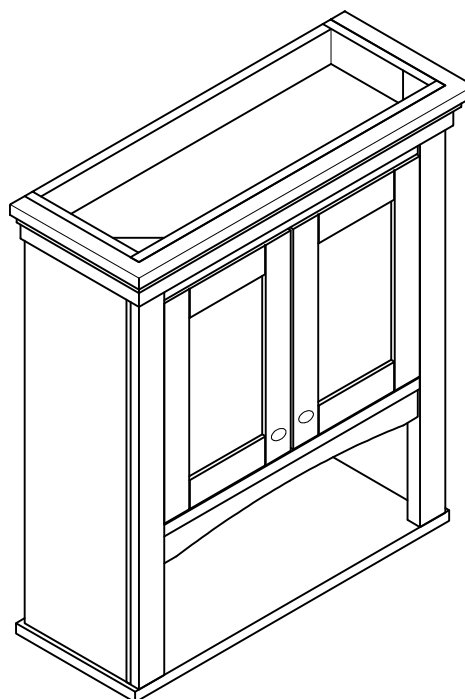
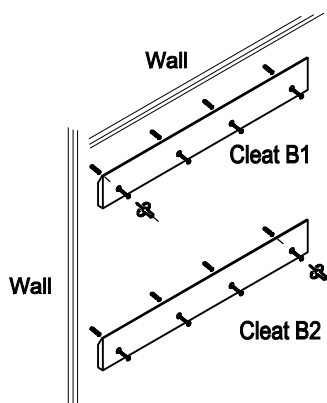


1512-BV24






24" BATH VALET



Install cleat B1 & B2 on the wall then mount the cabinet



It is recommended for the cabinet to be mounted to the studs.
 If mounting to dry wall use the plastic anchors provided.

PARTS INCLUDED			TOOLS AND MATERIALS		
1	 $\Phi 8 \times 32\text{mm}$	8 PCS			
2	 $\Phi 9 \times 28\text{mm}$ use for dry wall only	8 PCS	Screwdriver	Tape measure	Pencil

Fairmont Designs highly recommends that you seek a professional installation specialist if you are unsure of installation. Please note: Fairmont Designs is not responsible for any installation error, damages or injuries, actual or consequential resulting from possible printing error in instruction