

# ProPEX lead-free (LF) brass CPVC spigot adapters

Submittal information

Date submitted:

## Project Information

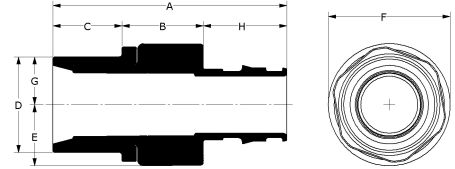
|                                 |                 |
|---------------------------------|-----------------|
| Job name :                      | Location :      |
| Engineer :                      | Date submitted: |
| Contractor :                    | Submitted by:   |
| Manufacturer's representative : | Approved by :   |

## Technical Data

|                        |  |
|------------------------|--|
| Material               | LF Brass   |
| Temp./pressure ratings | 73°F (23°C) at 160 psi (11 bar)<br>180°F (82°C) at 100 psi (6.9 bar)<br>200°F (93°C) at 80 psi (5.5 bar) |

## Product information and application use

ProPEX® Lead-free (LF) Brass CPVC Spigot Adapters transition Uponor PEX tubing to CPVC copper tube size (CTS) fittings for use in hot and cold domestic potable water systems and hydronic radiant heating and cooling systems.



| Part name   | Part no.  | A [inch] | B [inch] | C [inch] | D [inch] | E [inch] | F [inch] | G [inch] | H [inch] | Weight per UOM [lbs/UOM] | End type 1    |
|---|-----------|----------|----------|----------|----------|----------|----------|----------|----------|--------------------------|---------------|
| ProPEX LF Brass x CPVC Spigot Adapter, 1 1/4" PEX x 1 1/4" CPVC (CTS) | CP4501313 | 3.705    | 1.14     | 1.12     | 1.373    | 1.055    | 2.11     | 0.687    | 1.445    | 0.6                      | ProPEX 1-1/4" |
| ProPEX LF Brass x CPVC Spigot Adapter, 1 1/2" PEX x 1 1/2" CPVC (CTS) | CP4501515 | 4.204    | 1.18     | 1.32     | 1.627    | 1.2      | 2.4      | 0.813    | 1.704    | 0.75                     | ProPEX 1-1/2" |
| ProPEX LF Brass x CPVC Spigot Adapter, 2" PEX x 2" CPVC (CTS)         | CP4502020 | 5.287    | 1.42     | 1.72     | 2.123    | 1.5      | 3.0      | 1.061    | 2.147    | 1.4                      | ProPEX 2"     |

| Part name   | Part no.  | End type 2  |
|---|-----------|-------------|
| ProPEX LF Brass x CPVC Spigot Adapter, 1 1/4" PEX x 1 1/4" CPVC (CTS) | CP4501313 | CPVC 1-1/4" |
| ProPEX LF Brass x CPVC Spigot Adapter, 1 1/2" PEX x 1 1/2" CPVC (CTS) | CP4501515 | CPVC 1-1/2" |
| ProPEX LF Brass x CPVC Spigot Adapter, 2" PEX x 2" CPVC (CTS)         | CP4502020 | CPVC 2"     |

## Installation

Use the appropriate Uponor ProPEX Ring for the tubing (sold separately). Refer to the Uponor AquaPEX® Professional Plumbing Installation Guide or Uponor Radiant Floor Heating Installation Handbook for additional information. Follow all CPVC instructions and guidelines for proper CPVC connections.

## Related applications

- PEX-a Plumbing Systems
- Radiant Heating and Cooling Systems
- Permafrost Protection Systems
- Turf Conditioning Systems
- AquaSAFE™ Fire Safety Systems

## Codes

UPC|IBC|IRC|IPC|NPC of Canada|UMC|NSPC|IMC

## Standards

NSF-372|ASTM F877|ASTM F1960|CSA B137.5|ASTM D2846|NSF-61|NSF-14

## Listings

IAPMO-ES|HUD MR 1269|ICC-ES-PMG|cNSFus-pw-G|U.P.Code|cQAlus P321

## Trademark Information

ProPEX® is a registered trademark of Uponor Inc. ProPEX™ is a trademark of Uponor Ltd.

## Contact Information

Uponor Inc.  
5925 148th Street West  
Apple Valley, MN 55124  
T 800.321.4739  
F 952.891.2008

Uponor Ltd.  
6510 Kennedy Road  
Mississauga, ON L5T 2X4  
T 888.594.7726  
F 800.636.9517