

MODEL 350ASTDA



Stainless Steel Double Check Detector Assembly – Backflow Preventers 2-1/2" to 10"

Repair Kit Components		2-1/2"		2-1/2" - 4"			2-1/2" - 6"	3" and 4"		6"				8"		8" and 10"		10"		
Size Range	RK212-350ASTDACK2	RK4-350	RK4-350DA	RK4-350ASTCK1	BRK4-SSLBF-SEAT2RTNR	RK4-350AST-COVRPLATE	RK4-350ASTDACK2	RK6-350	RK6-350DA	RK6-350ASTCK1	RK6-350ASTDACK2	BRK6-SSLBF-SEAT1RTNR	BRK6-SSLBF-SEAT2RTNR	RK8-350ASTCK1	RK8-350	RK8-350DA	RK8-350ASTDACK2	RK8-350-COVRPLATE	RK10-350ASTCK1	
2-1/2"	•	•	•	•	•	•														
3"		•	•	•	•	•	•													
4"		•	•	•	•	•	•													
6"						•		•	•	•	•	•	•							
8"														•	•	•	•	•	•	•
10"															•	•	•	•	•	•
Item #	Item Description																			
1	O-Ring, Cover Plate					•													•	
2	Cover Plate					•													•	
3	Bolt, Cover Plate					•(x2)													•(x2)	
4	Seat Retainer #1				•(x2)					•		•(x6)								
5	Seat Retainer #2				•(x6)					•(x2)			•(x6)							
6	O-Ring, Seat	•	•(x2)	•(x2)	•		•	•(x2)	•(x2)	•	•			•	•(x2)	•(x2)	•		•	•
7	Bolt, Poppet Retainer	•(x4)			•(x4)					•(x4)	•(x4)			•(x6)				•(x6)	•(x6)	•(x6)
8	Handle, #1 Poppet Assembly				•					•										
9	Washer	•(x4)			•(x4)			•(x4)	•(x4)	•(x4)	•(x4)			•(x6)				•(x6)	•(x6)	•(x6)
10	O-Ring, Retainer	•(x4)	•(x8)	•(x8)	•(x4)		•(x4)	•(x8)	•(x8)	•(x4)	•(x4)			•(x6)	•(x12)	•(x12)	•(x6)		•(x6)	•(x6)
11	Poppet Retainer	•			•		•			•	•			•				•	•	•
12	Seal Ring	•	•(x2)	•(x2)	•		•	•(x2)	•(x2)	•	•			•	•(x2)	•(x2)	•		•	•
13	Seat Assembly, #1 Poppet				•					•				•					•	•
14	Seat Assembly, #2 Poppet	•					•			•								•		•
15	Washer, Seat Retainer													•(x4)				•(x7)	•(x4)	•(x4)
16	Nut, Seat Retainer													•(x4)				•(x7)	•(x4)	•(x4)
	Bypass Rubber Repair Kit			•						•						•				

Whole Goods (Available for individual sale)

Item #	Item Description	2-1/2"	3"	4"	6"	8"	10"
17	Gate Valve, OS&Y (GxG)	212-480SYG	3-480SYG	4-480SYG	6-480SYG	8-480SYG	10-480SYG
	Gate Valve, OS&Y (GxF)	212-480SYGXF	3-480SYGXF	4-480SYGXF	6-480SYGXF	8-480SYGXF	10-480SYGXF
	Gate Valve, Post Indicator (GxG)	212-48PIVG	3-48PIVG	4-48PIVG	6-48PIVG	8-48PIVG	10-48PIVG
	Gate Valve, Post Indicator (GxF)	212-48GXF	3-48GXF	4-48GXF	6-48GXF	8-48GXF	10-48GXF
	Butterfly Valve (GxG)	212-49G	3-49G	4-49G	6-49G	8-49G	10-49G
	Butterfly Valve (GxF)	212-49GXF	3-49GXF	4-49GXF	6-49GXF	8-49GXF	10-49GXF
18	Ball Valve, FxF		12-850XL			34-850XL	
19	Ball Valve, MxF		12-850MXL			34-850MXL	
20	Cover Retainer Assembly		6-23		8-23		12-23
21	Grooved Coupling	212-23	3-23	4-23	6-23	8-23	10-23
22	Cover		3509ST-3		3510ST-3		3511ST-3
23	Water Meter				557-54XL		
24	Bypass Valve				950XLD		
25	Bypass Assembly		RK212-350ASTDA-BP-LM		RK6-350ASTDA-BP-LM		RK8-350ASTDA-BP-LM
	Bypass Rubber Repair Kit				RK34-950XLR		

Item No.	Repair Kit Description
	2-1/2"
RK212-350ASTDACK2	#2 Check Assembly Repair Kit, 2-1/2" 350ASTDA
	2-1/2" - 4"
RK4-350	Standard Repair Kit, 2-1/2" - 4" 350ASTDA
RK4-350DA	Main and Bypass Rubber Repair Kit 2-1/2" - 4" 350ASTDA
RK4-350ASTCK1	#1 Check Assembly Repair Kit, 2-1/2" - 4" 350ASTDA
BRK4-SSLBF-SEAT2RTNR	Bulk #2 Seat Retainer Repair Kit, 2-1/2" - 4" 350ASTDA
	2-1/2" - 6"
RK4-350AST-COVRPLATE	Cover Plate Repair Kit, 2-1/2" - 6" 350ASTDA
	3" and 4"
RK4-350ASTDACK2	#2 Check Assembly Repair Kit, 2-1/2" - 4" 350ASTDA

Item No.	Repair Kit Description
	6"
RK6-350	Standard Repair Kit, 6" 350ASTDA
RK6-350DA	Main and Bypass Rubber Repair Kit 6" 350ASTDA
RK6-350ASTCK1	#1 Check Assembly Repair Kit, 6" 350ASTDA
RK6-350ASTDACK2	#2 Check Assembly Repair Kit, 6" 350ASTDA
BRK6-SSLBF-SEAT1RTNR	Bulk #1 Seat Retainer Repair Kit, 6" 350ASTDA
BRK6-SSLBF-SEAT2RTNR	Bulk #2 Seat Retainer Repair Kit, 6" 350ASTDA
	8"
RK8-350ASTCK1	#1 Check Assembly Repair Kit, 8" 350ASTDA
	8" and 10"
RK8-350	Standard Repair Kit, 8" and 10" 350ASTDA
RK8-350DA	Main and Bypass Rubber Repair Kit 8" and 10" 350ASTDA
RK8-350ASTDACK2	#2 Check Assembly Repair Kit, 8" and 10" 350ASTDA
RK8-350-COVRPLATE	Cover Plate Repair Kit, 8" and 10" 350ASTDA
	10"
RK10-350ASTCK1	#1 Check Assembly Repair Kit, 10" 350ASTDA

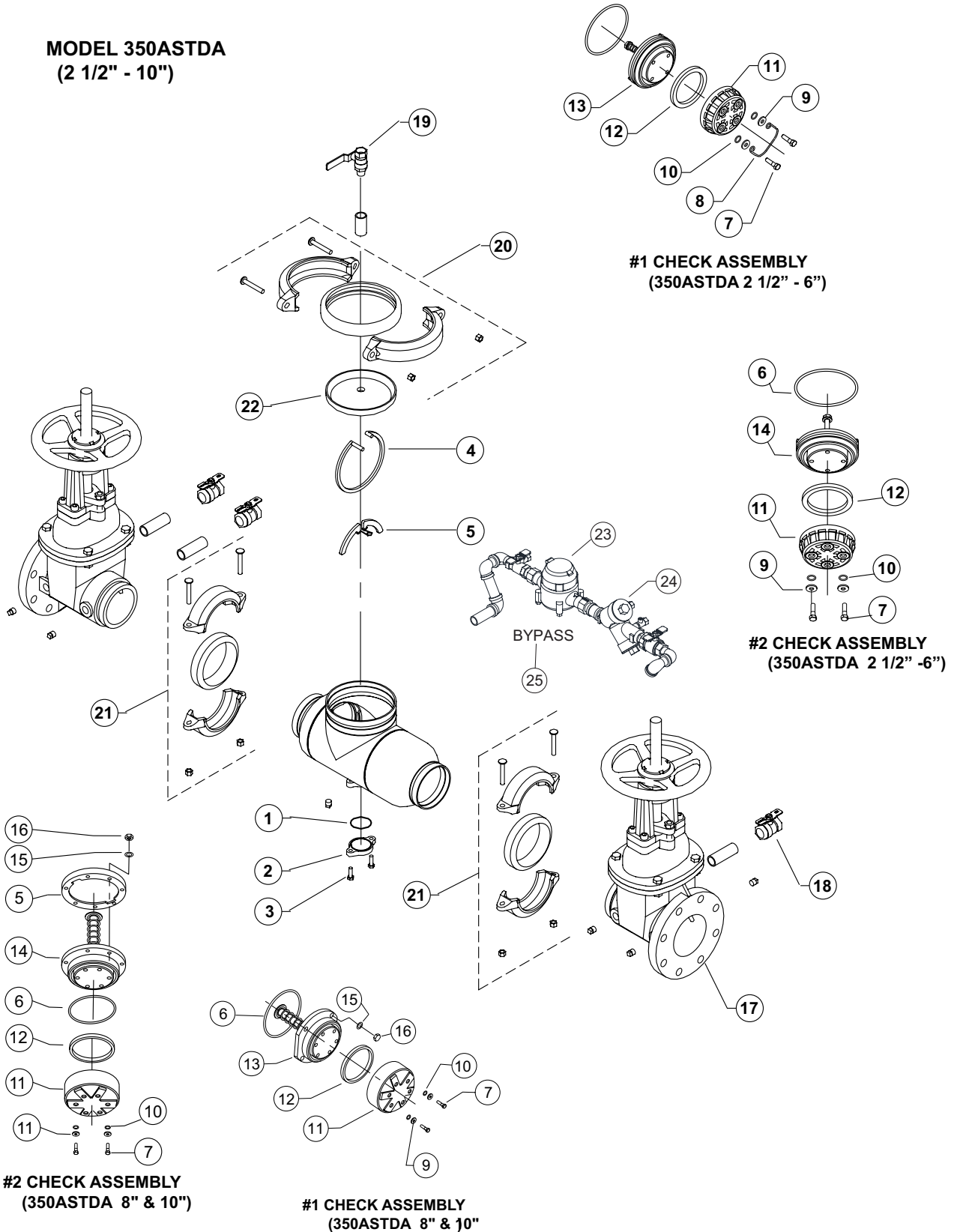
MODEL 350ASTDA

Stainless Steel Double Check Detector Assembly – Backflow Preventers 2-1/2" to 10"

Parts Drawing



MODEL 350ASTDA
(2 1/2" - 10")



#1 CHECK ASSEMBLY
(350ASTDA 2 1/2" - 6")

#2 CHECK ASSEMBLY
(350ASTDA 2 1/2" - 6")

#2 CHECK ASSEMBLY
(350ASTDA 8" & 10")

#1 CHECK ASSEMBLY
(350ASTDA 8" & 10")