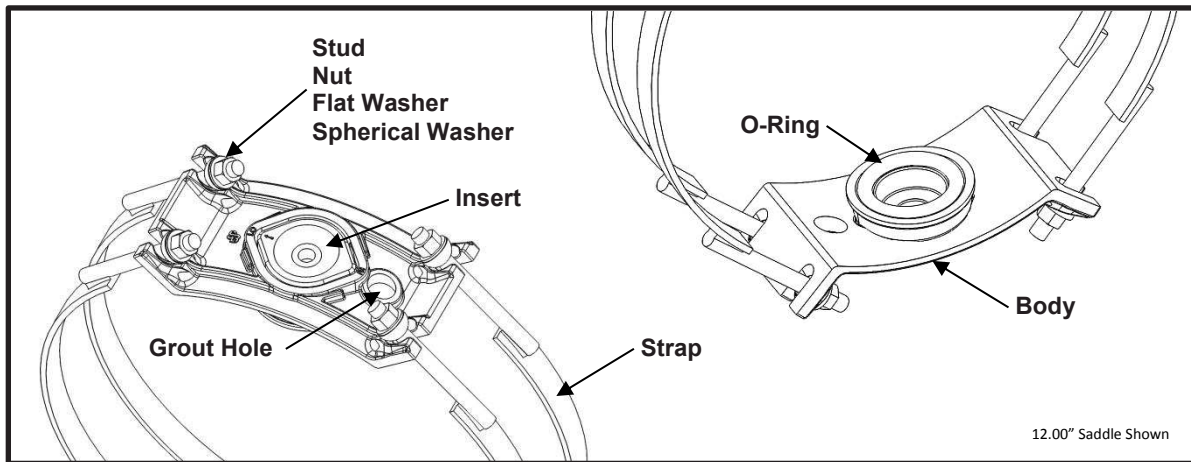


SPECIFICATION

SERVICE SADDLE DOUBLE STRAP

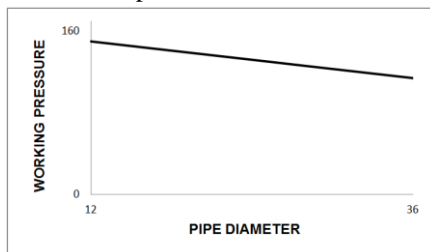
MODEL 362



APPLICATIONS

- **Typical Uses**
 - Tapping branch connections on new or existing concrete steel cylinder pipe
 - Installing air/vacuum valves, pitot tubes, drain valves, or other miscellaneous service equipment
 - Installing pipe supports, hangers, or sign mounting brackets
- **Standard Pipe Sizes**
 - 12" to 36" nominal
- **Standard Taps**
 - NPT: 1/2", 3/4", 1", 1-1/4", 1-1/2", 2"
 - CC/AWWA: 1/2", 5/8", 3/4", 1", 1-1/4", 1-1/2", 2"
 - BSP: 1/2", 3/4", 1", 1-1/4", 1-1/2", 2"

See Smith-Blair catalog for available pipe diameter and tap size combinations as some combinations are not available
- **Type of Pipe**
 - Concrete Steel Cylinder
- **Working Pressure**
 - Up to 150 psi depending on type of pipe, type of repair, pipe diameter, service conditions, and installation workmanship





SPECIFICATION

SERVICE SADDLE DOUBLE STRAP

MODEL 362

MATERIALS

- **Body**
 - Cast using Ductile Iron 65-45-12 per ASTM A536
 - Flexi-Coat® fusion bonded epoxy finish which meets application methods AWWA C213
 - Open ears provide easy slip on installation and the removal of nuts is not required thus preventing lost hardware
 - Canted ears for maximum tangential tightening of strap
 - Wide skirt and heavy tapping boss provides excellent stability on the pipe
 - Grout opening provided in the saddle body for restoring the concrete coating after the tap is completed
- **Insert**
 - Cast using Ductile Iron 65-45-12 per ASTM A536
 - Flexi-Coat® fusion bonded epoxy finish which meets application methods AWWA C213
 - Unique Twist-Lock taped insert can accommodate up to 1-1/2" variation in the thickness of the concrete coating
 - Tap threads are full and free from shear conforming to AWWA standards
- **O-Ring**
 - Nitrile (Buna-N) per ASTM D2000
 - Certified to NSF/ANSI 61-G & 372
 - Compounded to resist water, oil, natural gas, acids, alkalies, most (aliphatic) hydrocarbon fluids, and many other chemicals
 - Temperature range: -20°F to +180°F
 - O-ring is fully cemented in a cavity to hold it in place
- **Strap**
 - Carbon Steel per ASTM A36
 - Formed using 0.25" x 1.25" flat bar
 - Flexi-Coat® fusion bonded epoxy finish which meets application methods AWWA C213
 - Provides continuous circumferential support of the pipe for better performance in the tapped area (nearly 360°)
- **Stud**
 - HSLA Carbon Steel per AWWA C111/A21.11
 - 5/8"-11UNC x 7.00" long, Stud welded to Strap
 - Rolled threads for improved physical characteristics, greater thread accuracy, and smooth surface finish
- **Welding**
 - Welds accomplished using qualified welders
 - GMAW weld process utilized
- **Nut**
 - HSLA Carbon Steel per AWWA C111/A21.11
 - 5/8"-11UNC, Heavy Hex Semi-Finished
- **Flat Washer**
 - Carbon Steel per ASTM F844
 - 5/8" Type A Plain
 - Utilized to preserve corrosion resistance of epoxy coated surfaces and increase bearing surface
- **Spherical Washer**
 - Cast using Ductile Iron 65-45-12 per ASTM A536
 - Flexi-Coat® fusion bonded epoxy finish which meets application methods AWWA C213
 - Provide full bearing for the strap nuts and align the straps with the saddle body
 - Distributes load for better performance



SPECIFICATION

SERVICE SADDLE DOUBLE STRAP

MODEL 362

LISTINGS

- Certified to NSF/ANSI 61-G & 372

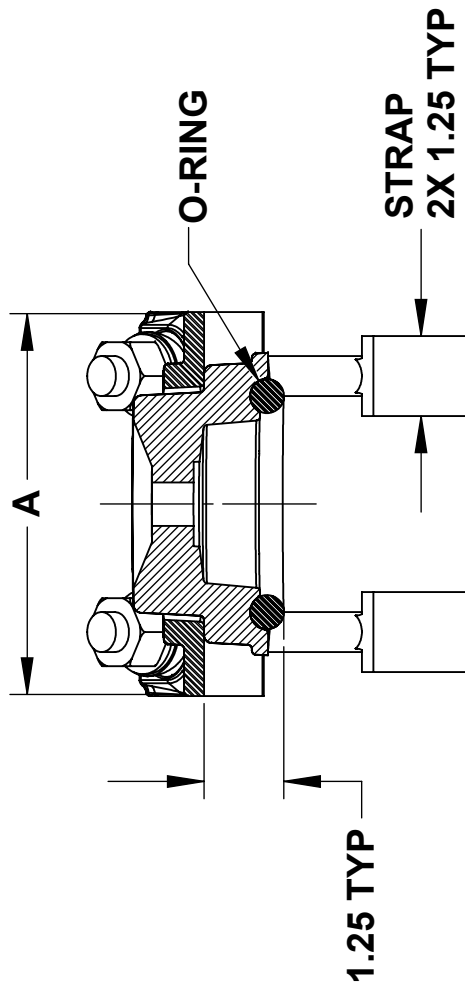
OPTIONS

- Type 304 Stainless Steel strap, stud, flat washer and fluoropolymer coated nuts to prevent galling
- Type 316 Stainless Steel strap, stud, flat washer and fluoropolymer coated nuts to prevent galling
- Alternative gasket material (e.g. Viton, EPDM, etc.)
- Anode connector

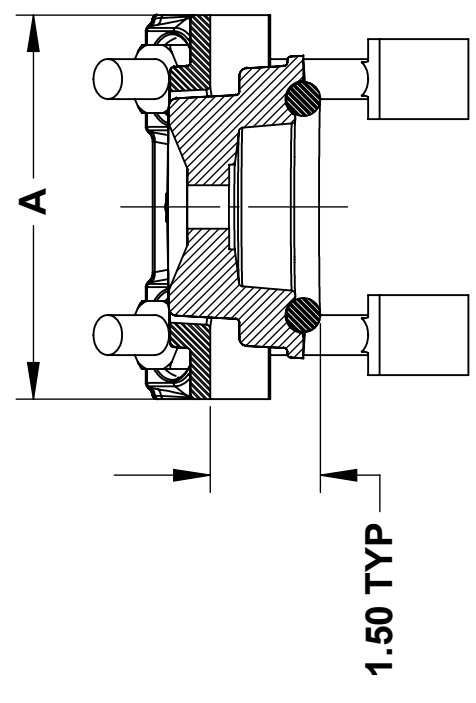
NOTES

- These product specifications were correct at the time of publication and are subject to change without notice
- Flexi-Coat® is a registered trademark of Smith-Blair, Inc.
- See the Smith-Blair® web site for part numbers and ordering information
- See the Smith-Blair® web site for warranty information
- See the Smith-Blair® web site for corrosion warnings

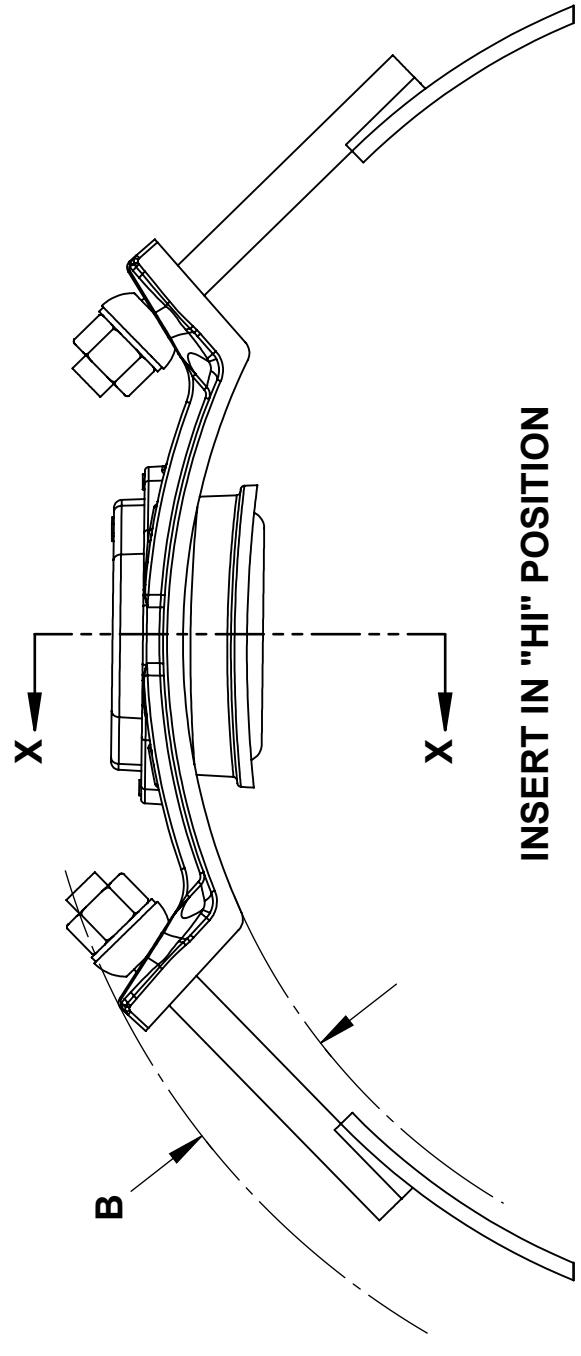
30 Globe Ave, Texarkana, AR 71854
Ph: 870-773-5127 • Fax: 870-773-5212
Toll-Free Numbers: Ph: 800-643-9705 • Fax: 800-648-6792



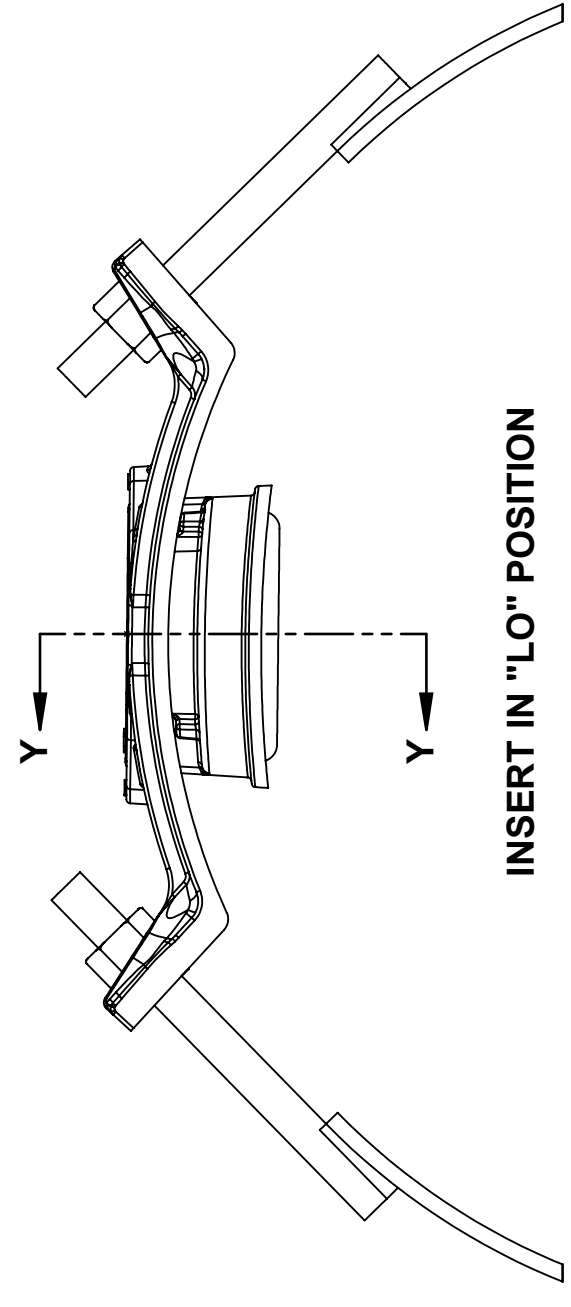
SECTION X-X



SECTION Y-Y



INSERT IN "HI" POSITION



INSERT IN "LO" POSITION

NOMINAL SIZE	STEEL CYL. O.D.	APPROX. WT. (LB)	A	B	SOCKET SIZE
12	13-3/8	23	6.25	2.50	1-1/16"
14	15-1/4	24			
16	17-3/8	26			
18	19	26	7.50	2.81	1-1/16"
20	21	31			
21	22	31			
24	25-3/4	33			
27	28	35			
30	31-7/8	36			
33	34-7/8	38			
36	37-7/8	40			

- NOTES:**
- SEE SMITH-BLAIR CATALOG FOR AVAILABLE PIPE DIAMETER AND TAP SIZE COMBINATIONS AS SOME COMBINATIONS ARE NOT AVAILABLE
 - 12" NOMINAL SADDLE SHOWN OTHER SIZES SIMILAR
 - STANDARD TAP SIZES 1/2" THRU 2"
 - GROUT HOLE PROVIDED 1.12" TYPICAL O.D.

CERTIFIED TO NSF/ANSI 61-G & 372

TOLERANCES U.N.O. XX= ±.03 XXX= ±.015 FRACTIONS= * ANGLES= ±1° MACH. FIN.	NOTES: REMOVE BURRS AND SHARP EDGES DO NOT SCALE DWG.	APP'D	DATE
ALL DIMENSIONS ARE IN INCHES.	SCALE: N/A	CK'D	DATE
		DRN	DATE
		CHD	DATE

TITLE
SPECIFICATION
SERVICE SADDLE DOUBLE STRAP
MODEL 362

SMITH-BLAIR, Inc. TEXARKANA, ARKANSAS	P/N	N/A
	DWG. NO.	SPEC_362.DRW