

SUPPLY

DRAINAGE

SUPPORT

APPENDIX

Halo™ Drain

Adjustable Floor Drain with Deck Flange Sch. 40 Hub Connection

- Outlet welds over 2" and inside 3", or over 3" and inside 4"
- Head adjusts up to 3/4" above flush to accommodate most flooring types
- Finish Line™ models are adjustable AFTER the pour
- Installs easily in cored concrete floors or corrugated decks
- Great for loft remodels, second floor utility rooms/laundry rooms, etc.



822-3PNR



822-MF3PNR

NEW

Options: Add letter after dash in item number. Add prices to list.
M Clamping collar kit \$15.00

Options: Add letter suffix. Add price to list.
V Vandal-resistant screws \$5.00
B Complies with Buy American Act ¹ \$47.50
E Extended ring ¹ \$60.00

¹ Only available for round nickel bronze ring and strainer.



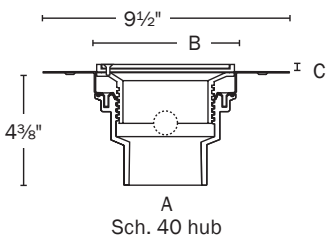
832-S3



822-EX3



863-FA



PVC Item No	ABS Item No	Ring & Strainer	Dimensions			Pkg	Min Qty	Case Qty
			A	B	C			
HALO DRAIN								
822-2PNR	822-2ANR	Round nickel bronze	2" x 3"	5 1/2"	0" - 3/4"	B	1	4
822-2PSR	822-2ASR	Round 304 stainless	2" x 3"	5 1/2"	0" - 3/4"	B	1	4
822-2PS	822-2AS	Round 18-ga. stainless	2" x 3"	5 1/2"	0 - 1/2"	B	1	4
822-2PNQ	822-2ANQ	Square nickel bronze	2" x 3"	5 7/8"	5/16" - 3/4"	B	1	4
822-2PSQ	822-2ASQ	Square 304 stainless	2" x 3"	5 7/8"	5/16" - 3/4"	B	1	4
822-3PNR	822-3ANR	Round nickel bronze	3" x 4"	5 1/2"	0 - 3/4"	B	1	4
822-3PSR	822-3ASR	Round 304 stainless	3" x 4"	5 1/2"	0 - 3/4"	B	1	4
822-3PS	822-3AS	Round 18-ga. stainless	3" x 4"	5 1/2"	0 - 1/2"	B	1	4
822-3PNQ	822-3ANQ	Square nickel bronze	3" x 4"	5 7/8"	5/16" - 3/4"	B	1	4
822-3PSQ	822-3ASQ	Square 304 stainless	3" x 4"	5 7/8"	5/16" - 3/4"	B	1	4
FINISH LINE HALO ROUGH-IN DRAIN								
822-2PF	822-2AF	(Coring plug)	2" x 3"	—	1"	B	1	4
822-3PF	822-3AF	(Coring plug)	3" x 4"	—	1"	B	1	4
FINISH LINE HALO FINISH FIXTURE								
832-3HNR	—	Round nickel bronze	—	5 1/2"	1" - 2"	B	1	10
832-3HSR	—	Round 304 stainless	—	5 1/2"	1" - 2"	B	1	1
832-3HNQ	—	Square nickel bronze	—	5 7/8"	1" - 2"	B	1	10
832-3HSQ	—	Square 304 stainless	—	5 7/8"	1" - 2"	B	1	1
FINISH LINE HALO COMPLETE ASSEMBLY								
822-F2PNR	822-F2ANR	Round nickel bronze	2" x 3"	5 1/2"	1" - 2"	B*	1	1
822-F2PSR	822-F2ASR	Round 304 stainless	2" x 3"	5 1/2"	1" - 2"	B*	1	1
822-F2PNQ	822-F2ANQ	Square nickel bronze	2" x 3"	5 7/8"	1 5/16" - 2"	B*	1	1
822-F2PSQ	822-F2ASQ	Square 304 stainless	2" x 3"	5 7/8"	1 5/16" - 2"	B*	1	1
822-F3PNR	822-F3ANR	Round nickel bronze	3" x 4"	5 1/2"	1" - 2"	B*	1	1
822-F3PSR	822-F3ASR	Round 304 stainless	3" x 4"	5 1/2"	1" - 2"	B*	1	1
822-F3PNQ	822-F3ANQ	Square nickel bronze	3" x 4"	5 7/8"	1 5/16" - 2"	B*	1	1
822-F3PSQ	822-F3ASQ	Square 304 stainless	3" x 4"	5 7/8"	1 5/16" - 2"	B*	1	1
ACCESSORIES								
832-S3	Shim kit for Finish Line Halo: two shims, two 3/4" screws					B	1	10
863-FA	Round aluminum condensate funnel with screws					B	1	5
863-FN	Round ni-brnz condensate funnel with screws					B	1	5
822-EX3	Ductile iron extension nipple fits under Halo head or Finish Line coring sleeve					B	1	1
822-TB	Thread bushing for Halo head					B	1	1