

# TRENCH TOUGH PLUS™

## MOLDED PVC FITTINGS

### TRENCH TOUGH PLUS™

#### SDR35 GASKETED SEWER FITTINGS

- Ideal for use in wastewater, stormwater and industrial waste applications.
- Reinforced to SDR26 thickness at key locations such as the branches of tees and wyes for optimal long-term performance.
- Joint withstands 15 psi hydrostatic pressure and a -10.8 psi vacuum pressure.
- Leak-proof at 5° joint deflection and 5% ring deflection.

Injection  
Molded  
4" – 18"

Fabricated  
18" – 42"



### NEW MOLDED GASKETED SDR35 SEWER FITTINGS

Product	Size (inches)	Size (mm)	Old Part #	NEW Part #
45° WYE (GxGxG)	15 x 10	375 x 250	043317	143317
	15 x 12	375 x 300	043318	143318
	15	375	043310	143310
	18 x 4	450 x 100	043904	143904
	18 x 6	450 x 150	043903	143903
45° ELBOW (GxG)	15	375	043515	143515
45° ELBOW (SxG)	15	375	043951	143951
REPAIR COUPLING WITHOUT PIPE STOP (GxG)	12	300	043631	143631
EXTENDED BUSHING (SxG) - Concentric	12 x 4	300 x 100	043697	143697
	12 x 6	300 x 150	043617	143617
	12 x 8	300 x 200	043616	143616
	12 x 10	300 x 250	043623	143623
INCREASER COUPLING (GxG)	12 x 4	300 x 100	043798	143798
	12 x 6	300 x 150	043530	143530
	12 x 8	300 x 200	043532	143532
	12 x 10	300 x 250	043520	143520

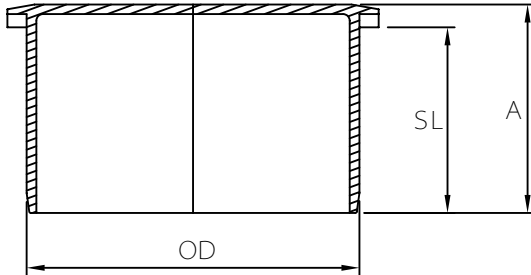


MULTI FITTINGS

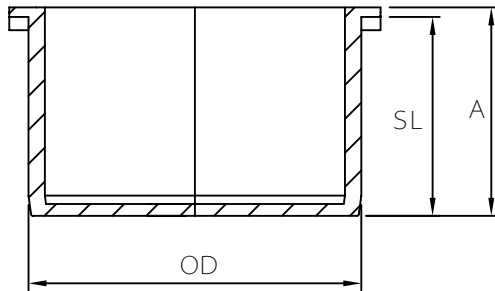
# LAYING LENGTH

ISSUE DATE: OCT 30/17  
SUPERCEDES: MAR 11/05

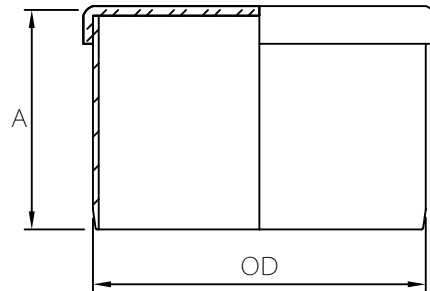
## SPIGOT PLUG



4", 6", 8"



10", 12"



FABRICATED FITTING (F)

## INJECTION MOLDED FITTING (M)

	SIZE	PART NUMBER	A REF	SL REF	OD
M	4	063734	3.125	2.875	4.215
M	6	043736	3.875	3.750	6.275
M	8	043738	5.500	4.000	8.400
M	10	043740	5.750	5.500	10.500
M	12	043741	6.875	6.500	12.500
F	15	043742	13.000	-	15.300
F	18	043743	18.000	-	18.701
F	21	043744	18.000	-	22.047
F	24	043745	18.250	-	24.803
++F	27	043751	24.000	-	27.953

Note: ++ FRP Reinforced