

TECHNICAL SPECIFICATIONS

KDS 3448

MODEL NUMBER 142030

DIMENSIONS: 47 7/8" x 33 5/8" x 80 1/8" Gelcoat



STANDARD FEATURES

- Four-piece gelcoated fiberglass shower with PIN system for easy front installation
- Large top corner shelves, wide soap dish and standard acrylic handle (opt. metallic finishes)
- Optional unique features: Reinforced walls and grab bars
- Product also available in Above-the-Floor Rough
- Right/left-hand seat or no seat
- Center drain
- Textured floor

UNIQUE FEATURES

- PIN system

OPTIONS

- Shower base only KDS 3448 with pin system
- Side walls (right and left) for KDS 3448 & 3460
- Back wall for KDS 3448
- Wall reinforcement (one wall)
- 18" Modern straight grab bar
- 24" Modern straight grab bar

SYSTEMS

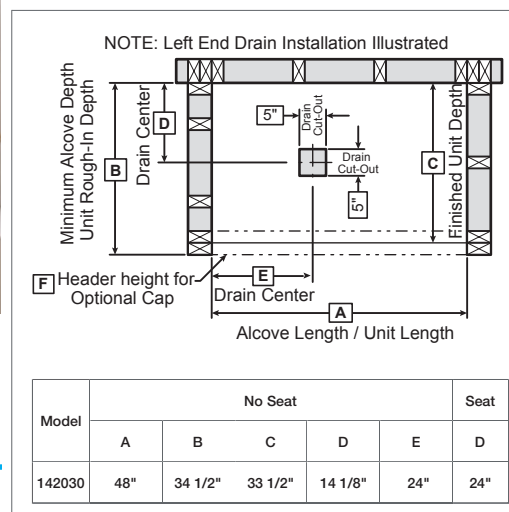
- None

DOOR SELECTION

Combine with AKER's complete shower door offering visit www.akerbymax.com

CERTIFICATIONS

AKER products adhere to one or more of the following certifications:



Project :
 Contractor :
 AKER Representative : Tel :
 Date :

www.akerbymax.com

2017-09-05

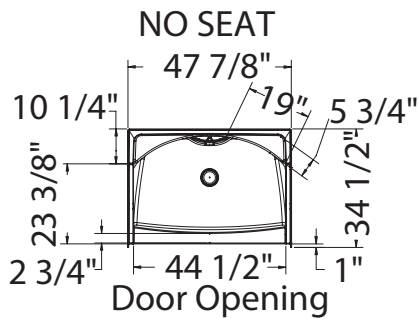
TECHNICAL SPECIFICATIONS

KDS 3448

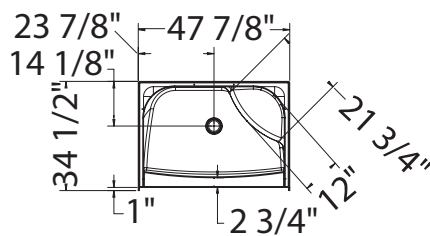
MODEL NUMBER 142030

TECHNICAL DRAWINGS

STANDARD

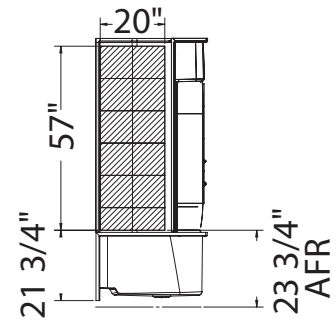


RIGHT SEAT SHOWN LEFT SEAT SYMMETRICAL

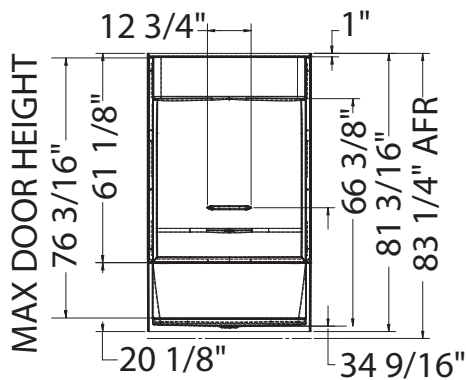
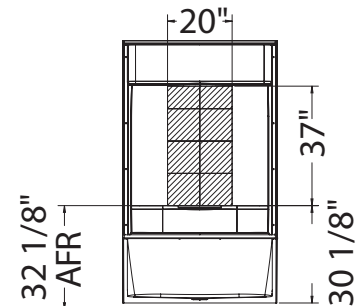


REINFORCEMENT BACKING

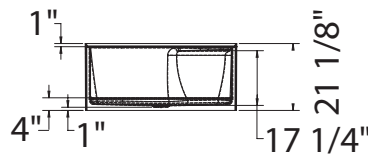
OPTION 20212-L Shown
OPTION 20212-R Symetrical



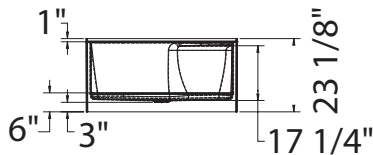
OPTION 20212-B



NOT ABOVE-THE-FLOOR

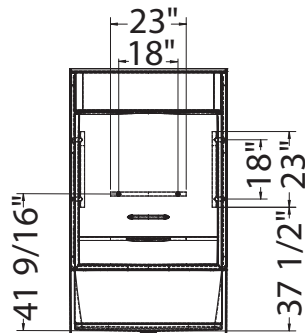


ABOVE-THE-FLOOR

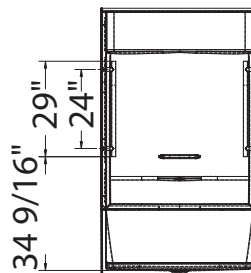


GRAB BARS

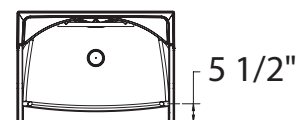
OPTION 20203



OPTION 20204



OPTION 20203-20204



All dimensions are approximate. Structure measurements must be verified against the unit to ensure proper fit.

2017-09-05