

TO-4260 AFR alcove bathtub

Model number:

141355

Dimensions: 60" x 41" x 18"

Installation: Alcove

Material: AcryIX™



Standard Features:

- Meets FHA accessibility requirements
- Integrated tiling flange
- 2 7/8 in. Above-the-Floor Rough included
- 14 1/4 in. deep sump
- Bottom bathing well : 48 in. L x 26 1/2 in. W
- Textured floor
- Right or left drain
- Alcove installation

Product characteristics:

- Textured Floor
- Integrated Tiling Flange and Skirt
- Above-the-Floor Rough (AFR)

Warranty:

Lifetime limited

Standard colors:



White (002)



Bone (004)



Biscuit (007)

Certifications

MAAX products adhere to one or more of the following certifications:



TO-4260 AFR alcove bathtub

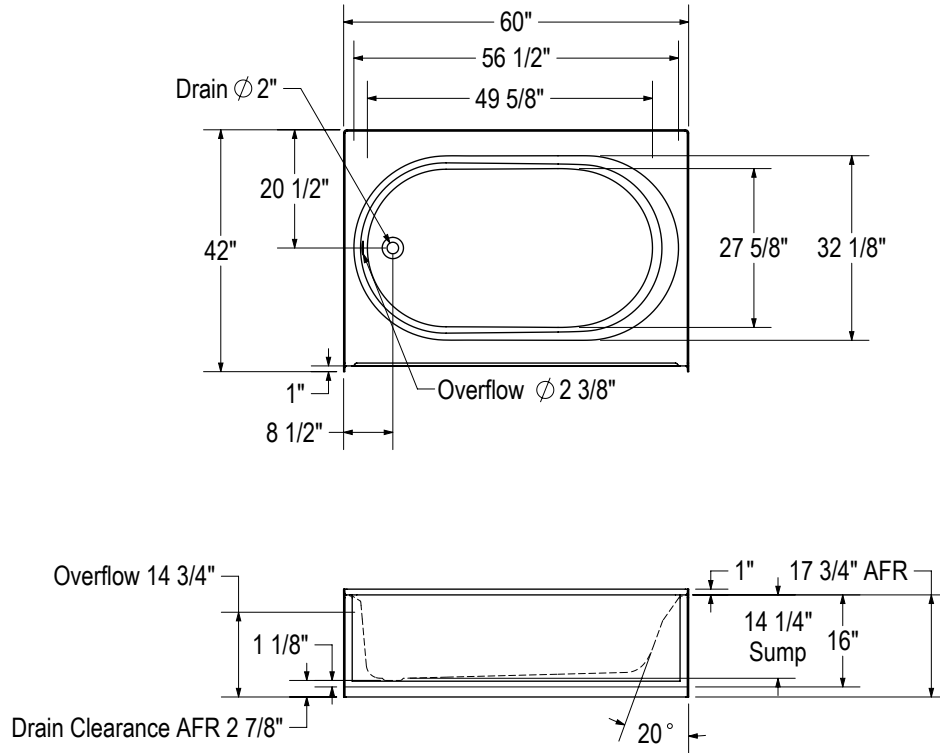
Model number:

141355

Dimensions: 60" x 41" x 18"

Installation: Alcove

Material: AcrylX™



All dimensions are approximate. Structure measurements must be verified against the unit to ensure proper fit.

Dimensions:

60 x 41 x 17 3/4 in.
(1524 x 1041 x 451 mm)

Water capacity:

69 gallons - 263 liters

Weight:

76 lbs - 34 kg

Bathing well:

48 X 26 1/2 in.
(1219 X 673 mm)

Deep sump height:

14 1/2 in. - 368 mm

Deck width:

3 3/4 in. - 95 mm

Drain location:

Left

Right

Project:

Contractor:

Representative:

Date:

Tel:

Notes: