

## TECHNICAL SPECIFICATIONS



# OPS-6036-RS - with ADA/ANSI Grab Bar and Seat

**MODEL NUMBER 141339**

DIMENSIONS: 60" x 36" x 76 5/8" Gelcoat



### STANDARD FEATURES

- 1-piece roll-in shower reinforced according to FHA accessibility requirements
- One horizontal L-shaped grab bar (33" x 37") and one L-shaped fold up phenolic white seat
- Center drain
- Textured bottom
- 3/4" reduced skirt and 1/2" high threshold

### UNIQUE FEATURES

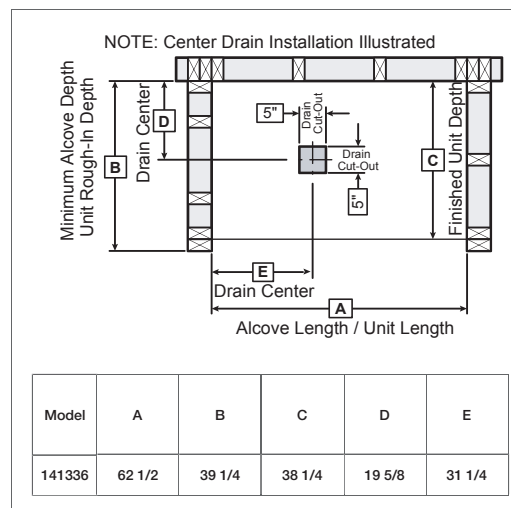
- None

### OPTIONS

- 72 in. White vinyl shower curtain with Stainless Steel hooks
- Chrome recessed soap dish (drilled, not installed)
- Solid Brass drain with Chrome plated Stainless Steel grid
- 60" Curtain rod

### SYSTEMS

- None



Project : \_\_\_\_\_  
 Contractor : \_\_\_\_\_  
 AKER Representative : \_\_\_\_\_ Tel : \_\_\_\_\_  
 Date : \_\_\_\_\_

### CERTIFICATIONS

AKER products adhere to one or more of the following certifications:



## TECHNICAL SPECIFICATIONS

# OPS-6036-RS - with ADA/ANSI Grab Bar and Seat

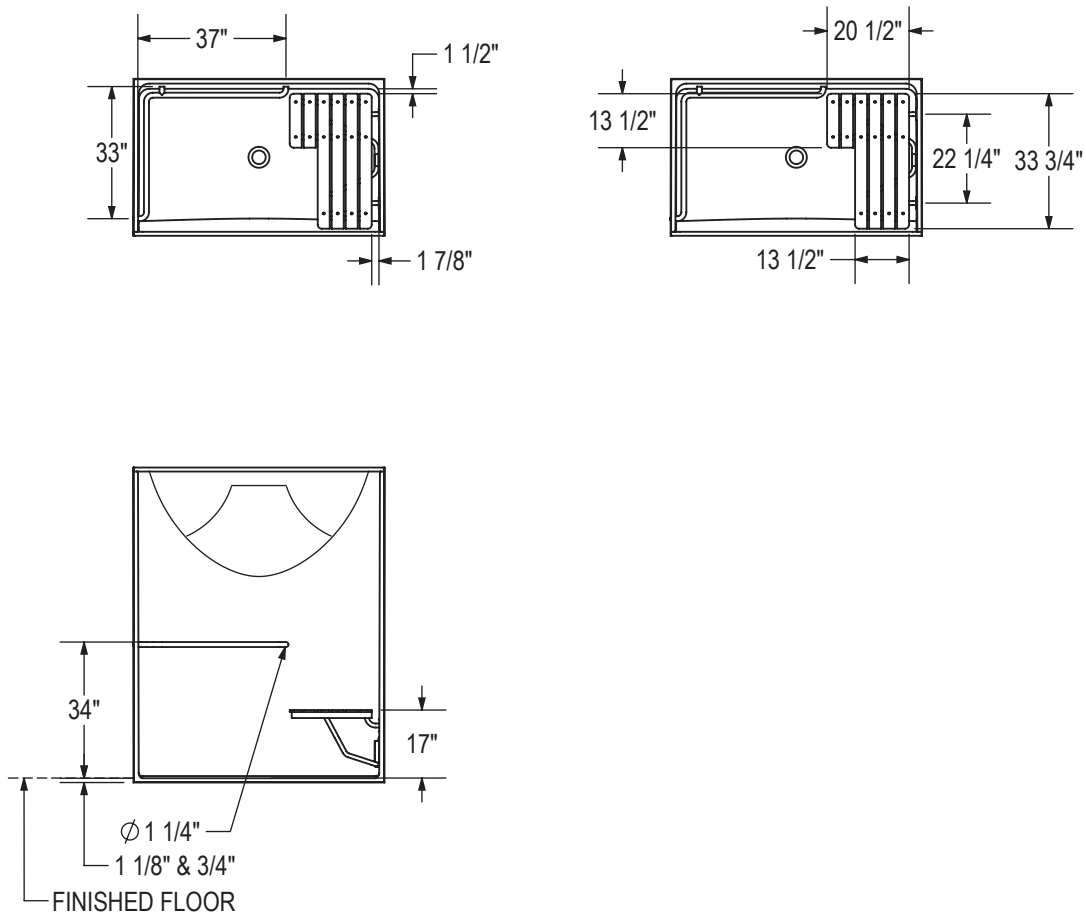
MODEL NUMBER 141339

## TECHNICAL DRAWINGS

BASE MODEL WITH ADA/ANSI L-SHAPED GRAB BAR & SEAT PACKAGE

LEFT SIDE SHOWN

RIGHT SIDE SYMMETRICAL



All dimensions are approximate. Structure measurements must be verified against the unit to ensure proper fit.

2017-09-05