



# Z5646-BWL

TAG \_\_\_\_\_

## HET Elongated, ADA Height, Floor Mounted Back Outlet with Bed Pan Lugs, EcoVantage® Flush Valve Toilet with ZurnSHIELD™ Glaze



### Z5645 Series

#### Recommended Trim:

- ☐ **Z5955SS-EL** Elongated, standard white, open front toilet seat less cover with stainless steel check hinge.

**Note:** To ensure system performance:  
Minimum Running Water Pressure = 25 psi.

*These dimensions and specifications are subject to change without notice.*

*Fixture dimensions meet ANSI/ASME standard A112.19.2 and CAN/CSA B45 requirements.*

*Meets the American Disabilities Guidelines and ANSI A117.1 requirements.*



Architectural/Engineering Approval

ZURN INDUSTRIES, LLC. ♦ COMMERCIAL BRASS OPERATION  
5900 ELWIN BUCHANAN DRIVE ♦ SANFORD NC 27330  
Phone: 1-800-997-3876 ♦ Fax: 919-775-3541  
www.zurn.com  
In Canada: ZURN INDUSTRIES LIMITED  
3544 Nashua Drive ♦ Mississauga, Ontario L4V1L2  
Phone: 905-405-8272 Fax: 905-405-1292

### Z5646 HET Series

- Zurn High Efficiency Toilets and paired performance flush valve systems are designed to exceed industry standards, while using as little as 1.1 gallons of water per flush.
- Universal high efficiency toilet can be specified with 1.28 gpf [4.8 lpf], 1.6 gpf [6.0 lpf] or dual flush valves.
- Vitreous china
- ZurnSHIELD™ ceramic glaze creates a permanent surface that protects the fixture by inhibiting the growth of stain and odor causing mold mildew and bacteria, thus reducing the amount of time, chemicals and water to clean the bowl.
- 4-1/8" Back Outlet Rough-in
- Elongated front rim
- ADA Compliant rim height
- 2-1/8" fully glazed trapway
- High efficiency siphon jet flush action
- Includes bolt caps
- Shipping Weight: 65 lbs.

### Engineering Specification:

#### Recommended Trim:

#### ☐ **Z5646-BWL with Bedpan Lugs**

Vitreous china, 1.1 gpf [4.16 lpf] or greater, high efficiency toilet with siphon jet flushing action, ZurnSHIELD™ ceramic glaze, elongated front rim, with integral bedpan lugs, and 1-1/2" top spud. Universal high efficiency toilet is designed to exceed industry standards with flush volumes of 1.1 gallons per flush or higher.

\*Replaces Zurn Z5641

See Zurn One Systems for suggested packages.

The information contained in this document is subject to change without notice.  
Please contact Zurn for most up to date information.

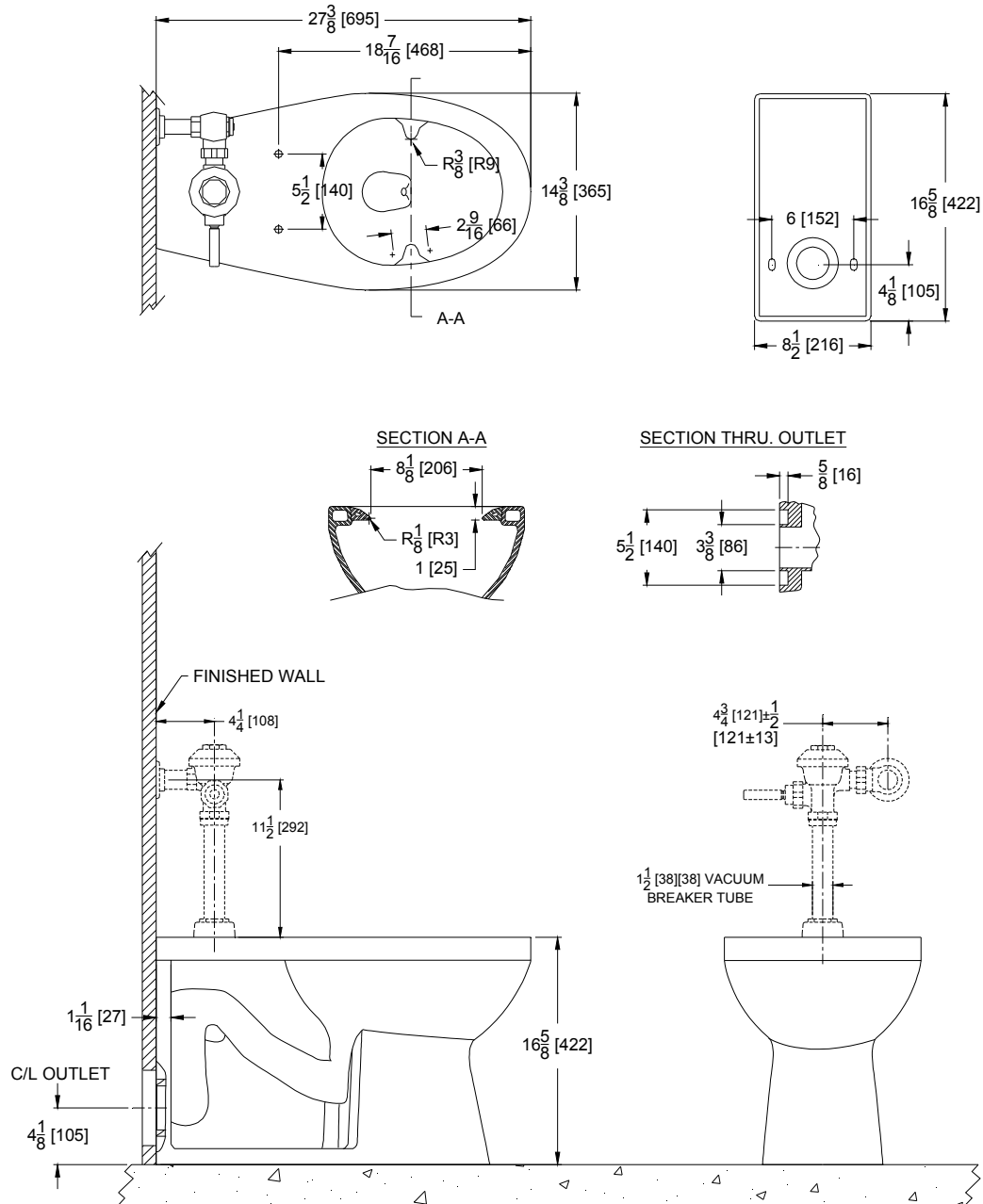


# Z5646-BWL

TAG \_\_\_\_\_

## HET Elongated, ADA Height, Floor Mounted Back Outlet with Bed Pan Lugs, EcoVantage® Flush Valve Toilet with ZurnSHIELD™ Glaze

Rough-in dimensions for Z5646 Series



*These dimensions and specifications are subject to change without notice.*

*Fixture dimensions meet ANSI/ASME standard A112.19.2 and CAN/CSA B45 requirements.*

*Meets the American Disabilities Guidelines and ANSI A117.1 requirements.*



ZURN INDUSTRIES, LLC. ♦ COMMERCIAL BRASS OPERATION  
5900 ELWIN BUCHANAN DRIVE ♦ SANFORD NC 27330  
Phone: 1-800-997-3876 ♦ Fax: 919-775-3541  
www.zurn.com  
In Canada: ZURN INDUSTRIES LIMITED  
3544 Nashua Drive ♦ Mississauga, Ontario L4V1L2  
Phone: 905-405-8272 Fax: 905-405-1292

EcoVantage® is a registered trademark of Zurn Industries, LLC.