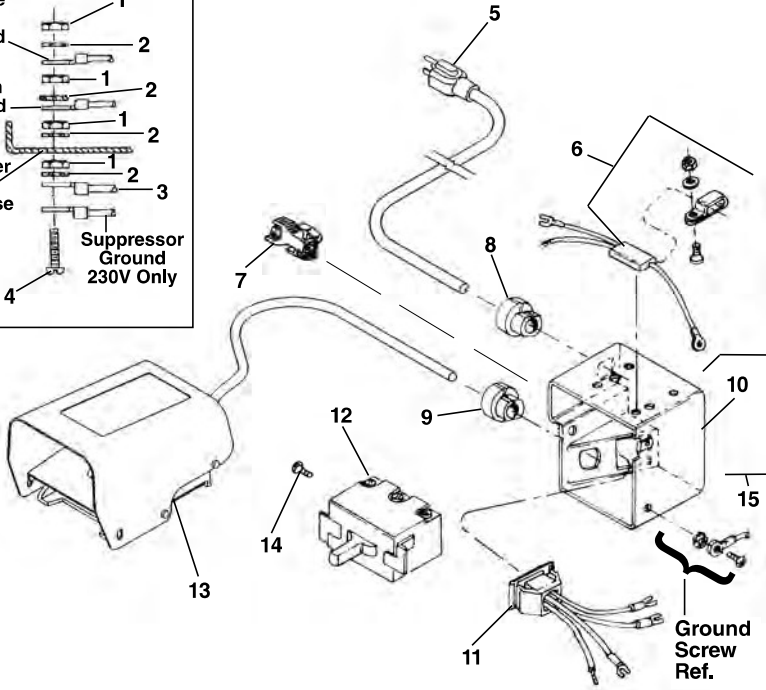
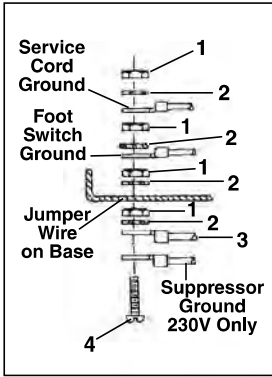


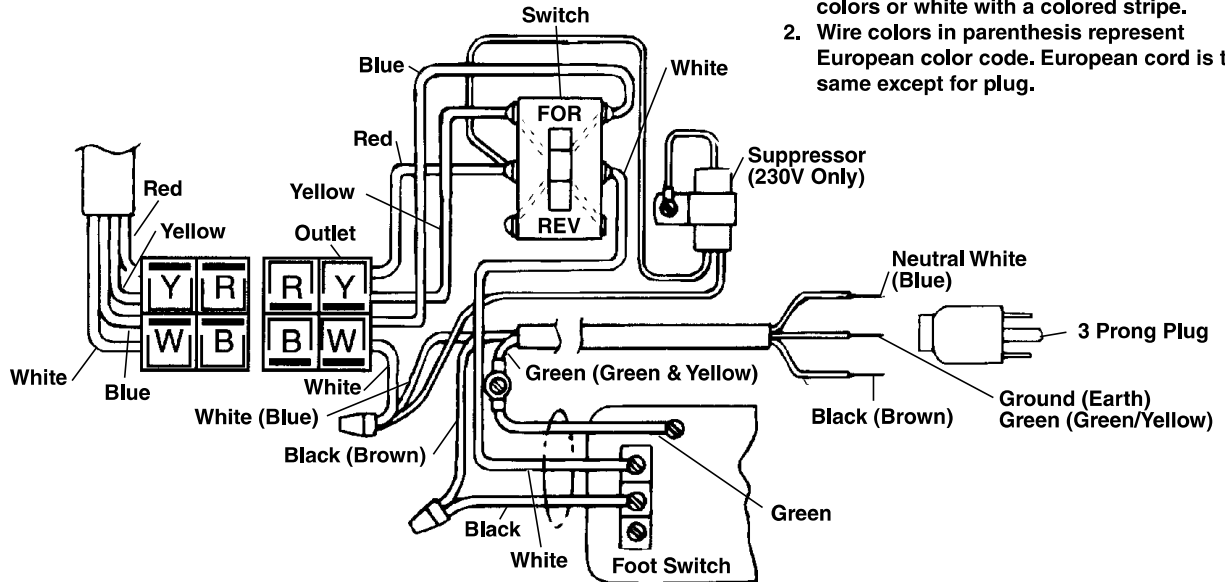
Electrical Components



NOTE: Order parts by Catalog Number only. DO NOT order by Reference Number.

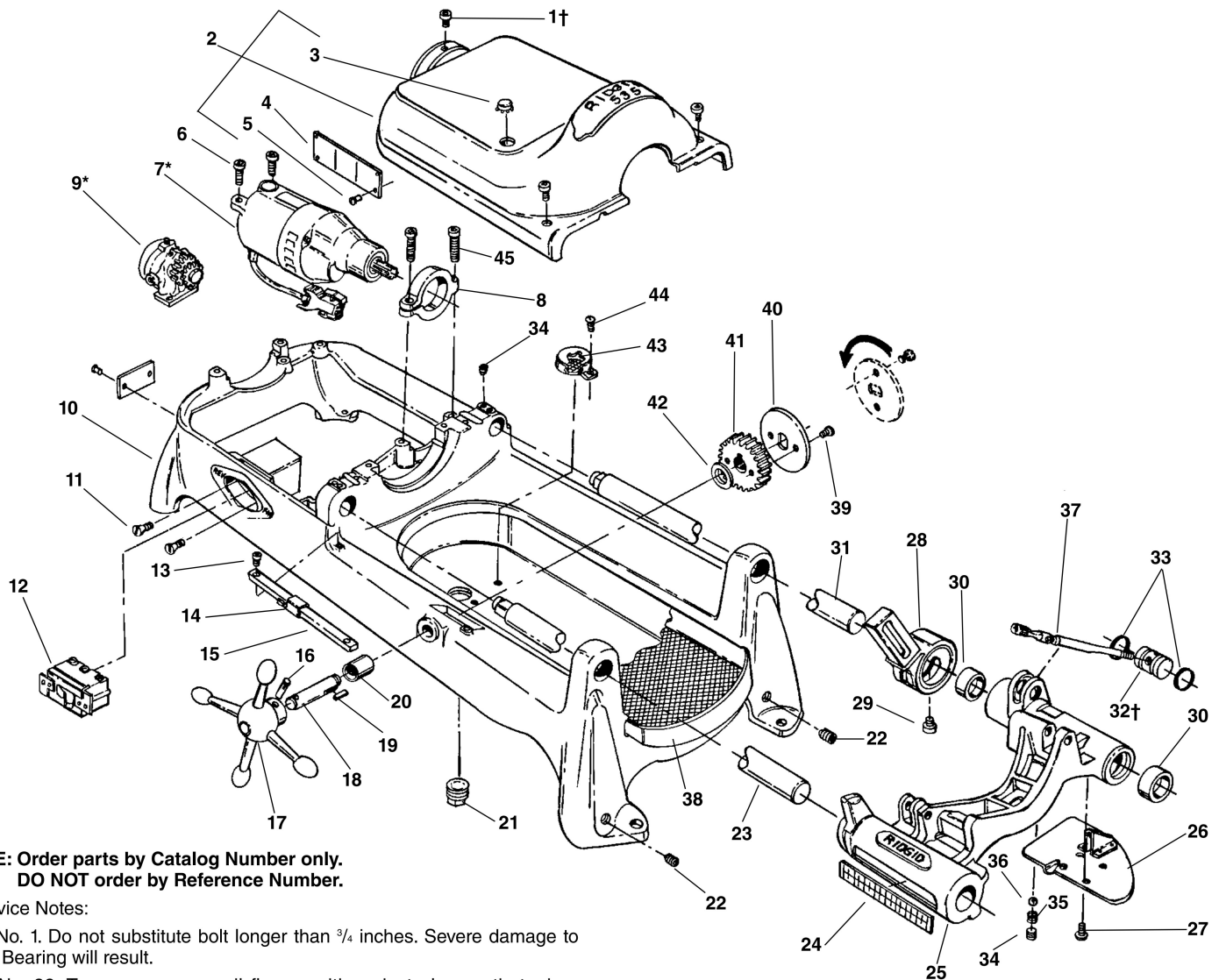
| Ref. No. | Catalog No. | Description |
|----------|-------------|---|
| 1 | 44695 | Hex Nut #10 - 24 (4) |
| 2 | 46985 | Ext. Tooth Washer #10 (4) |
| 3 | 85925 | Jumper Wire |
| 4 | 92455 | Screw #10 - 24 x 3/4" |
| 5 | 46740 | Power Cord w/Plug (115V) |
| | 46410 | Power Cord w/Plug (230V) |
| | 75045 | Power Cordless Plug (230V Europe/S. Africa) |
| 6 | 46320 | Suppressor Kit (230V Europe) |
| | 99170 | Suppressor (230V S. Africa) |
| 7 | 50552 | Plug |
| 8 | 46735 | Cord Grommet |
| | 46730 | Cord Grommet (230V Europe/S. Africa) |
| 9 | 46735 | Cord Grommet |
| 10 | 50612 | Switch Box |
| 11 | 50617 | Outlet Jumper Assembly |
| 12 | 44505 | Switch |
| 13 | 36642 | B-294 Foot Switch |
| 14 | 45405 | Screw |
| 15 | 91187 | Switch Box Kit (Includes Ref. Nos. 7-11) |

Wiring Diagram (115/230V)



1. Brush and Armature Leads may be solid colors or white with a colored stripe.
2. Wire colors in parenthesis represent European color code. European cord is the same except for plug.

Main Components – Early Style



**NOTE: Order parts by Catalog Number only.
DO NOT order by Reference Number.**

†Service Notes:

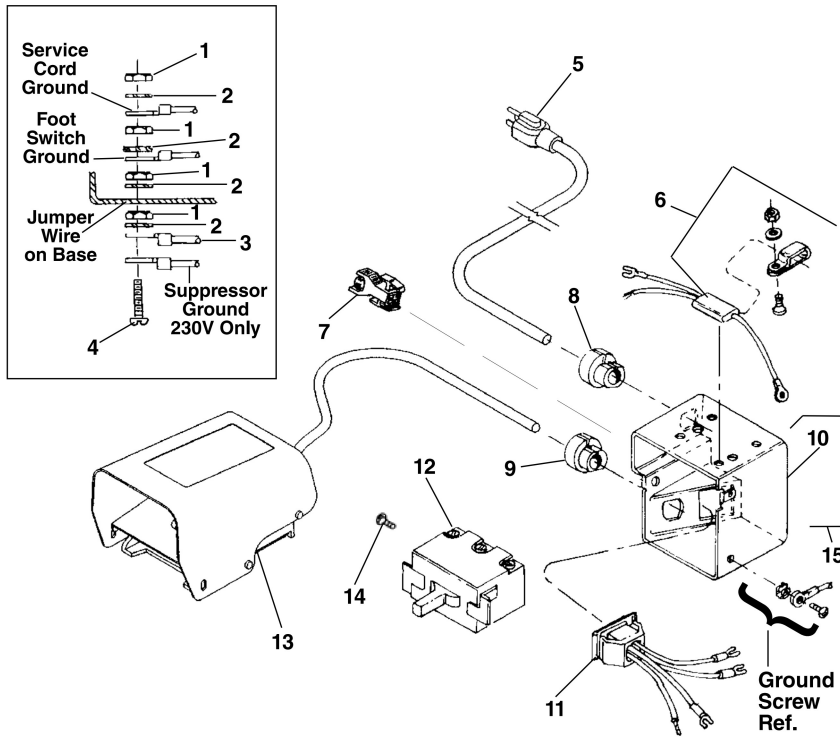
Ref. No. 1. Do not substitute bolt longer than $\frac{3}{4}$ inches. Severe damage to Rear Bearing will result.

Ref. No. 32. To assure proper oil flow, position pivot plug so that when spout is in up position, oil flow hole is visible in carriage slot below spout.

| Ref. No. | Catalog No. | Description | Ref. No. | Catalog No. | Description |
|----------|-------------|--|----------|-------------|--|
| 1† | 46760 | Screw $\frac{3}{8}$ " - 16 x $\frac{3}{4}$ " (3) | 24 | 46370 | Scale |
| 2 | 43190 | Cover (Incls. Ref. No. 3, 4, 5) | 25 | 62057 | Carriage Assy. (Includes Ref. Nos. 24, 26, 27, 28, 29, 30, 34, 35, 36) |
| 3 | 89310 | Plug Button | 26 | 45195 | Drip Plate |
| 4 | 88690 | Warning Plate | 27 | 46270 | Screw $\frac{1}{4}$ " - 20 x $\frac{1}{2}$ " Pan Head (4) |
| 5 | 85920 | Pop Rivet (8) | 28 | 43690 | Cutter Arm |
| 6 | 46745 | Screw $\frac{3}{8}$ " - 16 x $1\frac{1}{4}$ " (2) | 29 | 44930 | Screw, $\frac{5}{16}$ " x $\frac{9}{32}$ " |
| 7* | 88125 | Motor Model 1177, 115V | 30 | 46720 | Oil Seal (2) |
| | 88165 | Motor Model 2377, 230V | 31 | 45220 | Support Bar - Rear |
| 8 | 43795 | Motor Bracket | 32† | 44340 | Pivot Plug |
| 9* | 47195 | Model A Oil Pump | 33 | 44470 | O-Ring (2) |
| 10 | 43030 | Base (Incls. Ref. No. 20, 21, 22, 44) | 34 | 46800 | Set Screw $\frac{3}{8}$ " - 16 x $\frac{3}{8}$ " (3) |
| 11 | 45280 | Screw #8-32 x $\frac{5}{8}$ " Flat Head (2) | 35 | 46680 | Spring |
| 12 | 44505 | Switch | 36 | 46925 | Ball |
| 13 | 45615 | Screw #10-32 x $\frac{1}{2}$ " Flat Head (2) | 37 | 44495 | Oil Spout Assembly |
| 14 | 47110 | Indicator Slide | 38 | 43355 | Chip Tray |
| 15 | 47105 | Indicator Bar | 39 | 46785 | Screw #10-32 x $\frac{3}{8}$ " |
| 16 | 47165 | Pin | 40 | 47120 | Lock Plate |
| 17 | 46510 | Handwheel | 41 | 45430 | Pinion |
| 18 | 47115 | Pinion Shaft | 42 | 47145 | Spacer |
| 19 | 46930 | Key $\frac{3}{16}$ " Square | 43 | 46655 | Filter |
| 20 | 46540 | Bushing | 44 | 45420 | Screw #10-24 x $\frac{3}{8}$ " |
| 21 | 44485 | Drain Plug | 45 | 44220 | Screw $\frac{3}{8}$ " - 16 x $1\frac{1}{2}$ " |
| 22 | 42037 | Set Screw $\frac{1}{2}$ " - 13 x $\frac{1}{2}$ " (4) | | | |
| 23 | 45440 | Support Bar - Front | | | |

*Refer to Motor Model No./Refer to Model "A" Oil Pump for Component Parts

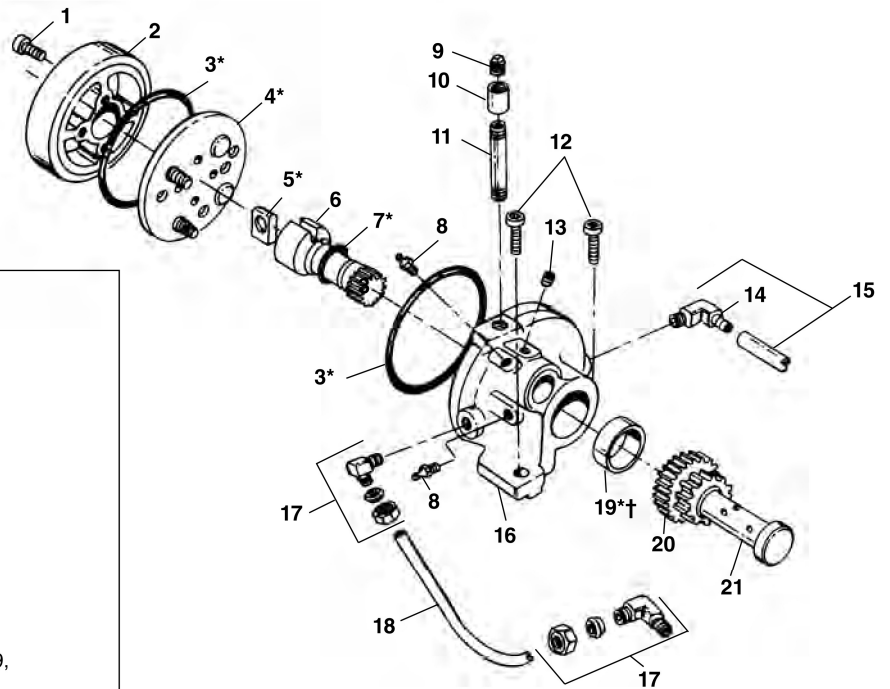
Electrical Components



NOTE: Order parts by Catalog Number only. DO NOT order by Reference Number.

| Ref. No. | Catalog No. | Description |
|----------|-------------|---|
| 1 | 44695 | Hex Nut #10 - 24 (4) |
| 2 | 46985 | Ext. Tooth Washer #10 (4) |
| 3 | 85925 | Jumper Wire |
| 4 | 92455 | Screw #10 - 24 x 3/4" |
| 5 | 46740 | Power Cord w/Plug (115V) |
| | 46410 | Power Cord w/Plug (230V) |
| | 75045 | Power Cordless Plug (230V Europe/S. Africa) |
| 6 | 46320 | Suppressor Kit (230V Europe) |
| | 99170 | Suppressor (230V S. Africa) |
| 7 | 50552 | Plug |
| 8 | 46735 | Cord Grommet |
| | 46730 | Cord Grommet (230V Europe/S. Africa) |
| 9 | 46735 | Cord Grommet |
| 10 | 50612 | Switch Box |
| 11 | 50617 | Outlet Jumper Assembly |
| 12 | 44505 | Switch |
| 13 | 36642 | B-294 Foot Switch |
| 14 | 44180 | Screw |
| 15 | 91187 | Switch Box Kit (Includes Ref. Nos. 7-11) |

Model "A" Pump



| Ref. No. | Catalog No. | Description |
|----------|-------------|---|
| 1 | 46770 | Screw #10-32 x 1" SHCS (4) |
| 2 | 46350 | Cover |
| 3* | 44650 | O-Ring (2) |
| 4* | 46645 | Valve Assembly |
| 5* | 47100 | Rotor Blade |
| 6 | 46355 | Pinion Shaft |
| 7* | 44645 | O-Ring |
| 8 | 46860 | Grease Fitting |
| 9 | 46815 | Pipe Plug |
| 10 | 89725 | Coupling |
| 11 | 89730 | Nipple |
| 12 | 46750 | Screw 3/8"-16 x 1" SHCS (2) |
| 13 | 44455 | Set Screw 5/16" x 3/8" |
| 14 | 87945 | 90° Fitting |
| 15 | 75065 | Intake Line |
| 16 | 43470 | Pump Body (Incls. Ref. Nos. 3, 8, 16, 19, Roller Bearing) |
| 17 | 46840 | 90° Fitting (2) |
| 18 | 44105 | Feed Line |
| 19*† | 46715 | Oil Seal |
| 20 | 44350 | Idler Gear |
| 21 | 44345 | Gear Shaft |
| — | 91055 | Repair Kit (Includes items marked with *) |

†Service Note: When replacing Oil Seal, open side should face towards outside of Pump Body. Use care in installing Seal so that lip is not damaged.