



PROLINE drain

by QUICKDRAIN USA 





NEWH
The Hospitality Industry Network



Awards:

KBIS – Gold Award and Best of Show

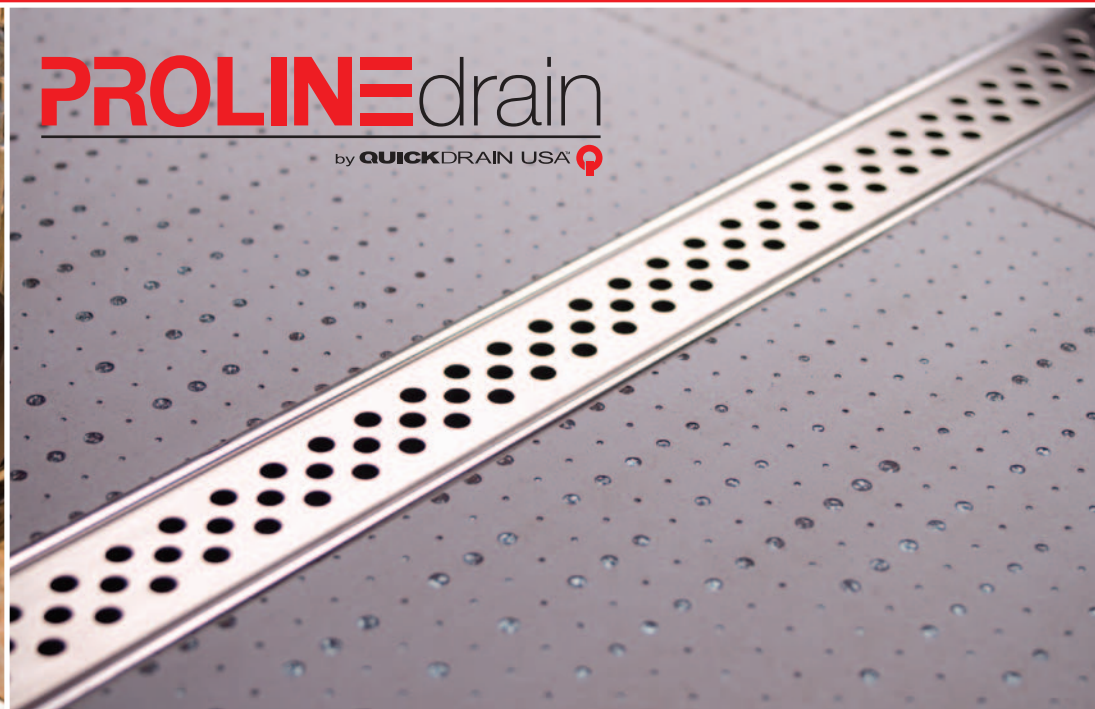
HD Expo 2009 and 2010 – Award of Excellence

Health Care Design Expo – Nightingale Award
and Best of Show

50+ Housing Council – Product Innovation



PROLINE drain
by **QUICKDRAIN USA** 



Contents

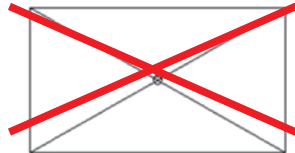
Introduction	2
Product Description	
– Standard Drains	3
– Custom Drains	
Irregular Size	6
Commercial Waste Outlet	6
Side Outlet	6
Resinous Flooring	6
Multiple Outlets	7
– Accessories	8
– Plumbing Code Listing and Approvals	9
Installations	
– Critical Installation Tips	10
– Drain Placement — Accessible Showers	11
– Drain Placement When Accessibility is Not Required	12
– Typical Installation Drawings	13
– Easy Order Guide	21

Introduction

The most limiting design factor in the whole bathroom is the traditional round drain in the center of a shower. This is due to its location, size and shape, but mainly the requirements it poses on the surroundings.

It does not need to be there!

The Old Romans figured it out 2000 years ago! The only way to drain a wet area with style, ease, efficiency and without design compromise is to slope one plane into one line!



Traditional shower pan



ProLine Drain installation

Channel drains are a logical choice of architects, designers and other forward thinking people who want to utilize all the advantages that the system provides.

Most of the advantages of the system revolve around the simple concept of a one-way slope in the shower pan!

The one-way slope in the wet area provides a uniform surface for design and installation of any material with any design.

The picture on the left shows a traditional drain in the center of shower pan, which creates a bowl-shaped surface with many limitations, such as the location of the drain in the center of the shower pan. This is exactly the place where most people stand! ProLine drains can be installed anywhere in or around the wet area. Please see below:

Standard Drain in Center



ProLine Drain at the Wall Installation



ProLine Drain at the Door Installation



The bowl shaped surface does not allow for the use of materials larger than 4" square, which is a huge design hurdle. A continuous one-way slope into a single line (ProLine drain) provides a perfect surface for the use of any size tiles, stone slabs and even solid surface material.

ProLine Drains can be used as a barrier for water on the floor to prevent it from running out into the areas where it is not welcome. To the right is an example of a threshold installation where the ProLine Drain protects the dry area from any leaks caused by faucets, showers, tubs or toilets.



Product Description

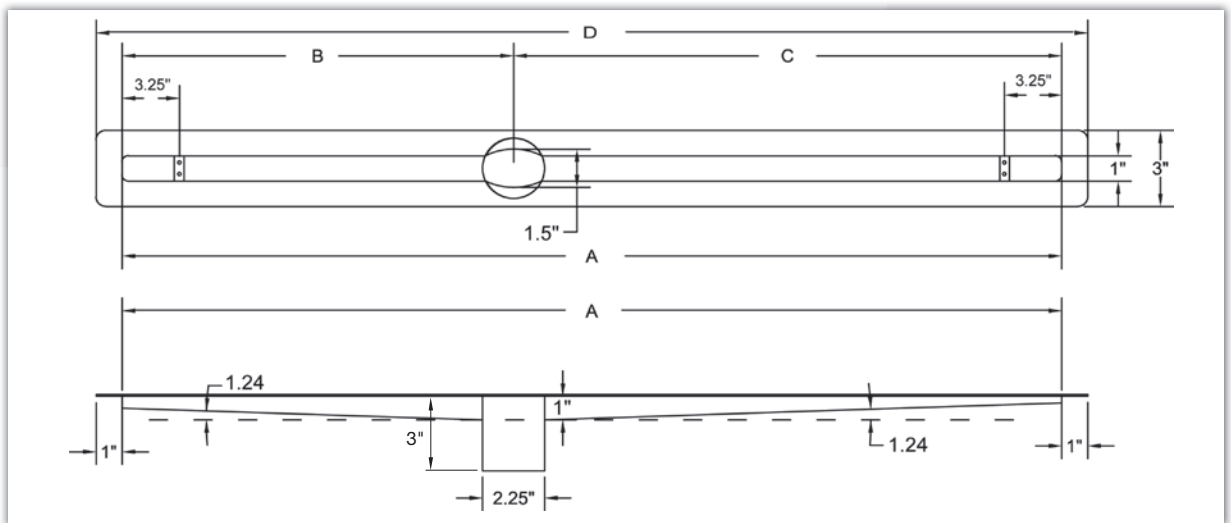
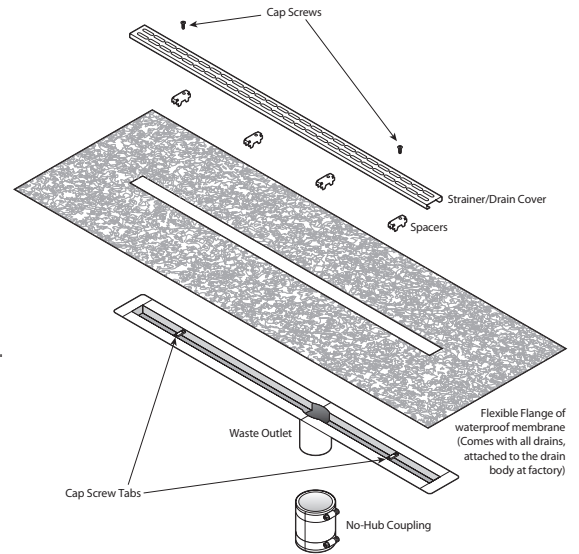
This system also allows for the design and construction of accessible showers that will not have to be recessed into the floor but simply raised above it, resulting in a great looking accessible shower without the expense. This is a perfect example of a Universal Design product.

In order to fully utilize all the advantages of ProLine Drain by QuickDrain USA, please follow the recommendations and the installation manual.

Standard Drains

Drain Body:

- Internally pitched (no water will be sitting in the trough after each use) channel drain body with horizontal flanges for waterproofing attachment. 2" waste down spout is used for an outlet. Outlet is located either in the center for 26", 27½", 46", 63" and 68" models or 3" off center for 30", 36", 40", 44", 48", 52" and 57-58" models.
- All drain bodies are made of 18 Gauge 316L Stainless Steel.
- Integral waterproofing is factory attached 6" around the whole perimeter of the trough.



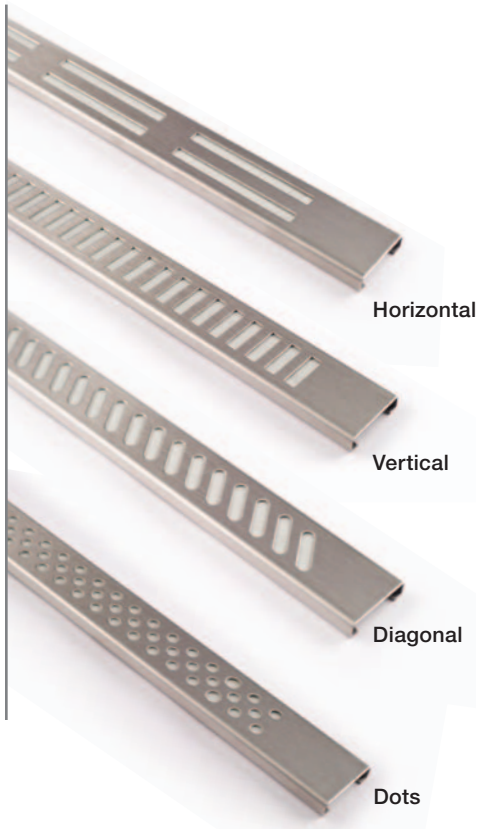
Standard sizes:

	Dimensions												Item Number – Dimensions											
	PLD26	PLD27-1/2	PLD30	PLD36	PLD40	PLD44	PLD46	PLD48	PLD52	PLD57-58	PLD63	PLD68												
A	26"	27½"	30"	36"	40"	44"	46"	48"	52"	57"	63"	68"												
B	13"	13¾"	12"	15"	17"	19"	23"	21"	23"	25½"	31½"	34"												
C	13"	13¾"	18"	21"	23"	25"	23"	27"	29"	31½"	31½"	34"												
D	28"	29¼"	32"	38"	42"	46"	48"	50"	54"	59"	65"	70"												

Product Description

Strainers:

- Strainer is removable with the use of simple Allen wrench. There are 6 choices of strainer patterns: Dots, Horizontal, Vertical, Waves, Diagonal and Tile-In (Hidden Drain).
- All strainers are made of 18 Gauge 304 Stainless Steel.
- Strainer is the slimmest width at 1-1/2".



Horizontal

Vertical

Diagonal

Dots



Waves

Tile-In
(Hidden Drain)

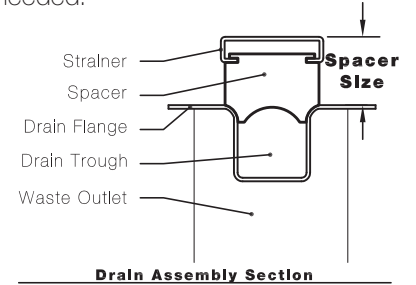
DESIGN/ LENGTH	ITEM NUMBER					
	HORIZONTAL	VERTICAL	DIAGONAL	WAVES	DOTS	TILEIN
28	HORIZONTAL28	VERTICAL28	DIAGONAL28	WAVES28	DOTS28	TILEIN28
30	HORIZONTAL30	VERTICAL30	DIAGONAL30	WAVES30	DOTS30	TILEIN30
36	HORIZONTAL36	VERTICAL36	DIAGONAL36	WAVES36	DOTS36	TILEIN36
40	HORIZONTAL40	VERTICAL40	DIAGONAL40	WAVES40	DOTS40	TILEIN40
44	HORIZONTAL44	VERTICAL44	DIAGONAL44	WAVES44	DOTS44	TILEIN44
46	HORIZONTAL46	VERTICAL46	DIAGONAL46	WAVES46	DOTS46	TILEIN46
48	HORIZONTAL48	VERTICAL48	DIAGONAL48	WAVES48	DOTS48	TILEIN48
52	HORIZONTAL52	VERTICAL52	DIAGONAL52	WAVES52	DOTS52	TILEIN52
58	HORIZONTAL58	VERTICAL58	DIAGONAL58	WAVES58	DOTS58	TILEIN58
63	HORIZONTAL63	VERTICAL63	DIAGONAL63	WAVES63	DOTS63	TILEIN63
68	HORIZONTAL68	VERTICAL68	DIAGONAL68	WAVES68	DOTS68	TILEIN68

Product Description

Spacers:

- Spacers are devices that are used to set the correct distance between the drain flange and the top of the drain strainer. This is the same distance as the space between the waterproofing and the top of the finished flooring material in the shower pan installation. The thickness of the strainer is included as the part of the space area.
- No spacers for 3/16" resinous flooring drain, special strainer and frame needed.

ITEM NUMBER	HEIGHT FROM DRAIN FLANGE TO TOP OF STRAINER
SP1/2	1/2"
SP5/8	5/8"
SP 3/4	3/4"
SP1	1"
SP1 1/2	1 1/2"
SP1 3/4	1 3/4"
SP2 1/2	2 1/2"



Number of Spacers Required for Drain Assemblies

DESIGN	STRAINER LENGTH										
	28	30	36	40	44	46	48	52	58	63	68
Tile-in	4	3	4	4	4	4	5	5	5	6	6
Waves	3	3	3	4	4	4	4	5	5	6	6
Dots	3	3	3	4	4	4	4	5	5	6	6
Horizontal	3	3	3	4	4	4	4	5	5	6	6
Vertical	3	3	3	4	4	4	4	5	5	6	6
Diagonal	3	3	3	4	4	4	4	5	5	6	6



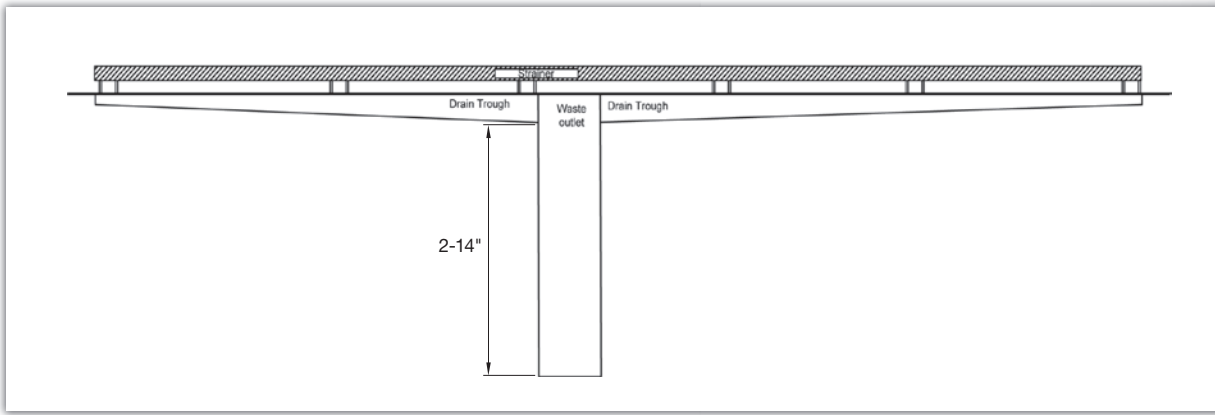
Product Description

Custom Drains.

Custom drains can be made for any size in any situation. ProLine drains can be made in any size increment between 10 inches and 10 feet long. QuickDrain USA can also customize and add multiple drain outlets for high-flow capacity.

- Irregular size - Custom drains made in any size increment between 10 inches and 100 inches long than our standard sizes.

Maximum size with one waste outlet is 68" total length not including the flanges. Drains longer than 68" must have two waste outlets per trough due to the depth, length and internal pitch of the trough.

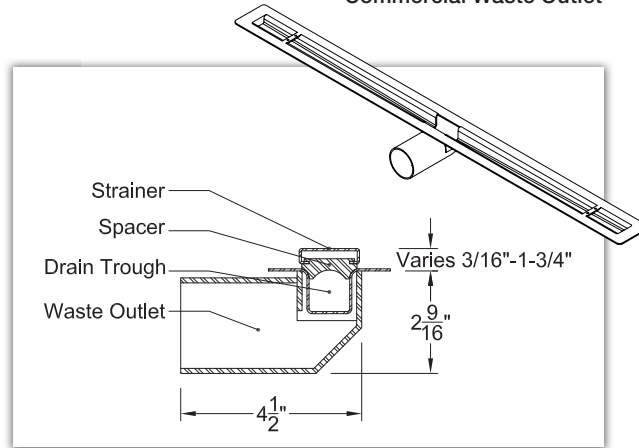


Commercial Waste Outlet

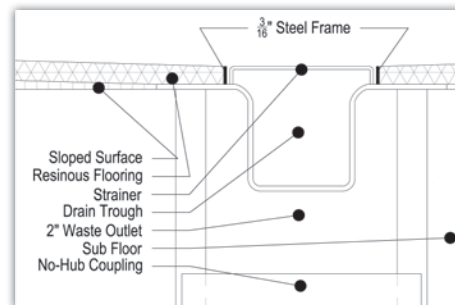
- Commercial Waste Outlet - Waste outlets can be made in custom lengths from 2" below the trough to 14" below the trough. Commercial facilities usually require longer waste outlets due to issues with fireproofing. Longer pipes for waste lines go through the whole concrete floor and the plumbing connection is done below the fireproofing.

- Side Outlet - Primarily used in retrofitting situations. When there are limitations on the space and location of the existing floors and outlets, the side outlet drops and turns 90 degrees. Can eliminate the need to drill through concrete.

- Resinous Flooring - These drains are suitable for epoxy, urethane and sheet vinyl flooring. Mainly for commercial uses. Total height from waterproofing to the finished floor is 3/16". Since sheet waterproofing is not a typical part of a resinous/vinyl flooring system, this drain does not come with the waterproof membrane attached to the drain body.



Side Outlet

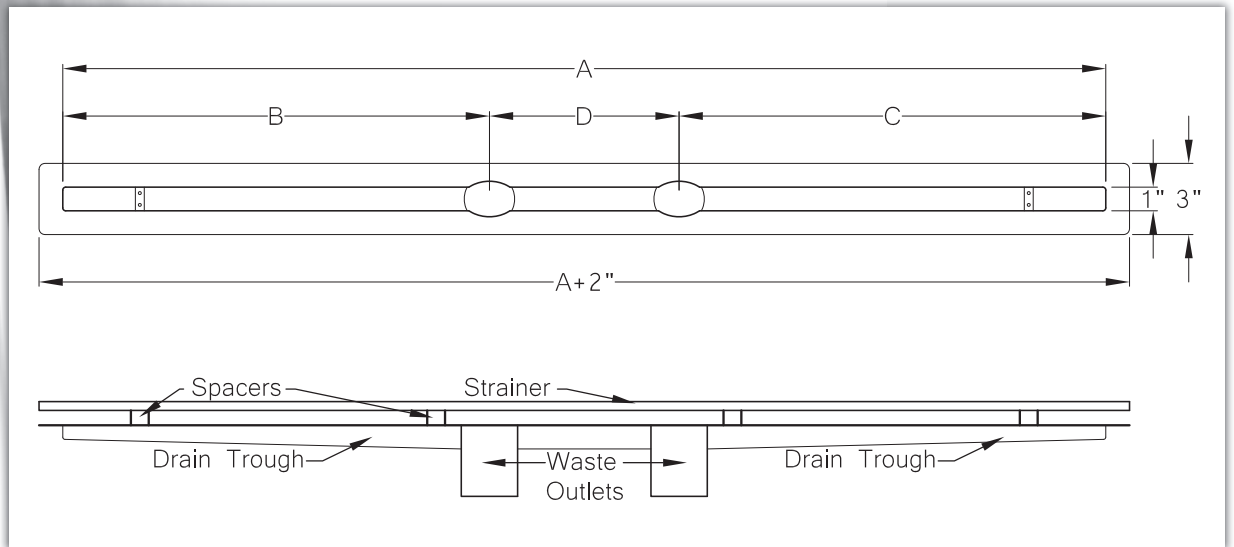


Resinous Flooring

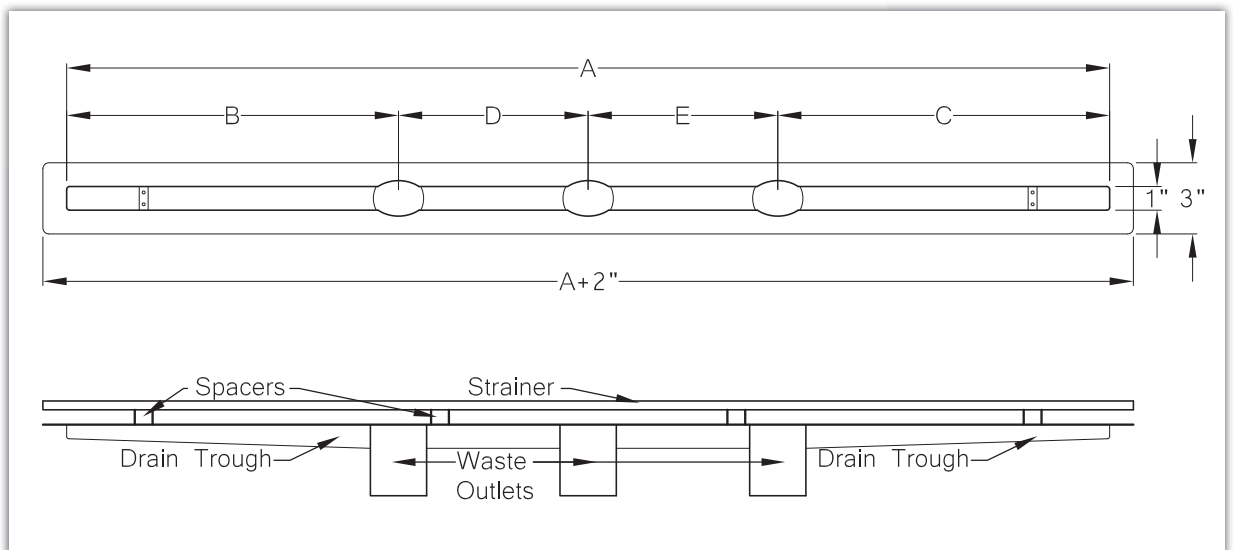
Product Description

- Multiple Outlets - Water flow output of more than 10 gallons per minute can be addressed with additional outlets on the drain body. The appearance is the same as a standard drain, but the capacity can double or triple. Any amount of flow volume can be achieved with this system.

The following drawings show the standard locations of waste outlets.



Two Waste Outlets

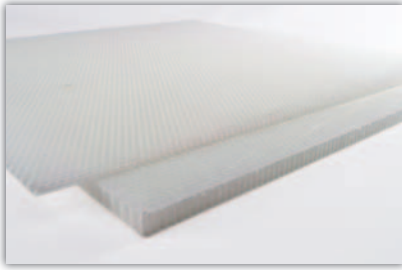


Three Waste Outlets

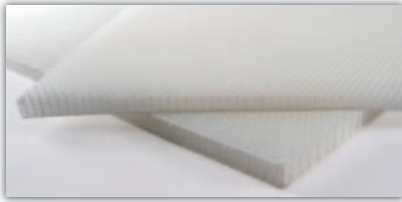
Almost any location of waste outlets and flow volume can be achieved with this system.

Product Description

Accessories



Quick Slope



Flat Panel

For more details please see
www.QuickDrainUSA.com
or call: 970.668.0805.

QS30P — Quick Slope: Prefabricated one-way sloping material made of polypropylene honeycomb that is pre-cut at a 2% pitch. Leading edge at the drain 1/8"; trailing edge away from drain 3/4". Comes in 30" x 30" x 1/8" to 3/4" sheets with compression strength of 230 psi. Cuts with utility knife.

FP30P — Flat Panel: 30" x 30" x 5/8" flat sheet of polypropylene honeycomb with a veil for thinset adhesion. Compression strength of 230 psi. Serves as an extension for slopes or shower pans with a run larger than 30 inches. Quick Slope is placed on top of the Flat Panel to extend the slope.

FP30P1 — Flat Panel: 30" x 30" x 1" flat sheet of polypropylene honeycomb with a veil for thinset adhesion. Compression strength of 230 psi. Serves as a filler under Quick Slope for above floor installations.

QS60SS — Quick Slope: One-way sloping material; polypropylene honeycomb, pre-cut at a 2% pitch with 230 psi compression strength. Leading Edge at drain (30" side) is 1/8"; trailing edge away from drain is 1-3/8". Dimensions 30" x 60" x 1/8" to 1-3/8". Ideal for tub-to-shower conversions where waste line is below the subfloor. **Minimum order of 15.**

FP60P1 — Flat Panel: 30" x 60" x 1" flat sheet of polypropylene honeycomb with a veil for thinset adhesion. 230 psi compression strength. Serves as a filler under Quick Slope for above floor installations. Ideal for tub-to-shower conversions where the drain is set above sub-floor. **Minimum order of 15.**

FP60P3 — Flat Panel: 30" x 60" x 3" flat sheet of polypropylene honeycomb with a veil for thinset adhesion. 230 psi compression strength. Serves as a filler under Quick Slope for above floor installations. Ideal for tub-to-shower conversions where there is no penetration into the sub-floor and waste line is in the chase behind the wall. Used with side outlet drains. **Minimum order of 15.**

QS8PP — Quick Slope: Prefabricated one-way sloping material made of polypropylene honeycomb that is pre-cut at a 2% pitch. Leading edge at the drain 1/8"; trailing edge away from drain 3/8". Comes in 30" x 8" x 1/8" to 3/8" sheets with a compression strength of 230 psi. Cuts with a utility knife. Ideal for drain placement that is 8" or less from wall. **Minimum order of 5.**

CURB3 — Curb Form: Curb form made from rigid PET foam with 270 psi compression strength. Dimensions 2-1/2" x 3-1/2" x 61". Ideal for tub to shower conversions where waste line is below the subfloor.

CURB5 — Curb Form: Curb form made from rigid PET foam with 270 psi compression strength. Dimensions 2-1/2" x 5" x 61". Ideal for tub to shower conversions where there is no penetration into the subfloor and waste line is in the chase behind the wall. Used with side outlet drains.

Product Description

Accessories

QTS39 — Waterproofing: 39" wide sheet of waterproofing pan liner membrane used to create a watertight shower pan. Sold by the linear foot.

QTS78 — Waterproofing: 78" wide sheet of waterproofing pan liner membrane used to create a watertight shower pan. Sold by the linear foot.

QS007 — QuickSeal Membrane Adhesive: Used to join two pieces of membrane together and create a watertight seam.

QTSOC — Outside Corners: Pre-formed molds of waterproofing membrane intended to hug angles created by outside corners.

QTSIC — Inside Corners: Pre-formed molds of waterproofing membrane intended to hug 90-degree angles created by inside corners.

PLBSS — Placement Brackets: Metal saddle for drain body. Set directly into recess in sub-floor. Used to keep drain parallel and set the correct distance from drain to wall. To be used for installation that is level with the sub-floor.

LVBSS — Leveling Bracket, Short: Metal saddle with two leveling screws, one set screw and L-shaped wall connector. One bracket is placed on either end of drain to keep drain parallel and set the correct distance from drain to wall. To be used for installation that is above the sub-floor. Distance between drain and wall may be set up to 3".

LVBSL — Leveling Bracket, Long: Metal saddle with two leveling screws, one set screw and L-shaped wall connector. One bracket is placed on either end of drain to keep drain parallel and set the correct distance from drain to wall. To be used for installation that is above the sub-floor. Distance between drain and wall may be set up from 3" to 6".

ILCSS — In-Line Strainer Connectors: Connects multiple strainers in a line.

CRCSS — Corner Strainer Connectors: Connects strainer pieces at 90-degree angles.

For more details please see www.QuickDrainUSA.com or call: 970.668.0805.



Placement Bracket



Leveling Brackets – Short and Long



In-Line Connector



Corner Connector

Plumbing Code Listings and Approvals

Standard drains and the QuickLinerTS waterproof membrane are UPC and PMG listed.

Standard drains — UPC & CUPC listing#: 6181 and PMG listing#: 1042
Meets or exceeds ASME A112.18.2-2005

Membrane — UPC listing #: 5130 and PMG listing#: 1105 — Meets or exceeds ANSI A118.10-2008

Please contact your local building official before installation to ensure local building code compliance.

Go to www.QuickDrainUSA.com for updates on listings and approvals.



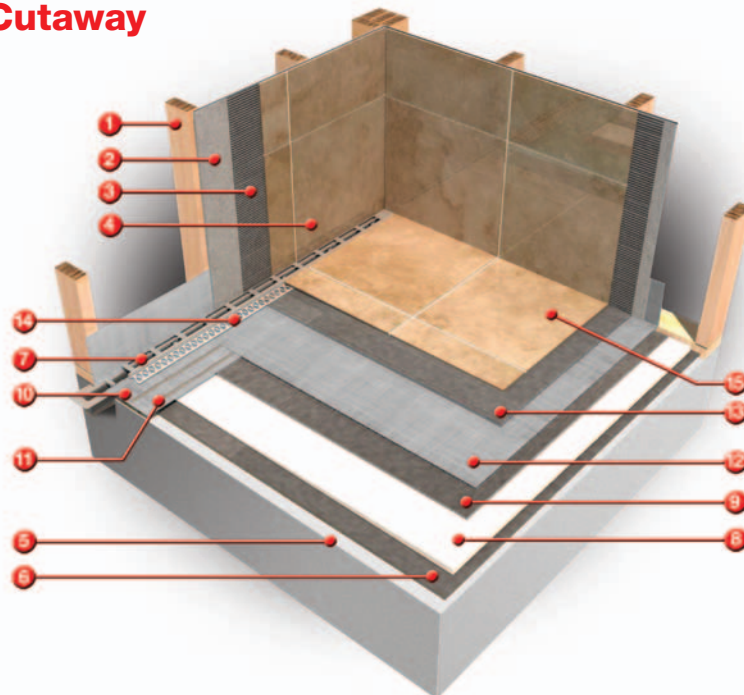
Installations

Critical Installation Tips

Tips on ordering and preparing to install:

- The biggest benefit of using a linear drainage system is to prevent a compound slope in a drainage surface. The pitch has to be done on the whole plane the same direction and not in multiple directions. This allows for simple and fast installation of large tiles or even slabs on the shower floor.
- When installing the ProLine Drain, be sure the length of the drain strainer runs the entire length of the shower opening.
- The rough opening from bare stud to bare stud will determine the size of the drain.
- When ProLine Drain is installed at the wall-floor joint, attention has to be paid to the distance of the center of the waste outlet to the framing. This distance is referred to as "Measurement A" in the installation manual. To achieve a flawless installation at the wall, it is critical that the wall tile finishes directly at the back of the strainer. This assures there are no slivers of tile needed between the strainer and the back wall, and it leaves the strainer easily removable for cleaning. Measurement A is the cumulative thickness of all wall material thicknesses plus 7/8".
- On 30, 36, 40, 44, 48, 52 or 57-58" drain models, the waste outlet is located three inches off-center from the drain to avoid joists, beams and other in-floor obstacles. On 26, 27-1/2, 46, 63 or 68", the waste outlet is located in the center of the drain.
- Spacers are devices that provide for the correct spacing of the strainer from the drain body. The size of spacers reflects the total thicknesses of materials from the waterproofing to the top finished surface of the shower pan material. This includes the following layers: waterproofing membrane, mortar bed – if used, thinset and the finish tile or stone.
- Integral waterproofing comes factory attached to the drain body. Each drain comes with a manufacturer's warranty.
- When unsure of drain sizes, placement and installation condition, please call tech. support at **970.668.0805 opt# 5**.

Installation Cutaway



Wall Assembly:

- 1 Stud Wall
- 2 Backer Board
- 3 Thinset
- 4 Wall Tile

Floor Assembly:

- 5 Subfloor
- 6 Thinset
- 7 Quick Drain
- 8 Quick Slope Board (2% slope)
- 9 Thinset
- 10 Drain Membrane
- 11 Sealant
- 12 Waterproofing Membrane (pan liner)
- 13 Thinset
- 14 Tile Edging
- 15 Floor Tile

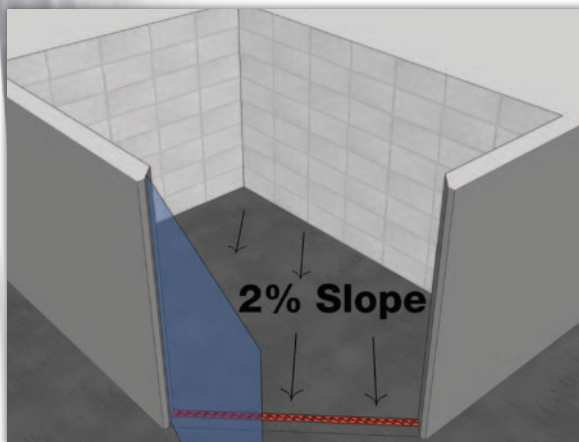
Installations

Drain Placement — Accessible Showers

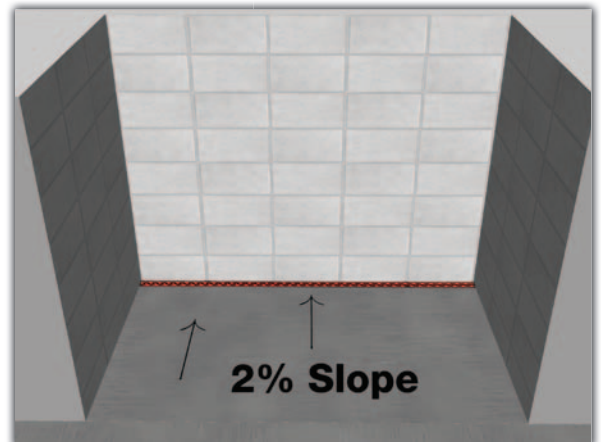
The most critical aspect is the requirement for wheelchair accessibility!

If a wheelchair accessible shower pan is required or desired ProLine Drain must be placed parallel to the shower entry. The location is not critical but the orientation is. This is the only option for a true accessible shower pan because there will be no change of slope inside the shower pan. The slope rate and direction will stay constant (perpendicular to the length of the drain).

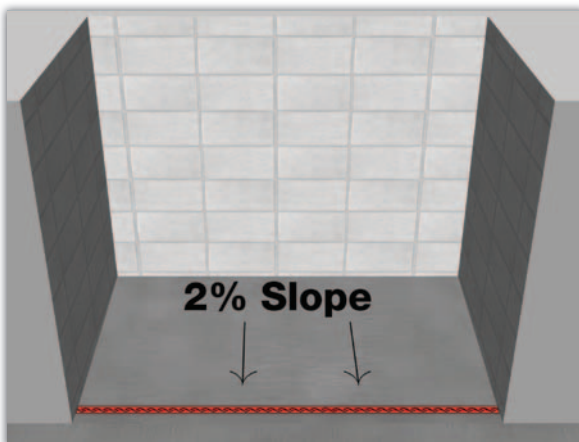
Please see following examples:



ProLine Drain at the entry opposite to the highest point.

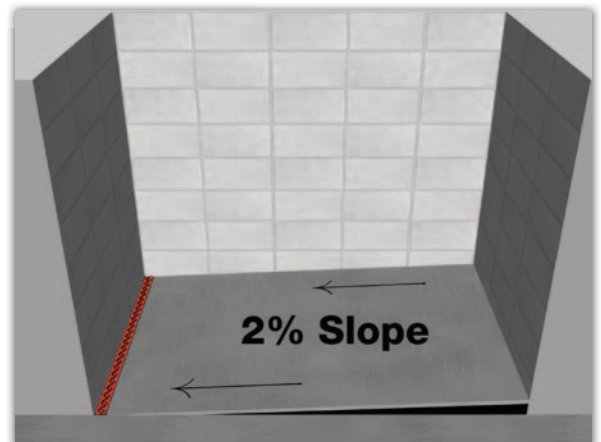


ProLine Drain at the back of the shower.



ProLine Drain at the entry to the shower.

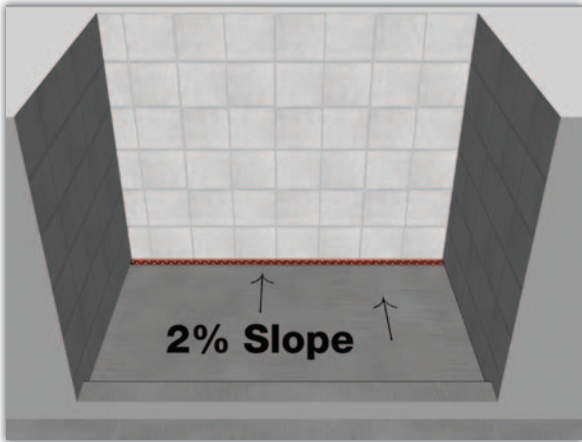
Do NOT Do This!



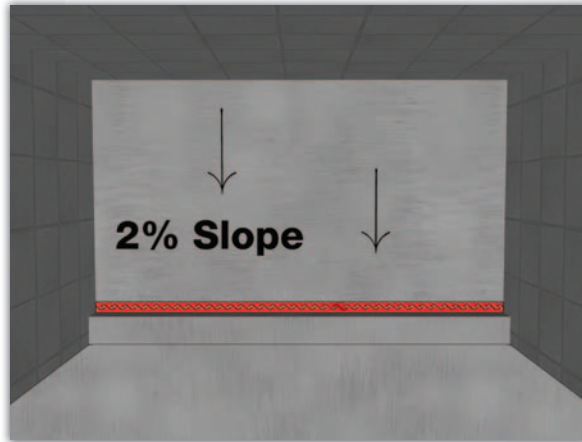
This is not an acceptable shower design for an accessible shower. There will be a height difference between the shower floor and the rest of the bathroom floor.

Installations

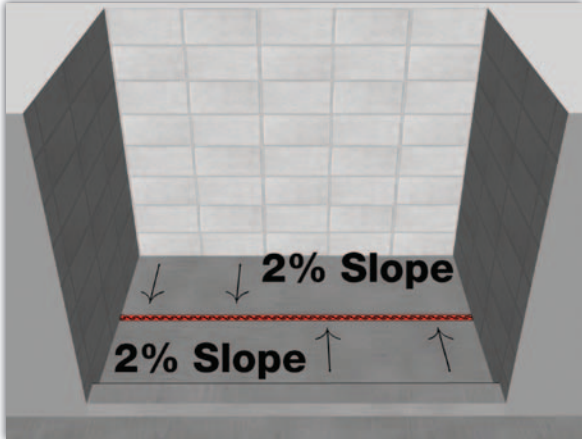
Drain Placement When Accessibility is Not Required



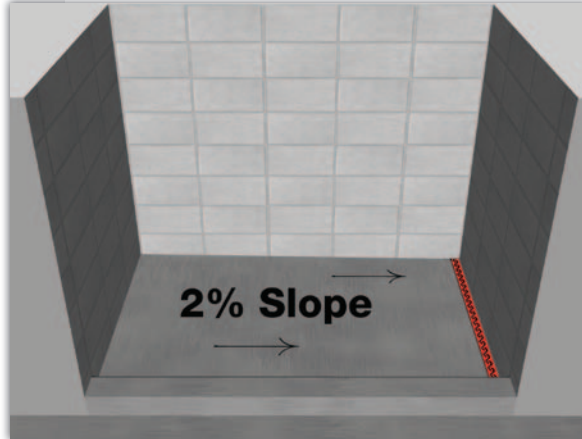
ProLine Drain at the back wall opposite the shower entry.



ProLine Drain at the shower entry right behind curb.



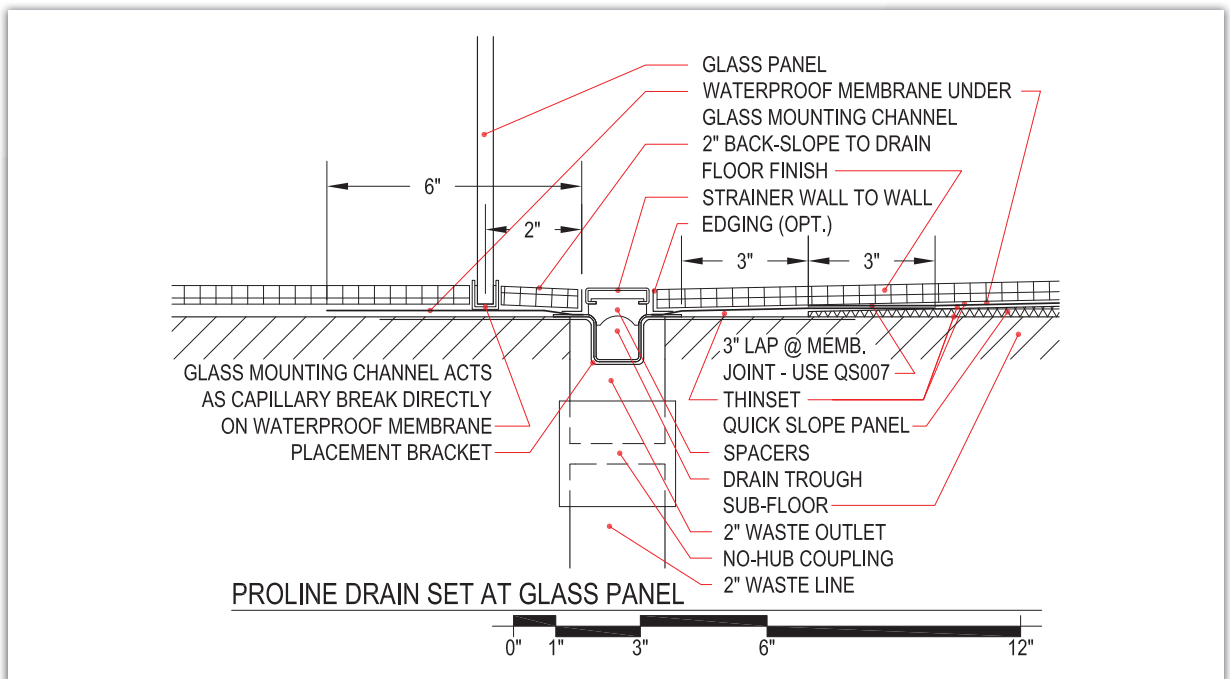
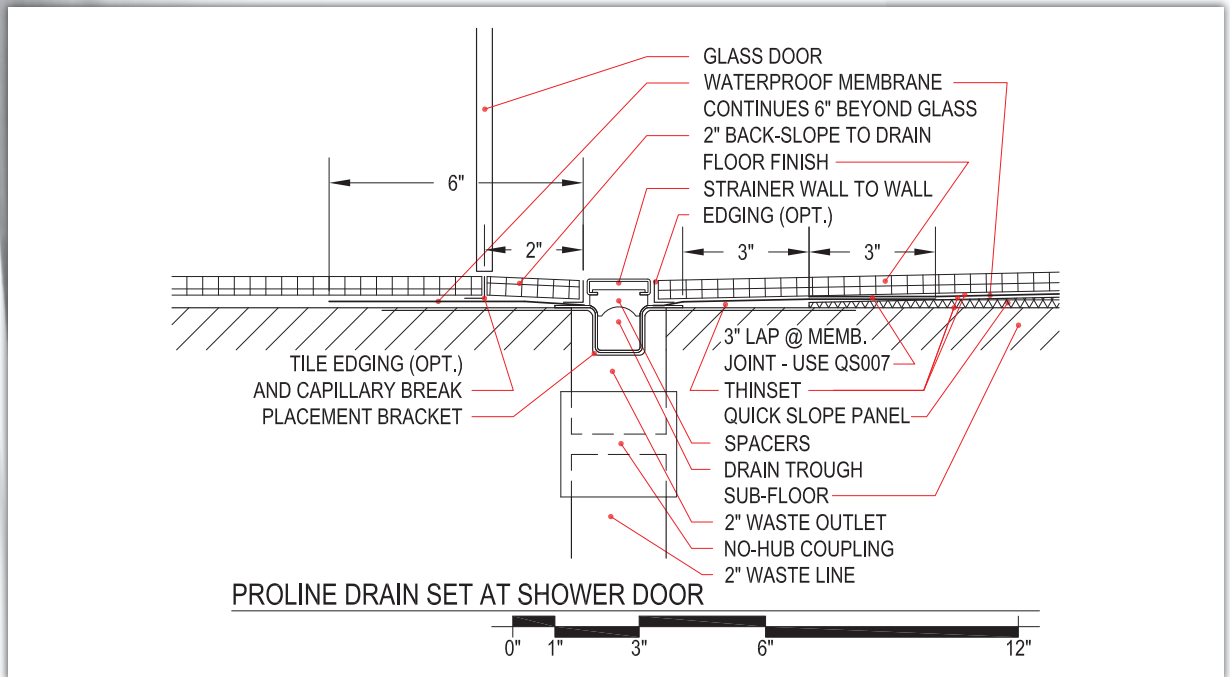
ProLine Drain at the shower center.



ProLine Drain at the side wall. Usually done when replacing a standard tub, because there is no need to move waste plumbing.

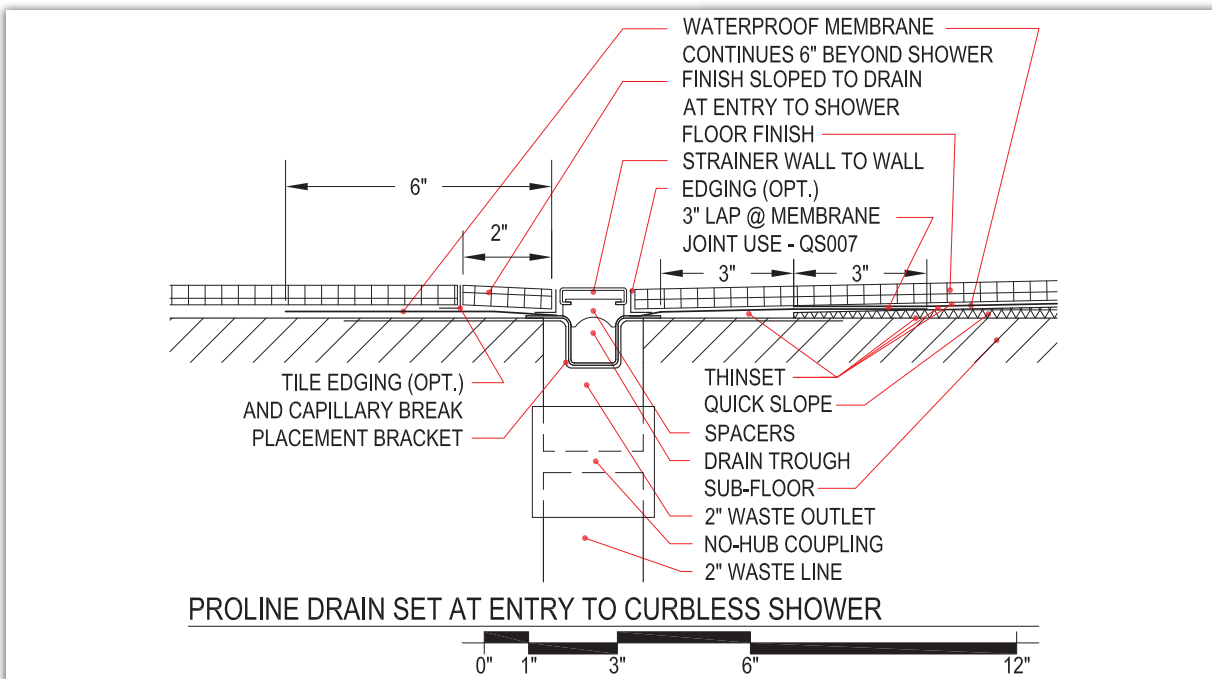
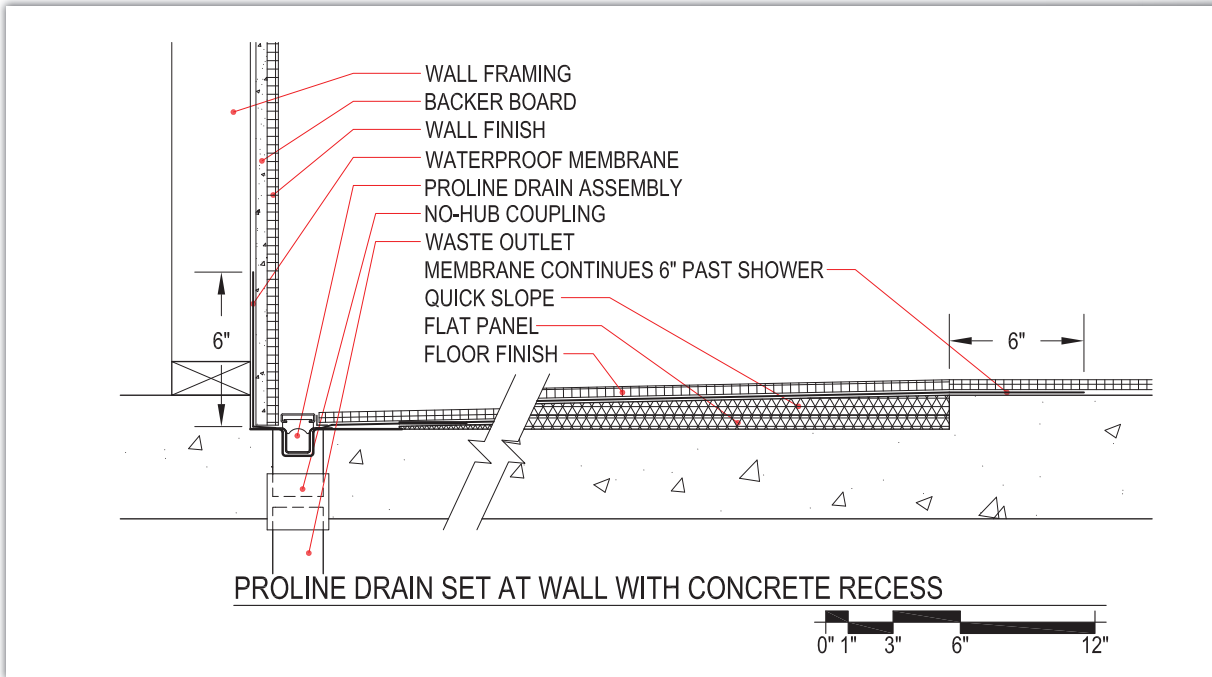
Installations

Typical ProLine Drain Installation Details



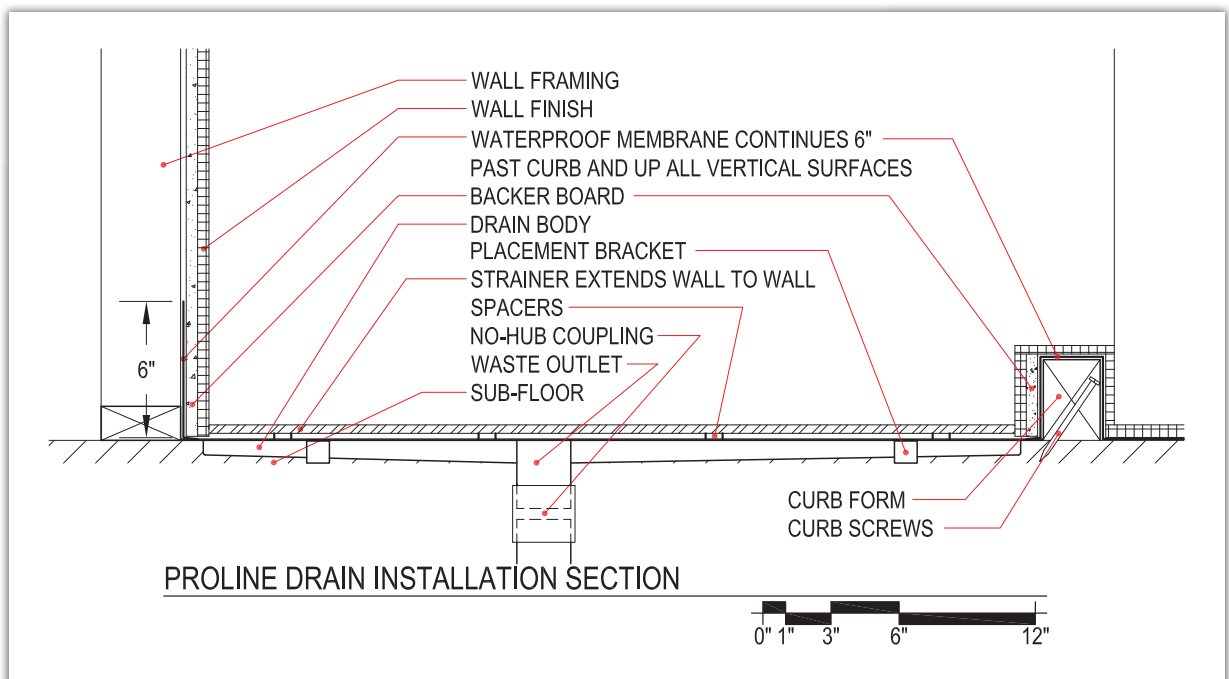
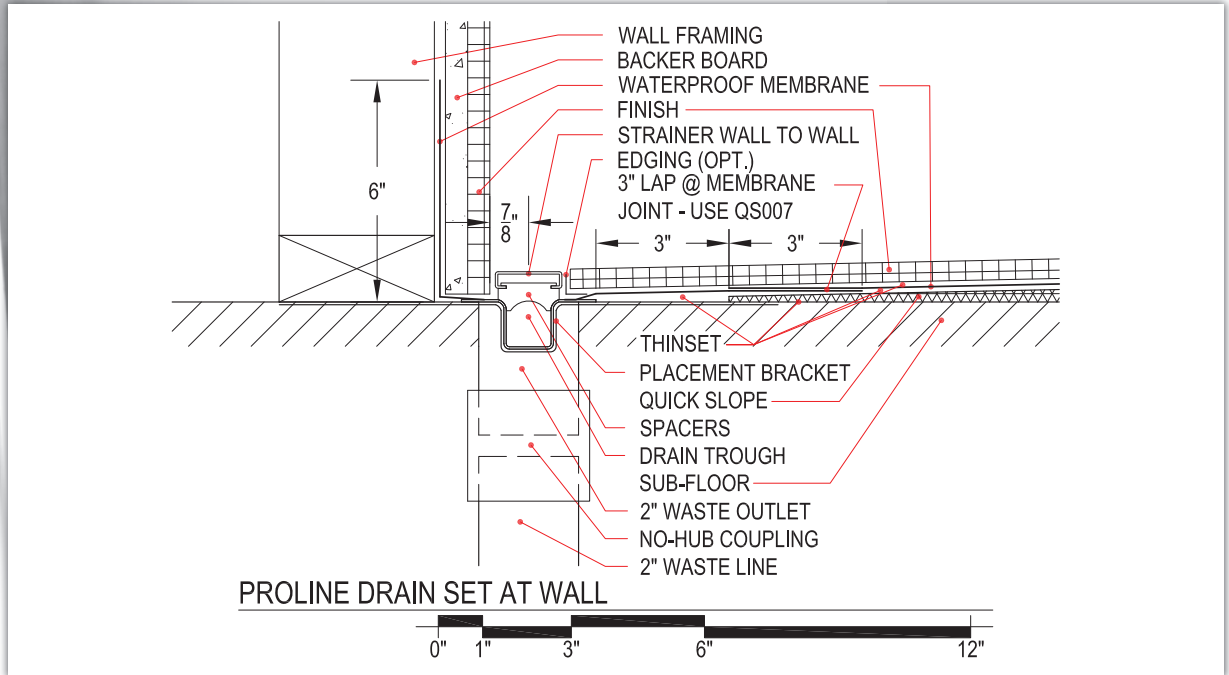
Installations

Typical ProLine Drain Installation Details



Installations

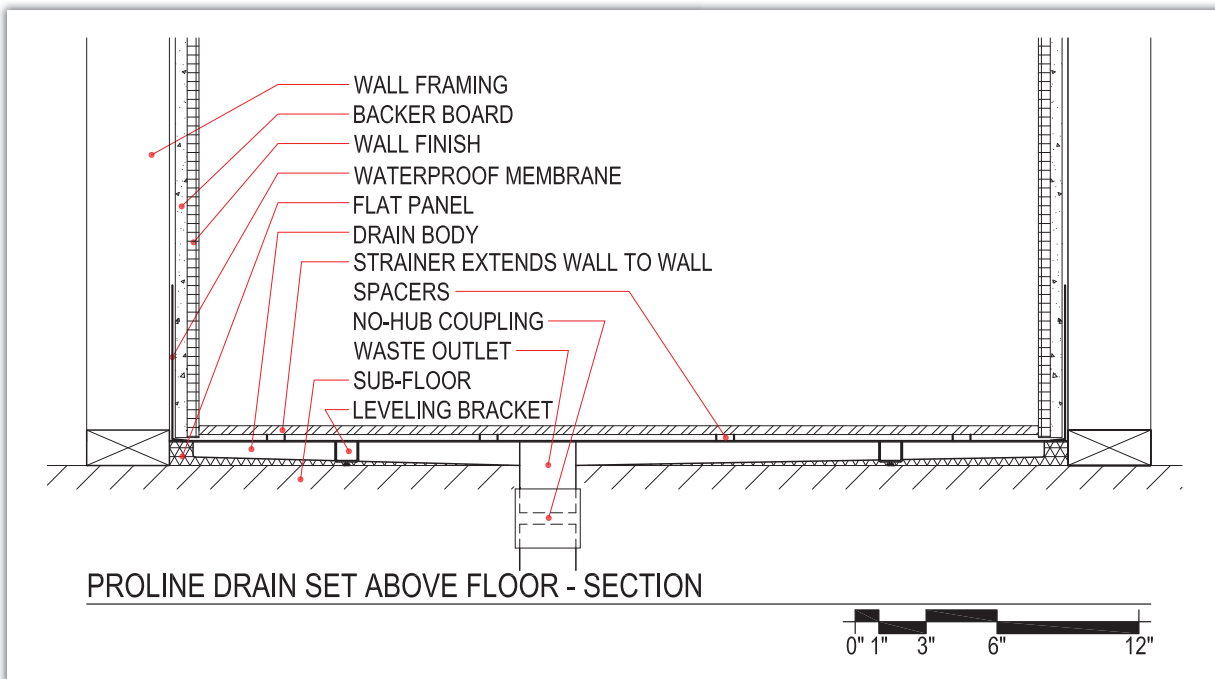
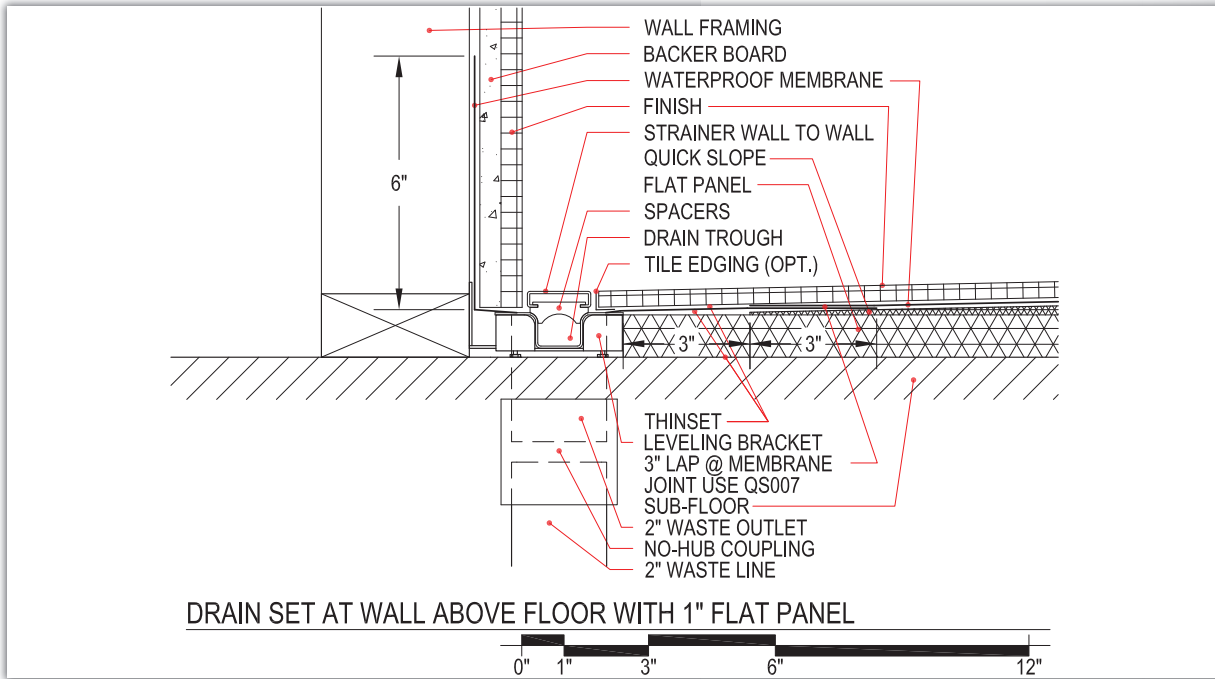
Typical ProLine Drain Installation Details



Note: Set all Quick Slope and Flat Panel on structurally sound, flat sub-floor with fast-setting, self-curing thinset. WAVES is the only recommended strain pattern for a drain installed at the entry to a curbless shower. 5 g.p.m. is the maximum recommended water flow for a drain installed at the entry to a curbless shower. Set the drain body level. Do not follow sub-floor if it is out of level.

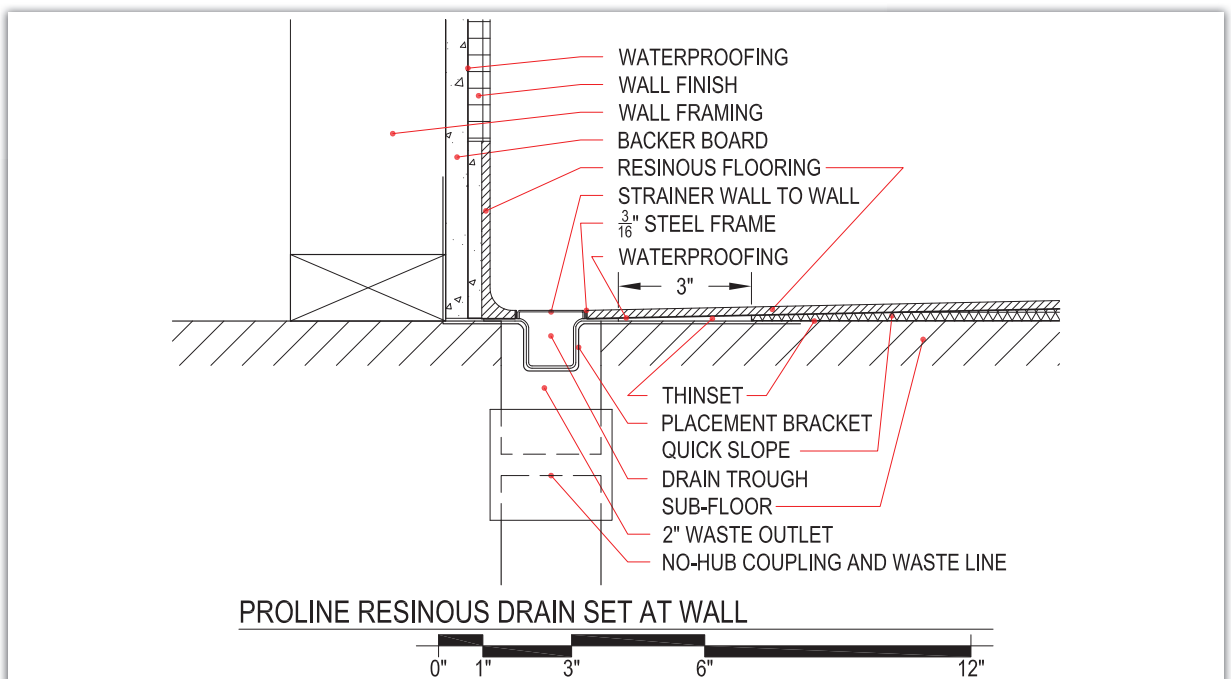
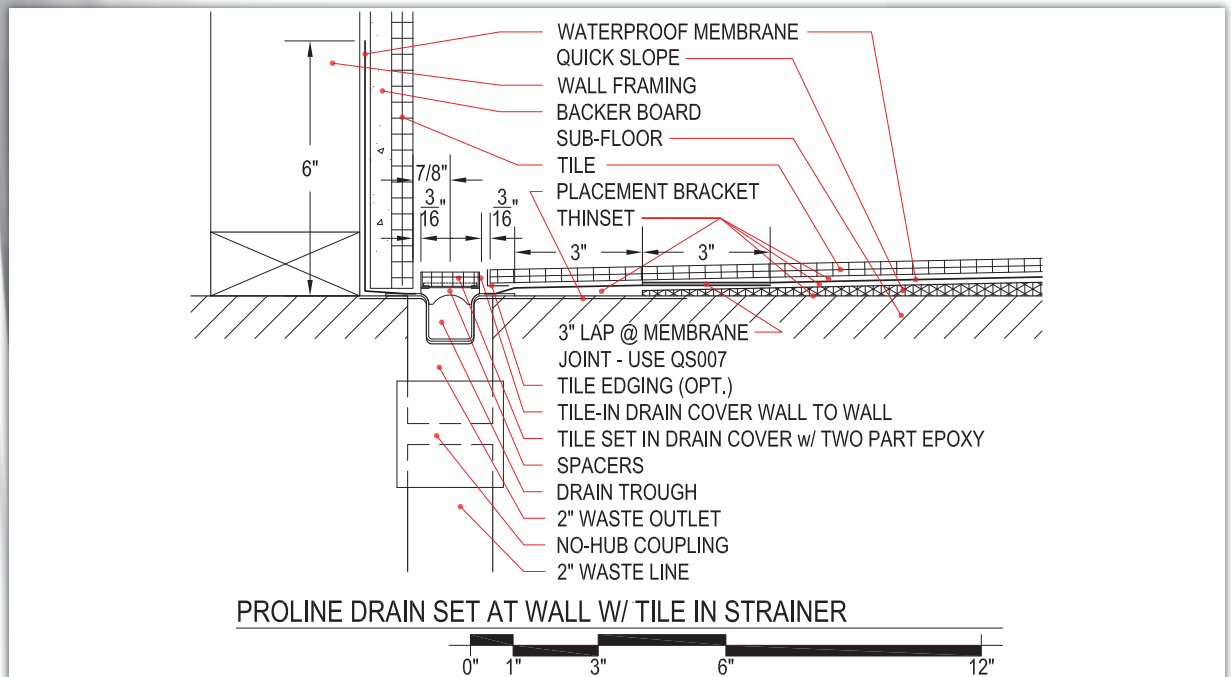
Installations

Typical ProLine Drain Installation Details



Installations

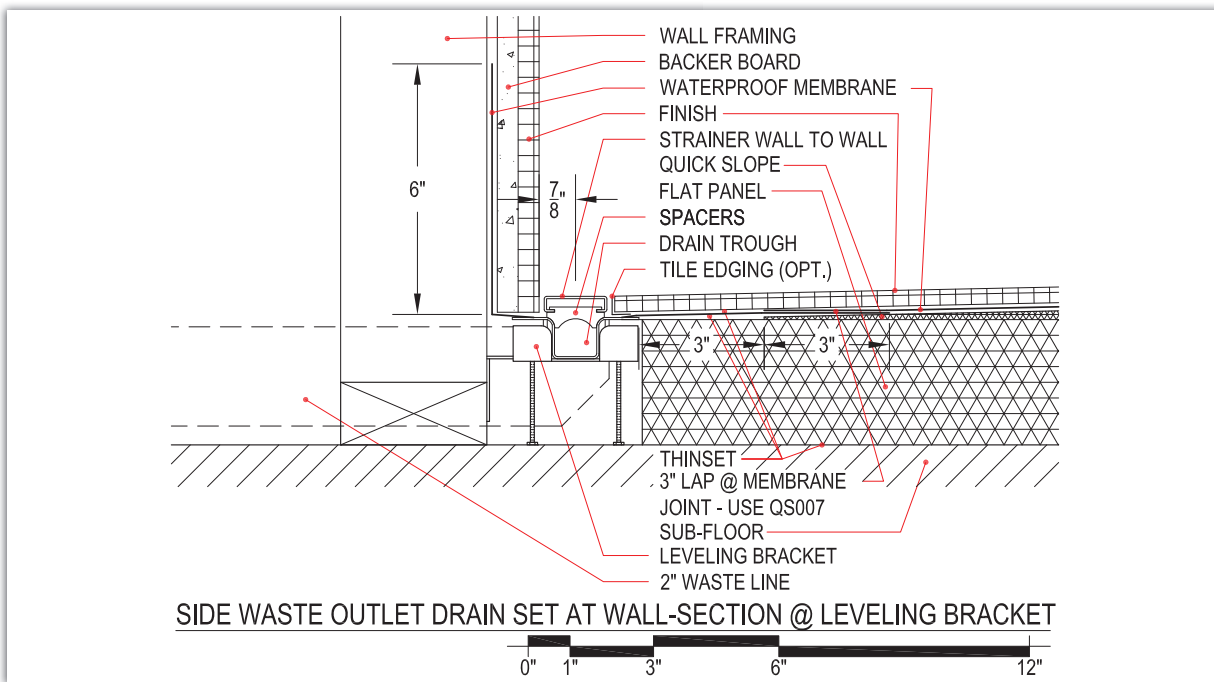
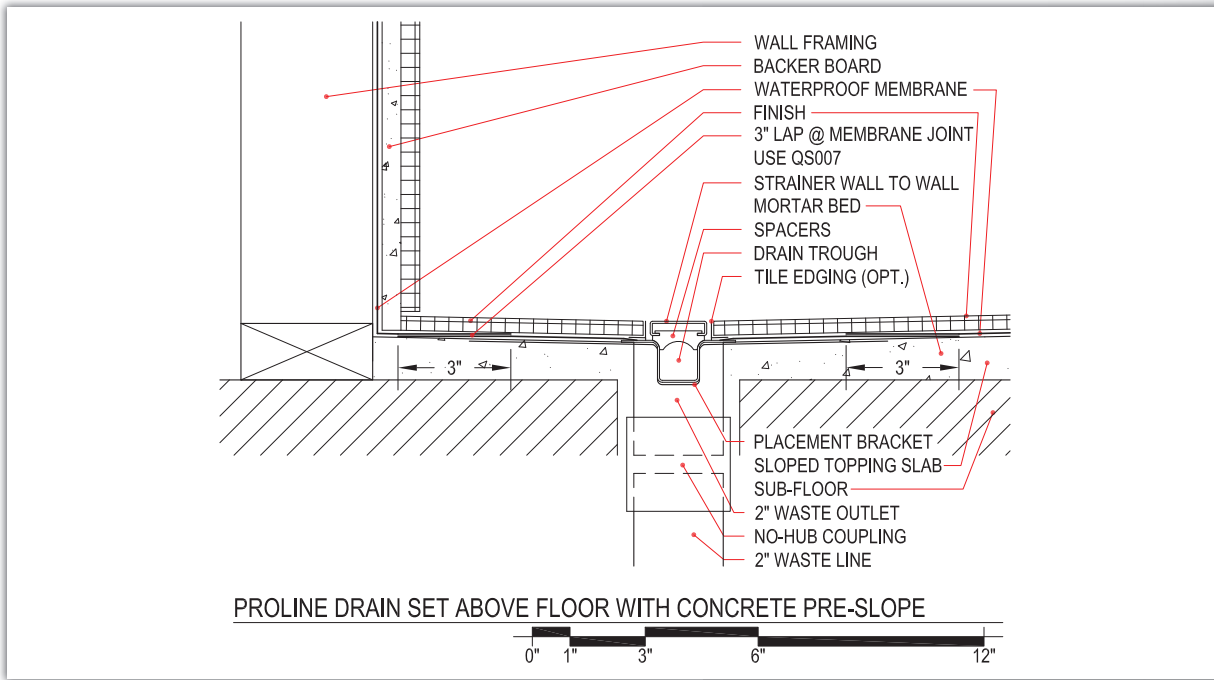
Typical ProLine Drain Installation Details



Note: Set all Quick Slope and Flat Panel on structurally sound, flat sub-floor with fast-setting, self-curing thinset. WAVES is the only recommended strain pattern for a drain installed at the entry to a curbless shower. 5 g.p.m. is the maximum recommended water flow for a drain installed at the entry to a curbless shower. Set the drain body level. Do not follow sub-floor if it is out of level.

Installations

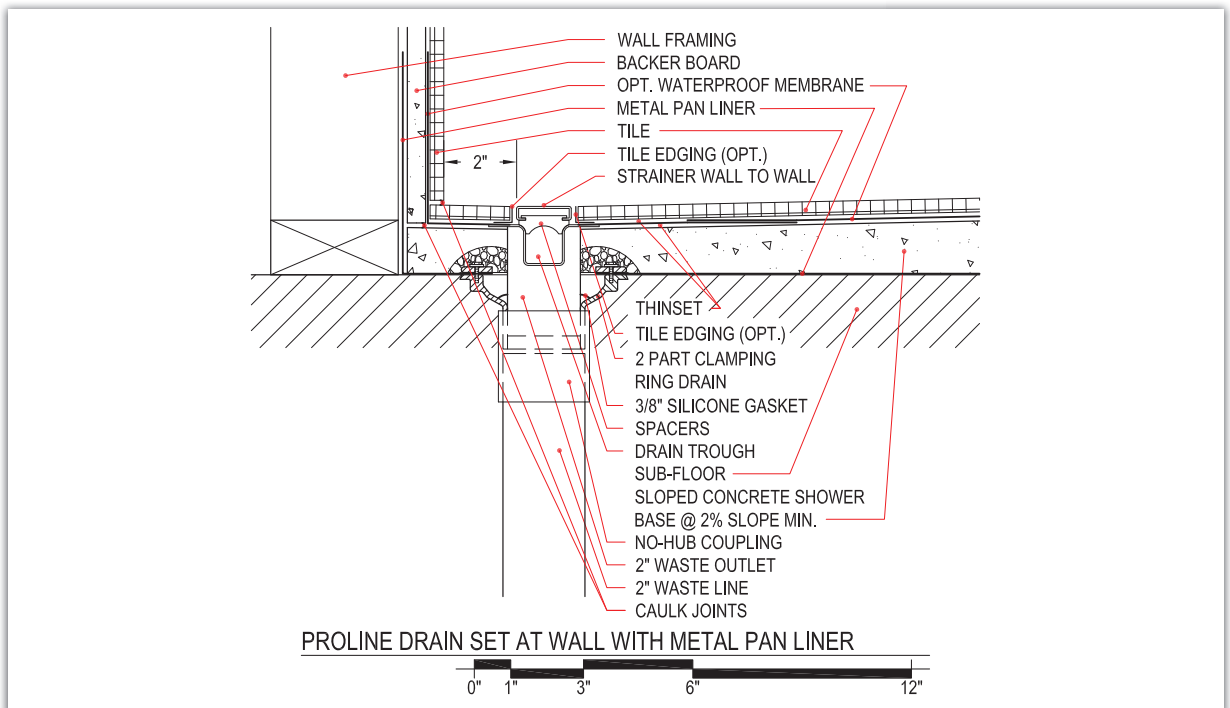
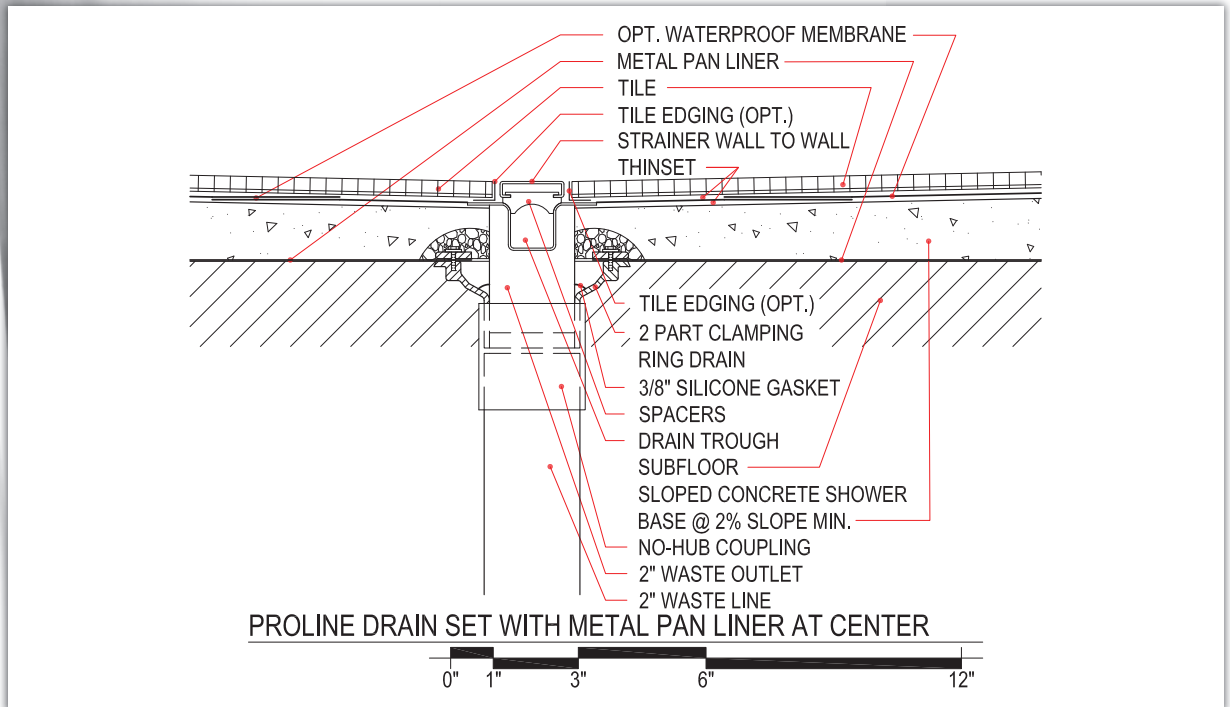
Typical ProLine Drain Installation Details



Note: Set all Quick Slope and Flat Panel on structurally sound, flat sub-floor with fast-setting, self-curing thinset WAVES is the only recommended strain pattern for a drain installed at the entry to a curbless shower. 5 g.p.m. is the maximum recommended water flow for a drain installed at the entry to a curbless shower. Set the drain body level. Do not follow sub-floor if it is out of level.

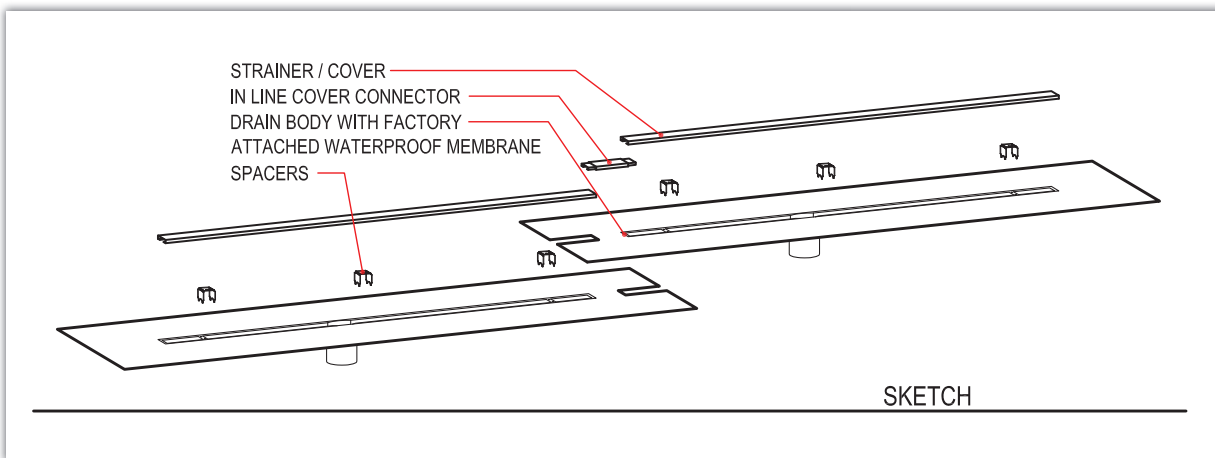
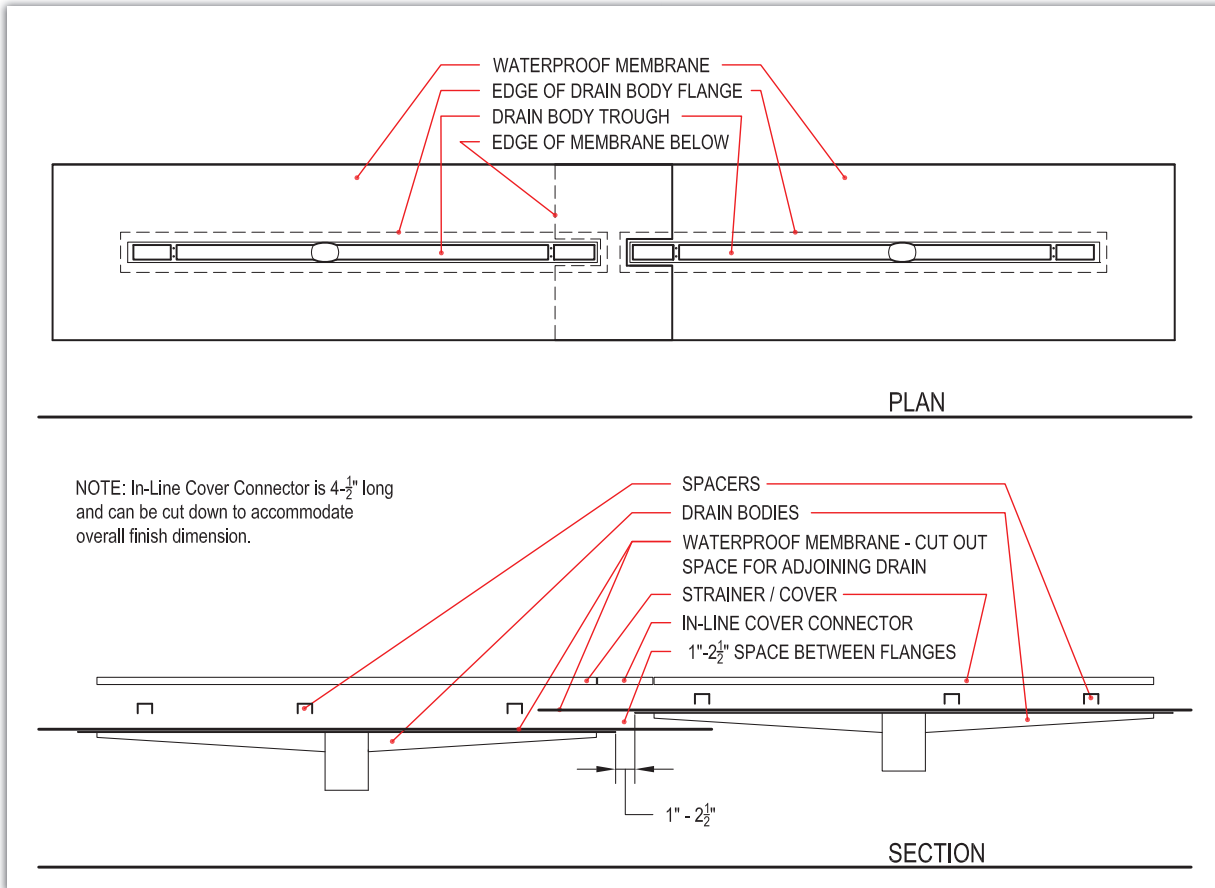
Installations

Typical ProLine Drain Installation Details



Installations

Installation Detail for Linking Multiple Drains



Easy Order Guide

ProLine Drain Assembly

1: Select the Drain Size

- Select the drain size closest to, but not longer than, shower width at drain location.
- For a curbed shower, drain can be placed at any wall or medial location.
- For a curbless shower, drain must be placed parallel to the entry.
- When used at the entry to a curbless shower as a primary shower drain, the capacity of the drain is 5g.p.m. and WAVES is the only recommended strainer pattern.
- Custom lengths and waste outlet configurations are available from 10"-100"
- Custom drains require 3-4 weeks lead time and quoted/signed-off drawing.
- Drain body cannot be cut to size or modified on site.

ITEM #	DESCRIPTION	<input checked="" type="checkbox"/>
PLD26	26" Trough Length, 28" Total Length, Fits R.O. 28"-32", F.O. 26"-30"	<input type="checkbox"/>
PLD27.5	27.5" Trough Length, 29.5" Total Length, Fits R.O. 29.5"-32", F.O. 27.5"-30"	<input type="checkbox"/>
PLD30	30" Trough Length, 32" Total Length, Fits R.O. 32"-38", F.O. 30"-36"	<input type="checkbox"/>
PLD36	36" Trough Length, 38" Total Length, Fits R.O. 38"-42", F.O. 36"-40"	<input type="checkbox"/>
PLD40	40" Trough Length, 42" Total Length, Fits R.O. 42"-46", F.O. 40"-44"	<input type="checkbox"/>
PLD44	44" Trough Length, 46" Total Length, Fits R.O. 46"-48", F.O. 44"-46"	<input type="checkbox"/>
PLD46	46" Trough Length, 48" Total Length, Fits R.O. 48"-50", F.O. 46"-48"	<input type="checkbox"/>
PLD48	48" Trough Length, 50" Total Length, Fits R.O. 50"-54", F.O. 48"-52"	<input type="checkbox"/>
PLD52	52" Trough Length, 52" Total Length, Fits R.O. 54"-60", F.O. 52"-58"	<input type="checkbox"/>
PLD57	57" Trough Length, 59" Total Length, Fits R.O. 59"-65", F.O. 57"-63"	<input type="checkbox"/>
PLD63	63" Trough Length, 65" Total Length, Fits R.O. 65"-71", F.O. 63"-69"	<input type="checkbox"/>
PLD68	68" Trough Length, 70" Total Length, Fits R.O. 70"-76", F.O. 68"-74"	<input type="checkbox"/>

2: Select a Drain Strainer Pattern, Size and Finish (aka: cover/grate/grill/trim)

- Brushed stainless steel is the standard strainer finish.
- Satin and Polished are custom finishes that require 2-3 weeks lead time. See price schedule for cost and item numbers.
- All strainer patterns can be trimmed up to 3" (1-1/2" each end) without cutting into pattern. The WAVES pattern can be cut to any length.
- Strainer length can be up to 6" longer than drain trough length.
- QuickDrain recommends the strainer extend the entire length of the shower. Wall to wall or wall to curb.

LENGTH	HORIZONTAL <input checked="" type="checkbox"/>	VERTICAL <input checked="" type="checkbox"/>	DIAGONAL <input checked="" type="checkbox"/>	WAVES <input checked="" type="checkbox"/>	DOTS <input checked="" type="checkbox"/>	TILEIN <input checked="" type="checkbox"/>
28	HORIZONTAL28 <input type="checkbox"/>	VERTICAL28 <input type="checkbox"/>	DIAGONAL28 <input type="checkbox"/>	WAVES28 <input type="checkbox"/>	DOTS28 <input type="checkbox"/>	TILEIN28 <input type="checkbox"/>
30	HORIZONTAL30 <input type="checkbox"/>	VERTICAL30 <input type="checkbox"/>	DIAGONAL30 <input type="checkbox"/>	WAVES30 <input type="checkbox"/>	DOTS30 <input type="checkbox"/>	TILEIN30 <input type="checkbox"/>
36	HORIZONTAL36 <input type="checkbox"/>	VERTICAL36 <input type="checkbox"/>	DIAGONAL36 <input type="checkbox"/>	WAVES36 <input type="checkbox"/>	DOTS36 <input type="checkbox"/>	TILEIN36 <input type="checkbox"/>
40	HORIZONTAL40 <input type="checkbox"/>	VERTICAL40 <input type="checkbox"/>	DIAGONAL40 <input type="checkbox"/>	WAVES40 <input type="checkbox"/>	DOTS40 <input type="checkbox"/>	TILEIN40 <input type="checkbox"/>
44	HORIZONTAL44 <input type="checkbox"/>	VERTICAL44 <input type="checkbox"/>	DIAGONAL44 <input type="checkbox"/>	WAVES44 <input type="checkbox"/>	DOTS44 <input type="checkbox"/>	TILEIN44 <input type="checkbox"/>
46	HORIZONTAL46 <input type="checkbox"/>	VERTICAL46 <input type="checkbox"/>	DIAGONAL46 <input type="checkbox"/>	WAVES46 <input type="checkbox"/>	DOTS46 <input type="checkbox"/>	TILEIN46 <input type="checkbox"/>
48	HORIZONTAL48 <input type="checkbox"/>	VERTICAL48 <input type="checkbox"/>	DIAGONAL48 <input type="checkbox"/>	WAVES48 <input type="checkbox"/>	DOTS48 <input type="checkbox"/>	TILEIN48 <input type="checkbox"/>
52	HORIZONTAL52 <input type="checkbox"/>	VERTICAL52 <input type="checkbox"/>	DIAGONAL52 <input type="checkbox"/>	WAVES52 <input type="checkbox"/>	DOTS52 <input type="checkbox"/>	TILEIN52 <input type="checkbox"/>
58	HORIZONTAL58 <input type="checkbox"/>	VERTICAL58 <input type="checkbox"/>	DIAGONAL58 <input type="checkbox"/>	WAVES58 <input type="checkbox"/>	DOTS58 <input type="checkbox"/>	TILEIN58 <input type="checkbox"/>
63	HORIZONTAL63 <input type="checkbox"/>	VERTICAL63 <input type="checkbox"/>	DIAGONAL63 <input type="checkbox"/>	WAVES63 <input type="checkbox"/>	DOTS63 <input type="checkbox"/>	TILEIN63 <input type="checkbox"/>
68	HORIZONTAL68 <input type="checkbox"/>	VERTICAL68 <input type="checkbox"/>	DIAGONAL68 <input type="checkbox"/>	WAVES68 <input type="checkbox"/>	DOTS68 <input type="checkbox"/>	TILEIN68 <input type="checkbox"/>

3: Select the Spacer Size

- Spacers are used to attach the strainer to the drain body and set the correct distance from the drain body flange to the top of the drain strainer. This is the same distance as the complete floor finish from waterproofing to top of finish, including setting bed.
- The cost of one set of spacers is included with every drain body. 1 spacer for every 10"-12" of drain body length.
- Spacer size must be specified on purchase order.
- Spacers can be shipped at a later date with an additional shipping charge & PO.

ITEM #	DESCRIPTION	<input checked="" type="checkbox"/>
SP1/2	Sets the strainer 1/2" above the drain body	<input type="checkbox"/>
SP5/8	Sets the strainer 5/8" above the drain body	<input type="checkbox"/>
SP 3/4	Sets the strainer 3/4" above the drain body	<input type="checkbox"/>
SP1	Sets the strainer 1" above the drain body	<input type="checkbox"/>
SP1 1/2	Sets the strainer 1 1/2" above the drain body	<input type="checkbox"/>
SP1 3/4	Sets the strainer 1 3/4" above the drain body	<input type="checkbox"/>
SP2 1/2	Sets the strainer 2 1/2" above the drain body	<input type="checkbox"/>

Refer to current price list for costs.

See web site for additional products, cut sheets, installation details and instructions.

Call technical services for any product or installation questions: 970.668.0805 #5

Call customer service or sales for ordering assistance: 970.668.0805 #1 or #2

Easy Order Guide

QD Shower Pan System

1. QuickLiner TS Waterproof Membrane – Shower Pan Liner

- More waterproof membrane is needed to complete the shower pan. This will be adhered to the 6" of membrane that comes attached to the drain body.
- QuickDrain offers two widths, 39" wide (QTS39) and 78" wide (QTS78). Membrane is ordered by the lineal foot.
- Based on the length and width of the shower pan, order enough waterproof membrane to cover the shower floor, a 3" overlap onto the drain membrane and go up the walls at least 6".

ITEM #	SIZE	LINEAL QTY
QTS39	39" Wide	
QTS78	78" Wide	

2. QS007 QuickSeal Membrane Adhesive

- Use the QuickSeal membrane adhesive to bond drain body membrane to shower floor membrane.
- Each roll is 118" long and 1-1/2" wide.

ITEM #	SIZE	QTY
QS007	1-1/2" Wide x 118 Long	

3. Placement Brackets or Leveling Brackets

- Placement or leveling brackets will hold the drain in place during shower pan construction.
- Placement brackets are used when the drain body is recessed 1" into the sub-floor.
- Leveling brackets are used when the drain body is placed 1" or more above the sub floor and at a wall.
- **Two brackets per drain body are required, they are sold separately.**

ITEM #	DESCRIPTION	QTY
PLBSS	Metal saddle for drain body that is set into recess in sub-floor	
LVBSS	Metal saddle for drain body that is set above sub-floor up to 3" from wall	
LVBSL	Metal saddle for drain body that is set above sub-floor 3" to 6" from wall	

4. Quick Slope and Flat Panel – pre-slope for any size or shape shower in under 1 hour

- Quick Slope Panels (QS30P) are used to create slope to the drain. Dimensions: 30"x30" with a one-way 2% slope. Leading edge at the drain is 1/8" and trailing edge away from the drain is 3/4".
- 5/8" Flat Panels (FP30P) are used as a filler under Quick Slope Panels for sloping more than a 30" distance. Dimensions: 30"x30"x5/8".
- 1" Flat Panels (FP30P1) are used as a filler for the shower pan area when setting the drain body 1" above the sub-floor. Dimensions: 30"x30"x1".
- Quick Slope and Flat Panels are made of polypropylene honeycomb with a compression strength of 230 p.s.i.
- Quick Slope Panels have a compression strength of over 1000 p.s.i. after filled with thinset.
- Quick Slope and Flat Panels can be cut with a utility knife.
- The QuickDrain sloping system can easily accommodate any size and shape shower pan. Single slope, perfectly flat pre-slope in under 1 hour.

ITEM #	SIZE	QTY
QS30P	30"x30" single sloped panel at 2% (1/4" per foot)	
FP30P	30"x30"x5/8" Flat panel	
FP30P1	30"x30"x1" Flat panel	

5. Outside Corners and Curb Form

- Outside corners are pre-formed molds of waterproofing membrane intended to hug angles created by outside corners.
- Curb forms are available in two sizes.

ITEM #	SIZE	QTY
QTSOC	QuickLiner TS Outside Corner	
CURB3	2-1/2" x 3-1/2" x 61" Curb Form	
CURB5	2-1/2" x 5" x 61" Curb Form	

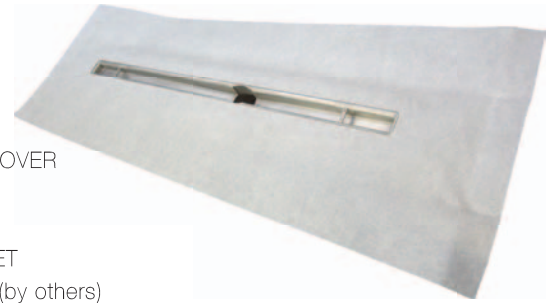
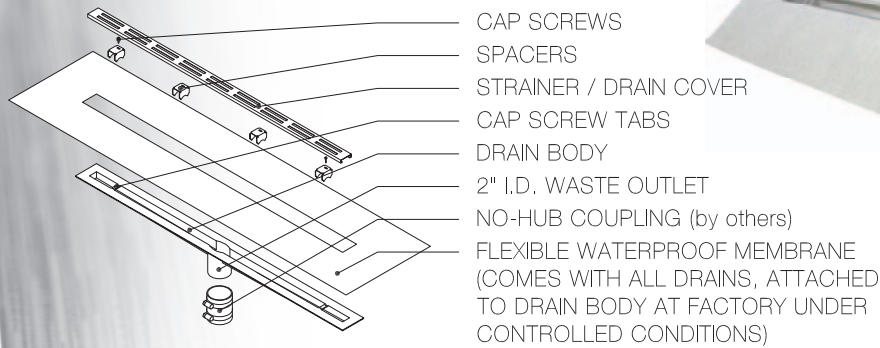
Refer to current price list for costs.

See web site for additional products, cut sheets, installation details and instructions.

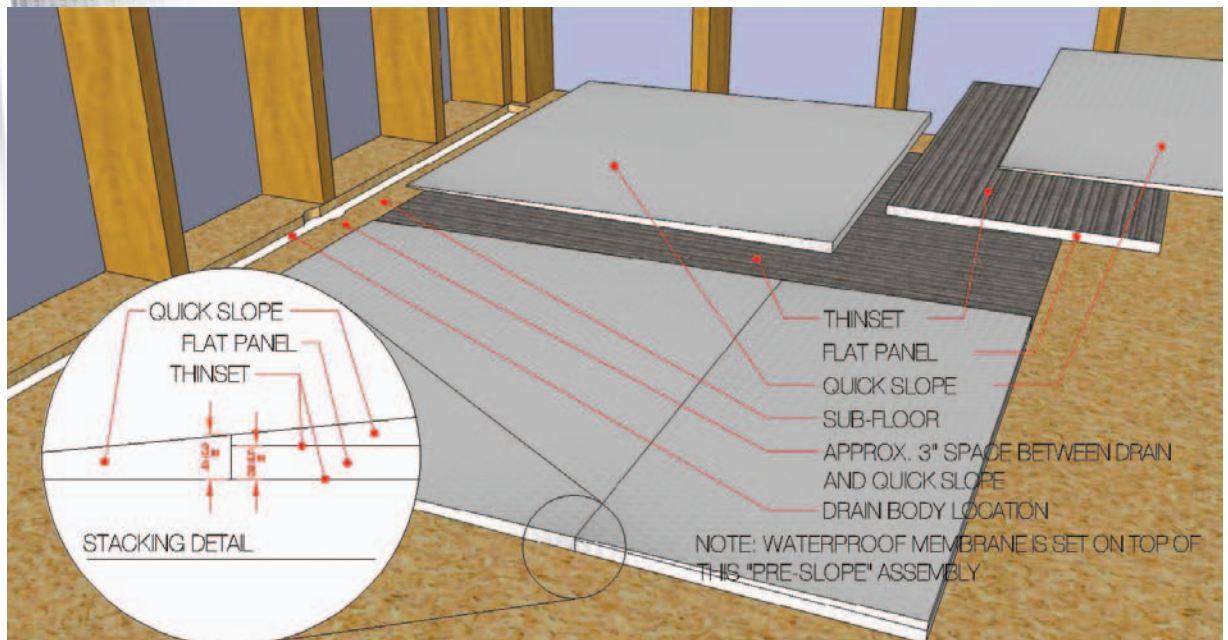
Call technical services for any product or installation questions: 970.668.0805 #5

Call customer service or sales for ordering assistance: 970.668.0805 #1 or #2

ProLine Drain Assembly

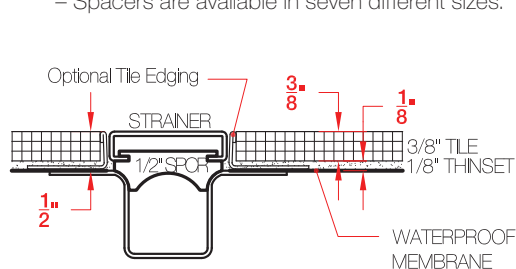


Setting Quick Slope and Flat Panel

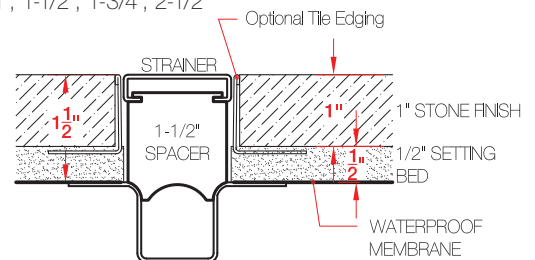


Determining Spacer Size – 2 Examples

- Spacers are devices that used to attach the strainer to the drain body and set the correct distance between the drain body flange and the top of the drain strainer. This is the same distance as the complete floor finish from waterproofing to top to finish, including setting bed.
- Spacers are available in seven different sizes: 1/2", 5/8", 3/4", 1", 1-1/2", 1-3/4", 2-1/2"



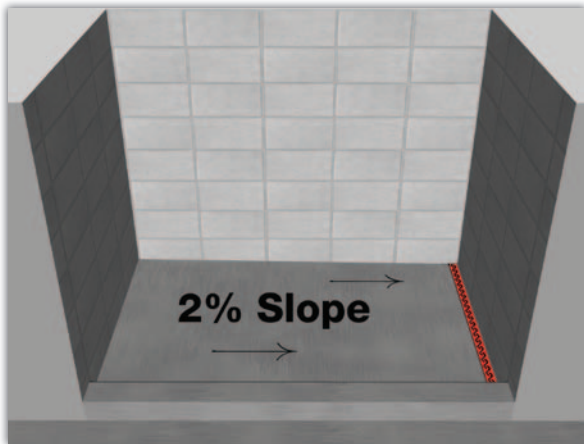
EXAMPLE 1: 1/2" SPACER - SECTION



EXAMPLE 2: 1-1/2" SPACER - SECTION

Suggested Materials for Common Showers

28" x 58" Curbed Tub to Shower Conversion



Drain Assembly:

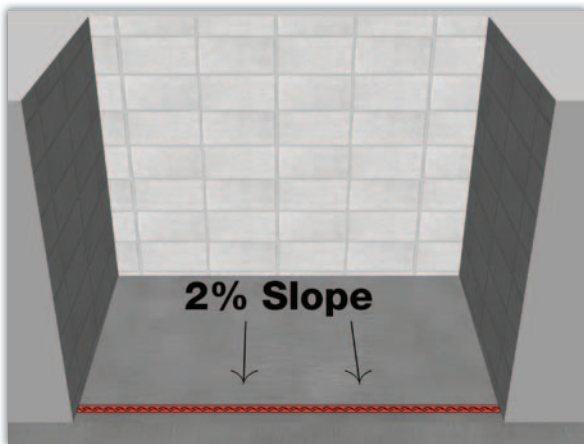
1-PLD26	Drain Body
1-STRAINER28	Strainer (specify pattern)
3-SP(size)	Spacers (specify size)

Shower Pan Accessories:

2-PLBSS	Placement Brackets
2-QS30P	30"x30" Quick Slope Panels
1-FP30P	30"x30"x5/8" Flat Panel
1-CURB3	Curb Form
1-QS007	Sealant
4'-QTS78	48"x78" Waterproof Membrane

Note: This drain is recessed into sub-floor and placed at the wall using the existing waste line from the pre-existing tub.

30" x 58" Curbless Tub to Shower Conversion



Drain Assembly:

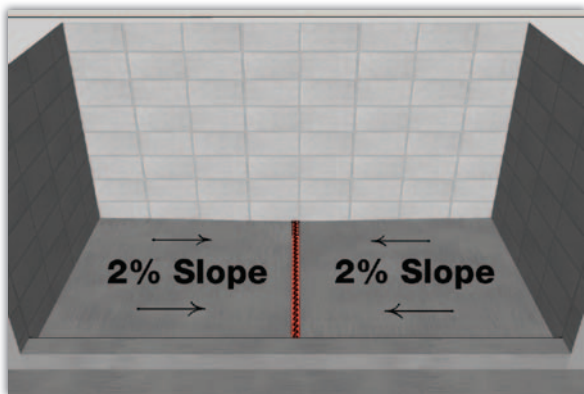
1-PLD57-58	Drain Body
1-WAVES58	Waves Pattern Strainer
5-SP(size)	Spacers (specify size)

Shower Pan Accessories:

2-PLBSS	Placement Brackets
2-QS30P	30"x30" Quick Slope
1-QS007	Sealant
6'-QTS39	72"x39" Waterproof Membrane

Note: This drain is recessed into sub-floor and the existing waste line is re-located. QuickDrain only recommends the WAVES pattern strainer and max. 5 g.p.m. when the drain is placed at the entry to a curbless shower.

44" x 96" Shower with Existing Centered Waste Line



Drain Assembly:

1-PLD44	Drain Body
1-STRAINER44	Strainer (specify pattern)
4-SP(size)	Spacers (specify size)

Shower Pan Accessories:

5-FP30P1	30"x30"x1" Flat Panel
6-QS30P	30"x30" Quick Slope
2-FP30P	30"x30"x5/8" Flat Panel
2-CURB3	Curb Form
1-QS007	Sealant
10'-QTS78	120"x78" Waterproof Membrane

Note: This drain is placed above the sub-floor using the existing waste line location.



beautiful
simple
fast
inexpensive
accessible





PROLINE[®] drain

by QUICKDRAIN USA™ 

866.998.6685 | quickdrainusa.com



101 West Main Street #206, P. O. Box 1358
Frisco, Colorado 80443-1358

T. 970.668.0805, 866.998.6685 | F. 866.357.8502