



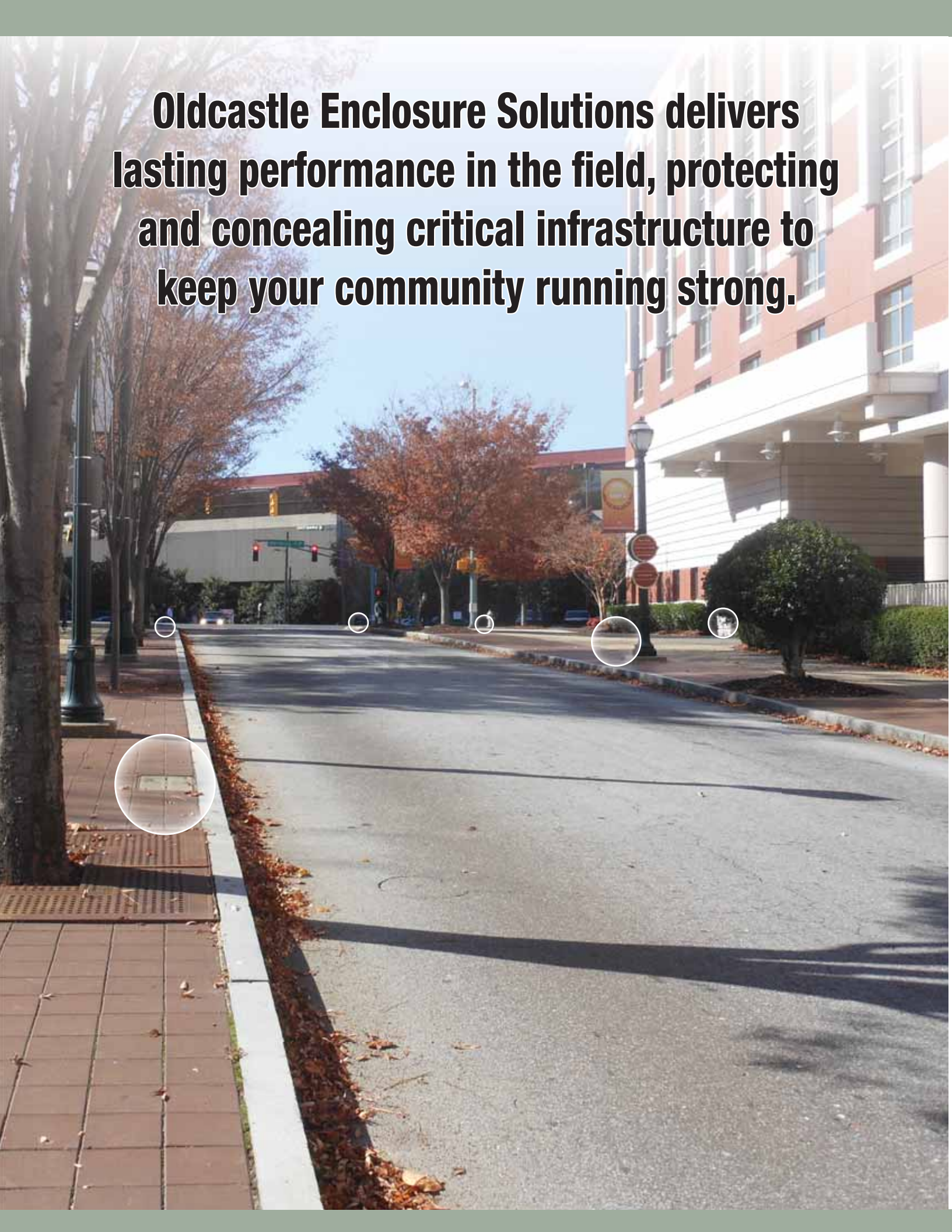
Irrigation Market Products

Order Guide

Effective May 18, 2012

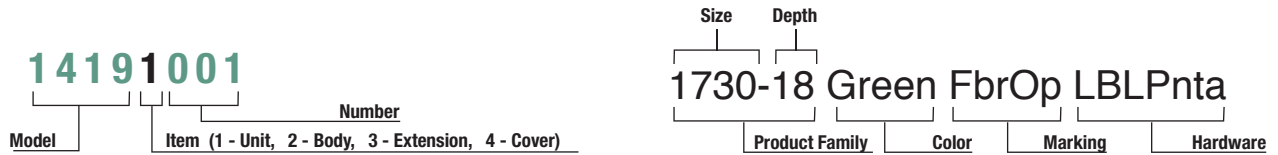
Version 2

Oldcastle Enclosure Solutions delivers lasting performance in the field, protecting and concealing critical infrastructure to keep your community running strong.

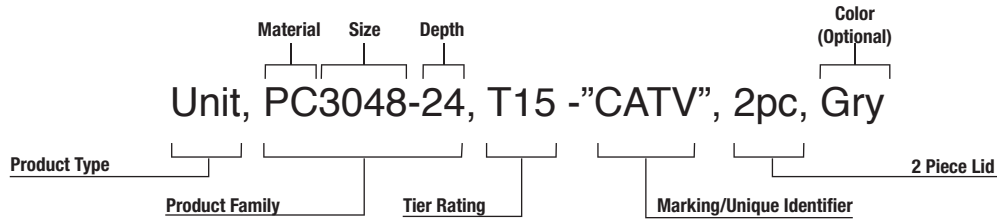


Understanding Our Product Guide

Carson Products: SKU Format and Description Format



H-Series & Synertech: Description Format



Carson Abbreviations

Abbreviation	Description	Refers to:	Abbreviation	Description	Refers to:
HP	HDPE Body Polymer Ring & Cover	Product Material	CHBit	Captive Hex Bolt	Hardware Type
HPC	Plastic Body Polymer Concrete Cover		CLPnta	Captive Large Penta Bolt	
HLPC	Plastic Body Light Weight Polymer Concrete Cover		Cpnta	Captive Penta Bolt	
PC	Polymer Concrete		Dlock	Dallas Lock	
PPC	Polymer Concrete Body Polymer Concrete Cover		Flick	Fargo Lock	
PSC	Polymer Concrete Body Steel Cover	FtnNut	Floating Nut		
Blk	Black	Product Color	HBit	Hex Bolt	
Blk-Grn	Black Body Green Cover		Hnut	Hex Nut	
Grn	Green		Bnut	Brass Nut	
Gry	Gray		LBit	L Bolt	
Pur	Purple		Lpnta	Large Penta Bolt	
Tan	Tan	CI T Cover	Cast Iron T Cover	Cover Type/Options	
Blank	Blank	Cast Iron Rdr	Cast Iron Reader		
Elec	Electric	Flsh Cvr	Flush Cover		
ICV	Irrigation Control Valve	Plastic Rdr	Plastic Reader		
Swr	Sewer	Plt Mkr	Plate Marker		
Wtr	Water	Rnd Plt	Round Plate		
Wtr Mtr	Water Meter	T Cov	T Cover		
RW	Reclaimed Water	EMS	E Marker		
RWDND ES	Reclaimed Water Do Not Drink English & Spanish	TRH	Touch Read Hole		
		MsHI	Mouse Hole		

H-Series Abbreviations

Abbreviation	Description	Refers to:
D	Drop In Lid	Lids
T	Bolt Down Lid	
FW	Flared Wall Body	Bodies
SW	Straight Wall Body	

Line Item Discount Chart

Line Item Discount	Product Group
OC01	Concrete
OC02	Drainage
OC03	HD - Polymer
OC04	Heavy Wall
OC06	LD - Plastic

Line Item Discount	Product Group
OC07	MD - SMC/HY
OC08	Other
OC09	Resale
OC10	Synertech
OC11	Fibrelyte
OC12	HVAC

Understanding Our Product Brands



HDPE enclosures are easy to install and provide strong, durable performance with water and chemical resistance.

Load Categories:



The R-Series is an extremely economical, high compression strength concrete material, which prevents lid and body chipping or cracking with a patented protective polypropylene ring guard on the lid and body.

Load Categories:



Carson Hybrids are specially designed to interchange various lid materials with a HDPE body to maximize load ratings and interior volume at a great overall installed value.

Load Categories:



Fibrelyte material is a proprietary composite designed to be lightweight, highly durable, and strong. Fibrelyte walls resist water impregnation when cut and modified in the field.

Load Categories:



Synertech enclosures combine the exceptional strength of High-Density Polymer Concrete with the lightweight properties of Sheet Molding Compound to produce a tough, durable enclosure. Synertech products are the strongest, lightest composite enclosures, making them easier and safer to install.

Load Categories:



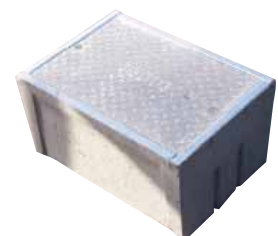
H-Series Polymer Concrete is produced using a precise dry mix of select aggregate, which is bound with resin and fiberglass fabric. Our new polymer concrete manufacturing process results in enclosures with high flexural and tensile strength, yet lower weight than traditional concrete.

Load Categories:



Christy concrete is reliable and cost effective. Boxes with a galvanized steel cover and frame in place are Traffic Rated.

Load Categories:



Selecting the Right Product and Accessories



Choose your Size and Brand

A wide variety of sizes are offered in round, square, and rectangular configurations. Choose the size and brand that best fits your need.



Know Your Required Performance Level

Our bodies and lids are rated for performance. Look for the load rating that matches your project application.



Select a Lid Style and Marking

Lids are available in a variety of materials and colors. Some are available with specialty markings, marking plates, and special locking options.



Choose Accessories, Hardware, and Other Options

Hardware & other additional items can be found for our enclosures in the back of this booklet.

Additional Information

For Christy® Brand products, please see the latest *Oldcastle Enclosure Solutions Christy Products Catalog*.

For more detailed information on a product, see the individual specification sheet located in the Oldcastle Enclosure Solutions Catalog Binder or online at oldcastleprecast.com/enclosuresolutions.



Available Sizes By Brand

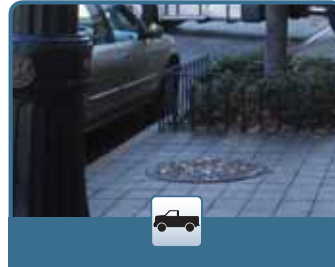
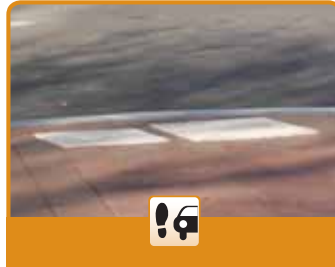
Select the appropriate size and shape for your application from our list of available products in each brand.

Brand	Material	Model	Size (LxW)	Shape	Wall Type	Depths	Design Load	Rating		
	HDPE	510	5" Dia	○	Flared ▽	9"	300 lb/ft ²	Ped		
		1012	10" x 12"	□		6" 10" 16"				
		708	6" Dia	○		9"				
		0011	10" Dia	○		10"				
		0012	14" x 20"	□		6" 12" 18"				
		809	6" Dia	○		9"				
		910	9" Dia	○		10" 18" 20" 36"				
		1015	10" x 15"	□		6" 12"				
		1419	14" x 19"	□		6" 12" 24"				
		1520	15" x 20"	□		18" 36"				
		1220	12" x 20"	□		6" 12" 18" 24"				
		1324	13" x 24"	□		12" 15" 24" 30"				
		1730	17" x 30"	□		12" 15" 18" 24" 36" 48"				
		2200	12" Dia	○		15" 18" 21" 30" 36"				
		2424	24" x 24"	□		18" 24" 30" 36" 42" 48" *				
		2436	24" x 36"	□		18" 24" 30" 36" 42" 48" *				
		2448	24" x 48"	□		18" 24" 30" 36" 42" 48" *				
		2460	24" x 60"	□		18" 24" 30" 36" 42" 48" *				
3636	36" x 36"	□	18" 24" 30" 36" 42" 48" *							
3648	36" x 48"	□	18" 24" 30" 36" 42" 48" *							
3660	36" x 60"	□	18" 24" 30" 36" 42" 48" *							
	Concrete	N09R	10" x 17"	□	Straight	12" 24" 36" 48" 60"	300 lb/ft ²	Ped		
		N16R	11" x 22"	□		12" 24" 36" 48" 60"				
		N30R	13" x 24"	□		12" 24" 36" 48" 60"				
		N36R	17" x 30"	□		12" 24" 36" 48" 60"				
		N40	24" x 36"	□		14" 24" 36" 48" 60"				
		N48	30" x 48"	□		14" 24" 36" 48" 60"				
		N52	30" x 60"	□		14" 24" 36" 48" 60"				
		F08	8" Dia	○		12"				
	Hybrid	1324	13" x 24"	□	Flared ▽	15" 18" 30" 36"	8,000 lbf	Tier 8		
		1730	17" x 30"	□		12" 15" 18" 24" 36" 48"				
		2424	24" x 24"	□		18" 24" 30" 36" 42" 48" *				
		2436	24" x 36"	□		18" 24" 30" 36" 42" 48" *				
		2448	24" x 48"	□		18" 24" 30" 36" 42" 48" *				
		2460	24" x 60"	□		18" 24" 30" 36" 42" 48" *				
		3636	36" x 36"	□		18" 24" 30" 36" 42" 48" *				
		3648	36" x 48"	□		18" 24" 30" 36" 42" 48" *				
3660	36" x 60"	□	18" 24" 30" 36" 42" 48" *							
	Composite	FL08	9" Dia	○	Flared ▽	12"	8,000 lbf	Tier 8		
		FL09	10" x 15"	□		12" 24"				
		FL12	12" x 20"	□		12" 24"				
		FL30	13" x 24"	□		12" 18" 24"				
		FL36	17" x 30"	□		12" 18" 24"				
	Composite	Duo 11x18	11" x 18"	□	Straight	12" 18" 24" 30" 36"	15,000 lbf	Tier 15		
		Duo 12x12	12" x 12"	□		12" 18" 24" 30" 36"				
		Duo 13x24	13" x 24"	□		12" 18" 24" 30" 36" 42"				
		Duo 17x30	17" x 30"	□		12" 18" 24" 30" 36" 42"				
		Duo 24x36	24" x 36"	□		18" 24" 36" 42" 48" 60"	22,500 lbf	Tier 22		
		Duo 30x48	30" x 48"	□		18" 24" 36" 42" 48" 60"				
		Duo 36x60	36" x 60"	□		24" 36" 48" 60" 72"				
	Polymer	910	9" Dia	○	Flared ▽	10"	15,000 lbf	Tier 15		
		1118	11" x 18"	□	Straight	12" 24"				
		1212	12" x 12"	□		12" 24" 36"				
		1324	13" x 24"	□	Flared ▽	12" 15" 18" 24" 30"				
		1324	13" x 24"	□		18"				
		1730	17" x 30"	□	Straight	12" 18" 24" 30" 36"				
		1730	17" x 30"	□		Flared ▽			18"	
		2424	24" x 24"	□	Straight				24" 36" 48" 60"	36,400 lbf
		2436	24" x 36"	□		18" 24" 36" 42"				
		3048	30" x 48"	□		18" 24" 36" 42" 48"				
		3060	36" x 60"	□		24" 30" 36" 48"				
		3636	36" x 36"	□		36" 48" 72" 84" 96"				
4848	48" x 48"	□	36" 48" 72" 84" 96"							
B1017	10" x 17"	□	Straight	12" 24" 36"						
B1324	13" x 24"	□		12" 24" 36"						
B1730	17" x 30"	□		12" 24" 36"						
B2436	24" x 36"	□		12" 24" 36"						
B3048	30" x 48"	□	12" 24" 36"							

* Models can be increased by 6" to a height you desire. **Tier 15 Design Load: 15,000 lbf Tier 22 Design Load: 22,500 lbf Blue - Stacked Body Units Orange - Extension Units



Performance Level and Load Ratings



Light Duty Pedestrian Only



Class Vehicle	GVW (lb)	Max Wheel Load (lb)	Design Load	Test Load	Specification	Load Category
Pedestrian	-	-	300 lb/ft ²	-	ASTM C 857	A-0.3
Pedestrian	-	-	-	3000 lbf	ANSI/SCTE 77	Light Duty, Pedestrian
Pedestrian	-	-	850 lb	2200 lb	Telcordia GR-902	Greenway
Passenger Vehicle	6000	2400	2000 lbf	4340 lbf	WUC, Guide 3.6	Ped.Greenway Category 1

Medium Duty Non-deliberate Traffic



Light Duty Truck, up to Class 3	14000	5600	5000	7500	ANSI/SCTE 77	Tier 5			
			8000	12000		Tier 8			
						3900	10400	Telcordia GR-902	Pedestrian/Light Duty Incidental
Medium Duty Truck, up to class 5	19500	7800	7800	20800	Telcordia GR-902	Non-Continuous Traffic			
						8000	17360	ASTM C 857	A-8
						8000	17360	WUC, Guide 3.6	Non-Continuous Traffic, Category 2
Medium Duty Truck, up to Class 7	33000	13200	15000	22500	ANSI/SCTE 77	Tier 15			

Heavy Duty Non-deliberate Traffic



Heavy Duty Truck, up to Class 8	40000	16000	16000	34720	ASTM C 857	A-16			
						22500	33750	ANSI/SCTE 77	Tier 22
						16000	34720	WUC, Guide 3.6	In shoulder or parking area outside traffic lane, Category 3

Traffic Rated Continuous Roadway Traffic



Vehicles up to Class 8	40000	16000	16000	45136	ASTM C 857	A-16
------------------------	-------	-------	-------	-------	------------	------

Traffic Rated products require steel covers to meet Traffic Rating Standards. Other cover options will meet Heavy Duty Standards.

LOAD RATINGS ARE DETERMINED BY THE LOWEST COMPONENT RATING

The Rural Utility Service (RUS) is a department of the US Department of Agriculture organized to facilitate rural developments. You will find Oldcastle Enclosure Solutions brand enclosures listed by the RUS. Please reference brand specific product data sheets for additional clarifications. All Oldcastle Enclosure Solutions brand enclosures conform to the RUS "Tamper Resistant" fastener design for buried pedestals found listed by code and group.

¹ The "Test Load" term is used in ANSI/ SCTE 77-2010 to designate the minimum load that an enclosure must be able to sustain to qualify for a particular performance rating. The term is synonymous with (minimum) Failure Load. It should be noted that within the ANSI/ SCTE 77-2010 specification, the "Test Load is 1.5 x the Design Load. Some specifications and Operating Companies select a higher multiple or Safety Factor for Proof of Design Load.



Lid Style and Markings

HDPE



Concrete



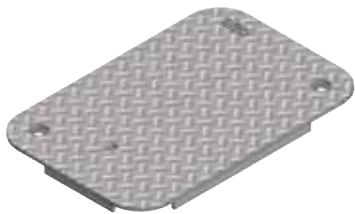
Composite



Polymer



Steel



Standard Markings

Lids are available with standard markings: Irrigation Control Valve, Reclaimed Water Do Not Drink, Water, Electric, Blank/No Mark.



Marking Plate

4" x 8" Plate

Standard marking includes two lines of one inch text with a max of thirteen characters per line.

Custom markings are available.

Contact Customer Service for detailed information.

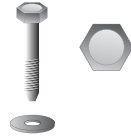


Security Options

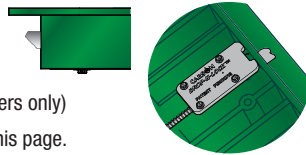
Enclosures come equipped with standard lid fastening hardware (varies per box type). Standard assembly is shown below.



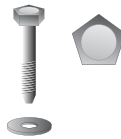
STANDARD HEX HEAD:
3/8 - 1/2 Stainless Steel Hex Head Bolt with Washer



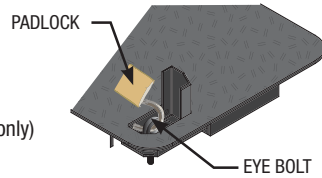
DROP-N-LOCK™:
Automatic locking system (available on select HDPE covers only) See detailed info section on this page.



STANDARD PENTA HEAD:
3/8 - 1/2 Stainless Penta Head Bolt with Washer



PADLOCK & EYE:
Eye bolt and padlock (available on steel covers only)



VANDAL PROOF:
Oldcastle Enclosures Vandal Proof bolt with specialty key.



Security Level	Typical Tool
Low	Fingers, Car Key, Pen Knife
Medium	Screwdriver, Hammer, Hacksaw, Pliers
High	Power Tools, Crowbar, Wedge, Hammer
Extreme	Sledge Hammer, Disc Grinder, Bolt Cutter

DROP-N-LOCK™ Tamper-resistant valve box

Our innovative DROP-N-LOCK valve box helps protect critical irrigation system components in public and private spaces. Repairs to vandalized systems can be costly.

The DROP-N-LOCK lid access point is not readily apparent, helping deter vandals and reduce maintenance issues.

- Discreet access point unlocks with common tools
- Audible locking engagement
- Built-in, weather-resistant stainless steel hardware
- Available in a variety of sizes



Specifications

To specify DROP-N-LOCK valve boxes in your next project, include the following language:

Locking mechanism shall provide audible locking confirmation upon closure. No exposed bolt or nut hardware allowed. Locking mechanism material is glass-filled co-polymer acetyl and metallic components. Use a #2 Phillips head screwdriver or our proprietary tool to disengage the locking feature. Covers 1324 size and larger feature dual locks and are bi-directional for installation. Unique key operator provides single motion keyed disengagement. The cover must comply with NEC wire probe safety provision.

HosEnclose™



HosEnclose™ Underground Garden Hose Storage System offers quick, convenient access to water and garden hose in a variety of settings. Handy near potted plants & flower beds for daily watering, hardscapes & patios for occasional cleaning, and driveways for washing vehicles. Easily installs in landscapes and wood patio decks.



ENCLOSURE:

Molded structural foam HDPE are rigid, strong, and durable. Tapered box design ideal for both turf and deck installations.

HOSE:

Fifty-foot commercial-grade polyurethane hose coils neatly inside the enclosure.



LID:

Hinged with recessed handle for easy access. Strong enough to withstand pedestrian and light incidental traffic when closed.

BUILT-IN-PLUMBING:

Quarter-turn (on or off) ball shut-off valve conveniently located inside the enclosure for easy access. Internal 3/4" PVC union connects easily to the water line.

FLOOR:

Molded polyethylene floor allows for excess water drainage and discourages pests from nesting inside.

NOZZLE:

High-quality brass "Fire Hose" nozzle allows for simple flow adjustment; resists breakage if dropped.

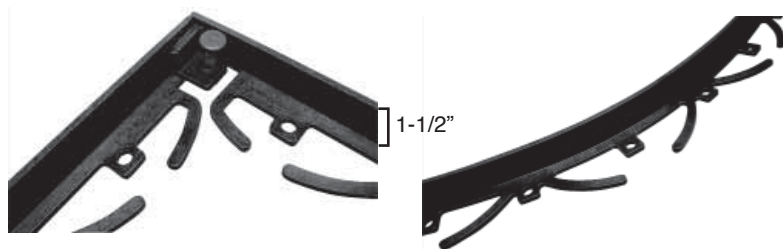
WARRANTY:

Limited One-Year Warranty on enclosure & hinged lid. Limited Six-Month Warranty on garden hose, nozzle, and internal plumbing components.

BUILDING CODES:

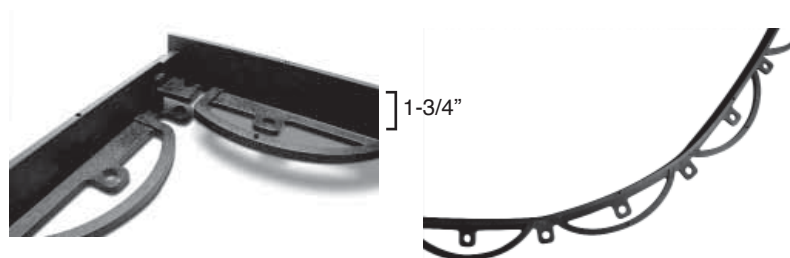
Installer must ensure all safety rules and applicable national & local building codes are observed during installation. Most existing irrigation systems include a backflow prevention device; however, for those that do not or for new systems, the Uniform Plumbing Code recommends installation of a backflow prevention device.

Landscape Edge™ and Paver Frame™



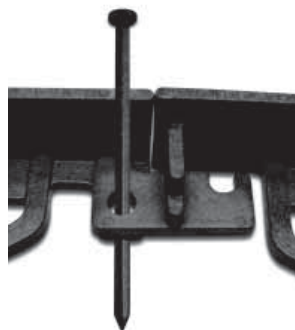
Landscape Edge

Define space in your lawn and garden with a crisp clean edge. Installation is easy and requires no digging. Will conform easily to virtually any shape to keep mulch, stone and landscape fabric in place.



Paver Frame

Makes any paver installation look like a professional installation. Designed for quick and easy installation, it secures your hardscapes while protecting its outer edges. Limits intrusion of other ground cover and prevents paver discoloration from direct contact with mulch.



Oldcastle® Spikes

Secure Landscape Edge and Paver Frame sections with these durable spikes. The glass-filled nylon design will not rust while withstanding exposure to extreme weather. Oldcastle Spikes are strong enough to nail through a 2x4 wood board.

Carson - 0510 Round

ResCom



Light Duty
Pedestrian Only



Pedestrian



RATING	Part#	Description 1	Description 2	Color	Depth	Item Weight	Pallet Qty	List Price	Line Item Discount	Design Load
Unit - 0510 ResCom										
Ped	05101001	510-09 Black Blank	2 MsHI T Cover	Black	9	1.2	500	\$12.00	OC06	300 lb/ft ²
	05101004	510-09 Tan Blank	2 MsHI T Cover	Tan	9	1.2	500	\$12.00	OC06	300 lb/ft ²
Body - 0510 ResCom										
Ped	05102001	510-09 Body Black 2 MsHI	-	Black	9	0.9	500	\$8.50	OC06	300 lb/ft ²
	05102002	510-09 Body Tan 2 MsHI	-	Tan	9	0.9	500	\$8.50	OC06	300 lb/ft ²
Lid - 0510 ResCom										
Ped	05104001	510 T Cover Black Blank	-	Black	-	0.4	1200	\$3.50	OC06	300 lb/ft ²
	05104004	510 T Cover Tan Blank	-	Tan	-	0.4	1200	\$3.50	OC06	300 lb/ft ²

Carson - 1012 Rectangular

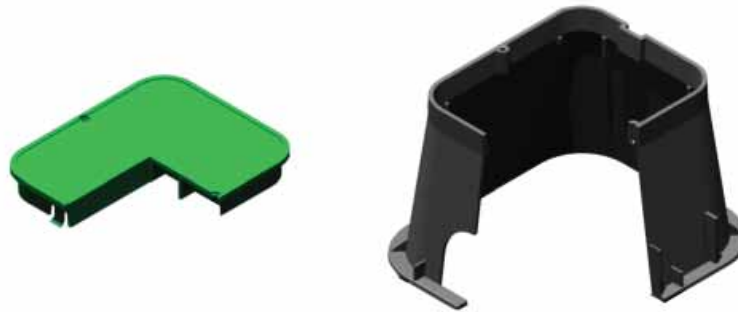
ResCom



Light Duty
Pedestrian Only



Pedestrian



RATING	Part#	Description 1	Description 2	Color	Depth	Item Weight	Pallet Qty	List Price	Line Item Discount	Design Load
Unit - 1012 ResCom										
Ped	10121001	1012-6x Blk-Grn ICV	0 MsHI T Cover	Blk-Grn	6	3.3	84	\$20.22	OC06	300 lb/ft ²
	10121002	1012-10 Blk-Grn ICV	2 MsHI T Cover	Blk-Grn	10	4.9	120	\$21.18	OC06	300 lb/ft ²
Body - 1012 ResCom										
P	10122001	1012-10 Body Black 2 MsHI	-	Black	10	3.2	120	\$15.92	OC06	300 lb/ft ²
Extension - 1012 ResCom										
P	10123001	1012-6 Ext Black	-	Black	6	1.7	240	\$11.59	OC06	300 lb/ft ²
Lid - 1012 ResCom										
P	10124001	1012 T Cover Green ICV	-	Green	-	1.6	240	\$9.03	OC06	300 lb/ft ²

Carson - 0708 Round

TrussT



Light Duty
Pedestrian Only



Pedestrian



RATING	Part#	Description 1	Description 2	Color	Depth	Item Weight	Pallet Qty	List Price	Line Item Discount	Design Load
--------	-------	---------------	---------------	-------	-------	-------------	------------	------------	--------------------	-------------

Unit - 0708 TrussT

Ped	07081001	708-09 Green ICV	2 MsHI T Cover Twist Lock	Green	9	1.0	540	\$3.82	OC06	300 lb/ft ²
	07081002	708-09 Blk-Grn ICV	2 MsHI T Cover Twist Lock	Blk-Grn	9	1.0	540	\$3.65	OC06	300 lb/ft ²
	07081005	708-09 Blk-Grn Blank	2 MsHI T Cover Twist Lock	Blk-Grn	9	1.0	540	\$4.61	OC06	300 lb/ft ²
	07081006	708-09 Black ICV	2 MsHI T Cover Twist Lock	Black	9	1.0	540	\$3.62	OC06	300 lb/ft ²
	07081007	708-09 Tan ICV	2 MsHI T Cover Twist Lock	Tan	9	1.0	540	\$3.93	OC06	300 lb/ft ²
	07081008	708-09 Purple RW	2 MsHI T Cover Twist Lock	Purple	9	1.0	540	\$3.96	OC06	300 lb/ft ²
	07081010	708-09 Green Blank	2 MsHI T Cover Twist Lock	Green	9	1.0	540	\$4.71	OC06	300 lb/ft ²
	07081023	708-09 Tan Blank	2 MsHI T Cover Twist Lock	Tan	9	1.0	540	\$4.71	OC06	300 lb/ft ²

Body - 0708 TrussT

Ped	07082001	708-09 Body Black 2 MsHI	-	Black	9	0.8	540	\$3.32	OC06	300 lb/ft ²
	07082002	708-09 Body Tan 2 MsHI	-	Tan	9	0.8	540	\$3.67	OC06	300 lb/ft ²
	07082003	708-09 Body Purple 2 MsHI	-	Purple	9	0.8	540	\$3.67	OC06	300 lb/ft ²
	07082005	708-09 Body Green 2 MsHI	-	Green	9	0.8	540	\$3.43	OC06	300 lb/ft ²

Lid - 0708 TrussT

Ped	07084019	708 T Cover Purple RW	Twist Lock	Purple	-	0.2	600	\$1.55	OC06	300 lb/ft ²
	07084020	708 T Cover Tan Blank	Twist Lock	Tan	-	0.2	600	\$1.55	OC06	300 lb/ft ²
	07084021	708 T Cover Tan ICV	Twist Lock	Tan	-	0.2	600	\$1.55	OC06	300 lb/ft ²
	07084023	708 T Cover Black Blank	Twist Lock	Black	-	0.2	600	\$1.56	OC06	300 lb/ft ²
	07084024	708 T Cover Black ICV	Twist Lock	Black	-	0.2	600	\$1.42	OC06	300 lb/ft ²
	07084025	708 T Cover Green Blank	Twist Lock	Green	-	0.2	600	\$1.56	OC06	300 lb/ft ²
	07084028	708 T Cover Green ICV	Twist Lock	Green	-	0.2	600	\$1.47	OC06	300 lb/ft ²

Carson - 0011 Round

TrussT



Light Duty
Pedestrian Only



Pedestrian



RATING	Part#	Description 1	Description 2	Color	Depth	Item Weight	Pallet Qty	List Price	Line Item Discount	Design Load
--------	-------	---------------	---------------	-------	-------	-------------	------------	------------	--------------------	-------------

Unit - 0011 TrussT

Ped	00111001	011-10 Green ICV	2 MsHI T Cover	Green	10	2.8	120	\$11.21	OC06	300 lb/ft ²
	00111002	011-10 Blk-Grn ICV	2 MsHI T Cover	Blk-Grn	10	2.8	120	\$10.40	OC06	300 lb/ft ²
	00111004	011-10 Purple RWDNDES	2 MsHI T Cover	Purple	10	2.8	120	\$13.10	OC06	300 lb/ft ²
	00111011	011-10 Green ICV	2 MsHI T Cover Twist-Lock	Green	10	2.8	120	\$11.21	OC06	300 lb/ft ²
	00111012	011-10 Blk-Grn ICV	2 MsHI T Cover Twist-Lock	Blk-Grn	10	2.8	120	\$10.40	OC06	300 lb/ft ²
	00111015	011-10 Purple RWDNDES	2 MsHI T Cover Twist-Lock	Purple	10	2.8	120	\$12.11	OC06	300 lb/ft ²

Body - 0011 TrussT

Ped	00112001	011-10 Body Green 2 MsHI	-	Green	10	2.0	120	\$7.81	OC06	300 lb/ft ²
	00112002	011-10 Body Black 2 MsHI	-	Black	10	2.0	120	\$6.57	OC06	300 lb/ft ²
	00112006	011-10 Body Green 2 MsHI	Twist-Lock	Green	10	2.0	120	\$7.81	OC06	300 lb/ft ²
	00112007	011-10 Body Black 2 MsHI	Twist-Lock	Black	10	2.0	120	\$6.56	OC06	300 lb/ft ²
	00112008	011-10 Body Purple 2 MsHI	Twist-Lock	Purple	10	2.0	120	\$7.09	OC06	300 lb/ft ²

Parting	Part#	Description 1	Description 2	Color	Depth	Item Weight	Pallet Qty	List Price	Line Item Discount	Design Load
Lid - 0011 TrussT										
Ped	00114001	011 T Cover Green ICV	-	Green	-	0.8	240	\$4.77	OC06	300 lb/ft ²
	00114011	011 T Cover Green ICV	Twist-Lock	Green	-	0.8	240	\$4.77	OC06	300 lb/ft ²
	00114014	011 T Cover Purple RWDNDES	Twist-Lock	Purple	-	0.8	240	\$4.85	OC06	300 lb/ft ²

Carson - 1015 Standard Rectangular TrussT

 **Light Duty**
Pedestrian Only

 **Pedestrian**



Parting	Part#	Description 1	Description 2	Color	Depth	Item Weight	Pallet Qty	List Price	Line Item Discount	Design Load
Unit - 1015 TrussT										
Ped	10151233	1015-07 Blk-Pur RWDNDES	0 MsHI T Cover	Blk-Pur	7	5.7	66	\$22.15	OC06	300 lb/ft ²
	10151234	1015-07 Blk-Grn ICV	0 MsHI T Cover	Blk-Grn	7	5.7	66	\$20.96	OC06	300 lb/ft ²
	10151235	1015-07 Tan ICV	0 MsHI T Cover	Tan	7	5.7	66	\$21.95	OC06	300 lb/ft ²
	10151236	1015-07 Grn ICV	0 MsHI T Cover	Green	7	5.7	66	\$21.26	OC06	300 lb/ft ²
	10151022	1015-12 Blk-Pur RWDNDES	216 MsHI T Cover	Blk-Pur	12	7.8	84	\$25.04	OC06	300 lb/ft ²
	10151088	1015-12 Blk-Grn ICV	216 MsHI T Cover	Blk-Grn	12	7.8	84	\$23.25	OC06	300 lb/ft ²
	10151089	1015-12 Green ICV	216 MsHI T Cover	Green	12	7.8	84	\$24.36	OC06	300 lb/ft ²
	10151092	1015-12 Blk-Pur RWDNDES	216 MsHI 0 Bit Prov T Cover	Blk-Pur	12	7.8	84	\$25.04	OC06	300 lb/ft ²
	10151232	1015-12 Purple RWDNDES	216 MsHI T Cover	Purple	12	7.8	84	\$29.57	OC06	300 lb/ft ²
	10151237	1015-12 Green Blank	216 MsHI T Cover	Green	12	7.8	84	\$24.36	OC06	300 lb/ft ²

Body - 1015 TrussT

Ped	10152024	1015-12 Body Green 2 MsHI	4 Knock Outs	Green	12	5.6	84	\$23.59	OC06	300 lb/ft ²
	10152026	1015-12 Body Black 2 MsHI	4 Knock Outs	Black	12	5.6	84	\$19.83	OC06	300 lb/ft ²
	10152030	1015-12 Body Purple 2 MsHI	4 Knock Outs	Purple	12	5.6	84	\$21.11	OC06	300 lb/ft ²
	10152032	1015-12 Body Black 0 MsHI	6 Knock Outs	Black	12	5.6	84	\$19.49	OC06	300 lb/ft ²

Extension - 1015 TrussT

Ped	10153004	1015-3 Ext Black	-	Black	3	2.5	54	\$19.88	OC06	300 lb/ft ²
	10153005	1015-6 Ext Black	-	Black	6	4.0	56	\$21.48	OC06	300 lb/ft ²
	10153010	1015-07 Body/ 6x Ext Black	-	Black	7	4.0	78	\$16.36	OC06	300 lb/ft ²

Lid - 1015 TrussT

Ped	10154010	1015 Flsh Cover Purple RWDNDES	-	Purple	-	2.1	200	\$12.13	OC06	300 lb/ft ²
	10154014	1015 Flsh Cover Green Blank	-	Green	-	2.1	200	\$11.56	OC06	300 lb/ft ²
	10154027	1015 T Cover Black Blank	-	Black	-	2.1	200	\$13.94	OC06	300 lb/ft ²
	10154069	1015 T Cover Green Blank	-	Green	-	2.1	200	\$11.65	OC06	300 lb/ft ²
	10154072	1015 T Cover Green ICV	-	Green	-	2.1	200	\$10.28	OC06	300 lb/ft ²
	10154073	1015 T Cover Purple RWDNDES	-	Purple	-	2.1	200	\$10.77	OC06	300 lb/ft ²

Carson - 0012 Jumbo Rectangular

TrussT



Light Duty
Pedestrian Only



Pedestrian



RATING	Part#	Description 1	Description 2	Color	Depth	Item Weight	Pallet Qty	List Price	Line Item Discount	Design Load
--------	-------	---------------	---------------	-------	-------	-------------	------------	------------	--------------------	-------------

Unit - 0012 TrussT

Ped	00121001	012-06R Blk-Grn ICV	0 MSHI T Cover	Blk-Grn	6	8.5	78	\$44.04	OC06	300 lb/ft ²
	00121002	012-6xR Blk-Grn ICV	0 MSHI T Cover	Blk-Grn	6	8.5	78	\$45.03	OC06	300 lb/ft ²
	00121003	012-12R Blk-Grn ICV	2 MSHI T Cover	Blk-Grn	12	13.7	36	\$48.99	OC06	300 lb/ft ²
	00121004	012-12R Purple RWDNDES	2 MSHI T Cover	Purple	12	13.7	36	\$64.50	OC06	300 lb/ft ²
	00121006	012-12R Green ICV	2 MSHI T Cover	Green	12	13.7	36	\$52.87	OC06	300 lb/ft ²

Body - 0012 TrussT

Ped	00122002	012-12R Body Black 2 MSHI	-	Black	12	8.5	36	\$34.86	OC06	300 lb/ft ²
	00122003	012-12R Body Green 2 MSHI	-	Green	12	8.5	36	\$36.61	OC06	300 lb/ft ²
	00122004	012-12R Body Purple 2 MSHI	-	Purple	12	8.5	36	\$42.53	OC06	300 lb/ft ²

Extension - 0012 TrussT

P	00123001	012-6R Ext Black	-	Black	6	3.6	42	\$27.63	OC06	300 lb/ft ²
---	----------	------------------	---	-------	---	-----	----	---------	------	------------------------

Lid - 0012 TrussT

Ped	00124001	012R T Cover Green ICV	-	Green	-	5.1	120	\$24.49	OC06	300 lb/ft ²
	00124003	012R T Cover Purple RWDNDES	-	Purple	-	5.1	120	\$25.43	OC06	300 lb/ft ²

Carson - 0809 Round Specification Grade



Light Duty
Pedestrian Only



Pedestrian



RATING	Part#	Description 1	Description 2	Color	Depth	Item Weight	Pallet Qty	List Price	Line Item Discount	Design Load
--------	-------	---------------	---------------	-------	-------	-------------	------------	------------	--------------------	-------------

Unit - 0809 Spec Grade

Ped	08091001	809-09 Green ICV	2 MSHI T Cover	Green	9	2.6	240	\$10.38	OC06	300 lb/ft ²
	08091003	809-09 Green Blank	2 MSHI T Cover	Green	9	2.6	240	\$11.66	OC06	300 lb/ft ²
	08091004	809-09 Blk-Grn ICV	2 MSHI T Cover	Blk-Grn	9	2.6	240	\$10.02	OC06	300 lb/ft ²
	08091008	809-09 Blk-Grn Blank	2 MSHI T Cover	Blk-Grn	9	2.6	240	\$11.39	OC06	300 lb/ft ²
	08091013	809-09 Tan ICV	2 MSHI T Cover	Tan	9	2.6	240	\$12.57	OC06	300 lb/ft ²
	08091014	809-09 Purple RCWDNDES	2 MSHI T Cover	Purple	9	2.6	240	\$10.90	OC06	300 lb/ft ²

Body - 0809 Spec Grade

Ped	08092001	809-09 Body Green 2 MSHI	-	Green	9	2.1	240	\$11.09	OC06	300 lb/ft ²
	08092002	809-09 Body Black 2 MSHI	-	Black	9	2.1	240	\$10.71	OC06	300 lb/ft ²
	08092003	809-09 Body Purple 2 MSHI	-	Purple	9	2.1	240	\$11.18	OC06	300 lb/ft ²
	08092005	809-09 Body Tan 2 MSHI	-	Tan	9	2.1	240	\$11.18	OC06	300 lb/ft ²

Lid - 0809 Spec Grade

Ped	08094001	809 T Cover Green ICV	-	Green	-	0.5	600	\$2.28	OC06	300 lb/ft ²
	08094003	809 T Cover Green Blank	-	Green	-	0.5	600	\$3.70	OC06	300 lb/ft ²
	08094004	809 T Cover Purple RCWDNDES	-	Purple	-	0.5	600	\$2.76	OC06	300 lb/ft ²
	08094005	809 T Cover Black ICV	-	Black	-	0.5	600	\$2.66	OC06	300 lb/ft ²
	08094013	809 T Cover Tan ICV	-	Tan	-	0.5	600	\$2.76	OC06	300 lb/ft ²

Carson - 0910 Round Specification Grade



Light Duty
Pedestrian Only



Pedestrian



RATING	Part#	Description 1	Description 2	Color	Depth	Item Weight	Pallet Qty	List Price	Line Item Discount	Design Load
--------	-------	---------------	---------------	-------	-------	-------------	------------	------------	--------------------	-------------

Unit - 0910 Spec Grade

	09101001	910-10 Green ICV	2 MsHI T Cover	Green	10	3.9	99	\$19.61	OC06	300 lb/ft ²
	09101005	910-10 Green Blank	0 MsHI T Cover	Green	10	3.9	99	\$22.90	OC06	300 lb/ft ²
	09101006	910-10 Black Blank HBlit	2 MsHI Flsh Cover	Black	10	3.9	99	\$26.21	OC06	300 lb/ft ²
	09101010	910-10 Green ICV HBlit	0 MsHI T Cover	Green	10	3.9	99	\$20.59	OC06	300 lb/ft ²
	09101015	910-10 Green Blank HBlit	0 MsHI T Cover	Green	10	3.9	99	\$25.03	OC06	300 lb/ft ²
	09101026	910-10 Green Blank	2 MsHI T Cover	Green	10	3.9	99	\$23.12	OC06	300 lb/ft ²
	09101027	910-10 Black ICV	2 MsHI T Cover	Black	10	3.9	99	\$19.58	OC06	300 lb/ft ²
	09101028	910-10 Tan ICV	2 MsHI T Cover	Tan	10	3.9	99	\$20.56	OC06	300 lb/ft ²
	09101029	910-10 Tan Blank	2 MsHI T Cover	Tan	10	3.9	99	\$30.03	OC06	300 lb/ft ²
	09101030	910-10 Purple RWDNDES	2 MsHI T Cover	Purple	10	3.9	99	\$21.13	OC06	300 lb/ft ²
	09101032	910-10 Green ICV	2 MsHI Flsh Cover	Green	10	3.9	99	\$23.54	OC06	300 lb/ft ²
	09101033	910-10 Black ICV	2 MsHI Flsh Cover	Black	10	3.9	99	\$19.59	OC06	300 lb/ft ²
	09101034	910-10 Green ICV HBlit	2 MsHI T Cover	Green	10	3.9	99	\$21.67	OC06	300 lb/ft ²
	09101037	910-10 Black ICV HBlit	2 MsHI T Cover	Black	10	3.9	99	\$21.01	OC06	300 lb/ft ²
	09101038	910-10 Tan ICV HBlit	2 MsHI T Cover	Tan	10	3.9	99	\$22.27	OC06	300 lb/ft ²
	09101042	910-10 Green ICV HBlit	2 MsHI Flsh Cover	Green	10	3.9	99	\$26.00	OC06	300 lb/ft ²
	09101043	910-10 Purple RWDNDES HBlit	2 MsHI T Cover	Purple	10	3.9	99	\$22.67	OC06	300 lb/ft ²
	09101074	910-10 Purple Blank HBlit	2 MsHI T Cover	Purple	10	3.9	99	\$29.74	OC06	300 lb/ft ²
	09101078	910-10 Black Blank HBlit	2 MsHI T Cover	Black	10	3.9	99	\$28.84	OC06	300 lb/ft ²

Body - 0910 Spec Grade

	09102001	910-10 Body Green 0 MsHI	-	Green	10	2.7	99	\$16.86	OC06	300 lb/ft ²
	09102002	910-10 Body Black 0 MsHI	-	Black	10	2.7	99	\$16.52	OC06	300 lb/ft ²
	09102004	910-10 Body Purple 0 MsHI	-	Purple	10	2.7	99	\$18.03	OC06	300 lb/ft ²
	09102006	910-10 Body Green 2 MsHI	-	Green	10	2.7	99	\$16.36	OC06	300 lb/ft ²
	09102007	910-10 Body Black 2 MsHI	-	Black	10	2.7	99	\$16.33	OC06	300 lb/ft ²
	09102008	910-10 Body Purple 2 MsHI	-	Purple	10	2.7	99	\$17.57	OC06	300 lb/ft ²
	09102014	910-10 Body Tan 0 MsHI	-	Tan	10	2.7	99	\$15.28	OC06	300 lb/ft ²
	09102017	910-10 Body Tan 2 MsHI	-	Tan	10	2.7	99	\$17.57	OC06	300 lb/ft ²

Lid - 0910 Spec Grade

	09104001	910 T Cover Green ICV	-	Green	-	1.2	250	\$7.05	OC06	300 lb/ft ²
	09104007	910 T Cover Green Blank	-	Green	-	1.2	250	\$7.35	OC06	300 lb/ft ²
	09104008	910 T Cover Black ICV	-	Black	-	1.2	250	\$6.36	OC06	300 lb/ft ²
	09104012	910 T Cover Black Blank	-	Black	-	1.2	250	\$8.67	OC06	300 lb/ft ²
	09104013	910 T Cover Tan ICV	-	Tan	-	1.2	250	\$7.52	OC06	300 lb/ft ²
	09104014	910 T Cover Tan Blank	-	Tan	-	1.2	250	\$8.51	OC06	300 lb/ft ²
	09104015	910 T Cover Purple RWDNDES	-	Purple	-	1.2	250	\$7.52	OC06	300 lb/ft ²
	09104017	910 T Cover Purple Blank	-	Purple	-	1.2	250	\$8.95	OC06	300 lb/ft ²
	09104024	910 Fish Cover Green ICV	-	Green	-	1.0	250	\$8.48	OC06	300 lb/ft ²
	09104025	910 Fish Cover Black ICV	-	Black	-	1.0	250	\$6.36	OC06	300 lb/ft ²
	09104026	910 Fish Cover Green Blank	-	Green	-	1.0	250	\$8.68	OC06	300 lb/ft ²

Carson - 1419 Standard Rectangular Specification Grade

1419



Light Duty
Pedestrian Only



Pedestrian



RATING	Part#	Description 1	Description 2	Color	Depth	Item Weight	Pallet Qty	List Price	Line Item Discount	Design Load
--------	-------	---------------	---------------	-------	-------	-------------	------------	------------	--------------------	-------------

Unit - 1419 Spec Grade

Ped	14191001	1419-06 Green ICV	0 MSHI T Cover	Green	6	6.6	90	\$32.87	OC06	300 lb/ft ²
	14191002	1419-6x Green ICV	0 MSHI T Cover	Green	6	6.6	90	\$32.87	OC06	300 lb/ft ²
	14191003	1419-6x Tan ICV	0 MSHI T Cover	Tan	6	6.6	90	\$33.89	OC06	300 lb/ft ²
	14191004	1419-06 Green ICV HBlit	0 MSHI T Cover	Green	6	6.6	90	\$34.68	OC06	300 lb/ft ²
	14191005	1419-6x Green ICV HBlit	0 MSHI T Cover	Green	6	6.6	90	\$34.68	OC06	300 lb/ft ²
	14191006	1419-6x Tan ICV HBlit	0 MSHI T Cover	Tan	6	6.6	90	\$35.76	OC06	300 lb/ft ²
	14191007	1419-12 Green ICV	0 MSHI T Cover	Green	12	9.7	78	\$34.83	OC06	300 lb/ft ²
	14191008	1419-12 Green Blank	0 MSHI T Cover	Green	12	9.7	78	\$41.19	OC06	300 lb/ft ²
	14191010	1419-12 Green ICV HBlit	0 MSHI T Cover	Green	12	9.7	78	\$36.34	OC06	300 lb/ft ²
	14191014	1419-12 Green Blank HBlit	0 MSHI T Cover	Green	12	9.7	78	\$42.76	OC06	300 lb/ft ²
	14191020	1419-12 Green ICV	2 MSHI T Cover	Green	12	9.7	78	\$34.83	OC06	300 lb/ft ²
	14191021	1419-12 Green ICV	2 MSHI Flsh Cover	Green	12	9.7	78	\$34.83	OC06	300 lb/ft ²
	14191024	1419-12 Green Blank	2 MSHI T Cover	Green	12	9.7	78	\$39.05	OC06	300 lb/ft ²
	14191025	1419-12 Black ICV	2 MSHI T Cover	Black	12	9.7	78	\$34.07	OC06	300 lb/ft ²
	14191026	1419-12 Tan ICV	2 MSHI T Cover	Tan	12	9.7	78	\$36.25	OC06	300 lb/ft ²
	14191027	1419-12 Purple RWDNDES	2 MSHI T Cover	Purple	12	9.7	78	\$36.91	OC06	300 lb/ft ²
	14191034	1419-12 Green ICV HBlit	2 MSHI T Cover	Green	12	9.7	78	\$36.50	OC06	300 lb/ft ²
	14191037	1419-12 Green Blank HBlit	2 MSHI T Cover	Green	12	9.7	78	\$37.43	OC06	300 lb/ft ²
	14191038	1419-12 Black ICV HBlit	2 MSHI T Cover	Black	12	9.7	78	\$34.78	OC06	300 lb/ft ²
	14191039	1419-12 Tan ICV HBlit	2 MSHI T Cover	Tan	12	9.7	78	\$37.60	OC06	300 lb/ft ²
	14191040	1419-12 Purple RWDNDES HBlit	2 MSHI T Cover	Purple	12	9.7	78	\$36.91	OC06	300 lb/ft ²

Unit - 1419 Spec Grade with Drop-N-Lock Lid

Ped	14191422	1419-12 Green ICV	0 MSHI 1x DNL	Green	12	9.9	78	\$36.99	OC06	300 lb/ft ²
	14191423	1419-12 Black ICV	2 MSHI T Cover 1x DNL	Black	12	9.9	78	\$36.99	OC06	300 lb/ft ²
	14191425	1419-12 Green Blank	1x DNL T Cover	Green	12	9.9	78	\$55.27	OC06	300 lb/ft ²

Body - 1419 Spec Grade

Ped	14192002	1419-12 Body Green 0 MSHI	-	Green	12	7.0	78	\$29.62	OC06	300 lb/ft ²
	14192004	1419-12 Body Green 2 MSHI	-	Green	12	7.0	78	\$29.62	OC06	300 lb/ft ²
	14192005	1419-12 Body Black 2 MSHI	-	Black	12	7.0	78	\$28.69	OC06	300 lb/ft ²
	14192006	1419-12 Body Tan 2 MSHI	-	Tan	12	7.0	78	\$30.54	OC06	300 lb/ft ²
	14192009	1419-12 Body Black 0 MSHI	-	Black	12	7.0	78	\$28.69	OC06	300 lb/ft ²
	14192014	1419-12 Body Purple 2 MSHI	-	Purple	12	7.0	78	\$31.10	OC06	300 lb/ft ²
	14192024	1419-12 Body Tan 0 MSHI	-	Tan	12	7.0	78	\$30.54	OC06	300 lb/ft ²
	14192027	1419-12 Body Purple 0 MSHI	-	Purple	12	7.0	78	\$31.10	OC06	300 lb/ft ²
	14192011	1419-24 Body Black 2 MSHI	-	Black	24	15.2	48	\$57.32	OC06	300 lb/ft ²

Extension - 1419 Spec Grade

Ped	14193001	1419-6 Ext Green	-	Green	6	4.0	54	\$25.88	OC06	300 lb/ft ²
	14193002	1419-6 Ext Black	-	Black	6	4.0	54	\$25.11	OC06	300 lb/ft ²
	14193003	1419-6 Ext Tan	-	Tan	6	4.0	54	\$27.89	OC06	300 lb/ft ²
	14193006	1419-6 Ext Purple	-	Purple	6	4.0	54	\$32.58	OC06	300 lb/ft ²

Lid - 1419 Spec Grade

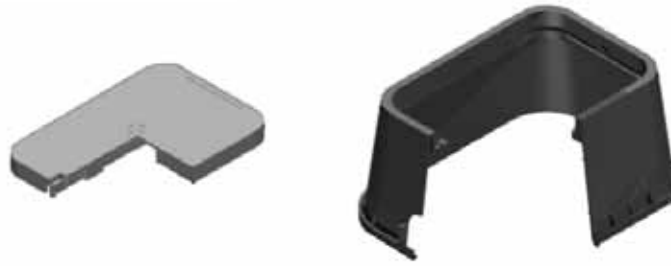
Ped	14194001	1419 T Cover Green ICV	-	Green	-	2.7	200	\$10.84	OC06	300 lb/ft ²
	14194005	1419 T Cover Green Blank	-	Green	-	2.7	200	\$15.73	OC06	300 lb/ft ²
	14194006	1419 T Cover Black ICV	-	Black	-	2.7	200	\$10.60	OC06	300 lb/ft ²
	14194009	1419 T Cover Tan ICV	-	Tan	-	2.7	200	\$11.28	OC06	300 lb/ft ²
	14194010	1419 T Cover Purple RWDNDES	-	Purple	-	2.7	200	\$11.47	OC06	300 lb/ft ²
	14194013	1419 Flsh Cover Green ICV	-	Green	-	2.2	200	\$10.94	OC06	300 lb/ft ²
	14194016	1419 Flsh Cover Purple RWDNDES	-	Purple	-	2.2	200	\$13.28	OC06	300 lb/ft ²
	14194051	1419 T Cover Tan Blank	-	Tan	-	2.7	200	\$15.15	OC06	300 lb/ft ²
	14194060	1419 Flsh Cover Black ICV	-	Black	-	2.2	200	\$10.59	OC06	300 lb/ft ²
	14194088	1419 T Cover Green RCWDNDES	-	Green	-	2.7	200	\$10.75	OC06	300 lb/ft ²

Lid - 1419 Spec Grade with Drop-N-Lock Feature

Ped	14194323	1419 T Cover Green Blank	1x DNL	Green	-	2.4	200	\$21.55	OC06	300 lb/ft ²
	14194327	1419 T Cover Black Blank	1x DNL	Black	-	2.4	200	\$21.55	OC06	300 lb/ft ²
	14194328	1419 T Cover Green ICV	1x DNL	Green	-	2.4	200	\$14.42	OC06	300 lb/ft ²
	14194329	1419 T Cover Black ICV	1x DNL	Black	-	2.4	200	\$14.42	OC06	300 lb/ft ²

CARSON

Carson - 1220 Jumbo Rectangular
Specification Grade



Part#	Description 1	Description 2	Color	Depth	Item Weight	Pallet Qty	List Price	Line Item Discount	Design Load
-------	---------------	---------------	-------	-------	-------------	------------	------------	--------------------	-------------

Unit - 1220 Spec Grade

12201001	1220-06 Green ICV	0 MSHI T Cover	Green	6	10.7	60	\$55.62	OC06	300 lb/ft ²
12201002	1220-6x Green ICV	0 MSHI T Cover	Green	6	10.7	60	\$55.62	OC06	300 lb/ft ²
12201003	1220-6x Tan ICV	0 MSHI T Cover	Tan	6	10.7	60	\$57.35	OC06	300 lb/ft ²
12201006	1220-6x Green ICV HBlit	0 MSHI T Cover	Green	6	10.7	60	\$57.65	OC06	300 lb/ft ²
12201007	1220-6x Tan ICV HBlit	0 MSHI T Cover	Tan	6	10.7	60	\$59.45	OC06	300 lb/ft ²
12201014	1220-12 Green ICV	2 MSHI T Cover	Green	12	15.0	48	\$64.20	OC06	300 lb/ft ²
12201017	1220-12 Tan ICV	2 MSHI T Cover	Tan	12	15.0	48	\$66.65	OC06	300 lb/ft ²
12201020	1220-12 Green ICV	2 MSHI Fish Cover	Green	12	15.0	48	\$64.20	OC06	300 lb/ft ²
12201021	1220-12 Green ICV HBlit	2 MSHI T Cover	Green	12	15.0	48	\$66.30	OC06	300 lb/ft ²
12201022	1220-12 Green Blank HBlit	2 MSHI T Cover	Green	12	15.0	48	\$88.48	OC06	300 lb/ft ²
12201024	1220-12 Tan ICV HBlit	2 MSHI T Cover	Tan	12	15.0	48	\$68.23	OC06	300 lb/ft ²
12201028	1220-12 Black ICV	2 MSHI T Cover	Black	12	15.0	48	\$62.40	OC06	300 lb/ft ²
12201029	1220-12 Black ICV	2 MSHI Fish Cover	Black	12	15.0	48	\$74.88	OC06	300 lb/ft ²
12201030	1220-12 Black ICV HBlit	2 MSHI T Cover	Black	12	15.0	48	\$76.62	OC06	300 lb/ft ²
12201034	1220-12 Green Blank	2 MSHI Fish Cover	Green	12	15.0	48	\$72.05	OC06	300 lb/ft ²
12201040	1220-12 Green ICV LBlit	2 MSHI Fish Cover	Green	12	15.0	48	\$65.09	OC06	300 lb/ft ²
12201064	1220-12 Black Blank	0 MSHI T Cover	Black	12	15.0	48	\$85.60	OC06	300 lb/ft ²
12201070	1220-12 Purple RWDNDES HBlit	2 MSHI T Cover	Purple	12	15.0	48	\$75.88	OC06	300 lb/ft ²
12201090	1220-12 Purple RWDNDES	2 MSHI T Cover	Purple	12	15.0	48	\$67.87	OC06	300 lb/ft ²
12201203	1220-12 Green Blank HBlit	0 MSHI T Cover	Green	12	15.0	48	\$66.93	OC06	300 lb/ft ²

Unit - 1220 Spec Grade with Drop-N-Lock Lid

12201205	1220-6x Green ICV	1x DNL T Cover	Green	6	10.1	28	\$58.57	OC06	300 lb/ft ²
12201206	1220-12 Green ICV	2 MSHI 1x DNL T Cover	Green	12	13.5	48	\$67.22	OC06	300 lb/ft ²
12201207	1220-12 Tan ICV	2 MSHI 1x DNL T Cover	Tan	12	13.5	48	\$67.22	OC06	300 lb/ft ²
12201208	1220-12 Purple RWDNDES	2 MSHI 1x DNL T Cover	Purple	12	13.5	48	\$67.22	OC06	300 lb/ft ²

Body - 1220 Spec Grade

12202001	1220-06 Body Green 0 MSHI	-	Green	6	6.5	60	\$41.30	OC06	300 lb/ft ²
12202002	1220-12 Body Green 0 MSHI	-	Green	12	9.3	48	\$48.07	OC06	300 lb/ft ²
12202004	1220-12 Body Green 2 MSHI	-	Green	12	9.3	48	\$54.61	OC06	300 lb/ft ²
12202005	1220-12 Body Black 2 MSHI	-	Black	12	9.3	48	\$54.61	OC06	300 lb/ft ²
12202006	1220-12 Body Tan 2 MSHI	-	Tan	12	9.3	48	\$56.21	OC06	300 lb/ft ²
12202007	1220-12 Body Black 0 MSHI	-	Black	12	9.3	48	\$53.51	OC06	300 lb/ft ²
12202012	1220-12 Body Purple 0 MSHI	-	Purple	12	9.3	48	\$68.68	OC06	300 lb/ft ²
12202017	1220-12 Body Purple 2 MSHI	-	Purple	12	9.3	48	\$57.24	OC06	300 lb/ft ²

Extension - 1220 Spec Grade

12203001	1220-6 Ext Green	-	Green	6	6.5	32	\$42.05	OC06	300 lb/ft ²
12203002	1220-6 Ext Black	-	Black	6	6.5	32	\$40.54	OC06	300 lb/ft ²
12203003	1220-6 Ext Tan	-	Tan	6	6.5	32	\$43.37	OC06	300 lb/ft ²
12203006	1220-6 Ext Purple	-	Purple	6	6.5	32	\$52.05	OC06	300 lb/ft ²

Lid - 1220 Spec Grade

12204001	1220 T Cover Green ICV	-	Green	-	4.7	150	\$20.85	OC06	300 lb/ft ²
12204003	1220 T Cover Green Blank	-	Green	-	4.7	150	\$23.63	OC06	300 lb/ft ²
12204004	1220 T Cover Tan ICV	-	Tan	-	4.7	150	\$21.92	OC06	300 lb/ft ²
12204008	1220 Fish Cover Green ICV	-	Green	-	4.5	150	\$20.85	OC06	300 lb/ft ²
12204010	1220 T Cover Black Blank	-	Black	-	4.7	150	\$28.04	OC06	300 lb/ft ²
12204012	1220 T Cover Black ICV	-	Black	-	4.7	150	\$23.64	OC06	300 lb/ft ²
12204013	1220 Fish Cover Black ICV	-	Black	-	4.5	150	\$23.84	OC06	300 lb/ft ²
12204016	1220 Fish Cover Green Blank	-	Green	-	4.5	150	\$28.87	OC06	300 lb/ft ²
12204019	1220 Fish Cover Green ICV	L Bolt	Green	-	4.5	150	\$26.00	OC06	300 lb/ft ²
12204028	1220 Fish Cover Purple RWDNDES	-	Purple	-	4.5	150	\$32.43	OC06	300 lb/ft ²
12204044	1220 Fish Cover Green Blank	L Bolt	Green	-	4.5	150	\$31.50	OC06	300 lb/ft ²
12204050	1220 T Cover Green ICV	L Bolt	Green	-	4.7	150	\$22.13	OC06	300 lb/ft ²
12204069	1220 T Cover Purple RWDNDES	-	Purple	-	4.7	150	\$25.27	OC06	300 lb/ft ²

Lid - 1220 Spec Grade with Drop-N-Lock Feature

12204176	1220 T Cover Green ICV	1x DNL	Green	-	4.7	150	\$22.64	OC06	300 lb/ft ²
12204177	1220 T Cover Tan ICV	1x DNL	Tan	-	4.7	150	\$22.64	OC06	300 lb/ft ²
12204178	1220 T Cover Purple RWDNDES	1x DNL	Purple	-	4.7	150	\$34.18	OC06	300 lb/ft ²

Carson - 1324 Super Jumbo Rectangular Specification Grade

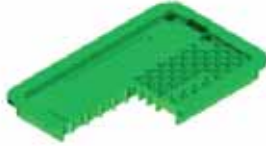
1324



Light Duty
Pedestrian Only



Pedestrian



Part#	Description 1	Description 2	Color	Depth	Item Weight	Pallet Qty	List Price	Line Item Discount	Design Load
-------	---------------	---------------	-------	-------	-------------	------------	------------	--------------------	-------------

Unit - 1324 Spec Grade

13241001	1324-12 Green ICV HBlit	0 MsHI Fish Cover	Green	12	20.4	16	\$136.91	OC06	300 lb/ft ²
13241002	1324-12 Green ICV LBlit	0 MsHI Fish Cover	Green	12	20.4	16	\$138.52	OC06	300 lb/ft ²
13241004	1324-12 Green Blank HBlit	0 MsHI Fish Cover	Green	12	20.4	16	\$142.61	OC06	300 lb/ft ²
13241034	1324-12 Black Blank HBlit	0 MsHI T Cover	Black	12	20.4	16	\$164.27	OC06	300 lb/ft ²
13241039	1324-12 Black ICV HBlit	0 MsHI Fish Cover	Black	12	20.4	16	\$136.11	OC06	300 lb/ft ²
13241082	1324-12 Purple RWDNDES LBlit	0 MsHI Fish Cover	Purple	12	20.4	16	\$172.35	OC06	300 lb/ft ²
13241084	1324-12 Tan ICV LBlit	0 MsHI Fish Cover	Tan	12	20.4	16	\$176.38	OC06	300 lb/ft ²
13241085	1324-12 Purple RWDNDES HBlit	0 MsHI Fish Cover	Purple	12	20.4	16	\$171.54	OC06	300 lb/ft ²
13241281	1324-12 Purple RWDNDES HBlit	0 MsHI T Cover	Purple	12	20.4	16	\$142.56	OC06	300 lb/ft ²
13241006	1324-15 Green ICV HBlit	0 MsHI Fish Cover	Green	15	23.1	16	\$145.78	OC06	300 lb/ft ²
13241007	1324-15 Green ICV LBlit	0 MsHI Fish Cover	Green	15	23.1	16	\$147.39	OC06	300 lb/ft ²
13241008	1324-15 Green ICV LBlit	0 MsHI T Cover	Green	15	23.1	16	\$147.39	OC06	300 lb/ft ²
13241040	1324-15 Black ICV LBlit	0 MsHI Fish Cover	Black	15	23.1	16	\$167.52	OC06	300 lb/ft ²
13241041	1324-15 Black ICV HBlit	0 MsHI Fish Cover	Black	15	23.1	16	\$166.71	OC06	300 lb/ft ²
13241043	1324-15 Green ICV HBlit	0 MsHI T Cover	Green	15	23.1	16	\$145.78	OC06	300 lb/ft ²
13241083	1324-15 Tan ICV HBlit	0 MsHI Fish Cover	Tan	15	23.1	16	\$185.23	OC06	300 lb/ft ²
13241086	1324-15 Purple RWDNDES LBlit	0 MsHI Fish Cover	Purple	15	23.1	16	\$182.01	OC06	300 lb/ft ²
13241154	1324-15 Black ICV HBlit	0 MsHI T Cover	Black	15	23.1	16	\$166.71	OC06	300 lb/ft ²

Unit - 1324 Spec Grade with Drop-N-Lock Lid

13241279	1324-12 Blk-Grn Blank	0 MsHI T Cover 2x DNL	Blk-Grn	12	22.0	16	\$143.74	OC06	300 lb/ft ²
13241280	1324-15 Blk-Grn Blank	2x DNL T Cover	Blk-Grn	15	22.0	16	\$157.27	OC06	300 lb/ft ²

Body - 1324 Spec Grade

13242001	1324-12 Body Green 0 MsHI	-	Green	12	14.5	16	\$106.51	OC06	300 lb/ft ²
13242014	1324-12 Body Tan 0 MsHI	-	Tan	12	14.5	16	\$109.21	OC06	300 lb/ft ²
13242015	1324-12 Body Purple 0 MsHI	-	Purple	12	14.5	16	\$131.79	OC06	300 lb/ft ²
13242019	1324-12 Body Black 0 MsHI	-	Black	12	14.5	16	\$106.51	OC06	300 lb/ft ²
13242002	1324-15 Body Green 0 MsHI	-	Green	15	16.8	16	\$120.04	OC06	300 lb/ft ²
13242004	1324-15 Body Black 0 MsHI	-	Black	15	16.8	16	\$120.04	OC06	300 lb/ft ²
13242018	1324-15 Body Purple 0 MsHI	-	Purple	15	16.8	16	\$156.15	OC06	300 lb/ft ²

Lid - 1324 Spec Grade

13244001	1324 Fish Cover Green ICV	-	Green	-	6.0	100	\$49.58	OC06	300 lb/ft ²
13244004	1324 Fish Cover Green ICV	L Bolt	Green	-	6.0	100	\$50.72	OC06	300 lb/ft ²
13244018	1324 Fish Cover Green Blank	-	Green	-	6.0	100	\$51.91	OC06	300 lb/ft ²
13244019	1324 T Cover Green Blank	-	Green	-	6.4	100	\$51.91	OC06	300 lb/ft ²
13244026	1324 T Cover Green ICV	L Bolt	Green	-	6.4	100	\$60.88	OC06	300 lb/ft ²
13244027	1324 T Cover Green ICV	-	Green	-	6.4	100	\$59.49	OC06	300 lb/ft ²
13244049	1324 Fish Cover Pur RWDNDES	-	Purple	-	6.0	100	\$61.24	OC06	300 lb/ft ²
13244051	1324 T Cover Black Blank	-	Black	-	6.4	100	\$59.19	OC06	300 lb/ft ²
13244052	1324 Fish Cover Black Blank	L Bolt	Black	-	6.0	100	\$60.33	OC06	300 lb/ft ²
13244055	1324 Fish Cover Black ICV	-	Black	-	6.0	100	\$48.64	OC06	300 lb/ft ²
13244201	1324 T Cover Black ICV	-	Black	-	6.4	100	\$58.37	OC06	300 lb/ft ²
13244210	1324 T Cover Purple RWDNDES	-	Purple	-	6.4	100	\$63.50	OC06	300 lb/ft ²

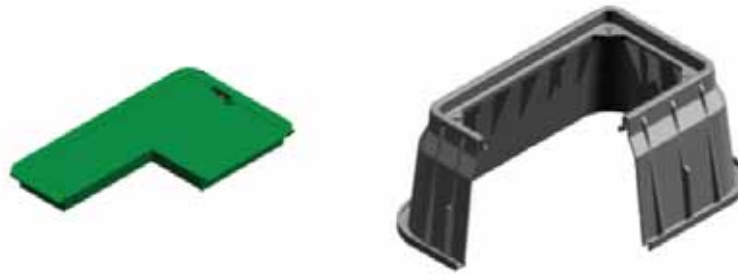
Lid - 1324 Spec Grade with Drop-N-Lock Feature

13244333	1324 T Cover Green Blank	2X DNL	Green	-	6.4	100	\$93.94	OC06	300 lb/ft ²
----------	--------------------------	--------	-------	---	-----	-----	---------	------	------------------------

CARSON

Carson - 1730 Super Jumbo Rectangular XL

Specification Grade



RATING	Part#	Description 1	Description 2	Color	Depth	Item Weight	Pallet Qty	List Price	Line Item Discount	Design Load
--------	-------	---------------	---------------	-------	-------	-------------	------------	------------	--------------------	-------------

Unit - 1730 Spec Grade

Ped	17301001	1730-12 Green ICV HBlit	0 MsHI Fish Cover	Green	12	29.4	16	\$224.70	OC06	300 lb/ft ²
	17301002	1730-12 Green ICV LBlit	0 MsHI Fish Cover	Green	12	29.4	16	\$226.31	OC06	300 lb/ft ²
	17301003	1730-12 Green Blank HBlit	0 MsHI Fish Cover	Green	12	29.4	16	\$222.04	OC06	300 lb/ft ²
	17301062	1730-12 Green ICV HBlit	0 MsHI T Cover	Green	12	29.4	16	\$224.70	OC06	300 lb/ft ²
	17301093	1730-12 Black Blank HBlit	0 MsHI Fish Cover	Black	12	29.4	16	\$219.34	OC06	300 lb/ft ²
	17301005	1730-15 Green ICV HBlit	0 MsHI Fish Cover	Green	15	34.4	16	\$235.98	OC06	300 lb/ft ²
	17301006	1730-15 Green ICV LBlit	0 MsHI Fish Cover	Green	15	34.4	16	\$236.78	OC06	300 lb/ft ²
	17301010	1730-15 Green Blank HBlit	0 MsHI Fish Cover	Green	15	34.4	16	\$231.06	OC06	300 lb/ft ²
	17301095	1730-15 Black Blank HBlit	0 MsHI Fish Cover	Black	15	34.4	16	\$223.25	OC06	300 lb/ft ²
	17301109	1730-15 Green Blank LPnta	0 MsHI Fish Cover	Green	15	34.4	16	\$236.49	OC06	300 lb/ft ²
	17301110	1730-15 Green Blank HBlit	0 MsHI T Cover	Green	15	34.4	16	\$231.06	OC06	300 lb/ft ²
	17301111	1730-15 Green Blank LBlit	0 MsHI T Cover	Green	15	34.4	16	\$232.87	OC06	300 lb/ft ²
	17301014	1730-18 Green ICV HBlit	0 MsHI Fish Cover	Green	18	37.3	16	\$252.08	OC06	300 lb/ft ²
	17301015	1730-18 Green ICV LBlit	0 MsHI Fish Cover	Green	18	37.3	16	\$254.50	OC06	300 lb/ft ²
	17301016	1730-18 Green ICV HBlit	0 MsHI T Cover	Green	18	37.3	16	\$252.08	OC06	300 lb/ft ²
	17301023	1730-18 Green Blank HBlit	0 MsHI Fish Cover	Green	18	37.3	16	\$249.12	OC06	300 lb/ft ²
	17301041	1730-18 Black Blank HBlit	0 MsHI Fish Cover	Black	18	37.3	16	\$239.49	OC06	300 lb/ft ²
	17301042	1730-18 Black ICV LBlit	0 MsHI Fish Cover	Black	18	37.3	16	\$291.54	OC06	300 lb/ft ²
	17301048	1730-18 Green Blank LBlit	0 MsHI T Cover	Green	18	37.3	16	\$250.92	OC06	300 lb/ft ²
	17301064	1730-18 Green ICV LBlit	0 MsHI T Cover	Green	18	37.3	16	\$254.50	OC06	300 lb/ft ²
	17301091	1730-18 Purple RCWDNDES LBlit	0 MsHI Fish Cover	Purple	18	37.3	16	\$249.67	OC06	300 lb/ft ²
	17301097	1730-18 Black Blank LBlit	0 MsHI T Cover	Black	18	37.3	16	\$242.20	OC06	300 lb/ft ²
	17301113	1730-18 Green Blank HBlit	0 MsHI T Cover	Green	18	37.3	16	\$249.12	OC06	300 lb/ft ²
	17301194	1730-18 Purple Blank LBlit	0 MsHI Fish Cover	Purple	18	37.3	16	\$335.77	OC06	300 lb/ft ²

Unit - 1730 Spec Grade with Drop-N-Lock Lid

P	17301433	1730-24 Blk-Grn Blank	2X DNL T Cover	Blk-Grn	24	64.1	5	\$243.92	OC06	300 lb/ft ²
---	----------	-----------------------	----------------	---------	----	------	---	----------	------	------------------------

Body - 1730 Spec Grade

Ped	17302001	1730-12 Body Green 0 MsHI	-	Green	12	19.0	16	\$116.43	OC06	300 lb/ft ²
	17302014	1730-12 Body Black 0 MsHI	-	Black	12	19.0	16	\$111.92	OC06	300 lb/ft ²
	17302025	1730-12 Body Purple 0 MsHI	-	Purple	12	19.0	16	\$182.33	OC06	300 lb/ft ²
	17302002	1730-15 Body Green 0 MsHI	-	Green	15	24.0	16	\$127.27	OC06	300 lb/ft ²
	17302015	1730-15 Body Black 0 MsHI	-	Black	15	24.0	16	\$119.44	OC06	300 lb/ft ²
	17302004	1730-18 Body Green 0 MsHI	-	Green	18	26.9	16	\$149.23	OC06	300 lb/ft ²
	17302013	1730-18 Body Black 0 MsHI	-	Black	18	26.9	16	\$141.70	OC06	300 lb/ft ²
	17302026	1730-18 Body Purple 0 MsHI	-	Purple	18	26.9	16	\$219.34	OC06	300 lb/ft ²

Lid - 1730 Spec Grade

Ped	17304001	1730 Fish Cover Green ICV	-	Green	-	10.5	120	\$111.14	OC06	300 lb/ft ²
	17304005	1730 Fish Cover Green ICV	L Bolt	Green	-	10.5	120	\$111.94	OC06	300 lb/ft ²
	17304008	1730 Fish Cover Green Blank	-	Green	-	10.5	120	\$108.31	OC06	300 lb/ft ²
	17304009	1730 Fish Cover Green Blank	L Bolt	Green	-	10.5	120	\$109.21	OC06	300 lb/ft ²
	17304012	1730 Fish Cover Black Blank	-	Black	-	10.5	120	\$103.81	OC06	300 lb/ft ²
	17304014	1730 Fish Cover Black ICV	-	Black	-	10.5	120	\$71.28	OC06	300 lb/ft ²
	17304026	1730 T Cover Green Blank	L Bolt	Green	-	11.3	120	\$109.21	OC06	300 lb/ft ²
	17304032	1730 T Cover Green ICV	-	Green	-	11.3	120	\$133.69	OC06	300 lb/ft ²
	17304033	1730 T Cover Green ICV	L Bolt	Green	-	11.3	120	\$134.50	OC06	300 lb/ft ²
	17304233	1730 T Cover Black Blank	-	Black	-	11.3	120	\$103.81	OC06	300 lb/ft ²
	17304243	1730 Fish Cover Purple RWDNDES	-	Purple	-	10.5	120	\$154.48	OC06	300 lb/ft ²

Lid - 1730 Spec Grade with Drop-N-Lock Feature

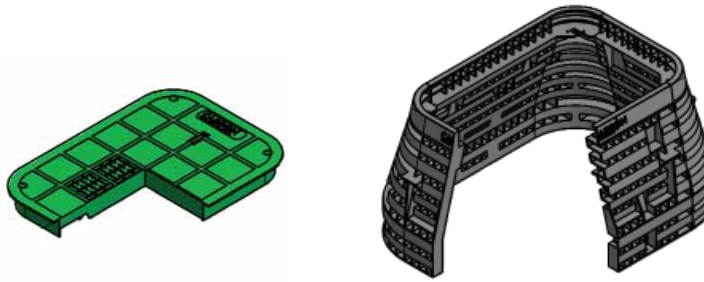
P	17304326	1730 T Cover Green Blank	2X DNL	Green	-	13.0	60	\$56.63	OC06	300 lb/ft ²
---	----------	--------------------------	--------	-------	---	------	----	---------	------	------------------------

Carson - 2436
Specification Grade

 **Light Duty**
 Pedestrian Only

 **Pedestrian**

Call Customer Service for other custom vault sizes and options.



RATING	Part#	Description 1	Description 2	Color	Depth	Item Weight	Pallet Qty	List Price	Line Item Discount	Design Load
--------	-------	---------------	---------------	-------	-------	-------------	------------	------------	--------------------	-------------

Unit - 2436 Spec Grade

Ped	24361003	2436-18 Gray Blank HBlt	2x 3/8 in. Fish Cover	Gray	18	63.6	5	\$558.63	OC06	300 lb/ft ²
	24361285	2436-18 Gray Blank HBlt	4x 3/8 in. T Cover	Gray	18	63.6	5	\$558.63	OC06	300 lb/ft ²
	24361073	2436-24 Blk-Grn Blank	4x EzLck T Cover	Blk-Grn	24	82.5	5	\$401.01	OC06	300 lb/ft ²
	24361180	2436-24 Blk-Grn Blank	6x EzLck TCvr 2pc Plug	Blk-Grn	24	82.5	5	\$433.25	OC06	300 lb/ft ²

Body - 2436 Spec Grade

Ped	24362022	2438-18 Body Gray	4x 3/8 in. Speed Nut	Gray	18	47.3	5	\$337.39	OC06	300 lb/ft ²
	24362002	2436-24 Body Gray	2x 3/8 in. Fltg Nut	Gray	24	62.2	4	\$482.11	OC06	300 lb/ft ²
	24362044	2436-24 Body Black	4x EzLck Clip	Black	24	62.2	4	\$358.59	OC06	300 lb/ft ²

Lid - 2436 Spec Grade

Ped	24364082	2436 T Cover Green Blank	4x Bolt Hole	Green	-	37.0	25	\$129.98	OC06	300 lb/ft ²
	24364087	2436 T Cover Gray Blank	4x Bolt Hole	Gray	-	37.0	25	\$129.98	OC06	300 lb/ft ²

Lid - 2436 Spec Grade with Drop-N-Lock Feature

P	24364135	2436 T Cover Green Blank	2x DNL	Green	-	37	25	\$129.98	OC06	300 lb/ft ²
---	----------	--------------------------	--------	-------	---	----	----	----------	------	------------------------

Carson - 1324, 1419, 1730, 2436
Hybrid

 **Medium Duty**
 Non-deliberate Traffic

 **Heavy Duty**
 Non-deliberate Traffic

 **Tier 5, Tier 8 & 20K**
 on select models

Carson® Hybrids are specially designed to interchange various lid materials with a HDPE body to maximize load ratings and at the highest value.

RATING	Part#	Description 1	Description 2	Color	Depth	Item Weight	Pallet Qty	List Price	Line Item Discount	Design Load
--------	-------	---------------	---------------	-------	-------	-------------	------------	------------	--------------------	-------------

Unit - 1324 Spec Grade

T5	13241033	1324-18 HIP Gray Blank HBlt	Plastic Body PC Rng Fish Cover	Gray	18	133	10	\$419.29	OC07	5000 lbf
----	----------	-----------------------------	--------------------------------	------	----	-----	----	----------	------	----------

Unit - 1730 Spec Grade

T5	17301345	1730-24 HLPC Blk-Gry Blank	2x HBlt FCvr T5	Blk-Gry	24	93	2	\$472.53	OC07	5000 lbf
----	----------	----------------------------	-----------------	---------	----	----	---	----------	------	----------

Unit - 2436 Spec Grade

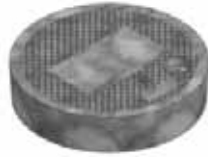
20K T8	24361181	2436-24 HLPC Blk-Gry Blank	2x HBlt FCvr T8	Blk-Gry	24	164	2	\$985.51	OC07	8000
	24361015	2436-18 HPC Gray Blank HBlt	2x 1 1/2 in. FCvr 20K	Gray	18	233	2	\$823.78	OC07	20000
	24361017	2436-24 HPC Gray Blank HBlt	2x 1 1/2 in. FCvr 20K	Gray	24	104	2	\$1,087.37	OC07	20000

Fibrelyte - FL08

Composite

 **Medium Duty**
Non-deliberate Traffic

 **Tier 8**



Part#	Description 1	Description 2	Color	Depth	Item Weight	Pallet Qty	List Price	Line Item Discount	Design Load
-------	---------------	---------------	-------	-------	-------------	------------	------------	--------------------	-------------

Body - FL08

TB 02006005	Box, FL08 T	FL08TBOX	Gray	12	5.7	64	\$27.00	OC11	8000
-------------	-------------	----------	------	----	-----	----	---------	------	------

Lid - FL08

TB 02001175	Lid, FL08 D - No Mark	FL08D000	Gray	-	2.1	100	\$15.27	OC11	8000
02001183	Lid, FL08 D - "Irrigation"	FL08D005	Gray	-	2.1	100	\$15.27	OC11	8000
02006125	Lid, FL08 T - No Mark	FL08T000	Gray	-	2.1	100	\$15.27	OC11	8000
02500160	Lid, FL08 T - SPECIAL	FL08T099	Gray	-	2.1	100	\$15.27	OC11	8000

Fibrelyte - FL09

Composite

 **Medium Duty**
Non-deliberate Traffic

 **Tier 8**



Part#	Description 1	Description 2	Color	Depth	Item Weight	Pallet Qty	List Price	Line Item Discount	Design Load
-------	---------------	---------------	-------	-------	-------------	------------	------------	--------------------	-------------

Body - FL09

TB 02011000	Box, FL09 T	FL09TBOX	Gray	12	17.0	48	\$44.73	OC11	8000
-------------	-------------	----------	------	----	------	----	---------	------	------

Lid - FL09

TB 02001245	Lid, FL09 D - No Mark	FL09D000	Gray	-	8.1	120	\$29.09	OC11	8000
02001285	Lid, FL09 D - "Irrigation"	FL09D005	Gray	-	8.1	120	\$29.09	OC11	8000
02001300	Lid, FL09 D - "Sprinkler Control"	FL09D062	Gray	-	8.1	120	\$29.09	OC11	8000
02001360	Lid, FL09 D (Purple) - "Reclaimed Water"	FL09D090P	Purple	-	8.1	120	\$29.09	OC11	8000
02006160	Lid, FL09 T (Purple) - "Reclaimed Water"	FL09T090P	Purple	-	8.1	120	\$29.09	OC11	8000
02006165	Lid, FL09 T - No Mark	FL09T000	Gray	-	8.1	120	\$29.09	OC11	8000
02006525	Lid, FL09 T - "Sprinkler Control"	FL09T062	Gray	-	8.1	120	\$29.09	OC11	8000
02500240	Lid, FL09 D - SPECIAL	FL09D099	Gray	-	8.1	120	\$29.09	OC11	8000
02500580	Lid, FL09 T - SPECIAL	FL09T099	Gray	-	8.1	120	\$29.09	OC11	8000

Fibrelyte - FL12

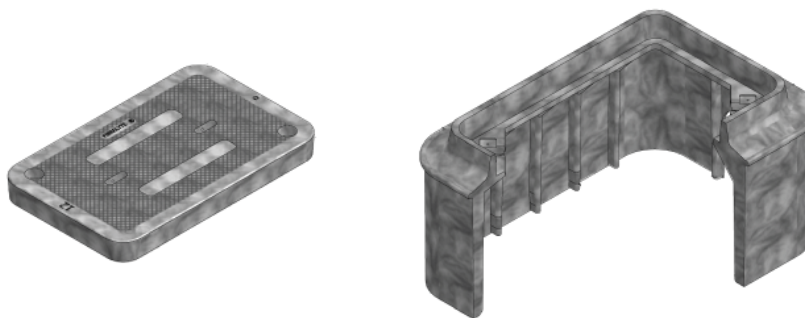
Composite



Medium Duty
Non-deliberate Traffic



Tier 8



Part#	Description 1	Description 2	Color	Depth	Item Weight	Pallet Qty	List Price	Line Item Discount	Design Load
-------	---------------	---------------	-------	-------	-------------	------------	------------	--------------------	-------------

Body - FL12

02001029	Box, FL12 T 12 (No Mouseholes)	FL12TBOX12 - NM	Gray	12	25.6	30	\$71.87	OC11	8000
02001032	Box, FL12 T 12" (W/Mouseholes)	FL12TBOX12 WM	Gray	12	25.6	30	\$71.87	OC11	8000

Lid - FL12

02001374	Lid, FL12 D - SPECIAL	FL12D099	Gray	-	9.7	80	\$40.07	OC11	8000
02006209	Lid, FL12 T - No Mark	FL12T000	Gray	-	9.7	80	\$40.07	OC11	8000
02006224	Lid, FL12 T - SPECIAL	FL12T099	Gray	-	9.7	80	\$40.07	OC11	8000

Fibrelyte - FL30

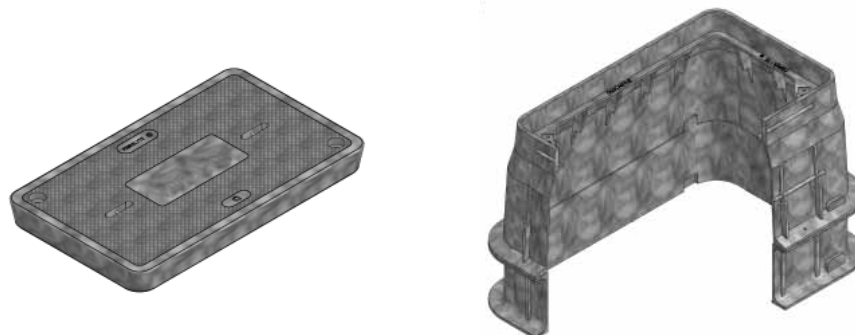
Composite



Medium Duty
Non-deliberate Traffic



Tier 8



Part#	Description 1	Description 2	Color	Depth	Item Weight	Pallet Qty	List Price	Line Item Discount	Design Load
-------	---------------	---------------	-------	-------	-------------	------------	------------	--------------------	-------------

Body - FL30

02006040	Box, FL30 T 12"	FL30TBOX12	Gray	12	26	24	\$75.57	OC11	8000
02006045	Box, FL30 T 18"	FL30TBOX18	Gray	18	34	18	\$135.05	OC11	8000
02006050	Box, FL30 T 20"	FL30TBOX20	Gray	20	35	18	\$144.04	OC11	8000
02006052	Box, FL30 T 24"	FL30TBOX24	Gray	24	41	12	\$194.09	OC11	8000

Extension - FL30

02001090	Extension, FL30 6"	FL30X6	Gray	6	8	42	\$54.01	OC11	8000
02001095	Extension, FL30 8"	FL30X8	Gray	8	9	27	\$63.03	OC11	8000

Lid - FL30

02001435	Lid, FL30 D - No Mark	FL30D000	Gray	-	20	60	\$72.00	OC11	8000
02001480	Lid, FL30 D - "Sprinkler Control"	FL30D062	Gray	-	20	60	\$72.00	OC11	8000
02001505	Lid, FL30 D (Green) - "Irrigation"	FL30D005G	Green	-	20	60	\$72.00	OC11	8000
02001520	Lid, FL30 D (Purple) - "Reclaimed Water"	FL30D090P	Purple	-	20	60	\$72.00	OC11	8000
02006260	Lid, FL30 T - No Mark	FL30T000	Gray	-	20	60	\$72.00	OC11	8000
02006288	Lid, FL30 T - "Irrigation"	FL30T005	Gray	-	20	60	\$72.00	OC11	8000
02006313	Lid, FL30 T - "Sprinkler Control"	FL30T062	Gray	-	20	60	\$72.00	OC11	8000
02500760	Lid, FL30 D - SPECIAL	FL30D099	Gray	-	20	60	\$72.00	OC11	8000
02501120	Lid, FL30 T - SPECIAL	FL30T099	Gray	-	20	60	\$72.00	OC11	8000

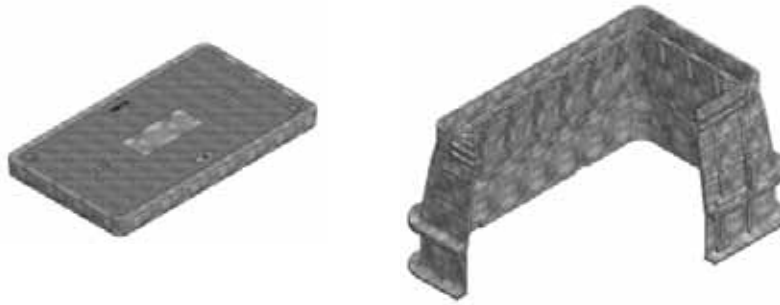


Fibrelyte - FL36

Composite

 **Medium Duty**
Non-deliberate Traffic

 **Tier 8**



RATING	Part#	Description 1	Description 2	Color	Depth	Item Weight	Pallet Qty	List Price	Line Item Discount	Design Load
--------	-------	---------------	---------------	-------	-------	-------------	------------	------------	--------------------	-------------

Body - FL36

TB	02006095	Box, FL36 T 12"	FL36TBOX12	Gray	12	42	16	\$117.03	OC11	8000
	02006100	Box, FL36 T 18"	FL36TBOX18	Gray	18	52	12	\$187.27	OC11	8000
	02006105	Box, FL36 T 20"	FL36TBOX20	Gray	20	57	10	\$198.05	OC11	8000
	02006110	Box, FL36 T 24"	FL36TBOX24	Gray	24	63	8	\$257.50	OC11	8000

Extension - FL36

TB	02001160	Extension, FL36 6"	FL36X6	Gray	6	11	28	\$66.57	OC11	8000
	02001165	Extension, FL36 8"	FL36X8	Gray	8	16	18	\$77.46	OC11	8000

Lid - FL36

TB	02001525	Lid, FL36 D - No Mark	FL36D000	Gray	-	34	30	\$113.76	OC11	8000
	02001551	Lid, FL36 D - "Irrigation"	FL36D005	Gray	-	34	30	\$113.76	OC11	8000
	02006385	Lid, FL36 T - No Mark	FL36T000	Gray	-	34	30	\$113.76	OC11	8000
	02501220	Lid, FL36 D - SPECIAL	FL36D099	Gray	-	34	30	\$113.76	OC11	8000
	02501520	Lid, FL36 T - SPECIAL	FL36T099	Gray	-	34	30	\$113.76	OC11	8000

H-Series - 0910 Round

Polymer Concrete



Heavy Duty
Non-deliberate Traffic



Tier 22*



*Products are rated by the lowest component rating. A tier 15 cover with a tier 22 body is rated tier 15. A tier 22 cover with a tier 22 body is rated tier 22.

See Accessories Section in the Back of this Manual for Options, Hardware, Specialty Markings and Other Accessories

RATING	Part#	Description 1	Description 2	Color	Depth	Item Weight	Pallet Qty	List Price	Line Item Discount	Design Load
Unit - 0910 (Units come standard with Body-Open Bottom, Lid and SS Hex Bolt Floating Nut Hardware)										
22	09101049	Unit, PC0910-10, FW, Blank	PC0910T-T22	Gray	10	34	36	\$198.87	OC03	22500
Body - 0910										
22	09102011	Body, PC0910-10	PC091010FW	Gray	10	23	36	\$144.40	OC03	22500
Lid - 0910										
22	09104029	Lid, PC0910 - No Mark	PC0910-T22	Gray	-	11	100	\$65.87	OC03	22500

H-Series - 1118

Polymer Concrete



Medium Duty
Non-deliberate Traffic



Heavy Duty
Non-deliberate Traffic



Tier 15 & 22*



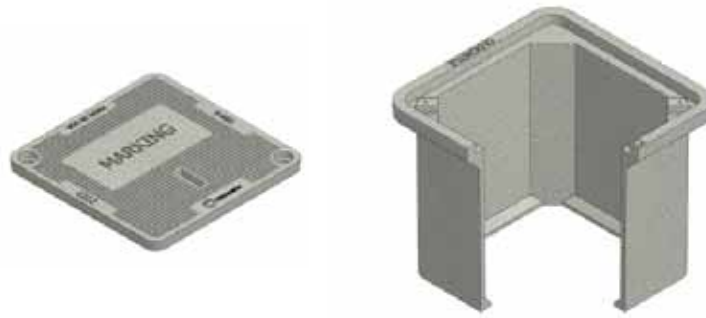
*Products are rated by the lowest component rating. A tier 15 cover with a tier 22 body is rated tier 15. A tier 22 cover with a tier 22 body is rated tier 22.

See Accessories Section in the Back of this Manual for Options, Hardware, Specialty Markings and Other Accessories

RATING	Part#	Description 1	Description 2	Color	Depth	Item Weight	Pallet Qty	List Price	Line Item Discount	Design Load
Unit - 1118 (Units come standard with Body-Open Bottom, Lid and SS Hex Bolt Floating Nut Hardware)										
15	11181604	Unit, PC1118-12, T15 - Blank	PC111812-T15	Gray	12	67	28	\$193.35	OC03	15000
22	11181003	Unit, PC1118-12, T22 - Blank	PC111812-T22	Gray	12	73	28	\$223.31	OC03	22500
Body - 1118										
22	11182001	Body, PC1118-12,SW	PC111812SW	Gray	12	47	28	\$98.55	OC03	22500
	11182003	Body, PC1118-18,SW	PC111818SW	Gray	18	70	28	\$115.24	OC03	22500
Lid - 1118										
15	11184612	Lid, PC1118-T, T15, - Blank	PC1118T-T15	Gray	-	20	60	\$79.93	OC03	15000
22	11184003	Lid, PC1118-T, T22 - Blank	PC1118T-T22	Gray	-	28	60	\$109.54	OC03	22500

H-Series - 1212
Polymer Concrete

- Heavy Duty**
Non-deliberate Traffic
- Tier 22***



*Products are rated by the lowest component rating. A tier 15 cover with a tier 22 body is rated tier 15. A tier 22 cover with a tier 22 body is rated tier 22.

See Accessories Section in the Back of this Manual for Options, Hardware, Specialty Markings and Other Accessories

RATING	Part#	Description 1	Description 2	Color	Depth	Item Weight	Pallet Qty	List Price	Line Item Discount	Design Load
Unit - 1212 (Units come standard with Body-Open Bottom, Lid and SS Hex Bolt Floating Nut Hardware)										
22	12121003	Unit, PC 1212-12 HLW - No Mark	PC1212T-T22	Gray	12	46	36	\$144.40	OC03	22500
Body - 1212										
22	12122001	Body, PC 1212-12 SW, HLW	PC1212T-T22	Gray	12	35	36	\$110.83	OC03	22500
Lid - 1212										
22	12124003	Lid, PC 1212 HLW - No Mark	PC1212T-T22	Gray	-	11	40	\$52.35	OC03	22500

H-Series - 1324 Rectangular & Flared Wall (FW)
Polymer Concrete

Straight Wall

- Medium Duty**
Non-deliberate Traffic
- Heavy Duty**
Non-deliberate Traffic
- Tier 15 & 22***



*Products are rated by the lowest component rating. A tier 15 cover with a tier 22 body is rated tier 15. A tier 22 cover with a tier 22 body is rated tier 22.

See Accessories Section in the Back of this Manual for Options, Hardware, Specialty Markings and Other Accessories

Flared Wall

- Medium Duty**
Non-deliberate Traffic
- Tier 15***

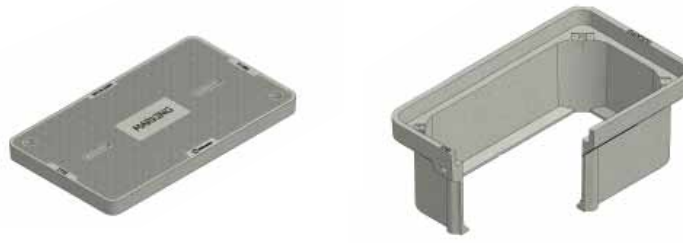


RATING	Part#	Description 1	Description 2	Color	Depth	Item Weight	Pallet Qty	List Price	Line Item Discount	Design Load
Unit - 1324 (Units come standard with Body-Open Bottom, Lid and SS Hex Bolt Floating Nut Hardware)										
T15	13241600	Unit, PC1324-12, T15 - Blank	PC132412-T15	Gray	12	90	20	\$248.09	OC03	15000
T15	13241610	Unit, PC1324-18, T15 - Blank	PC132418-T15	Gray	18	109	15	\$265.25	OC03	15000
T15	13241611	Unit, PC1324-18, T15 - Blank, FW	PC132418-T15	Gray	18	116	15	\$265.25	OC03	15000
T15	13241635	Unit, PC1324-24, T15 - Blank	PC132424-T15	Gray	24	127	10	\$313.42	OC03	15000
T22	13241023	Unit, PC1324-12, T22 - Blank	PC132412-T22	Gray	12	99	20	\$292.57	OC03	22500
T22	13241164	Unit, PC1324-24, T22 - Blank	PC132424-T22	Gray	24	140	10	\$357.90	OC03	22500
Body - 1324										
T15	13242600	Body, PC1324-18,FW	PC132418FW	Gray	18	71	15	\$131.94	OC03	15000
T22	13242020	Body, PC1324-12,SW	PC132412SW	Gray	12	50	20	\$113.01	OC03	22500
T22	13242023	Body, PC1324-18,SW	PC132418SW	Gray	18	52	15	\$130.38	OC03	22500
T22	13242038	Body, PC1324-24,SW	PC132424SW	Gray	24	89	10	\$179.12	OC03	22500
Extension - 1324 (Compatible under Straight Wall Bodies)										
22	13243001	Ext, PC 1324-9	PC13249X	Gray	9	50	16	\$157.07	OC03	22500
Lid - 1324										
T15	13244603	Lid, PC1324-T, T15 - Blank	PC1324T-T15	Gray	-	38	30	\$119.90	OC03	15000
22	13244014	Lid, PC1324-T, T22 - Blank	PC1324T-T22	Gray	-	51	30	\$163.84	OC03	22500

H-Series - 1730 Rectangular & Flared Wall (FW)

Polymer Concrete

Straight Wall



*Products are rated by the lowest component rating. A tier 15 cover with a tier 22 body is rated tier 15. A tier 22 cover with a tier 22 body is rated tier 22.

See Accessories Section in the Back of this Manual for Options, Hardware, Specialty Markings and Other Accessories

Flared Wall



RATING	Part#	Description 1	Description 2	Color	Depth	Item Weight	Pallet Qty	List Price	Line Item Discount	Design Load
--------	-------	---------------	---------------	-------	-------	-------------	------------	------------	--------------------	-------------

Unit - 1730 (Units come standard with Body-Open Bottom, Lid and SS Hex Bolt Floating Nut Hardware)

T15	17301600	Unit, PC1730-12, T15 - Blank	PC173012-T15	Gray	12	129	12	\$296.72	OC03	15000
	17301613	Unit, PC1730-18, T15 - Blank	PC173018-T15	Gray	18	154	9	\$315.97	OC03	15000
	17301614	Unit, PC1730-18, T15 - Blank, FW	PC173018-T15	Gray	18	154	6	\$315.97	OC03	15000
	17301633	Unit, PC1730-24, T15 - Blank	PC173024-T15	Gray	24	181	6	\$377.60	OC03	15000
T22	17301028	Unit, PC1730-12, T22 - Blank	PC173012-T22	Gray	12	152	12	\$347.65	OC03	22500
	17301031	Unit, PC1730-18, T22 - Blank	PC173018-T22	Gray	18	177	9	\$366.90	OC03	22500
	17301034	Unit, PC1730-24, T22 - Blank	PC173024-T22	Gray	24	204	6	\$428.53	OC03	22500

Body - 1730

T15	17302600	Body, PC1730-18,FW	PC173018FW	Gray	18	88	6	\$171.85	OC03	15000
	17302006	Body, PC1730-12,SW	PC173012SW	Gray	12	65	12	\$143.34	OC03	22500
T22	17302030	Body, PC1730-18,SW	PC173018SW	Gray	18	96	9	\$162.81	OC03	22500
	17302031	Body, PC1730-24,SW	PC173024SW	Gray	24	119	6	\$225.19	OC03	22500
	17302046	Body, PC1730-30,SW	PC173030SW	Gray	30	166	6	\$263.42	OC03	22500

Extension - 1730 (Compatible under Straight Wall Bodies)

T22	17303001	Ext, PC 1730-9	PC17309X	Gray	9	48	15	\$119.70	OC03	22500
-----	----------	----------------	----------	------	---	----	----	----------	------	-------

Lid - 1730

T15	17304604	Lid, PC1730-T, T15 - Blank	PC1730T-T15	Gray	-	62	25	\$138.34	OC03	15000
T22	17304018	Lid, PC1730-T, T22 - Blank	PC1730T-T22	Gray	-	85	25	\$188.66	OC03	22500

H-Series - 2424

Polymer Concrete



Call for details on Tier 22 availability



*Products are rated by the lowest component rating. A tier 15 cover with a tier 22 body is rated tier 15. A tier 22 cover with a tier 22 body is rated tier 22.

See Accessories Section in the Back of this Manual for Options, Hardware, Specialty Markings and Other Accessories

RATING	Part#	Description 1	Description 2	Color	Depth	Item Weight	Pallet Qty	List Price	Line Item Discount	Design Load
--------	-------	---------------	---------------	-------	-------	-------------	------------	------------	--------------------	-------------

Unit - 2424 (Units come standard with Body-Open Bottom, Lid and SS Hex Bolt Floating Nut Hardware)

T15	24241600	Unit, PC2424-24, T15 - Blank	PC242424-T15	Gray	24	224	8	\$520.35	OC03	15000
	24241614	Unit, PC2424-36, T15 - Blank	PC242436-T15	Gray	36	282	8	\$666.33	OC03	15000




Body - 2424

T22	24242600	Body, PC2424-24,SW	PC242424SW	Gray	24	156	8	\$305.98	OC03	22500
	24242601	Body, PC2424-36,SW	PC242436SW	Gray	36	219	8	\$499.39	OC03	22500

Lid - 2424

T15	24244605	Lid, PC2424-T, T15 - Blank	PC2424T-T15	Gray	-	75	20	\$194.38	OC03	15000
-----	----------	----------------------------	-------------	------	---	----	----	----------	------	-------

H-Series - 2436
Polymer Concrete

-  **Medium Duty**
Non-deliberate Traffic
-  **Heavy Duty**
Non-deliberate Traffic
-  **Tier 15 & 22***



*Products are rated by the lowest component rating. A tier 15 cover with a tier 22 body is rated tier 15. A tier 22 cover with a tier 22 body is rated tier 22.

See Accessories Section in the Back of this Manual for Options, Hardware, Specialty Markings and Other Accessories

RATING	Part#	Description 1	Description 2	Color	Depth	Item Weight	Pallet Qty	List Price	Line Item Discount	Design Load
Unit - 2436 (Units come standard with Body-Open Bottom, Lid and SS Hex Bolt Floating Nut Hardware)										
T15	24361600	Unit, PC2436-18, T15 - Blank	PC243618-T15	Gray	18	295	6	\$544.65	OC03	15000
	24361610	Unit, PC2436-24, T15 - Blank	PC243624-T15	Gray	24	330	4	\$655.22	OC03	15000
	24361630	Unit, PC2436-36, T15 - Blank	PC243636-T15	Gray	36	399	2	\$759.24	OC03	15000
T22	24361027	Unit, PC2436-18, T22 - Blank	PC243618-T22	Gray	18	345	6	\$632.47	OC03	22500
	24361030	Unit, PC2436-24, T22 - Blank	PC243624-T22	Gray	24	380	4	\$743.04	OC03	22500
	24361642	Unit, PC2436-36, T22 - Blank	PC243630-T22	Gray	36	449	2	\$847.06	OC03	22500

Body - 2436

T22	24362016	Body, PC2436-18,SW	PC243618SW	Gray	18	142	4	\$282.23	OC03	22500
	24362214	Body, PC2436-24,SW	PC243624SW	Gray	24	180	4	\$394.13	OC03	22500
	24362212	Body, PC2436-30,SW	PC243630SW	Gray	30	221	2	\$445.65	OC03	22500
	24362227	Body, PC2436-36,SW	PC243636SW	Gray	36	249	2	\$499.39	OC03	22500




Extension - 2436

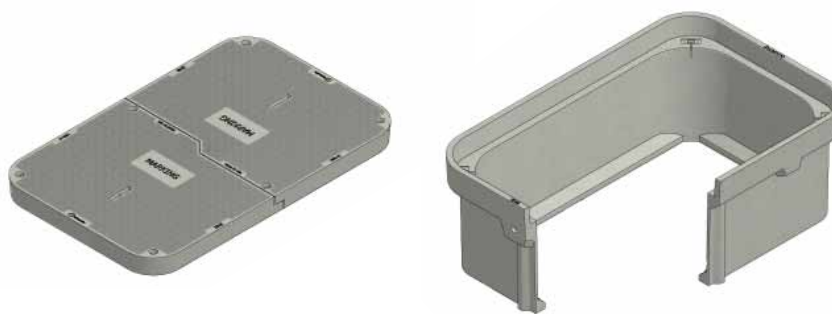
22	24363001	Ext, PC 2436-9	PC24369X	Gray	-	60	10	\$336.30	OC03	22500
----	----------	----------------	----------	------	---	----	----	----------	------	-------

Lid - 2436

T15	24364604	Lid, PC2436-T, T15 - Blank	PC2436T-T15	Gray	-	150	10	\$242.76	OC03	15000
	24364010	Lid, PC2436-T, T22 - Blank	PC2436T-T22	Gray	-	204	10	\$329.53	OC03	22500

H-Series - 3048
Polymer Concrete

-  **Medium Duty**
Non-deliberate Traffic
-  **Heavy Duty**
Non-deliberate Traffic
-  **Tier 15 & 22***



*Products are rated by the lowest component rating. A tier 15 cover with a tier 22 body is rated tier 15. A tier 22 cover with a tier 22 body is rated tier 22.

See Accessories Section in the Back of this Manual for Options, Hardware, Specialty Markings and Other Accessories


RATING	Part#	Description 1	Description 2	Color	Depth	Item Weight	Pallet Qty	List Price	Line Item Discount	Design Load
Unit - 3048 (Units come standard with Body-Open Bottom, 2 Piece Lid and SS Hex Bolt Floating Nut Hardware)										
T15	30481600	Unit, PC3048-18, T15 - Blank	PC304818-T15	Gray	18	408	4	\$897.39	OC03	15000
	30481612	Unit, PC3048-24, T15 - Blank	PC304824-T15	Gray	24	454	4	\$979.98	OC03	15000
	30481634	Unit, PC3048-36, T15 - Blank	PC304836-T15	Gray	36	543	2	\$1,138.02	OC03	15000
T22	30481003	Unit, PC3048-18, T22 - Blank	PC304818-T22	Gray	18	526	4	\$1,023.11	OC03	22500
	30481006	Unit, PC3048-24, T22 - Blank	PC304824-T22	Gray	24	572	4	\$1,105.70	OC03	22500
	30481012	Unit, PC3048-36, T22 - Blank	PC304836-T22	Gray	36	661	2	\$1,263.75	OC03	22500

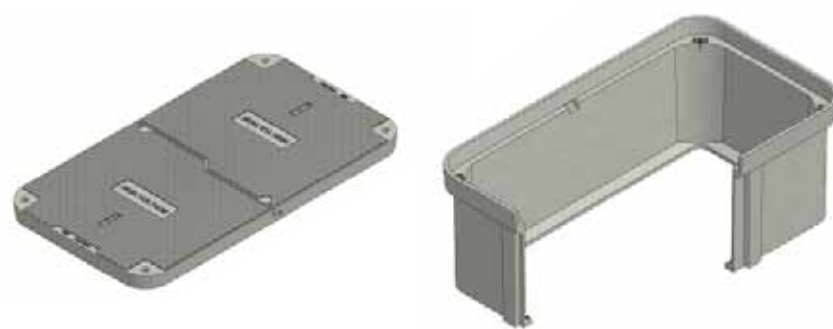
RATING	Part#	Description 1	Description 2	Color	Depth	Item Weight	Pallet Qty	List Price	Line Item Discount	Design Load
Body - 3048										
T22	30482008	Body, PC3048-18,SW	PC304818SW	Gray	18	188	3	\$423.12	OC03	22500
	30482021	Body, PC3048-24,SW	PC304824SW	Gray	24	234	3	\$506.71	OC03	22500
	30482020	Body, PC3048-30,SW	PC304830SW	Gray	30	301	1	\$594.70	OC03	22500
	30482017	Body, PC3048-36,SW	PC304836SW	Gray	36	307	1	\$667.30	OC03	22500

Extension - 3048										
22	30483001	Ext, PC 3048-9	PC30489X	Gray	9	99	4	\$341.37	OC03	22500

Lid - 3048										
T15	30484009	Lid, PC 3048 - No Mark	1 pc Cover	Gray	-	340	10	\$627.63	OC03	15000
22	30484602	Lid, PC3048-T, T15 - Blank,2pc	PC3048T-T15	Gray	-	220	10	\$453.71	OC03	15000
	30484003	Lid, PC3048-T, T22 - Blank,2pc	PC3048T-T22	Gray	-	338	10	\$577.93	OC03	22500

H-Series - 3060
Polymer Concrete

-  **Medium Duty**
Non-deliberate Traffic
-  **Heavy Duty**
Non-deliberate Traffic
-  **Tier 15 & 22***



*Products are rated by the lowest component rating. A tier 15 cover with a tier 22 body is rated tier 15. A tier 22 cover with a tier 22 body is rated tier 22.

See Accessories Section in the Back of this Manual for Options, Hardware, Specialty Markings and Other Accessories

RATING	Part#	Description 1	Description 2	Color	Depth	Item Weight	Pallet Qty	List Price	Line Item Discount	Design Load
Unit - 3060										
T22	30601002	Unit, PC 3060-24 w/HBlt- No Mark	4x 1/2 in. 2pc FCvr H20	Gray	24	805	1	\$1,364.83	OC03	22500
	30601006	Unit, PC 3060-36 w/HBlt- No Mark	4x 1/2 in. 2pc FCvr H20	Gray	36	889	1	\$1,843.00	OC03	22500

Body - 3060										
T22	30602001	Body, PC 3060-24	4x 1/2 in. Fltg Nut	Gray	24	325	3	\$688.43	OC03	22500
	30602002	Body, PC 3060-30	4x 1/2 in. Fltg Nut	Gray	30	367	1	\$777.73	OC03	22500
	30602006	Body, PC 3060-36	4x 1/2 in. Fltg Nut	Gray	36	409	1	\$899.33	OC03	22500

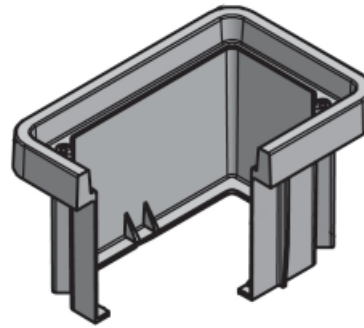
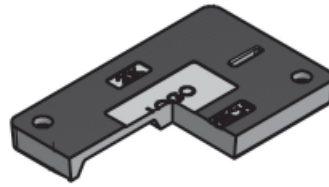
Lid - 3060										
22	30604002	Lid, PC 3060 2pc Kit - No Mark	2pc Assembly	Gray	-	480	10	\$867.03	OC03	22500

Synertech - 1118

Duo Mold

 **Medium Duty**
Non-deliberate Traffic

 **Tier 15***



*Products are rated by the lowest component rating. A tier 15 cover with a tier 22 body is rated tier 15. A tier 22 cover with a tier 22 body is rated tier 22.

See Accessories Section in the Back of this Manual for Options, Hardware, Specialty Markings and Other Accessories

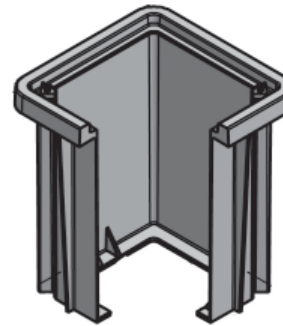
Part#	Description 1	Description 2	Color	Depth	Item Weight	Pallet Qty	List Price	Line Item Discount	Design Load
Unit - 1118									
38101100	Unit, SYN1118-12, T15 - Blank	SYN111812-T15	Gray	12	51	56	\$168.31	OC10	15000
38101190	Unit, SYN1118-18, T15 - Blank	SYN111818-T15	Gray	18	56	32	\$179.07	OC10	15000
Body - 1118									
32108101	Box, SYN1118 T 12" Duo	SYN1118TBOX12	Gray	12	25	56	\$95.02	OC10	15000
32112101	Box, SYN1118 T 18" Duo	SYN1118TBOX18	Gray	18	30	32	\$105.78	OC10	15000
32116101	Box, SYN1118 T 24" (2)	SYN1118T 2 STKDBXS	Gray	24	49	24	\$203.99	OC10	15000
32117101	Box, SYN1118 T 30" (2)	SYN1118T 2 STKDBXS	Gray	30	55	24	\$235.07	OC10	15000
32118101	Box, SYN1118 T 36" Duo (2)	SYN1118T 2 STKDBXS	Gray	36	60	16	\$259.66	OC10	15000
Lid - 1118									
31050121	Lid, SYN1118 T - No Mark	SYN1118T000	Gray	-	26	95	\$55.09	OC10	15000

Synertech - 1212

Duo Mold

 **Medium Duty**
Non-deliberate Traffic

 **Tier 15***



*Products are rated by the lowest component rating. A tier 15 cover with a tier 22 body is rated tier 15. A tier 22 cover with a tier 22 body is rated tier 22.

See Accessories Section in the Back of this Manual for Options, Hardware, Specialty Markings and Other Accessories

Part#	Description 1	Description 2	Color	Depth	Item Weight	Pallet Qty	List Price	Line Item Discount	Design Load
Unit - 1212									
38102100	Unit, SYN1212-12, T15 - Blank	SYN121212-T15	Gray	12	31	54	\$143.86	OC10	15000
38102190	Unit, SYN1212-18, T15 - Blank	SYN121218-T15	Gray	18	35	36	\$156.64	OC10	15000
Body - 1212									
32120101	Box, SYN1212 T 12" Duo	SYN1212TBOX12	Gray	12	16	54	\$90.08	OC10	15000
32124101	Box, SYN1212 T 18" Duo	SYN1212TBOX18	Gray	18	20	36	\$102.86	OC10	15000
32128101	Box, SYN1212 T 24" Duo (2)	SYN1212T 2 STKDBXS	Gray	24	33	27	\$202.37	OC10	15000
32129101	Box, SYN1212 T 30" Duo (2)	SYN1212T 2 STKDBXS	Gray	30	36	18	\$220.96	OC10	15000
32130101	Box, SYN1212 T 36" Duo (2)	SYN1212T 2 STKDBXS	Gray	36	40	18	\$239.53	OC10	15000
Lid - 1212									
31100121	Lid, SYN1212 T - No Mark	SYN1212T000	Gray	-	15	160	\$40.06	OC10	15000
31101721	Lid, SYN1212 T - Irrigation	SYN1212T005	Gray	-	15	160	\$40.06	OC10	15000

Synertech - 1324

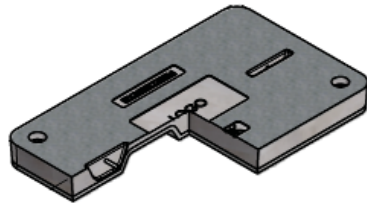
Duo Mold



Medium Duty
Non-deliberate Traffic



Tier 15*



*Products are rated by the lowest component rating. A tier 15 cover with a tier 22 body is rated tier 15. A tier 22 cover with a tier 22 body is rated tier 22.

See Accessories Section in the Back of this Manual for Options, Hardware, Specialty Markings and Other Accessories

Rating	Part#	Description 1	Description 2	Color	Depth	Item Weight	Pallet Qty	List Price	Line Item Discount	Design Load
Unit - 1324										
T15	38103100	Unit, SYN1324-12, T15 - Blank	SYN132412-T15	Gray	12	71	24	\$211.53	OC10	15000
	38103170	Unit, SYN1324-18, T15 - Blank	SYN132418-T15	Gray	18	75	16	\$222.61	OC10	15000
	38103240	Unit, SYN1324-24, T15 - Blank	SYN132424-T15	Gray	24	80	12	\$244.68	OC10	15000
Body - 1324										
T15	32132101	Box, SYN1324 T 12" Duo	SYN1324TBOX12	Gray	12	33	24	\$115.13	OC10	15000
	32136101	Box, SYN1324 T 18" Duo	SYN1324TBOX18	Gray	18	37	16	\$126.21	OC10	15000
	32140101	Box, SYN1324 T 24" Duo	SYN1324TBOX24	Gray	24	42	12	\$148.28	OC10	15000
	32141101	Box, SYN1324 T 30" Duo (2)	SYN1324T 2 STKDBXS	Gray	30	70	8	\$268.26	OC10	15000
	32142101	Box, SYN1324 T 36" Duo (2)	SYN1324T 2 STKDBXS	Gray	36	74	8	\$274.65	OC10	15000
Lid - 1324										
T15	31150121	Lid, SYN1324 T - No Mark	SYN1324T000	Gray	-	38	65	\$78.20	OC10	15000
	31151721	Lid, SYN1324 T - Irrigation	SYN1324T005	Gray	-	38	65	\$78.20	OC10	15000

Synertech - 1730

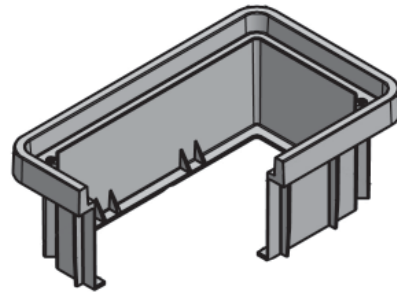
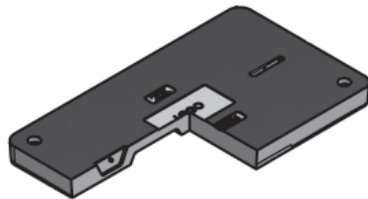
Duo Mold



Medium Duty
Non-deliberate Traffic



Tier 15*



*Products are rated by the lowest component rating. A tier 15 cover with a tier 22 body is rated tier 15. A tier 22 cover with a tier 22 body is rated tier 22.

See Accessories Section in the Back of this Manual for Options, Hardware, Specialty Markings and Other Accessories

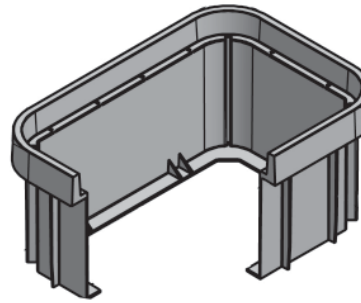
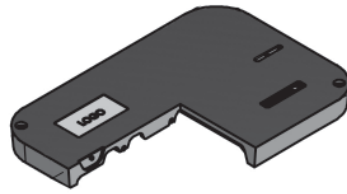
Rating	Part#	Description 1	Description 2	Color	Depth	Item Weight	Pallet Qty	List Price	Line Item Discount	Design Load
Unit - 1730										
T15	38104100	Unit, SYN1730-12, T15 - Blank	SYN173012-T15	Gray	12	115	12	\$285.41	OC10	15000
	38104170	Unit, SYN1730-18, T15 - Blank	SYN173018-T15	Gray	18	122	8	\$306.71	OC10	15000
	38104240	Unit, SYN1730-24, T15 - Blank	SYN173024-T15	Gray	24	127	6	\$339.46	OC10	15000
Body - 1730										
T15	32144101	Box, SYN1730 T 12" Duo	SYN1730TBOX12	Gray	12	42	12	\$144.24	OC10	15000
	32148101	Box, SYN1730 T 18" Duo	SYN1730TBOX18	Gray	18	49	8	\$165.54	OC10	15000
	32152101	Box, SYN1730 T 24" Duo	SYN1730TBOX24	Gray	24	54	6	\$198.29	OC10	15000
	32154101	Box, SYN1730 T 30" Duo (2)	SYN1730T 2 STKDBXS	Gray	30	91	4	\$334.10	OC10	15000
	32156101	Box, SYN1730 T 36" Duo (2)	SYN1730T 2 STKDBXS	Gray	36	98	4	\$344.78	OC10	15000
	32157101	Box, SYN1730 T 42" Duo (2)	SYN1730T 2 STKDBXS	Gray	42	103	2	\$371.08	OC10	15000
Lid - 1730										
T15	31200121	Lid, SYN1730 T - No Mark	SYN1730T000	Gray	-	73	33	\$122.97	OC10	15000
	31201721	Lid, SYN1730 T - Irrigation	SYN1730T005	Gray	-	73	33	\$122.97	OC10	15000

Synertech - 2436

Duo Mold

 **Heavy Duty**
Non-deliberate Traffic

 **Tier 22***



*Products are rated by the lowest component rating. A tier 15 cover with a tier 22 body is rated tier 15. A tier 22 cover with a tier 22 body is rated tier 22.

See Accessories Section in the Back of this Manual for Options, Hardware, Specialty Markings and Other Accessories

RATING	Part#	Description 1	Description 2	Color	Depth	Item Weight	Pallet Qty	List Price	Line Item Discount	Design Load
Unit - 2436										
T22	38104370	Unit, SYN2436-18, T22 - Blank	SYN243618-T22	Gray	18	227	4	\$520.12	OC10	22500
	38104440	Unit, SYN2436-24, T22 - Blank	SYN243624-T22	Gray	24	238	3	\$551.90	OC10	22500
	38104510	Unit, SYN2436-36, T22 - Blank	SYN243630-T22	Gray	36	259	2	\$638.91	OC10	22500

Body - 2436										
T22	32164101	Box, SYN2436 T 18" Duo	SYN2436TBOX18	Gray	18	80	4	\$256.35	OC10	22500
	32168101	Box, SYN2436 T 24" Duo	SYN2436TBOX24	Gray	24	91	3	\$288.13	OC10	22500
	32172101	Box, SYN2436 T 36" Duo	SYN2436TBOX36	Gray	36	112	2	\$375.14	OC10	22500
	32173101	Box SYN2436 T 42" DUO (2)	SYN2436T 2 STKDBXS	Gray	42	171	1	\$606.67	OC10	22500
	32174101	Box, SYN2436 T 48" Duo (2)	SYN2436T 2 STKDBXS	Gray	48	181	1	\$639.79	OC10	22500
	32175101	Box, SYN2436 T 54" Duo (2)	SYN2436T 2 STKDBXS	Gray	54	240	1	\$683.92	OC10	22500
	32176101	Box, SYN2436 T 60" Duo (2)	SYN2436T 2 STKDBXS	Gray	60	262	1	\$709.28	OC10	22500
	32177101	Box, SYN2436 T 72" Duo (2)	SYN2436T 2 STKDBXS	Gray	72	320	1	\$772.29	OC10	22500

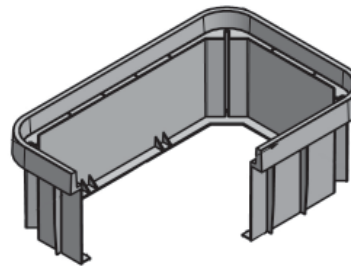
Lid - 2436										
T22	31250121	Lid, SYN2436 T - No Mark	SYN2436T000	Gray	-	147	20	\$232.02	OC10	22500
	31251721	Lid, SYN2436 T - Irrigation	SYN2436T005	Gray	-	147	20	\$232.02	OC10	22500

Synertech - 3048

Duo Mold

 **Heavy Duty**
Non-deliberate Traffic

 **Tier 22***



*Products are rated by the lowest component rating. A tier 15 cover with a tier 22 body is rated tier 15. A tier 22 cover with a tier 22 body is rated tier 22.

See Accessories Section in the Back of this Manual for Options, Hardware, Specialty Markings and Other Accessories

RATING	Part#	Description 1	Description 2	Color	Depth	Item Weight	Pallet Qty	List Price	Line Item Discount	Design Load
Unit - 3048										
T22	38104580	Unit, SYN3048-18, T22 - Blank	SYN304818-T22	Gray	18	332	4	\$778.69	OC10	22500
	38104650	Unit, SYN3048-24, T22 - Blank	SYN304824-T22	Gray	24	346	3	\$828.17	OC10	22500
	38104720	Unit, SYN3048-36, T22 - Blank	SYN304836-T22	Gray	36	373	2	\$972.29	OC10	22500

Body - 3048										
T22	32180101	Box, SYN3048 T 18" Duo	SYN3048TBOX18	Gray	18	119	4	\$390.82	OC10	22500
	32184101	Box, SYN3048 T 24" Duo	SYN3048TBOX24	Gray	24	145	3	\$440.30	OC10	22500
	32188101	Box, SYN3048 T 36" Duo	SYN3048TBOX36	Gray	36	160	2	\$584.42	OC10	22500
	32185101	Box, SYN3048 T 42" Duo (2)	SYN3048T 2 STKDBXS	Gray	42	252	2	\$846.01	OC10	22500
	32187101	Box, SYN3048 T 48" Duo (2)	SYN3048T 2 STKDBXS	Gray	48	265	1	\$893.95	OC10	22500
	32178101	Box SYN 3048-60 PC Body Gray Duo Mold	Syn3048PCBox60Duo	Gray	60	354	1	\$1,023.55	OC10	22500
	32179101	Box, SYN3048 T 72" Duo (2)	SYN3048T 2 STKDBXS	Gray	72	320	1	\$1,153.58	OC10	22500

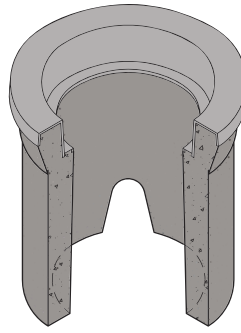
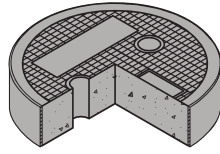
Lid - 3048										
T22	31300121	Lid, SYN3048 T - No Mark	SYN3048T000	Gray	-	213	12	\$356.12	OC10	22500
	31301721	Lid, SYN3048 T - Irrigation	SYN3048T005	Gray	-	213	12	\$356.12	OC10	22500

Christy - F08

Concrete

 **Light Duty**
Pedestrian Only

 **Pedestrian**



RATING	Part#	Description 1	Description 2	Color	Depth	Item Weight	Pallet Qty	List Price	Line Item Discount	Design Load
--------	-------	---------------	---------------	-------	-------	-------------	------------	------------	--------------------	-------------

Body - F08 with Plastic Cap

P	1000370	Box, F08 Curb Valve	F08BOX	Gray	12	34	48	\$14.98	OC01	300 lb/ft ²
---	---------	---------------------	--------	------	----	----	----	---------	------	------------------------

Lid - F08 with Plastic Cap

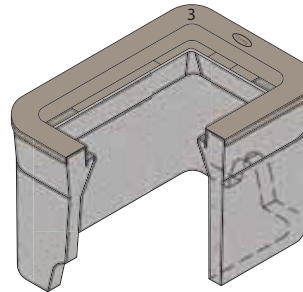
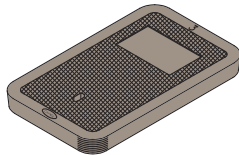
Ped	1008820	Lid, F08 R - "Irrigation"	F08R005	Gray	-	8	100	\$12.68	OC01	300 lb/ft ²
	1008980	Lid, F08 R - No Mark	F08R000	Gray	-	8	100	\$12.68	OC01	300 lb/ft ²

Christy - B03

Concrete

 **Light Duty**
Pedestrian Only

 **Pedestrian**



RATING	Part#	Description 1	Description 2	Color	Depth	Item Weight	Pallet Qty	List Price	Line Item Discount	Design Load
--------	-------	---------------	---------------	-------	-------	-------------	------------	------------	--------------------	-------------

Body - B03 with Plastic Cap

P	1000000	Box, B03 Utility	B03BOX	Gray	12	88	28	\$22.61	OC01	300 lb/ft ²
---	---------	------------------	--------	------	----	----	----	---------	------	------------------------

Lid - B03

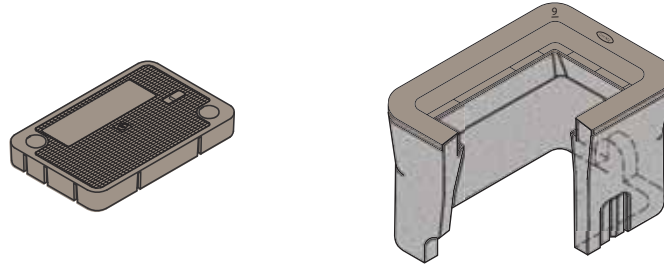
P	1001060	Lid, B03 D - "Irrigation"	B03D005	Gray	-	12	120	\$11.88	OC01	300 lb/ft ²
	1001170	Lid, B03 D - No Mark	B03D000	Gray	-	12	120	\$11.88	OC01	300 lb/ft ²

Christy - B09

Concrete

 **Light Duty**
Pedestrian Only

 **Pedestrian**



Rating	Part#	Description 1	Description 2	Color	Depth	Item Weight	Pallet Qty	List Price	Line Item Discount	Design Load
--------	-------	---------------	---------------	-------	-------	-------------	------------	------------	--------------------	-------------

Body - B09 with Plastic Cap

P	1000005	Box, B09 Utility	B09BOX	Gray	12	92	28	\$25.42	OC01	300 lb/ft ²
---	---------	------------------	--------	------	----	----	----	---------	------	------------------------

Extension - B09

P	1000045	Extension, B09 X 12"	B09X12	Gray	12	87	28	\$19.85	OC01	300 lb/ft ²
---	---------	----------------------	--------	------	----	----	----	---------	------	------------------------

Lid - N09 with Plastic Cap

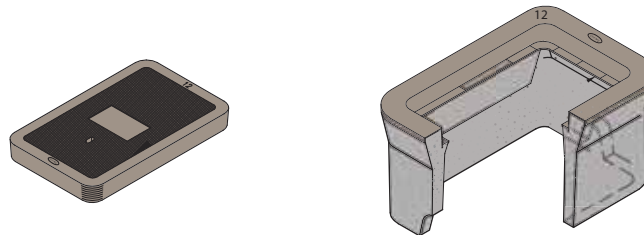
Ped	1020000	Lid, N09 R - No Mark	N09R000	Gray	-	23	60	\$19.55	OC01	300 lb/ft ²
	1020055	Lid, N09 R - "Irrigation"	N09R005	Gray	-	23	60	\$19.55	OC01	300 lb/ft ²

Christy - B12

Concrete

 **Light Duty**
Pedestrian Only

 **Pedestrian**



Rating	Part#	Description 1	Description 2	Color	Depth	Item Weight	Pallet Qty	List Price	Line Item Discount	Design Load
--------	-------	---------------	---------------	-------	-------	-------------	------------	------------	--------------------	-------------

Body - B12 with Plastic Cap

P	1000050	Box, B12 Utility	B12BOX	Gray	12	110	20	\$26.25	OC01	300 lb/ft ²
---	---------	------------------	--------	------	----	-----	----	---------	------	------------------------

Extension - B12

P	1000070	Extension, B12 X 12"	B12X12	Gray	12	103	20	\$25.14	OC01	300 lb/ft ²
---	---------	----------------------	--------	------	----	-----	----	---------	------	------------------------

Lid - B12

Ped	1002570	Lid, B12 D - "Irrigation"	B12D005	Gray	-	27	40	\$19.73	OC01	300 lb/ft ²
	1002640	Lid, B12 D - No Mark	B12D000	Gray	-	27	40	\$19.73	OC01	300 lb/ft ²

Christy - B16

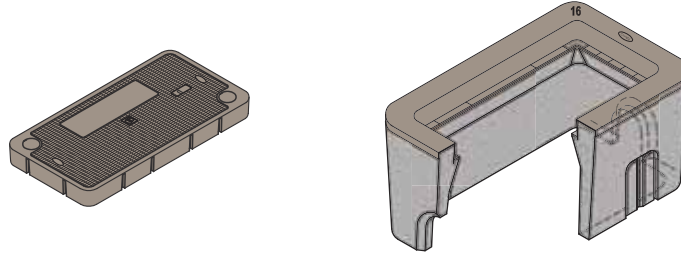
Concrete



Light Duty
Pedestrian Only



Pedestrian



RATING	Part#	Description 1	Description 2	Color	Depth	Item Weight	Pallet Qty	List Price	Line Item Discount	Design Load
--------	-------	---------------	---------------	-------	-------	-------------	------------	------------	--------------------	-------------

Body - B16 with Plastic Cap

P	1000075	Box, B16 Utility	B16BOX	Gray	12	134	20	\$31.91	OC01	300 lb/ft ²
---	---------	------------------	--------	------	----	-----	----	---------	------	------------------------

Extension - B16

P	1000100	Extension, B16 X 12	B16X12	Gray	12	113	20	\$26.04	OC01	300 lb/ft ²
---	---------	---------------------	--------	------	----	-----	----	---------	------	------------------------

Lid - N16 with Plastic Cap

Ped	1020400	Lid, N16 R - No Mark	N16R000	Gray	-	36	40	\$26.81	OC01	300 lb/ft ²
	1020519	Lid, N16 R - "Irrigation"	N16R005	Gray	-	36	40	\$26.81	OC01	300 lb/ft ²

Christy - B24

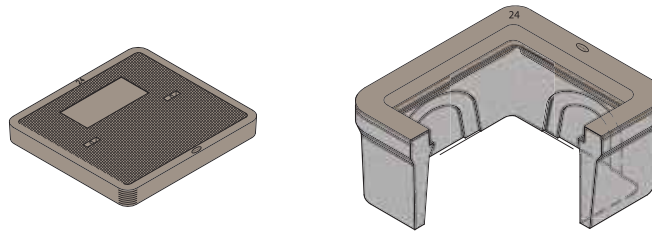
Concrete



Light Duty
Pedestrian Only



Pedestrian



RATING	Part#	Description 1	Description 2	Color	Depth	Item Weight	Pallet Qty	List Price	Line Item Discount	Design Load
--------	-------	---------------	---------------	-------	-------	-------------	------------	------------	--------------------	-------------

Body - B24 with Plastic Cap

P	1000110	Box, B24 Dual Utility	B24BOX	Gray	12	148	12	\$40.47	OC01	300 lb/ft ²
---	---------	-----------------------	--------	------	----	-----	----	---------	------	------------------------

Extension - B24

P	1000113	Extension, B24 x 12"	B24X12	Gray	12	164	12	\$38.48	OC01	300 lb/ft ²
---	---------	----------------------	--------	------	----	-----	----	---------	------	------------------------

Lid - B24

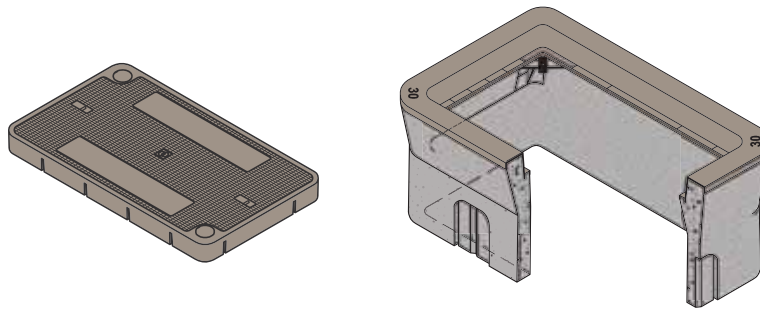
Ped	1003570	Lid, B24 D - "Irrigation"	B24D005	Gray	-	56	20	\$34.17	OC01	300 lb/ft ²
	1003640	Lid, B24 D - No Mark	B24D000	Gray	-	56	20	\$34.17	OC01	300 lb/ft ²

Christy - N30

Concrete

 **Light Duty**
Pedestrian Only

 **Pedestrian**



RATING	Part#	Description 1	Description 2	Color	Depth	Item Weight	Pallet Qty	List Price	Line Item Discount	Design Load
--------	-------	---------------	---------------	-------	-------	-------------	------------	------------	--------------------	-------------

Body - N30 with Plastic Cap

P	1000115	Box, N30 Electric	N30BOX	Gray	12	134	16	\$36.46	OC01	300 lb/ft ²
---	---------	-------------------	--------	------	----	-----	----	---------	------	------------------------

Lid - N30 with Plastic Cap

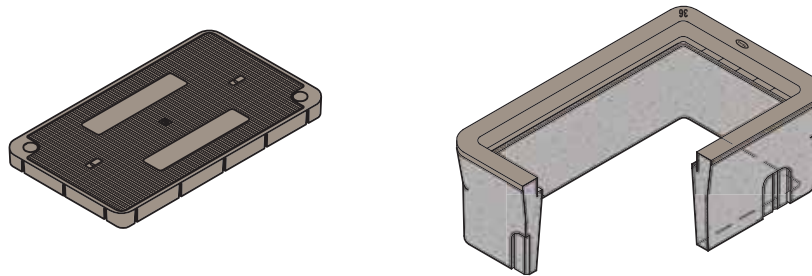
Ped	1020700	Lid, N30 R - No Mark	N30R000	Gray	-	44	30	\$33.97	OC01	300 lb/ft ²
	1020780	Lid, N30 R - "Irrigation"	N30R005	Gray	-	44	30	\$33.97	OC01	300 lb/ft ²

Christy - N36

Concrete

 **Light Duty**
Pedestrian Only

 **Pedestrian**



RATING	Part#	Description 1	Description 2	Color	Depth	Item Weight	Pallet Qty	List Price	Line Item Discount	Design Load
--------	-------	---------------	---------------	-------	-------	-------------	------------	------------	--------------------	-------------

Body - N36 with Plastic Cap

P	1000155	Box, N36 Utility	N36BOX	Gray	12	175	8	\$49.06	OC01	300 lb/ft ²
---	---------	------------------	--------	------	----	-----	---	---------	------	------------------------

Lid - N36 with Plastic Cap

Ped	1021000	Lid, N36 R - No Mark	N36R000	Gray	-	76	10	\$48.23	OC01	300 lb/ft ²
	1021062	Lid, N36 R - "Irrigation"	N36R005	Gray	-	76	10	\$48.23	OC01	300 lb/ft ²

Christy - B65

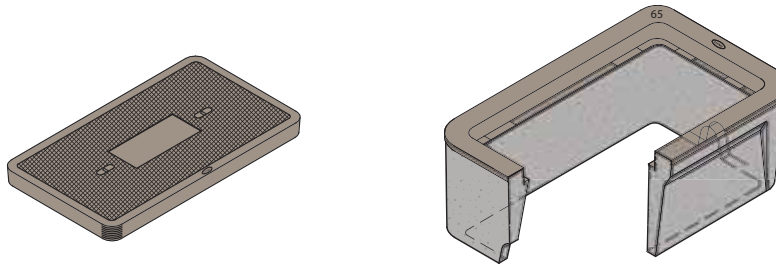
Concrete



Light Duty
Pedestrian Only



Pedestrian



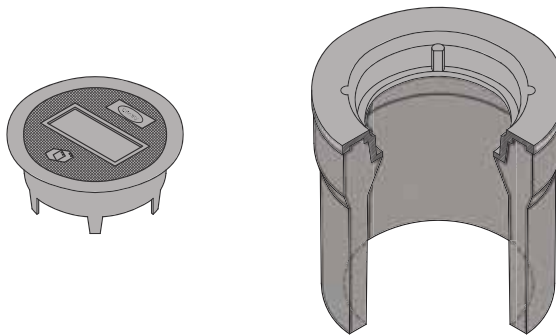
RATING	Part#	Description 1	Description 2	Color	Depth	Item Weight	Pallet Qty	List Price	Line Item Discount	Design Load
Body - B65 with Plastic Cap										
P	1000190	Box, B65 Utility	B65BOX	Gray	12	164	8	\$44.29	OC01	300 lb/ft ²
Extension - B65										
P	1000195	Extension, B65 X 12"	B65X12	Gray	12	141	8	\$37.72	OC01	300 lb/ft ²
Lid - B65										
P	1006750	Lid, B65 D - No Mark	B65D000	Gray	-	65	10	\$40.10	OC01	300 lb/ft ²

Christy - G03

Concrete



Traffic Rated
Continuous Roadway Traffic



RATING	Part#	Description 1	Description 2	Color	Depth	Item Weight	Pallet Qty	List Price	Line Item Discount	Design Load
Body - G03										
TR	1000400	Box, G03 Traffic Valve	G03BOX	Gray	12	70	36	\$40.99	OC01	16,000
Lid - G03										
TR	3000620	Lid, G03 C - No Mark	G03C000IMPT	Black	-	15	-	\$24.05	OC01	16,000

Christy - G05

Concrete



Traffic Rated
Continuous Roadway Traffic



Part#	Description 1	Description 2	Color	Depth	Item Weight	Pallet Qty	List Price	Line Item Discount	Design Load
-------	---------------	---------------	-------	-------	-------------	------------	------------	--------------------	-------------

Body - G05

1000415	Box, G05 T Bolt Down Traffic Valve	G05TBOX	Gray	12	66	36	\$33.96	OC01	16,000
---------	------------------------------------	---------	------	----	----	----	---------	------	--------

Extension - G05

1000445	Extension, G05 X 12"	G05X12	Gray	12	47	36	\$9.13	OC01	16,000
---------	----------------------	--------	------	----	----	----	--------	------	--------

Lid - G05

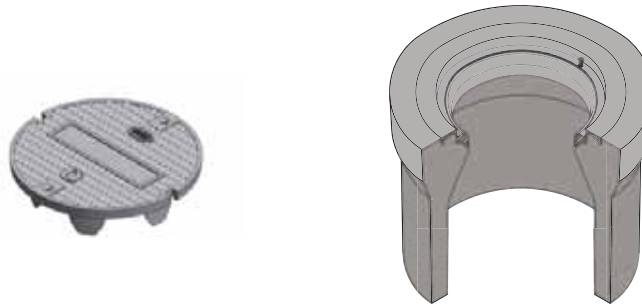
3001100	Lid, G05 CT Bolt Down - No Mark	G05CT000	Black	-	10	-	\$23.60	OC01	16,000
---------	---------------------------------	----------	-------	---	----	---	---------	------	--------

Christy - G08

Concrete



Traffic Rated
Continuous Roadway Traffic



Part#	Description 1	Description 2	Color	Depth	Item Weight	Pallet Qty	List Price	Line Item Discount	Design Load
-------	---------------	---------------	-------	-------	-------------	------------	------------	--------------------	-------------

Body - G08

1000435	Box, G08 T Bolt Down Traffic Valve	G08TBOX	Gray	12	93	10	\$57.33	OC01	16,000
---------	------------------------------------	---------	------	----	----	----	---------	------	--------

Extension - G08

1000455	Extension, G08 X 12"	G08X12	Gray	12	47	36	\$22.96	OC01	16,000
---------	----------------------	--------	------	----	----	----	---------	------	--------

Lid - G08

3001100	Lid, G05 CT Bolt Down - No Mark	G05CT000	Black	-	10	-	\$23.60	OC01	16,000
---------	---------------------------------	----------	-------	---	----	---	---------	------	--------

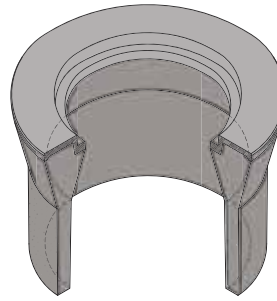
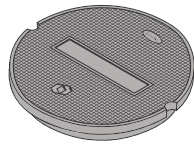


Christy - G12

Concrete



Traffic Rated
Continuous Roadway Traffic



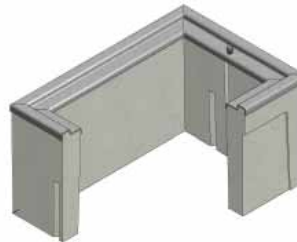
RATING	Part#	Description 1	Description 2	Color	Depth	Item Weight	Pallet Qty	List Price	Line Item Discount	Design Load
Body - G12										
TR	1000450	Box, G12 Traffic Valve	G12BOX	Gray	12	109	10	\$134.48	OC01	16,000
Extension - G12										
TR	1000456	Extension, G12 X 12"	G12X12	Gray	12	110	10	\$62.41	OC01	16,000
Lid - G12										
TR	3001170	Lid, G12 C - No Mark	G12C000	Black	-	25	-	\$114.23	OC01	16,000

Christy - B1017

Concrete



Traffic Rated
Continuous Roadway Traffic



RATING	Part#	Description 1	Description 2	Color	Depth	Item Weight	Pallet Qty	List Price	Line Item Discount	Design Load
Body - B1017										
TR	1000275	Box, B1017 Utility H20 Load	B1017BOX	Gray	12	136	20	\$91.71	OC01	16,000
Extension - B1017										
TR	1000280	Extension, B1017 X 12"	B1017X12	Gray	12	129	20	\$36.61	OC01	16,000
Lid - B1017										
TR	2000700	Cover, B1017 51JH - No Mark	B101751JH000	Black	-	44	-	\$137.89	OC01	16,000
TR	2000780	Cover, B1017 51JH Galv - No Mark	B101751JH000G	Galv	-	44	-	\$161.10	OC01	16,000



Christy - B1324

Concrete



Traffic Rated
Continuous Roadway Traffic



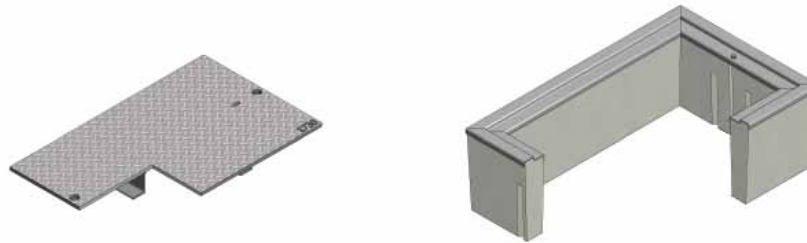
Part#	Description 1	Description 2	Color	Depth	Item Weight	Pallet Qty	List Price	Line Item Discount	Design Load
Body - B1324									
1000285	Box, B1324 Utility H20 Load	B1324BOX	Gray	12	168	16	\$123.32	OC01	16,000
Extension - B1324									
1000290	Extension, B1324 X 12"	B1324X12	Gray	12	163	16	\$51.51	OC01	16,000
Lid - B1324									
2001130	Cover, B1324 51JH - No Mark	B132451JH000	Steel	-	70	-	\$196.20	OC01	16,000
2001330	Cover, B1324 51JH Galv - No Mark	B132451JH000G	Galv	-	70	-	\$249.07	OC01	16,000

Christy - B1730

Concrete



Traffic Rated
Continuous Roadway Traffic



Part#	Description 1	Description 2	Color	Depth	Item Weight	Pallet Qty	List Price	Line Item Discount	Design Load
Body - B1730									
1000295	Box, B1730 Utility H20 Load	B1730BOX	Gray	12	280	6	\$239.33	OC01	16,000
Extension - B1730									
1000300	Extension, B1730 X 12"	B1730X12	Gray	12	250	6	\$103.03	OC01	16,000
Lid - B1730									
2001890	Cover, B1730 51JH - No Mark	B173051JH000	Steel	-	111	-	\$338.83	OC01	16,000
2002030	Cover, B1730 51JH Galv - No Mark	B173051JH000G	Galv	-	111	-	\$370.06	OC01	16,000



Christy - B2436

Concrete



Traffic Rated
Continuous Roadway Traffic



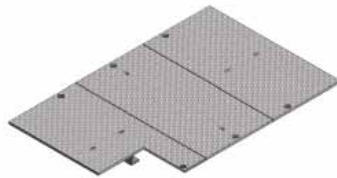
RATING	Part#	Description 1	Description 2	Color	Depth	Item Weight	Pallet Qty	List Price	Line Item Discount	Design Load
Body - B2436										
TR	1000305	Box, B2436 Utility H20 Load	B2436BOX	Gray	12	258	3	\$293.17	OC01	16,000
Extension - B2436										
TR	1000310	Extension, B2436 X 12"	B2436X12	Gray	12	250	3	\$131.55	OC01	16,000
Lid - B2436										
TR	2002240	Cover, B2436 52JH - No Mark	B243652JH000	Steel	-	328	-	\$545.27	OC01	16,000
TR	2002300	Cover, B2436 52JH Galv - No Mark	B243652JH000G	Galv	-	328	-	\$708.23	OC01	16,000

Christy - B3048

Concrete



Traffic Rated
Continuous Roadway Traffic



RATING	Part#	Description 1	Description 2	Color	Depth	Item Weight	Pallet Qty	List Price	Line Item Discount	Design Load
Body - B3048										
TR	1000315	Box, B3048 Utility H20 Load	B3048BOX	Gray	12	458	3	\$315.55	OC01	16,000
Extension - B3048										
TR	1000320	Extension, B3048 X 12"	B3048X12	Gray	12	474	3	\$147.47	OC01	16,000
Lid - B3048										
TR	2002890	Cover, B3048 53JH - No Mark	B304853JH000	Steel	-	445	-	\$888.08	OC01	16,000
TR	2002930	Cover, B3048 53JH Galv - SPECIAL	B304853JH099G	Galv	-	445	-	\$1,181.51	OC01	16,000



HosEnclose™

 **Light Duty**
Pedestrian Only

 **Pedestrian**



RATING	Part#	Description 1	Description 2	Color	Depth	Item Weight	Pallet Qty	List Price	Line Item Discount	Design Load
HosEnclose Underground Hose Storage System										
P	38001001	HosEnclose Green 1017	50 ft 11/2 in Hose Brass Nozzle	Green	12	13	30	\$257.46	OC06	300 lb/ft ²

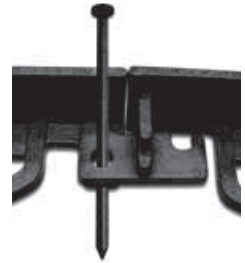
Landscape Edge™, Paver Frame™ & Oldcastle® Spikes



Landscape Edge



Paver Frame



Oldcastle Spike

Part#	Description 1	Description 2	Color	Depth	Item Weight	Pallet Qty	List Price	Line Item Discount	Design Load
-------	---------------	---------------	-------	-------	-------------	------------	------------	--------------------	-------------

Landscape Edge Restraints

38006210	Oldcastle Landscape Edging-Mstr Crtn (12/ea)	Master Carton	Black	-	44.6	-	\$273.01	OC06	-
38006220	Oldcastle Landscape Edging-Pallet (144/ea)	Pallet	Black	-	-	-	\$3,112.32	OC06	-

Paver Frame Restraints

38006115	Oldcastle PAVER FRAME 1 Pc.	Paver Frame	Black	-	1.5	-	\$10.75	OC06	-
----------	-----------------------------	-------------	-------	---	-----	---	---------	------	---

Oldcastle Spikes

80006010	Oldcastle Spikes 8 ct. Mstr Crtn (24 bags)	Carton (24 bags of 8)	Black	8	-	-	\$122.22	OC09	-
----------	--	-----------------------	-------	---	---	---	----------	------	---

Hardware

PARTING	Part#	Description 1	Description 2	For Use With:	List Price	Line Item Discount	Design Load
Carson Hardware							
	80002006	1x HBlit+ Wsh+ Rcfnt+ Clip	3/8"x2.5SSTCapt1220/1419 XX-50	1015, 1220, 1419	\$4.77	OC09	-
	80002008	1x HBlit+Wsh+ Rcfnt+Spring	3/8"-16 x 2.5 Capt 0910 Only	0910	\$5.08	OC09	-
	80002025	2x Hexbolt + 2x Wash SST	3/8" 16 x 2"	1015, 1419	\$9.79	OC09	-
	80002007	1x LgPnta+ Wsh+ Rcfnt+Clip	3/8" x 2.5 SST Cap 1220/1419	1015, 1220, 1419	\$8.61	OC09	-

H-Series Hardware

	80002005	Hex Bolt + Washer SST	Hex 3/8" 16 x 2-1/2"	0910 (Replacement for: 1324, 1730, 2424)	\$3.50	OC09	-
	80002025	2x Hexbolt + 2x Wash SST	Hex 3/8" 16 x 2"	1118, 1324, 1730, 2424	\$9.79	OC09	-
	80002052	2x Hexbolt + 2x Washer SST	Hex 1/2" 13 x 1-1/4"	1212	\$3.72	OC09	-
	80002033	2x Hexbolt + 2x Washer SST	Hex 1/2" 13 x 2-1/2"	1118, 1324, 1730, 2424	\$8.20	OC09	-
	80002029	2x Hexbolt + 2x Washer SST	Hex 1/2" 13 x 3-1/2"	2436, 3048, 3060, 3636, 4848	\$16.75	OC09	-
	80002026	2x LgPnta + 2x Washer SST	Penta 3/8" 16 x 2"	1118, 1324, 1730, 2424	\$14.94	OC09	-
	80002054	2x LgPnta + 2x Washer SST	Penta 1/2" 13 x 1-1/4"	1212	\$6.44	OC09	-
	80002034	2x LgPnta + 2x Washer SST	Penta 1/2" 13 x 2-1/2"	1118, 1324, 1730, 2424	\$9.89	OC09	-
	80002030	2x LgPnta + 2x Washer SST	Penta 1/2" 13 x 3-1/2"	2436, 3048, 3060, 3636, 4848	\$20.62	OC09	-

Synertech Hardware

	80002052	2x Hexbolt + 2x Washer SST	Hex 1/2" 13 x 1-1/4"	1212	\$3.72	OC09	-
	80002033	2x Hexbolt + 2x Washer SST	Hex 1/2" 13 x 2-1/2"	1118, 1324, 1730	\$8.20	OC09	-
	80002029	2x Hexbolt + 2x Washer SST	Hex 1/2" 13 x 3-1/2"	2436, 3048, 3636	\$16.75	OC09	-
	80002054	2x LgPnta + 2x Washer SST	Penta 1/2" 13 x 1-1/4"	1212	\$6.44	OC09	-
	80002034	2x LgPnta + 2x Washer SST	Penta 1/2" 13 x 2-1/2"	1118, 1324, 1730	\$9.89	OC09	-
	80002030	2x LgPnta + 2x Washer SST	Penta 1/2" 13 x 3-1/2"	2436, 3048, 3660	\$20.62	OC09	-

H-Series Steel Lids

PARTING	Part#	Description 1	Description 2	For Use With:	List Price	Line Item Discount	Design Load
Steel Lids							
	11184054	1118 Steel T Cover Gal Blank	PC Box	1118	\$163.14	OC01	-
	13244180	1324 Steel T Cover Gal Blank	PC Box	1324	\$385.38	OC01	-
	17304186	1730 Steel T Cover Gal Blank	PC Box	1730	\$388.00	OC01	-
	24364011	2436 Steel T Cover Gal Blank	PC Box	2436	\$677.69	OC01	-
	30484019	3048 Steel T Cover Gal Blank	PC Box	3048	\$790.00	OC01	-
	30604013	3060 Steel T Cover Blank	2 Piece Over Under	3060	\$902.20	OC01	-

For solid bottom, dividers, and other H-Series options contact customer service.

H-Series & Synertech Marking Plates

PARTING	Part#	Description 1	Description 2	Color/ Item	Depth	Item Weight	Pallet Qty	List Price	Line Item Discount	Design Load
Marking Plate										
	31901000	Marking Plate-Blank	4"x8"	-	-	-	-	\$7.70	OC10	-
	31901090	Marking Plate-Special	4"x8"	-	-	-	-	\$7.70	OC10	-
Marking Plate Adhesive										
	31900100	Sealant, Surebond SB-12 10.2oz Cartridge	10 Lid Coverage	-	-	-	-	\$13.99	OC09	-

H-Series Marking Plate Lids

RATING	Part#	Description 1	Description 2	Color	Depth	Item Weight	Pallet Qty	List Price	Line Item Discount	Design Load
1118 - Marking Plate Lid										
15	11184603	Lid, PC1118-T, T15 - Marking Plate Required	PC1118T-T15	Gray	-	20	60	\$79.93	OC03	15000
22	11184614	Lid, PC1118-T, T22 - Marking Plate Required	PC1118T-T22	Gray	-	28	60	\$109.54	OC03	22500
1324 - Marking Plate Lid										
15	13244600	Lid, PC1324-D, T15 - Marking Plate Required	PC1324D-T15	Gray	-	38	30	\$119.90	OC03	15000
	13244604	Lid, PC1324-T, T15 - Marking Plate Required	PC1324T-T15	Gray	-	38	30	\$119.90	OC03	15000
22	13244614	Lid, PC1324-T, T22 - Marking Plate Required	PC1324T-T22	Gray	-	51	30	\$163.84	OC03	22500
1730 - Marking Plate Lid										
15	17304600	Lid, PC1730-D, T15 - Marking Plate Required	PC1730D-T15	Gray	-	62	25	\$138.34	OC03	15000
	17304605	Lid, PC1730-T, T15 - Marking Plate Required	PC1730T-T15	Gray	-	62	25	\$138.34	OC03	15000
22	17304603	Lid, PC1730-D, T22 - Marking Plate Required	PC1730D-T22	Gray	-	85	25	\$188.66	OC03	22500
	17304615	Lid, PC1730-T, T22 - Marking Plate Required	PC1730T-T22	Gray	-	85	25	\$188.66	OC03	22500
2424 - Marking Plate Lid										
15	24244601	Lid, PC2424-D, T15 - Marking Plate Required	PC2424D-T15	Gray	-	75	20	\$194.38	OC03	15000
	24244606	Lid, PC2424-T, T15 - Marking Plate Required	PC2424T-T15	Gray	-	75	20	\$194.38	OC03	15000
2436 - Marking Plate Lid										
15	24364600	Lid, PC2436-D, T15 - Marking Plate Required	PC2436D-T15	Gray	-	150	10	\$242.76	OC03	15000
	24364605	Lid, PC2436-T, T15 - Marking Plate Required	PC2436T-T15	Gray	-	150	10	\$242.76	OC03	15000
22	24364603	Lid, PC2436-D, T22 - Marking Plate Required	PC2436D-T22	Gray	-	204	10	\$329.53	OC03	22500
3048 - Marking Plate Lid										
15	30484603	Lid, PC3048-T, T15 - Marking Plate Required	PC3048T-T15	Gray	-	220	10	\$453.71	OC03	15000
22	30484614	Lid, PC3048-T, T22 - Marking Plate Required, 2pc	PC3048T-T22	Gray	-	338	10	\$577.93	OC03	22500

Standard Marking Plate: 4" x 8", 2 rows of lettering, max 13 characters each row. Options Available. Call Customer Service for Custom and Specialty Marking Orders

Synertech Marking Plate Lids

RATING	Part#	Description 1	Description 2	Color	Depth	Item Weight	Pallet Qty	List Price	Line Item Discount	Design Load
1118 - Marking Plate Lid										
15	31059821	Lid, SYN1118 T-Marking Plate Required	SYN1118T	Gray	-	26	26	\$55.09	OC10	15000
1212 - Marking Plate Lid										
15	31109821	Lid, SYN1212 T-Marking Plate Required	SYN1212T	Gray	-	15	160	\$40.06	OC10	15000
1324 - Marking Plate Lid										
15	31159821	Lid, SYN1324 T-Marking Plate Required	SYN1324T	Gray	-	42	65	\$78.20	OC10	15000
1730 - Marking Plate Lid										
15	31209821	Lid, SYN1730 T-Marking Plate Required	SYN1730T	Gray	-	64	33	\$122.97	OC10	15000
2436 - Marking Plate Lid										
22	31259821	Lid, SYN2436 T-Marking Plate Required	SYN2436T	Gray	-	125	20	\$232.02	OC10	22500
3048 - Marking Plate Lid										
22	31309821	Lid, SYN3048 T-Marking Plate Required	SYN3048T	Gray	-	193	12	\$356.12	OC10	22500

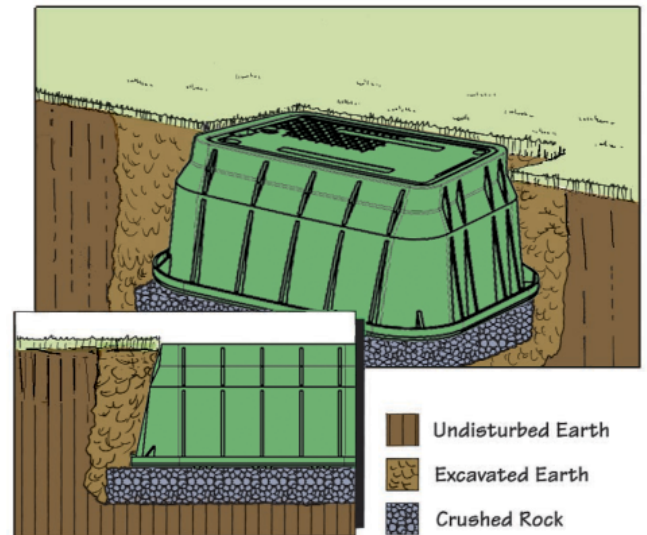
Standard Marking Plate: 4" x 8", 2 rows of lettering, max 13 characters each row. Options Available. Call Customer Service for Custom and Specialty Marking Orders

Light Duty Plastic Product

Typical grass surround installation

Crushed rock backfill is shown as specified in the Company's Installation Procedure. The tamped crushed rock supports the vault, preventing subsidence and allowing for drainage. The excavated spoils have been used for backfill.

Note the soil is free of rocks larger than three inches.

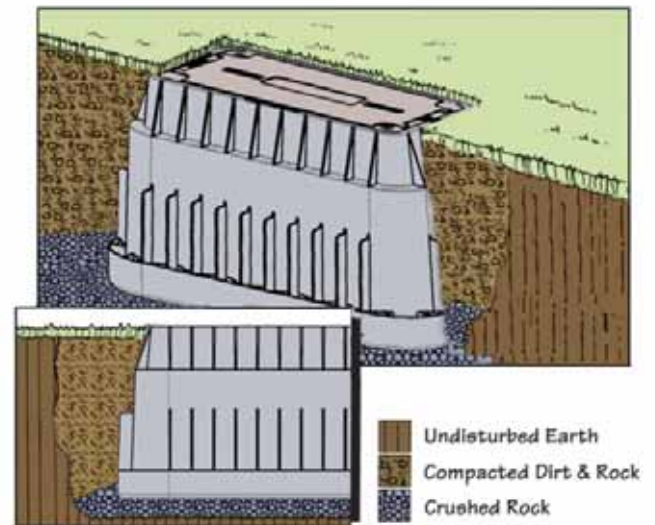


Light Duty Hybrid Product

Alternative for greenbelt location

Lateral load resistance is enhanced in this range of products. The polymer concrete cover offers an increased coefficient of friction (over HDPE) for foot traffic.

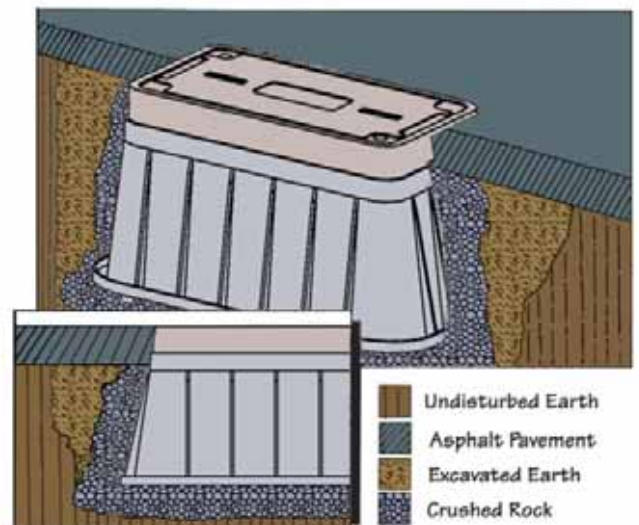
Note that backfill, although not crushed rock, is changed to specify compaction, thereby enhancing vault performance.



Light Duty Hybrid Product

Concrete or Asphalt Surround (shown)

Note compacted crushed rock surround. Dry mix could be added to crushed rock under "ring" to improve vertical load bearing.



CARSON® PLASTIC PRODUCTS ARE NOT INTENDED FOR INSTALLATION IN ANY DELIBERATE TRAFFIC AREA.

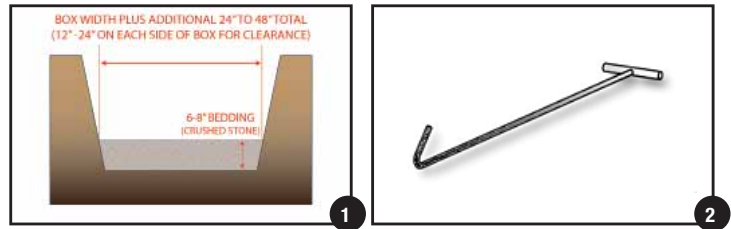
Oldcastle® underground enclosures are suitable for delivery to job sites on any construction vehicle. Enclosures can be safely handled by hand by the proper number of trained workers or proper lifting equipment for loading and unloading.

Site preparation

- Follow local guidelines and job requirements.

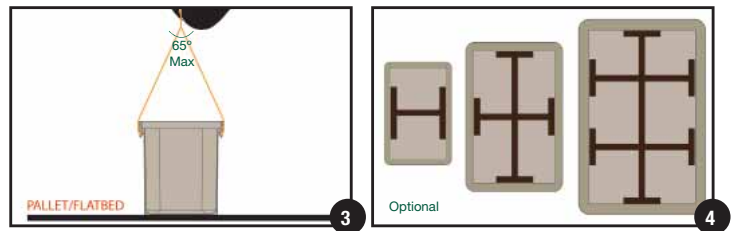
Excavation and preparation of enclosure hole (fig 1).

- Remove material to provide 1 – 2' of clearance all around the enclosure and 6" – 8" in additional depth allowing for bedding and rodent barrier.
- Place a suitable bedding material, such as crushed stone, at the base of the excavated hole.



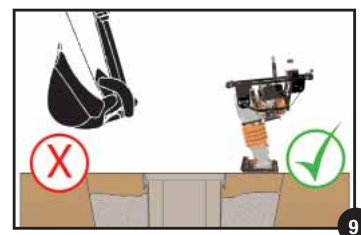
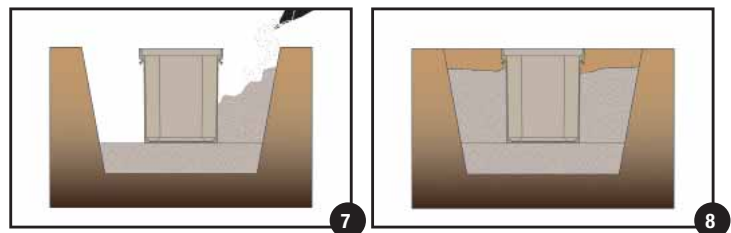
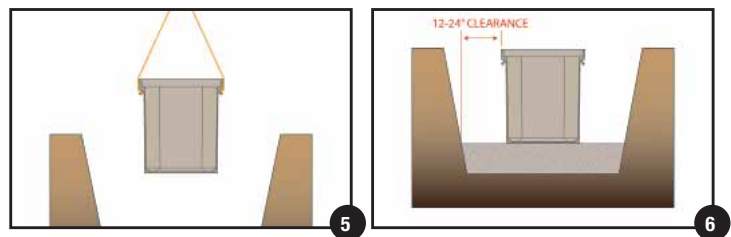
Removing enclosure from delivery vehicle and pallet.

- Remove shipping band from enclosure.
- Use proper hook to remove lid from the enclosure base (fig 2).
- Using proper lifting techniques, secure and remove box from truck. Lifting bolts are provided for boxes 2424 and larger (fig 3).
- The angle of the lifting lines should not exceed 65°.
- Optional : Install temporary brace supports in the interior of the enclosure to provide additional lateral rigidity and if 95% compaction is required (fig 4).



Enclosure placement into prepared hole.

- Reinstall the lid to the base of the enclosure prior to uniformly backfilling on all four sides. Nut, bolt threads, and cover seat should always be free of dirt and debris before tightening down the bolt.
- Bed the base of the hole with crushed stone. Then lift and place the enclosure into the bedded hole.
- Place crushed stone around the sides (fig 7 & 8).
- Position the enclosure to the proper grade level and check.
- Remove lid with proper lifting-eye tool.
- Make the necessary elevation adjustments and recheck the elevation.
- After the enclosure is set to the proper elevation, remove the temporary brace supports if used and reinstall the cover.
- Compact backfill per engineering specifications.
- Proper tamping tools such as a mechanical tamping device or hand operated device should be used. (fig 9)
- A hand shovel or backhoe should never be used for tamping as damage will occur.



Vibrator plate may also be used.

- 1** Synertech® underground enclosures can be delivered to the site on any construction maintenance vehicle and are easily handled by hand or boom truck for unloading.
-

- 2** Mark location and begin excavation, prepare excavation so there is room for at least 6" of bedding material. Depth of excavation = Box Height plus 6".
-

- 3** Place a suitable bedding material (compacted pea gravel or crushed rock) beneath the enclosure and level it to ensure that the enclosure is well supported beneath its walls. Install wire mesh on the level bedding material. Wire mesh is utilized to help prevent intrusion by pests and rodents after installation. On larger enclosures, utilize a boom to install enclosure into the excavated hole.
-

- 4** Install temporary supports in the interior of the underground enclosure to provide greater lateral rigidity. The number of supports varies depending on the size of Underground Enclosure.
-

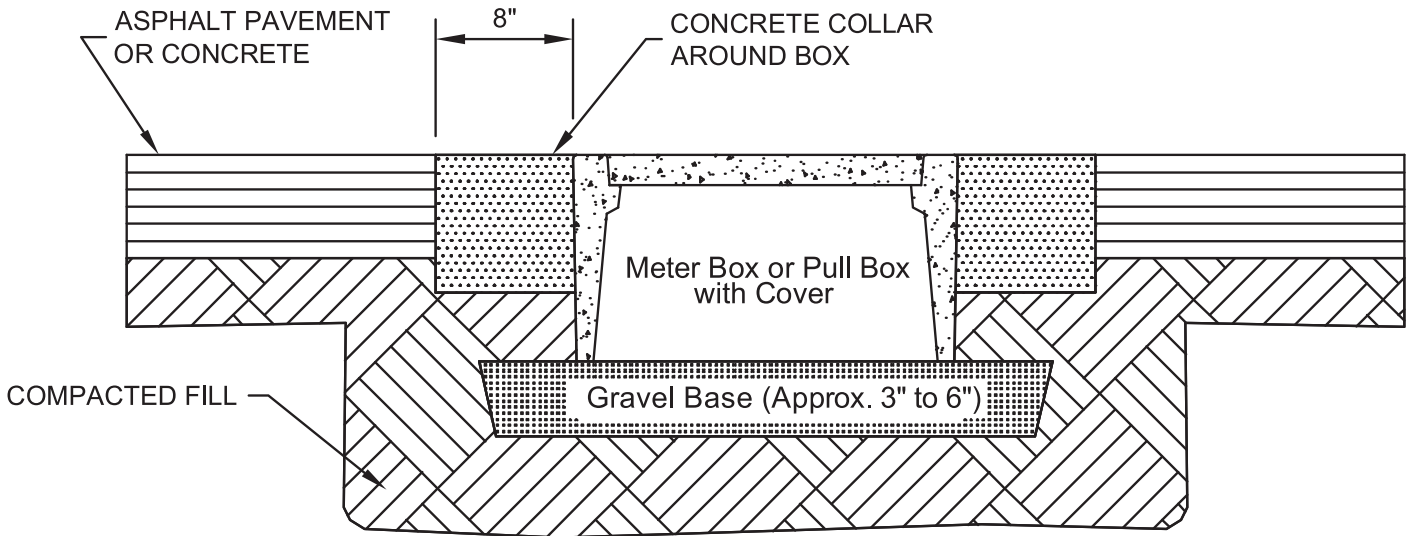
- 5** Place a temporary cover or the actual cover on the enclosure before backfilling uniformly on all four sides. Backfill to grade level. Compact every 6 inches to ensure well compacted backfill. A mechanical tamping device or alternative hand operated mechanical devices should be used. Do not use a tire or the shovel of a backhoe as tamping tools!
-

- 6** Be sure that the soil or pavement is to grade level before allowing vehicles in the vicinity of the enclosure.



PEDESTRIAN RATED ENCLOSURES

Installation in concrete or pavement for driveways, parking lots, and off-roadway applications where subject to occasional non-deliberate light vehicles.



Field preparation

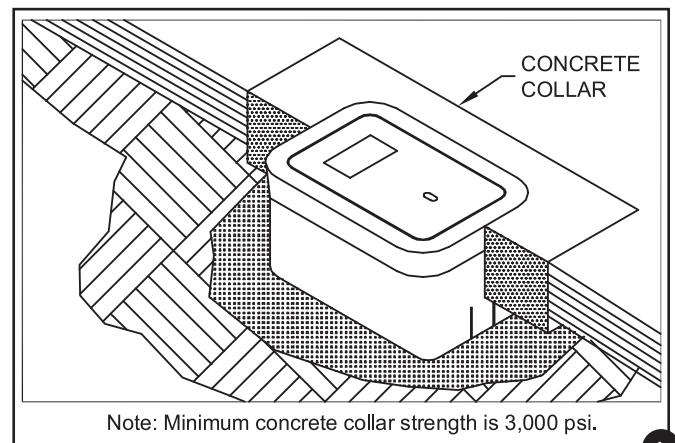
- Prepare the excavation approximately 6" deeper than the overall height of the enclosure.
- The length and width of the excavation should be determined by adding 4" to 6" to the overall length and width of the box.

Installation Recommendations

- Place 3" to 6" of compacted material such as sand or gravel because of its drainage characteristics.
- The compacted material should be leveled so the top of the box is flush to grade.

Backfilling

- Place select backfill into the excavation in 12" lifts and compact.
- The final 8" of the excavation should be finished with concrete
- This may be accomplished by providing a form around the enclosure that would produce an eight-inch wide collar (fig 1).



1

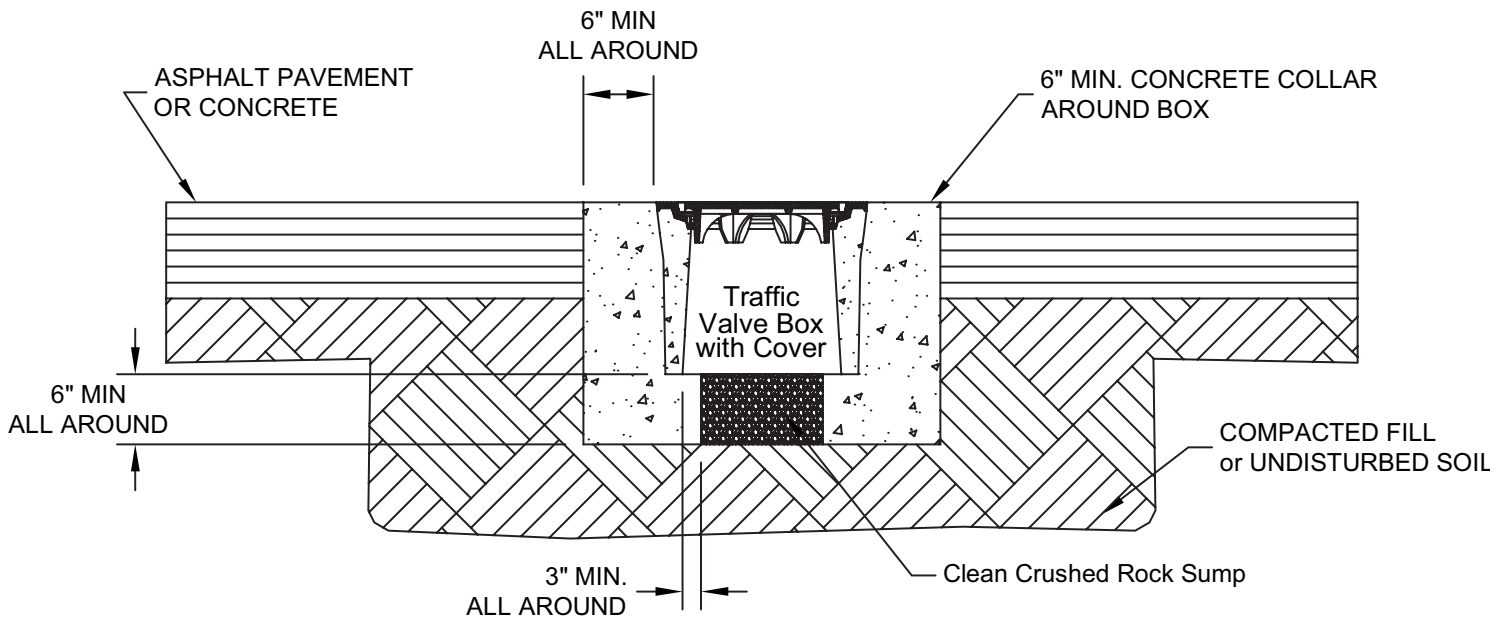
Quick Specification

Underground enclosures are manufactured by Oldcastle Enclosure Solutions. Boxes and covers shall be concrete and have a pedestrian rated minimum vertical test load of 350 pounds per square foot. The concrete shall test to a minimum of 4500 psi compressive strength.



TRAFFIC RATED VALVE BOXES

Installation in concrete or pavement for full traffic applications. This procedure is consistent with Caltrans Standard Plan ES-8B.



Field preparation

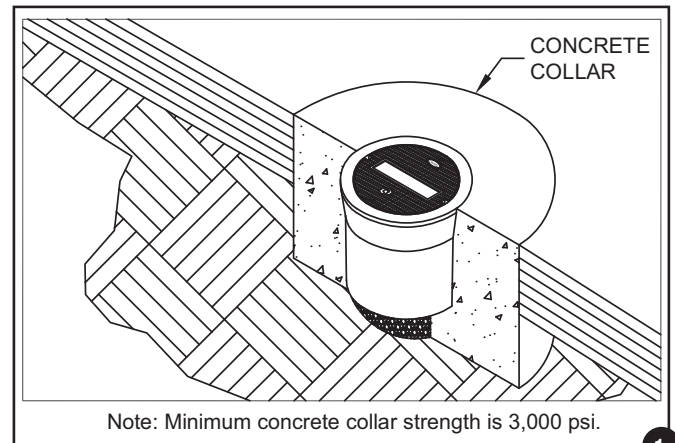
- Prepare the excavation approximately 6" deeper than the overall height of the enclosure.
- The diameter of the excavation should be determined by adding 12" to the overall diameter of the box.

Installation Recommendations

- Place at least 6" of compacted clean crushed rock, coarse gravel, or angular stone material because of its drainage characteristics.
- The compacted material should be leveled so the top of the box is flush to grade.

Backfilling

- Place select backfill into the excavation in 4" to 6" lifts and compact.
- The final 6" to 8" of the excavation should be finished with concrete collar. This may be accomplished by providing a form around the enclosure that would produce a six-inch minimum wide collar (fig 1).



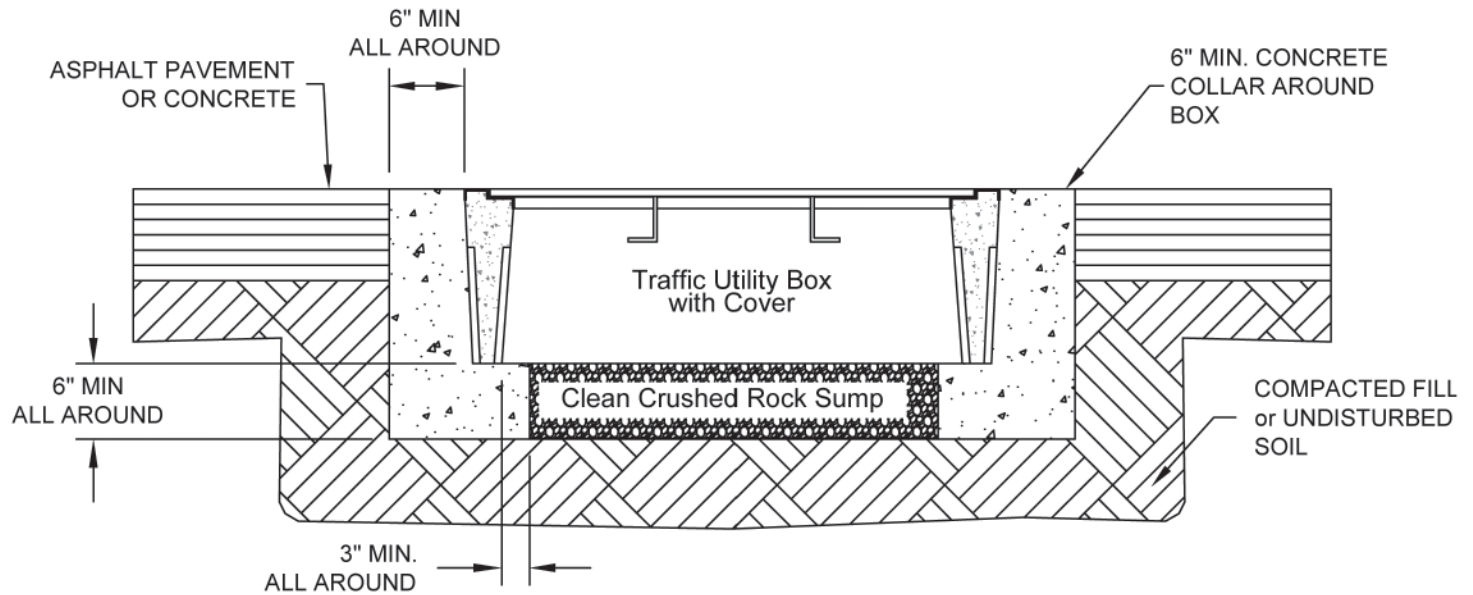
Quick Specification

Traffic-rated underground enclosures are manufactured by Oldcastle Enclosure Solutions. The box shall be precast concrete with a cast iron frame and cover with a 16,000 lbs design load. Traffic-rated enclosures shall be used where the box and cover may be exposed to vehicular traffic. The precast concrete mix shall exceed 4,500 PSI compressive strength. The concrete collar mix used in the installation shall exceed a minimum of 3,000 PSI compressive strength. Please contact Oldcastle Enclosure Solutions for a product cut sheet and possible applications.



TRAFFIC RATED ENCLOSURES

Traffic box installation procedure for installation in concrete or pavement for full traffic application. This procedure is consistent with Caltrans Standard Plan ES-8B.



Field preparation

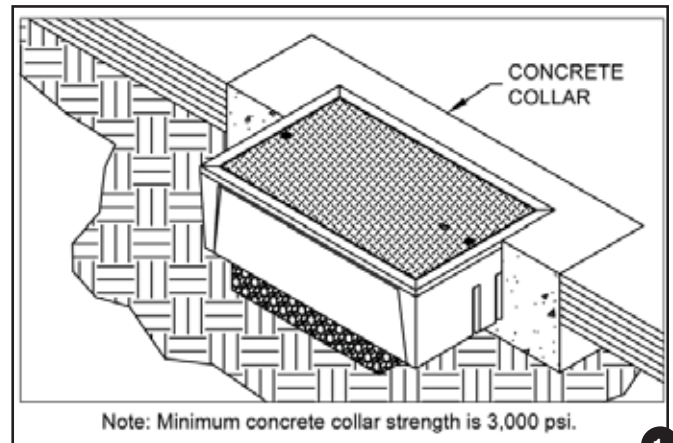
- Prepare the excavation approximately 6" deeper than the overall height of the enclosure.
- The length and width of the excavation should be determined by adding 12" to the overall length and width of the box.

Installation Recommendations

- Place at least 6" of compacted clean crushed rock, coarse gravel, or angular stone material because of drainage characteristics.
- The compacted material should be leveled so the top of the box is flush to grade.

Backfilling

- Place select backfill into the excavation in 4" to 6" lifts and compact.
- The final 6" to 8" of the excavation should be finished with concrete collar. This may be accomplished by providing a form around the enclosure that would produce a six-inch minimum wide collar (fig 1).



Quick Specification

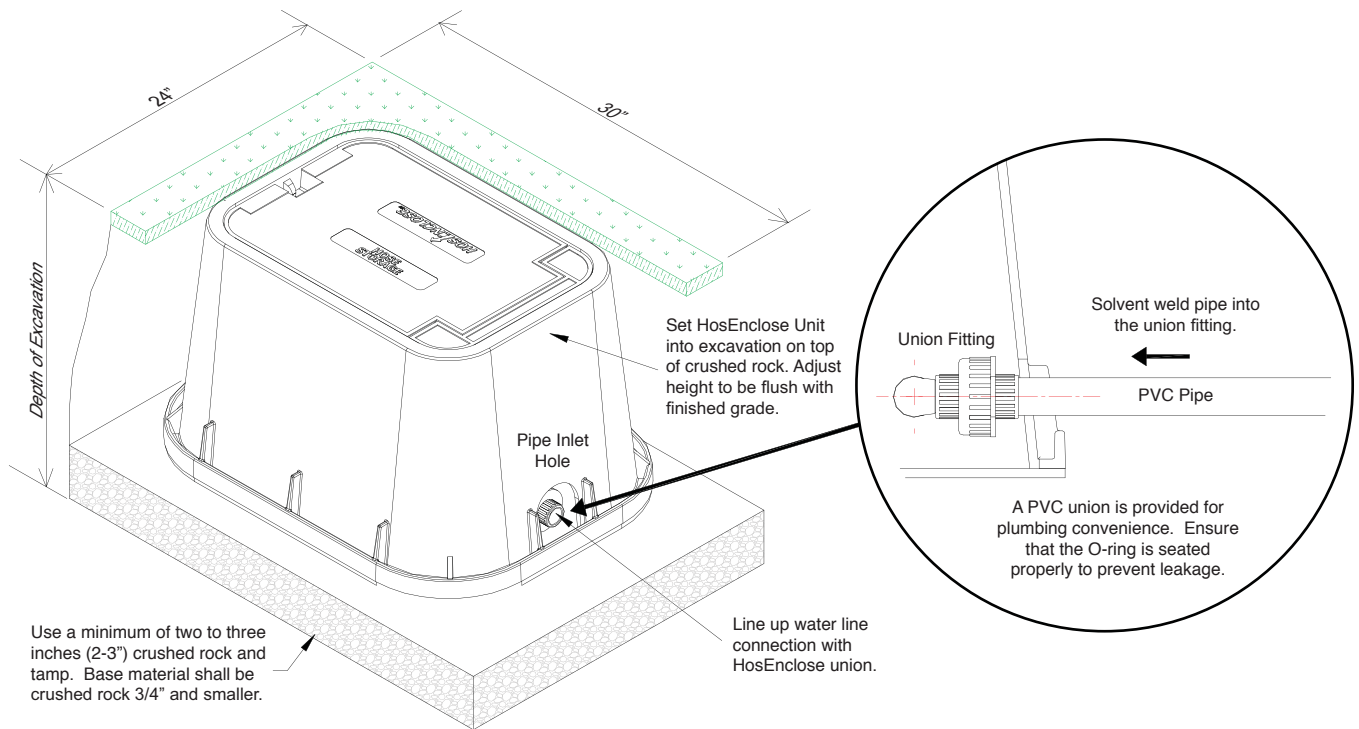
Traffic-rated underground enclosures are manufactured by Oldcastle Enclosure Solutions. The box shall be precast concrete with a steel frame and cover with a 16,000 lbs design load. Traffic-rated enclosures shall be used where the box and cover may be exposed to vehicular traffic. The precast concrete mix shall exceed 4,500 PSI compressive strength. The concrete collar mix used in the installation shall exceed a minimum of 3,000 PSI compressive strength. Please contact Oldcastle Enclosure Solutions for a product cut sheet and possible applications.



Installation Guidelines

LOCAL CODES: Local plumbing codes shall govern installation requirements. Ensure that all applicable national, local building codes and safety rules are observed throughout the installation.

EXCAVATION: Plan excavation approximately three to six inches (3"-6") longer and wider than the actual dimensions of the HosEnclose™ Unit. Provide for drainage with crushed rock. Excavate two to three inches (2"-3") deeper than the overall height of the unit. See illustration details below.



BACK FLOW PREVENTION: The Uniform Plumbing Code recommends that the potable water supply be protected from backflow with an approved backflow prevention device (2000 UPC, Section 603.4.6). Backflow protection shall be provided by one of the following devices:

1. Atmospheric vacuum breaker
2. Pressure vacuum breaker
3. Reduced pressure backflow preventer

Refer to local codes for specific backflow prevention requirements.

INSTALLATION DETAILS: Please visit the Catalogs section of our website for detailed installation instructions at www.oldcastleprecast.com/enclosuresolutions.

Cold Weather Applications: For installations in areas susceptible to freezing temperatures, adequate drainage and freeze protection must be provided.

Limited one year warranty.

Marking Plate Installation Guidelines

For Synertech and H-Series marking plate lids.

Product Description

The marking plate system allows common size Synertech and H-Series lids to be inventoried blank (without marking) and a marking plate to be applied at the time of sale or use (fig 1).

Lids must have a marking plate installed prior to field placement.

Installation

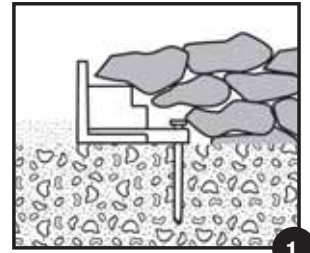
- For optimum results, both the lid and the marking plate should be clean and dry. The marking plate will have a grid pattern on the back side.
- Apply a moderate amount of Surebond SB-12 adhesive (approximately 1/8" bead) in a wave like pattern (fig 2) starting and ending approximately 3/8" from pocket sides (excessive adhesive will slow curing process).
- Place marking plate in pocket (fig 3) and apply continual pressure to the top of the plate for 10 seconds.
- Adjust marking plate to the center of the pocket and ensure it is below or flush with the lid surface before adhesive sets.
- Tack-free time is 10-20 minutes and full cure is approximately 24 hours.



Landscape Edge™ Restraint is quick and easy to install, defining each space within your lawn and garden with a clean, crisp edge.

Install on new lawn with spikes (fig 1):

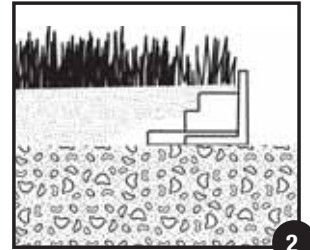
- Place Landscape Edge™ Restraints (LE) on a smooth soil base that is graded and ready for landscaping.
- Position LE arches in towards the ground fill.
- Once LE is in place, drive the supplied 8" spikes through the pre-drilled spike bosses as shown, spacing every 12" to 24".
- Seed the landscape according to the seed manufacturer's directions.



1

Install on sod without spikes (fig 2):

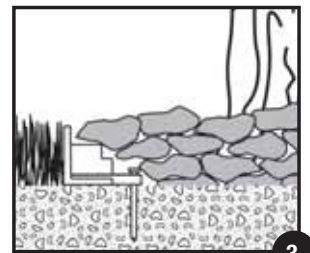
- Place LE on smooth a soil base that is graded and ready for landscaping.
- Position LE arches out towards the soil base.
- Once LE is in place, install sod pieces over the arches and flush against the edge wall.
- Follow the sod provider's instructions to ensure the sod roots properly to the ground.



2

Install tree rings (fig 3):

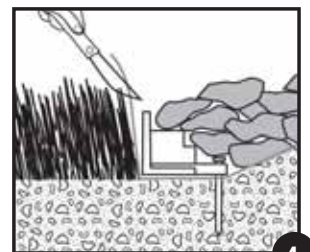
- Remove any surface covering to soil base level around the tree as needed – be careful not to damage the tree.
- Installing right to left, flex LE to form the desired border around tree with arches facing in toward the tree.
- Once LE is in place, drive the supplied 8" spikes through the pre-drilled spike bosses, making sure to leave the first boss open on each section to close the ring. The tighter the ring, the more spikes are needed to achieve a uniform curve.
- Fill the tree ring with the desired fill according to the manufacturer's directions.



3

Install with weed barriers (fig 4):

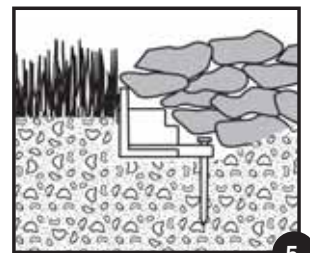
- Remove turf to soil base level in the desired fill area. (Turf roots will die off when covered with weed barrier.)
- Place weed barrier over the cleared area, allowing excess barrier to extend over the turf area.
- Place LE with arches on top of the barrier to create the desired border.
- Once LE is in place, drive the supplied 8" spikes through the pre-drilled spike bosses as shown, spacing every 12" to 24". For thick barriers, create a puncture inside the bosses before installing spikes to ensure a firm hold.
- Trim the excess weed barrier.



4

Install in high traffic areas (fig 5):

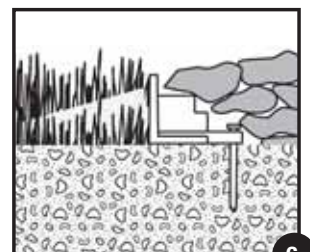
- Prepare the landscaping area by removing ground covering to soil base level.
- Remove an additional inch of soil base below the LE installation area.
- Position LE in the desired shape with arches in towards the ground fill.
- Once LE is in place, drive the supplied 8" spikes through the pre-drilled spike bosses as shown, spacing every 12" to 24".
- Seed the landscape according to the seed manufacturer's directions.



5

Install with concealing slope (fig 6):

- Prepare the landscaping area by removing ground covering to soil base level.
- Position LE in the desired shape with arches in towards the ground fill.
- Once LE is in place, drive the supplied 8" spikes through the pre-drilled spike bosses as shown, spacing every 12" to 24".
- Add a 12" to 18" wide bed of dirt that gradually slopes towards the LE wall so only 1" of wall is visible.
- Seed the landscape and slope according to the seed manufacturer's directions.



6

Paver Frame™ Edge Restraint is quick and easy to install, making any paver installation look like a professional installation.

Site Preparation:

- Layout your hardscape project following the paver manufacturer's recommendations. Place pavers in the desired configuration.
- Prior to installing the first piece of Paver Frame™ Edge Restraint (PF), use your trowel to carefully cut vertically down through the bedding sand, pulling only the sand away from the paver or soldier course.
- Use care not to disturb the compacted base. PF should only be installed on top of the compacted base, not on top of the bedding sand.

Basic Installation:

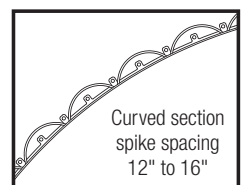
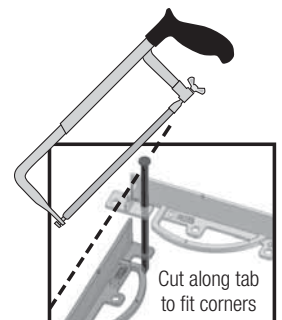
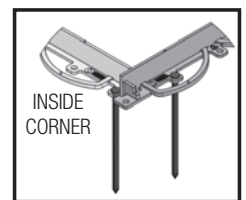
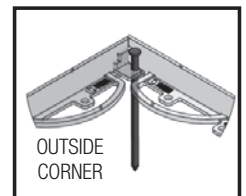
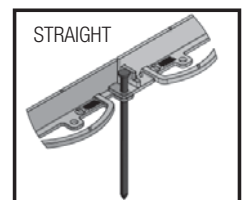
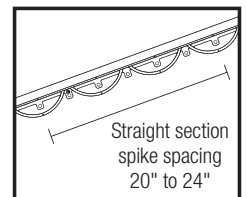
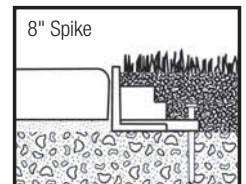
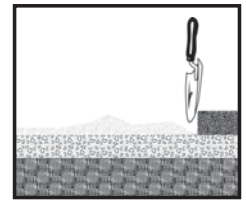
- Identify a corner toward the right end of a straight section of installed pavers.
- Position and hold the first PF section with the edge wall pressed firmly against the pavers.
- In the corner and at the right hand end of that first section, drive a spike in the last spike boss.
- Install the second spike in the next boss, driven in at a slight angle pointing toward the paver course. Some professional installers find this technique useful to keep pressure on the edging against the pavers.
- Continue working from right to left, installing spikes every 20" – 24" length along the PF section.
- Add sections as needed, using a single spike to connect each section. The connector on the left end of each section can be joined with the connector on the right end of any other section.
- Cut PF sections with a standard hand saw to fit. Cuts may be made anywhere along its length.

Forming Corners:

- When forming an inside corner, use two spikes as shown.
- When forming an outside corner, join the connectors with one spike as shown and trim the excess edge.

Creating Gradual Curves:

- Install spikes frequently to create a uniform, gradual curve. PF sections flex easily without cutting to form smooth curves.
- Depending on the curve radius, spike spacing should be decreased to 12" or 16".
- Some professional installers find it useful to plan gentle curves during site preparation with a long piece of ¾" diameter PVC pipe. When a long curving path is planned, this method provides a useful guide for locating the 6' long Paver Frame sections.



Terms and Conditions

Irrigation Products

- Prices subject to change without notice
- F.O.B. Oldcastle Enclosure Solutions
- Freight Pre-Paid on orders larger than \$2,000
- Credit Terms: Net 30 days to approved customers
- MINIMUM ORDER SIZE \$100.00 NET
- Special requirements for color, materials, or hardware will be quoted upon request
- Other sizes or type of bolt heads will be quoted upon request
- Products being requested for return must have prior authorization and are subject to 25% restocking fee for standard products returned within 180 days of purchase. Products must be in saleable condition
- Special order products cannot be returned

Oldcastle Enclosure Solutions

Toll Free: 800-735-5566 Fax: 800-827-7111

www.oldcastleprecast.com/enclosuresolutions



For more information on Enclosures or a distributor near you call (800) 735-5566



Oldcastle Enclosure Solutions manufactures the world's leading brands of grade-level utility access boxes for the Electrical, Communications, Water, and Irrigation markets. Our products deliver lasting performance in the field, protecting and concealing critical infrastructure to keep your community running strong.

oldcastleprecast.com/enclosuresolutions

