

## FEATURES & SPECIFICATIONS

**INTENDED USE** — LBL LED wraparound provides a digital lighting platform to deliver general ambient lighting for surface-mount applications. The LED system delivers long life and excellent color to ensure a quality, low-maintenance lighting installation. Ideal for closets, storage rooms, hallways, stairwells and offices.

**CONSTRUCTION** — Metal parts are die formed from code-gauge steel. Prismatic diffuser is 100% acrylic with sonically welded luminous ends. Continuous side flanges on fixture body provide light trap and continuous diffuser support to prevent accidental opening and simplify maintenance.

Finish: Five-stage iron phosphate pretreatment assures superior paint adhesion and rust resistance.

Painted parts finished with high-gloss, high-reflectivity baked white polyester enamel (low VOC).

**OPTICS** — Curved prismatic diffuser with linear side prisms and highly transmissive light diffusing film minimizes lamp image and provides high-angle brightness control. Luminous end plates soften appearance for improved aesthetics.

**ELECTRICAL** — Long-life LEDs, coupled with high-efficiency drivers, provide superior quantity and quality of illumination for extended service life. 90% LED lumen maintenance at 50,000 hours (L90/50,000). The LEDs have a CRI of 82.

eldoLED driver options deliver choice of dimming range and choices for control, while assuring flicker-free, low-current inrush, 89% efficiency and low EMI.

Step-level dimming option allows system to be switched to 50% power for compliance with common energy codes while maintaining fixture appearance.

**CONTROLS** — Pair the LBL with the fixture mount Sensor Switch LSXR sensor for additional energy savings when the space is unoccupied. The LSXRHL sensor dims the fixture down to a low-level setting when there is no occupancy. This option is ideal for stairwells, back rooms, and closets due to the low occupancy level in those spaces.

Optional nLight® embedded controls continuously monitor system performance, allow for constant lumen management / compensation function, facilitate simple “plug-and-play” network and controls upgrading via Cat-5 cable. Ballast disconnect provided where required to comply with US and Canadian codes.

**LISTINGS** — CSA certified to meet U.S. and Canadian standards. Damp listed.

DesignLights Consortium® (DLC) qualified product. Not all versions of this product may be DLC qualified.

Please check the DLC Qualified Products List at [www.designlights.org/QPL](http://www.designlights.org/QPL) to confirm which versions are qualified.

**WARRANTY** — 5-year limited warranty. Complete warranty terms located at [www.acuitybrands.com/CustomerResources/Terms\\_and\\_conditions](http://www.acuitybrands.com/CustomerResources/Terms_and_conditions)

**Note:** Actual performance may differ as a result of end-user environment and application.

All values are design or typical values, measured under laboratory conditions at 25 °C.

Specifications subject to change without notice.

Catalog Number
Notes
Type

### Low-Profile Curved-Basket LED Wraparound

# LBL2



2' LENGTH, NARROW HOUSING  
LED



eldoLED®



Stock version through Contractor Select Offering
LBL2 LP835
LBL2 LP840

### A+ Capable Luminaire

This item is an A+ capable luminaire, which has been designed and tested to provide consistent color appearance and out-of-the-box control compatibility with simple commissioning.

- All configurations of this luminaire meet the Acuity Brands' specification for chromatic consistency
- This luminaire is part of an A+ Certified solution for nLight® control networks when ordered with drivers marked by a **shaded background**\*
- This luminaire is part of an A+ Certified solution for nLight control networks, providing advanced control functionality at the luminaire level, when selection includes driver and control options marked by a **shaded background**\*

To learn more about A+, visit [www.acuitybrands.com/aplus](http://www.acuitybrands.com/aplus).

\*See ordering tree for details

# LBL2 LED Wraparound



A+ Capable options indicated by this color background.

## ORDERING INFORMATION

Lead times will vary depending on options selected. Consult with your sales representative.

**Example:** LBL2 2000LM 80CRI 35K MIN1 NLIGHT MVOLT LSXRHL PIR

LBL2		Lumens <sup>1</sup>		CRI		Color temperature		Minimum Dimming Level		Control		Voltage	
LBL2	2' LED wrap	2000LM	2000 lumens	80CRI	80 CRI	30K	3000 K	MIN1	Dims to 1% <sup>2</sup>	ZT	0-10V Dimming	MVOLT	120-277V
						35K	3500 K	NODIM	On/off, non-dimming <sup>3</sup>	NLIGHT	nLight enabled	347	347V <sup>4</sup>
						40K	4000 K	SLD	Step-level dimming <sup>3</sup>				
						50K	5000 K						

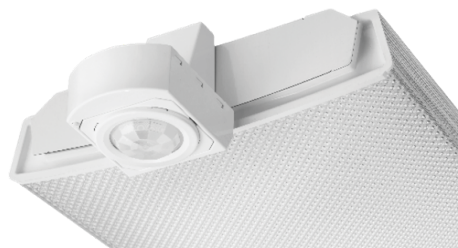
Emergency Options		Lumen Management		Occupancy Control		Occupancy Sensor Technology		Options	
EMG	For use with nLight on generator supply EM power <sup>5</sup>	(blank)	None	LSXRHL	Sensor Switch <sup>®</sup> fixture mount sensor with High/Low occupancy operation <sup>6,7</sup>	PIR	Passive Infrared	USPOM	US Point of Manufacture
		CL80	Constant lumen output, 80%	LSXR10	Sensor Switch <sup>®</sup> fixture mount sensor with on/off occupancy operation <sup>6</sup>				

### Notes

- 1 Approximate lumen output.
- 2 Requires ZT or NLIGHT
- 3 Not available with Control or Sensor Options.
- 4 Not available with SLD option.
- 5 nLight EMG option requires a connection to existing nLight network. Power is provided from a separate N80 or N100 enabled fixture. Requires NLIGHT.
- 6 Requires MIN1 and PIR options.
- 7 Dims to approximately 10% light output when unoccupied.

### Performance Data

Lumen Package	Lumens	Input Watts	LPW
2000LM 80CRI 30K	1970	16.9	117
2000LM 80CRI 35K	2014	16.9	119
2000LM 80CRI 40K	2046	16.9	121
2000LM 80CRI 50K	2121	16.9	126



### Sensor Switch LSXRHL Sensor

**Lens type:** 10 - Low Mount 360° coverage  
**Dimming:** HL - High/Low Occupancy operation  
**Min Dim Level:** 3V - approximately 10% light output when unoccupied  
**Time Delay:** 5M - 5 minutes

## PHOTOMETRICS

### MOUNTING DATA

Suspension Kit Ceiling Types: F1 for use with most T-bar and screw slot grid ceiling applications. Designed for on-grid and off-grid installations.

F2 for use with recessed or surface-mount horizontal J-box applications.

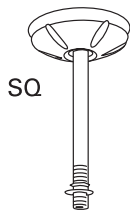
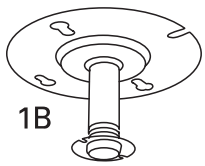
For unit or row installation; surface or suspend mounting.

Individual installation — One double-stem or two single-stem hangers required.

For aircraft cable, one STACG\_, STACGF\_, or STACGE\_ required for each suspension point.

Note: 2' configurations with emergency option cannot be stem mounted.

See ACCESSORIES below for hanging devices.



### DIMENSIONS

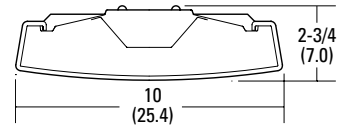
All dimensions are inches (centimeters) unless otherwise noted.

#### Specifications

Length: 24 (61.0)

Width: 10 (25.4)

Depth: 2-3/4 (7.0)



All dimensions are inches (centimeters) unless otherwise indicated.